



HT40KX-25

FEATURES

- * 6,000 lb. Maximum Lifting Capacity
- * 40,000 ft.-lb. Moment Rating
- * Fully Hydraulic Power
- * Hexagonal Boom Construction
- * 400° Power Rotation
- * Meets ANSI B30.5 Safety Standards
- * Meets OSHA 1910.180 Requirements

HT40KX-P, Standard Feature Group:

- * Proportional Control Valve
- * Pendant with Variable Speed Trigger Switch
- * Fully hydraulic boom extension 12-25 ft.
- * High Speed Winch: 60 ft./min.
- * Hydraulic Requirements: 12 GPM, 25 gal. Reservoir

HT40KX, Basic Feature Group Available At Significant Savings:

- * Non-proportional Control Valve
- * Pendant with Pre-Set Speed Toggle Switches
- * Single-Stage Hydraulic Extension 10-16 ft.
- * Manual Boom Extension 16-20 ft.
- * Winch Speed: 18 ft./min.
- * Hydraulic Requirements: 2.6 GPM, 10 gal. Reservoir

MINIMUM REQUIREMENTS

- * 14,500 lb. GVWR Chassis
- * Outriggers: Front and Rear
- * PTO, Pump and Reservoir

LIFTING CAPACITIES	
REACH (FT.)	CAPACITY (LBS.)
6	6,000
12	3,175
18.5	1,825
25	1,175

STANDARD EQUIPMENT

- * Capacity Overload Shut-Off System
- * Anti-Two-Blocking System
- * 100 ft. of 3/8" Aircraft-Quality Wire Rope
- * Remote Control Pendant: 25 ft. Cord and Quick Disconnect
- * Snatch Block with Swivel Hook Safety Latch

OPTIONAL EQUIPMENT

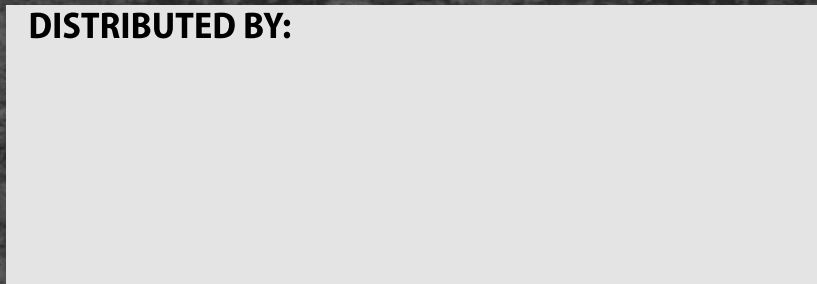
- * Radio Remote Controls
- * Hydraulic and Manual Outrigger Packages
- * Hydraulic Pumps and Reservoirs
- * Mounting Pedestal for Platform Bodies
- * Boom Rests
- * Cable Overhaul Weight

Specifications subject to change without notice.

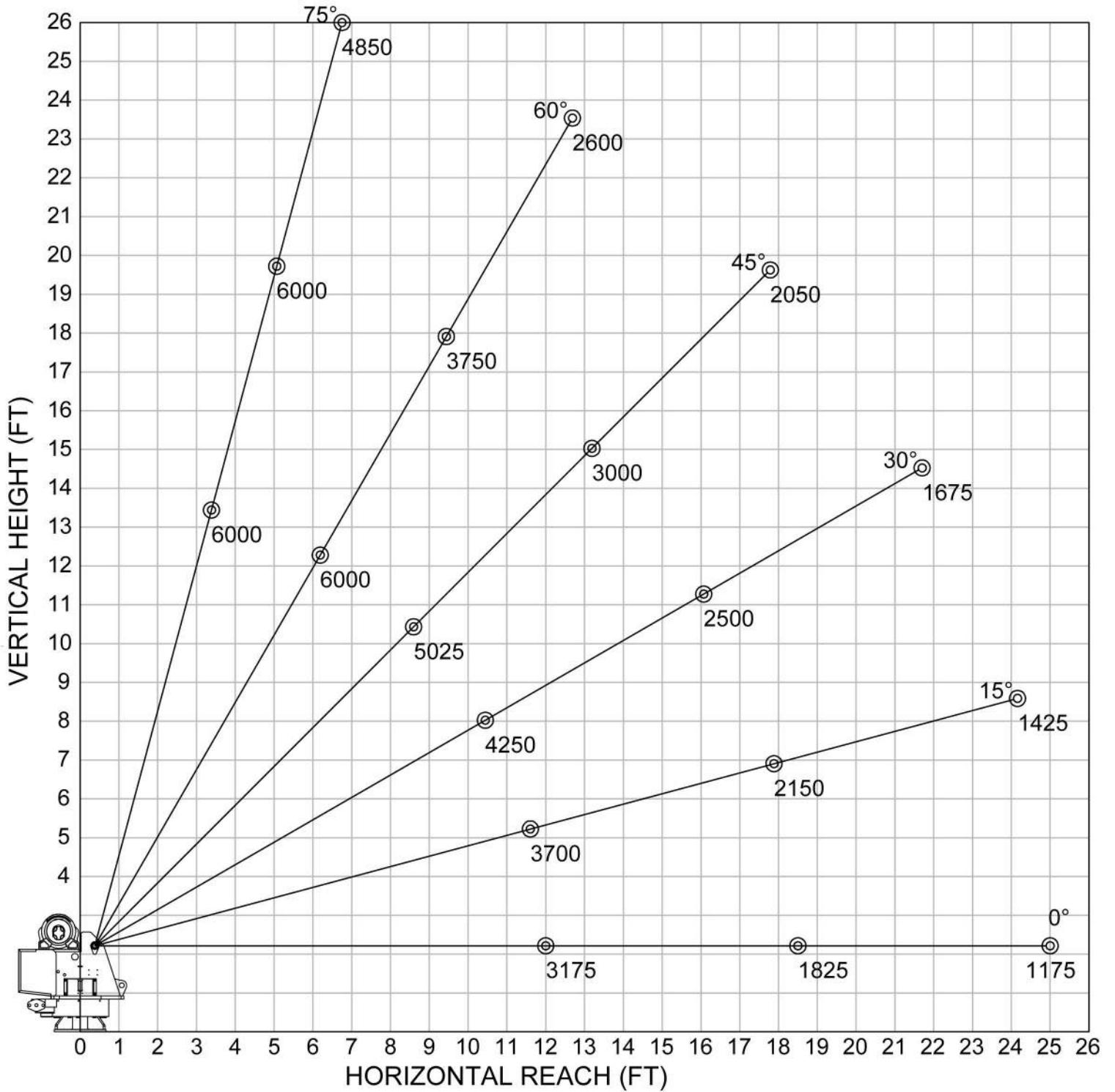


12110 Best Place Cincinnati, OH 45241
 800-226-2238 internetsales@venturo.com
 www.venturo.com

DISTRIBUTED BY:



HT40KX 12-18.5-25 FT. BOOM MAXIMUM CAPACITY CHART



Weight of load handling devices are part of the load and must be deducted from the gross capacity.

LOAD BLOCK USAGE:

- 1 part line for loads less than 3000 lbs.
- 2 part line for loads of 3000 lbs. and greater.

Weight of Load Block = 51 lbs.