

## NK-550VR



Address inquiries to :

<http://www.kato-works.co.jp>

NOTE : Illustrations may include optional equipment. KATO products and specifications are subject to improvements and changes without notice.  
Before you use this crane, study the instruction manual thoroughly and follow the instructions it contains.  
Some differences may arise between the machine delivered and the photographs in the catalogue.  
The actual colours of the body and interior may appear slightly different from those shown in this catalogue due to the limitations of photography and printing.



**QUALITY & EXPERIENCE  
SINCE 1895**

### KATO WORKS CO.,LTD.

9-37, Higashi-ohi 1-chome, Shinagawa-ku, Tokyo 140-0011 Japan.  
Tel. : Head Office Tokyo(03)3458-1111  
Overseas Marketing Department Tokyo(03)3458-1115  
Fax. : Tokyo(03)3458-1163

# NK-550VR

## FULLY HYDRAULIC TRUCK CRANE

Maximum rated lifting capacity: 55t×3.0m  
Maximum boom length: 43.0m  
Engine output: 258kW/2,100min<sup>-1</sup> (ISO Net)

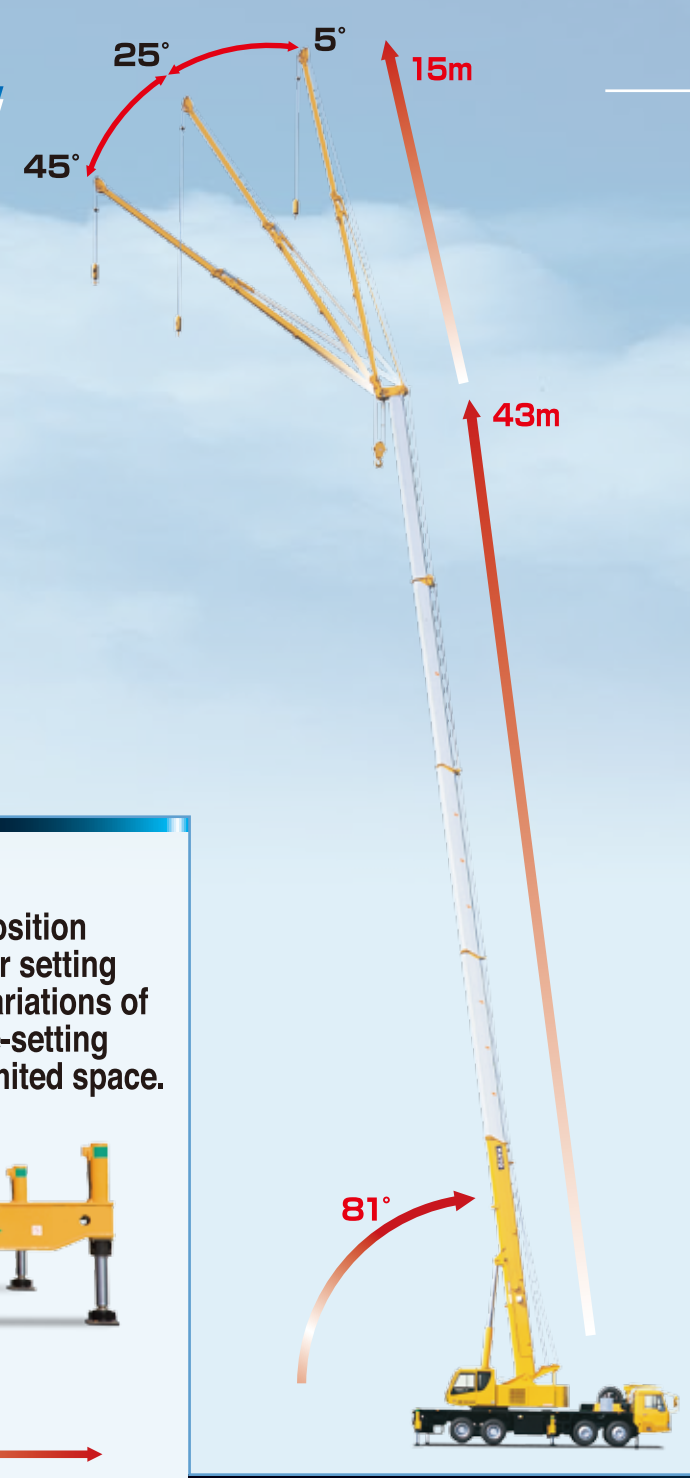




# POWERFUL AND ECO-FRIENDLY

**More Closer!  
More Higher!  
More Farther!**

Solid 43m **SUPERBOOM** combined with 15m **fly jib** offers you steady operation and wider working ranges in narrow spaces.



## Advanced "SUPERBOOM"

- Max. boom length — 43 m
- Fly jib length — 9.2 m & 15 m
- Max. lifting height — 43 m (boom)  
58 m (boom + fly jib)

## Wide working ranges in narrow spaces

- Max. derricking angle — 81°
- Fly jib with 3 offset angles — 5°, 25°, 45°
- Small tail slewing radius — 3.48 m

## Wide & roomy operator's cabin

- Operating lever system — ISO Type
- Safe load indicator — ACS COMPULOAD with working range limiting function

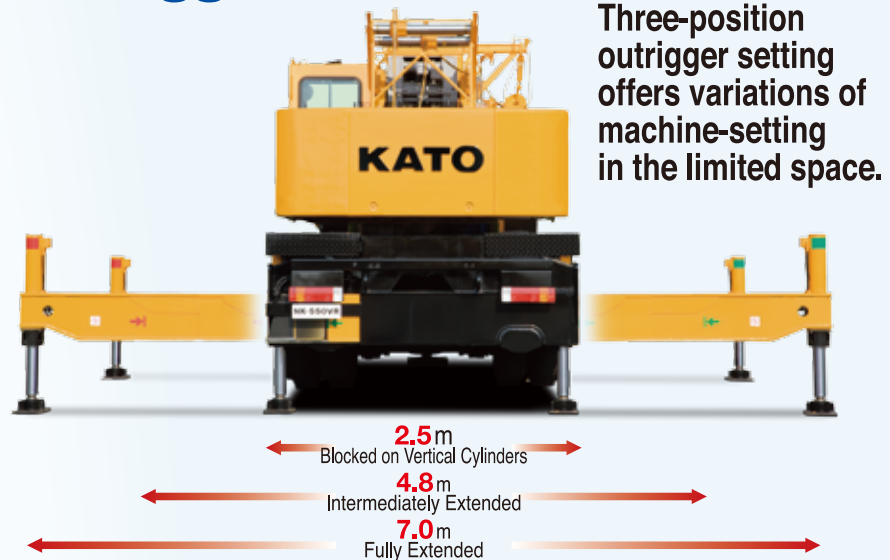
## Compact body with better mobility

- Overall length — 13.37 m
- Overall height — 3.78 m
- Min. turning radius — 11.75 m

## New engine FAW CA6DL2-35E3

- Conformity regulation — Euro III Engine
- Max. output — 258 kW
- Max. torque — 1,500 Nm

## Outrigger width



## Wide & roomy operator's cab for the safe operation

**New** ACS Moment Limiter Compuload (MS-200) with outrigger width detector and working range limiting function.



- Easy touch panel operation
- High quality color display
- Working range limiting function

