

VALLA mobile crane mod. 25 E complies with the following standards:
 -2006/42/CE
 -UNIEN13000
 -I.S.P.E.S.L.




 SINCE 1945 LEADER IN PICK & CARRY
 Valla a division of CVS Ferrari Srl
 Via Piacenza, 45 - 29010 Calendasco (Piacenza) - ITALIA
 Tel. +39 0523 762025 / 752004 - Fax +39 0523 760531
 e-mail: info@valla.com - www.valla.com

Data subject to be changed without any previous notice. Pictures may differ from technical description.

MAX. CAPACITY Lbs. 4,400



AVAILABLE VERSIONS

ELECTRIC BATTERY OPERATED

CRANE FRAME: fabricated from preformed and welded steel plate. Standard carry deck.
TRACTION: electric motor AC 12 kW – 48 V.
TRANSMISSION: automatic, hydrostatic. Max speed 2 km/h.
TRACKED UNDERCARRIAGE: rubber tracks.
HYDRAULIC SYSTEM: gear pump, electric proportional distributor with remote control, filter, safety valves on all boom operations. Max Hydarulic pressure 200 Bar.
BOOM: 1 fixed, 1 hydraulically telescoping section and 1 manually telescoping. Adjustable nylon wear pads on the sides.
LMI: Electronic Load Moment Indicator. Display showing lifted load, max allowed load, tilting percentage, operating radius, angle, telescope and light indicators on the operative mode.

TOTAL WEIGHT: approx. Lbs. 4,600

MAX. CAPACITY: Lbs. 4,400

Options on request: radio remote control, hydraulic winch, hydraulic chain hoist, manual jib extension, non-marking tracks, man bucket and relevant certification.

SELF DIESEL PROPELLED

CRANE FRAME: fabricated from preformed and welded steel plate. Standard carry deck.
ENGINE: Diesel 11,7 KW - 3 Cylinders, water cooled.
TRANSMISSION: automatic, hydrostatic. Max speed 2 km/h.
TRACKED UNDERCARRIAGE: rubber tracks.
HYDRAULIC SYSTEM: gear pump, electric proportional distributor with remote control, filter, safety valves on all boom operations. Max Hydarulic pressure 200 Bar.
BOOM: 1 fixed, 1 hydraulically telescoping section and 1 manually telescoping. Adjustable nylon wear pads on the sides.
LMI: Electronic Load Moment Indicator. Display showing lifted load, max allowed load, tilting percentage, operating radius, angle, telescope and light indicators on the operative mode.

TOTAL WEIGHT: approx. Lbs. 4,200

MAX. CAPACITY: Lbs. 4,400

Options on request: man bucket, radio remote control, hydraulic winch, hydraulic chain hoist, manual jib extension, non-marking tracks, man bucket and relevant certification.

Data subject to be changed without any previous notice. Pictures may differ from technical description.

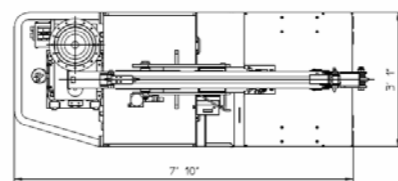
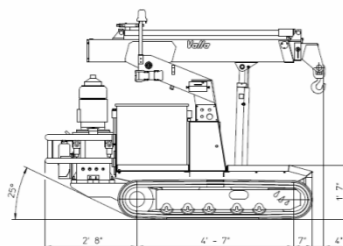
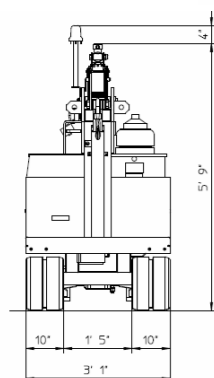
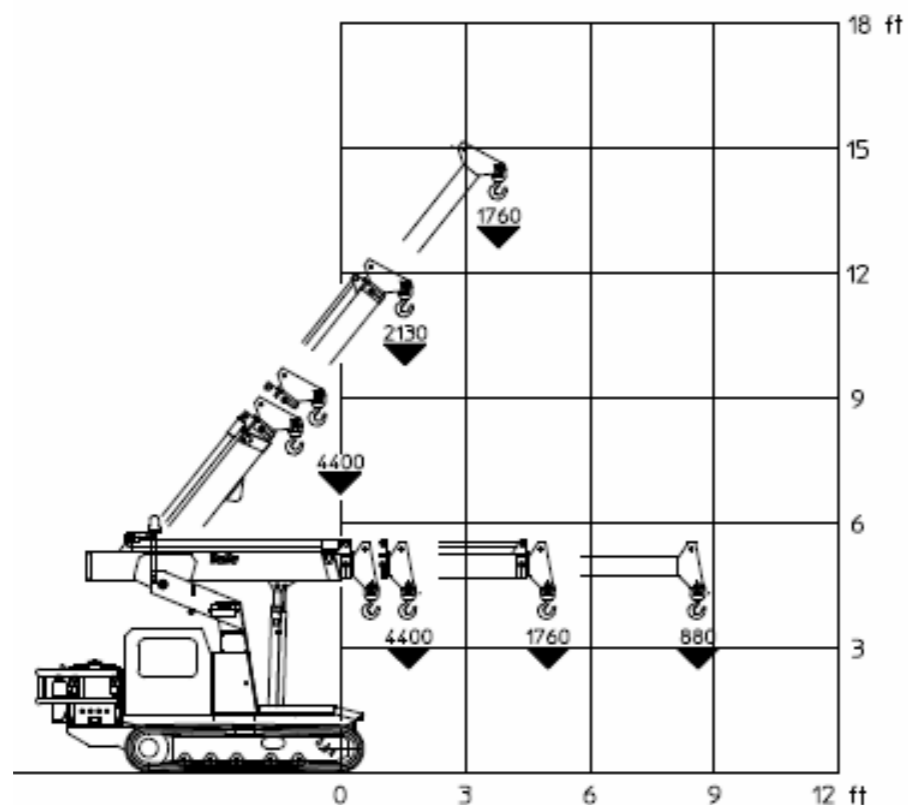


VALLA mobile crane mod. 20 TRX
 complies with the following standards:
 -2006/42/CE
 -UNIEN13000
 -I.S.P.E.S.L.

VALLA 20TRX

DIAGRAMMA DELLE PORTATE (lb)
 TABLEAU DES CHARGES UTILES (lb)
 CAPACITY DIAGRAM (lb)
 TRAGLASTDIAGRAMM(lb)
 LASTENDIAGRAM (lb)

DIAGR. N° 20TRX-011 A



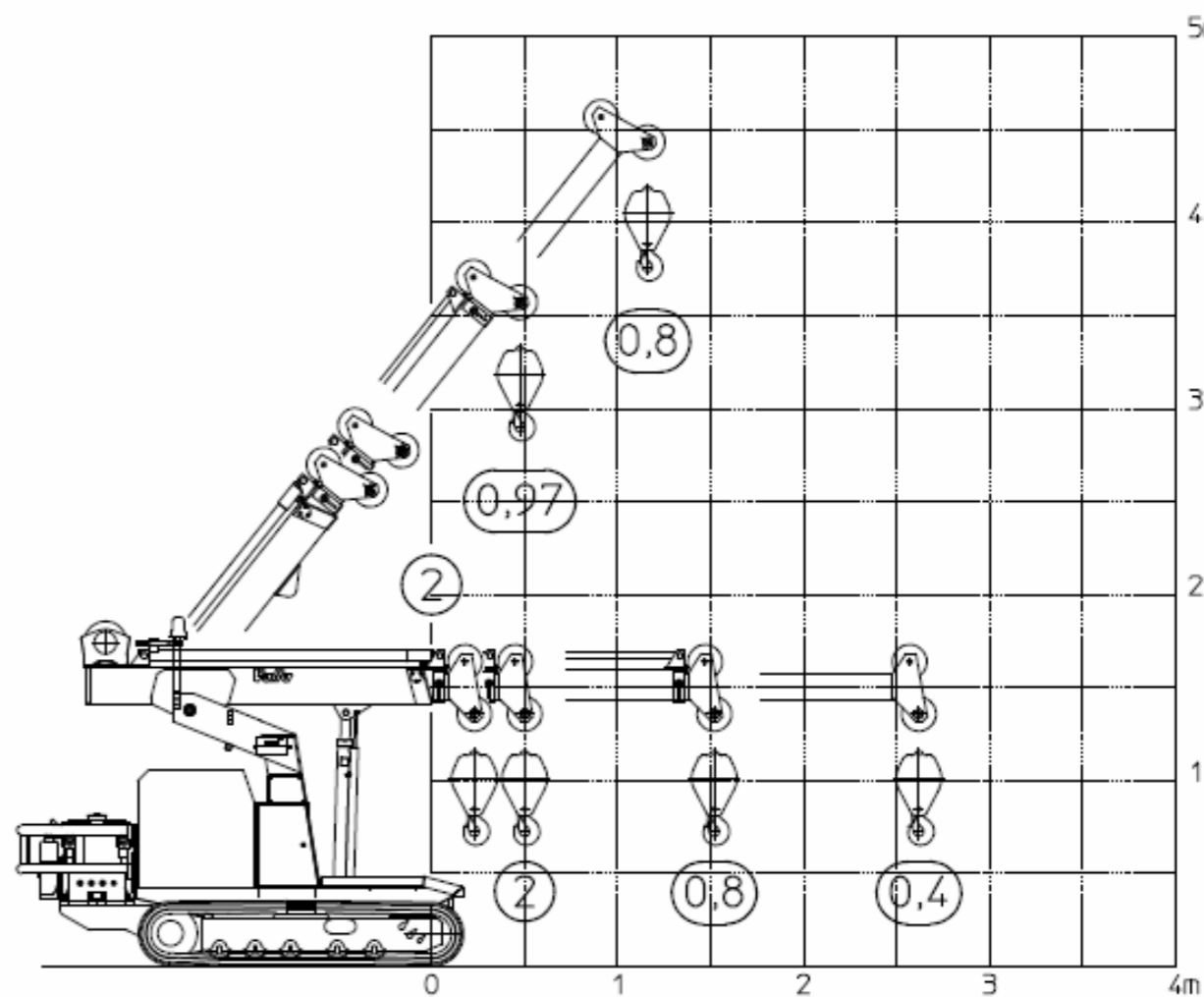
Valla a division of CVS Ferrari Srl
 Via Piacenza, 45 - 29010 Calendasco (Piacenza) - ITALIA
 Tel. +39 0523 762025 / 752004 - Fax +39 0523 760531
 e-mail: info@valla.com - www.valla.com

Lbs./ft

Data subject to be changed without any previous notice. Pictures may differ from technical description.



VALLA mobile crane mod. 25 E complies
 with the following standards:
 -2006/42/CE
 -UNIEN13000
 -I.S.P.E.S.L.



Valla a division of CVS Ferrari Srl
 Via Piacenza, 45 - 29010 Calendasco (Piacenza) - ITALIA
 Tel. +39 0523 762025 / 752004 - Fax +39 0523 760531
 e-mail: info@valla.com - www.valla.com

Data subject to be changed without any previous notice. Pictures may differ from technical description.