



WHL23TC60/75/100

Our mid-range crane, the WHL 23TC is popular in a wide range of industries that appreciate its durable and rugged design. This model shares the popular hydraulic control console and components with our classic HL 30TC cranes.

Features:

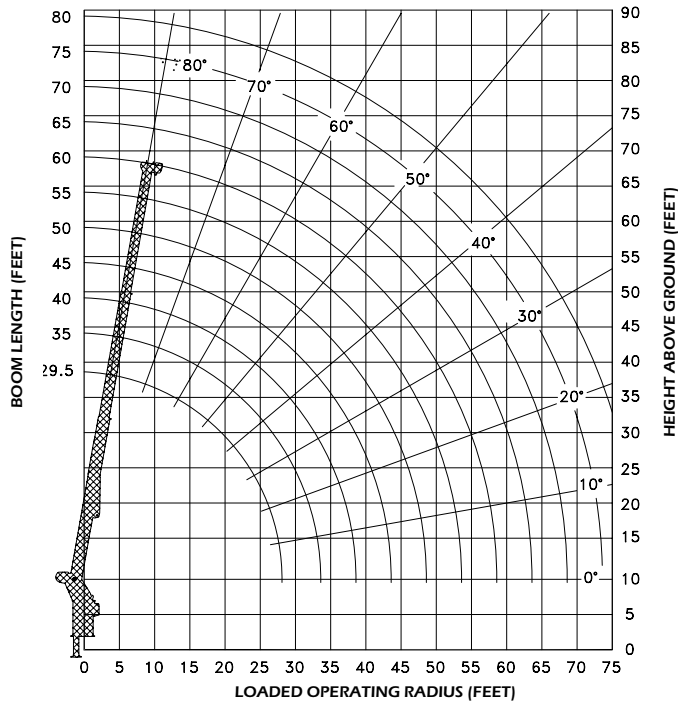
- ▶ 46,000 lb lifting capacity
- ▶ 60', 75', 100' sheave heights
- ▶ 12,000 lb planetary winch
- ▶ Optional continuous rotation
- ▶ External drive swing box with eccentric ring backlash adjustment
- ▶ Load moment indicator (LMI) and shutdown system available to prevent overloading of the crane
- ▶ Available digital wireless weight indicator to inform the operator what the load is

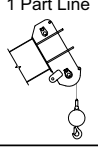
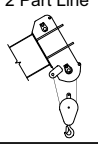
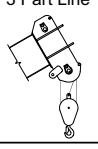
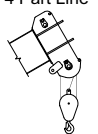
WHL23TC60 - LOAD OPERATING RADIUS (FEET)

MAXIMUM RATED LOAD IN LBS. WITH OUTRIGGERS FULLY EXTENDED										
LOADED OPERATING RADIUS	LOADED BOOM ANGLE	RETRACTED BOOM LENGTH	LOADED BOOM ANGLE	BOOM LENGTH	LOADED BOOM ANGLE	BOOM LENGTH	LOADED BOOM ANGLE	BOOM LENGTH	LOADED BOOM ANGLE	BOOM LENGTH
FEET	[°]	24' 6"	[°]	35 ft	[°]	45 ft	[°]	55 ft	[°]	59' 6"
5	79	46,000								
8	71	35,000								
10	66	30,000	74	24,000	77	22,000				
12	61	25,000	70	21,000	75	19,000	77	18,000		
15	52	20,000	65	18,000	71	16,000	74	15,000	75	14,000
20	33	15,000	55	13,500	64	12,500	69	12,000	70	11,000
25			44	11,000	56	10,000	63	9,500	65	9,000
30			29	9,000	48	8,000	57	7,500	59	7,500
35					38	6,500	50	6,500	53	6,500
40					25	5,500	43	5,500	47	5,500
45							34	4,500	40	4,500
50							23	4,000	31	4,000
55									20	3,500

RATINGS ABOVE THE HEAVY LINE ARE BASE ON STRUCTURAL COMPETENCE. RATINGS BELOW THE HEAVY LINE ARE BASE ON MACHINE STABILITY AND DO NOT EXCEED 85% OF TIPPING.

NOTE: Deductions must be made from rated loads for lifting accessories: Fixed jibs, telescopic jibs, overhaul balls, load hooks, snatch blocks and load blocks.



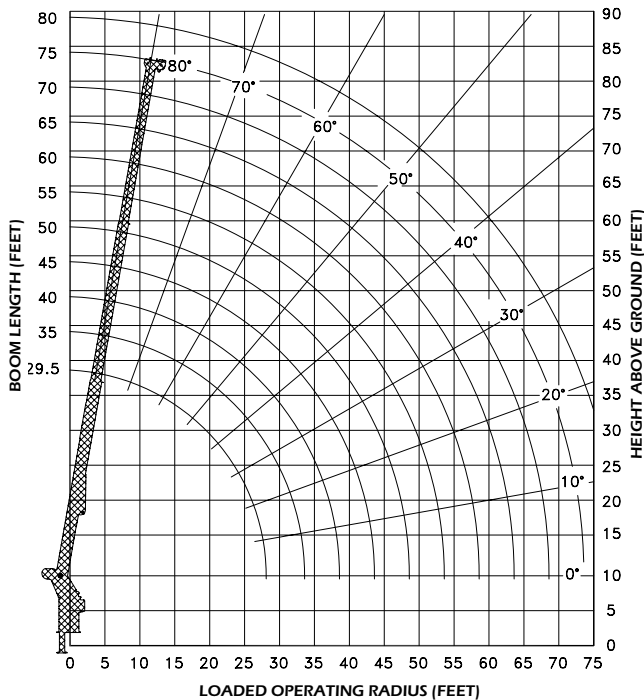
Maximum Load (lbs) 9/16 Cable	
1 Part Line 	6,000
2 Part Line 	12,000
3 Part Line 	18,000
4 Part Line 	24,000

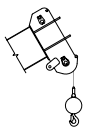
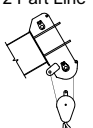
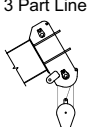
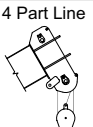
WHL23TC75 - LOAD OPERATING RADIUS (FEET)

MAXIMUM RATED LOAD IN LBS. WITH OUTRIGGERS FULLY EXTENDED												
LOADED OPERATING RADIUS	LOADED BOOM ANGLE	RETRACTED BOOM LENGTH	LOADED BOOM ANGLE	BOOM LENGTH	LOADED BOOM ANGLE	BOOM LENGTH	LOADED BOOM ANGLE	BOOM LENGTH	LOADED BOOM ANGLE	BOOM LENGTH	LOADED BOOM ANGLE	EXTENDED BOOM LENGTH
FEET	°	29' 6"	°	40 ft	°	50 ft	°	60 ft	°	70 FT	°	74' 6"
5	80	46,000										
8	74	34,500	79	24,000								
10	70	30,000	76	24,000	79	24,000						
12	66	25,000	73	24,000	76	22,000	79	20,000				
15	59	22,000	68	22,000	73	19,000	76	17,500	78	16,000	78	15,000
20	47	16,500	60	16,500	66	16,000	71	14,500	73	13,500	75	13,000
25	30	13,000	51	13,000	60	12,000	65	11,000	69	10,500	70	10,000
30			41	10,500	53	10,000	60	9,500	65	9,000	66	8,500
35			27	8,500	45	8,000	54	7,500	60	7,500	62	7,000
40					37	7,000	48	6,500	56	6,500	58	6,500
45					25	5,500	42	5,500	50	5,500	53	5,500
50							33	4,500	45	4,500	48	4,500
55							23	4,000	38	4,000	43	4,000
60									31	3,200	36	3,200
65									21	2,700	29	2,700
70											19	2,200

RATINGS ABOVE THE HEAVY LINE ARE BASE ON STRUCTURAL COMPETENCE AND NOT ON MACHINE STABILITY.

NOTE: Deductions must be made from rated loads for lifting accessories: Fixed jibs, telescopic jibs, overhaul balls, load hooks, snatch blocks and load blocks.



Maximum Load (lbs) 9/16 Cable	
1 Part Line 	6,000
2 Part Line 	12,000
3 Part Line 	18,000
4 Part Line 	24,000

WHL23TC100 - LOAD OPERATING RADIUS (FEET)

MAXIMUM RATED LOAD IN LBS. WITH OUTRIGGERS FULLY EXTENDED												
LOADED OPERATING RADIUS	LOADED BOOM ANGLE	RETRACTED BOOM LENGTH	LOADED BOOM ANGLE	BOOM LENGTH	LOADED BOOM ANGLE	BOOM LENGTH	LOADED BOOM ANGLE	BOOM LENGTH	LOADED BOOM ANGLE	BOOM LENGTH	LOADED BOOM ANGLE	EXTENDED BOOM LENGTH
FEET	°	30'	°	45 ft	°	60 ft	°	75 ft	°	90 FT	°	100 ft
5	80	46,000										
8	74	33,500	80	24,000								
10	70	28,200	77	24,000								
12	66	24,500	74	23,500	78	16,000						
15	60	19,000	70	17,500	75	14,200	78	12,000				
20	47	13,750	63	15,500	70	13,000	74	10,000	77	7,800	78	7,300
25	31	10,500	56	12,000	65	10,000	70	9,000	74	6,500	75	6,200
30			48	9,300	60	8,500	66	8,000	70	6,000	73	5,700
35			39	7,300	55	7,000	62	6,500	67	5,800	70	5,200
40			26	5,800	48	5,800	58	5,200	64	5,000	67	4,700
45				4,500	44	4,500	53	4,500	60	4,400	63	4,200
50				3,500	41	3,500	48	3,500	56	3,500	60	3,500
55				3,000	38	3,000	43	3,200	52	3,200	57	3,200
60							37	2,500	48	2,500	53	2,500
65							30	2,100	44	2,200	50	2,200
70							20	1,600	39	1,600	46	1,600
75									33	1,200	41	1,200
80									27	1,000	37	1,000
85									18	600	32	600
90											25	400

RATINGS ABOVE THE HEAVY LINE ARE BASE ON STRUCTURAL COMPETENCE AND NOT ON MACHINE STABILITY.

NOTE: Deductions must be made from rated loads for lifting accessories: Fixed jibs, telescopic jibs, overhaul balls, load hooks, snatch blocks and load blocks.

