 徐工集团 · 臂架机械

# QY70K

SYSTEMIC OPTIMIZATION & UPGRADE

最大起重能力  
Max. Total Rated Lifting Load



70t

主臂最大起升高度  
Full-extend Boom Lifting Height



42m

副臂最大起升高度  
Full-extend Boom+Jib Lifting Height




58m



**The Series of Construction Crane**

全地面起重机  汽车起重机  履带式起重机

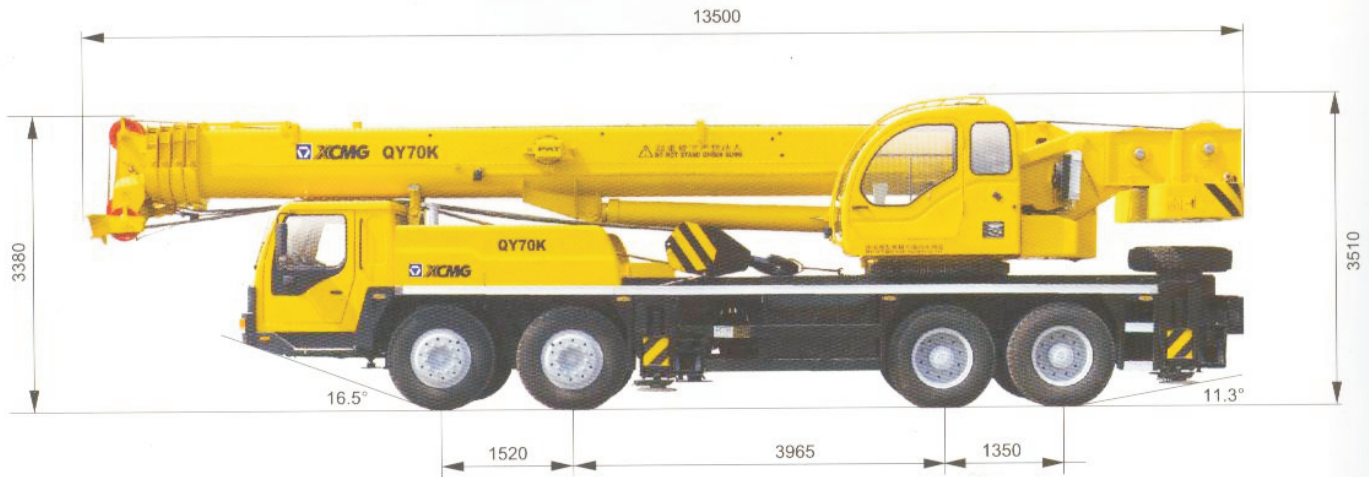
All-Terrain Crane Series  Truck Crane Series  Crawler Crane Series

 徐州重型机械有限公司



# QY70K 全液压汽车起重机

## 外形尺寸 Dimensions



### 尺寸参数 Dimensions

整机全长 Overall length	13500mm
整机全宽 Overall width	2800mm
整机全高 Overall height	3510mm



### 重量参数 Weight

行驶状态整机重量 Dead weight in travel state	41000kg
轴荷 Axle load	
前轴 Front axle	15000kg
后轴 Rear axle	26000kg



### 动力参数 Power

发动机型号 Engine model	WD615.44	WD615.46
发动机额定功率 Engine rated output	235/2200kw/(r/min)	266/2208kw/(r/min)
发动机额定扭矩 Engine rated torque	1250/1500N.m/(r/min)	1460/1400N.m/(r/min)
发动机额定转速 Max.travel speed	2200r/min	2200r/min



### 行驶参数 Travel

最高行驶速度 Max.travel speed	75km/h	75km/h
最小转弯直径 Min.turning diameter	24m	24m
最小离地间隙 Min.ground clearance	270mm	270mm
接近角 Approach angle	16.5°	16.5°
离去角 Departure angle	11.3°	11.3°
制动距离 (车速为30km/h) Braking distance(at 30km/h)	10m	10m
最大爬坡能力 Max.gradeability	35%	40%
百公里油耗 Fuel consumption of 100km	42L	42L



### 主要性能参数 Lifting performance

最大额定总起重重量 Max.total rated lifting load	70t
最小额定幅度 Min.rated working radius	3m
转台尾部回转半径 Turning radius at swing table tail	3550mm
最大起重力矩 Max.load moment	
基本臂 Base boom	2303kN.m
最长主臂 Full-extend boom	1043kN.m
最长主臂 + 副臂 Full-extend boom+Jib	492.8kN.m
支腿距离 Outrigger extension distance	
纵向/横向 Longitudinal/Lateral	5.75/6.9m
起升高度 Lifting height	
基本臂 Base boom	11.2m
最长主臂 Full-extend boom	42m
最长主臂 + 副臂 Full-extend boom+Jib	58m



### 工作速度参数 Working speed

起重臂全程起臂 Boom raising	75s
起重臂伸缩时间 Boom telescoping time	
全程全伸/缩 Full - extending / retracting	150/100s
最大回转速度 Max.slewing speed	2.0r/min
支腿伸缩时间 Outrigger telescoping time	
水平支腿同时伸/缩 Outrigger beam extending/retracting synchronously	30/20s
垂直支腿同时伸/缩 Outrigger jack extending/retracting synchronously	35/12s
起升速度 (单绳) Hoisting speed(single rope)	
主起升机构满载/空载 Main winch with full load/no load	75/130m/min
副起升机构满载/空载 Auxiliary winch with full load/no load	98/108m/min



# FULL HYDRAULIC TRUCK CRANE



**主臂起重性能(两块配重) Total rated lifting load for boom (Two set of counterweight) (表一 Table 1)**

支腿全伸, 不支第五支腿, 吊臂位于起重机侧方或后方; 支起第五支腿, 360° 全回转作业  
Full-extend outrigger, without the 5th outrigger, boom at the side or the rear, or with the 5th outrigger, 360° swing

工作幅度 Working radius m	基本臂 Base boom 11.2m	中长臂 Mid-extend boom 15.05m	中长臂 Mid-extend boom 18.9m	中长臂 Mid-extend boom 26.6m	中长臂 Mid-extend boom 34.3m	全伸臂 Full-extend boom 42m
3	70000					
3.5	63500					
4	54500	46500	36500			
5	47000	40500	35500	22500		
6	38500	33500	33500	22500		
7	29500	26500	25500	21500	17000	
8	22500	21500	21300	19500	16000	
9	17500	17500	17000	17000	15000	9200
10		14000	13800	15200	13500	8900
12		9800	9500	10600	11600	8100
14			6600	8000	9300	7400
15			5600	7000	8000	7100
16			5000	6000	7000	6500
18				4800	5500	5500
20				3800	4200	4800
22				2850	3200	3800
24					2500	3000
26					1900	2300
28					1500	1900
29					1100	1600
30					850	1400
32						1100
34						850
36						600

性能表使用说明:

- ◆ 表中所列起重量是在平整坚固的地面上本机所能保证的最大起重量。
- ◆ 由于性能表是阶梯形的有级数值, 所以, 当实际工作幅度处于表中两个数值之间时, 应选择最接近的较大幅度值所对应的起重量。
- ◆ 起重臂的伸缩方式为顺序加同步的伸缩方式, 即伸臂时必须全伸二节臂后再伸三四五节臂, 缩臂时将三四五全缩后再缩二节臂。
- ◆ 表中所列额定起重重量包括吊钩和吊具的重量, 表中的工作幅度是包括吊钩的变形量在内的实际值。
- ◆ 主臂起重性能表中所列参数是指不带副臂时的额定起重重量, 当主臂臂头装有副臂时, 主臂的额定起重重量根据实际情况, 应减去2000kg。
- ◆ 臂端滑轮的起重性能同主臂的性能, 但最大起重重量不得超过4吨。

Notes to the tables:

- ◆ The data given in the tables are the maximum lifting capacity when the crane is set up on level and firm ground.
- ◆ The data given in the tables are the step type values. When the actual working radius is between two values, the nearest larger value should be selected acc. to the rated lifting load.
- ◆ The boom telescoping is sequence plus synchronous. When extending boom, first extend fully the 2nd boom section, then the 3rd, 4th and 5th boom sections. When retracting boom, first retract fully the 3rd, 4th and 5th boom sections, then the 2nd boom section.
- ◆ The total rated lifting loads in the table include the weight of hook block and slings, and the working radii in the table are the actual values including the deflection of boom under load.
- ◆ The total rated lifting load for boom is based on boom tip not attached with jib, if with jib, the lifting load should be deducted 2000kg.
- ◆ The total rated lifting load for single top (auxiliary boom sheave) are the same as those for main boom, but the max. lifting load must not exceed 4t.



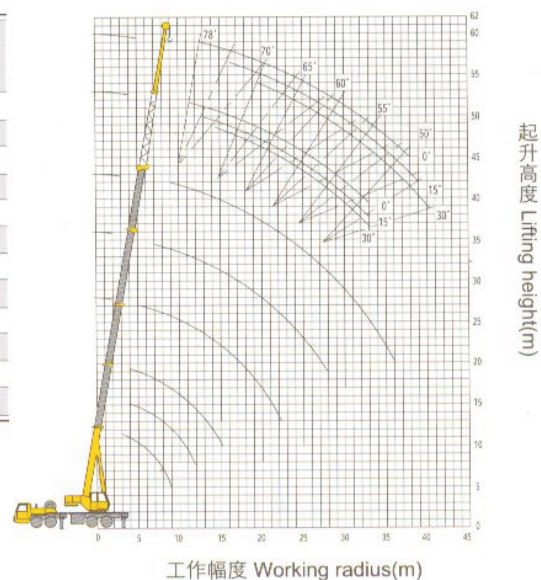
**副臂起重性能(两块配重) Total rated lifting load for jib (Two set of counterweight) (表二 Table 2)**

支腿全伸6.9m, 不用第五支腿时, 吊臂位于起重机侧方或后方; 用第五支腿时, 360° 作业  
Full-extend outrigger, without the 5th outrigger, boom at the side or the rear, or with the 5th outrigger, 360° swing

主臂仰角 Boom angle (°)	主臂 Boom 42m					
	副臂 Jib 8.5m			副臂 Jib 15m		
	0°	15°	30°	0°	15°	30°
78	4000	2700	2400	2500	1400	1100
75	3600	2500	2300	2100	1250	1040
72	3200	2300	2200	1800	1150	990
70	2900	2200	2100	1700	1100	950
65	2400	2000	1900	1400	950	880
60	1850	1800	1700	1200	880	830
55	1250	1200	1100	900	800	780
50	850	800	700	610	550	500

吊钩重量  
Weight of hook block: 100kg (4吨用 For 4t)

注: 公司保留随技术改进而修改技术参数及部件的权利  
All specifications are subject to technical modifications without notice



▲ 起升高度曲线 Lifting height curves