

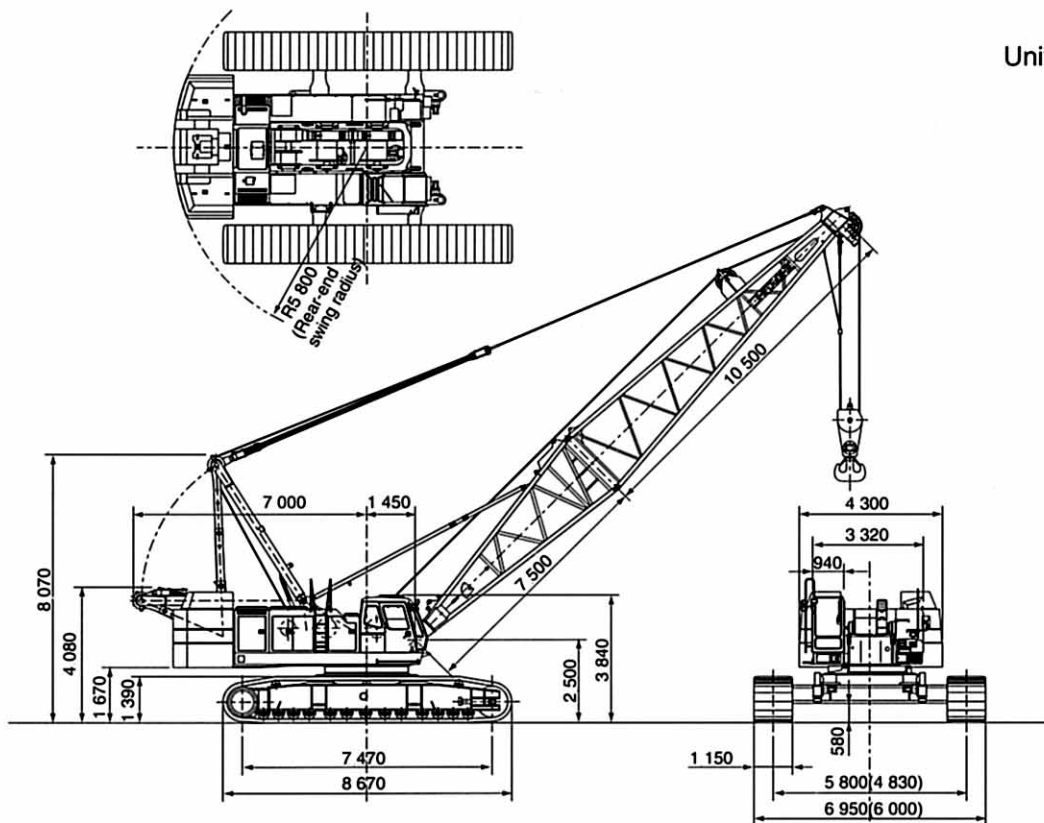
SPECIFICATIONS

HITACHI CX1800

HYDRAULIC CRAWLER CRANE

Max. Lifting Capacity: 180 000 kg

■ Dimensions



Dimensions shown in parentheses are with tracks retracted.

■ Specifications

Maximum rated load	ton x m	180 x 5.0
Basic boom length	m	18
Max. boom length	m	87
Jib length	m	13 ~ 37
Max. boom with jib length	m	72 +37
Main hoist drum	m/min	110/62/31*
Aux. hoist drum	m/min	110/62/31*
Boom hoist drum	m/min	27 x 2 (2 Drums)*
Swing speed	min ⁻¹ (rpm)	1.9/1.1 (1.9/1.1)
Travel speed	km/h	1.2/0.8*
Gradeability	% (°)	30 (16)
Engine model		ISUZU A-6RB1T
Rated power	kW/min ⁻¹ (PS/rpm)	221/2 000 (300/2 000)
Ground pressure	kPa (kgf/cm ²)	89.2 (0.91)
Operating weight	ton	168 (Equipped with 18 m boom and 180 ton capacity hook)

NOTE: Data expressed above are in SI units (International system of Unit), followed by data in conventional units in parentheses.

* Data in the crane mode will vary with the load.

■ Component Weights and Dimensions for Transport

Components	Weight (ton)	Quan.	Length X Width X Height (m)			Remarks	
Basic machine	Basic machine	33.90	1	7.12	X 3.40	X 3.15	Excluding ropes, gantry (H, L), track beam, and self-loading device
	Basic machine	40.70	1	8.84	X 3.40	X 3.56	Including ropes, gantry (H, L), and bridge. Excluding track beam and self-loading device.
	Track beam	5.70	2	6.00	X 0.55	X 0.55	
	Side frame (one side)	19.40	2	8.67	X 1.15	X 1.39	
	Self-loading device	0.38	4	0.80	X 0.75	X 0.91	Including float
	Gantry (H)	3.60	1	7.70	X 1.67	X 0.72	Including hanger
	Gantry (L)	0.30	2	1.70	X 0.30	X 1.12	Including cylinder
	Counterweight (A)	18.00	1	4.30	X 1.79	X 0.84	
	Counterweight (B)	16.80	1	4.29	X 1.79	X 0.62	
	Counterweight (C)	5.30	1	1.33	X 1.07	X 0.70	
	Counterweight (D)	8.30	1	1.73	X 1.30	X 0.70	
	Counterweight (E)	8.30	1	1.73	X 1.30	X 0.70	
	Counterweight (F)	5.20	1	1.57	X 1.06	X 0.75	
	Counterweight (G)	5.20	1	1.57	X 1.06	X 0.75	
Crane front	Lower boom 7.5 m	3.10	1	7.72	X 2.47	X 2.50	
	Upper boom 10.5 m	3.20	1	10.94	X 2.24	X 2.29	
	Boom backstop	0.14	2	5.45	X 0.26	X 0.26	
	Bridge	0.51	1	2.10	X 0.69	X 0.33	
	Boom mast	1.54	1	10.17	X 1.36	X 1.19	
	Boom insert 3 m (A)	0.88	1	3.14	X 2.47	X 2.40	
	Boom insert 3 m (B)	1.38	1	3.14	X 2.47	X 2.59	
	Boom insert 6 m	1.22	1	6.14	X 2.47	X 2.40	
	Boom insert 9 m	1.62	1	9.14	X 2.47	X 2.36	
	Boom insert 12 m	1.92	1	12.14	X 2.47	X 2.36	
	Lower jib 5 m	0.30	1	5.11	X 1.24	X 0.97	
	Upper jib 5 m	0.45	1	5.43	X 1.24	X 1.37	
	Jib insert 3 m	0.15	1	3.08	X 1.25	X 1.09	
	Jib insert 6 m	0.26	1	6.08	X 1.25	X 1.09	
	Jib mast	0.55	1	6.14	X 1.10	X 0.62	
	Aux. jib	0.39	1	2.22	X 1.04	X 1.43	
	180 ton hook	2.30	1	2.35	X 0.92	X 0.93	
	100 ton hook	1.40	1	2.13	X 0.75	X 0.54	
	60 ton hook	1.20	1	2.12	X 0.74	X 0.35	
	25 ton hook	0.85	1	1.74	X 0.74	X 0.38	
13 ton hook	0.50	1	1.18	X 0.47	X 0.47		

■ Standard Equipment

BASIC MACHINE

Undercarriage

- Crawler-type undercarriage (with 1 150 mm shoes)

Upperstructure

- Front lights (2 pcs)
- Rearview mirrors (left and right)
- Boom hoist drum check mirror
- Centralized lubrication system (for gantry and swing circle)
- Electric refuel device
- Ladder (right)
- Undercover (at upperstructure bottom)
- Cab climbing step
- Ultra slow speed controller
- Slow boom hoisting stop
- Constant swing speed controller
- Electric accelerator grip
- Gantry hoist cylinders
- Boom foot pin assembling device
- Drum rotation sensing system
- 67.1 ton counterweight
- Standard tool kit

Cab

- Intermittent wipers (front and roof windows)
- Washers (front and roof windows)
- Rolled sunshade (roof window)
- Sunvisor
- Air conditioner
- Floor mat
- Room light
- Auto-tuning clock radio (AM/FM)
- Cigarette lighter
- Ashtray
- Brake mode selector switch (interlocked)
- Electric tilt-type stand

Safety Devices

- Swing lock
- Drum pawl lock (main/auxiliary hoist and boom hoist)
- Swing alarm (buzzer & lamp)
- Fail safe brake system
- Pilot control shut-off lever
- Before-work check monitor

FRONT ATTACHMENTS

Crane

- 18 m basic boom (lower 7.5 m, upper 10.5 m)
- Boom stop
- Boom angle indicator
- 180 ton hook
- Main hoist rope (φ28 mm x 370 m)
- Boom hoist rope (φ22 mm x 350 m)
- Moment limiter
- Overhoist prevention device (main hook, boom hoist, secondary)

Clamshell

- 18 m basic boom (lower 7.5 m, upper 10.5 m)
- Boom stop
- Boom angle indicator
- Open/close and suspend rope disengagement prevention device (for tubular chord boom)
- Open/close rope (φ28 mm x 120 m)*
- Suspend rope (φ28 mm x 110 m)*
- Hydraulic tagline (φ10 mm x 55 m rope included) and Boom hoist rope (φ22 mm x 350 m)

* Open/close and suspend ropes are determined based on 33 m boom length and 12 m digging depth.

These specifications are subject to change without notice. Illustrations show the standard models, and may or may not include optional equipment, accessories, and all standard equipment.

Ⓞ Hitachi Construction Machinery Co., Ltd.

Head Office: Nippon Bldg., 6-2, 2-chome, Ohtemachi,
Chiyoda-ku, Tokyo 100-0004, Japan
Telephone: Tokyo (03) 3245-6390
Facsimile: Tokyo (03) 3246-2609