

MANISCOPIE

MT 523 MLT 523T



- Lift capacity: 5,000 lb.
- Maximum lift height: 16 ft. 2 in.
- Maximum forward reach: 9 ft. 7 in.
- Hydrostatic transmission
- Four wheel drive
- Three steering modes

MLT 523T Shown



MANITOU

MT 523 / MLT 523T



Lift Capacity: MT 523 MLT 523T
 Maximum (24 in. load center)5,000 lb.
 Break out force on bucket teeth
 with tilting ram (ISO 8313)9,52310,516 lb.



Lift Height:
 Maximum lift height16 ft. 2 in.
 Maximum forward reach9 ft. 7 in.
 Times: unladen / loaded (in sec)
 Lifting6.3/7.16.0/6.7
 Lowering4.2/4.24.0/4.0
 Boom extension4.7/4.84.5/4.6
 Boom retraction3.0/2.53.0/2.4



Tires:
12.5/80 x 18 SGI 10PR



Forks:
 Length48 in.
 Thickness/width1.75 in. x 4 in.
 Maximum distance between forks32 in.
 Carriage rotation132°



Brakes:
 Hydraulic with oil immersed discs on front axle



Engine: MT 523 MLT 523T
 Perkins DieselPerkins 903-27903-27 Turbo
 Horsepower5467
 Capacity (3 cyl.)164164 cu.in.
 Max. Torque139 @ 1200 ..175 ft.lb. @ 1400
 InjectionDirect
 CoolingWater



Transmission:
 TypeHydrostatic
 Electro-hydraulic reversing shift
 Speeds forward/reverse1/1
 Maximum travel speed17 mph



Capacities: MT 523 MLT 523T
 PumpGear type
 Flow3300 PSI/22 gpm3700 PSI/24 gpm
 Flow divider with priority to steering and braking



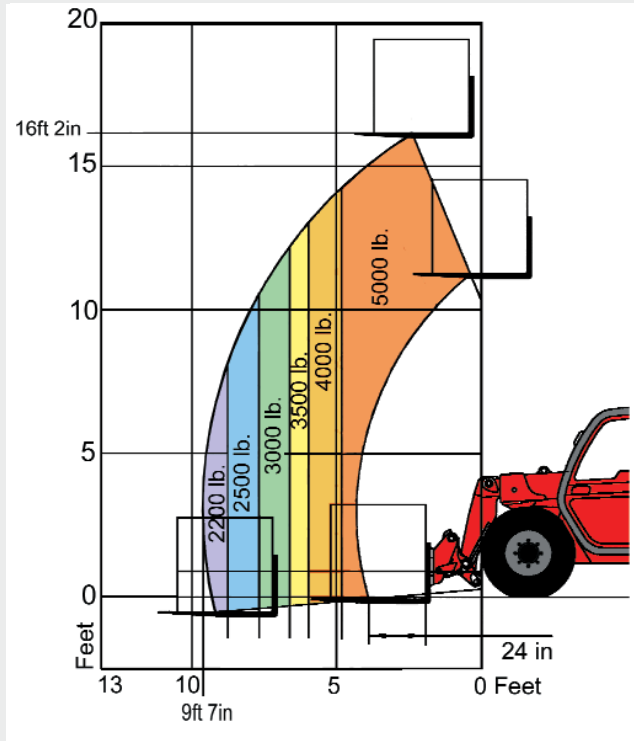
Capacities:
 Cooling system15.3 qt.
 Engine oil6.5 qt.
 Hydraulic oil27 gal.
 Fuel tank27.5 gal.



Specifications: MT 523 MLT 523T
 Weight (base unit)10,41710,737 lb.
 Turning radius (outside wheels)122 in.
 Overall height79 in.
 Overall width71 in.
 Overall length (without forks)166 in.
 Ground clearance12 in.
 Drawbar pull6,6006,800 lb.

LOAD CAPACITY CHART

EQUIPPED WITH OPTIONAL 48" CARRIAGE AND FORKS
 (OPTIONAL ATTACHMENTS CAN DERATE THIS CHART)



Capacities shown in pounds/feet are the maximum recommended load limits at the indicated extensions of the boom. Capacity ratings are based on a 48" homogeneous cube and are in accordance with ANSI/ASME B56.6 stability standards. Capacity reductions must be made for extended load centers and when used with various other attachments, contact MANITOU NORTH AMERICA, INC.

DIMENSIONS:

A48	L2.25
B87	N56
C43	O4
C ₁40	P ₂39°
D166	P ₃31°
D ₁163	R116
D ₂141	S255
E213	T128
F59	U ₁79
F ₁59	U ₂91
G12	V161
G ₁14	V ₁43
G ₂13	V ₂122
I36	W71
J34	Y12°
K40	Z120°

STANDARD EQUIPMENT:

- Enclosed Cab (MLT only)
- Hydraulic Power Steering
- Three Steering Modes
- Full Time 4 Wheel Drive
- Limited Slip Front Axle
- Three Gear Outer Planetary Hubs
- Adjustable Seat
- Full Instrumentation
- Road Lights
- Horn
- Backup Alarm
- Wet Disc Brakes
- Parking Brake
- Quick Fit Tool System
- Automatic Attachment Leveling
- Hydraulic Lock-out Valves
- Auxiliary Boom Hydraulics
- Left & Right Side Mirrors
- Neutral Start Switch
- Tow Pin

OPTIONAL EQUIPMENT:

- A wide variety of attachments and options are available to meet the customer's individual applications

