

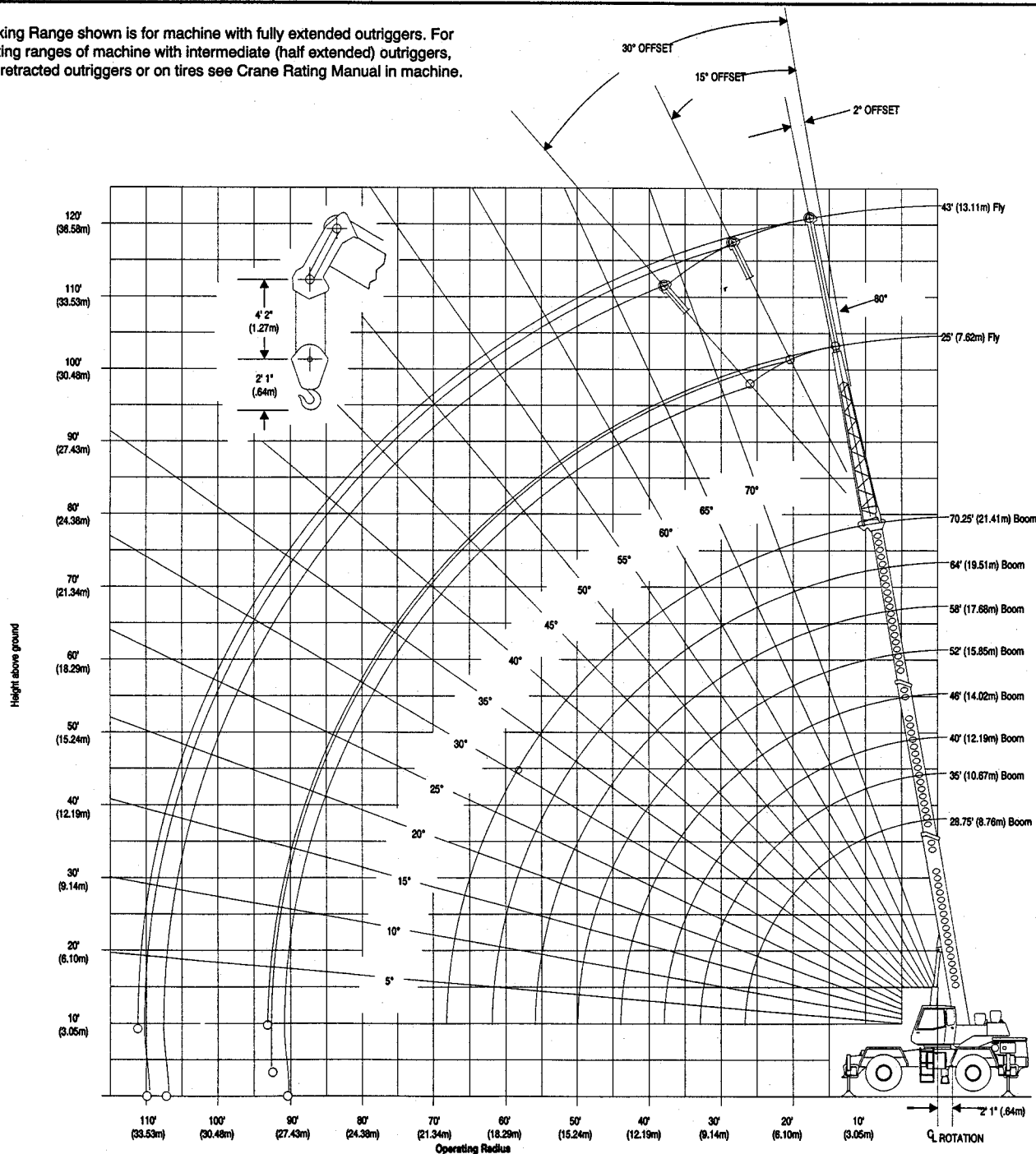
Lifting Capacities

Hydraulic Rough Terrain Crane

RTC-8028 28-ton (25.42 metric ton)

3-Section Boom

Working Range shown is for machine with fully extended outriggers. For working ranges of machine with intermediate (half extended) outriggers, fully retracted outriggers or on tires see Crane Rating Manual in machine.



Note: Boom and fly geometry shown are for unloaded condition and machine standing level on firm supporting surface. Boom deflection and subsequent radius and boom angle change must be accounted for when applying load to hook.

RTC-8028 Lifting Capacities

Refer to Operating Instructions page

28.75' - 70.25' (8.76m - 21.41m) 3-section boom - Outriggers Fully Extended

Outriggers Fully Extended																			
28.75' - 58' (8.76m - 17.68) Main Boom - Outriggers Fully Extended																			
LOAD RADIUS (ft./m)	28.75' (8.76m)			35' (10.67m)			40' (12.19m)			46' (14.02m)			52' (15.85m)			58' (17.68m)			LOAD RADIUS ft./m
	LOADED BOOM ANGLE (deg.)	360° (lbs./kgs)	OVER FRONT (lbs./kgs)	LOADED BOOM ANGLE (deg.)	360° (lbs./kgs)	OVER FRONT (lbs./kgs)	LOADED BOOM ANGLE (deg.)	360° (lbs./kgs)	OVER FRONT (lbs./kgs)	LOADED BOOM ANGLE (deg.)	360° (lbs./kgs)	OVER FRONT (lbs./kgs)	LOADED BOOM ANGLE (deg.)	360° (lbs./kgs)	OVER FRONT (lbs./kgs)	LOADED BOOM ANGLE (deg.)	360° (lbs./kgs)	OVER FRONT (lbs./kgs)	
10 3.05m	66.0	56,000 25 401	56,000 25 401	70.5	49,700 22 544	49,700 22 544	73.5	49,000 22 226	49,000 22 226	76.0	48,300 21 909	48,300 21 909	78.0	48,000 21 773	48,000 21 773				10 3.05
12 3.66m	61.5	55,300 25 084	55,300 25 084	67.0	49,700 22 544	49,700 22 544	70.5	49,000 22 226	49,000 22 226	73.5	48,300 21 909	48,300 21 909	76.0	48,000 21 773	48,000 21 773	78.0	45,900 20 820	45,900 20 820	12 3.66
15 4.57m	54.5	43,300 19 641	43,300 19 641	61.5	43,300 19 641	43,300 19 641	66.0	43,300 19 641	43,300 19 641	69.5	43,300 19 641	43,300 19 641	72.5	41,400 18 779	41,400 18 779	74.5	39,300 17 826	39,300 17 826	15 4.57
20 6.10m	40.5	31,200 14 152	31,200 14 152	52.0	31,200 14 152	31,200 14 152	57.5	31,200 14 152	31,200 14 152	62.5	31,200 14 152	31,200 14 152	66.5	31,200 14 152	31,200 14 152	69.5	31,200 14 152	31,200 14 152	20 6.10
25 7.62m	20.5	23,500 10 660	23,500 10 660	40.0	23,500 10 660	23,500 10 660	48.5	23,500 10 660	23,500 10 660	55.0	23,500 10 660	23,500 10 660	60.0	23,500 10 660	23,500 10 660	64.0	23,500 10 660	23,500 10 660	25 7.62
30 9.14m				24.5	19,200 8 709	19,200 8 709	37.5	19,200 8 709	19,200 8 709	47.0	19,200 8 709	19,200 8 709	53.5	19,200 8 709	19,200 8 709	58.0	19,200 8 709	19,200 8 709	30 9.14
35 10.67m							23.0	15,100 6 849	15,900 7 212	37.5	15,100 6 849	15,900 7 212	46.0	15,100 6 849	15,900 7 212	52.0	15,100 6 849	15,900 7 212	35 10.67
40' 12.19m										25.0	12,000 5 443	13,400 6 078	37.5	12,000 5 443	13,400 6 078	45.0	12,000 5 443	13,400 6 078	40 12.19
45' 13.72m													26.5	9,800 4 445	11,400 5 171	37.5	9,800 4 445	11,400 5 171	45 13.72
50' 15.24m																27.5	8,100 3 674	9,900 4 491	50 15.24
0 Angle Capacity		12,000 5 443	14,000 6 350		8,300 3 765	10,600 4 808		6,500 2 948	8,800 3 992		5,000 2 268	6,000 2 722		4,000 1 814	5,500 2 495		3,200 1 452	4,500 2 041	

Outriggers Fully Extended										
64' - 70.25' (19.51-21.41M) Main Boom										
LOAD RADIUS (ft./m)	64' (19.51m)			70.25' (21.41m)			25' Fixed Fly (7.62m) + 70.25' Main Boom (21.41m)			
	LOADED BOOM ANGLE (deg.)	360° (lbs./kgs)	OVER FRONT (lbs./kgs)	LOADED BOOM ANGLE (deg.)	360° (lbs./kgs)	OVER FRONT (lbs./kgs)	LOADED BOOM ANGLE (deg.)	360° (lbs./kgs)	OVER FRONT (lbs./kgs)	LOAD RADIUS (ft./m)
15 4.57	76.5	37,500 17 010	37,500 17 010	78.5	34,900 15 831	34,900 15 831				15 4.57
20 6.10	72.0	30,100 13 653	30,100 13 653	74.0	28,200 12 792	28,200 12 792	78.5	16,200 7 348	16,200 7 348	20 6.10
25 7.62	67.0	23,500 10 660	23,500 10 660	70.0	23,500 10 660	23,500 10 660	75.5	13,900 6 305	13,900 6 305	25 7.62
30 9.14	62.0	19,200 8 709	19,200 8 709	65.0	19,200 8 709	19,200 8 709	72.5	12,200 5 534	12,200 5 534	30 9.14
35 10.67	56.5	15,100 6 849	15,900 7 212	60.5	15,100 6 849	15,900 7 212	69.5	10,900 4 944	10,900 4 944	35 10.67
40 12.19	51.0	12,000 5 443	13,400 6 078	55.5	12,000 5 443	13,400 6 078	66.0	9,800 4 445	9,800 4 445	40 12.19
45 13.72	44.5	9,800 4 445	11,400 5 171	50.0	9,800 4 445	11,400 5 171	62.5	8,800 3 992	8,800 3 992	45 13.72
50 15.24	37.5	8,100 3 674	9,900 4 491	44.5	8,100 3 674	9,900 4 491	59.0	8,100 3 674	8,100 3 674	50 15.24
55 16.76	28.5	6,800 3 084	8,600 3 901	37.5	6,800 3 084	8,600 3 901	55.5	7,500 3 402	7,500 3 402	55 16.76
60 18.29	16.0	5,700 2 586	7,500 3 402	30.0	5,700 2 586	7,500 3 402	52.0	6,600 2 994	6,900 3 130	60 18.29
65 19.81				19.5	4,900 2 223	6,600 2 994	47.5	5,700 2 586	6,300 2 858	65 19.81
70 21.34							43.0	4,900 2 223	5,800 2 631	70 21.34
75 22.86							38.5	4,300 1 950	5,400 2 449	75 22.86
80 24.38							33.0	3,700 1 678	5,000 2 268	80 24.38
85 25.91							26.5	3,300 1 497	4,600 2 087	85 25.91
90 27.43m							17.0	2,800 1 270	4,200 1 905	90 27.43
0 Angle Capacity		2,600 1 179	3,700 1 678		2,200 998	3,100 1 406	Minimum Boom Angle For No Load 0°			

Outriggers Fully Extended							
25' (7.62m) Offset Fly + 70.25' (21.41m) Main Boom							
LOAD RADIUS (ft./m)	2° OFFSET		15° OFFSET		30° OFFSET		LOAD RADIUS (ft./m)
	LOADED BOOM ANGLE (deg.)	LOAD (lbs./kgs)	LOADED BOOM ANGLE (deg.)	LOAD (lbs./kgs)	LOADED BOOM ANGLE (deg.)	LOAD (lbs./kgs)	
20 6.10	78.5	13,000 5 897					20 6.10
25 7.62	75.5	11,900 5 398	79.0	9,100 4 128			25 7.62
30 9.14	72.5	10,900 4 944	76.0	8,500 3 856	79.0	6,400 2 903	30 9.14
35 10.67	69.0	9,800 4 445	72.5	7,800 3 538	76.0	6,000 2 722	35 10.67
40 12.19	66.0	9,200 4 173	69.5	7,200 3 266	72.5	5,700 2 586	40 12.19
45 13.72	62.5	8,500 3 856	68.0	6,600 2 994	69.0	5,400 2 449	45 13.72
50 15.24	59.0	7,700 3 493	62.5	6,100 2 767	65.5	5,100 2 313	50 15.24
55 16.76	55.5	7,100 3 221	59.0	5,600 2 540	62.0	4,800 2 177	55 16.76
60 18.29	51.5	6,300 2 858	55.0	5,200 2 359	58.0	4,400 1 996	60 18.29
65 19.81	47.5	5,400 2 449	51.0	4,800 2 177	53.5	4,200 1 905	65 19.81
70 21.34	43.0	4,600 2 087	46.5	4,500 2 041	49.0	3,900 1 769	70 21.34
75 22.86	38.5	4,000 1 814	41.5	4,100 1 860	44.0	3,700 1 678	75 22.86
80 24.38	33.0	3,400 1 542	36.0	3,500 1 588	38.0	3,500 1 588	80 24.38
85 25.91	26.5	2,900 1 315	29.5	3,000 1 361	30.5	3,000 1 361	85 25.91
90 27.43	17.5	2,500 1 134	20.0	2,600 1 179	17.5	2,500 1 134	90 27.43

Minimum Boom Angle For No Load 0°

RTC-8028 Lifting Capacities

Refer to Operating Instructions page 9

28.75' - 70.25' (8.76m - 21.41m) 3-section boom - Outriggers Fully Extended

Outriggers Fully Extended													
25' - 43' (7.62m - 13.11m) Offset Telescoping Fly + 70.25' (21.41m) Main Boom													
LOAD RADIUS (ft./m)	25' (7.62m) Fly						43' (13.11m) Fly						LOAD RADIUS (ft./m)
	2° OFFSET		15° OFFSET		30° OFFSET		2° OFFSET		15° OFFSET		30° OFFSET		
	LOADED BOOM ANGLE (deg.)	LOAD (lbs./kgs)	LOADED BOOM ANGLE (deg.)	LOAD (lbs./kgs)	LOADED BOOM ANGLE (deg.)	LOAD (lbs./kgs)	LOADED BOOM ANGLE (deg.)	LOAD (lbs./kgs)	LOADED BOOM ANGLE (deg.)	LOAD (lbs./kgs)	LOADED BOOM ANGLE (deg.)	LOAD (lbs./kgs)	
20 6.10	78.5	12,700 5 761											20 6.10
25 7.62	75.5	11,500 5 216	79.0	8,800 3 992			78.0	4,900 2 223					25 7.62
30 9.14	72.5	10,600 4 808	76.0	8,200 3 720	79.0	6,100 2 767	75.0	4,700 2 132					30 9.14
35 10.67	69.5	9,900 4 355	72.5	7,500 3 402	76.0	5,700 2 586	72.5	4,500 2 041	78.0	4,000 1 814			35 10.67
40 12.19	66.0	8,700 3 946	69.5	6,900 3 130	72.5	5,400 2 449	70.0	4,300 1 950	75.0	3,900 1 769			40 12.19
45 13.72	63.0	8,000 3 629	66.0	6,400 2 903	69.0	5,100 2 313	67.5	4,100 1 860	72.5	3,700 1 678	77.5	3,000 1 361	45 13.72
50 15.24	59.5	7,400 3 357	62.5	5,900 2 676	65.5	4,800 2 177	65.0	3,900 1 769	70.0	3,500 1 588	74.5	2,900 1 315	50 15.24
55 16.76	56.0	6,700 3 039	59.0	5,300 2 404	62.0	4,500 2 041	62.0	3,800 1 724	67.0	3,300 1 497	71.5	2,700 1 225	55 16.76
60 18.29	52.0	5,900 2 676	55.0	4,900 2 223	58.0	4,200 1 905	59.5	3,700 1 678	64.0	3,100 1 406	68.5	2,600 1 179	60 18.29
65 19.81	48.0	5,000 2 268	51.0	4,500 2 041	53.5	3,900 1 769	56.5	3,500 1 588	61.0	2,900 1 315	65.5	2,500 1 134	65 19.81
70 21.34	43.5	4,300 1 950	46.5	4,200 1 905	49.0	3,600 1 633	53.0	3,200 1 452	58.0	2,800 1 270	62.0	2,400 1 089	70 21.34
75 22.86	38.5	3,600 1 633	41.5	3,800 1 724	44.0	3,400 1 542	50.0	3,000 1 361	54.5	2,600 1 179	58.5	2,300 1 043	75 22.86
80 24.38	33.0	3,100 1 406	36.0	3,200 1 452	38.0	3,200 1 452	46.5	2,800 1 270	51.0	2,500 1 134	55.0	2,200 998	80 24.38
85 25.91	26.5	2,600 1 179	29.0	2,700 1 225	30.0	2,700 1 225	42.5	2,700 1 225	47.0	2,400 1 089	51.0	2,100 953	85 25.91
90 27.43	17.5	2,200 998	19.5	2,200 998	17.5	2,200 998	38.5	2,500 1 134	43.0	2,300 1 043	46.5	2,000 907	90 27.43
95 28.96							34.0	2,300 1 043	38.5	2,200 998	41.5	2,000 907	95 28.96
100 30.48							28.5	2,100 953	33.0	2,000 907	35.0	1,900 862	100 30.48
105 32.00									26.0	1,900 862	26.5	1,900 862	105 32.00

Minimum Boom Angle For No Load 0°

Drum wire rope capacities

Capacity		
Rope Per Layer		
Wire Rope Layer	Feet	Meters
1	62	18.90
2	69	21.03
3	76	23.16
4	82	25.0
5	89	27.13

Capacity		
Total Wire rope		
Wire Rope Layer	Feet	Meters
1	62	18.90
2	131	39.93
3	206	62.79
4	289	88.09
5	378	115.21

Line Speeds and Pulls

Wire Rope	1M Main or Auxiliary Winch 10-5/8" (.27m) diameter drum				Speed	2M Main or Auxiliary Winch 10-5/8" (.27m) diameter drum			
	Line Speeds		Available Line Pulls			Line Speeds		Available Line Pulls	
	(fpm)	(m/mln)	(lbs.)	(kgs)		(fpm)	(m/mln)	(lbs.)	(kgs)
1	159	48.46	10,547	4 748	Low	162	49.38	10,360	4 699
					High	270	82.30	5,744	2 605
2	176	53.64	9,492	4 305	Low	180	54.86	9,325	4 230
					High	300	91.44	5,170	2 345
3	194	59.13	8,630	3 915	Low	197	60.05	8,477	3 845
					High	330	100.58	4,700	2 132
4	212	64.62	7,911	3 588	Low	215	65.53	7,771	3 525
					High	360	109.73	4,309	1 955
5	229	69.80	7,302	3 212	Low	233	71.02	7,174	3 254
					High	390	118.87	3,977	1 804

Capacity Deductions for Auxiliary Load Handling Equipment. Lifting from Main Boom with:

Aux. Equipment	Deduct
Aux. Head Attached	125 lbs. (57 kg)
25' (7.62m) Fixed Fly Stowed On Base	300 lbs. (136 kg)
25' (7.62m) Fixed Fly Erected But Unused	1,000 lbs. (454 kg)
25' (7.62m) Offset Fly Stowed On Base	500 lbs. (227 kg)
25' (7.62m) Offset Fly Erected But Unused	2,200 lbs. (998 kg)
25' - 43' (7.62m - 13.11m) Offset Telescoping Fly Stowed On Base	750 lbs. (340 kg)
25' - 43' (7.62m - 13.11m) Offset Telescoping Fly Erected But Unused (retracted)	2,900 lbs. (1 315 kg)
25' - 43' (7.62m - 13.11m) Offset Telescoping Fly Erected But Unused (extended)	3,900 lbs. (1 769 kg)

RTC-8028 Lifting Capacities

Refer to Operating Instructions page 9

28.75' - 70.25' (8.76m - 21.41m) 3-section boom - Intermediate (half extended) Outriggers

Intermediate (half extended) Outriggers																	
28.75'(8.76m) to 70.25'(21.41m) Main Boom																	
LOAD RADIUS (ft./m)	28.75' (8.76m)		35' (10.67m)		40' (12.19m)		46' (14.02m)		52' (15.85m)		58' (17.68m)		64' (19.51m)		70.25' (21.41m)		LOAD RADIUS (ft./m)
	LOADED BOOM ANGLE (deg.)	360° (lbs./kgs)	LOADED BOOM ANGLE (deg.)	360° (lbs./kgs)	LOADED BOOM ANGLE (deg.)	360° (lbs./kgs)	LOADED BOOM ANGLE (deg.)	360° (lbs./kgs)	LOADED BOOM ANGLE (deg.)	360° (lbs./kgs)	LOADED BOOM ANGLE (deg.)	360° (lbs./kgs)	LOADED BOOM ANGLE (deg.)	360° (lbs./kgs)	LOADED BOOM ANGLE (deg.)	360° (lbs./kgs)	
10 3.05	66.0	56,000 25 401	70.5	49,700 22 544	73.5	49,000 22 226	76.0	48,300 21 909	78.0	48,000 21 773							10 3.05
12 3.66	61.5	55,300 25 084	67.0	49,700 22 544	70.5	49,000 22 226	73.5	48,300 21 909	76.0	48,000 21 773	78.0	45,900 20 820					12 3.66
15 4.57	54.5	36,900 16 738	61.5	36,900 16 738	65.5	36,900 16 738	69.5	36,900 16 738	72.5	36,900 16 738	74.5	36,900 16 738	76.5	36,900 16 738	78.5	34,900 15 831	15 4.57
20 6.10	40.5	21,100 9 571	51.5	21,100 9 571	57.5	21,100 9 571	62.5	21,100 9 571	66.0	21,100 9 571	69.0	21,100 9 571	71.5	21,100 9 571	73.5	21,100 9 571	20 6.10
25 7.62	20.5	14,100 6 396	40.0	14,100 6 396	48.0	14,100 6 396	55.0	14,100 6 396	59.5	14,100 6 396	63.5	14,100 6 396	66.5	14,100 6 396	69.0	14,100 6 396	25 7.62
30 9.14			24.5	10,300 4 672	37.5	10,300 4 672	46.5	10,300 4 672	53.0	10,300 4 672	57.5	10,300 4 672	61.0	10,300 4 672	64.5	10,300 4 672	30 9.14
35 10.67					22.5	7,900 3 583	37.0	7,900 3 583	45.5	7,900 3 583	51.5	7,900 3 583	56.0	7,900 3 583	59.5	7,900 3 583	35 10.67
40 12.19							24.5	6,200 2 812	37.0	6,200 2 812	44.5	6,200 2 812	50.0	6,200 2 812	54.5	6,200 2 812	40 12.19
45 13.72									26.0	5,000 2 268	36.5	5,000 2 268	44.0	5,000 2 268	49.5	5,000 2 268	45 13.72
50 15.24											27.0	4,100 1 860	36.5	4,100 1 860	43.5	4,100 1 860	50 15.24
55 16.76													28.0	3,300 1 497	37.0	3,300 1 497	55 16.76
60 18.29													15.0	2,600 1 179	29.0	2,600 1 179	60 18.29
65 19.81															18.5	2,100 953	65 19.81
0° Angle Capacity		7,000 3 175		4,900 2 223		3,800 1 724		2,900 1 315		2,200 998		1,700 771		1,300 590		1,000 454	

Intermediate Outriggers			
25' (7.62m) fixed fly + 70.25' (21.41m) main boom			
LOAD RADIUS (ft./m)	LOADED BOOM ANGLE (deg.)	360° (lbs./kgs)	LOAD RADIUS (ft./m)
20 6.10	78.5	16,200 7 348	20 6.10
25 7.62	75.5	13,900 6 305	25 7.62
30 9.14	72.5	11,400 5 171	30 9.14
35 10.67	69.0	8,800 3 992	35 10.67
40 12.19	65.5	7,100 3 221	40 12.19
45 13.72	62.0	5,800 2 631	45 13.72
50 15.24	58.0	4,800 2 177	50 15.24
55 16.76	54.5	4,000 1 814	55 16.76
60 18.29	50.5	3,300 1 497	60 18.29
65 19.81	46.5	2,800 1 270	65 19.81
70 21.34	42.0	2,300 1 043	70 21.34
75 22.86	37.0	1,900 862	75 22.86
80 24.38	31.5	1,600 726	80 24.38
85 25.91	24.5	1,300 590	85 25.91
90 27.43	15.5	1,000 454	90 27.43
Minimum Boom Angle For No Load 14°			

Intermediate Outriggers							
25' (7.62m) fly + 70.25' (21.41m) main boom							
LOAD RADIUS (ft./m)	2° OFFSET		15° OFFSET		30° OFFSET		LOAD RADIUS (ft./m)
	LOADED BOOM ANGLE (deg.)	LOAD (lbs./kgs)	LOADED BOOM ANGLE (deg.)	LOAD (lbs./kgs)	LOADED BOOM ANGLE (deg.)	LOAD (lbs./kgs)	
20 6.10	78.5	13,000 5 897					20 6.10
25 7.62	75.5	11,900 5 398	79.0	9,100 4 128			25 7.62
30 9.14	72.5	10,900 4 944	76.0	8,500 3 856	79.0	6,400 2 903	30 9.14
35 10.67	69.0	8,700 3 946	72.5	7,800 3 538	76.0	6,000 2 722	35 10.67
40 12.19	65.5	6,900 3 130	69.5	7,200 3 266	72.5	5,700 2 586	40 12.19
45 13.72	62.0	5,500 2 495	66.0	5,900 2 676	69.0	5,400 2 449	45 13.72
50 15.24	58.5	4,500 2 041	62.0	4,800 2 177	65.5	5,100 2 313	50 15.24
55 16.76	55.0	3,700 1 678	58.5	3,900 1 769	61.5	4,200 1 905	55 16.76
60 18.29	51.0	3,000 1 361	54.5	3,300 1 497	57.5	3,400 1 542	60 18.29
65 19.81	47.0	2,500 1 134	50.0	2,700 1 225	53.0	2,800 1 270	65 19.81
70 21.34	42.5	2,000 907	45.5	2,200 998	48.0	2,300 1 043	70 21.34
75 22.86	37.5	1,600 726	40.5	1,800 816	43.0	1,900 862	75 22.86
80 24.38	32.0	1,300 590	35.0	1,400 635	37.0	1,500 680	80 24.38
85 25.91	25.5	1,000 454	28.5	1,100 499	29.0	1,100 499	85 25.91
Minimum Boom Angle For No Load 25.5°. Maximum Boom Length For 0° Boom Angle 62' (18.90m)							

Hydraulic Circuit Pressure Settings

Function	Pressure
Winch	3500 PSI 24 132 kPa
Outriggers	2500 PSI 17 237 kPa
Boom Hoist	3000 PSI 20 684 kPa
Telescope	2500 PSI 17 237 kPa
Swing	1900 PSI 13 100 kPa
Steering	2500 PSI 17 237 kPa
Hydraulic Controllers	500 PSI 3 447 kPa

RTC-8028 Lifting Capacities

Refer to Operating Instructions page 9

28.75' - 70.25' (8.76m - 21.41m) 3-section boom - Intermediate (half extended) Outriggers

Intermediate Outriggers													
25- 43' (7.62m - 13.12m) Offset Telescoping Fly + 70.25' (21.41m) Main Boom													
LOAD RADIUS (ft./m)	25' (7.62m) Fly						43' (13.12m) Fly						
	2° OFFSET		15° OFFSET		30° OFFSET		2° OFFSET		15° OFFSET		30° OFFSET		
	LOADED BOOM ANGLE (deg.)	LOAD (lbs./kgs)	LOADED BOOM ANGLE (deg.)	LOAD (lbs./kgs)	LOADED BOOM ANGLE (deg.)	LOAD (lbs./kgs)	LOADED BOOM ANGLE (deg.)	LOAD (lbs./kgs)	LOADED BOOM ANGLE (deg.)	LOAD (lbs./kgs)	LOADED BOOM ANGLE (deg.)	LOAD (lbs./kgs)	
20 6.10	78.5	12,700 5 761										20 6.10	
25 7.62	75.5	11,500 5 216	79.0	8,800 3 992			78.0	4,900 2 223				25 7.62	
30 9.14	72.5	10,600 4 808	76.0	8,200 3 720	79.0	6,100 2 767	75.0	4,700 2 132				30 9.14	
35 10.67	69.0	8,400 3 810	72.5	7,500 3 402	76.0	5,700 2 586	72.5	4,500 2 041	78.0	4,000 1 814		35 10.67	
40 12.19	65.5	6,600 2 994	69.5	6,900 3 130	72.5	5,400 2 449	70.0	4,300 1 950	75.0	3,900 1 769		40 12.19	
45 13.72	62.5	5,200 2 359	66.0	5,600 2 540	69.0	5,100 2 313	67.5	4,100 1 860	72.5	3,700 1 678	77.5	3,000 1 361	45 13.72
50 15.24	58.5	4,200 1 905	62.0	4,500 2 041	65.5	4,800 2 177	65.0	3,900 1 769	70.0	3,500 1 588	74.5	2,900 1 315	50 15.24
55 16.76	55.0	3,400 1 542	58.5	3,700 1 678	61.5	3,900 1 769	62.0	3,800 1 724	67.0	3,300 1 497	71.5	2,700 1 225	55 16.76
60 18.29	51.0	2,700 1 225	54.5	3,000 1 361	57.5	3,200 1 452	59.0	3,300 1 497	64.0	3,100 1 406	68.5	2,600 1 179	60 18.29
65 19.81	47.0	2,200 998	50.0	2,400 1 089	53.0	2,500 1 134	56.0	2,800 1 270	61.0	2,900 1 315	65.5	2,500 1 134	65 19.81
70 21.34	42.5	1,700 771	45.5	1,900 862	48.0	2,000 907	52.5	2,300 1 043	57.5	2,600 1 179	62.0	2,400 1 089	70 21.34
75 22.86	37.5	1,300 590	40.5	1,500 680	43.0	1,600 726	49.5	1,900 862	54.0	2,100 953	58.5	2,300 1 043	75 22.86
80 24.38	32.0	1,000 454	35.0	1,100 499	37.0	1,200 544	45.5	1,500 680	50.5	1,800 816	55.0	2,000 907	80 24.38
85 25.91							42.0	1,200 544	46.5	1,400 635	50.5	1,600 726	85 25.91
90 27.43							38.0	1,000 454	42.5	1,100 499	46.0	1,300 590	90 27.43
95 28.96											40.5	1,000 454	95 28.96
Minimum Boom Angle For No Load 32° Maximum Boom Length for 0° Boom Angle 57' (17.37m)							Minimum Boom Angle For No Load 38° Maximum Boom Length for 0° Boom Angle 53' (16.15m)						

28.75' - 70.25' (8.76m - 21.41m) 3-section boom - Outriggers Fully Retracted

Outriggers Retracted																
28.75' (8.76m) TO 70.25' (21.41m) Main Boom																
LOAD RADIUS (ft./m)	28.75' (8.76m)		35' (10.67m)		40' (12.19m)		46' (14.02m)		52' (15.85m)		58' (17.68m)		64' (19.51m)		70.25' (21.41m)	LOAD RADIUS (ft./m)
	LOADED BOOM ANGLE (Deg.)	360° (lbs./kgs)	LOADED BOOM ANGLE (Deg.)	360° (lbs./kgs)	LOADED BOOM ANGLE (Deg.)	360° (lbs./kgs)	LOADED BOOM ANGLE (Deg.)	360° (lbs./kgs)	LOADED BOOM ANGLE (Deg.)	360° (lbs./kgs)	LOADED BOOM ANGLE (Deg.)	360° (lbs./kgs)	LOADED BOOM ANGLE (Deg.)	360° (lbs./kgs)		
10 3.05	66.0	33,800 15 332	70.5	33,800 15 332	73.0	33,800 15 332	75.5	33,800 15 332	77.5	33,800 15 332					10 3.05	
12 3.66	61.5	24,200 10 977	67.0	24,200 10 977	70.0	24,200 10 977	73.0	24,200 10 977	75.5	24,200 10 977	77.0	24,200 10 977			12 3.66	
15 4.57	54.0	16,500 7 484	61.5	16,500 7 484	65.5	16,500 7 484	69.0	16,500 7 484	71.5	16,500 7 484	74.0	16,500 7 484	75.5	16,500 7 484	15 4.57	
20 6.10	40.5	10,100 4 581	51.5	10,100 4 581	57.0	10,100 4 581	62.0	10,100 4 581	65.5	10,100 4 581	68.5	10,100 4 581	71.0	10,100 4 581	20 6.10	
25 7.62	20.5	6,700 3 039	40.0	6,700 3 039	48.0	6,700 3 039	54.5	6,700 3 039	59.5	6,700 3 039	63.0	6,700 3 039	66.0	6,700 3 039	25 7.62	
30 9.14			24.0	4,800 2 177	37.5	4,800 2 177	46.5	4,800 2 177	52.5	4,800 2 177	57.0	4,800 2 177	61.0	4,800 2 177	30 9.14	
35 10.67					22.5	3,500 1 588	37.0	3,500 1 588	45.0	3,500 1 588	51.0	3,500 1 588	55.5	3,500 1 588	35 10.67	
40 12.19							24.5	2,600 1 179	36.5	2,600 1 179	44.5	2,600 1 179	50.0	2,600 1 179	40 12.19	
45 13.72									26.0	1,900 862	36.5	1,900 862	43.5	1,900 862	45 13.72	
50 15.24											27.0	1,300 590	36.5	1,300 590	50 15.24	
0° Angle Capacity		3,200 1 452		2,100 953		1,600 726		1,000 454	15.0	0	27.0	0	36.5	0	43.0	0
Minimum Boom Angle For No Load																

RTC-8028 Lifting Capacities

Refer to Operating Instructions page 9

28.75' - 70.25' (8.76m - 21.41m) 3-section boom - On Rubber Capacities

On Rubber Capacities with 20.5 x 25 Tires																	
Tire Pressure (0-1 mph) : 80 psi																	
Pick & Carry Capacities - Creep - Boom Centered over Front																	
3-Section Boom																	
LOAD RADIUS (ft./m)	Main Boom Length																
	28.75' (8.76m)		35' (10.67m)		40' (12.19m)		46' (14.02m)		52' (15.85m)		58' (17.68m)		64' (19.51m)		70.25' (21.41m)		LOAD RADIUS (ft./m)
	LOADED BOOM ANGLE (deg.)	OVER FRONT (lbs./kgs)	LOADED BOOM ANGLE (deg.)	OVER FRONT (lbs./kgs)	LOADED BOOM ANGLE (deg.)	OVER FRONT (lbs./kgs)	LOADED BOOM ANGLE (deg.)	OVER FRONT (lbs./kgs)	LOADED BOOM ANGLE (deg.)	OVER FRONT (lbs./kgs)	LOADED BOOM ANGLE (deg.)	OVER FRONT (lbs./kgs)	LOADED BOOM ANGLE (deg.)	OVER FRONT (lbs./kgs)			
10	66.0	35,400	70.5	35,400												10	
3.05		16 057		16 057												3.05	
12	61.5	30,700	67.0	30,700	70.5	30,700										12	
3.66		13 926		13 926		13 926										3.66	
15	54.5	25,400	61.5	25,400	66.0	25,400										15	
4.57		11 521		11 521		11 521										4.57	
20	40.5	19,300	52.0	19,300	57.5	19,300	62.5	19,300	66.5	19,300						20	
6.10		8 754		8 754		8 754		8 754		8 754						6.10	
25	20.5	15,200	40.0	15,200	48.5	15,200	55.0	15,200	60.0	15,200	64.0	15,200				25	
7.62		6 895		6 895		6 895		6 895		6 895		6 895				7.62	
30			24.5	11,600	37.5	11,600	47.0	11,600	53.5	11,600	58.0	11,600	62.0	11,600	65.0	11,600	30
9.14				5 262		5 262		5 262		5 262		5 262		5 262		5 262	9.14
35					23.0	8,900	37.5	8,900	46.0	8,900	52.0	8,900	56.5	8,900	60.5	8,900	35
10.67						4 037		4 037		4 037		4 037		4 037		4 037	10.67
40							25.0	7,100	37.5	7,100	45.0	7,100	51.0	7,100	55.5	7,100	40
12.19								3 221		3 221		3 221		3 221		3 221	12.19
45									26.5	5,700	37.5	5,700	44.5	5,700	50.0	5,700	45
13.72										2 586		2 586		2 586		2 586	13.72
50											27.5	4,700	37.5	4,700	44.5	4,700	50
15.24												2 132		2 132		2 132	15.24
55													28.5	3,800	37.5	3,800	55
16.76														1 724		1 724	16.76
60													16.0	3,100	30.0	3,100	60
18.29														1 406		1 406	18.29
65															19.5	2,600	65
19.81															1 179	1 179	19.81

Minimum Boom Angle For No Load 0°

On Rubber Capacities with 20.5 x 25 Tires																	
Tire Pressure: 80 psi																	
Stationary Capacities - 360°																	
3-Section Boom																	
LOAD RADIUS (ft./m)	Main Boom Length																
	28.75' (8.76m)		35' (10.67m)		40' (12.19m)		46' (14.02m)		52' (15.85m)		58' (17.68m)		64' (19.51m)		70.25' (21.41m)		LOAD RADIUS (ft./m)
	LOADED BOOM ANGLE (deg.)	360° (lbs./kgs)	LOADED BOOM ANGLE (deg.)	360° (lbs./kgs)	LOADED BOOM ANGLE (deg.)	360° (lbs./kgs)	LOADED BOOM ANGLE (deg.)	360° (lbs./kgs)	LOADED BOOM ANGLE (deg.)	360° (lbs./kgs)	LOADED BOOM ANGLE (deg.)	360° (lbs./kgs)	LOADED BOOM ANGLE (deg.)	360° (lbs./kgs)			
10	66.0	19,600	70.5	19,600	73.5	19,600										10	
3.05		8 891		8 891		8 891										3.05	
12	61.5	16,400	67.0	16,400	70.5	16,400	73.5	16,400								12	
3.66		7 439		7 439		7 439		7 439								3.66	
15	54.5	12,900	61.5	12,900	66.0	12,900	69.5	12,900	72.5	12,900						15	
4.57		5 851		5 851		5 851		5 851		5 851						4.57	
20	40.5	8,700	52.0	8,700	57.5	8,700	62.5	8,700	66.5	8,700	69.5	8,700				20	
6.10		3 946		3 946		3 946		3 946		3 946		3 946				6.10	
25	20.5	5,700	40.0	5,700	48.5	5,700	55.0	5,700	60.0	5,700	64.0	4,700	67.0	5,700	70.0	5,700	25
7.62		2 586		2 586		2 586		2 586		2 586		2 132		2 586		2 586	7.62
30			24.5	4,100	37.5	4,100	47.0	4,100	53.5	4,100	58.0	4,100	62.0	4,100	65.0	4,100	30
9.14				1 860		1 860		1 860		1 860		1 860		1 860		1 860	9.14
35					23.0	2,900	37.5	2,900	46.0	2,900	52.0	2,900	56.5	2,900	60.5	2,900	35
10.67						1 315		1 315		1 315		1 315		1 315		1 315	10.67
40							25.0	2,100	37.5	2,100	45.0	2,100	51.0	2,100	55.5	2,100	40
12.19								953		953		953		953		953	12.19
45									26.5	1,400	37.5	1,400	44.5	1,400	50.0	1,400	45
13.72										635		635		635		635	13.72
50											27.5	900	37.5	900	44.5	900	50
15.24												408		408		408	15.24
Min. Boom Angle For No Load	0		0		0		0		0		27.5		37.5		44.5		

RTC-8028 Lifting Capacities

Refer to Operating Instructions page 9

28.75' - 70.25' (8.76m - 21.41m) 3-section boom - On Rubber Capacities

On Rubber Capacities with 20.5 x 25 Tires																	
Tire Pressure (0-1 mph) : 80 psi																	
Stationary Capacities - Between Tracks Over Front																	
3-Section Boom																	
LOAD RADIUS (ft./m)	Main Boom Length														LOAD RADIUS (ft./m)		
	28.75' (8.76m)		35' (10.67m)		40' (12.19m)		46' (14.02m)		52' (15.85m)		58' (17.68m)		64' (19.51m)			70.25' (21.41m)	
	LOADED BOOM ANGLE (deg.)	OVER FRONT (lbs./kgs)	LOADED BOOM ANGLE (deg.)	OVER FRONT (lbs./kgs)	LOADED BOOM ANGLE (deg.)	OVER FRONT (lbs./kgs)	LOADED BOOM ANGLE (deg.)	OVER FRONT (lbs./kgs)	LOADED BOOM ANGLE (deg.)	OVER FRONT (lbs./kgs)	LOADED BOOM ANGLE (deg.)	OVER FRONT (lbs./kgs)	LOADED BOOM ANGLE (deg.)	OVER FRONT (lbs./kgs)		LOADED BOOM ANGLE (deg.)	OVER FRONT (lbs./kgs)
10	66.0	36,500	70.5	36,500	73.5	36,500										10	
3.05		16 556		16 556		16 556										3.05	
12	61.5	32,200	67.0	32,200	70.5	32,200	73.5	32,200								12	
3.66		14 606		14 606		14 606		14 606								3.66	
15	54.5	27,200	61.5	27,200	66.0	27,200	69.5	27,200	72.5	27,200						15	
4.57		12 338		12 338		12 338		12 338		12 338						4.57	
20	40.5	21,000	52.0	21,000	57.5	21,000	62.5	21,000	66.5	21,000	69.5	21,000				20	
6.10		9 526		9 526		9 526		9 526		9 526		9 526				6.10	
25	20.5	15,800	40.0	15,800	48.5	15,800	55.0	15,800	60.0	15,800	64.0	15,800	67.0	15,800	70.0	15,800	
7.62		7 167		7 167		7 167		7 167		7 167		7 167		7 167		7.62	
30			24.5	11,600	37.5	11,600	47.0	11,600	53.5	11,600	58.0	11,600	62.0	11,600	65.0	11,600	
9.14				5 262		5 262		5 262		5 262		5 262		5 262		5 262	
35					23.0	8,900	37.5	8,900	46.0	8,900	52.0	8,900	56.5	8,900	60.5	8,900	
10.67						4 037		4 037		4 037		4 037		4 037		4 037	
40							25.0	7,100	37.5	7,100	45.0	7,100	51.0	7,100	55.5	7,100	
12.19								3 221		3 221		3 221		3 221		3 221	
45									26.5	5,700	37.5	5,700	44.5	5,700	50.0	5,700	
13.72										2 586		2 586		2 586		2 586	
50											27.5	4,700	37.5	4,700	44.5	4,700	
15.24												2 132		2 132		2 132	
55													28.5	3,900	37.5	3,900	
16.76														1 724		1 724	
60													16.0	3,100	30.0	3,100	
18.29														1 406		1 406	
65															19.5	2,600	
19.81																1 179	

Minimum Boom Angle For No Load 0°

On Rubber Capacities with 23.5 x 25 Tires																	
Tire Pressure (0-1 mph) : 70 psi																	
Pick & Carry Capacities - Creep - Boom Centered Over Front																	
3-Section Boom																	
LOAD RADIUS (ft./m)	Main Boom Length														LOAD RADIUS (ft./m)		
	28.75' (8.76m)		35' (10.67m)		40' (12.19m)		46' (14.02m)		52' (15.85m)		58' (17.68m)		64' (19.51m)			70.25' (21.41m)	
	LOADED BOOM ANGLE (deg.)	OVER FRONT (lbs./kgs)	LOADED BOOM ANGLE (deg.)	OVER FRONT (lbs./kgs)	LOADED BOOM ANGLE (deg.)	OVER FRONT (lbs./kgs)	LOADED BOOM ANGLE (deg.)	OVER FRONT (lbs./kgs)	LOADED BOOM ANGLE (deg.)	OVER FRONT (lbs./kgs)	LOADED BOOM ANGLE (deg.)	OVER FRONT (lbs./kgs)	LOADED BOOM ANGLE (deg.)	OVER FRONT (lbs./kgs)		LOADED BOOM ANGLE (deg.)	OVER FRONT (lbs./kgs)
10	66.0	44,200														10	
3.05		20 049														3.05	
12	61.5	38,400	67.0	38,400												12	
3.66		17 418		17 418												3.66	
15	54.5	32,000	61.5	32,000	66.0	32,000										15	
4.57		14 515		14 515		14 515										4.57	
20	40.5	23,800	52.0	23,800	57.5	23,800	62.5	23,800								20	
6.10		10 796		10 796		10 796		10 796								6.10	
25	20.5	15,800	40.0	15,800	48.5	15,800	55.0	15,800	60.0	15,800	64.0	15,800				25	
7.62		7 167		7 167		7 167		7 167		7 167		7 167				7.62	
30			24.5	11,700	37.5	11,700	47.0	11,700	53.5	11,700	58.0	11,700	62.0	11,700	65.0	11,700	
9.14				5 307		5 307		5 307		5 307		5 307		5 307		5 307	
35					23.0	8,900	37.5	8,900	46.0	8,900	52.0	8,900	56.5	8,900	60.5	8,900	
10.67						4 037		4 037		4 037		4 037		4 037		4 037	
40							25.0	7,100	37.5	7,100	45.0	7,100	51.0	7,100	55.5	7,100	
12.19								3 221		3 221		3 221		3 221		3 221	
45									26.5	5,700	37.5	5,700	44.5	5,700	50.0	5,700	
13.72										2 586		2 586		2 586		2 586	
50											27.5	4,700	37.5	4,700	44.5	4,700	
15.24												2 132		2 132		2 132	
55													28.5	3,900	37.5	3,900	
16.76														1 769		1 769	
60													16.0	3,100	30.0	3,100	
18.29														1 406		1 406	
65															19.5	2,600	
19.81																1 179	

Minimum Boom Angle For No Load 0°

RTC-8028 Lifting Capacities

Refer to Operating Instructions page 9

28.75' - 70.25' (8.76m - 21.41m) 3-section boom - On Rubber Capacities

On Rubber Capacities with 23.5 x 25 Tires																	
Tire Pressure: 70 psi																	
Stationary Capacities - 360°																	
3-Section Boom																	
LOAD RADIUS (ft./m)	Main Boom Length															LOAD RADIUS (ft./m)	
	28.75' (8.76m)		35' (10.67m)		40' (12.19m)		46' (14.02m)		52' (15.85m)		58' (17.68m)		64' (19.51m)		70.25' (21.41m)		
	LOADED BOOM ANGLE (deg.)	360° (lbs./kgs)	LOADED BOOM ANGLE (deg.)	360° (lbs./kgs)	LOADED BOOM ANGLE (deg.)	360° (lbs./kgs)	LOADED BOOM ANGLE (deg.)	360° (lbs./kgs)	LOADED BOOM ANGLE (deg.)	360° (lbs./kgs)	LOADED BOOM ANGLE (deg.)	360° (lbs./kgs)	LOADED BOOM ANGLE (deg.)	360° (lbs./kgs)	LOADED BOOM ANGLE (deg.)		360° (lbs./kgs)
10	66.0	25,500	70.5	25,500	73.5	25,500											10
3.05		11 567		11 567		11 567											3.05
12	61.5	20,900	67.0	20,900	70.5	20,900	73.5	20,900									12
3.66		9 480		9 480		9 480		9 480									3.66
15	54.5	14,300	61.5	14,300	66.0	14,300	69.5	14,300	72.5	14,300							15
4.57		6 486		6 486		6 486		6 486		6 486							4.57
20	40.5	8,800	52.0	8,800	57.5	8,800	62.5	8,800	66.5	8,800	69.5	8,800					20
6.10		3 992		3 992		3 992		3 992		3 992		3 992					6.10
25	20.5	5,700	40.0	5,700	48.5	5,700	55.0	5,700	60.0	5,700	64.0	5,700	67.0	5,700	70.0	5,700	25
7.62		2 586		2 586		2 586		2 586		2 586		2 586		2 586		2 586	7.62
30			24.5	4,100	37.5	4,100	47.0	4,100	53.5	4,100	58.0	4,100	62.0	4,100	65.0	4,100	30
9.14				1 860		1 860		1 860		1 860		1 860		1 860		1 860	9.14
35					23.0	2,900	37.5	2,900	46.0	2,900	52.0	2,900	56.5	2,900	60.5	2,900	35
10.67						1 315		1 315		1 315		1 315		1 315		1 315	10.67
40							25.0	2,100	37.5	2,100	45.0	2,100	51.0	2,100	55.5	2,100	40
12.19								953		953		953		953		953	12.19
45									26.5	1,400	37.5	1,400	44.5	1,400	50.0	1,400	45
13.72										635		635		635		635	13.72
50											27.5	1,000	37.5	1,000	44.5	1,000	50
15.24												454		454		454	15.24
Min. Boom Angle For No Load	0		0		0		0		0		27.5		37.5		44.5		

On Rubber Capacities with 23.5 x 25 Tires																	
Tire Pressure (0-1 mph) : 70 psi																	
Stationary Capacities - Between Tracks Over Front																	
3-Section Boom																	
LOAD RADIUS (ft./m)	Main Boom Length															LOAD RADIUS (ft./m)	
	28.75' (8.76m)		35' (10.67m)		40' (12.19m)		46' (14.02m)		52' (15.85m)		58' (17.68m)		64' (19.51m)		70.25' (21.41m)		
	LOADED BOOM ANGLE (deg.)	OVER FRONT (lbs./kgs)	LOADED BOOM ANGLE (deg.)	OVER FRONT (lbs./kgs)	LOADED BOOM ANGLE (deg.)	OVER FRONT (lbs./kgs)	LOADED BOOM ANGLE (deg.)	OVER FRONT (lbs./kgs)	LOADED BOOM ANGLE (deg.)	OVER FRONT (lbs./kgs)	LOADED BOOM ANGLE (deg.)	OVER FRONT (lbs./kgs)	LOADED BOOM ANGLE (deg.)	OVER FRONT (lbs./kgs)	LOADED BOOM ANGLE (deg.)		OVER FRONT (lbs./kgs)
10	66.0	44,900	70.5	44,900	73.5	44,900											10
3.05		20 367		20 367		20 367											3.05
12	61.5	39,700	67.0	39,700	70.5	39,700	73.5	39,700									12
3.66		18 008		18 008		18 008		18 008									3.66
15	54.5	32,700	61.5	32,700	66.0	32,700	69.5	32,700	72.5	32,700							15
4.57		14 833		14 833		14 833		14 833		14 833							4.57
20	40.5	23,800	52.0	23,800	57.5	23,800	62.5	23,800	66.5	23,800	69.5	23,800					20
6.10		10 796		10 796		10 796		10 796		10 796		10 796					6.10
25	20.5	15,800	40.0	15,800	48.5	15,800	55.0	15,800	60.0	15,800	64.0	15,800	67.0	15,800	70.0	15,800	25
7.62		7 167		7 167		7 167		7 167		7 167		7 167		7 167		7 167	7.62
30			24.5	11,700	37.5	11,700	47.0	11,700	53.5	11,700	58.0	11,700	62.0	11,700	65.0	11,700	30
9.14				5 307		5 307		5 307		5 307		5 307		5 307		5 307	9.14
35					23.0	8,900	37.5	8,900	46.0	8,900	52.0	8,900	56.5	8,900	60.5	8,900	35
10.67						4 037		4 037		4 037		4 037		4 037		4 037	10.67
40							25.0	7,100	37.5	7,100	45.0	7,100	51.0	7,100	55.5	7,100	40
12.19								3 221		3 221		3 221		3 221		3 221	12.19
45									26.5	5,700	37.5	5,700	44.5	5,700	50.0	5,700	45
13.72										2 586		2 586		2 586		2 586	13.72
50											27.5	4,700	37.5	4,700	44.5	4,700	50
15.24												2 132		2 132		2 132	15.24
55													28.5	3,800	37.5	3,800	55
16.76														1 724		1 724	16.76
60													16.0	3,100	30.0	3,100	60
18.29														1 406		1 406	18.29
65															19.5	2,600	65
19.81																1 179	19.81
Minimum Boom Angle For No Load 0°																	

F 2 RTC-8028 3-section boom — Warning and Operating Instructions

GENERAL:

- Rated lifting capacities in pounds as shown on lift chart pertain to this machine as originally manufactured and normally equipped. Modifications to the machine or use of optional equipment other than that specified can result in a reduction of capacity.
- Construction equipment can be dangerous if improperly operated or maintained. Operation and maintenance of this machine must be in compliance with the information in the operator's, parts and safety manuals supplied with this machine. If these manuals are missing, order replacements through the distributor.
- The operator and other personnel associated with this machine shall fully acquaint themselves with the latest applicable American National Standards Institute (ANSI) safety standards for cranes.
- The maximum allowable lifting capacities are based on machine standing level on firm supporting surface.
- The crane capacities shown on fully extended outriggers do not exceed 85% of the tipping loads. The crane capacities shown on half extended outriggers, fully retracted outriggers or tires do not exceed 75% of the tipping loads as determined by SAE crane stability test code J-765A.
- The shaded crane capacities above the bold lines are based on structural strength or hydraulic limitations.
- Rated lifting capacities include the weight of hook block, slings, bucket, magnet and auxiliary lifting devices. Their weights must be subtracted from the listed rated load to obtain the net load to be lifted. See also deductions for auxiliary head, fixed fly, offset fly, 25-43 Ft. offset telescoping fly.
- Rated lifting capacities are based on freely suspended loads. No attempt shall be made to move a load horizontally on the ground in any direction.
- Rated lifting capacities are for lift crane service only.
- Do not operate at radii or boom lengths where capacities are not listed. At these positions, the machine can overturn without any load on the hook.
- The maximum loads which can be telescoped are not definable because of variation in loadings and crane maintenance, but it is permissible to attempt retraction and extension within the limits of the load rating chart.
- When either boom length or radius or both are between values listed, the smallest load shown at either the next larger radius or boom length shall be used.
- The user shall operate at reduced ratings to allow for adverse job conditions, such as: soft or uneven ground, out of level conditions, wind, side loads, pendulum action, jerking or sudden stopping of loads, hazardous conditions, experience of personnel, two machine lifts, traveling with loads, electrical wires, etc. Side load on boom or fly is extremely dangerous.
- When making lifts with auxiliary head machinery, the effective length of the boom increases by 2 feet.
- Power sections of boom must be extended equally.
- The least stable rated working area on outriggers is over the rear.
- Rated lifting capacities are based on correct reeving. Deduction must be made for excessive reeving. Any reeving over minimum required (see wire rope strength table) is considered excessive and must be accounted for. Use working range diagram to estimate the extra feet of rope then deduct 1 lb. for each foot of wire rope before attempting to lift a load.
- The loaded boom angle combined with the boom length give only an approximation of the operating radius. The boom angle, before loading, should be greater to account for deflection.
- For fly capacities with main boom length less than 70.25 ft. the rated loads are determined by the boom angle only in the fly capacity columns. For angles not shown use the next lower boom angle to determine the allowable capacity.
- The 28.75 ft. boom length capacities are based on boom fully retracted. If the boom is not fully retracted, do not exceed capacities shown for the 35 ft. boom length.
- Crane capacities on tires depend on tire capacity, condition of tires, and tire air pressure. On tire picks require lifting from main boom head only on a smooth and level surface. Pick and carry operations (creep) are restricted to a maximum speed of 1 MPH and not exceeding 200 ft. in a 30 minute period. The boom must be centered over the front of the machine with two position travel swing lock engaged and the load must be restrained from swinging. Lifts with manual extended or any fly erected on tires are prohibited. Tire inflation pressure for stationary and creep operations is 80 PSI for 20.5 x 25 tires and 70 PSI for 23.5 x 25 tires.

SET-UP

- The machine shall be leveled on a firm supporting surface. Depending on the nature of the supporting surface, it may be necessary to have structural supports under the outrigger floats or tires to spread the load to a larger bearing surface.
- When making lifts on outriggers, tires must be free of supporting surface. All outrigger beams must be extended to the same length; fully retracted, half extended, or fully extended.
- When making lifts on tires, they must be inflated to the recommended pressure. (See note 18).
- For required parts of line, see wire rope strength and winch performance tables.

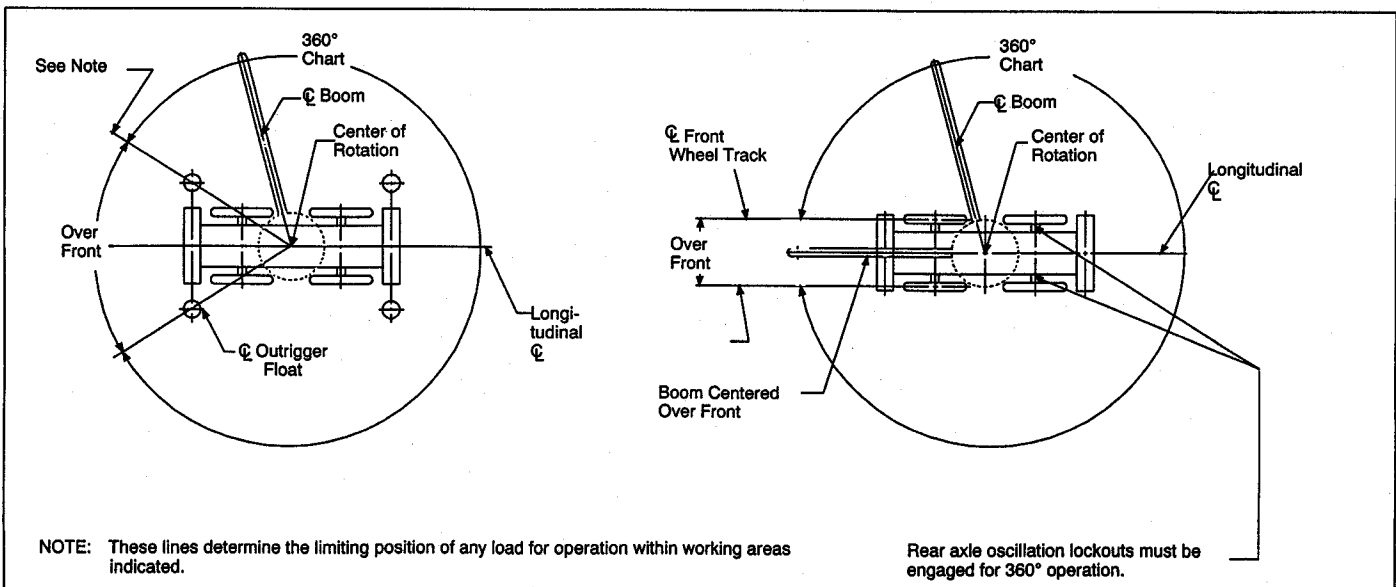
OPERATION:

- Rated lifting capacities at rated radius shall not be exceeded. Do not tip the machine to determine allowable loads. For concrete bucket operation, weight of bucket and load shall not exceed 80% of rated lifting capacities. For clamshell bucket operation, weight of bucket and bucket contents is restricted to a maximum weight of 5000 pounds or 80% of rated lifting capacity, whichever is less. For magnet operation, weight of magnet and load is restricted to a maximum weight of 5000 pounds or 80% of rated lifting capacity, whichever is less. For clamshell and magnet operation, maximum boom length is restricted to 46 feet and the boom angle is restricted to a minimum of 38 degrees. Lifts with any fly erected or manual extended are prohibited for both clam and magnet operation.

DEFINITIONS:

- Load Radius:** Horizontal distance from a projection of the axis of rotation to the supporting surface before loading to the center of the vertical hoist line or tackle with load applied.
- Loaded Boom Angle:** The angle between the boom base section and the horizontal after lifting the load at the rated radius.
- Working Area:** Area measured in a circular arc about the center line of rotation as shown on the working area plate.
- Freely Suspended Load:** Load hanging free with no direct external force applied except by the hoist line.
- Side Load:** Horizontal side force applied to the lifted load either on the ground or in the air.

RTC-8028 Working Areas



NOTE: These lines determine the limiting position of any load for operation within working areas indicated.

Rear axle oscillation lockouts must be engaged for 360° operation.