



FS121T/FS138T FALCON

The FALCON Series

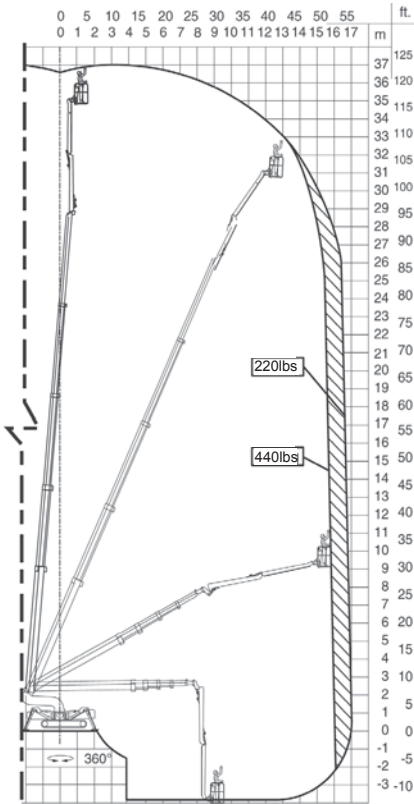
When you need considerable work height combined with limited or narrow access and maybe even surface pressure restrictions, nothing outperforms the new FALCON series. In a field dominated by traditional boom lifts, the FALCON series sets a new standard for compact, flexible and light aerial work platform design. The new design is not only elegant, but also makes it the most user-friendly and safe unit in its class.

- Available in 9 models from 85ft - 172 ft
- Most models available in wheel or track version
- Pass through a single or double door opening
- First and only compact lift with a double jib system
- Automatic outrigger setting (optional)
- Drive from basket (optional in wheel based lifts)
- Automatic, double safety and stability system
- Multi position outrigger system
- Set up on uneven surfaces
- Lightweight, detachable basket
- Self loads onto low bed trailer
- Customized trailer available upon request

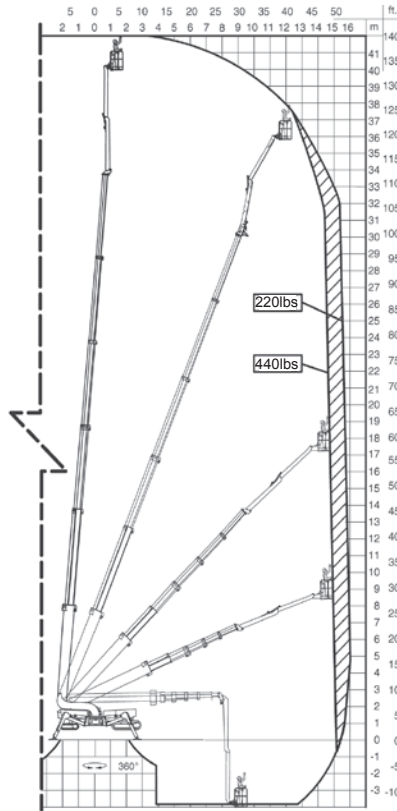
We reserve the right to alterations

| Model | FS121T | FS138T |
|--------------------------|-------------|-------------|
| Working height | 121ft | 138ft |
| Basket height | 115ft | 132ft |
| Max outreach | 53ft | 54ft |
| Jib arm (2x10ft) | 20ft | 20ft |
| Double jib arm | 200° | 200° |
| Basket load | 440lbs | 440lbs |
| Basket dims | 4'7" x 2'7" | 4'7" x 2'7" |
| Basket rotation (opt) | +/-90° | +/-90° |
| Turret rotation | 375° | 375° |
| Height | 6ft11in | 6ft11in |
| Length | 26ft7in | 27ft1in |
| Width | 4ft0in | 4ft0in |
| Gradability (standard) | 20°/37% | 20°/37% |
| Footprint (adjustable) | 18ft4in | 18ft4in |
| Weight (approx) | 17,600lbs | 18,040lbs |
| Max pressure, track | 101psi | 101psi |
| Max pressure, footplate | 43psi | 44psi |
| 4 battery pack | Standard | Standard |
| 24V DC motor | Standard | Standard |
| Lombardini diesel engine | Standard | Standard |

FS121T



FS138T



FS121T/FS138T FALCON

Standard Equipment

- Automatic stability & outreach control
- Chassis control from the basket
- Computer controlled (can-bus)
- Proportional control of all functions
- Self propelled
- Lombardini diesel engine (4 cyl)
- Battery powered with charger
- Double jib arm
- 375° non cont. turret rotation
- Individual setting of outriggers
- Elec. checking of the power system
- Manual pump for emergency lowering
- Self-load onto trucks and trailers
- Dual track system
- Front track section adjustable
- Variable width
- Min. width of only 4ft0in
- 2 person basket
- Space for tools etc in basket

Optional Equipment

- 180° (+/-90°) basket rotation
- 110V AC power to the basket
- Air/water to the basket
- Distance sensor on the basket
- Wind sensor on the basket
- Non marking belts
- Extra batteries
- Autosetting/leveling from basket
- Sliding boxes for outriggers
- Special color
- Height control switch
- Baskets in various sizes
- Slope alarm
- Main boom raised max 6ft while driving
- Portable control panel



We reserve the right to alterations