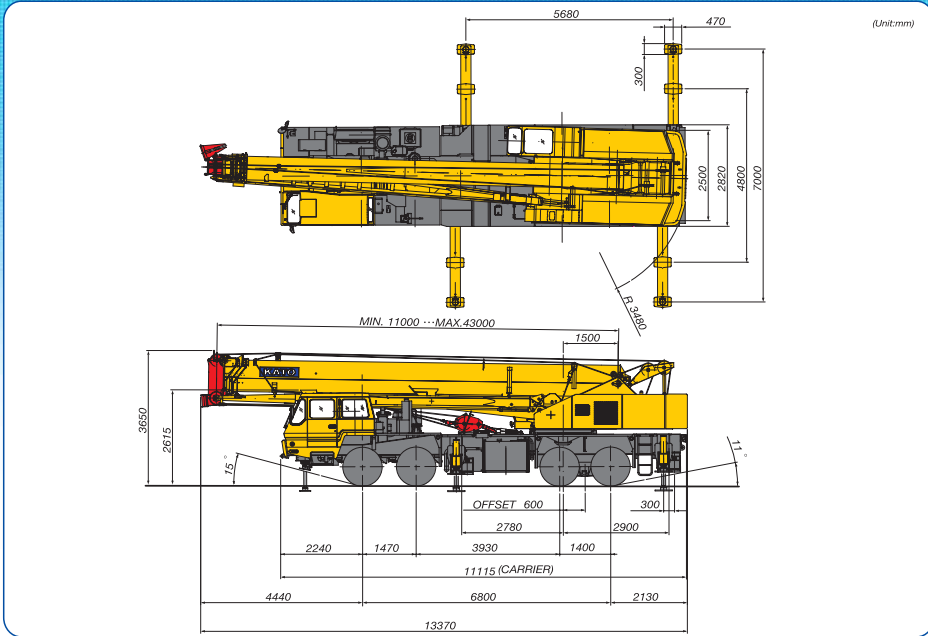
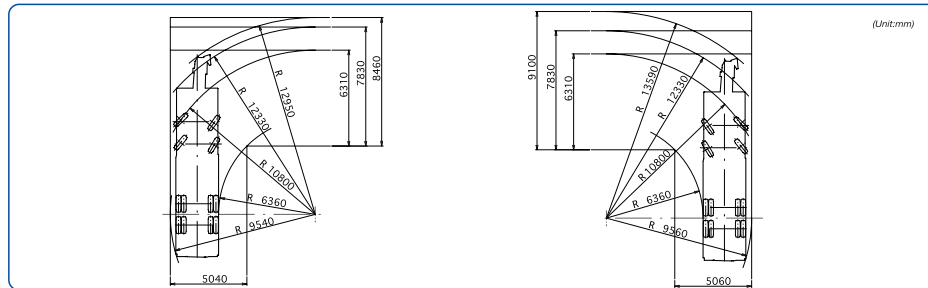


NK-550VR

Dimensions



Turning radius (left hand steering)



URL <http://www.kato-works.co.jp>

NOTE : Illustrations may include optional equipment, KATO products and specifications are subject to improvements and changes without notice.
 Before you use this crane, study the instruction manual thoroughly and follow the instructions it contains.
 Some differences may arise between the machine delivered and the photographs in the catalogue due to the country the crane will be used in or any added improvements.
 The specification may be changed without notice.
 The actual colours of the body and interior may appear slightly different from those shown in this catalogue due to the limitations of photography and printing.

Address inquiries to :



KATO KATO WORKS CO.,LTD.
 QUALITY & EXPERIENCE SINCE 1955

9-37, Higashi-ohi 1-chome, Shinagawa-ku, Tokyo 140-0011, Japan.
 Tel. : Head Office Tokyo(03)3458-1111
 Overseas Marketing Department Tokyo(03)3458-1115
 Fax. : Tokyo(03)3458-1163

CO1941
 9,2004-3000(TG)1 Printed in Japan



SUPERBOOM

NK-550VR

FULLY HYDRAULIC TRUCK CRANE



KATO

More Height and More Working Ranges with 43m Solid **SUPERBOOM**



Advanced “**SUPERBOOM**”

- Max. boom length 43 m
- Fly jib length 9.2 m & 15 m
- Max lifting height 43 m (boom)
58 m (boom + fly jib)

Wide working ranges in narrows spaces

- Max. derricking angle 81°
- Fly jib with 3 offset angles 5°, 25°, 45°
- Small tail slewing radius 3.48 m

Wide & roomy operator’s cabin

- Operating lever system ISO Type
- Safe load indicator ACS COMPULOAD
with working range
limiting function

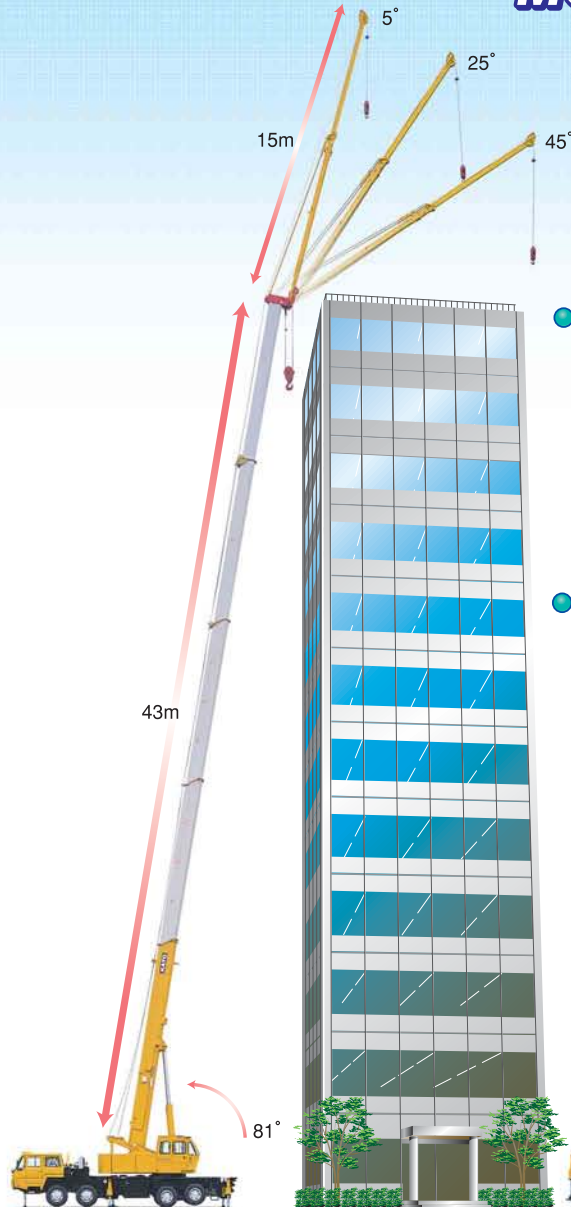
Compact body with better mobility

- Overall length 13.37 m
- Overall height 3.65 m
- Min. turning radius 10.80 m

New model engine

- Conformity regulation Euro II Engine
- Max. output 257 kw
- Max. torque 1,460 Nm

**MORE CLOSER!
MORE HIGHER!
MORE FARTHER!**

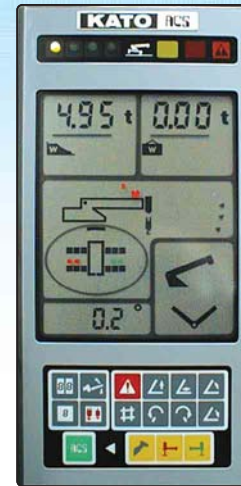


● Newly designed solid 43m **SUPERBOOM** combined with 15m fly jib offers you steady operation and wider range capacity in narrow spaces.

● Fly jib is stored under the boom while traveling and set up easily & speedily even in narrow spaces at job site.



Wide & roomy operator's cabin for the safe work



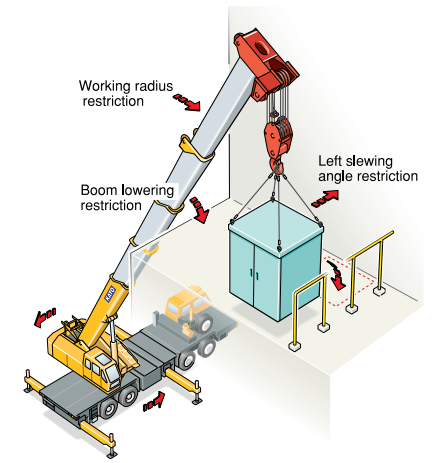
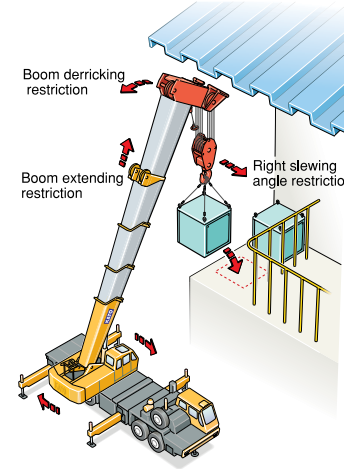
• Display for reference only.



(With freefall pedal)

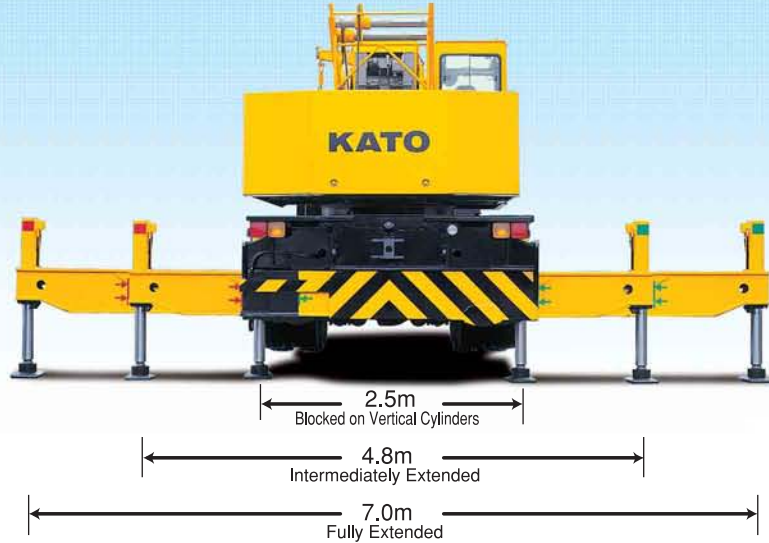
Safe load indicator “ACS COMPULOAD” with working range limiting function

● Working range limiting function ensures safe operation in a confined and limited job site with control of 6 factors: boom extending, boom derricking, boom lowering, working radius, left slewing angle, right slewing angle.



Slewing does not stop automatically, sound alarm only.

Three-position outrigger setting offers variations of machine-setting in the limited space



Easy accessibility with large steps and full-sized fenders



Safety Devices

- ACS (Automatic Crane Stopper)
- Winch hoisting limiter
- Winch drum turning indicator
- Irregular winding prevention device
- Outrigger lock device
- Boom falling prevention device
- Winch drum lock device
- Automatic winch brake
- Hydraulic safety valve
- Slewing lock device

Standard equipment

For crane

- Front jack
- Fly jib
- Rooster sheave
- Independent two winches control system
- Irregular winding prevention device
- Winch automatic brake
- Free fall device
- Control pedals for main winch & auxiliary winch
- Sub hook sheave for 55t
- Hooks (40 ton, 20 ton, 4 ton)
- Hydraulic oil cooler
- Full size fender
- Large size steps
- 3 working lights
- Moment limiter with voice alarm (English)
- Winch drum turning indicator
- Sun visor
- Cigar lighter
- Ashtray
- Cab floor mat
- Tool kit

For carrier

- Towing hooks (front and rear, eye type)
- Spare tire & wheel
- Air dryer
- Cab heater
- Radio AM
- Cigar lighter
- Ashtray

Optional equipment

For crane

- Winch over-unwinding device
- Winch drum mirror (hoist mirror)
- Yellow rev. light
- Cab heater
- Cab cooler
- Fan
- Radio AM FM
- Fire extinguisher

For carrier

- Cab cooler
- Radio AM FM

NOTE : Performance and specifications are based on the condition fitted with all standard equipment.