

Data subject to be changed without any further notice.

VALLA 400 DE Electric and Diesel Mobile Crane Max. Capacity **Lbs. 88,000**



Valla	
OUTREACH (Ft)	CAPACITY (Lbs.)
6	88,000
18	24,000
29	14,000

TECHNICAL DATA

DIESEL OPERATION	ELECTRIC OPERATION
ENGINE: 8 cylinder 134Kw, 182 HP.	Motor: 28,5 kW – 96V DC with electronic control
Transmission: automatic torque converter – 6 gears forward + 3 gear reverse; max speed up to 40 km/h – hydraulic pumps PTO.	Transmission: gear box – speed up to 6 k/h Battery: 96V – 850 Ah Battery charger: on board
Electric system: 24V – road lights	Electric pump: 96 V -18,5 kW

HYDRAULIC SYSTEM: proportional control valves, filters, safety valves.

AXLES: 1 steer oscillating + 1 driving rigid.

STEERING: reversible (on the road front steering wheels, on the job rear steering whels) – hydraulic power steering.

TYRES: 14.00 – 24 – 4 on drive axle + 2 on steering axle.

FRAME: fabricated from preformed and welded steel plate.

BOOM: fabricated from preformed and welded steel plate – with 3 hydraulic sections, entirely automatic – nylon pads.

WINCH: hydraulic.

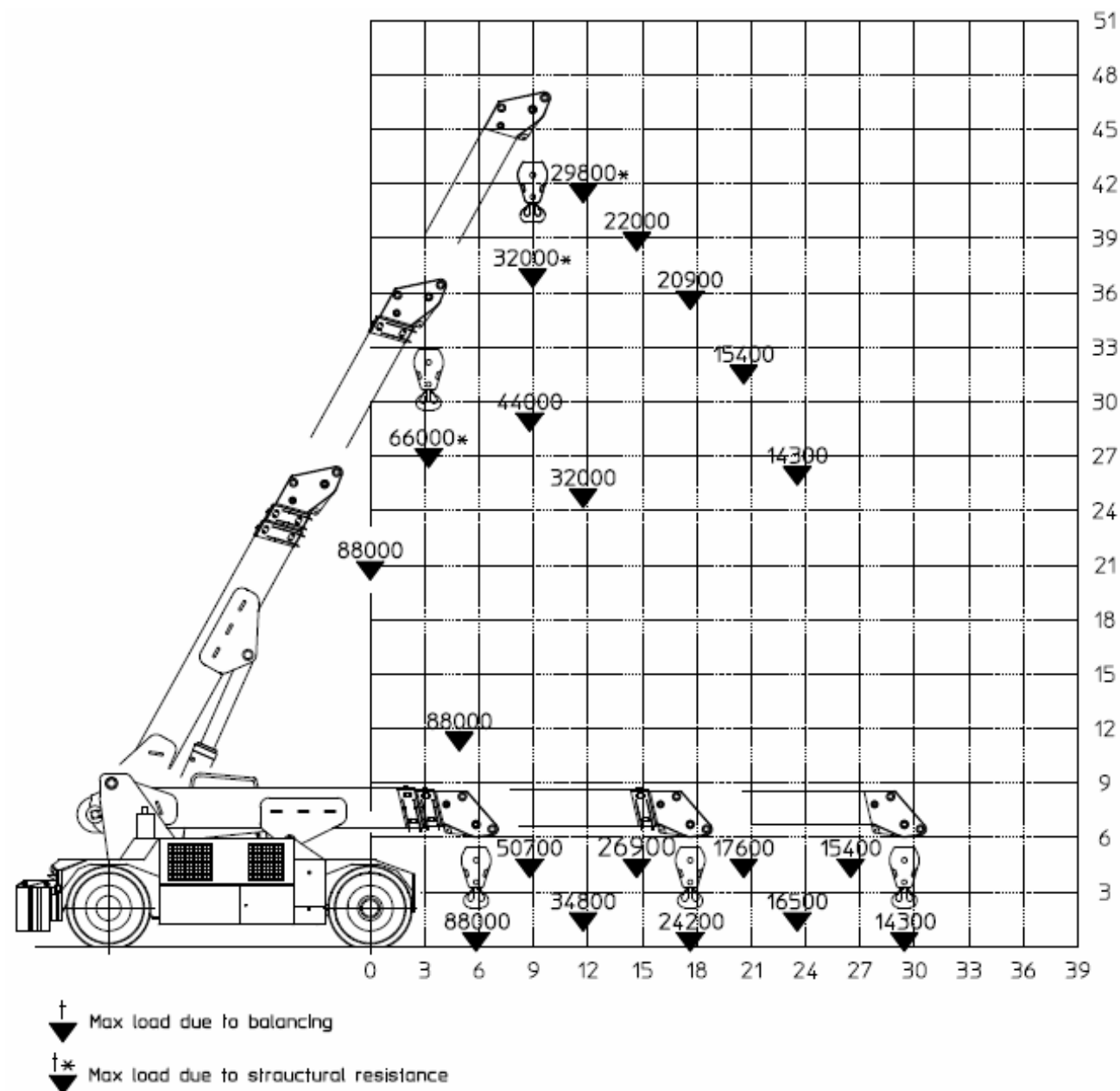
CAB: automotive type – (optional:swivelling cab)

LMI: electronic Load Moment Indicator. Display showing lifted load, max allowed load, tilting percentage, operating radius, angle, telescope and light indicators on the operative mode.

TOTAL WEIGHT: Lbs. 72,000 (Lbs. 52,800 without counterweight)
MAX. CAPACITY: Lbs. 88,000

Options on request: manual and hydraulic jibs; cable remote control; radio remote control; man bucket and relevant certification as aerial platform; non marking tires; full set of road lights.





Lbs./ft

