

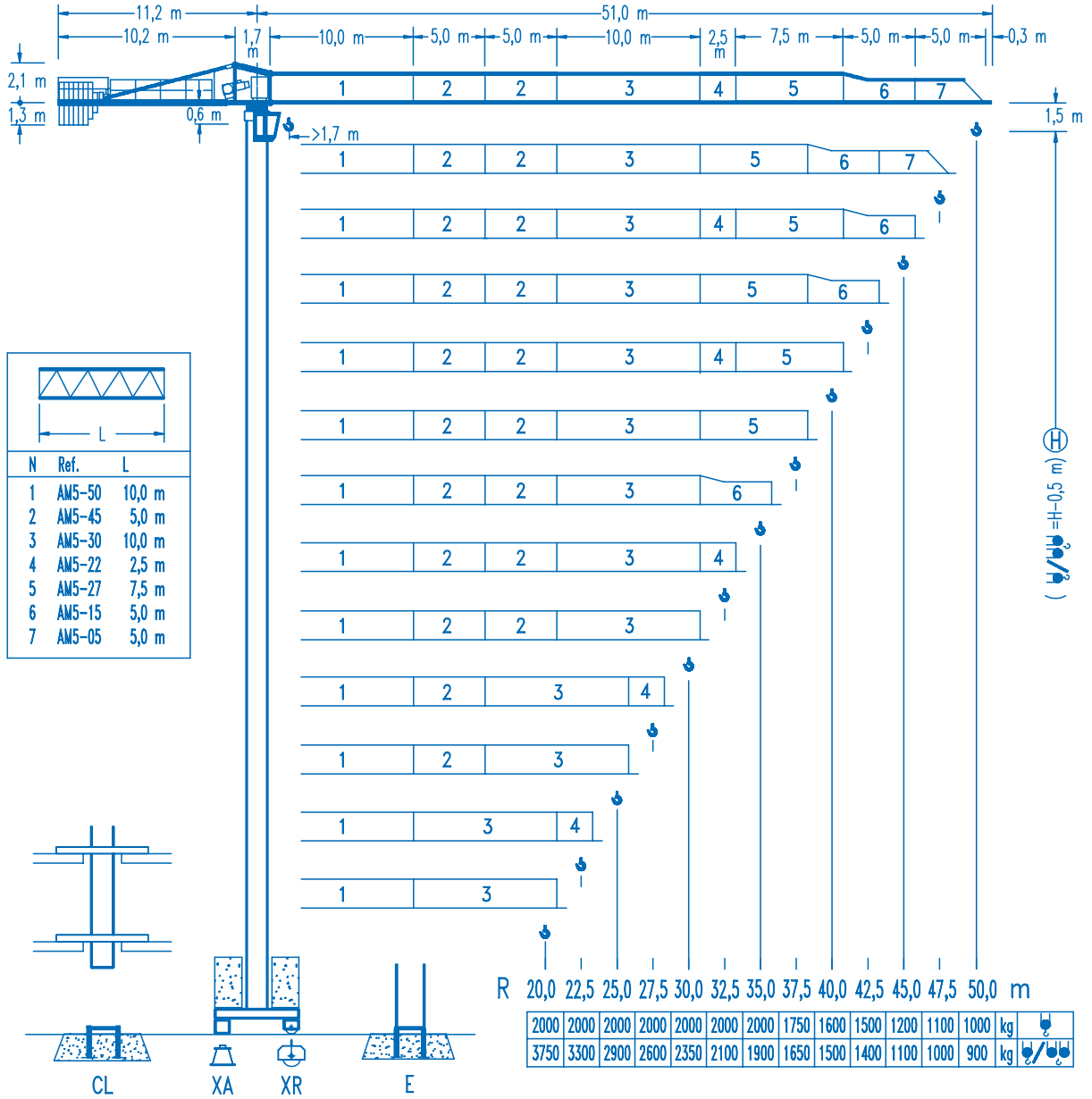


COMANSA

LINDEN 500

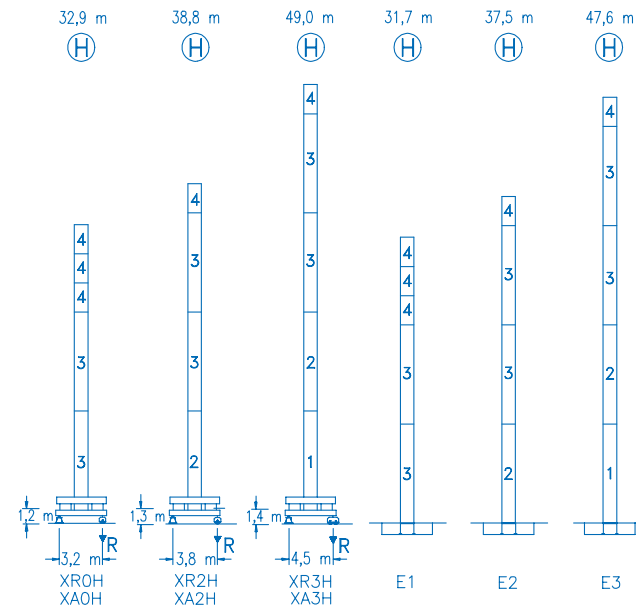
5 LC 5010

4 t



CE
DIN 15018 H1 B3

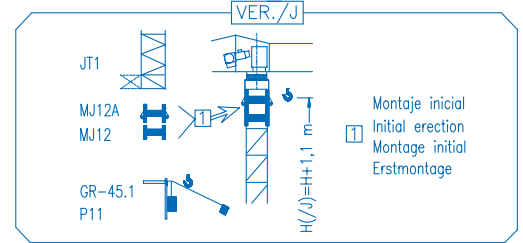
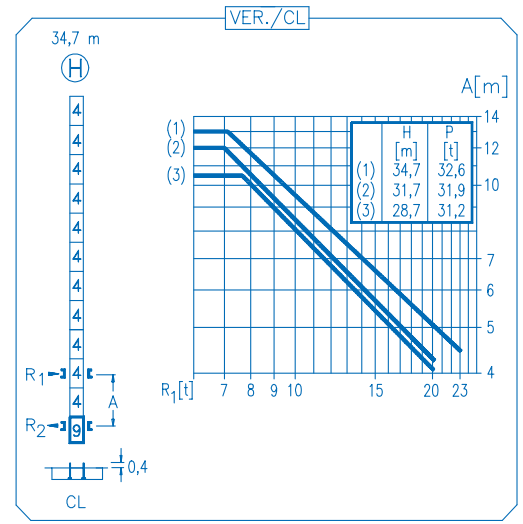
R	R(Cmax)	Cmax	20,0	22,5	25,0	27,5	30,0	32,5	35,0	37,5	40,0	42,5	45,0	47,5	50,0	m	kg
50,0	27,8 m	2000	2000	2000	2000	2000	1830	1670	1530	1410	1310	1220	1140	1070	1000	20,0	1000
	14,9 m	4000	2850	2480	2190	1950	1760	1590	1450	1330	1220	1120	1040	970	900		
47,5	28,5 m	2000	2000	2000	2000	2000	1890	1720	1580	1460	1350	1260	1170	1100	22,5	1000	
	15,3 m	4000	2930	2550	2250	2010	1810	1640	1490	1370	1260	1160	1080	1000			
45,0	29,0 m	2000	2000	2000	2000	2000	1930	1760	1610	1490	1380	1280	1200	25,0	1000		
	15,5 m	4000	2980	2600	2300	2050	1840	1670	1520	1400	1280	1190	1100				
42,5	33,1 m	2000	2000	2000	2000	2000	2000	1880	1730	1610	1500	27,5	1000				
	17,5 m	4000	3450	3010	2660	2380	2150	1950	1780	1640	1510			1400			
40,0	32,9 m	2000	2000	2000	2000	2000	2000	1860	1720	1600	30,0	1000					
	17,4 m	4000	3420	2990	2640	2370	2130	1940	1770	1630			1500				
37,5	33,4 m	2000	2000	2000	2000	2000	2000	1890	1750	32,5	1000						
	17,6 m	4000	3470	3030	2680	2400	2160	1970	1800			1650					
35,0	35,0 m	2000	2000	2000	2000	2000	2000	1900	35,0	1000							
	18,5 m	4000	3650	3190	2830	2530	2280	2080			1900						
32,5	32,5 m	2000	2000	2000	2000	2000	2000	2000	37,5	1000							
	18,6 m	4000	3690	3230	2860	2560	2310	2100									
30,0	30,0 m	2000	2000	2000	2000	2000	2000	40,0	1000								
	18,9 m	4000	3750	3280	2910	2600	2350										



N	Ref.	h
1	MT123	10,1 m
2	MH124A	11,8 m
3	MH124-1	11,8 m
4	MH121	3,0 m
9	CL20	2,2 m

MH124=(4)MH121-0,2 m

H=H+0,2 m
 H=H
 H=H
 H=H-0,2 m



R. máx.	En servicio	XR0H 43,2 t
	In operation	
	En service	
	In Betrieb	
	XR2H 42,4 t	
	XR3H 48,2 t	

R. máx.	Fuera de servicio	XR0H 48,4 t
	Out of service	
	Hors service	
	Ausser Betrieb	
	XR2H 57,2 t	
	XR3H 77,9 t	

CS2-1.9

1,9 kW

16 m/min
48 m/min

CFU-2.2

2,2 kW

0 ⇄ 80 m/min

GR-9.0

90 Nm

0 ⇄ 0,8 rpm

TS2-3.0	TS2-4.5	TS2-5.5
2x30 Nm	2x45 Nm	2x55 Nm
0 ⇄ 20 m/min		
XR0H	XR2H	XR3H

ES3-13-10

13,2 kW

	I	II	III
m/min	7,5	30	60
kg	2000	2000	1100
m/min	3,7	15	30
kg	4000	4000	2200

ES3-18-10

18 kW

	I	II	III
m/min	10	38	76
kg	2000	2000	1100
m/min	5	19	38
kg	4000	4000	2200

EFU2-11-10

11 kW

EFU2-18-10

18 kW

Tensión de alimentación	400 V
Operating voltage	3 ph
Tension de service	50 Hz
Betriebsspannung	

Opcional	*
Optional	
En option	
Kaufoption	