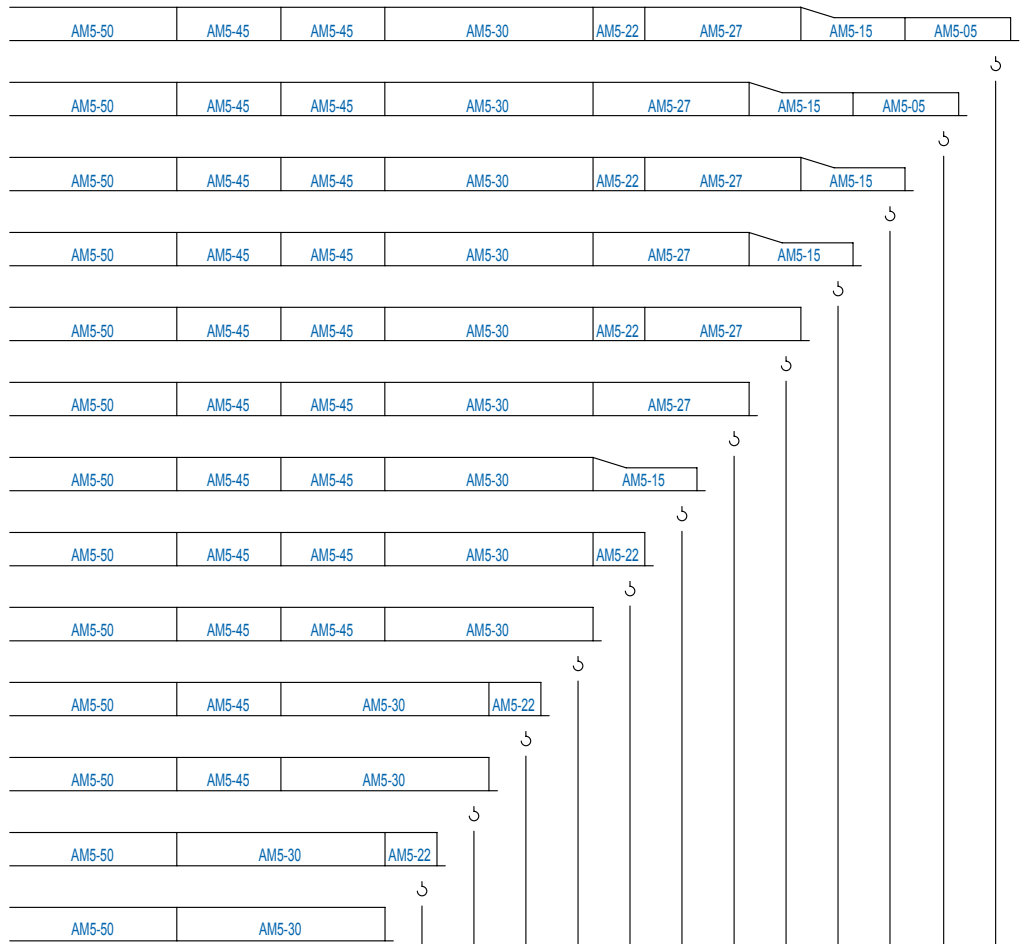
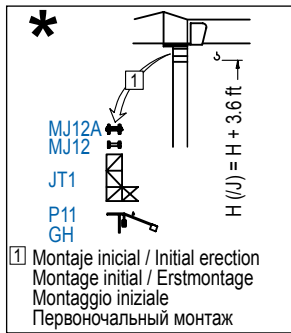
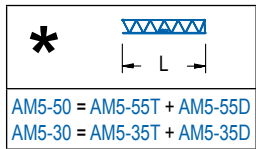
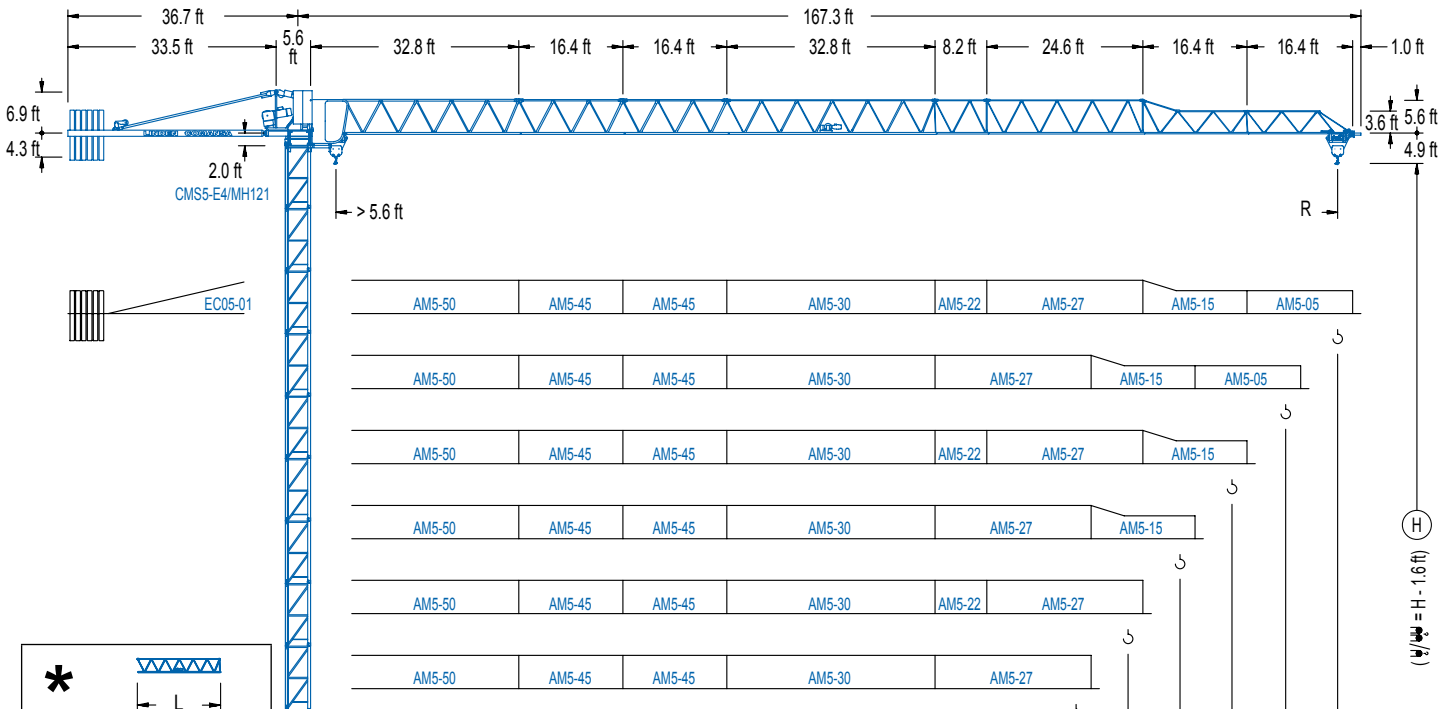


LC 500

5 LC 5010

8,820 lb



R	65.6	73.8	82.0	90.2	98.4	106.6	114.8	123.0	131.2	139.4	147.6	155.8	164.0	ft
PowerLift	4,410	4,410	4,410	4,410	4,410	4,410	4,410	4,410	4,410	4,410	4,410	4,410	4,410	lb
PowerLift	8,820	8,270	7,030	6,310	5,690	5,090	4,610	3,990	3,640	3,400	2,670	2,430	2,180	lb
	4,410	4,410	4,410	4,410	4,410	4,410	4,410	4,230	3,880	3,640	2,910	2,670	2,430	lb

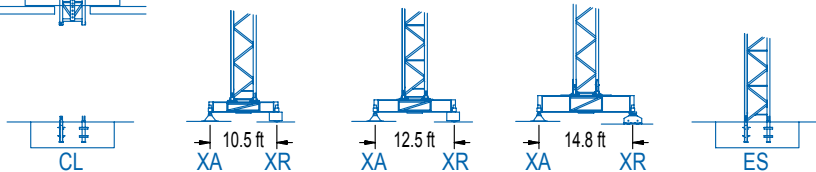
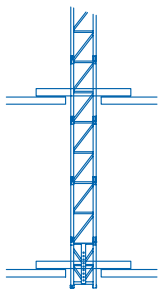
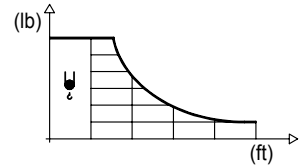


DIAGRAMA DE CARGAS

Load chart / Diagramme de charges / Lastdiagramm / Diagramma di carico / Диаграмма распределения нагрузки

R (ft)	ψ	RCmax (ft)	41.0	49.2	57.4	65.6	73.8	82.0	90.2	98.4	106.6	114.8	123.0	131.2	139.4	147.6	155.8	164.0	↔ (ft) ↓ (lb)
164.0	91.2								4,410	4,030	3,680	3,370	3,110	2,890	2,690	2,510	2,340	2,200	
155.8	93.5								4,410	4,170	3,790	3,480	3,220	2,980	2,780	2,580	2,430		
147.6	95.1								4,410	4,250	3,880	3,550	3,280	3,040	2,820	2,650			
139.4	108.6										4,410	4,140	3,810	3,550	3,310				
131.2	107.9										4,410	4,100	3,790	3,530					
123.0	109.6										4,410	4,170	3,860						
114.8	114.8											4,410							
106.6	106.6												4,410						
98.4	98.4									4,410									
90.2	90.2								4,410										
82.0	82.0							4,410											
73.8	73.8					4,410													
65.6	65.6				4,410														



R (ft)	ψ/ψ	RCmax (ft)	41.0	49.2	57.4	65.6	73.8	82.0	90.2	98.4	106.6	114.8	123.0	131.2	139.4	147.6	155.8	164.0	↔ (ft) ↓ (lb)
164.0	48.9	8,820	8,820	8,750	7,340	6,280	5,470	4,830	4,300	3,880	3,510	3,200	2,930	2,690	2,470	2,290	2,140	1,980	
155.8	50.2	8,820	8,820	7,540	6,460	5,620	4,980	4,430	3,990	3,620	3,280	3,020	2,780	2,560	2,380	2,200			
147.6	50.9	8,820	8,820	7,670	6,570	5,730	5,070	4,520	4,060	3,680	3,350	3,090	2,820	2,620	2,430				
139.4	57.4			8,820	7,610	6,640	5,860	5,250	4,740	4,300	3,920	3,620	3,330	3,090					
131.2	57.1	8,820	8,770	7,540	6,590	5,820	5,200	4,700	4,280	3,900	3,590	3,310							
123.0	57.7			8,820	7,650	6,680	5,910	5,290	4,760	4,320	3,970	3,640							
114.8	60.7			8,820	8,050	7,030	6,240	5,580	5,030	4,590	4,190								
106.6	61.0			8,820	8,130	7,120	6,310	5,640	5,090	4,630									
98.4	62.0			8,820	8,270	7,230	6,420	5,730	5,180										
90.2	62.0			8,820	8,270	7,230	6,390	5,730											
82.0	62.0			8,820	8,250	7,210	6,390												
73.8	62.3			8,820	8,310	7,280													
65.6	62.0			8,820	8,270														

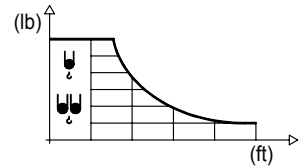
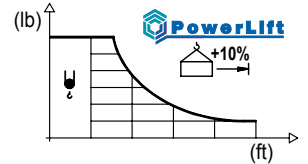


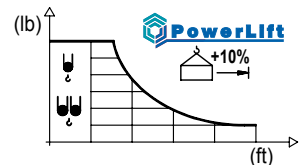
DIAGRAMA DE CARGAS POWERLIFT

Load chart PowerLift / Diagramme de charges PowerLift / Lastdiagramm PowerLift / Diagramma di carico PowerLift / Диаграмма распределения нагрузки PowerLift

R (ft)	ψ	RCmax (ft)	41.0	49.2	57.4	65.6	73.8	82.0	90.2	98.4	106.6	114.8	123.0	131.2	139.4	147.6	155.8	164.0	↔ (ft) ↓ (lb)
164.0	98.4									4,410	4,030	3,700	3,420	3,170	2,950	2,760	2,580	2,430	
155.8	101.4									4,410	4,140	3,810	3,530	3,260	3,040	2,840	2,670		
147.6	103.0									4,410	4,230	3,900	3,590	3,350	3,110	2,910			
139.4	117.8											4,410	4,190	3,900	3,640				
131.2	117.5											4,410	4,190	3,880					
123.0	118.8											4,410	4,230						
114.8	114.8												4,410						
106.6	106.6													4,410					
98.4	98.4																		
90.2	90.2								4,410										
82.0	82.0							4,410											
73.8	73.8					4,410													
65.6	65.6				4,410														



R (ft)	ψ/ψ	RCmax (ft)	41.0	49.2	57.4	65.6	73.8	82.0	90.2	98.4	106.6	114.8	123.0	131.2	139.4	147.6	155.8	164.0	↔ (ft) ↓ (lb)
164.0	52.2	8,820	8,820	7,910	6,790	5,930	5,220	4,670	4,210	3,810	3,480	3,200	2,930	2,710	2,510	2,340	2,180		
155.8	53.5	8,820	8,820	8,160	6,990	6,110	5,400	4,830	4,340	3,950	3,590	3,310	3,040	2,800	2,600	2,430			
147.6	54.5	8,820	8,820	7,740	6,220	5,510	4,920	4,430	4,010	3,680	3,370	3,110	2,870	2,670					
139.4	62.0			8,820	8,270	7,230	6,390	5,730	5,180	4,720	4,300	3,970	3,660	3,400					
131.2	61.7			8,820	8,220	7,190	6,370	5,690	5,140	4,670	4,280	3,950	3,640						
123.0	62.3			8,820	8,310	7,280	6,440	5,780	5,200	4,740	4,340	3,990							
114.8	65.6			8,820	8,800	7,690	6,830	6,110	5,530	5,030	4,610								
106.6	66.3			8,820	8,820	7,780	6,900	6,190	5,600	5,090									
98.4	67.3			8,820	8,820	7,910	7,010	6,280	5,690										
90.2	67.3			8,820	8,820	7,940	7,030	6,310											
82.0	67.3			8,820	8,820	7,940	7,030												
73.8	67.9			8,820	8,820	8,000													
65.6	65.6			8,820	8,820														



MECANISMOS

Mechanisms / Mécanismes / Antriebe / Meccanismi / Механизмы

ES3-13-10
740 ft
21 hp

	I	II	III
ft/min	30	118	236
lb	4,410	4,410	2,425

	I	II	III
ft/min	15	59	118
lb	8,820	8,820	4,850

ES3-18-10
820 ft
29 hp

	I	II	III
ft/min	39	150	299
lb	4,410	4,410	2,425

	I	II	III
ft/min	20	75	150
lb	8,820	8,820	4,850

EFU2-11-10
740 ft
15 hp

ft/min	lb
98	4,410
131	3,310
197	2,200
243	1,760

ft/min	lb
49	8,820
66	6,610
99	4,410
121	3,530

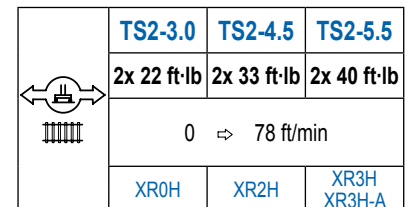
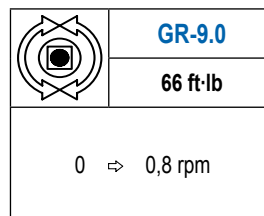
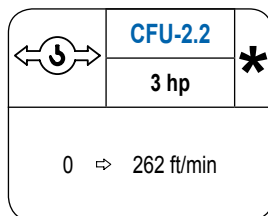
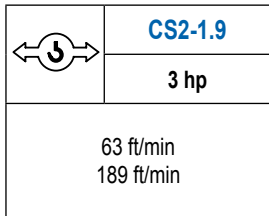
EFU2-18-10
820 ft
24 hp

ft/min	lb
177	4,410
197	3,310
230	2,200
262	1,760
302	1,760

ft/min	lb
88	8,820
115	6,610
131	4,410
151	3,530

MECANISMOS

Mechanisms / Mécanismes / Antriebe / Meccanismi / Механизмы



POTENCIA / POWER / PUISSANCE / LEISTUNG / POTENZA / МОЩНОСТЬ				Tensión de alimentación / Operating voltage / Tension de service / Betriebsspannung / Tensione di alimentazione / Напряжение источника питания	Generador / Generator / Générateur / Generator / Generatore / Генератор
Elevación / Hoist / Levage / Hub / Sollevamento / Тип механизма (подъем)	Carro / Trolley / Chariot / Laufkatze / Carrello / Грузовая тележка	Giro / Slewing / Rotation / Drehbewegung / Rotazione / Поворот	Traslación / Travel / Translation / Verfahrbewegung / Traslazione / Ход	480 V 3ph 60 Hz	90 kVA 107 kVA 48 kVA 60 kVA
ES3-13-10	CS2-1.9	GR-9.0	(2x) TS2-3.0		
ES3-18-10			(2x) TS2-4.5		
EFU2-11-10	CFU-2.2	GR-9.0	(2x) TS2-5.5		
EFU2-18-10					

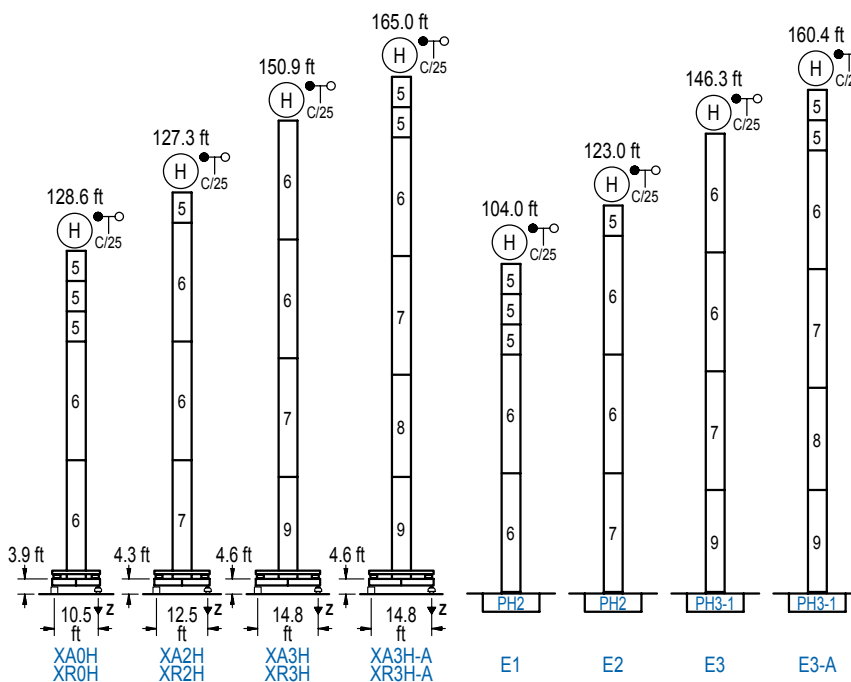
Opcional /
Optional / En
option / Kaufoption
/ Opzionale /
Опционально

*

ALTURAS BAJO GANCHO

Heights under hook / Hauteurs sous crochet / Hakenhöhen / Altezza sotto gancio / Высота под крюком

∅ 3.9 ft



n°	Ref.	∅	h
5	MH121	3.9	9.8
6	MH124-1	3.9	38.7
7	MH124A	3.9	38.7
8	MT123A	3.9	33.1
9	MT123	3.9	33.1

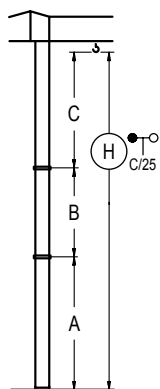
MH124-1 = 4x MH121 - 0.7 ft

H = H + 0.7 ft
 H = H
 H = H
 H = H - 0.7 ft

Z máx.	En servicio / In operation / En service / In Betrieb / In servizio / При работе	XR0H..... 95 kip XR2H..... 93 kip XR3H..... 95 kip XR3H-A... 106 kip
	Fuera de servicio / Out of service / Hors service / Ausser Betrieb / Fuori servizio / В стационарном состоянии	XR0H..... 93 kip XR2H..... 108 kip XR3H..... 141 kip XR3H-A... 168 kip

GRÚA ARRIOSTRADA

Braced crane / Grue à entretoisement / Abgespannter Kran / Gru ancorata / Нарастиваемый кран

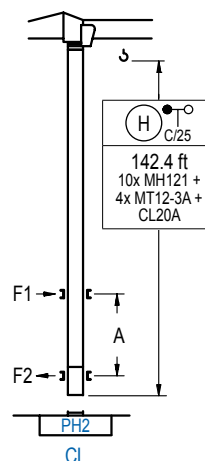


	XA0H	XA2H	XA3H	XA3H-A
A max	91.2	111.2	134.8	148.3
B max	- 68.9	- 68.9	- 68.9	- 68.9
C max	89.2	89.2	89.2	89.2
H max	180.4	249.3	200.5	269.4
	224.1	1293.0	237.5	306.4

	E1	E2	E3	E3-A
A max	87.3	107.0	130.2	143.7
B max	- 68.9	- 68.9	- 68.9	- 68.9
C max	89.2	89.2	89.2	89.2
H max	176.5	245.4	196.2	265.1
	219.5	288.4	232.9	301.8

GRÚA TREPADORA

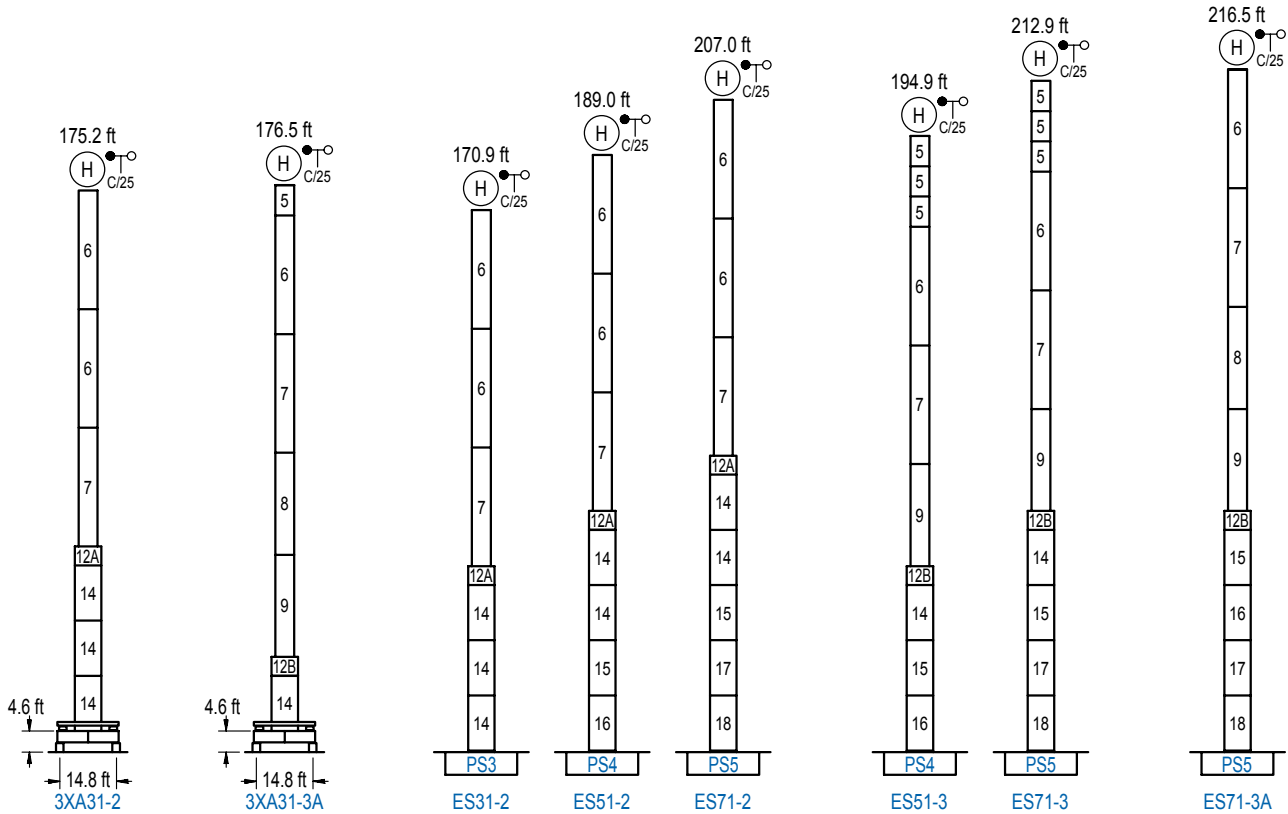
Internal climbing crane / Grue avec cage de télescopage intérieure / Kran mit klettern im Gebäude / Gru in rampante in cavedio / Монтажная келья



n°	Ref.	∅	h
5	MH121	3.9	9.8
10	MT12-3A	3.9	9.5
11	CL20A	3.9	8.5

Otras zonas de viento, alturas superiores, arriostramientos o trepado interno consultar / Other wind zones, additional hook heights, tie frames or internal climbing on request / Autres zones de vent, des hauteurs supplémentaires, entretoisements ou grues avec cage de télescopage intérieure, sur demande / Andere Windzonen, weitere Hakenhöhen, Abspannungen zum Gebäude oder Klettern im Gebäude auf Anfrage / Per zone con velocità del vento particolari, altezze superiori, ancoraggi o rampante in cavedio, consultare il fabbricante / При других ветренных зонах, при большой высоте, привязках к зданию или наращивании крана внутри здания проконсультируйтесь с нами

LC 500



n°	Ref.	∅	h	n°	Ref.	∅	h	n°	Ref.	∅	h
5	MH121	3.9	9.8	12A	TMS13/PMH12	5.2	3.3	14	S13	5.2	18.0
6	MH124-1	3.9	38.7	12B	TMS13/PMH13	5.2	3.3	15	TS14	5.2	18.0
7	MH124A	3.9	38.7					16	S14	5.2	18.0
8	MT123A	3.9	33.1					17	TS15	5.2	18.0
9	MT123	3.9	33.1					18	S15	5.2	18.0
MH124-1 = 4x MH121 - 0.7 ft											

Otras zonas de viento o alturas superiores consultar / Other wind zones or additional hook heights on request / Autres zones de vent ou des hauteurs supplémentaires sur demande / Andere Windzonen oder weitere Hakenhöhen auf Anfrage / Per zone con velocità del vento particolari o altezze superiori consultare il fabbricante / При других ветренных зонах о при большой высоте проконсультируйтесь с нами



Construcciones Metálicas COMANSA S. A.

Tel.: (34) 948 335 020 / Fax: (34) 948 330 810 / e-mail: info@comansa.com
Polígono Urbizkain E-31620 HUARTE-PAMPLONA.- SPAIN

DS.1307.07.IA 02/14 **5LC5010/8,820 lb**