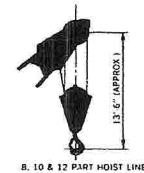
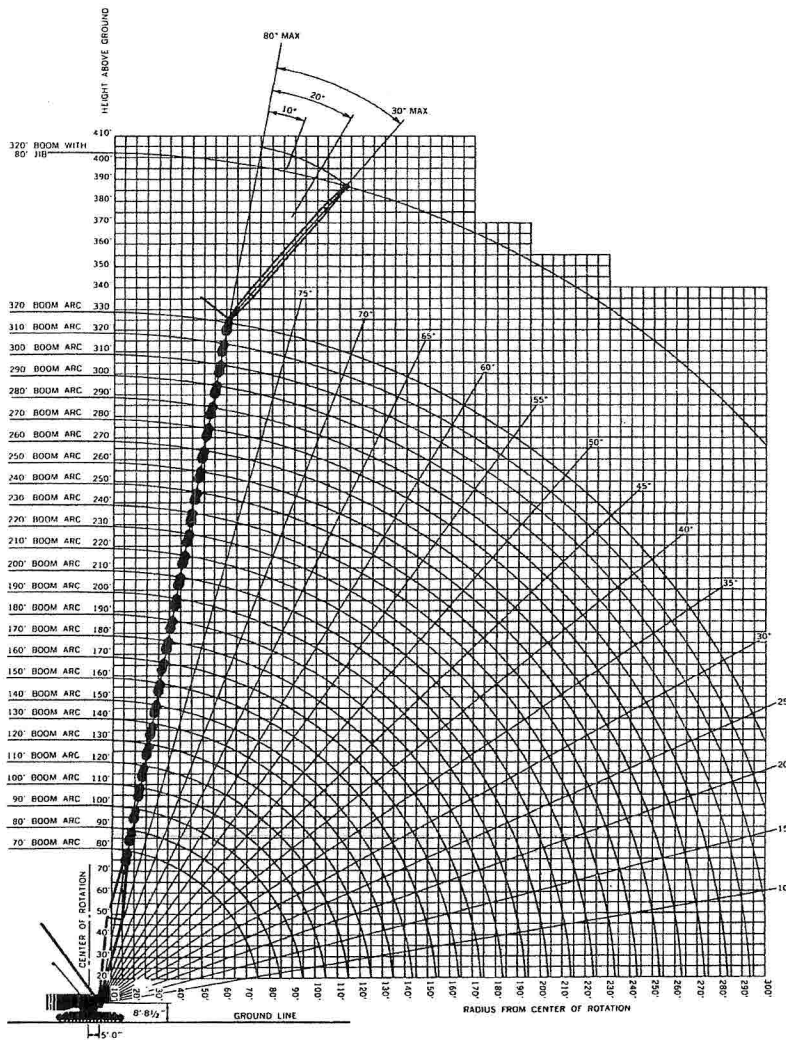
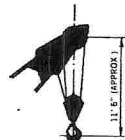


# P&H 5300-5300-R

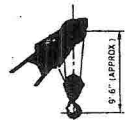
**Heavy duty crawler crane**  
**320' boom plus 80' jib**  
**300 tons with taper tip**  
**250 tons with hammerhead tip**



B. 10 & 12 PART HOIST LINE



4, 5 & 6 PART HOIST LINE



2 & 3 PART HOIST LINE

This P & H Model 5300 and 5300-R meets the requirements of ANSI B30.5-1968. Boom structure has been tested per SAE J987. Machine stability has been tested per SAE J765.

## WARNING

Using this equipment in excess of rated loads, in areas of chart not rated, or with disregard of instructions will result in unsafe operating conditions and is a violation of the U.S. Dept. of Labor Safety and Health Regulations for Construction.

# P&H

## MODEL 5300 and 5300-R 300 TON CRAWLER CRANE

with 127,200 lbs. counterweight

### rated crane loads in pounds main boom (94" x 94" chord centerline) in 360° work area with crawlers fully extended

**WARNING:** Crawlers must be extended to 11'-0" from centerline for all crane operations. Crawlers may be retracted to 7'-0" from centerline only for traveling. When retracted centerline of machine upper must be parallel with crawlers.

Operating radius is the horizontal distance from centerline of rotation to a vertical line through the center of gravity of the load.

Ratings shown are only for combination of P & H manufactured upper, crawlers, boom, jib, and counterweights. Boom backstops are required for all boom lengths. Boom inserts and guy cables must be arranged as shown in the "Owner and Operators Manual". Standard boom hoist reeving is 14 part line. Mast required with gantry in intermediate position and crawlers fully extended for all crane operations, when boom is equipped with jib, main hook ratings must be reduced by 3,500 lbs. for 30 ft. jib; 4,200 lbs. for 40 ft. jib; 4,600 lbs. for 50 ft. jib; 5,000 lbs. for 60 ft. jib; 5,700 lbs. for 70 ft. jib; and 6,200 lbs. for 80 ft. jib.

Ratings shown are based on freely suspended loads and make no allowance for such factors as wind effect on lifted load, ground conditions, out-of-level, operating speeds or any other condition that could be detrimental to the safe operation of this equipment. The operator, therefore, has the responsibility to judge the existing conditions and reduce lifted loads and operating speeds accordingly. Ratings do not exceed 75% of tipping load as determined by SAE J765. Deduct weight of hook block(s), slings, and all other

load handling accessories from main boom or jib rating shown. Ratings are based on a total of three counterweights, two 41,600 lbs. and one 44,000 lbs. for a total of 127,200 lbs.

**WARNING:** The wind effect on the lifted load can cause sufficient side load to overstress boom or jib structure. When suspended load will not remain in line with boom derate chart 25%. We recommend stopping operation when wind is above 30 M.P.H. and tying off, or lowering, boom when wind is above 50 M.P.H. When continued operation under windy conditions is necessary, consult factory for special derated load rating chart.

P & H Type 25 Wire Rope: 6 x 25 F I.W.R.C., preformed extra improved plow steel wire rope (filler wire). Refer to "Owner and Operators Manual" for all boom point reeving.

**WARNING:** When one inch diameter P & H Type II Wire Rope (18 x 7 non-rotating preformed improved plow steel wire rope fiber core) is used for jib line on rear drum, maximum lifted load including hook and swivel must not exceed 21,000 lbs. Non-rotating rope is approved only for single line operation.

Total guy ropes consist of basic guy ropes, listed above boom lengths, plus matching insert guy ropes.

Ratings marked \* are limited by strength of materials. This rating plate does not apply to hammerhead tip or container tip operation.

# PCSA CLASS 18-2076

**BOOM LENGTH 70 ft. to 150 ft.**

For 70'-100' Boom, Basic Guy Rope Set is: 1 Set @ 25' 1"; 1 Set @ 7' 0"; 1 Set @ 5' 0"

Oper Rad. Ft.	70 Ft. Boom			80 Ft. Boom			90 Ft. Boom			100 Ft. Boom			110 Ft. Boom			120 Ft. Boom			130 Ft. Boom			140 Ft. Boom			150 Ft. Boom			Oper Rad. Ft.								
	Angle	Boom Pt. El.	Rating Lbs.	Angle	Boom Pt. El.	Rating Lbs.	Angle	Boom Pt. El.	Rating Lbs.	Angle	Boom Pt. El.	Rating Lbs.	Angle	Boom Pt. El.	Rating Lbs.	Angle	Boom Pt. El.	Rating Lbs.	Angle	Boom Pt. El.	Rating Lbs.	Angle	Boom Pt. El.	Rating Lbs.	Angle	Boom Pt. El.	Rating Lbs.									
18	79	79.7	600000*				WARNING: Maximum rating for 30 ft. 3 sheave light duty tip is 250,000 lbs.																													
20	78	79.3	542500*																											20						
25	73	78.0	440800	76	88.4	440800	77	98.7	427000*	78	108.9	400000*																		25						
30	69	76.3	320600	72	87.0	320500	74	97.4	320300	76	107.8	320200	77	118.1	319500	78	128.3	319300	79	138.5	300000*										30					
35	65	74.2	251000	68	85.1	250800	71	95.8	250600	73	106.4	250400	74	116.8	249700	76	127.1	249500	77	137.4	249000	78	147.7	248900	78	157.9	248700			35						
40	60	71.2	207600	64	82.6	207400	67	93.5	207200	70	104.3	206800	71	114.9	205900	73	125.4	205500	74	135.8	205000	76	146.2	204800	77	156.5	204400			40						
45	55	68.0	175600	60	79.9	175400	64	91.2	175100	66	102.3	174700	69	113.1	173900	71	123.8	173400	72	134.3	172900	73	144.8	172800	75	155.2	172300			45						
50	50	64.2	151900	56	76.7	151700	60	88.6	151400	63	99.9	151000	66	111.0	150100	68	121.9	149600	70	132.6	149100	71	143.2	149000	73	153.7	148500			50						
60	38	53.7	119100	47	68.6	118800	52	81.8	118500	57	94.1	118000	60	105.9	117200	63	117.3	116700	65	128.4	116200	67	139.4	116000	68	150.2	115500			60						
70	22	36.1	97500	37	57.0	97200	44	72.7	96800	49	86.5	96300	54	99.3	95500	57	111.5	95000	60	123.2	94400	62	134.6	94300	64	145.8	93800			70						
80				20	37.9	81900	34	60.1	81500	41	76.6	81000	47	91.0	80200	51	104.2	79600	55	116.8	79000	58	128.8	78900	60	140.5	78400			80						
90							19	39.6	70100	32	63.0	69600	39	80.3	68700	45	95.2	68200	49	108.9	67600	53	121.8	67400	55	134.2	66900			90						
100										18	41.2	60800	30	65.7	59900	38	83.7	59400	43	99.2	58700	47	113.4	58600	51	126.6	58000			100						
110													17	42.8	53000	29	68.3	52400	36	87.0	51700	41	103.1	51500	46	117.6	51000			110						
120																17	44.2	46800	28	70.8	46100	35	90.2	45800	40	106.7	45300			120						
130																		16	45.7	41500	27	73.2	41200	34	93.2	40600			130							
140																					15	47.0	37400	26	75.6	36700			140							
150																						15	48.3	33500					150							

**BOOM LENGTH 160 ft. to 240 ft.**

Oper Rad. Ft.	160 Ft. Boom			170 Ft. Boom			180 Ft. Boom			190 Ft. Boom			200 Ft. Boom			210 Ft. Boom			220 Ft. Boom			230 Ft. Boom			240 Ft. Boom			Oper Rad. Ft.		
	Angle	Boom Pt. El.	Rating Lbs.	Angle	Boom Pt. El.	Rating Lbs.	Angle	Boom Pt. El.	Rating Lbs.	Angle	Boom Pt. El.	Rating Lbs.	Angle	Boom Pt. El.	Rating Lbs.	Angle	Boom Pt. El.	Rating Lbs.	Angle	Boom Pt. El.	Rating Lbs.	Angle	Boom Pt. El.	Rating Lbs.	Angle	Boom Pt. El.	Rating Lbs.			
35	79	167.7	249600																										35	
40	77	166.7	203900	78	176.9	203500	79	187.1	203000	79	197.3	202500																		40
45	76	165.5	171800	76	175.8	171300	77	186.1	170800	78	196.3	170300	78	206.5	170200	79	216.7	169700	80	226.9	169200									45
50	74	164.1	148000	75	174.5	147500	76	184.9	147000	76	195.2	146500	77	205.5	146400	78	215.7	145800	78	225.9	145300	79	236.1	144800	79	246.3	143930*			50
60	70	160.9	115000	71	171.5	114500	72	182.0	113900	73	192.5	113400	74	202.9	113300	75	213.3	112700	76	223.6	112200	76	233.9	111600	77	244.2	111100			60
70	66	156.8	93200	68	167.7	92700	69	178.5	92200	70	189.5	91600	71	199.8	91500	72	210.3	90900	73	220.8	90300	74	231.2	89800	74	241.6	89200			70
80	62	152.0	77800	64	163.2	77300	65	174.3	76800	67	185.2	76200	68	196.0	76100	69	206.8	75400	70	217.4	74900	71	228.0	74300	72	238.6	73800			80
90	58	146.2	66300	60	157.8	65800	62	169.3	65300	63	180.6	64700	65	191.7	64600	66	202.7	63900	67	213.5	63300	68	224.3	62800	69	235.1	62200			90
100	54	139.3	57500	56	151.6	56900	58	163.5	56400	60	175.2	55800	62	186.6	55600	63	197.9	55000	64	209.1	54400	66	220.1	53800	67	231.0	53300			100
110	49	131.3	50400	52	144.3	49900	54	156.8	49300	56	169.0	48700	58	180.8	48600	60	192.5	47900	61	203.9	47300	63	215.3	46700	64	226.4	46200			110
120	44	121.7	44700	47	135.7	44100	50	149.0	43600	53	161.8	43000	55	174.2	42800	57	186.3	42100	58	198.2	41500	60	209.8	40900	61	221.3	40400			120
130	39	110.3	40000	43	125.7	39400	46	140.0	38800	49	153.6	38200	51	166.7	38000	53	179.3	37300	55	191.6	36700	57	203.7	36100	59	215.5	35600			130
140	32	96.2	36000	37	113.7	35400	41	129.5	34800	45	144.2	34200	48	158.1	34000	50	171.4	33300	52	184.3	32700	54	196.8	32100	56	209.0	31500			140
150	25	77.8	32700	31	99.0	32100	36	117.0	31400	40	133.2	30800	44	148.2	30500	46	162.4	29800	49	176.0	29300	51	189.1	28700	53	201.8	28100			150
160	14	49.6	30000	24	80.0	29200	31	101.8	28600	35	120.3	27900	39	136.8	27600	42	152.2	26900	45	166.6	26300	48	180.5	25700	50	193.8	25100			160
170				14	50.8	26900	24	82.1	26100	30	104.5	25500	34	123.4	25100	38	140.3	24300	41	156.0	23700	44	170.7	23100	47	184.8	22500			170
180							14	52.0	24100	23	84.1	23300	29	107.1	22900	34	126.4	22100	37	143.7	21500	40	159.7	20900	43	174.7	20300			180
190										13	53.2	21600	22	86.1	21000	28	109.6	20200	33	129.4	19600	36	147.0	18900	40	163.3	18300			190
200													13	54.3	19400	22	88.0	18500	28	112.1	17900	32	132.3	17200	36	150.3	16500			200
210																13	55.4	17200	21	89.9	16400	27	114.5	15700	31	135.1	15000			210
220																			12	56.5	15200	21	91.8	14400	26	116.8	13700			220
230																					12	57.5	13300	20	93.8	12500			230	
240																							12	58.6	11600				240	

# reeving and jib ratings

Main Hoist Drum Rated Loads for One and One-Quarter Inch Dia. P & H Type 25 Wire Rope						
Number of Parts of Main Hoist Reeving	1	2	3	4	5	6
Maximum Load — Lbs.	41700	83400	125000	166700	208400	250000
Number of Parts of Main Hoist Reeving	7	8	9	10	11	12
Maximum Load — Lbs.	291700	333400	375000	416700	458400	500000

Lifted loads in excess of 500,000 pounds requires 12 part reeving with special 1-1/4 dia. hoist rope with minimum breaking strength of 87.5 tons.

Maximum Jib (42" D x 42" W) Ratings for Lifting Crane Service — Lbs.						
One Inch Diameter P & H Type 25 Wire Rope						
*Use Two Parts of Line for Loads Above 25,000 Lbs.						
Offset Angle Jib to Boom Under Full Load	30 Ft. Jib	40 Ft. Jib	50 Ft. Jib	60 Ft. Jib	70 Ft. Jib	80 Ft. Jib
10°	50000*	37000*	29000*	22800	18400	15000
20°	41700*	31750*	25250*	19800	15650	12600
30° Max.	37500*	28800*	23200	18500	14600	11750

Jib crane ratings are based on strength of materials. When main boom load rating at operating radius is less than maximum, jib ratings stability governs and the lower value of main boom load rating must be used. Jibs are intended to increase lifting height — not operating radius — therefore maximum jib operating radius is limited to maximum rated radius of boom length on which jib is mounted.

# attachment data

## CRANE

**HEAVY-DUTY BOOM:** 70'-0" basic length in two sections, 40'-0" base, 30'-0" tip; pin connected; extendable up to 240'-0" length; tubular T-1 Steel; open throat; cross-section centerline 94" sq.; 6 boom point 30" P.D. sheaves for 1-1/4" dia. rope, anti-friction bearings. (Optional) 2 sheave tip extension. 30" P.D. sheaves for 1-1/4" rope, anti-friction bearings.

Tip and Inserts Overall . . . . . 102" Wide x 105" High  
Base Section Overall . . . . . 137" Wide x 111" High

**LIGHT-DUTY BOOM:** 70'-0" basic length in two sections, 40'-0" base, 30'-0" tip; pin connected; extendable up to 320'-0" length; tubular T-1 Steel; open throat; cross-section centerline 94" sq.; 3 boom point 30" P.D. sheaves for 1-1/4" dia. rope, anti-friction bearings. Booms 250 ft. and over require one additional 41,600 lb. counterweight and mid-point suspension. (Optional) 2 sheave tip extension. 30" P.D. sheaves for 1-1/4" rope, anti-friction bearings.

Tip and Inserts Overall . . . . . 102" Wide x 105" High  
Base Section Overall . . . . . 137" Wide x 111" High

**CONTAINER BOOM:** 70'-0" basic length in two sections, 40'-0" base, 30'-0" tip; pin connected; extendable up to 240'-0" length; tubular T-1 Steel; cross-section centerline 94" sq.; 2 double boom point 27" P.D. 1" dia. rope sheaves, anti-friction bearings (3 center mounted sheaves optional).

Tip and Inserts Overall . . . . . 102" Wide x 105" High  
Base Section Overall . . . . . 137" Wide x 111" High

**HAMMERHEAD BOOM:** 60'-0" basic length in three sections, 40'-0" base, 20'-0" two piece tip; pin connected; extendable up to 250'-0" length; tubular T-1 Steel; cross-section centerline 94" sq.; 6 boom point 30" P.D. 1-1/4" dia. rope sheaves, anti-friction bearings. Jib cannot be mounted on booms 210 ft. and over.

Tip w/o Frame and Inserts Overall . 102" Wide x 105" High  
Base Section Overall . . . . . 137" Wide x 111" High

**BOOM HOIST REEVING:** 14 parts of balanced line; spreader sheaves 16" P.D.; 1" dia. rope, anti-friction bearings.

**BOOM GUY ROPES (SECTIONAL):** 4 1-3/8" dia. galvanized structural bridge strand wire ropes. B.S. 116 tons with standard wire rope sockets, hot zinc type.

**JIB - REGULAR (1" DIA. ROPE):** 30'-0" basic length in two equal sections; pin connected; extendable up to 80'-0" tubular T-1 Steel; cross-section centerline 42" sq.; 1 jib point 18-3/4" P.D. 1" dia. rope sheave, anti-friction bearings. Jib compression strut 15 ft. lg. 1 strut sheave 18-3/4" P.D. for 1" rope, anti-friction bearing.

**JIB GUY ROPES (SECTIONAL):** 2 1-1/8" dia. 6 x 25 IWRC Type 25 Wire Ropes with swage sockets.

**JIB-OPTION (1-1/4" DIA. ROPE):** Same as regular jib except point section for 1 sheave 24-1/2" P.D. for 1-1/4" rope, anti-friction bearings. Jib compression strut 15 ft. lg. 1 strut sheave 24-1/2" P.D. for 1-1/4" rope, anti-friction bearings.

**MAST - REQUIRED FOR ALL BOOMS:** 45'-0" lg. 2 legs rectangular box section cross laced T-1 Steel. Mast foot 15" above boom foot to allow close coupling of mast and boom base for low clearance travel.

**HOOK BLOCK FOR LIGHT, HEAVY-DUTY AND HAMMERHEAD (1-1/4" DIA. ROPE):**

60 Ton Single Sheave 27-1/4" P.D., Swivel Hook, 3 Part Line.  
125 Ton 3 Sheave 27-1/4" P.D., Swivel Hook, 6 Part Line (Optional).

**HEAVY-DUTY AND HAMMERHEAD (1-1/4" DIA. ROPE):**  
250 Ton 6 Sheave 27-1/4" P.D. Swivel Hook, 12 Part Line (Optional).  
300 Ton 6 Sheave 27-1/4" P.D. Swivel Hook, 12 Part Line (Optional).

**HOOK BLOCK FOR CONTAINER (1" DIA. ROPE):**  
(2 Required) 30 Ton Single Sheave 21-1/2" P.D.; Swivel Hook; 3 Part Line.

(2 Required) 40 Ton 2 Sheave 21-1/2" P.D.; Swivel Hook; 4 Part Line (Optional).

(1 Required) 80 Ton 3 Sheave 21-1/2" P.D.; Swivel Hook; 6 Part Line (Optional). To be used for single front drum crane operation with container tip three center sheaves.

**HOOK BLOCK FOR JIB (1" DIA. ROPE):** 15 Ton W. Ball Hook, Single Part Line. (Wt. 1,100 lbs.) 25 Ton Single Sheave 21-1/2" P.D. Swivel Hook, 2 Part Line (Optional).

**CONTAINER HANDLING ASSEMBLY (OPTIONAL):** Consists of a load frame having two pickup points located at each end of the frame. The load frame is supplied with its own electric motor, pump and hydraulic reservoir to supply power to container spreaders which are suspended from load frame. An electrical cable with quick disconnects near boom point connects load frame to operator's module push button and indicator controls for control of spreader latching mechanism. The optional 12 kw AC generator set is required to power load frame motor, controls and flood lights. Hydraulically operated, electrically controlled, spreaders with necessary wire rope slings to connect to load frame are available for handling nominal 20 or 40 foot ASA/ISO containers.

**HOOK BLOCK FOR JIB (1-1/4" DIA. ROPE):** 15 Ton Wt. Ball Hook, Single Part Line. (Wt. 1,100 lbs.) 25 Ton Single Sheave 27-1/4" P.D. Swivel Hook, 2 Part Line (Optional).



equipped with 30 ft. light duty tip section and 168,800 lbs. counterweight

Ratings shown are based on four counterweights, three 41,600 lbs. and one 44,000 lbs. for a total of 168,800 lbs.

All length booms without jib may be erected over side with crawlers extended or end of crawlers. All booms with jib must be erected over idler (long) end of crawlers.

Attach midpoint suspension (center hitch) as follows: 250 ft. boom 120 ft. up from boom foot pin; 260 ft. boom 130 ft. up; 270 ft. boom, 280 ft. boom, and 290 ft. boom 140 ft. up; 300 ft. boom and 310 ft. boom 150 ft. up; and 320 ft. boom 160 ft. up.

This rating plate does not apply to hammerhead tip, container tip, or heavy duty tip operations.

Note 1: Ratings above heavy line are limited by strength of materials.  
Note 2: Ratings below heavy line are limited by strength of materials.

**BOOM LENGTH 250 ft. to 320 ft.**

Oper Rad. Ft.	250 Ft. Boom			260 Ft. Boom			270 Ft. Boom			280 Ft. Boom			290 Ft. Boom			300 Ft. Boom			310 Ft. Boom			320 Ft. Boom			Oper Rad. Ft.
	Angle	Boom Pt. El.	Rating Lbs.	Angle	Boom Pt. El.	Rating Lbs.	Angle	Boom Pt. El.	Rating Lbs.	Angle	Boom Pt. El.	Rating Lbs.	Angle	Boom Pt. El.	Rating Lbs.	Angle	Boom Pt. El.	Rating Lbs.	Angle	Boom Pt. El.	Rating Lbs.	Angle	Boom Pt. El.	Rating Lbs.	
60	77	254.5	131200	78	264.7	130600	78	274.9	122000	79	285.1	115000	79	295.3	105000	77	303.5	94500	78	313.7	88500	78	323.9	55000	70
70	75	252.0	105800	76	262.3	105200	76	272.7	105100	77	282.9	104700	77	293.2	100000	77	301.1	85600	76	311.4	79000	76	321.7	54000	80
80	73	249.1	87800	73	259.6	87300	74	270.0	87200	74	280.4	86600	75	290.7	86100	75	298.2	72100	74	308.7	71600	75	319.1	53000	90
90	70	245.7	74400	71	256.3	73800	72	266.9	73700	72	277.4	73200	73	287.9	72700	74	298.3	61700	72	305.7	61200	73	316.2	52000	100
100	68	241.9	64000	69	252.6	63500	69	263.4	63400	70	274.0	62800	71	284.6	62300	72	295.2	53400	70	302.3	52900	71	312.9	51000	110
110	65	237.5	55800	66	248.5	55200	67	259.4	55100	68	270.2	54500	69	280.9	54000	70	291.6	46600	68	298.5	46100	69	309.2	45600	120
120	63	232.6	49000	64	243.8	48400	65	254.9	48300	66	265.9	47700	67	276.9	47200	67	287.7	41000	66	294.3	40500	67	305.2	39900	130
130	60	227.1	43400	61	238.6	42800	62	249.9	42700	63	261.2	42100	64	272.3	41600	65	283.3	36300	64	289.7	35700	65	300.8	35200	140
140	57	221.0	38700	59	232.8	38100	60	244.4	38000	61	255.9	37400	62	267.3	36800	63	278.5	32200	62	284.6	31700	63	295.9	31100	150
150	55	214.2	34700	56	226.4	34100	58	238.4	34000	59	250.1	33400	60	261.8	32800	61	273.3	28800	60	279.1	28200	61	290.6	27600	160
160	52	206.7	31200	53	219.3	30600	55	231.7	30500	56	243.8	29900	58	255.7	29300	59	267.5	25700	58	273.1	25100	59	284.6	24600	170
170	49	198.4	28200	51	211.5	27600	52	224.3	27500	54	236.8	26800	55	249.1	26300	57	261.2	23000	56	266.5	22500	57	278.5	21900	180
180	46	189.0	25600	48	202.8	25000	50	216.2	24800	51	229.1	24200	53	241.8	23600	54	254.3	20700	53	259.3	20100	55	271.7	19500	190
190	42	178.6	23300	45	193.2	22700	47	207.2	22500	49	220.7	21800	50	233.9	21200	52	246.7	18600	51	251.6	18000	52	264.3	17400	200
200	39	166.9	21200	41	182.4	20600	44	197.2	20400	46	211.5	19700	48	225.2	19100	49	238.5	16700	48	243.1	16100	50	266.3	15500	210
210	35	153.4	19400	38	170.3	18800	41	186.2	18500	43	201.2	17800	45	215.6	17300	47	229.6	15000	46	233.8	14400	48	247.5	13800	220
220	31	137.9	17800	34	156.5	17100	37	173.7	16900	40	189.8	16200	42	205.1	15600	44	219.7	13500	43	223.7	12900	45	238.0	12300	230
230	26	119.2	16400	30	140.6	15700	34	159.6	15400	37	177.0	14600	39	193.4	14100	41	208.9	12100	40	212.6	11500	43	227.7	10900	240
240	20	95.3	15200	25	121.4	14400	29	143.2	14000	33	162.6	13300	36	180.3	12700	38	196.9	10000	38	200.3	8500	40	216.3	6500	250
250	11	59.6	14200	20	97.1	13300	25	123.6	12800	29	145.8	12000	32	165.5	11000	35	183.5	8000	35	186.6	6750	37	203.7	5500	260
260				11	60.6	12500	19	98.8	11000	24	125.8	10500	28	148.3	9500	32	168.3	7250	28	160.9	6250				270
270										19	100.4	8500	24	127.9	7250	28	150.9								280
280													19	102.1	5500										

See Note 2.