

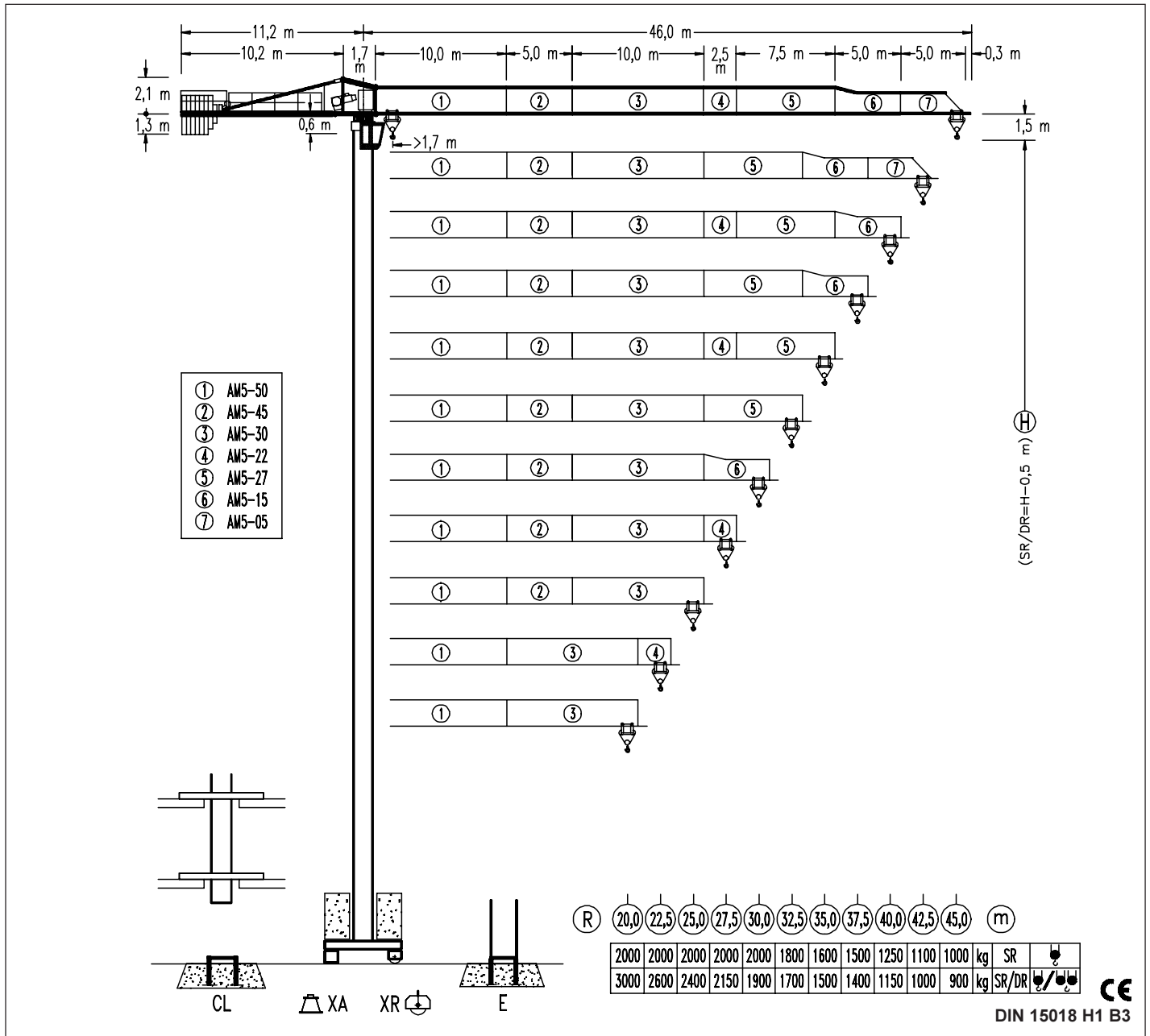


COMANSA

LINDEN 500

5 LC 4510

4t



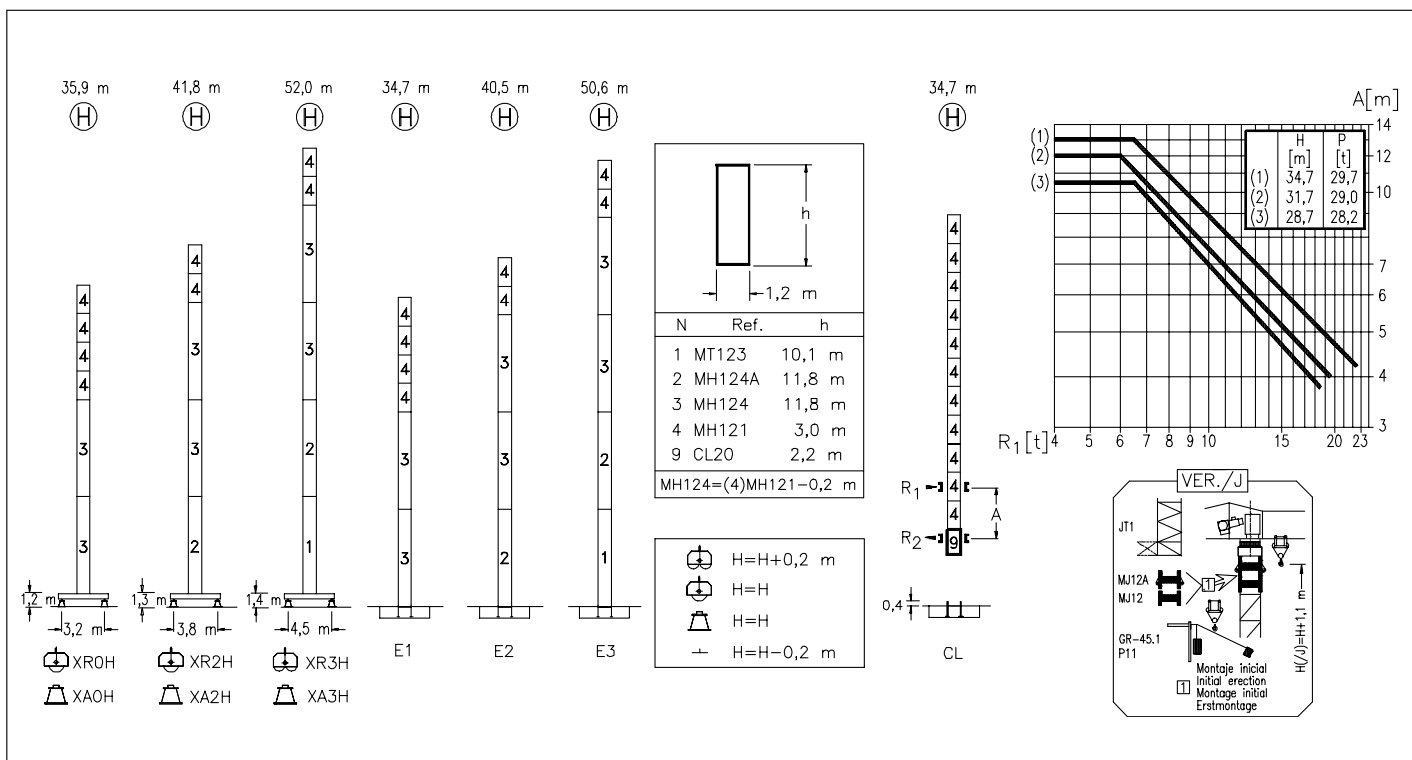
(R)	20,0	22,5	25,0	27,5	30,0	32,5	35,0	37,5	40,0	42,5	45,0	(m)
	2000	2000	2000	2000	2000	1800	1600	1500	1250	1100	1000	kg
	3000	2600	2400	2150	1900	1700	1500	1400	1150	1000	900	kg
												SR
												SR/DR



DIN 15018 H1 B3

(R)		R(Cmax)	Cmax	20,0	22,5	25,0	27,5	30,0	32,5	35,0	37,5	40,0	42,5	45,0	(m)	kg
(45,0)	SR	25,1 m	2000	2000	2000	2000	1800	1620	1480	1360	1250	1150	1070	1000		
	SR/DR	13,5 m	4000	2530	2200	1930	1720	1540	1390	1270	1160	1060	980	900		
(42,5)	SR	25,5 m	2000	2000	2000	1840	1660	1520	1390	1280	1180	1100	1100			
	SR/DR	13,7 m	4000	2580	2240	1980	1760	1580	1430	1300	1180	1090	1000			
(40,0)	SR	26,7 m	2000	2000	2000	1940	1750	1600	1460	1350	1250	1150	1150			
	SR/DR	14,3 m	4000	2710	2360	2080	1850	1660	1510	1370	1250	1150				
(37,5)	SR	29,2 m	2000	2000	2000	2000	1940	1770	1620	1500	1400					
	SR/DR	15,5 m	4000	2990	2610	2300	2060	1850	1680	1530	1400					
(35,0)	SR	28,8 m	2000	2000	2000	2000	1910	1740	1600	1500						
	SR/DR	15,3 m	4000	2940	2570	2260	2020	1820	1650	1500						
(32,5)	SR	29,6 m	2000	2000	2000	2000	1970	1800	1700							
	SR/DR	15,7 m	4000	3030	2640	2330	2080	1880	1700							
(30,0)	SR	30,0 m	2000	2000	2000	2000	2000	2000								
	SR/DR	15,9 m	4000	3070	2680	2360	2110	1900								
(27,5)	SR	27,5 m	2000	2000	2000	2000										
	SR/DR	16,1 m	4000	3120	2730	2410	2150									
(25,0)	SR	25,0 m	2000	2000	2000											
	SR/DR	16,1 m	4000	3110	2720	2400										

2000	2000	20,0 m	SR	(20,0)
3000	4000	15,6 m	SR/DR	
2000	2000	22,5 m	SR	(22,5)
2600	2980	15,5 m	SR/DR	
22,5	20,0	Cmax	R(Cmax)	(R)



CS2-1.9

1,9 kW

16 m/min
48 m/min

CFU-2.2

2,2 kW

0 ⌀ 80 m/min

GR-7.5

75 Nm

0 ⌀ 0,8 rpm

TS2-3.0	TS2-4.5	TS2-5.5
2x30 Nm	2x45 Nm	2x55 Nm
0 ⌀ 20 m/min		
XR0H	XR2H	XR3H

250 m

ES3-13-10

13,2 kW

		I	II	III
SR	m/min	7,5	30	60
	kg	2000	2000	1200
DR	m/min	3,7	15	30
	kg	4000	4000	2400

250 m

EFU2-11-10

11 kW

Tensión de alimentación Operating voltage Tension de service Betriebsspannung	400 V 3 ph 50 Hz
--	---

Opcional Optional En option Kaufoption	
---	--

R. máx.	En servicio In operation En service In Betrieb	XR0H 40,7 t XR2H 41,1 t XR3H 49,6 t
---------	---	--

R. máx.	Fuera de servicio Out of service Hors service Ausser Betrieb	XR0H 52,5 t XR2H 60,6 t XR3H 80,6 t
---------	---	--



Construcciones Metálicas COMANSA S. A.
 Polígono Industrial de Areta
 E-31620 Huarte-Pamplona.- SPAIN
 Tel.: (34) 948 335 020 - Fax: (34) 948 330 810
 e-mail: info@comansa.com