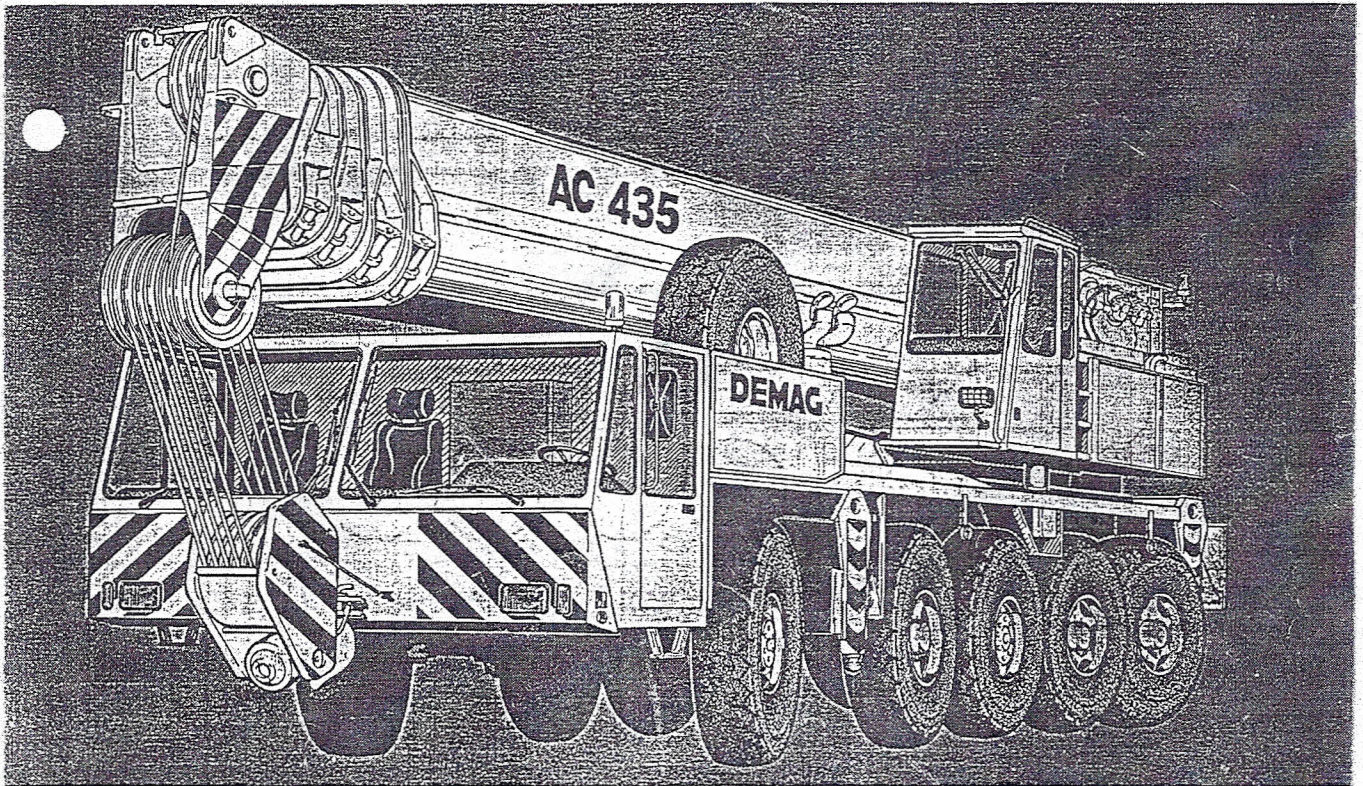


**MANNESMANN
DEMAG**

180 ton Telescopic Crane

Demag AC 435



Notes to lifting capacity

Lifting capacities do not exceed 75/85% of tipping load.

Weight of hook blocks and slings is part of the load, and is to be deducted from the capacity ratings.

Crane operation is permissible up to a

wind speed of 32 ft/s

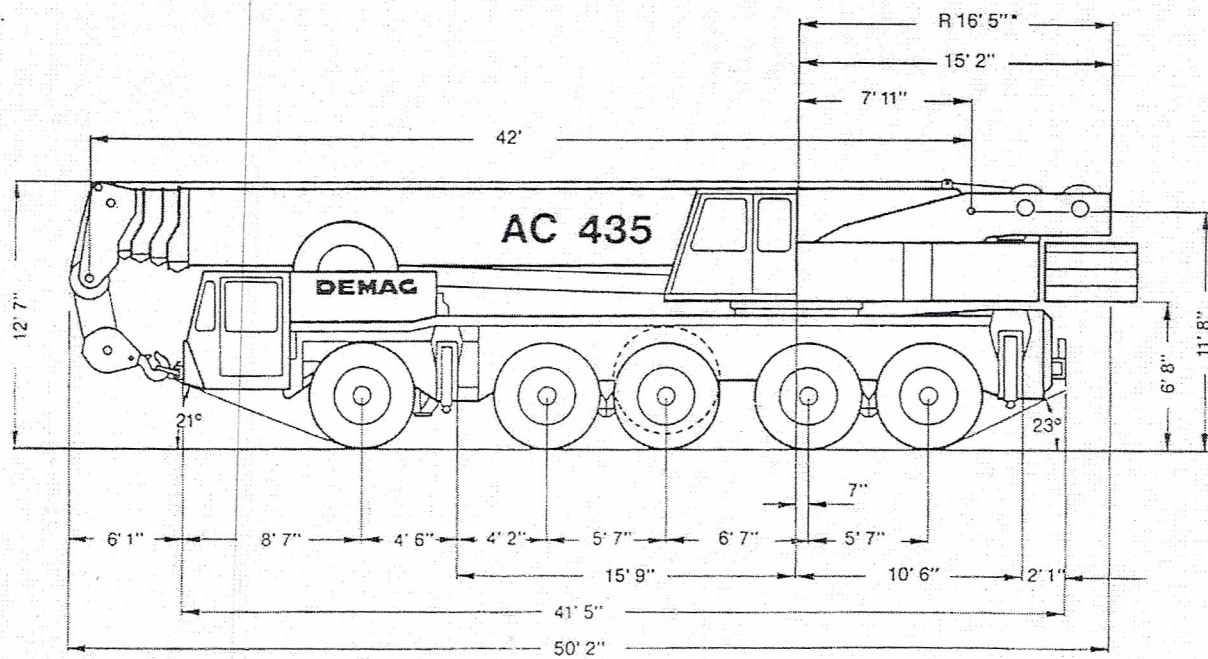
Consult operation manual for further details on wind speed.

All capacities above the parting line are based on structural competence. Capacities below the parting line are based on machine stability.

Crane operation subject to computer charts, only!

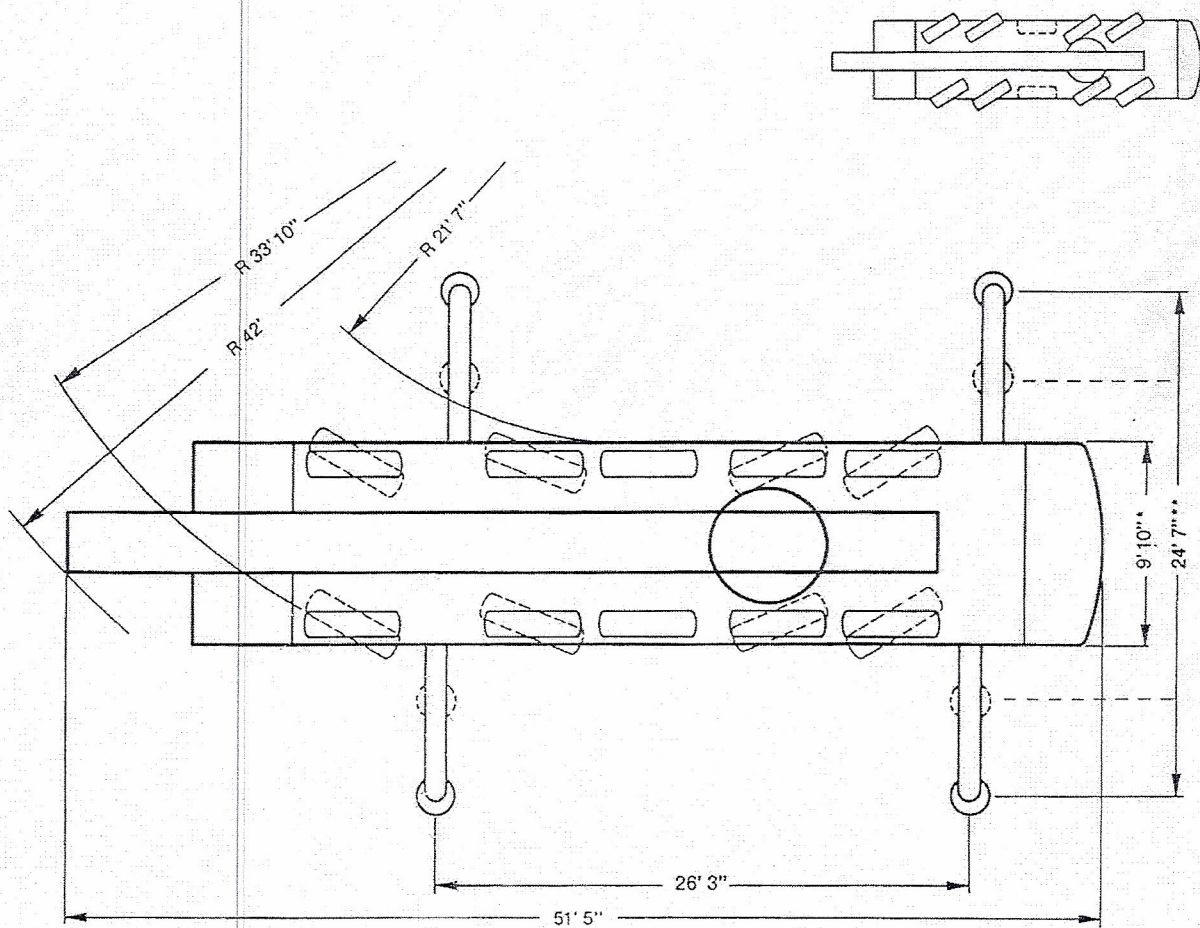
For crane operation consult operation manual first!

Dimensions



* Width with more than 59,000 lb of counterweight: 16' 5"; tail swing: 16' 11"

Dimensions



- * Width with more than 59,000 lb of counterweight: 16' 5", tail swing: 16' 11"
- ** Duties for outrigger base 16' upon request

Specifications

Working speeds (infinitely variable)

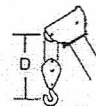
Units	Normal speed	High speed	Single line pull	Length of hoist rope
Hoist I	197 ft/min	394 ft/min	16,100 lb	984 ft
Hoist II	197 ft/min	394 ft/min	16,100 lb	853 ft
Slewing	max. 2 rpm			
Telescoping speed	42 ft - 164 ft: 110 s			
Boom elevation	-2° - +83°: 60 s			

Carrier performance

Travel speeds	
Reverse	0.. 3 mph
Forward	0.. 43 mph
Gradeability in travel order	max. 60%
Ground clearance	1' 3"

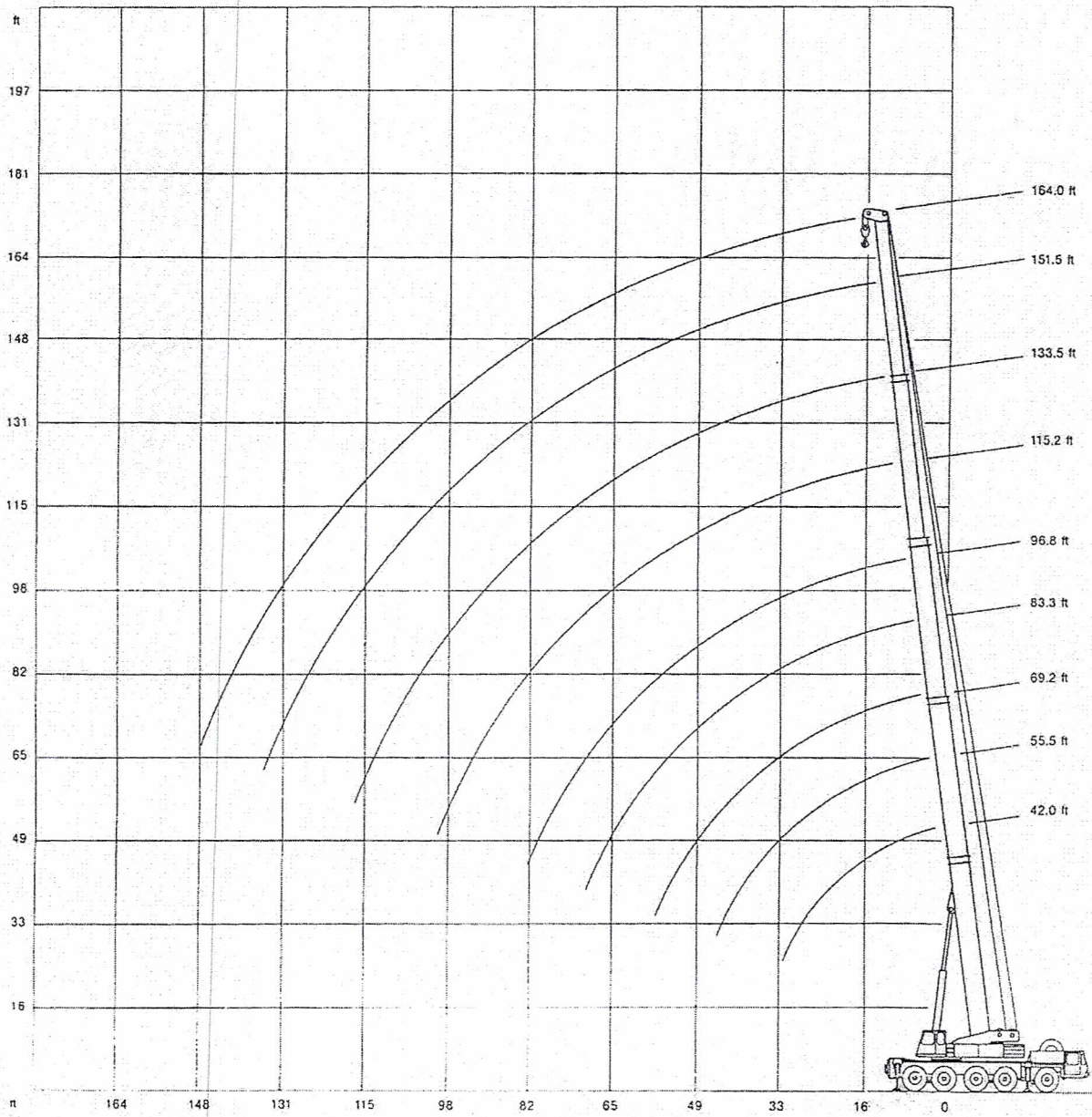
Hook block/Single line hook

Type	Capacity	Number of sheaves	Number of lines	Weight	"D"
160*)	360,000 lb	11	22	4,400 lb	8 ft
80	194,000 lb	5	11	2,680 lb	8 ft
63	123,000 lb	3	7	2,320 lb	8 ft
25	53,000 lb	1	3	1,670 lb	8 ft
8	17,600 lb	Single line hook	1	815 lb	6 ft

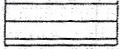



*) heavy-duty attachment is required, without heavy-duty attachment: capacity 220,000 lb (14 lines)

Working range main boom



Lifting capacities main boom in 1,000 lb

97,000 lb   360° 85%

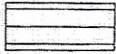

Radius ft	Main boom								
	42.0 ft	55.5 ft*	69.2 ft*	83.3 ft*	96.8 ft*	115.2 ft	133.5 ft	151.5 ft	164.0 ft
10.0	360.0 ¹⁾ /327.0 ²⁾	198.0	-	-	-	-	-	-	-
11.0	308.0 ²⁾	198.0	198.0	-	-	-	-	-	-
13.0	277.0	198.0	198.0	165.0	132.0	-	-	-	-
15.0	251.0	198.0	198.0	164.5	132.0	-	-	-	-
16.0	243.0	198.0	198.0	161.0	132.0	83.5	-	-	-
19.0	215.0	198.0	194.5	149.5	132.0	83.5	79.0	-	-
23.0	180.5	178.0	175.0	134.5	123.5	83.5	79.0	61.5	-
26.0	159.5	156.5	155.0	124.5	116.5	83.5	78.0	61.5	46.2
29.0	141.0	139.5	137.5	116.0	109.5	83.5	75.5	61.5	46.2
33.0	-	120.5	118.5	105.5	100.5	83.5	71.5	61.0	46.2
39.0	-	98.0	96.5	91.5	88.0	75.5	66.5	57.5	46.2
46.0	-	-	75.0	77.0	75.5	67.0	60.5	53.3	46.2
52.0	-	-	61.5	63.0	62.5	60.5	55.7	49.2	44.2
59.0	-	-	-	51.2	50.8	54.5	50.5	44.3	41.4
65.0	-	-	-	43.5	42.9	48.4	45.8	40.7	38.6
72.0	-	-	-	-	35.8	41.4	41.5	36.9	35.5
79.0	-	-	-	-	29.9	35.5	35.7	33.6	32.2
85.0	-	-	-	-	-	31.3	31.5	30.7	29.4
92.0	-	-	-	-	-	27.2	27.4	27.4	26.8
98.0	-	-	-	-	-	24.4	24.6	24.4	24.2
105.0	-	-	-	-	-	-	21.3	21.3	20.9
111.0	-	-	-	-	-	-	19.1	18.9	18.7
118.0	-	-	-	-	-	-	-	16.7	16.1
124.0	-	-	-	-	-	-	-	14.9	14.3
131.0	-	-	-	-	-	-	-	13.0	12.4
138.0	-	-	-	-	-	-	-	-	10.9
144.0	-	-	-	-	-	-	-	-	9.5

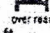
Boom extension sequence										%
Tele 1	0	45	90	68	90	60	75	90	100	100
Tele 2	0	0	0	68	90	60	75	90	100	100
Tele 3	0	0	0	0	0	60	75	90	100	100
Tele 4	0	0	0	0	0	60	75	90	100	100

*) Tele 1 pinned
 1) static test load only
 2) only over rear!

Duties above 220,000 lb with heavy-duty attachment only.

Lifting capacities main boom in 1,000 lb

59,500 lb   360° 85%

Radius ft	Main boom											 Overhead	
	42.0 ft	55.5 ft*	69.2 ft*	83.3 ft*	96.8 ft*	115.2 ft	133.5 ft	151.5 ft	164.0 ft	42.0 ft	69.2 ft	1,000 lb	
10.0	316.0	198.0	-	-	-	-	-	-	-	-	-	-	-
11.0	299.0	198.0	198.0	-	-	-	-	-	-	-	-	-	-
13.0	268.0	198.0	198.0	165.0	77.0	132.0	77.0	-	-	-	-	-	-
15.0	244.0	198.0	198.0	164.5	77.0	132.0	77.0	-	-	-	-	43.0	39.7
16.0	233.0	198.0	198.0	161.0	77.0	132.0	77.0	83.5	66.0	-	-	40.4	37.1
19.0	200.0	191.5	190.5	149.5	77.0	132.0	77.0	83.5	66.0	79.0	41.8	34.0	30.5
23.0	164.5	161.5	160.0	134.5	77.0	123.5	76.5	83.5	64.5	79.0	41.8	27.2	23.7
26.0	143.0	140.0	138.0	124.5	77.0	116.5	73.0	83.5	61.5	78.0	41.8	23.2	19.9
29.0	125.5	122.5	120.0	116.0	77.0	109.5	69.0	83.5	58.3	75.5	41.8	19.9	16.6
33.0	-	98.5	96.0	98.0	72.5	97.5	64.5	83.5	54.0	71.5	41.7	-	12.8
39.0	-	73.5	71.5	73.5	65.5	72.5	57.3	75.5	47.9	66.5	37.3	57.5	8.8
46.0	-	-	53.2	54.7	55.4	54.3	50.6	60.5	41.3	60.5	32.5	53.3	5.0
52.0	-	-	42.7	44.2	48.0	43.6	45.8	49.8	36.5	50.2	28.9	49.2	2.6
59.0	-	-	-	34.6	41.0	34.2	39.7	40.2	32.0	40.4	25.6	40.4	-
65.0	-	-	-	28.2	35.8	27.7	35.2	33.9	28.7	34.3	23.5	34.3	34.1
72.0	-	-	-	-	-	21.7	30.5	28.1	26.2	28.3	21.2	28.3	28.1
79.0	-	-	-	-	-	17.0	26.0	23.2	23.5	23.4	19.3	23.4	23.2
85.0	-	-	-	-	-	-	-	19.7	21.9	20.0	18.1	20.0	19.7
92.0	-	-	-	-	-	-	-	16.7	19.7	16.9	16.9	16.9	16.4
98.0	-	-	-	-	-	-	-	14.2	17.5	14.2	15.7	14.2	14.0
105.0	-	-	-	-	-	-	-	-	-	11.9	14.5	11.9	11.6
111.0	-	-	-	-	-	-	-	-	-	10.0	13.5	10.0	9.8
118.0	-	-	-	-	-	-	-	-	-	-	-	8.1	7.9
124.0	-	-	-	-	-	-	-	-	-	-	-	6.7	6.5
131.0	-	-	-	-	-	-	-	-	-	-	-	5.5	4.9
138.0	-	-	-	-	-	-	-	-	-	-	-	3.7	-
144.0	-	-	-	-	-	-	-	-	-	-	-	2.7	-

Boom extension sequence

Tele	%														
Tele 1	0	45	90	68	0	90	0	60	0	75	0	90	100	0	90
Tele 2	0	0	0	68	45	90	60	60	80	75	100	90	100	0	0
Tele 3	0	0	0	0	45	0	60	60	80	75	100	90	100	0	0
Tele 4	0	0	0	0	45	0	60	60	80	75	100	90	100	0	0

*) Tele 1 pinned

Duties above 220,000 lb with heavy-duty attachment only.

Lifting capacities main boom in 1,000 lb

42,000 lb  360° 85%

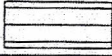

Radius ft	Main boom										Over rear	
	42.0 ft	55.5 ft*	69.2 ft*	83.3 ft*	96.8 ft*	115.2 ft	133.5 ft	151.5 ft	164.0 ft	42.0 ft	69.2 ft	
	1,000 lb										1,000 lb	
10.0	310.0	198.0	-	-	-	-	-	-	-	-	-	-
11.0	292.0	198.0	198.0	-	-	-	-	-	-	-	-	-
13.0	264.0	198.0	198.0	165.0	77.0	132.0	77.0	-	-	-	-	-
15.0	237.0	198.0	198.0	164.5	77.0	132.0	77.0	-	-	-	-	36.9
16.0	224.0	198.0	198.0	161.0	77.0	132.0	77.0	83.5	66.0	-	-	34.6
19.0	190.0	183.0	182.0	149.5	77.0	132.0	77.0	83.5	66.0	79.0	41.8	28.6
23.0	152.0	148.5	146.5	134.5	77.0	123.5	76.5	83.5	64.5	79.0	41.8	22.4
26.0	127.0	122.5	119.5	121.0	77.0	116.5	73.0	83.5	61.5	78.0	41.8	19.0
29.0	104.5	100.0	97.0	99.5	77.0	98.0	69.0	83.5	58.3	75.5	41.8	15.9
33.0	-	78.5	76.0	78.0	72.5	77.0	64.5	83.0	54.0	71.5	41.7	9.1
39.0	-	58.1	55.7	57.7	65.0	56.8	57.3	64.0	47.9	63.5	37.3	5.5
46.0	-	-	39.5	41.3	49.5	40.9	50.1	47.5	41.3	47.9	32.5	47.9
52.0	-	-	30.5	32.2	40.2	31.4	40.6	38.2	36.3	38.4	28.9	38.4
59.0	-	-	-	23.6	32.0	23.2	32.4	30.0	31.7	30.2	25.6	30.2
65.0	-	-	-	18.7	26.7	17.9	27.2	24.7	27.7	25.0	23.5	25.0
72.0	-	-	-	-	-	13.1	22.6	19.5	23.0	19.7	20.7	19.7
79.0	-	-	-	-	-	9.3	18.5	15.5	19.0	15.7	19.0	15.7
85.0	-	-	-	-	-	-	-	12.7	16.0	12.9	16.4	12.9
92.0	-	-	-	-	-	-	-	10.1	13.4	10.3	13.8	10.3
98.0	-	-	-	-	-	-	-	8.2	11.5	8.3	11.8	8.3
105.0	-	-	-	-	-	-	-	-	-	6.3	9.9	6.1
111.0	-	-	-	-	-	-	-	-	-	4.7	8.3	4.7
118.0	-	-	-	-	-	-	-	-	-	-	-	3.3

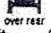
Boom extension sequence													%		
Tele 1	0	45	90	68	0	90	0	60	0	75	0	90	100	0	90
Tele 2	0	0	0	68	45	90	60	60	80	75	100	90	100	0	0
Tele 3	0	0	0	0	45	0	60	60	80	75	100	90	100	0	0
Tele 4	0	0	0	0	45	0	60	60	80	75	100	90	100	0	0

*) Tele 1 pinned

Duties above 220,000 lb with heavy-duty attachment only.

Lifting capacities main boom in 1,000 lb

24,200 lb   360° 85%

Radius ft	Main boom										 over rear			
	42.0 ft	55.5 ft*	69.2 ft*	83.3 ft*	96.8 ft*	115.2 ft	133.5 ft	151.5 ft	164.0 ft	42.0 ft	69.2 ft			
	1,000 lb										1,000 lb			
10.0	303.0	198.0	-	-	-	-	-	-	-	-	-	-	-	
11.0	287.0	198.0	198.0	-	-	-	-	-	-	-	-	-	-	
13.0	257.0	198.0	198.0	165.0	77.0	132.0	77.0	-	-	-	-	-	-	
15.0	230.0	198.0	198.0	164.5	77.0	132.0	77.0	-	-	-	-	-	33.1	29.4
16.0	216.0	198.0	198.0	161.0	77.0	132.0	77.0	83.5	66.0	-	-	-	30.9	27.3
19.0	180.5	175.0	173.5	149.5	77.0	132.0	77.0	83.5	66.0	77.0	41.8	-	25.2	21.7
23.0	138.0	133.0	129.5	132.5	77.0	123.0	76.5	83.5	64.5	77.0	41.8	57.3	19.3	15.8
26.0	108.5	103.5	100.5	103.5	77.0	102.0	73.0	83.5	61.5	76.0	41.8	57.3	16.1	12.4
29.0	88.0	84.0	81.0	83.5	77.0	82.5	69.0	83.5	58.3	74.0	41.8	55.2	13.2	9.7
33.0	-	64.5	62.0	64.0	72.0	63.5	64.5	72.0	54.0	70.5	41.7	52.3	42.9	6.7
39.0	-	46.1	43.4	45.4	54.4	45.0	54.8	52.5	47.9	52.9	37.3	49.9	42.9	3.2
46.0	-	-	29.8	31.8	40.0	31.2	40.6	38.0	41.3	38.4	32.5	38.4	38.0	-
52.0	-	-	21.8	23.6	31.9	22.7	32.6	29.9	33.2	30.2	28.9	30.2	29.9	-
59.0	-	-	-	16.3	24.9	15.7	25.6	22.7	26.2	23.2	25.6	23.2	22.9	-
65.0	-	-	-	12.1	20.3	9.4	21.1	18.1	21.6	18.3	22.1	18.3	18.1	-
72.0	-	-	-	-	-	7.1	16.8	13.7	17.3	13.9	17.7	13.9	13.7	-
79.0	-	-	-	-	-	4.3	13.3	10.4	13.7	10.6	14.2	10.6	10.2	-
85.0	-	-	-	-	-	-	-	8.0	11.5	8.2	12.0	8.2	8.0	-
92.0	-	-	-	-	-	-	-	5.9	9.2	6.1	9.6	5.9	5.6	-
98.0	-	-	-	-	-	-	-	4.3	7.6	4.3	7.8	4.3	4.0	-
105.0	-	-	-	-	-	-	-	-	-	2.6	6.1	2.6	2.2	-
111.0	-	-	-	-	-	-	-	-	-	4.9	-	-	-	-


Boom extension sequence														%	
Tele 1	0	45	90	68	0	90	0	60	0	75	0	90	100	0	90
Tele 2	0	0	0	68	45	90	60	60	80	75	100	90	100	0	0
Tele 3	0	0	0	0	45	0	60	60	80	75	100	90	100	0	0
Tele 4	0	0	0	0	45	0	60	60	80	75	100	90	100	0	0

*) Tele 1 pinned

Duties above 220,000 lb with heavy-duty attachment only.

Lifting capacities main boom in 1,000 lb

0 lb   360° 85%

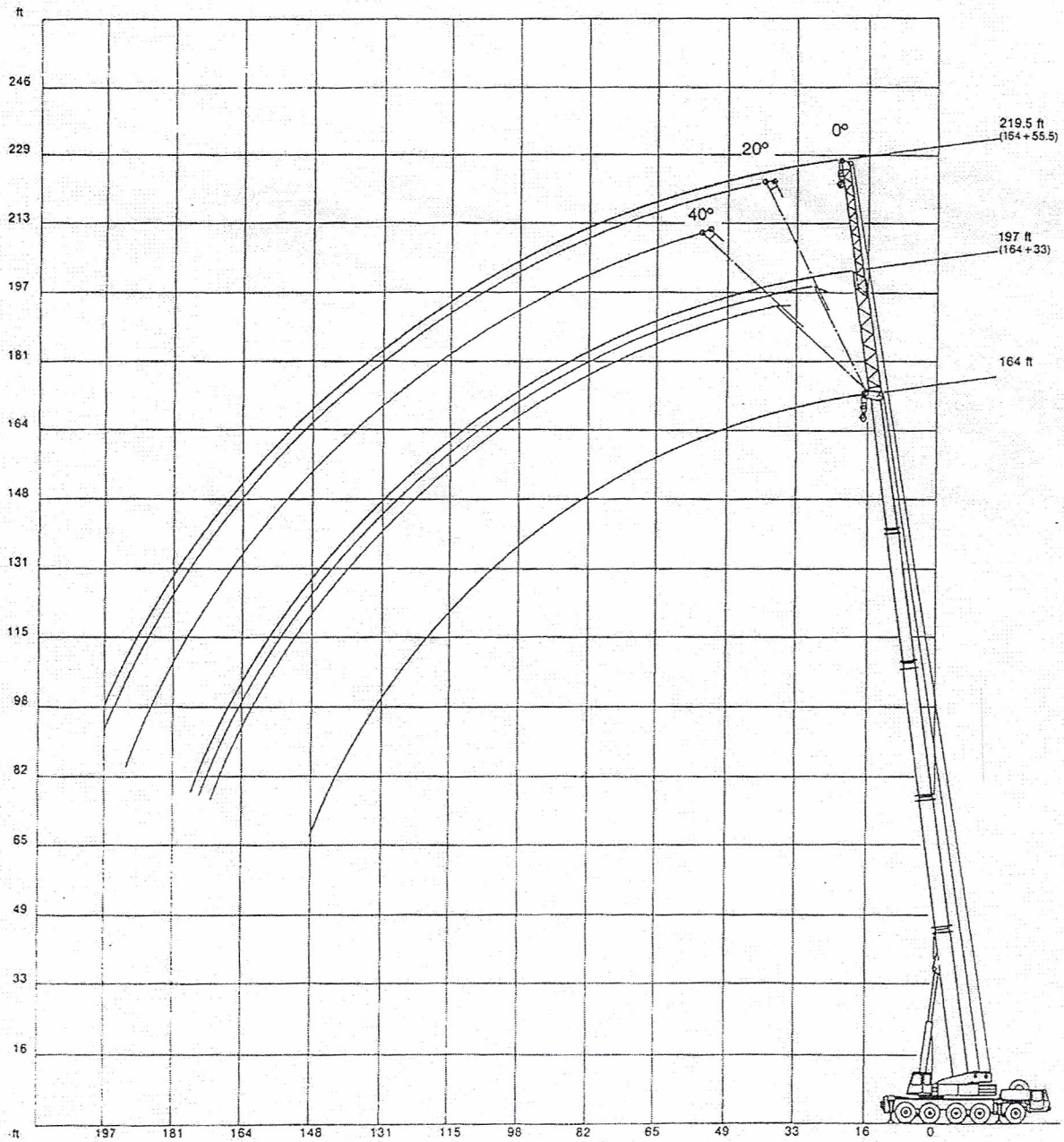
Radius ft	Main boom												 85%	
	42.0 ft	55.5 ft*	69.2 ft*	83.3 ft*	96.8 ft*	115.2 ft	133.5 ft	151.5 ft	164.0 ft	42.0 ft	69.2 ft	1,000 lb		
10.0	297.0	198.0	-	-	-	-	-	-	-	-	-	-	-	-
11.0	279.0	198.0	198.0	-	-	-	-	-	-	-	-	-	-	-
13.0	246.0	198.0	198.0	165.0	77.0	132.0	77.0	-	-	-	-	-	-	-
15.0	216.0	197.5	197.0	164.5	77.0	132.0	77.0	-	-	-	-	-	24.8	21.1
16.0	201.0	193.5	192.0	161.0	77.0	132.0	77.0	83.5	66.0	-	-	-	22.8	19.1
19.0	<u>143.5</u>	<u>138.5</u>	<u>135.0</u>	<u>131.5</u>	77.0	<u>125.0</u>	77.0	83.5	66.0	74.5	41.8	-	18.0	14.1
23.0	91.5	86.5	84.0	86.5	77.0	85.5	76.5	83.5	64.5	74.5	41.8	52.9	12.9	9.2
26.0	70.0	65.0	62.5	65.0	<u>74.5</u>	64.5	73.0	<u>72.5</u>	61.5	<u>72.5</u>	41.8	52.9	10.1	6.4
29.0	55.2	50.7	48.0	50.3	60.0	49.8	<u>60.5</u>	58.2	58.3	58.6	41.8	<u>52.9</u>	7.8	3.9
33.0	-	37.5	34.9	37.0	45.8	36.6	46.7	43.9	<u>47.6</u>	44.3	41.6	41.9	-	-
39.0	-	25.2	23.2	25.0	32.9	24.1	33.4	31.0	34.1	31.4	<u>34.6</u>	31.3	-	-
46.0	-	-	14.2	15.8	23.3	15.3	23.7	21.3	24.6	21.7	25.0	21.7	-	-
52.0	-	-	9.0	10.7	17.8	10.3	18.3	16.0	19.1	16.3	19.6	16.3	-	-
59.0	-	-	-	5.9	13.2	5.1	13.7	11.5	14.3	11.7	15.0	11.7	-	-
65.0	-	-	-	2.7	10.4	-	10.8	8.6	11.5	8.8	11.9	8.8	-	-
72.0	-	-	-	-	-	-	8.2	5.3	8.6	5.5	8.8	5.5	-	-
79.0	-	-	-	-	-	-	5.8	3.0	6.3	3.2	6.7	3.2	-	-
85.0	-	-	-	-	-	-	-	4.7	-	4.9	-	-	-	-
92.0	-	-	-	-	-	-	-	2.8	-	3.2	-	-	-	-

Boom extension sequence														%	
Tele 1	0	45	90	68	0	90	0	60	0	75	0	90	100	0	90
Tele 2	0	0	0	68	45	90	60	60	80	75	100	90	100	0	0
Tele 3	0	0	0	0	45	0	60	60	80	75	100	90	100	0	0
Tele 4	0	0	0	0	45	0	60	60	80	75	100	90	100	0	0

*) Tele 1 pinned

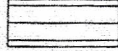

Duties above 220,000 lb with heavy-duty attachment only.

Working range main boom extension

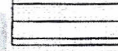



Lifting capacities main boom extension in 1,000 lb

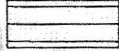

Main boom: 164 ft

97,000 lb   360° 85%

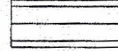

Radius ft	Lattice-extension					
	33.0 ft			55.5 ft		
	0°	20°	40°	0°	20°	40°
	1,000 lb			1,000 lb		
39.0	24.9	-	-	-	-	-
46.0	24.4	19.8	-	18.7	-	-
52.0	24.0	18.4	-	18.5	-	-
59.0	23.1	15.6	16.0	17.4	11.9	-
65.0	22.3	15.4	15.4	16.8	11.5	-
72.0	21.4	14.3	15.2	16.1	11.0	8.6
79.0	20.4	13.2	13.8	15.1	11.7	8.1
85.0	19.2	12.5	12.8	14.1	10.1	7.9
92.0	18.2	11.8	11.6	13.6	9.6	7.7
98.0	17.2	11.2	10.8	13.0	9.2	7.5
105.0	16.3	10.8	10.1	12.5	8.8	7.2
111.0	15.5	9.9	9.7	11.7	8.6	7.0
118.0	14.5	9.4	9.0	11.2	7.9	6.8
124.0	13.7	9.0	8.6	10.8	7.5	6.4
131.0	12.3	8.1	7.9	10.1	7.2	6.1
138.0	10.7	7.7	7.0	9.4	6.8	5.9
144.0	9.3	7.2	6.2	9.0	6.2	5.7
151.0	7.9	6.8	5.5	8.5	5.7	5.2
157.0	6.9	6.2	-	7.9	5.3	5.0
164.0	5.7	5.7	-	7.4	4.4	4.4
170.0	4.9	4.9	-	6.4	4.0	4.0
177.0	3.7	3.9	-	5.5	3.5	-
184.0	-	-	-	4.8	-	-
190.0	-	-	-	4.0	-	-

59,500 lb   360° 85%

Radius ft	Lattice-extension					
	33.0 ft			55.5 ft		
	0°	20°	40°	0°	20°	40°
	1,000 lb			1,000 lb		
39.0	24.9	-	-	-	-	-
46.0	24.4	19.8	-	18.7	-	-
52.0	24.0	18.4	-	18.5	-	-
59.0	23.1	15.6	16.0	17.4	11.9	-
65.0	22.3	15.4	15.4	16.8	11.5	-
72.0	21.4	14.3	15.2	16.1	11.0	8.6
79.0	20.4	13.2	13.8	15.1	10.7	8.1
85.0	19.2	12.5	12.8	14.5	10.1	7.9
92.0	16.9	11.8	11.6	13.6	9.6	7.7
98.0	14.5	11.2	10.8	13.0	9.2	7.5
105.0	11.6	10.8	10.1	12.5	8.8	7.2
111.0	9.8	9.9	9.7	11.7	8.6	7.0
118.0	7.9	9.2	9.0	9.9	7.9	6.8
124.0	6.3	7.6	8.0	8.3	7.5	6.4
131.0	5.1	6.0	6.4	6.8	7.2	6.1
138.0	3.7	4.3	5.0	5.4	6.8	5.9
144.0	2.4	3.3	3.8	4.4	6.0	5.7
151.0	-	2.1	2.4	3.5	4.8	5.2
157.0	-	-	-	2.5	3.8	4.2
164.0	-	-	-	-	2.6	3.3
170.0	-	-	-	-	-	2.3

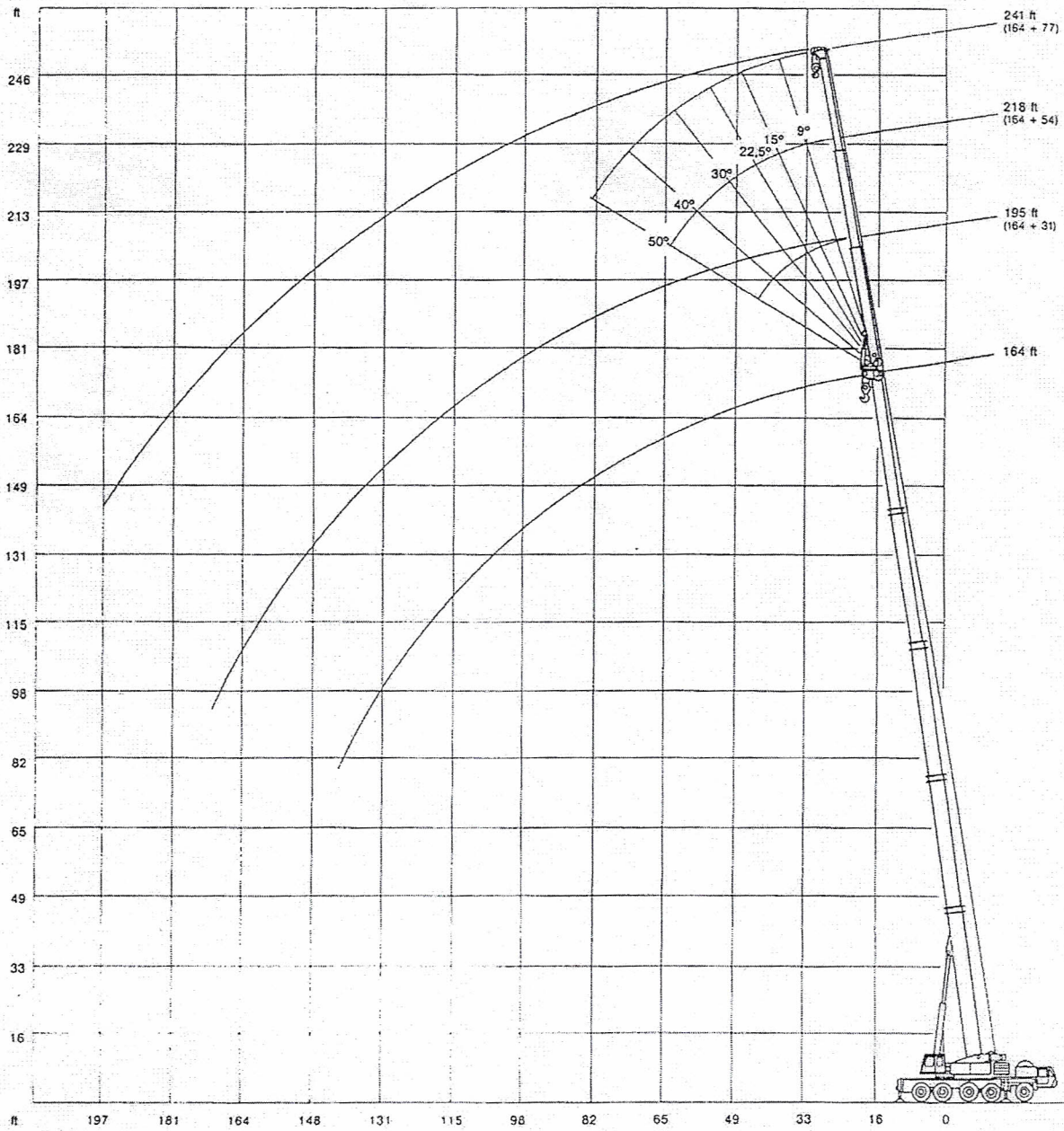
42,000 lb   360° 85%

Radius ft	Lattice-extension					
	33.0 ft			55.5 ft		
	0°	20°	40°	0°	20°	40°
	1,000 lb			1,000 lb		
39.0	24.9	-	-	-	-	-
46.0	24.4	19.8	-	18.7	-	-
52.0	24.0	18.4	-	18.5	-	-
59.0	23.1	15.6	16.0	17.4	11.9	-
65.0	22.3	15.4	15.4	16.8	11.5	-
72.0	21.4	14.3	15.2	16.1	11.0	8.6
79.0	17.2	13.2	13.8	15.1	10.7	8.1
85.0	14.4	12.5	12.8	14.5	10.1	7.9
92.0	11.4	11.8	11.6	12.9	9.6	7.7
98.0	9.4	10.8	10.8	10.9	9.2	7.5
105.0	7.0	8.8	9.6	9.0	8.8	7.2
111.0	5.6	7.0	7.6	7.4	8.6	7.0
118.0	3.7	5.1	5.7	5.7	7.9	6.8
124.0	2.5	3.6	4.3	4.5	6.3	6.4
131.0	-	2.2	2.7	3.3	5.1	6.1
138.0	-	-	-	2.1	3.7	4.8
144.0	-	-	-	-	2.4	3.6
151.0	-	-	-	-	-	2.4

24,200 t   360° 85%

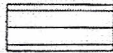

Radius ft	Lattice-extension					
	33.0 ft			55.5 ft		
	0°	20°	40°	0°	20°	40°
	1,000 lb			1,000 lb		
39.0	24.9	-	-	-	-	-
46.0	24.4	19.8	-	18.7	-	-
52.0	24.0	18.4	-	18.5	-	-
59.0	22.5	15.6	16.0	17.4	11.9	-
65.0	17.8	15.4	15.4	16.8	11.5	-
72.0	13.7	14.3	15.2	14.8	11.0	8.6
79.0	10.6	12.8	13.8	11.5	10.7	8.1
85.0	8.0	10.2	11.9	9.3	10.1	7.9
92.0	5.9	7.6	9.4	7.2	9.6	7.7
98.0	4.0	5.8	7.2	5.6	8.2	7.5
105.0	2.4	3.9	5.0	3.9	6.3	7.2
111.0	-	2.5	3.4	2.5	5.1	7.0
118.0	-	-	-	-	3.5	5.5
124.0	-	-	-	-	2.5	4.1
131.0	-	-	-	-	-	2.6

Working range hydraulic fly jib

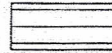



Lifting capacities hydraulic fly jib in 1,000 lb

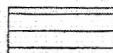

Main boom: 164 ft

97,000 lb   360° 75%

Radius ft	Fly jib						
	31.0 ft						
	2.5°	9.0°	15.0°	22.5°	30.0°	40.0°	50.0°
	1,000 lb						
46	16.5	16.5	-	-	-	-	-
52	15.1	15.1	15.0	15.0	15.0	-	-
59	13.6	13.6	13.6	13.6	13.6	13.6	13.6
65	12.6	12.6	12.6	12.6	12.6	12.6	12.6
72	11.4	11.4	11.4	11.4	11.4	11.4	11.4
79	10.5	10.5	10.5	10.5	10.5	10.5	10.5
85	9.9	9.9	9.9	9.9	9.9	9.9	9.9
92	9.0	9.0	9.0	9.0	9.0	9.0	9.0
98	8.4	8.4	8.4	8.4	8.4	8.4	8.4
105	7.7	7.7	7.7	7.7	7.7	7.7	7.7
111	7.1	7.1	7.1	6.9	6.9	6.9	6.9
118	6.6	6.6	6.6	6.1	6.1	6.1	-
124	6.0	6.0	6.0	5.7	5.7	5.7	-
131	5.3	5.5	5.5	5.3	5.3	5.3	-
138	4.8	5.0	5.0	4.6	4.6	-	-
144	4.4	4.6	4.6	4.4	4.4	-	-
151	3.5	3.7	3.9	4.1	4.1	-	-
157	2.5	2.7	2.9	2.9	-	-	-
164	-	-	-	-	-	-	-
170	-	-	-	-	-	-	-
177	-	-	-	-	-	-	-

97,000 lb   360° 75%

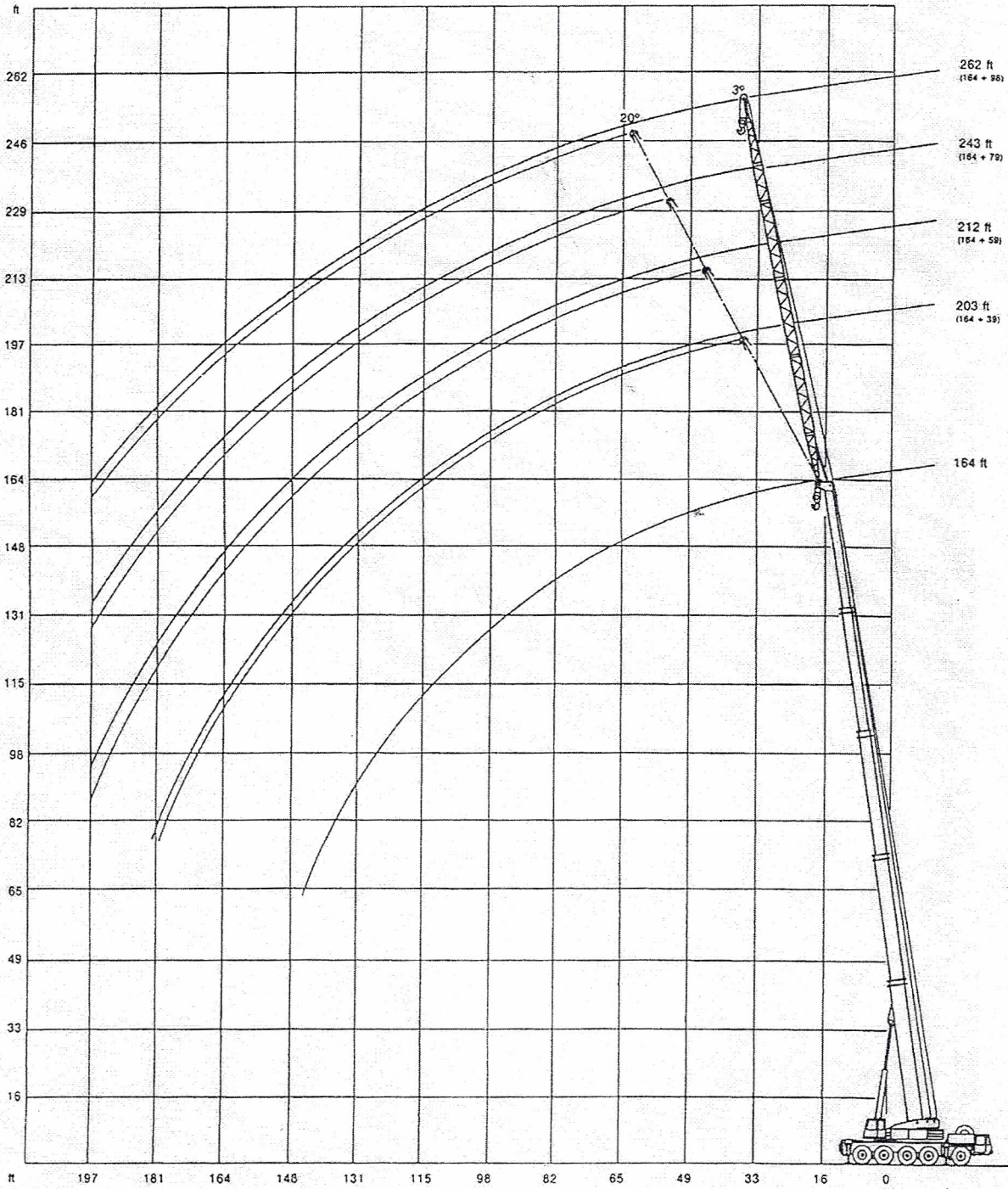
Radius ft	Fly jib						
	54.0 ft						
	2.5°	9.0°	15.0°	22.5°	30.0°	40.0°	50.0°
	1,000 lb						
46	13.2	-	-	-	-	-	-
52	12.2	12.1	-	-	-	-	-
59	11.2	11.2	11.2	-	-	-	-
65	10.6	10.6	10.6	10.6	-	-	-
72	9.9	9.9	9.9	9.9	9.9	9.0	-
79	9.2	9.2	9.2	9.2	9.2	8.5	7.4
85	8.8	8.8	8.8	8.8	8.8	8.1	7.2
92	8.1	8.1	8.1	8.1	8.1	7.7	7.2
98	7.5	7.5	7.5	7.5	7.5	7.3	7.0
105	7.0	7.0	7.0	7.0	7.0	6.8	6.8
111	6.6	6.6	6.6	6.6	6.6	6.6	6.6
118	6.1	6.1	6.1	5.9	5.9	5.9	5.9
124	5.7	5.7	5.7	5.5	5.5	5.5	5.5
131	5.0	5.0	5.0	5.0	5.0	5.0	5.0
138	4.6	4.6	4.6	4.6	4.6	4.6	-
144	4.2	4.2	4.2	4.2	4.2	4.2	-
151	3.7	3.7	3.7	3.9	3.9	3.9	-
157	3.5	3.5	3.5	3.7	3.7	-	-
164	3.3	3.3	3.3	3.3	3.3	-	-
170	2.7	2.9	2.9	2.9	2.9	-	-
177	-	2.0	2.2	2.4	-	-	-

97,000 lb   360° 75%

Radius ft	Fly jib						
	77.0 ft						
	2.5°	9.0°	15.0°	22.5°	30.0°	40.0°	50.0°
	1,000 lb						
59	9.0	9.0	-	-	-	-	-
65	8.2	8.2	8.1	-	-	-	-
72	7.7	7.7	7.7	-	-	-	-
79	7.4	7.4	7.4	6.1	-	-	-
85	7.2	7.2	7.2	5.9	5.9	-	-
92	7.0	7.0	7.0	5.5	5.5	4.8	-
98	6.6	6.6	6.6	5.3	5.3	4.6	4.1
105	6.3	6.1	6.1	5.0	5.0	4.6	4.1
111	5.9	5.7	5.7	4.8	4.8	4.4	4.1
118	5.7	5.2	5.2	4.6	4.6	4.4	4.1
124	5.3	5.0	5.0	4.4	4.4	4.2	3.9
131	4.8	4.6	4.6	4.1	4.1	3.9	3.9
138	4.3	4.3	4.3	3.9	3.9	3.7	3.7
144	3.9	3.9	3.9	3.7	3.7	3.5	3.5
151	3.7	3.7	3.7	3.3	3.3	3.0	-
157	3.5	3.5	3.5	2.8	2.8	2.6	-
164	3.0	3.0	3.0	2.6	2.6	2.6	-
170	2.8	2.8	2.8	2.6	2.6	2.4	-
177	2.6	2.6	2.6	2.4	2.4	2.2	-
184	2.6	2.4	2.4	2.1	2.1	-	-
190	2.2	2.2	2.2	1.9	1.9	-	-
197	-	-	-	1.9	1.9	-	-

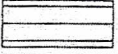
Duties for other counterweight combinations and main boom lengths on request

Working range fixed fly jib

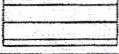


Lifting capacities fixed fly jib in 1,000 lb

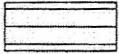
Main boom: 164 ft

97,000 lb  360° 85%

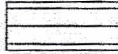
Radius	Fixed fly jib	
	39.0 ft	59.0 ft
	1,000 lb	
ft	3°	3°
33	24.2	-
39	23.8	18.7
46	22.9	17.8
52	21.9	17.2
59	20.9	16.7
65	19.9	15.9
72	18.9	15.2
79	17.6	14.5
85	16.7	13.7
92	15.6	12.9
98	14.8	12.1
105	13.8	11.4
111	13.2	10.8
118	12.3	10.1
124	11.7	9.5
131	11.0	9.0
138	10.3	8.1
144	9.7	7.7
151	9.2	7.2
157	8.0	7.0
164	7.0	6.3
170	6.0	6.1
177	4.8	5.3
184	-	4.3
190	-	3.7

59,500 lb  360° 85%

Radius	Fixed fly jib							
	39.0 ft		59.0 ft		79.0 ft		98.0 ft	
	3°	20°	3°	20°	3°	20°	3°	20°
ft	1,000 lb							
33	24.2	-	-	-	-	-	-	-
39	23.8	-	18.7	-	-	-	-	-
46	22.9	-	17.8	-	13.8	-	-	-
52	21.9	17.4	17.2	-	13.2	-	9.9	-
59	20.9	16.5	16.7	12.5	12.7	-	9.7	-
65	19.9	15.7	15.9	12.1	11.9	-	9.3	-
72	18.9	15.0	15.2	11.6	11.4	8.8	8.8	-
79	17.6	14.2	14.5	11.2	10.9	8.3	8.1	-
85	16.7	13.2	13.7	10.8	10.1	8.1	7.9	6.1
92	15.6	12.1	12.9	10.1	9.6	7.7	7.4	5.9
98	14.8	11.5	12.1	9.7	9.2	7.5	7.0	5.7
105	13.2	10.8	11.4	9.2	8.8	7.2	6.8	5.5
111	11.4	9.9	10.8	8.6	8.2	6.8	6.4	5.1
118	9.2	9.2	9.9	8.1	7.7	6.6	5.9	4.8
124	7.8	8.4	8.3	7.7	7.3	6.2	5.5	4.6
131	6.2	7.3	7.0	7.2	6.8	5.7	5.0	4.4
138	4.8	5.9	5.2	6.7	6.1	5.2	4.8	4.1
144	3.8	4.7	4.4	5.5	4.9	4.8	4.4	3.9
151	2.6	3.2	3.2	4.3	3.9	4.6	4.1	3.3
157	-	2.4	2.4	3.3	2.9	4.2	3.3	3.1
164	-	-	-	2.4	-	3.3	2.4	2.8
170	-	-	-	-	-	2.7	-	2.4
177	-	-	-	-	-	-	-	2.2

42,000 lb  360° 85%

Radius	Fixed fly jib							
	39.0 ft		59.0 ft		79.0 ft		98.0 ft	
	3°	20°	3°	20°	3°	20°	3°	20°
ft	1,000 lb							
33	24.2	-	-	-	-	-	-	-
39	23.8	-	18.7	-	-	-	-	-
46	22.9	-	17.8	-	13.8	-	-	-
52	21.9	17.4	17.2	-	13.2	-	9.9	-
59	20.9	16.5	16.7	12.5	12.7	-	9.7	-
65	19.9	15.7	15.9	12.1	11.9	-	9.3	-
72	18.9	15.0	15.2	11.6	11.4	8.8	8.8	-
79	17.5	14.2	14.5	11.2	10.9	8.3	8.1	-
85	14.6	13.2	13.7	10.8	10.1	8.1	7.9	6.1
92	11.8	12.1	11.8	10.1	9.6	7.7	7.4	5.9
98	9.8	11.5	10.0	9.7	9.2	7.5	7.0	5.7
105	7.7	9.2	7.9	9.2	8.1	7.2	6.8	5.5
111	6.1	7.4	6.5	8.6	6.9	6.8	6.4	5.1
118	4.4	5.7	4.8	7.0	5.1	6.6	5.0	4.8
124	3.2	4.3	3.8	5.4	4.0	6.2	4.0	4.6
131	-	2.9	2.4	4.2	2.9	5.1	2.9	4.4
138	-	-	-	2.8	-	3.9	-	4.1
144	-	-	-	-	-	2.9	-	3.3
151	-	-	-	-	-	-	-	2.4

24,200 lb  360° 85%

Radius	Fixed fly jib							
	39.0 ft		59.0 ft		79.0 ft		98.0 ft	
	3°	20°	3°	20°	3°	20°	3°	20°
ft	1,000 lb							
33	24.2	-	-	-	-	-	-	-
39	23.8	-	18.7	-	-	-	-	-
46	22.9	-	17.8	-	13.8	-	-	-
52	21.9	17.4	17.2	-	13.2	-	9.9	-
59	20.9	16.5	16.7	12.5	12.7	-	9.7	-
65	19.1	15.7	15.9	12.1	11.9	-	9.3	-
72	15.3	15.0	15.2	11.6	11.4	8.8	8.8	-
79	11.8	14.2	11.8	11.2	10.9	8.3	8.1	-
85	9.5	11.5	9.5	10.8	9.7	8.1	7.9	6.1
92	7.2	9.2	7.4	10.1	7.4	7.7	7.4	5.9
98	5.4	7.4	5.4	8.2	5.8	7.5	5.8	5.7
105	3.7	5.5	3.9	6.6	4.1	7.2	4.1	5.5
111	2.5	4.0	2.7	4.7	2.7	5.8	2.7	5.1
118	-	2.4	-	3.3	-	4.2	-	4.8
124	-	-	-	2.3	-	3.0	-	3.8
131	-	-	-	-	-	-	-	2.4