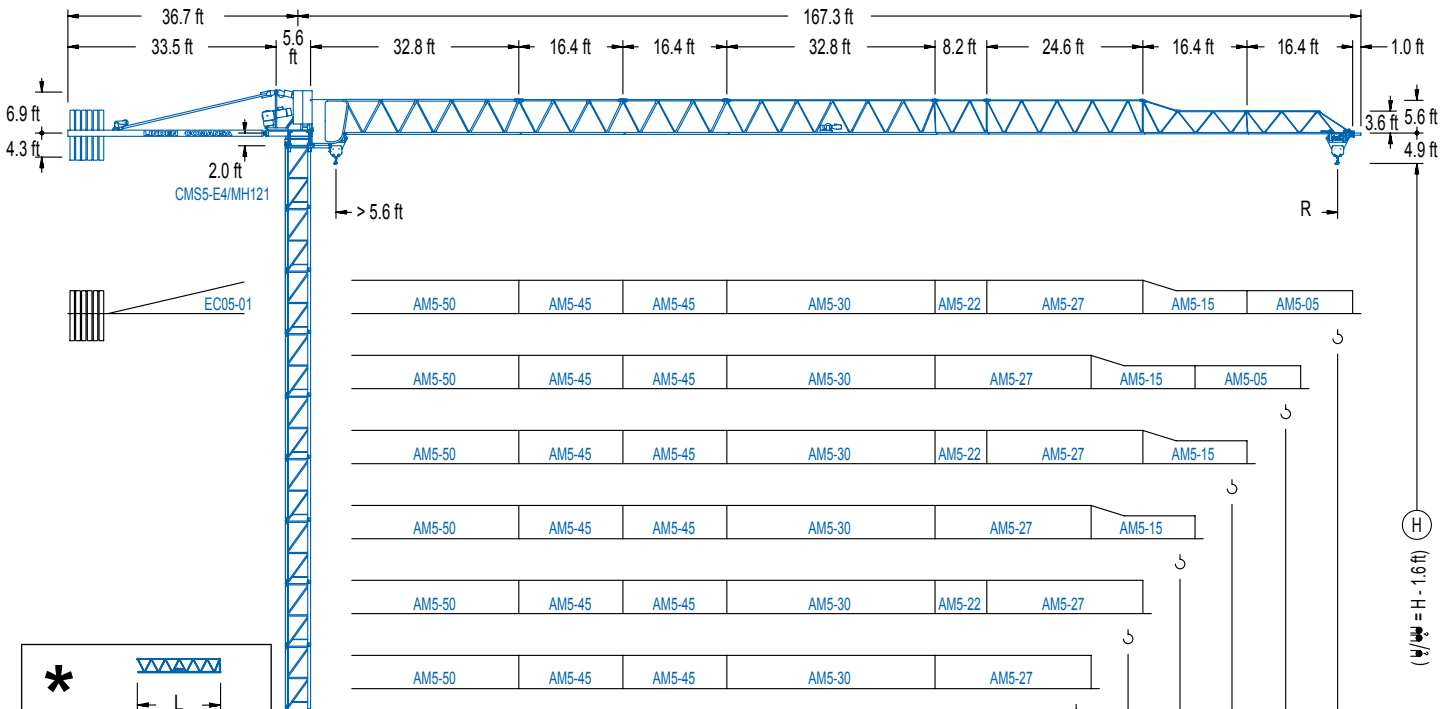
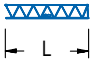


LC 500

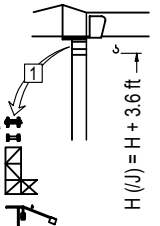
5 LC 5010

11,020 lb



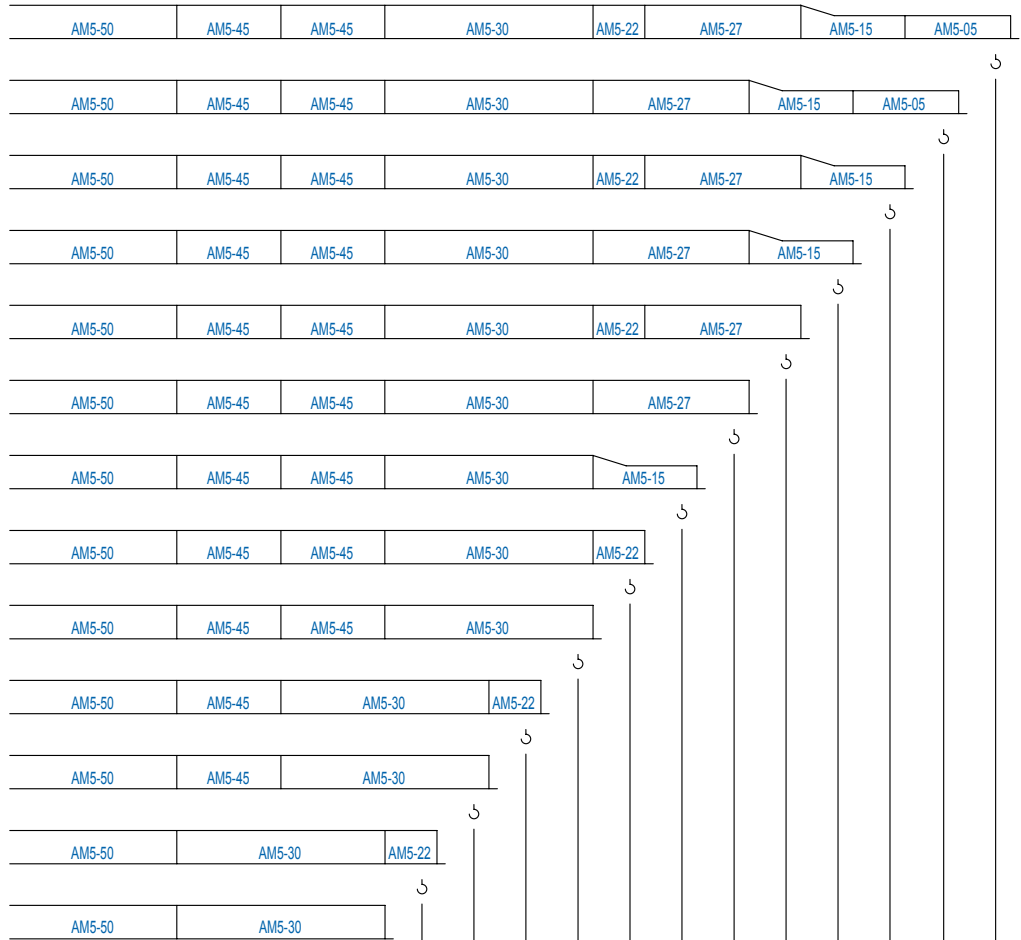
*  L

AM5-50 = AM5-55T + AM5-55D
 AM5-30 = AM5-35T + AM5-35D

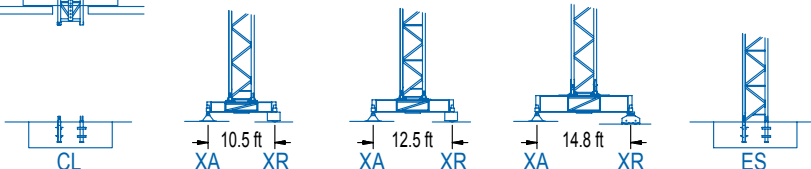
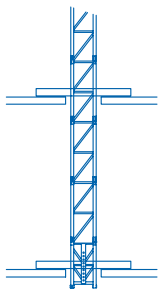
*  H (U) = H + 3.6 ft

MJ12A
 MJ12
 JT1
 P11
 GH

1 Montaje inicial / Initial erection
 Montage initial / Erstmontage
 Montaggio iniziale
 Первоначальный монтаж



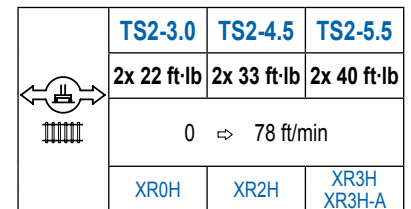
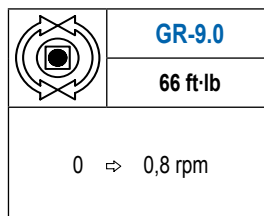
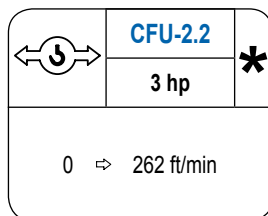
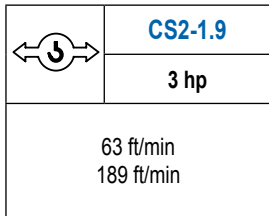
R	65.6	73.8	82.0	90.2	98.4	106.6	114.8	123.0	131.2	139.4	147.6	155.8	164.0	ft
PowerLift	5,510	5,510	5,510	5,510	5,510	5,340	4,850	4,230	3,880	3,640	2,910	2,670	2,430	lb
PowerLift	9,080	8,270	7,030	6,310	5,690	5,090	4,610	3,990	3,640	3,400	2,670	2,430	2,180	lb



CE EN 14439 (C/25)

MECANISMOS

Mechanisms / Mécanismes / Antriebe / Meccanismi / Механизмы



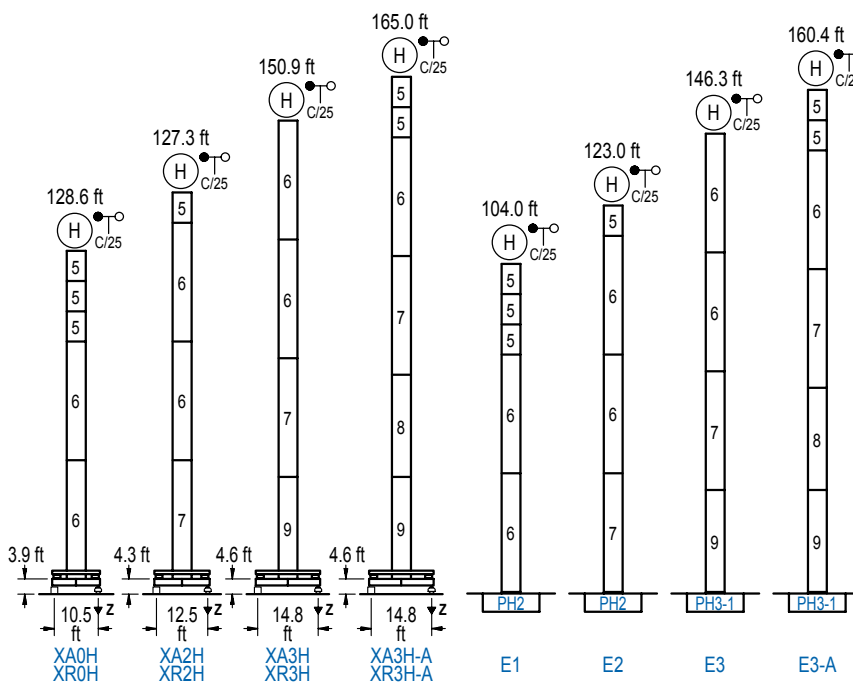
POTENCIA / POWER / PUISSANCE / LEISTUNG / POTENZA / МОЩНОСТЬ				Tensión de alimentación / Operating voltage / Tension de service / Betriebsspannung / Tensione di alimentazione / Напряжение источника питания	Generador / Generator / Générateur / Generator / Generatore / Генератор
Elevación / Hoist / Levage / Hub / Sollevamento / Тип механизма (подъем)	Carro / Trolley / Chariot / Laufkatze / Carrello / Грузовая тележка	Giro / Slewing / Rotation / Drehbewegung / Rotazione / Поворот	Traslación / Travel / Translation / Verfahrbewegung / Traslazione / Ход	480 V 3ph 60 Hz	107 kVA 90 kVA 60 kVA 48 kVA
ES3-18-12	CS2-1.9	GR-9.0	(2x) TS2-3.0		107 kVA
ES3-13-12			(2x) TS2-4.5		90 kVA
EFU2-18-12	CFU-2.2		(2x) TS2-5.5		60 kVA
EFU2-11-12					48 kVA

Opcional / Optional / En option / Kaufoption / Opzionale / Опционально
*

ALTURAS BAJO GANCHO

Heights under hook / Hauteurs sous crochet / Hakenhöhen / Altezza sotto gancio / Высота под крюком

∅ 3.9 ft



n°	Ref.	∅	h
5	MH121	3.9	9.8
6	MH124-1	3.9	38.7
7	MH124A	3.9	38.7
8	MT123A	3.9	33.1
9	MT123	3.9	33.1

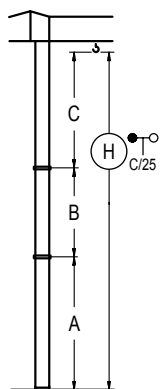
MH124-1 = 4x MH121 - 0.7 ft

	H = H + 0.7 ft
	H = H
	H = H
	H = H - 0.7 ft

Z máx.	En servicio / In operation / En service / In Betrieb / In servizio / При работе	XR0H..... 95 kip XR2H..... 93 kip XR3H..... 95 kip XR3H-A... 106 kip
	Fuera de servicio / Out of service / Hors service / Ausser Betrieb / Fuori servizio / В стационарном состоянии	XR0H..... 93 kip XR2H..... 108 kip XR3H..... 141 kip XR3H-A... 168 kip

GRÚA ARRIOSTRADA

Braced crane / Grue à entretoisement / Abgespannter Kran / Gru ancorata / Нарастиваемый кран

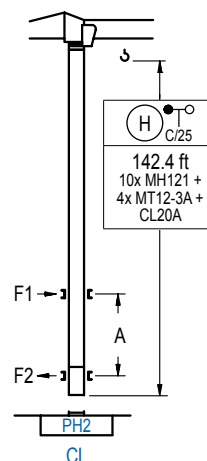


	XA0H	XA2H	XA3H	XA3H-A
A max	91.2	111.2	134.8	148.3
B max	- 68.9	- 68.9	- 68.9	- 68.9
C max	89.2	89.2	89.2	89.2
H max	180.4	249.3	200.5	269.4
	224.1	1293.0	237.5	306.4

	E1	E2	E3	E3-A
A max	87.3	107.0	130.2	143.7
B max	- 68.9	- 68.9	- 68.9	- 68.9
C max	89.2	89.2	89.2	89.2
H max	176.5	245.4	196.2	265.1
	219.5	288.4	232.9	301.8

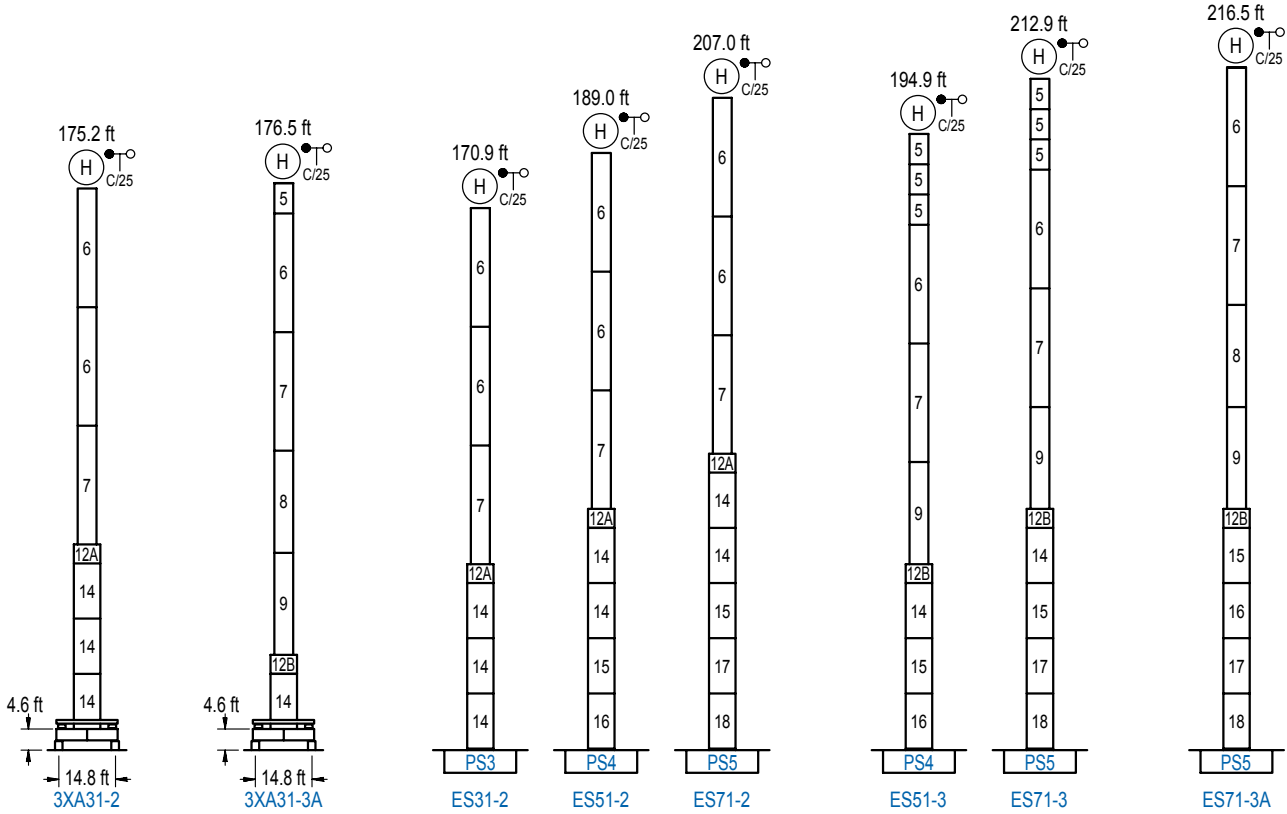
GRÚA TREPADORA

Internal climbing crane / Grue avec cage de télescopage intérieure / Kran mit klettern im Gebäude / Gru in rampante in cavedio / Монтажная келья



n°	Ref.	∅	h
5	MH121	3.9	9.8
10	MT12-3A	3.9	9.5
11	CL20A	3.9	8.5

Otras zonas de viento, alturas superiores, arriostramientos o trepado interno consultar / Other wind zones, additional hook heights, tie frames or internal climbing on request / Autres zones de vent, des hauteurs supplémentaires, entretoisements ou grues avec cage de télescopage intérieure, sur demande / Andere Windzonen, weitere Hakenhöhen, Abspannungen zum Gebäude oder Klettern im Gebäude auf Anfrage / Per zone con velocità del vento particolari, altezze superiori, ancoraggi o rampante in cavedio, consultare il fabbricante / При других ветренных зонах, при большой высоте, привязках к зданию или наращивании крана внутри здания проконсультируйтесь с нами



n°	Ref.	∅	h	n°	Ref.	∅	h	n°	Ref.	∅	h
5	MH121	3.9	9.8	12A	TMS13/PMH12	5.2	3.3	14	S13	5.2	18.0
6	MH124-1	3.9	38.7	12B	TMS13/PMH13	5.2	3.3	15	TS14	5.2	18.0
7	MH124A	3.9	38.7					16	S14	5.2	18.0
8	MT123A	3.9	33.1					17	TS15	5.2	18.0
9	MT123	3.9	33.1					18	S15	5.2	18.0
MH124-1 = 4x MH121 - 0.7 ft											

Otras zonas de viento o alturas superiores consultar / Other wind zones or additional hook heights on request / Autres zones de vent ou des hauteurs supplémentaires sur demande / Andere Windzonen oder weitere Hakenhöhen auf Anfrage / Per zone con velocità del vento particolari o altezze superiori consultare il fabbricante / При других ветренных зонах о при большой высоте проконсультируйтесь с нами