



EZ Hauler Series

# PREOPERATIONAL INSPECTION AND MAINTENANCE



EZ Hauler Series

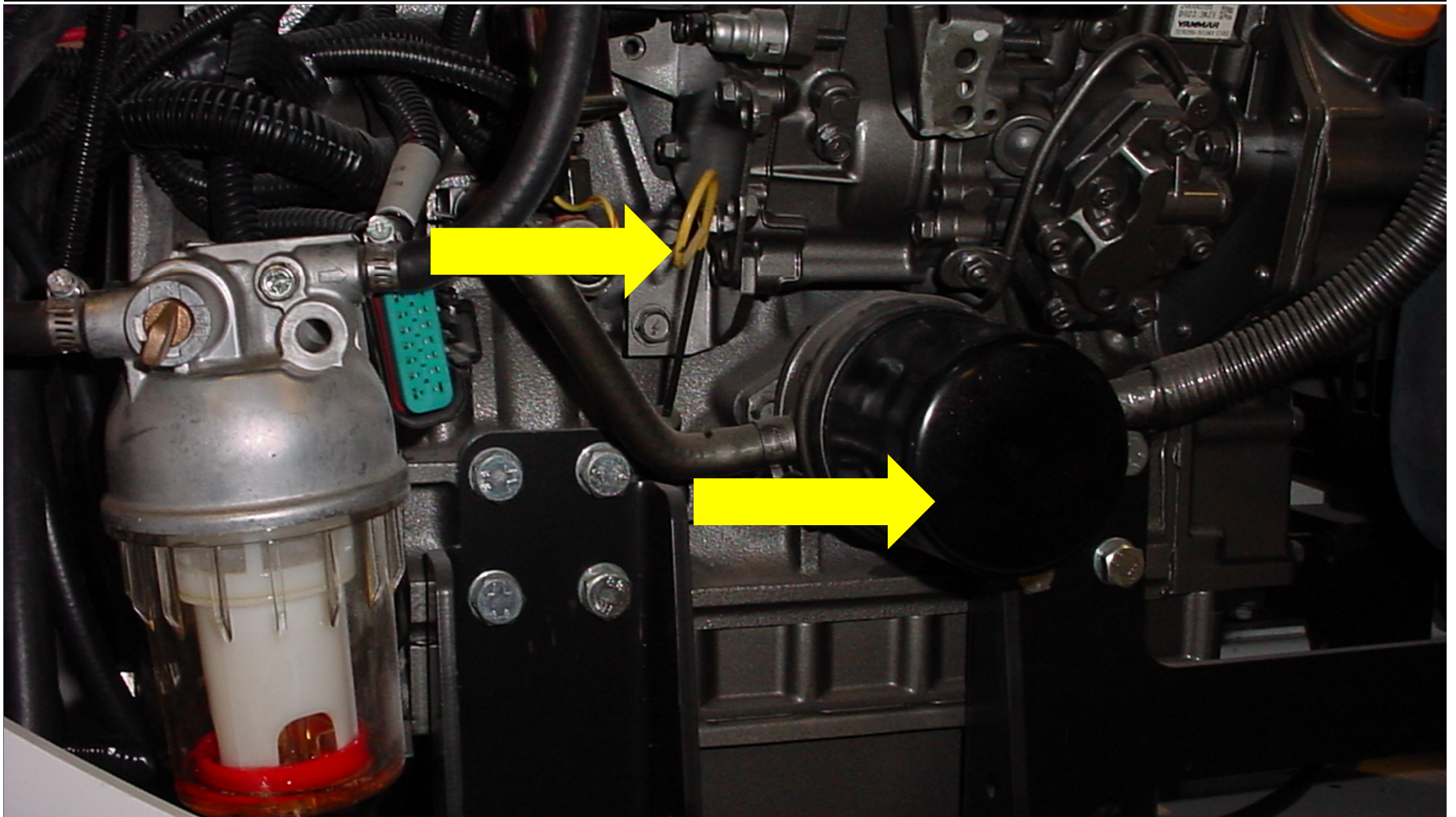
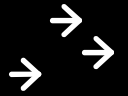
# FILTERS

## FILTERS

Locate the engine oil dipstick & filter, check oil level and note the filter change date.



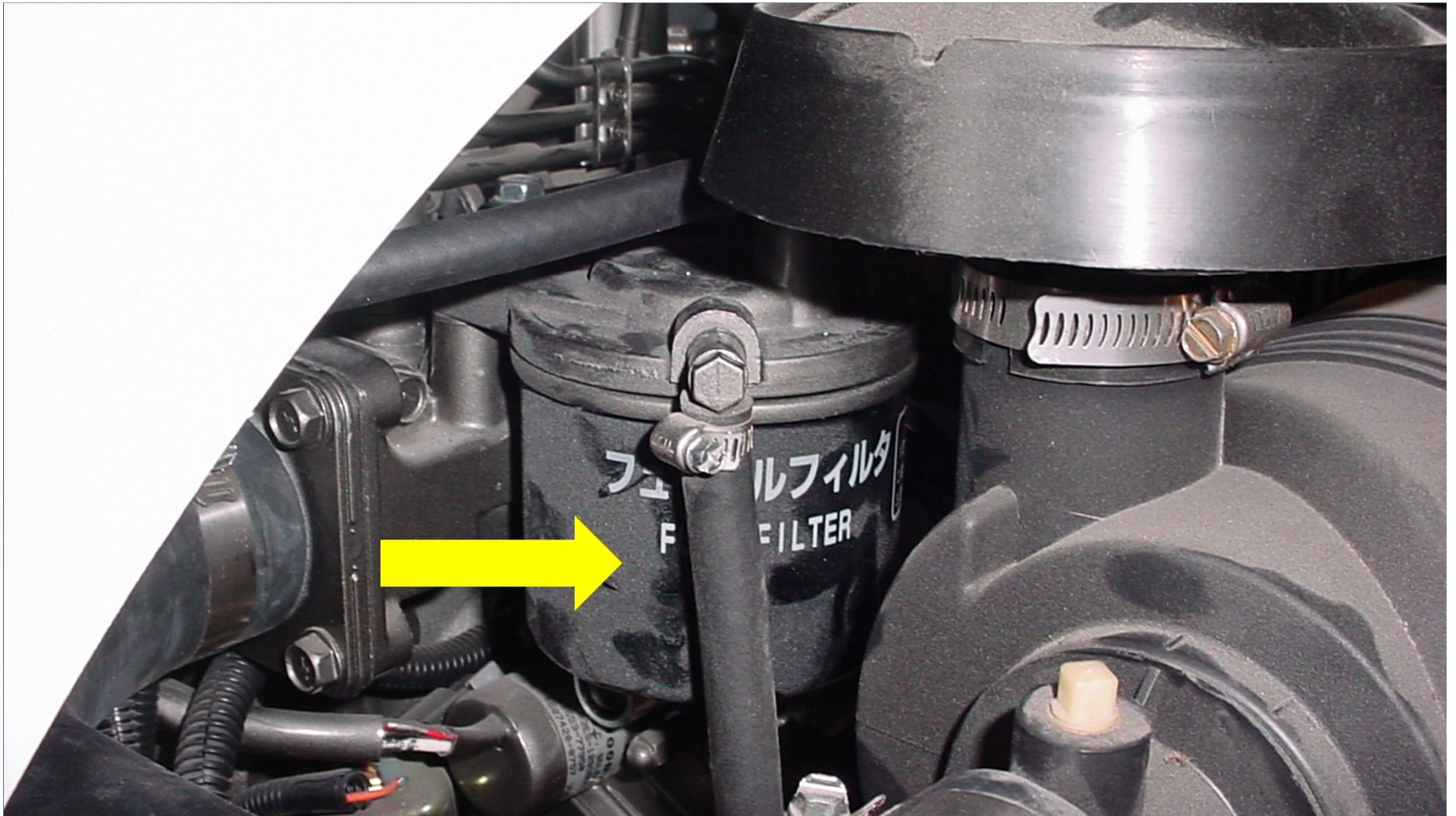
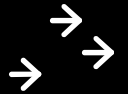
NOTE: Engine oil filter must be changed after the first 50 hours and every 200 hours thereafter.



## FILTERS

Locate the engine fuel filter and note the change date.

NOTE: Engine fuel filter must be changed after every 200 hours of use.

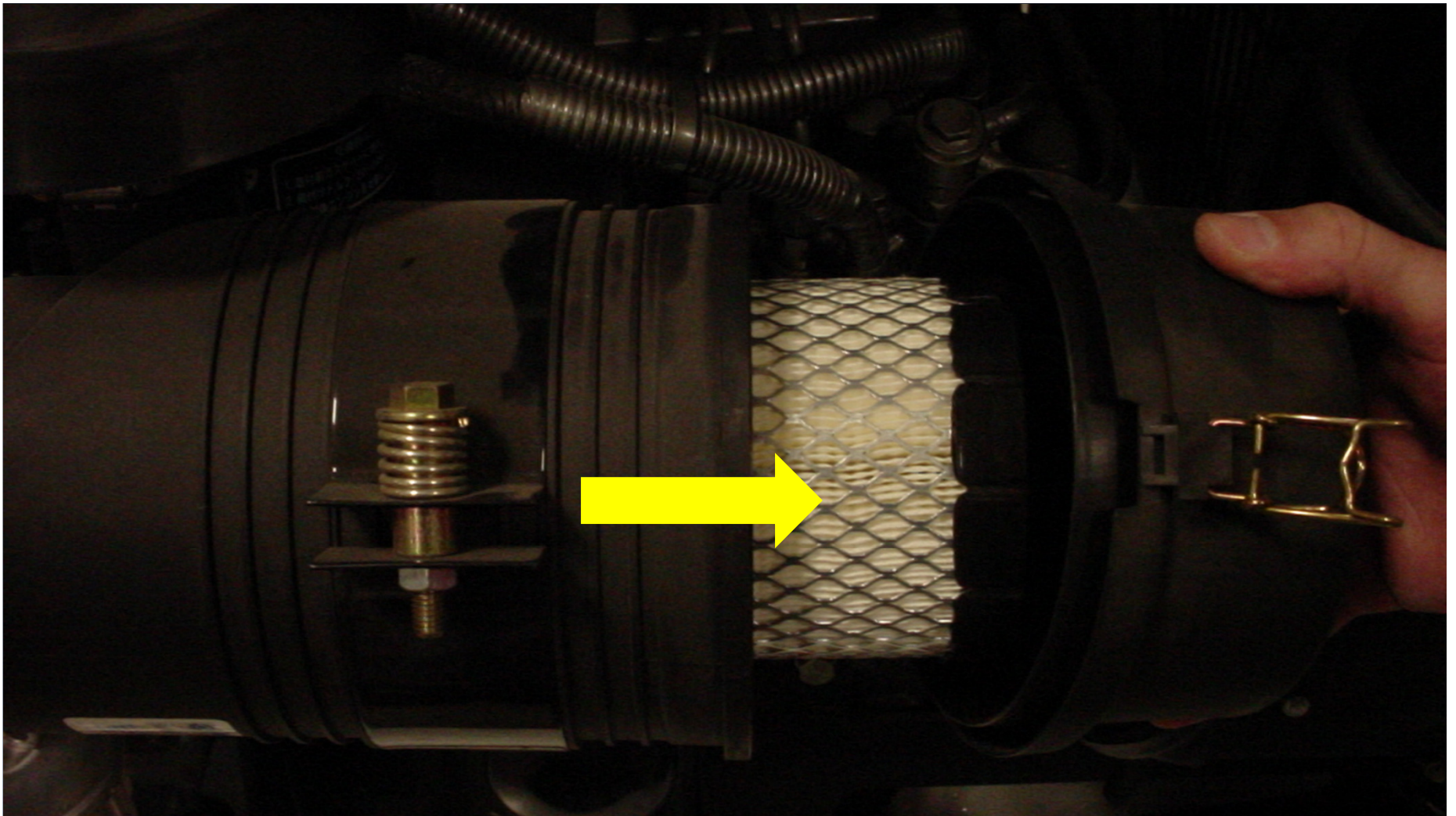
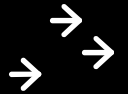


## FILTERS

Locate the engine air filter and note the change date

NOTE: Engine air filter must be changed after every 200 hours of use.

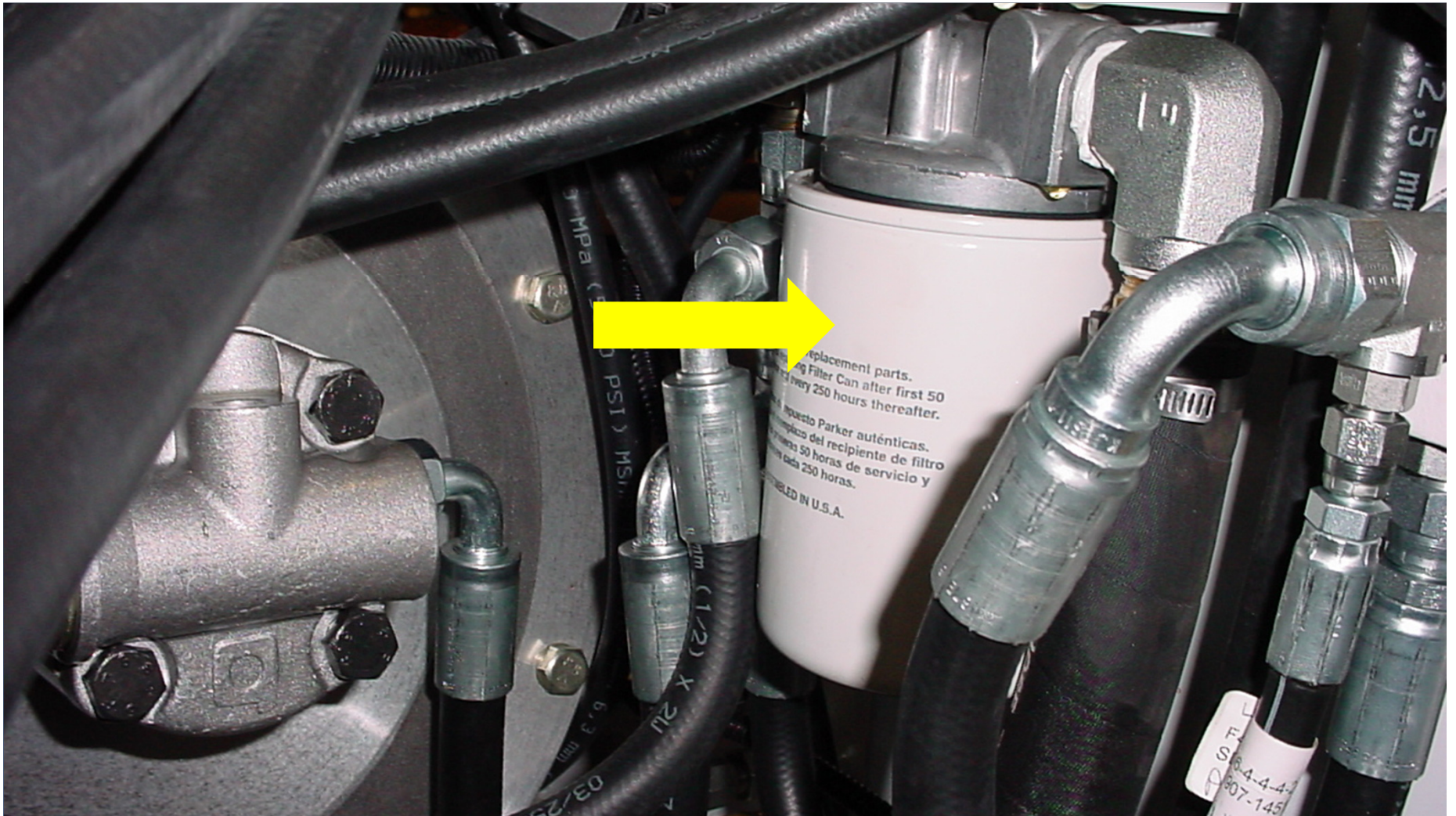
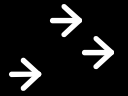
**S.D.P.**  
MANUFACTURING, INC.



## FILTERS

Locate the hydraulic fluid filter behind the rear dash panel, note the change date.

NOTE: The hydraulic fluid filter must be changed after the first 50 hours and every 200 hours thereafter.





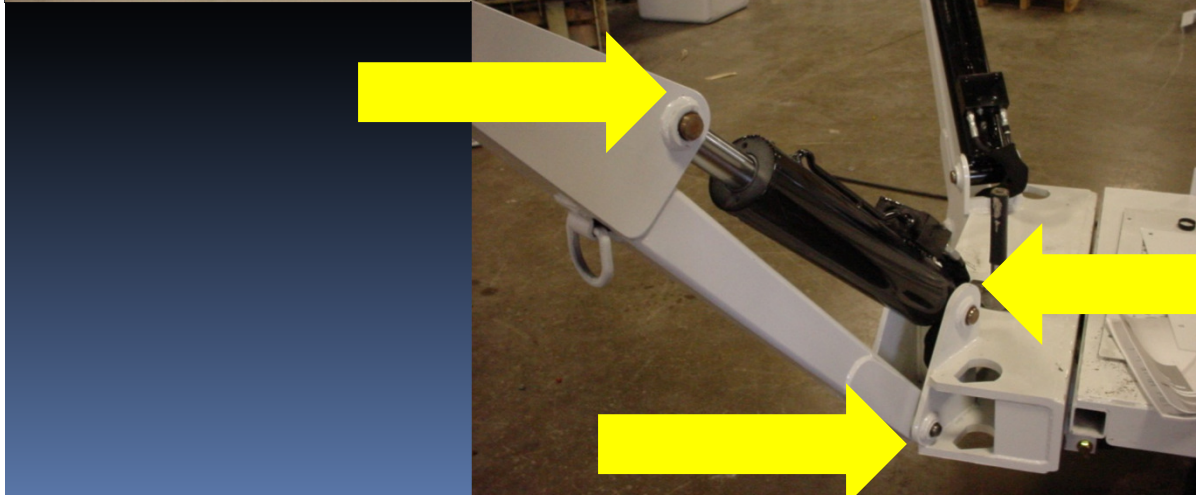
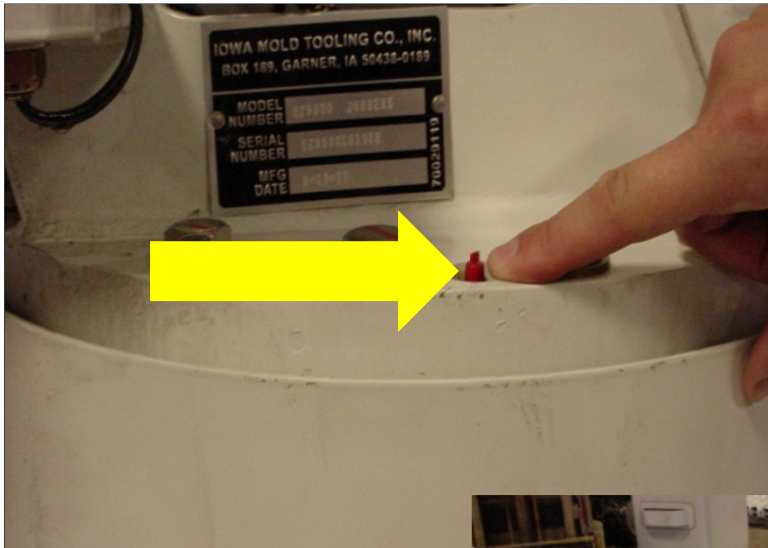
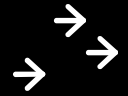
EZ Hauler Series

# GREASE POINTS

# GREASE POINTS

Locate all grease points on the crane and on the chassis.

NOTE: All grease points must be checked and greased weekly with high pressure lithium grease.







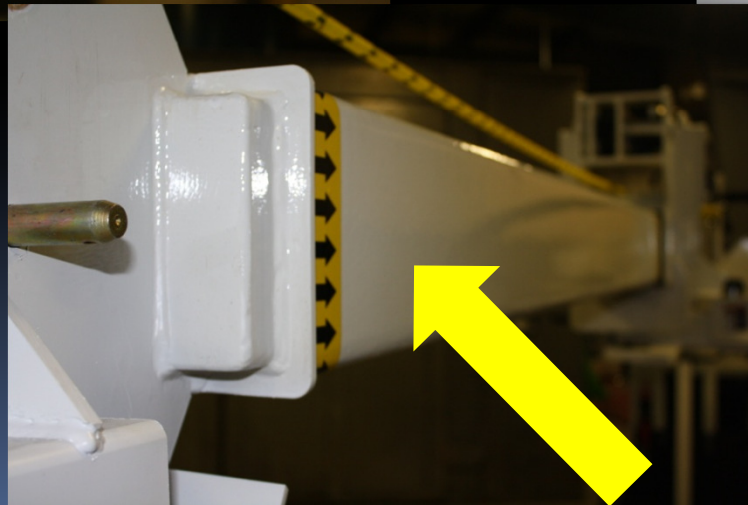
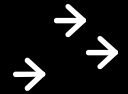
EZ Hauler Series

**FIBERGLASS BOOM &  
ACCESSORIES**

## FIBERGLASS

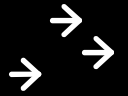
Check for stress cracks and chips on final fiberglass extension.

NOTE: Keep surface of fiberglass boom clean to assure dielectric stability.



## FIBERGLASS

Check for stress and cracks in all fiberglass accessories.





EZ Hauler Series

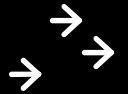
# ROPE & LIFTING STRAPS

## ROPE

Check for fraying, dirt and wear on the rope

NOTE: Never attach rope directly to object being lifted.

NOTE: Contaminants on rope can compromise the dielectric stability.

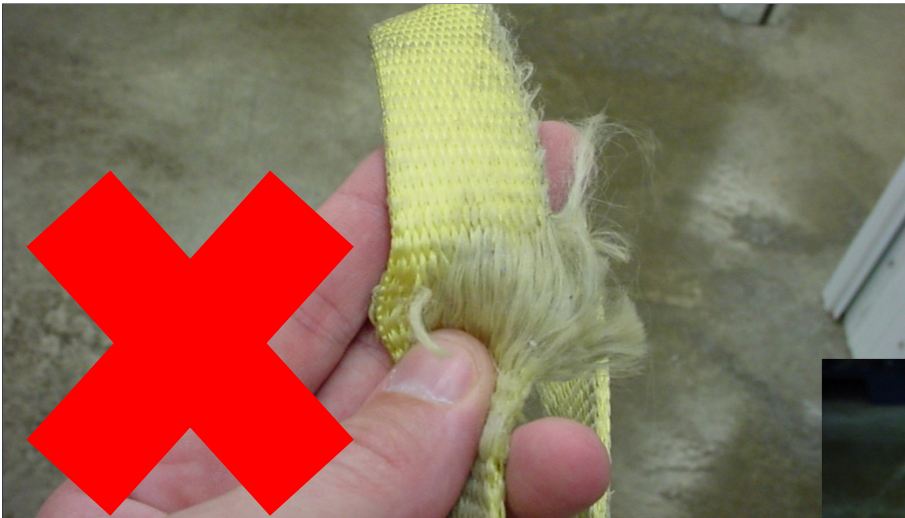
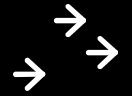


# ROPE



Check wear on all lifting straps

NOTE: Always use a lifting strap when setting poles!





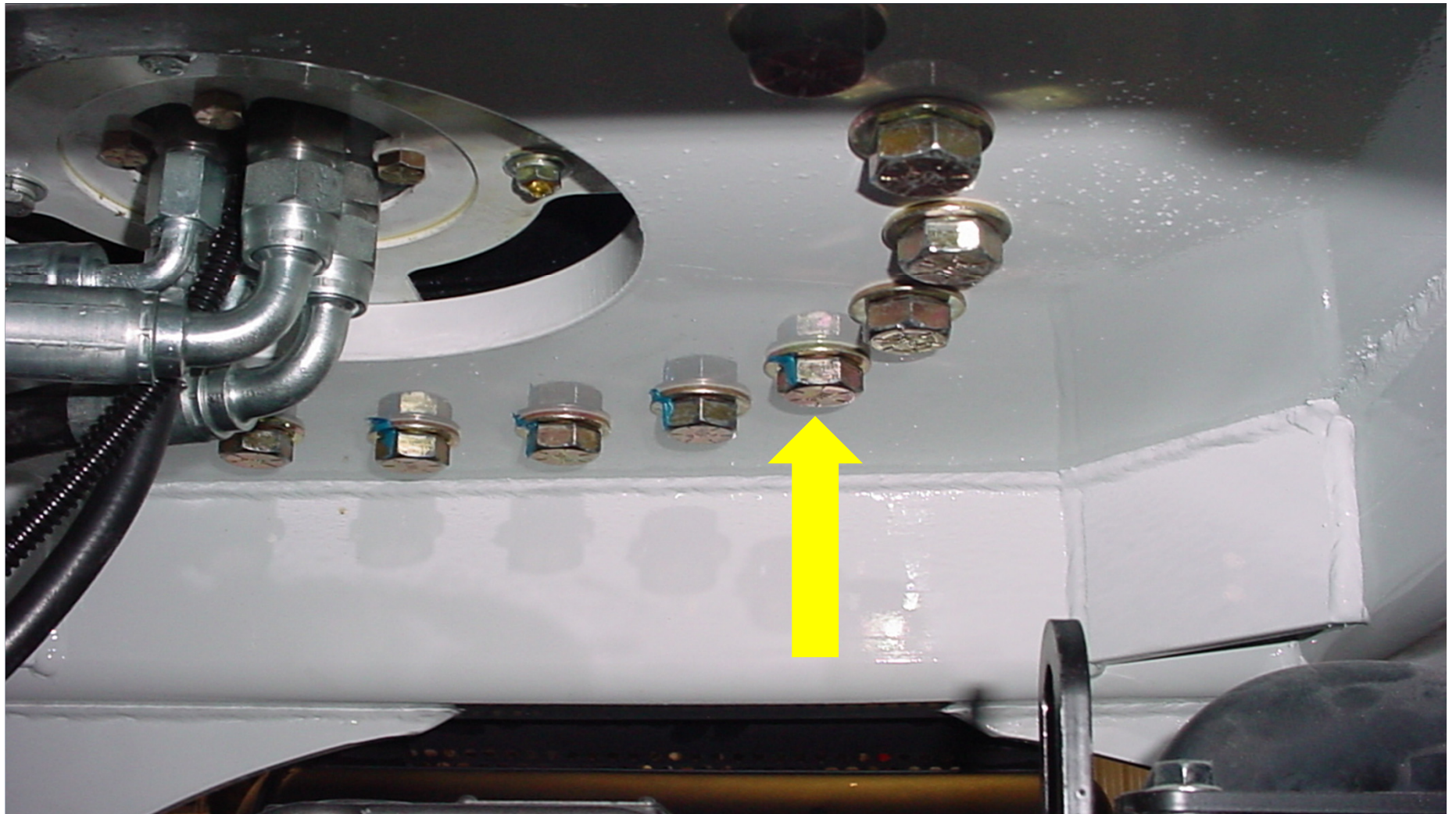
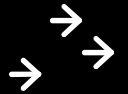
EZ Hauler Series

# CRANE & OUTRIGGER ATTACHMENT BOLTS

## BOLTS

Check all crane attachment bolts for stress, wear, and torque.

NOTE: Torque specifications for the crane attachment bolts is 160 foot pounds.

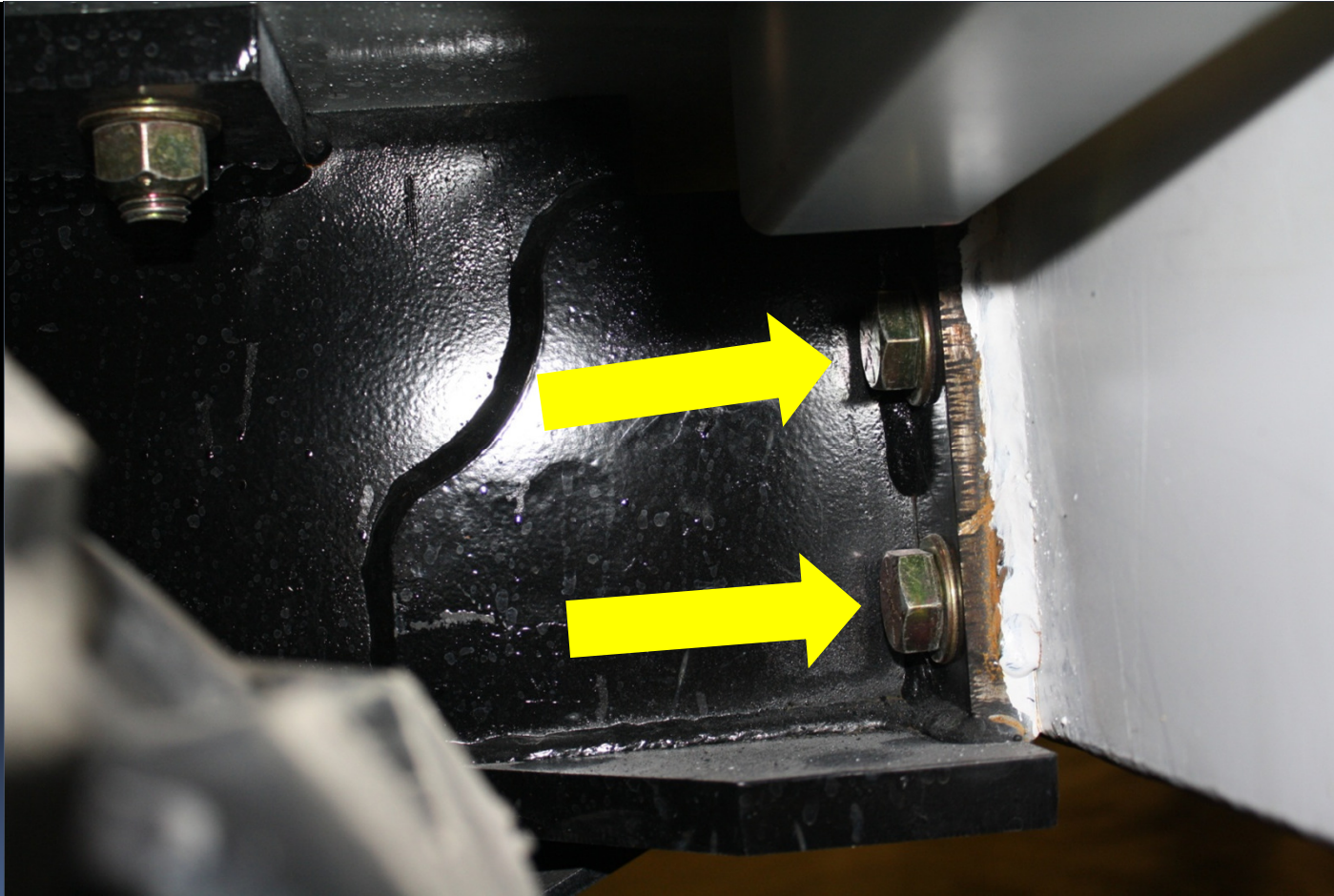
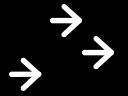




# BOLTS

Check outrigger bolts for stress and wear.

Recommend 280lbs of torque



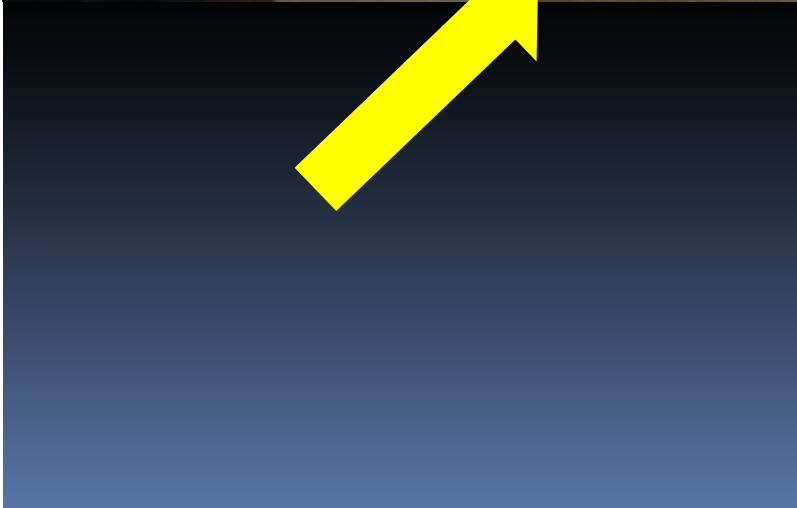
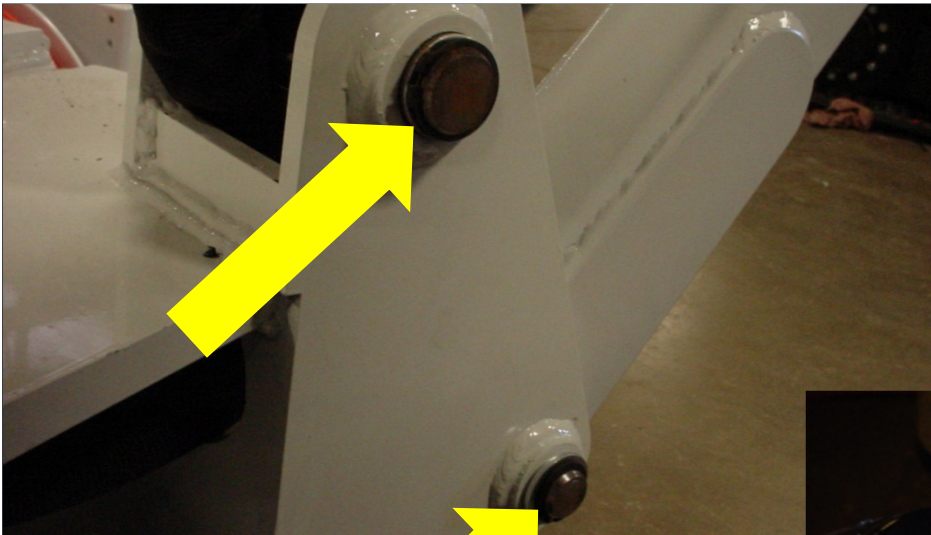
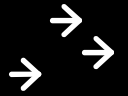


EZ Hauler Series

# OUTRIGGERS

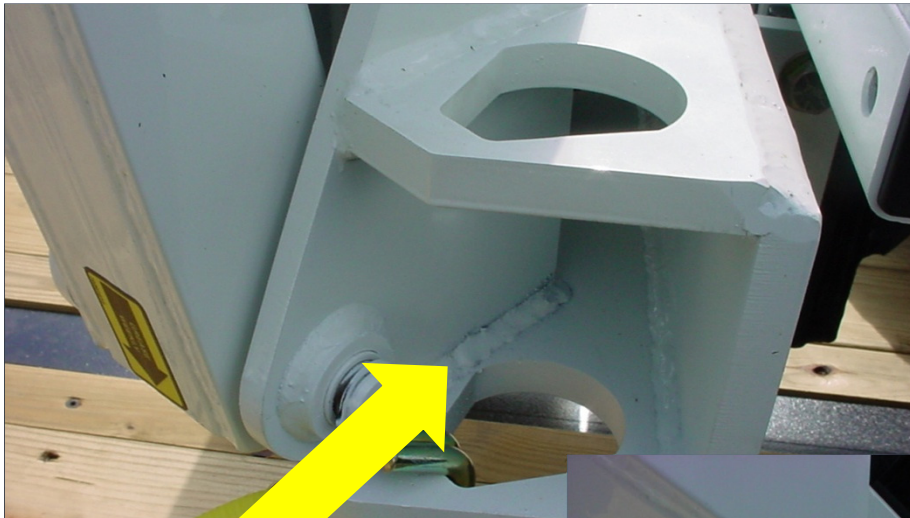
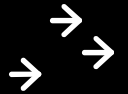
## OUTRIGGERS

Check for wear and stress on all outrigger pins and hubs.



## OUTRIGGERS

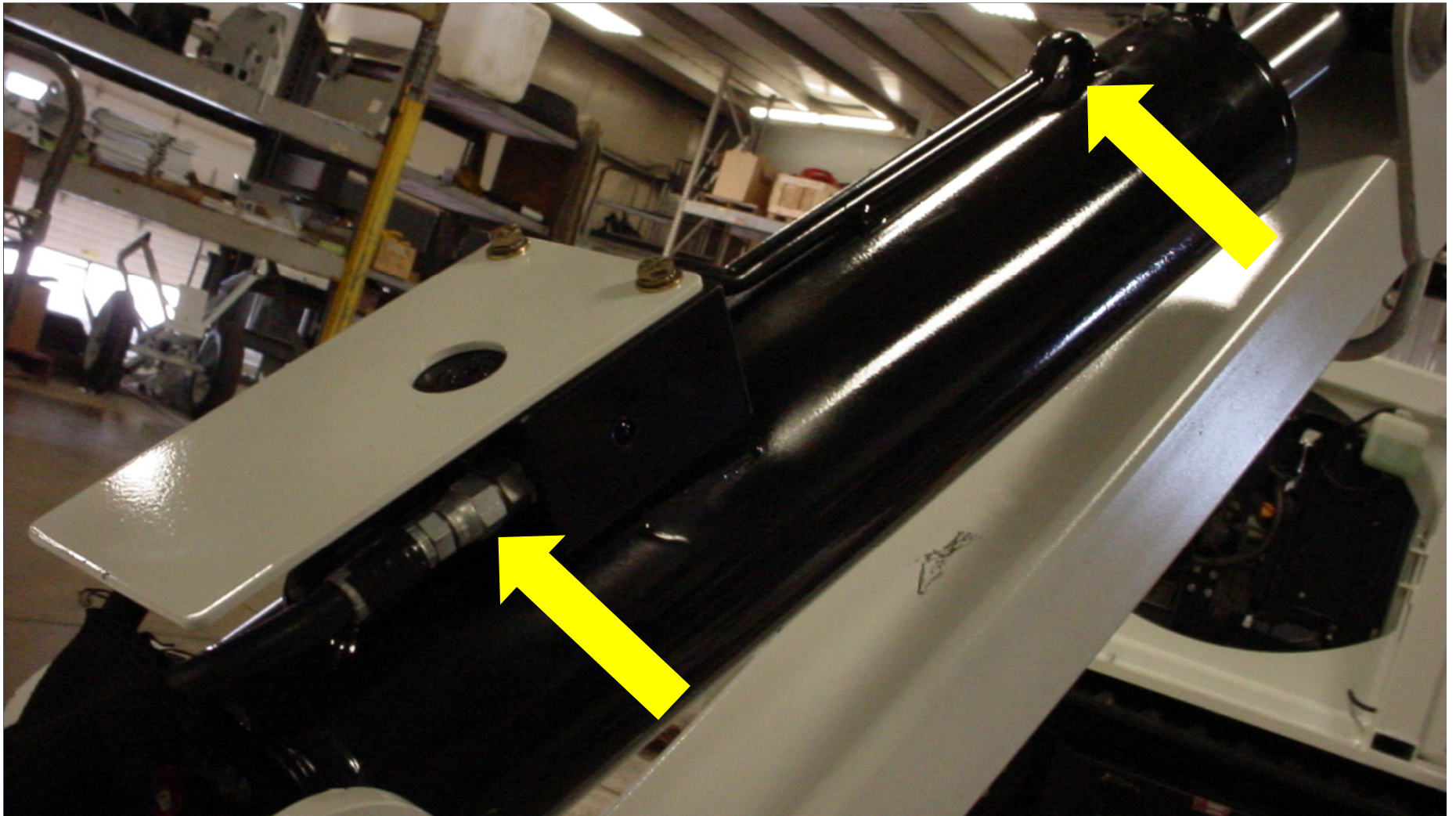
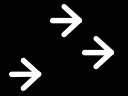
Check for stress wear on outrigger body, arms and feet.



## OUTRIGGERS

Check for leaks on outrigger hydraulic cylinder.

**S.D.P.**  
MANUFACTURING, INC.





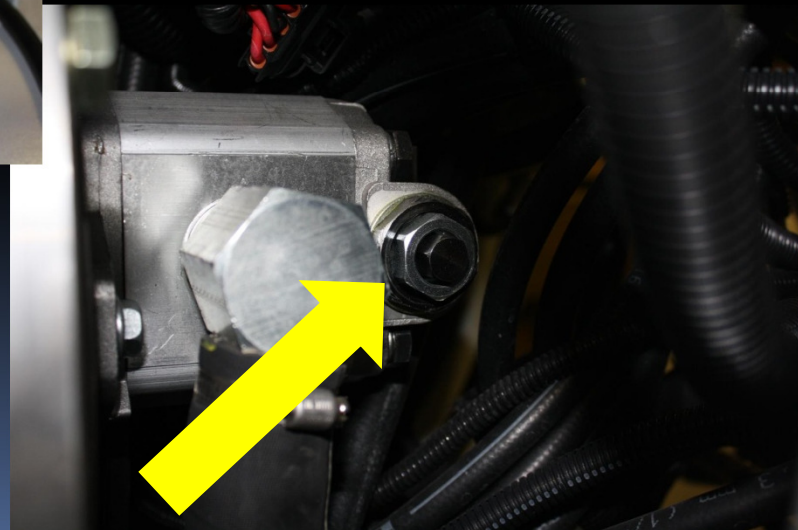
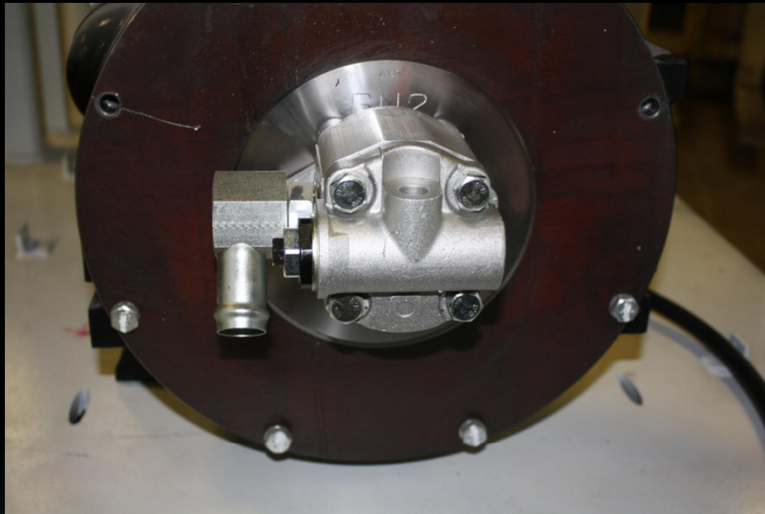
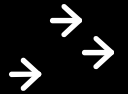
EZ Hauler Series

# HYD. PUMP & PRESSURE

## HYD. PUMP & PRESSURE

The hydraulic pump should be set at 3000psi.

The hydraulic pump is located at the rear of the engine.

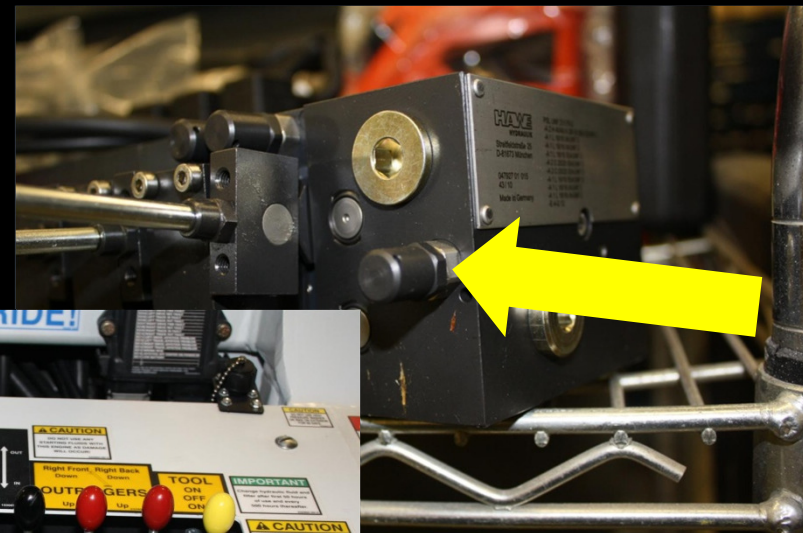
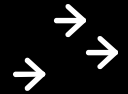


# HYD. PUMP & PRESSURE



The drive pressure should be set at 2850psi.

The drive valve pressure relief is located on the right hand side of the drive valve.



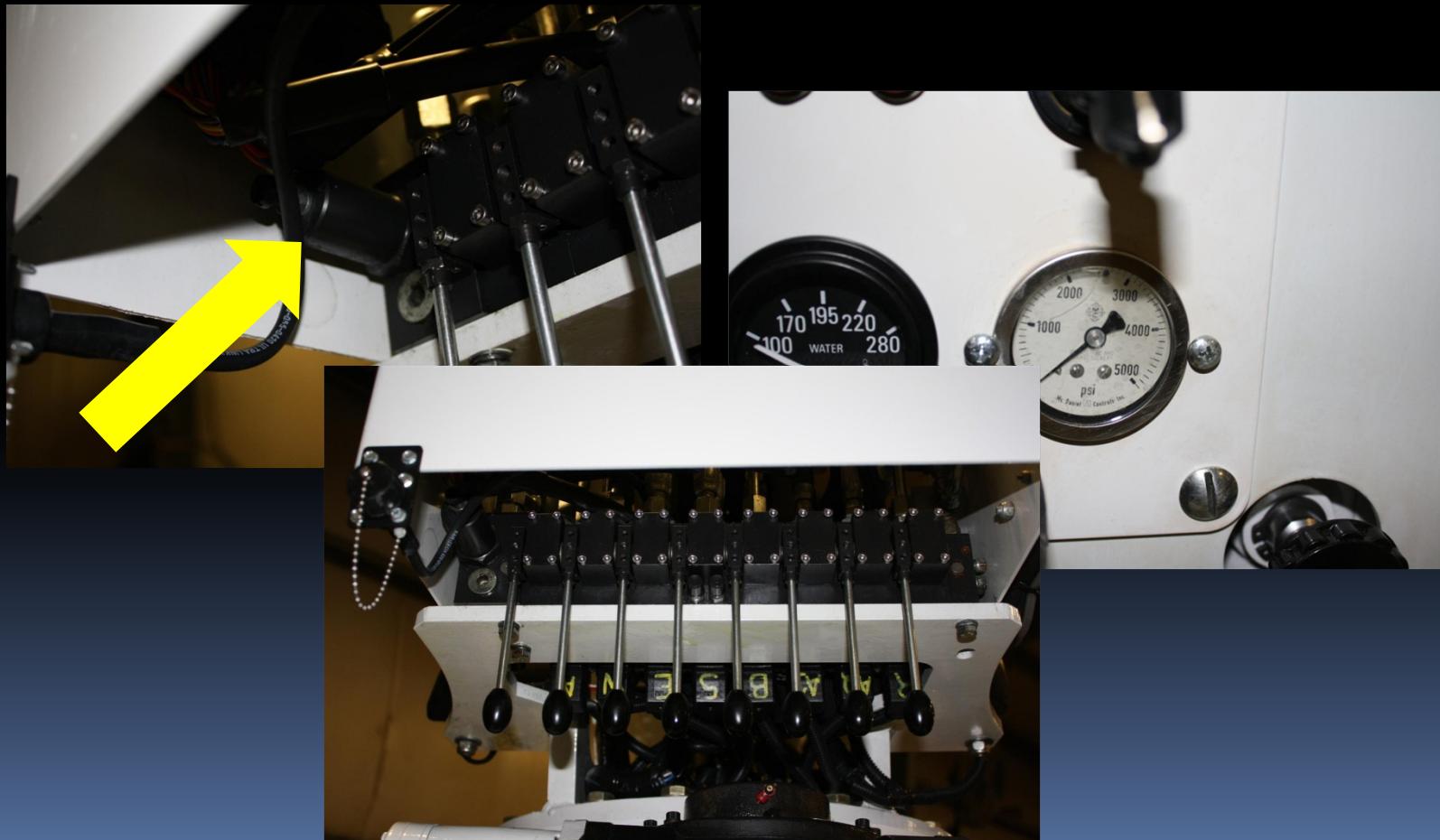
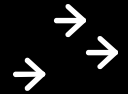


## HYD. PUMP & PRESSURE



The crane pressure should be set at 2650psi.

The crane valve pressure relief is located on the left hand side of the crane valve.





EZ Hauler Series

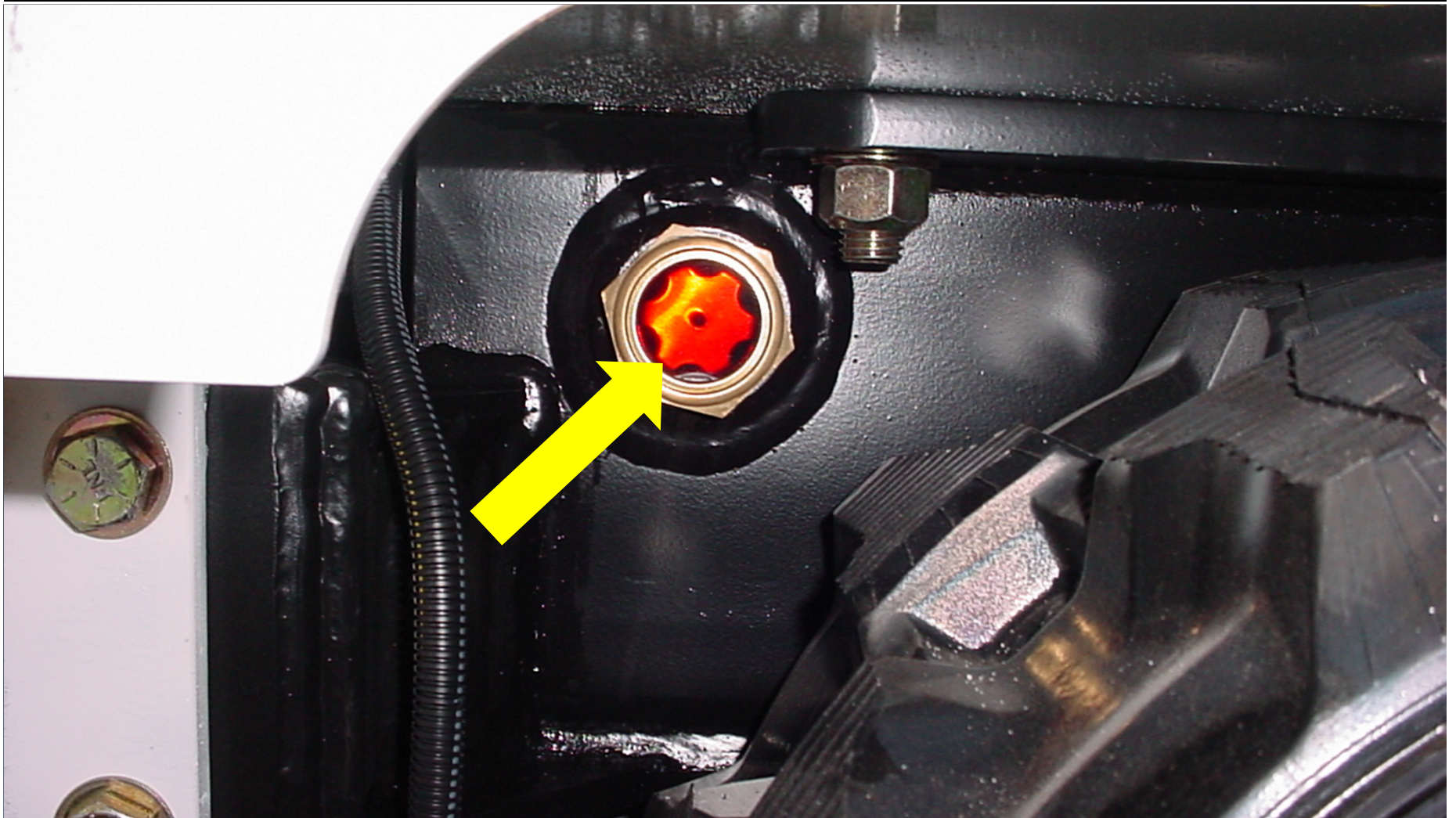
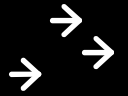
# TRACK BASE

## TRACK BASE

Check hydraulic fluid level with sight gauge.

NOTE: Use MIL SPEC 5606 or equivalent grade hydraulic oil.

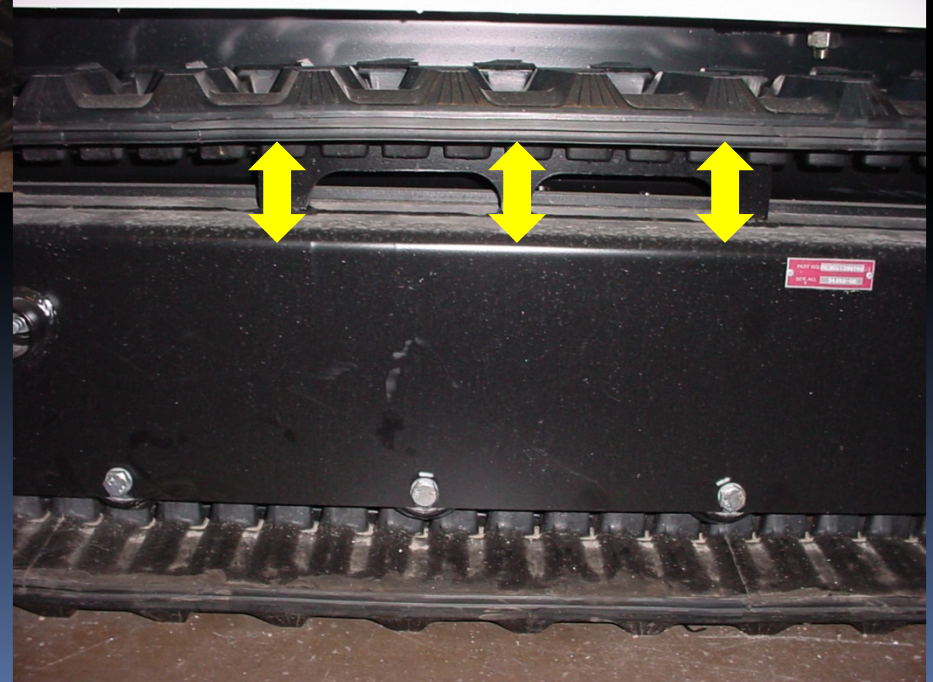
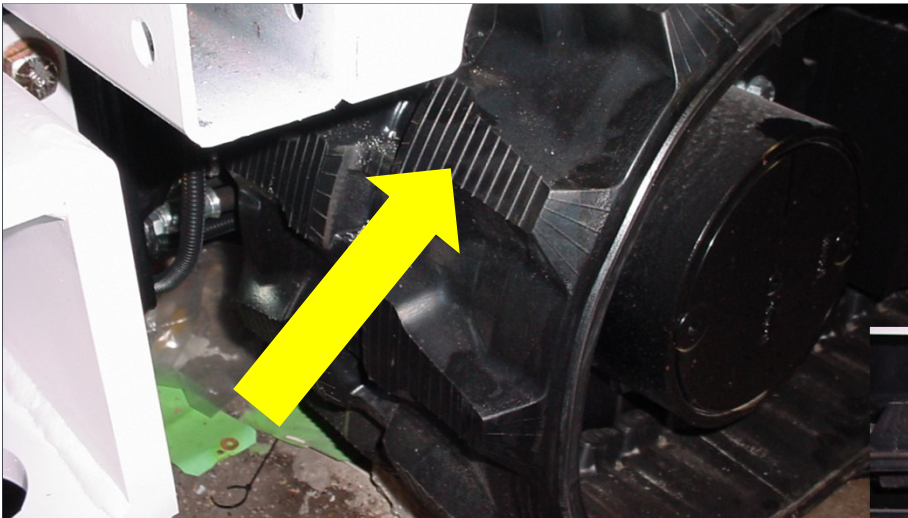
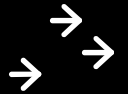
**S.D.P.**  
MANUFACTURING, INC.



## TRACK BASE

Check for track tension & wear.

NOTE: There should be only 1" of flex in track tension.





EZ Hauler Series

**REMOTE**

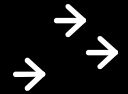
# REMOTE



Make certain the remote is fully charged.

NOTE: A complete charge can be achieved in about 1 hour and charge status will be displayed by the green LED indicator on transmitter.

NOTE: Charge will last approximately 6 hours.

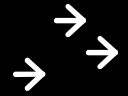


# REMOTE



Familiarize the transmitter controls.

NOTE: The E-Stop button on the transmitter acts as the on / off switch as well.

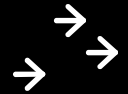


# REMOTE

Error codes will be displayed on the receiver face if failure should occur.

NOTE: The remote will shut off when an error is received to prevent any possible accidents.

NOTE: Remote transmitter will need to be turned off and then back on, to reset error.





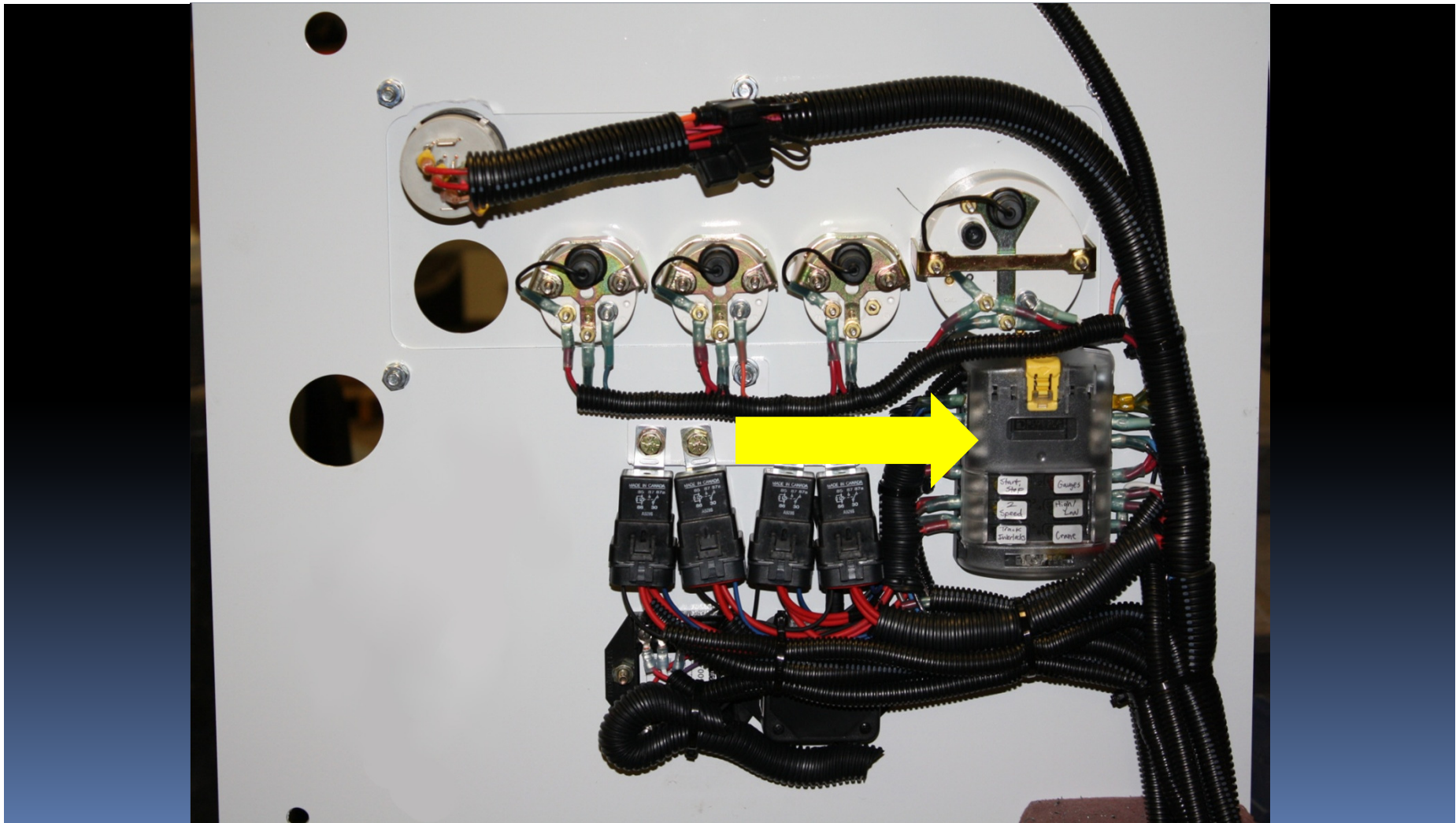
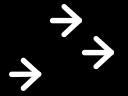


EZ Hauler Series

# FUSE PANEL

## FUSE PANEL

Fuse block is located on the inside of the rear dash panel.





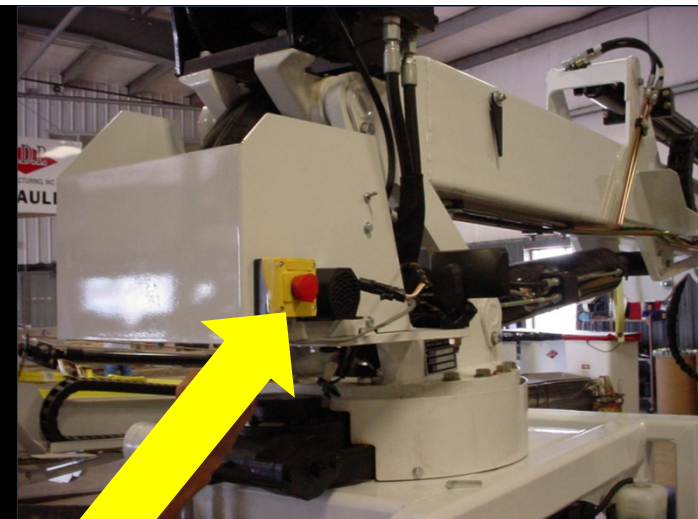
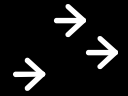
EZ Hauler Series

# EMERGENCY STOP LOCATIONS

# E-STOPS

Familiarize the locations of the emergency stops.

NOTE: All EZ Haulers have three emergency stop buttons. Two are electric and one is hydraulic.





EZ Hauler Series

# CHANGING THE BATTERY

## BATTERY CHANGE

To change the battery in the unit, you must first remove the valve attachment plate screws and set the valve forward. This will allow the room necessary to replace the battery.

