

# LT-56/62

## Telescopic Aerial Device

- ◆ Up to 67' of Working Height
- ◆ Over 27' of Side Reach
- ◆ Mounts on 17,500 lbs. GVWR Chassis - **NO CDL REQUIRED!**
- ◆ Up to 440 lbs. of Platform Capacity
- ◆ 180° Platform Rotator
- ◆ Over 6,500 lbs. of Payload



### Straight Down Outriggers

provide easy maneuverability for getting into tight spaces



### Lighting Maintenance Package

features custom compartments ideal for lights of various sizes

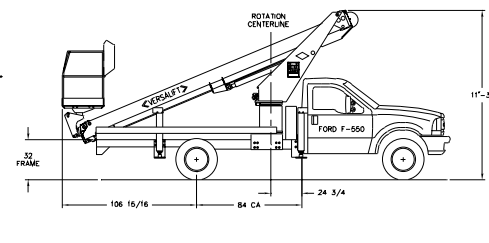
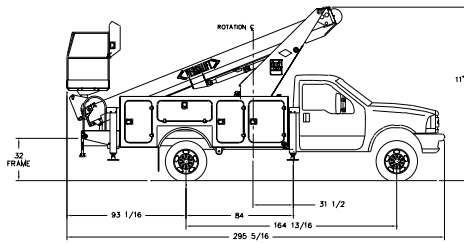


For more information on the LT-56/62,  
contact your authorized Versalift Distributor  
or call: **254-399-2100**



# LT-56/62

## Telescopic Aerial Device



### GENERAL AERIAL SPECIFICATIONS

	<b>LT-56</b>	<b>LT-62</b>
Height to Bottom of Platform	57 ft. 11 in. (17.65 m)	63 ft. 11 in. (19.48 m)
Working Height	62 ft. 11 in. (19.18 m)	68 ft. 11 in. (21.0 m)
Max. Horizontal Reach	31 ft. 0 in. (9.45 m)	31 ft. 0 in. (9.45 m)
Stowed Travel Height (approx.)	11 ft. 11 in. (3.63 m)	11 ft. 11 in. (3.63 m)
Max. Platform Capacity	440 lbs. (200 kg)	440 lbs. (200 kg)
Weight of Lift (w/o Subframe Mounting)	2,380 lbs. (1080 kg)	2,450 lbs. (1110 kg)

### BOOM ARTICULATION

Outer Boom Travel	-23° to +85°	-23° to +85°
Boom Extension	27 ft. 6 in. (8.4 m)	31 ft. 4 in. (9.6 m)
Boom Rotation	360° Continuous	360° Continuous
Platform Rotation	180°	180°

### HYDRAULIC SYSTEM

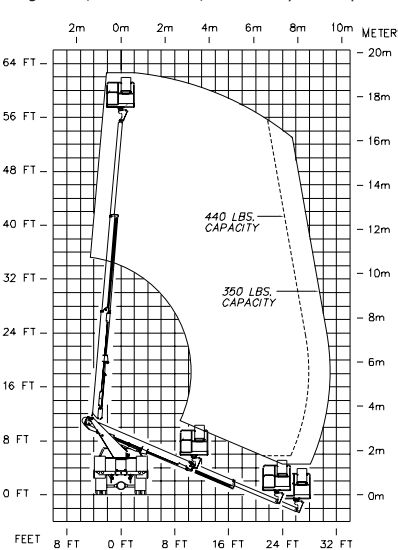
Hydraulic Operating Pressure	2,250 psi (158 kg/cm <sup>2</sup> )
Hydraulic Flow Rate	3 gpm (11.4 lpm)
Filtration	10 Micron Return 100 Mesh Suction
System Type	Open Center
Reservoir Capacity (Remote)	30 gal (113 liter)

### RECOMMENDED VEHICLE SPECIFICATIONS

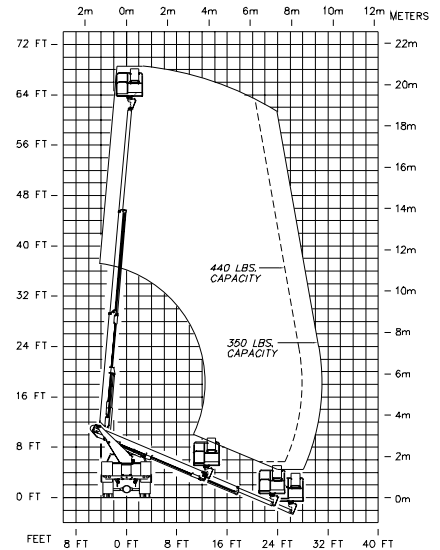
Cab-to-Rear Dimension	84 in. (2.14 m)
Frame Section Modulus	10.1 in <sup>3</sup> (166 cm <sup>3</sup> )
Frame Resisting Bending Moment	363,600 in.-lbs. (41,081 N-m)
GVWR	17,500 lbs. (7940 kg) to 19,000 lbs. (8620 kg)
GAWR (front)	6,000 lbs. (2720 kg)
GAWR (rear)	13,500 lbs. (6124 kg)
Approx. Weight for Stability	11,000 lbs. (4990 kg)

Note: Actual GVWR and GAWR's should be based on weight and location of the chassis, body, lift, ballast (if required), accessories, and the payload.  
The curb weight of the unit will vary based on the rated platform capacity, mounting configuration, frame stiffness, and stability test requirements.

- ◆ Pneumatic Circuit to the Platform
- ◆ Personnel Restraint System
- ◆ 120 Volt Wiring
- ◆ Remote Reservoir
- ◆ Independent H-Frame or A-Frame Outriggers
- ◆ Outrigger Boom Interlock System
- ◆ Platform Load Capacity Options



LT-56-NE Working Envelope



LT-62-NE Working Envelope