

4400 Series

4485 Capacity and Range Chart:

OPERATING WEIGHT	LOAD RATINGS IN LBS. WITH OUTRIGGERS EXTENDED					
	27 FT	42 FT	56 FT	70 FT	85 FT	
577	44000					
870	31300	27000				
1065	26350	25000				
1260	22700	21425	18575			
1455	19900	18675	16100	13000		
1650	17600	16550	14175	12100		
2037	13800	13400	11375	9700	76	9550
2510	8000	10650	9000	8750	73	7375
30		42	8600	7325	65	7000
35		30	6700	6900	61	5850
40		8	3650	5775	56	4900
45			34	4550	50	4650
50			24	3525	45	3675
55					38	2950
60					30	2400
65					18	1800
70						
75						
80						
	700	500	350	300	250	

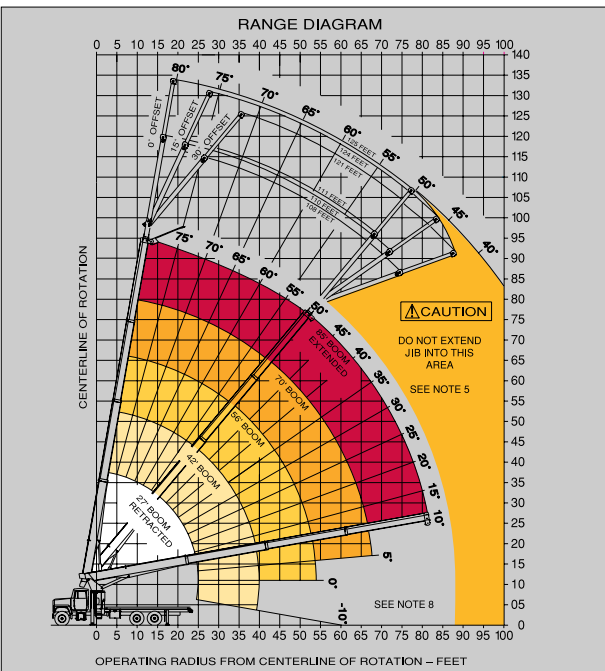
NOTE: RATINGS ABOVE THE HEAVY LINE ARE BASED ON STRUCTURAL COMPETENCE AND NOT ON MACHINE STABILITY.

AREA OF OPERATION: 360° FULL CAPACITY WORK AREA

DEDUCTIONS FROM RATED LOADS FOR HANDLING DEVICES:

- OVERHAUL BALL: 175 LBS.
- 1 SHEAVE LOAD BLOCK: 200 LBS
- 2 SHEAVE LOAD BLOCK: 250 LBS
- AUX. SHEAVE: 50 LBS

STOWED #8 DEDUCTIONS



NOTE: Diagrams depict recommended mounting dimensions. The dimensions of optional mounting configurations will vary. Please consult your dealer or Terex Cranes for specifics. Dimensions do not include load deflection.

STINGER 4485

NOTE: Please consult the Terex Cranes full-line brochure for a complete listing of standard features and optional equipment.

4485 Optional Mounting Configurations:

Behind Cab (TC)
Rear Mount (RM)

(Some standard features for the optional mounting configurations will vary. Please consult your Terex Cranes dealer or factory for chassis and mounting requirements.)

TC 4485 Minimum Chassis Requirements:

Chassis specifications are minimum for truck-crane mount. Not applicable to optional mounting configurations.

- Gross Vehicle Weight Rating52,000 lbs. (23,587 kg)
- Front Axle Weight Rating18,000 lbs. (8,165 kg)
- Rear Axle Weight Rating34,000 lbs. (15,422 kg)
- Wheelbase246 in. (6,248 mm)
- Cab To Axle168 in. (4,267 mm)
- Afterframe100 in. (254 mm)
- TransmissionHeavy-Duty 6-Bolt PTO (Neutral lock-up required for automatic transmission)
- Electrical SystemHeavy-Duty
- Cooling SystemHeavy-Duty
- Frame Section Modulus26 in.³ (426 cm³)
- RBM Per Frame Rail2,860,000 in./lbs. (32,955 kg-m)

Rope and Reeving:

1 PART LINE	2 PART LINE	3 PART LINE	4 PART LINE	5 PART LINE	CAUTION
LOADS UP TO 9,800 LBS. STD. CABLE	LOADS UP TO 19,200 LBS. STD. CABLE	LOADS UP TO 28,800 LBS. STD. CABLE	LOADS UP TO 38,400 LBS. STD. CABLE	LOADS UP TO 48,000 LBS. STD. CABLE	
6,720 LBS. ROT. RESIST. CABLE	13,440 LBS. ROT. RESIST. CABLE	20,160 LBS. ROT. RESIST. CABLE	26,880 LBS. ROT. RESIST. CABLE	33,600 LBS. ROT. RESIST. CABLE	

THIS MACHINE COMPLIES WITH OSHA REGULATIONS 1910.102 AND 1926.102 WHERE APPLICABLE AT DATE OF MANUFACTURE

3454-0533

