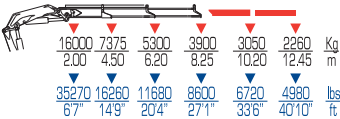
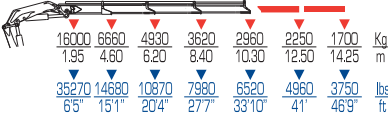




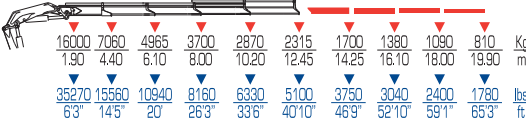
## 35022 S



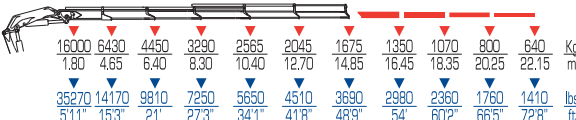
## 35023 S



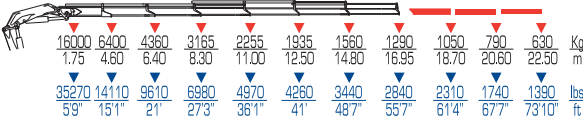
## 35024 S



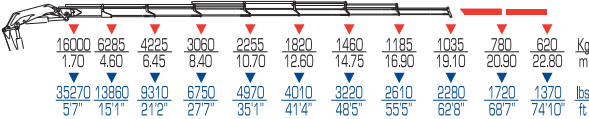
## 35025 S



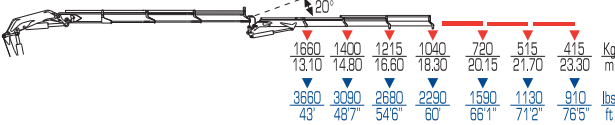
## 35026 S



## 35027 S

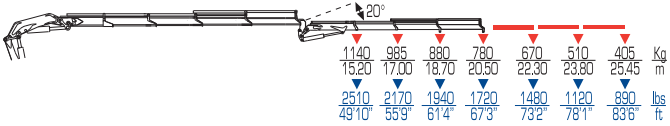


## 35023 S + J903.20

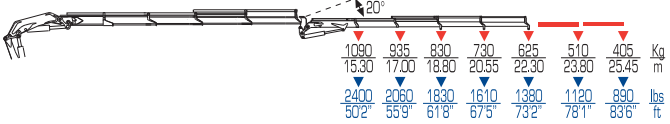


	tm	ft lbs	l/min	gals/min	Mpa	Psi	°
<b>35022 S</b>	33,2	240050	70	21	30,5	4420	410
<b>35023 S</b>	31,5	227840	70	21	30,5	4420	410
<b>35024 S</b>	31,1	224690	70	21	30,5	4420	410
<b>35025 S</b>	29,9	216260	70	21	30,5	4420	410
<b>35026 S</b>	29,4	212940	70	21	30,5	4420	410
<b>35027 S</b>	28,9	209110	70	21	30,5	4420	410
<b>35023 S + J903.20</b>	-	-	70	21	30,5	4420	410
<b>35024 S + J903.20</b>	-	-	70	21	30,5	4420	410
<b>35024 S + J904.20</b>	-	-	70	21	30,5	4420	410
<b>35025 S + J903.20</b>	-	-	70	21	30,5	4420	410
<b>35025 S + J904.20</b>	-	-	70	21	30,5	4420	410
<b>35026 S + J702.20</b>	-	-	70	21	30,5	4420	410
<b>35026 S + J703.20</b>	-	-	70	21	30,5	4420	410

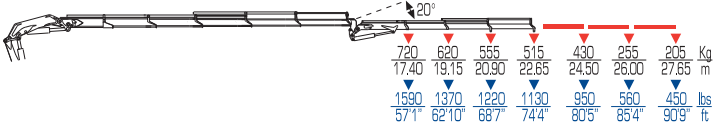
**35024 S + J903.20**



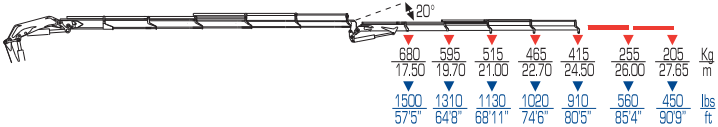
**35024 S + J904.20**



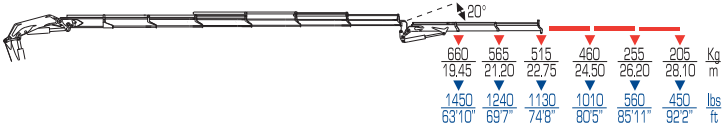
**35025 S + J903.20**



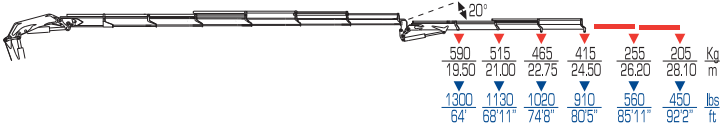
**35025 S + J904.20**



**35026 S + J702.20**



**35026 S + J703.20**



kg	lbs	kg	lbs	mm	ft	mm	ft	mm	ft
ST	ST	LC	LC						
3570	7875	3720	8205	2500	8'2"	2450	8'0"	1300	4'3"
3820	8425	3970	8755	2500	8'2"	2450	8'0"	1300	4'3"
4040	8910	4190	9240	2500	8'2"	2450	8'0"	1300	4'3"
4250	9370	4400	9705	2500	8'2"	2450	8'0"	1430	4'8"
4430	9770	4580	10100	2500	8'2"	2450	8'0"	1430	4'8"
4600	10145	4750	10475	2500	8'2"	2450	8'0"	1430	4'8"
4650	10255	4800	10585	2550	8'4"	2680	8'10"	1530	5'0"
4870	10740	5020	11070	2550	8'4"	2680	8'10"	1530	5'0"
4950	10915	5100	11245	2550	8'4"	2680	8'10"	1530	5'0"
5080	11200	5230	11535	2550	8'4"	2680	8'10"	1530	5'0"
5160	11380	5310	11710	2550	8'4"	2680	8'10"	1530	5'0"
5095	11235	5245	11565	2550	8'4"	2680	8'10"	1530	5'0"
5165	11390	5315	11720	2550	8'4"	2680	8'10"	1530	5'0"