

670-WALC CRANE

Oper. Rad. Ft.	40 Ft. Boom	50 Ft. Boom	60 Ft. Boom	70 Ft. Boom	80 Ft. Boom	90 Ft. Boom
12	98000					
15	68700	68700				
20	45400	45400		45200		
25	33600	33600	33400	33300	33100	32900
30	26400	26400	26200	26100	25900	25700
35	21700	21600	21400	21300	21100	20900
40	18200	18100	18000	17800	17600	17400
45		15600	15400	15200	15000	14800
50		13600	13400	13200	13000	12700
60			10500	10300	10000	9800
70				8300	8000	7750
80					6600	6300
90						5250
100						
110						
120						

GENERAL DATA

BOOM: Tubular T-1 steel chords (50" x 50" chordal dimension) lattice construction.
 Basic length, pin connected in two equal sections... 40 ft.
 Open throat with four boom point sheaves on offset boom point on anti-friction bearings — pitch diameter 18 1/2" 10 part boom hoist reeving standard.
 Roller type boom point sheave guard, (optional extra).
HOOK BLOCK: Single sheave with swivel hook and 3 part hoist line standard 26 ton
 Four sheaves with swivel hook 8 parts line max. (optional extra) 70 ton
JIB HOOK: Single sheave swivel hook 2 part line max. Weighted hook offered with optional swivel.
POWER CONTROLLED LOAD LOWERING: Planetary device for controlling load lowering speed with engine. Available for either or both front and rear main hoist drums (optional extra).
BOOM BACKSTOP: Telescoping type with spring bumper (optional extra).
GANTRY: High gantry, 3 position, telescoping type
WORKING WEIGHT: (including block with standard 30" wide forged flat shoes.) 125,000 lbs.
 (Counterweight included in working weight and removable 30,000 lbs.)

CRAWLERS RETRACTED

Oper. Rad. Ft.	100 Ft. Boom	110 Ft. Boom	120 Ft. Boom	130 Ft. Boom	140 Ft. Boom	150 Ft. Boom
12						
15						
20						
25	32800					
30	25500	25400	25100			
35	20700	20500	20300	20200	20000	
40	17200	17000	16800	16700	16500	16300
45	14600	14400	14200	14100	13900	13600
50	12600	12400	12200	12100	11900	11600
60	9650	9450	9200	9100	8850	8650
70	7600	7400	7150	7050	6800	6550
80	6100	5900	5650	5550	5300	5050
90	5000	4750	4500	4400	4150	3900
100	4150	3900	3650	3500	3250	3000
110		3250	2950	2750	2500	2300
120			2400	2200	1950	1700

Centerline to centerline width of retracted crawlers is 8' 8" and of extended crawlers is 14' 0" operating radius is horizontal distance from the centerline of rotation to a vertical line through the gravity center of the load. Ratings are based on counter weight of 30,000 lbs. Center block required for boom lengths 170 ft. and over. Ratings shown are based upon boom insert arrangement shown in the core and operation manual. Backstops recommended for all boom lengths. At radii and boom lengths where no ratings are shown on plate, operation is not intended or approved. Ratings are based upon freely suspended loads and machine standing on firm level uniformly supporting surface. Safe loads depend on ground conditions, boom length, radius of operation, and proper handling, all of which must be taken into account by user. Capacities shown are not more than 75% of the tipping loads. The crane ratings include weight of hook, block, slings and all other load handling accessories. Ratings are contingent upon machine being equipped with proper boom.
 Machines with basic length boom may be transported or crawled with 2000 lb. in lowered position. Machine may be operated at rated capacity with gantry in lowered or intermediate position with boom length 70 ft. or less and boom angles greater than 30° above horizontal.
 Boom dimensions 50" W x 50" D No dimensions 24" W x 22" D

RATED CRANE LOADS IN POUNDS — MAIN BOOM — OVER SIDE AND FRONT

Oper. Rad. Ft.	Angle	40 Ft. Boom		Angle	50 Ft. Boom		Angle	60 Ft. Boom		Angle	70 Ft. Boom		Angle	80 Ft. Boom		Angle	90 Ft. Boom		Angle	100 Ft. Boom		Angle	110 Ft. Boom	
		Boom Pt. El.	Rating Lbs.		Boom Pt. El.	Rating Lbs.		Boom Pt. El.	Rating Lbs.		Boom Pt. El.	Rating Lbs.		Boom Pt. El.	Rating Lbs.		Boom Pt. El.	Rating Lbs.		Boom Pt. El.	Rating Lbs.		Boom Pt. El.	Rating Lbs.
12	78	46.4	140000																					
15	74	45.6	106000																					
20	66	43.9	74300	77	55.9	108700	74	65.0	74300	72	75.8	74300												
25	58	41.2	52500	65	52.6	52500	69	63.4	52400	77	74.0	52400	75	84.4	52200	76	94.7	52100	78	104.9	52000			
30	49	37.4	40300	58	48.9	40300	64	61.3	40200	68	72.2	40100	71	82.9	40000	73	93.4	39800	75	103.7	39700	76	114.1	39500
35	38	32.8	32600	51	46.3	32500	59	58.5	32400	64	69.9	32300	67	80.9	32100	70	91.7	31900	72	102.3	31800	74	112.7	31600
40	24	23.3	27200	43	41.6	27100	53	55.1	27000	59	67.2	26900	63	78.6	26700	66	89.7	26500	69	100.5	26400	71	111.2	26200
45				34	35.1	23200	47	50.8	23000	54	63.8	22900	59	75.9	22700	63	87.2	22500	66	98.8	22400	68	109.3	22200
50				21	25.2	20200	39	45.3	20000	49	59.8	19800	55	72.6	19600	59	84.5	19400	63	96.0	19300	65	107.1	19100
60							19	28.8	15700	36	48.6	15500	45	64.1	15300	51	77.5	15100	56	90.0	14900	59	101.9	14700
70										18	24.4	12800	34	51.7	12300	43	68.0	12100	48	82.1	11900	53	95.1	11700
80												17	29.9	10200	32	54.6	10000	40	71.8	9800	46	84.5	9600	
90														16	31.2	8400	30	57.3	8200	38	75.3	8000		
100																25	32.5	6950	29	58.9	6750			
110																			14	33.8	5750			
120																								

Oper. Rad. Ft.	Angle	120 Ft. Boom		Angle	130 Ft. Boom		Angle	140 Ft. Boom		Angle	160 Ft. Boom		Angle	160 Ft. Boom		Angle	170 Ft. Boom		Angle	180 Ft. Boom				
		Boom Pt. El.	Rating Lbs.		Boom Pt. El.	Rating Lbs.		Boom Pt. El.	Rating Lbs.		Boom Pt. El.	Rating Lbs.		Boom Pt. El.	Rating Lbs.		Boom Pt. El.	Rating Lbs.		Boom Pt. El.	Rating Lbs.	Boom Pt. El.	Rating Lbs.	
12																								
15																								
20																								
25																								
30	77	124.3	39300																					
36	75	122.1	31400	76	133.4	31300	77	143.7	31100															
40	72	121.7	26000	74	132.1	25900	75	142.5	25600	76	152.8	25400	77	163.1	25400	78	172.2	21100	77	182.5	20900			
45	70	120.0	22000	72	130.4	21800	73	141.1	21500	74	151.5	21400	75	161.9	21300	76	170.9	18000	75	182.2	17800			
50	67	118.0	18500	69	128.8	18500	71	139.4	18500	72	150.0	18300	73	160.4	18200	74	170.9	17600	72	178.3	17400			
60	62	111.2	14500	64	124.5	14400	66	135.5	14100	68	146.4	13900	69	156.9	13750	70	167.9	13600	67	183.9	10600	66	174.7	10400
70	57	107.4	11500	59	119.2	11400	62	130.8	11100	64	141.9	10900	66	153.0	10800	67	163.9	8400	65	176.4	8200			
80	51	99.9	9000	54	112.6	9200	57	124.7	9000	59	136.5	8750	62	148.0	8650	63	158.3	6750	61	165.3	6500			
90	44	80.6	7750	48	104.5	7600	52	117.5	7350	55	130.0	7180	57	142.1	7000	60	153.8	6400	56	168.4	6200			
100	37	78.6	6500	42	94.5	6300	47	108.9	6050	50	122.3	5800	53	135.1	5700	56	147.4	4650	54	152.6	4200			
110	27	62.3	5500	35	81.8	5300	41	98.2	5050	45	113.1	4800	48	126.9	4650	51	140.0	4450	54	152.6	4200			
120	14	34.9	4700	26	64.7	4450	34	84.9	4200	39	101.8	3950	43	117.2	3800	47	131.2	3400	50	144.7	3350			



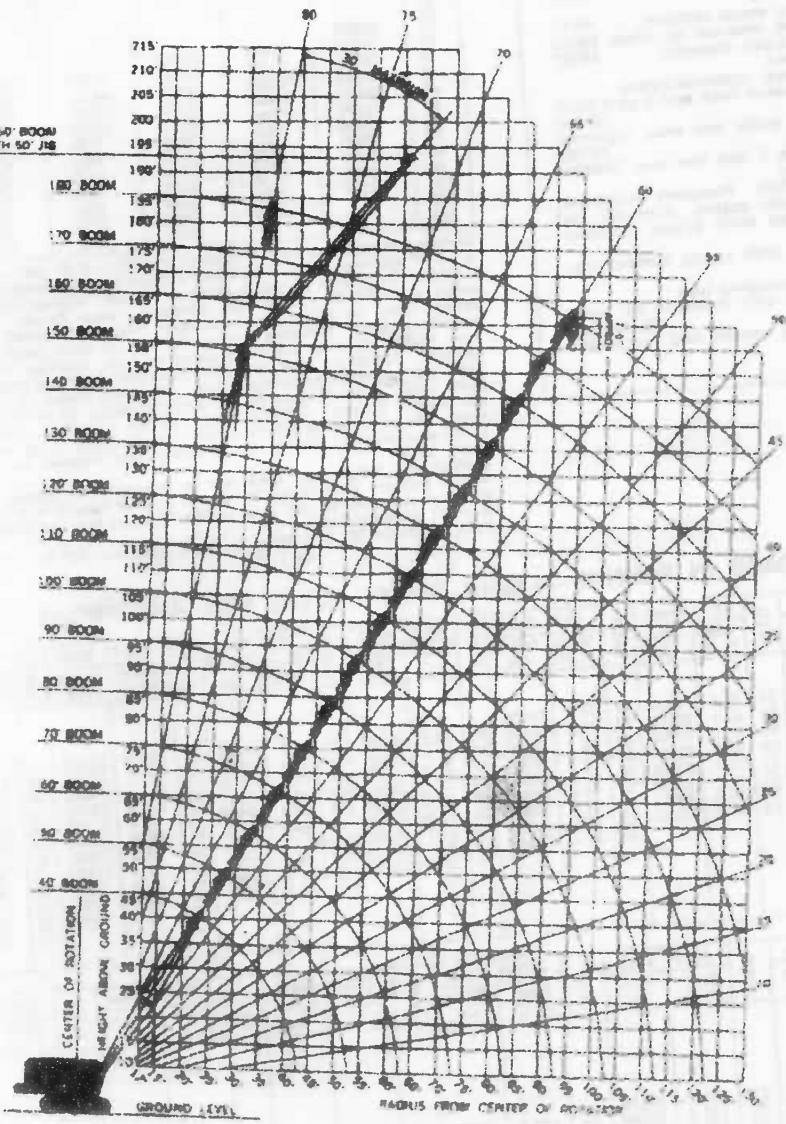
Manufactured and sold in conformance with U.S. Department of Commerce Commercial Standard CS90-58.
 Harnischfeger Corporation reserves the right to make changes in specifications without advance notice.
 Data published herein is statistical and for information only. Performance may vary with the conditions encountered.

HARNISCHFEGER

Milwaukee, Wisconsin 53204

P&H® 670-WLC

70-ton Crawler Crane
150' Boom plus 50' Jib
180' boom



Your versatile P & H 670-WLC adapts readily to your special operating needs. This brochure contains these crane rating charts.

Standard Boom:

- 1 - 30,000 lbs counterweight
- Crawlers extended
- 40 to 180 foot booms
- 2 - 30,000 lbs counterweight
- Crawlers retracted
- 40 to 150 foot booms

Alt. Ratings

THIS P&H MODEL 670-WLC MEETS THE REQUIREMENTS OF ANSI B30.5-1968. BOOM STRUCTURE HAS BEEN TESTED PER SAE J987. MACHINE STABILITY HAS BEEN TESTED PER SAE J765.

Standard
50" wide x 50" deep
Boom

crane lifting capacities
working ranges