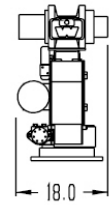
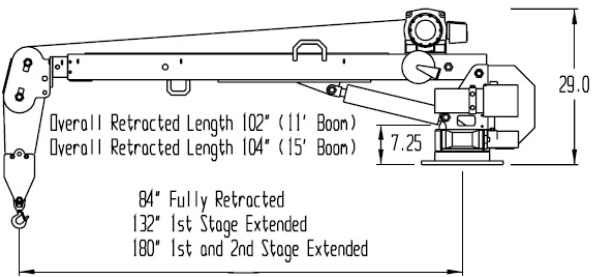


specifications

3200 EH - 10,000 ft/lb maximum capacity



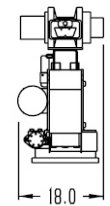
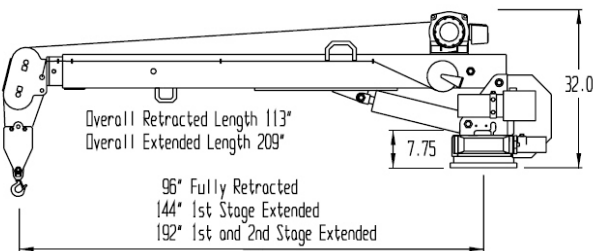
requirements

- 1000 CCA battery
- Auxiliary battery (DC) (recommended)
- 100 amp alternator
- 14"x16" base plate
- 14.75"x11.5" bolt pattern
- Outriggers
- Base Weight—617 lb

ratings

- 3200 lb @ 3 ft
- 2625 lb @ 4 ft
- 2100 lb @ 5 ft
- 1750 lb @ 6 ft
- 1500 lb @ 7 ft
- 1312 lb @ 8 ft
- 1050 lb @ 10 ft
- 954 lb @ 11 ft
- 807 lb @ 13 ft
- 700 lb @ 15 ft

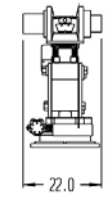
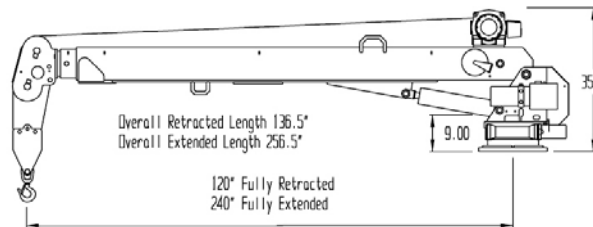
4000 EH - 16,000 ft/lb maximum capacity



- 1000 CCA battery
- Auxiliary battery (DC) (recommended)
- 150 amp alternator
- 14"x14" base plate
- 12"x12" bolt pattern
- Outriggers
- Base Weight—829 lb

- 4000 lb @ 4 ft
- 3200 lb @ 5 ft
- 2666 lb @ 6 ft
- 2286 lb @ 7 ft
- 2000 lb @ 8 ft
- 1777 lb @ 9 ft
- 1600 lb @ 10 ft
- 1333 lb @ 12 ft
- 1143 lb @ 14 ft
- 1000 lb @ 16 ft

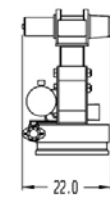
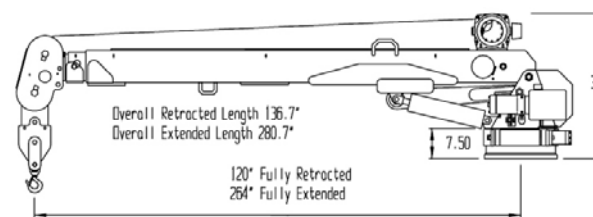
5000 EH - 25,000 ft/lb maximum capacity



- 1000 CCA battery
- Auxiliary battery (DC)
- 150 amp alternator
- 16.75"x16.75" base plate
- 14.75"x14.75" bolt pattern
- Outriggers
- Base Weight—1,400 lb

- 5000 lb @ 5 ft
- 4166 lb @ 6 ft
- 3571 lb @ 7 ft
- 3125 lb @ 8 ft
- 2500 lb @ 10 ft
- 2083 lb @ 12 ft
- 1785 lb @ 14 ft
- 1562 lb @ 16 ft
- 1388 lb @ 18 ft
- 1250 lb @ 20 ft

6000 EH - 36,000 ft/lb maximum capacity



- 1000 CCA battery
- Auxiliary battery (DC)
- 150 amp alternator
- 18"x18" base plate
- 14.75"x14.75" bolt pattern
- Outriggers
- Base Weight—1,550 lb

- 6000 lb @ 6 ft
- 5143 lb @ 7 ft
- 4500 lb @ 8 ft
- 3600 lb @ 10 ft
- 3000 lb @ 12 ft
- 2571 lb @ 14 ft
- 2250 lb @ 16 ft
- 2000 lb @ 18 ft
- 1800 lb @ 20 ft
- 1636 lb @ 22 ft



Maintainer

EH SERIES CRANES

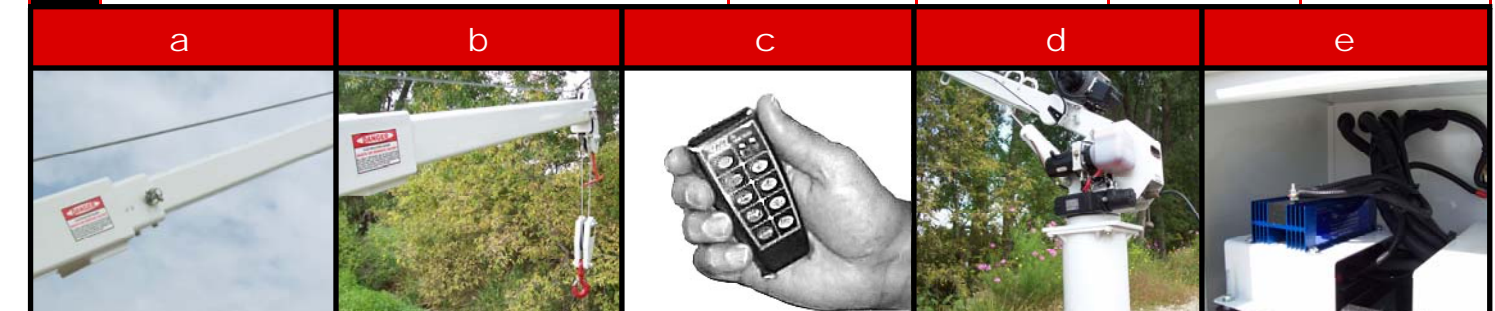
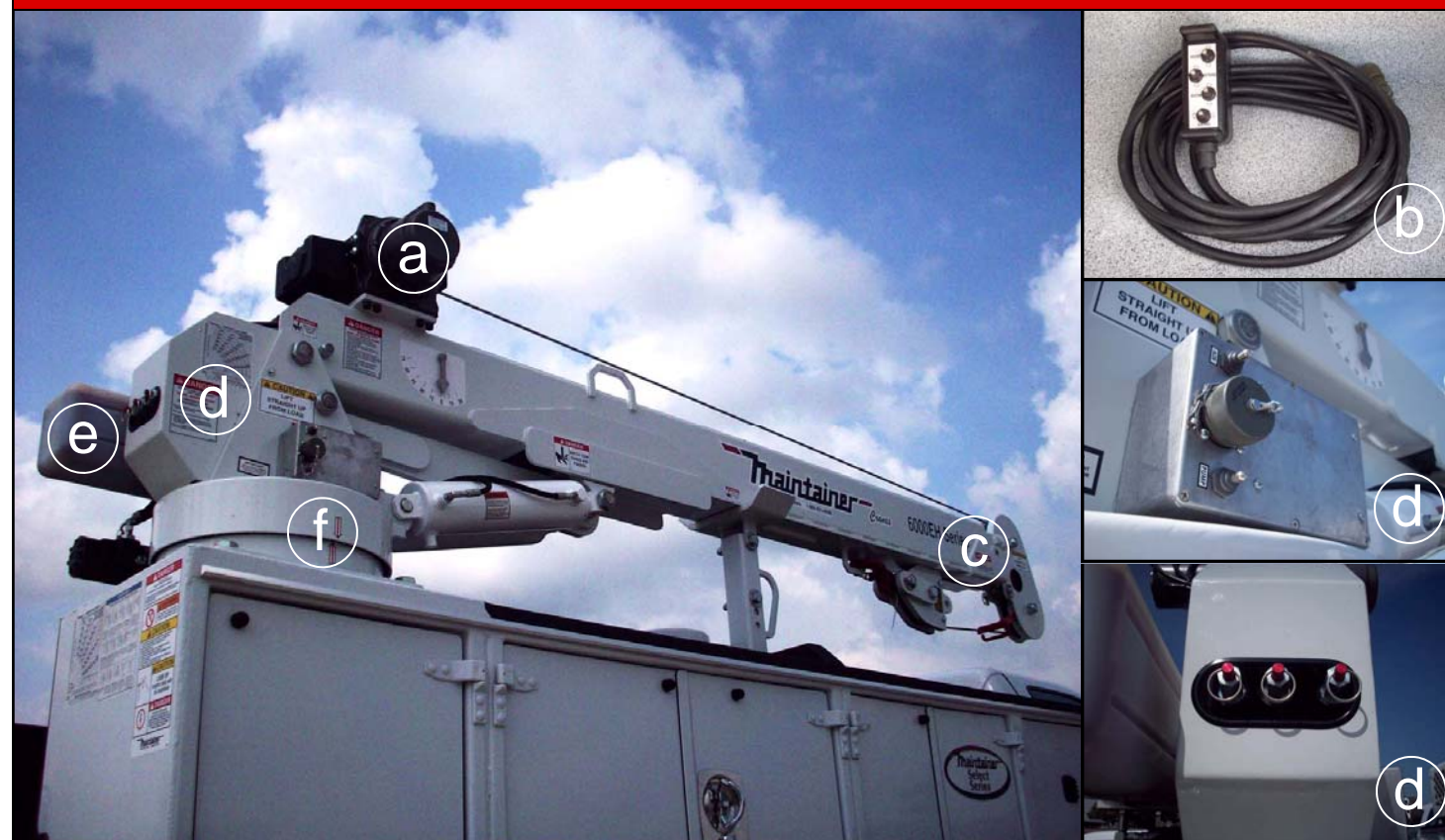


features

options

		3200 EH	4000 EH	5000 EH	6000 EH
a	Planetary Winch — Hoist drum and wire rope located outside of boom for improved operator visibility.	X	X	X	X
b	Control System — 100% solid-state with arc-suppression with a 25' cable.	X	X	X	X
c	Anti Two-Block — Standard on all models.	X	X	X	X
d	System Overrides — Anti two-block. Pump, and crane functions.	X	X	X	X
e	Hydraulic System — Self Contained, 12 Volt DC motor delivers 2.2 gal/min.	X	X	X	X
f	Rotation — All steel worm gear drive system provides 360 degree continuous.	X	X	X	X

		3200 EH	4000 EH	5000 EH	6000 EH
a	Manual Extension — 4 ft to 6 ft of extra boom reach.	X	X		
b	Power Extend — Eliminates manual boom reach adjustments.	X	X	X	X
c	Wireless Remote Control — No more cables to tend with.	X	X	X	X
d	Crane Pedestal — 20", Utilize for flat bed applications.	X	X		X
e	Battery Isolator —Dedicates crane function draw from the auxiliary battery only, thus protecting your truck battery.	X	X	X	X



standard

All EH Series cranes are shipped assembled, factory tested and ready to go to work!

Like the Maintainer service and lube bodies, the EH Series has been designed to perform to a higher standard of durability and reliability, while providing the maximum duty cycle possible in today's electric crane industry.

Complete with a 25 foot power cable, wiring harness, remote control pendant, mounting bolts, 225 amp fuse, and operator's manual, these cranes mount with the minimum of effort.

Standard features like powder coated finishes, polymer wire rope pulleys, industrial grade electrical contactors, 100% solid-state controls, safety valves on all cylinders, load cushioning counterbalance check valves, large diameter self locking rotation drive system, and automatic overload protection set this series of electric cranes apart from any other.