

# PK 26502

Performance

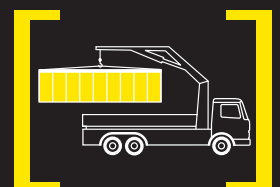
**PALFINGER**



## SUPERIOR MOVEMENT GEOMETRY FOR A WIDE RANGE OF DUTIES

The floor-controlled PK 26502 *Performance* stands out by virtue of its superior crane geometry: The endless slewing mechanism fitted as standard and incorporating a slewing ring permits maximum mobility. Through the POWER LINK PLUS system the crane has a knuckle boom which can be angled upwards 15° – with the result, for example, that work can be carried out without any problems inside buildings.

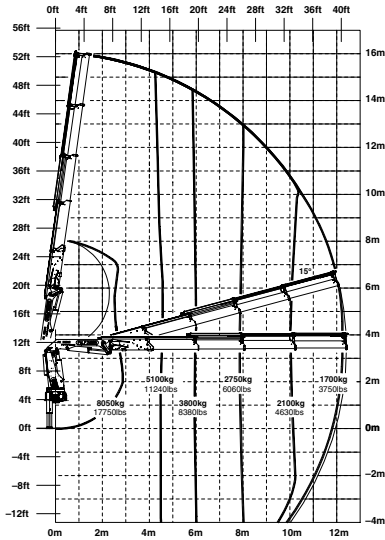
With 8 hydraulic extensions it is unrivalled in its class. Through the optional equipment with high-seat control the crane can be ideally adapted to the customer's own specific requirements.



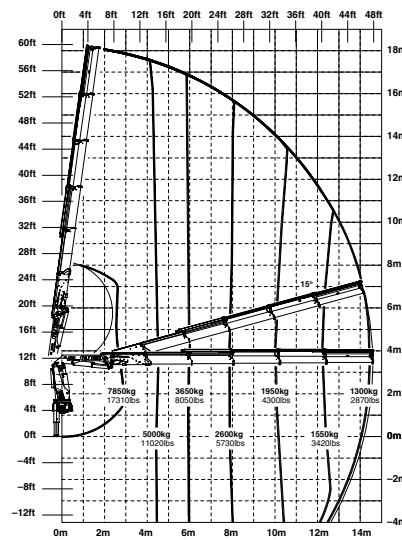
# CONVENTIONALLY CONTROLLED – WITH THE ADVANTAGES OF A REAL PERFORMANCE CRANE



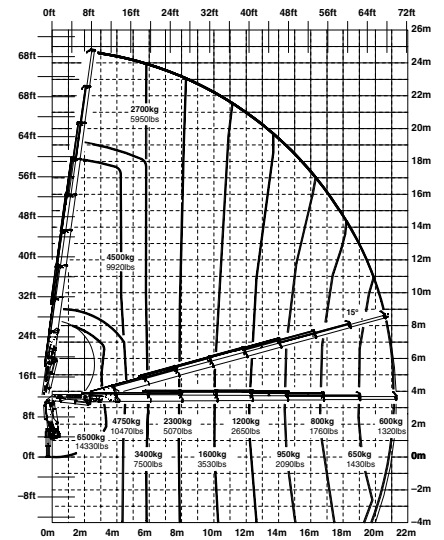
**PK 26502 Performance C**



**PK 26502 Performance D**

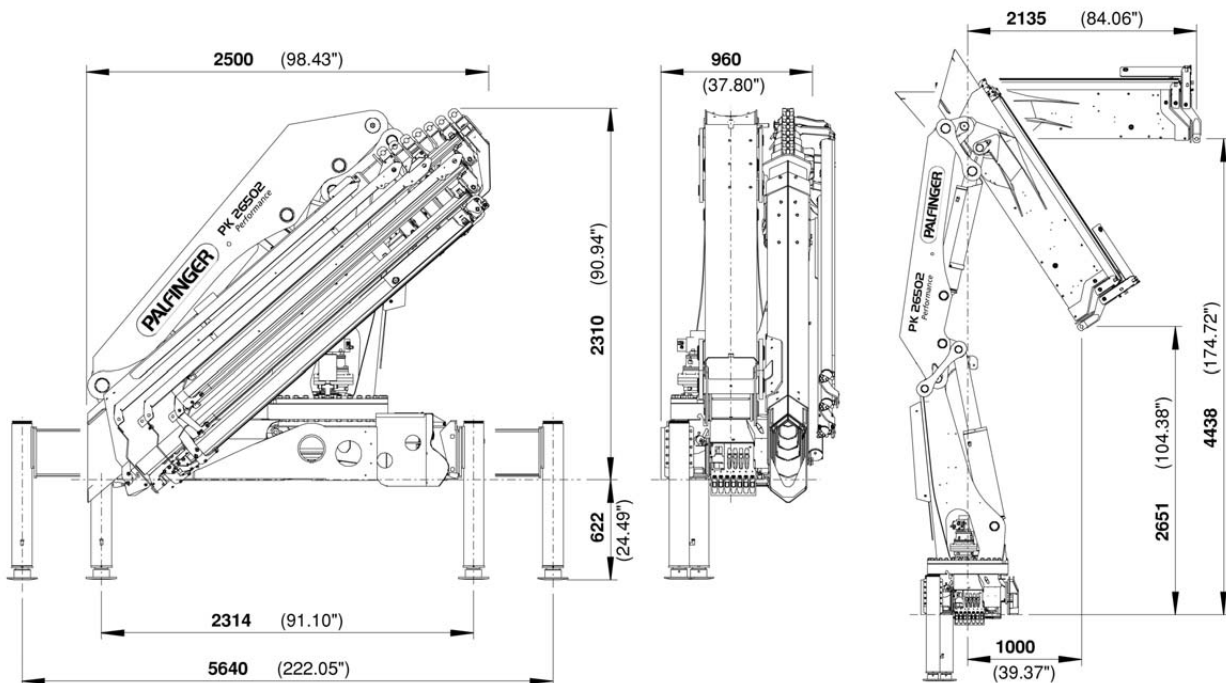


**PK 26502 Performance G**



PK 26502 Performance		
Technical Specifications (DIN 15018 H1-B3)		
Max. lifting moment	25.5 mt/250.1 kNm	184400 ft.lbs
Max. lifting capacity	8500 kg/83.4 kN	18740 lbs
Max. hydraulic outreach	21.3 m	69' 11"
Max. manual outreach	23.3 m	76' 5"
Slewing angle	endless	

PK 26502 Performance		
Standard crane		
Slewing torque	3.3 mt/32.4 kNm	23890 ft.lbs
Outreach	8.1 m	26' 7"
Stabilizer spread standard	5.6 m	18' 6"
Stabilizer spread max.	6.6 m	21' 9"
Fitting space required	0.96 m	3' 2"
Width folded	2.5 m	8' 2"
Max. operating pressure	300 bar	4350 psi
Recommended pump capacity	from 55 l/min	12.1 imp.gal./min 14.5 US gal./min
	to 80 l/min	17.6 imp.gal./min 21.1 US gal./min
with RC- and LS-system	from 65 l/min	14.3 imp.gal./min 17.2 US gal./min
	to 80 l/min	17.6 imp.gal./min 21.1 US gal./min
Dead weight standard crane	2847 kg	6280 lbs



Applications shown in the leaflet do not always correspond to the standard specifications. Design and specification are subject to change without prior notice. Country-specific regulations must be considered for the crane installation.