

GTMR 356 A

POTAIN 

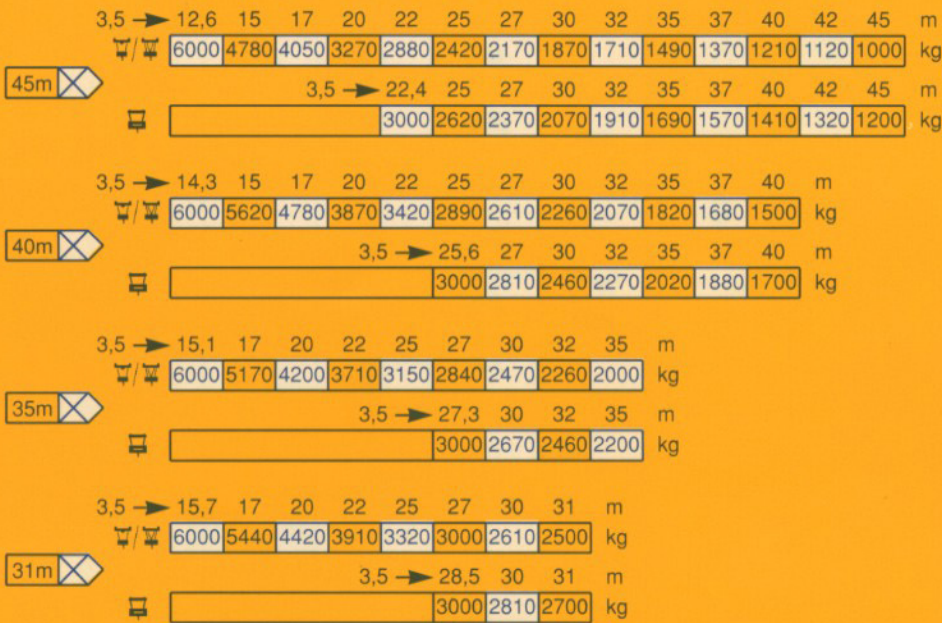
Courbes de charges

Lastkurven

Load diagrams

Curvas de cargas

 Flèche Ausleger Jib Flecha



Flèche relevée

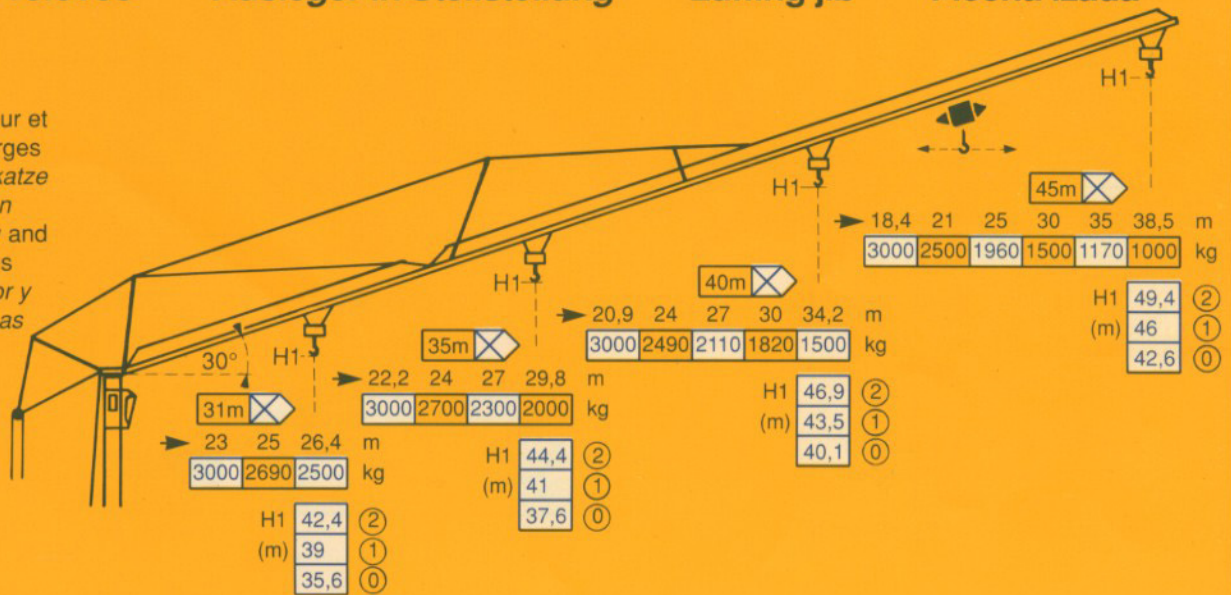
Ausleger in Steilstellung

Luffing jib

Flecha izada

 4 D3 V3

Chariot distributeur et
Courbes de charges
Verfahrbare Laufkatze
und Lastkurven
Traversing trolley and
Load diagrams
Carro distribuidor y
Curvas de cargas

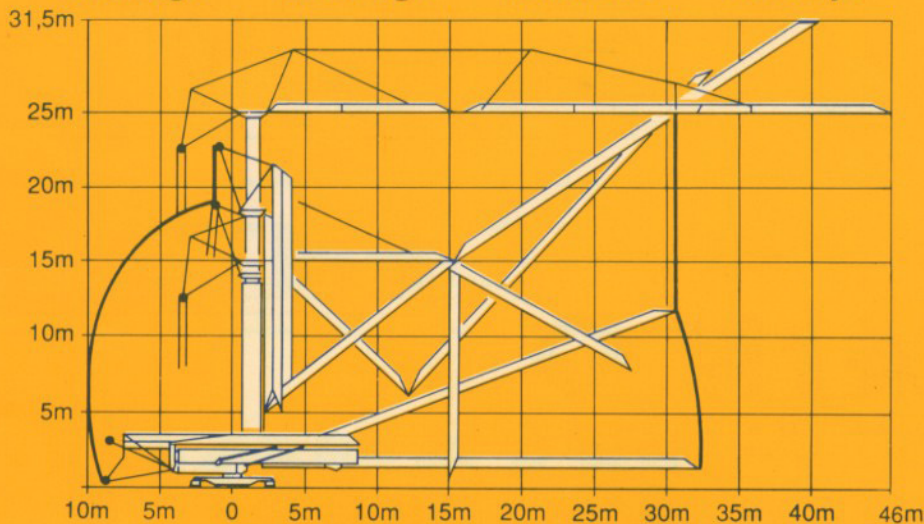


Montage

Montage

Erection

Montaje










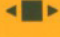







Mécanisme

Antriebe

Mechanisms

Mecanismos

				m/min	kg	ch-PS hp	kW
Levage Heben Hoisting Elevación	25 PC 15 			5,4	3000	4,5	3,3
				30	3000		
				60	1500		
				2,7	6000	4,5	3,3
				15	6000		
				30	3000		
Distribution - <i>Katzfahren</i> Trolleying - <i>Distribución</i>		4 D3 V3	15-30-58		4	3	
Orientation - <i>Schwenken</i> Slewing - <i>Orientación</i>		RCV 61	0 → 0,8 tr/min U/min-rpm		8	5,9	
Translation - <i>Kranfahren</i> Travelling - <i>Traslación</i>		Standard	25		2 x 4	2 x 3	
Réseau - <i>Netzstrom</i> - Mains supply - <i>Red</i>						380V - 50HZ	
Puissance électrique nécessaire - <i>Anschlusswert</i> - Necessary electric power - <i>Potencia electrica necesaria</i>						40 KVA	
Groupe électrogène - <i>Stromaggregat</i> - Generator set - <i>Grupo electrogeno</i>						*	

* Nous consulter - *Auf Anfrage* - Consult us - *Consultanos*

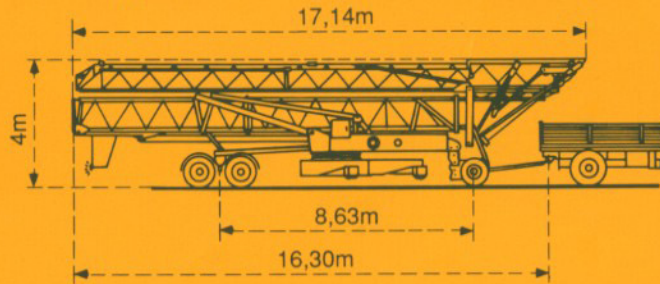
Transport

Transport

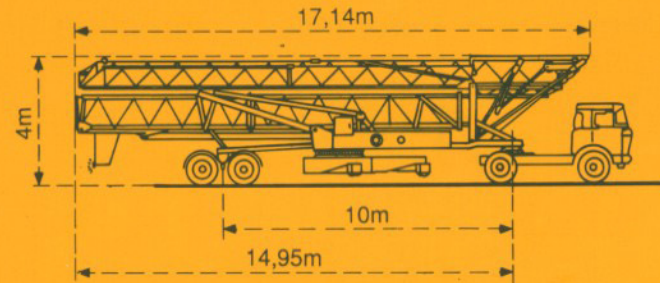
Transport

Transporte

Version tractée derrière camion
Ausführung als LKW-Anhänger
 Lorry towed version
Versión remolcable detrás de un camion



Version semi-portée
Ausführung als Sattelaufleger
 Tractor towed version
Versión en semi-remolque



Conforme à la directive CEE 84/534 sur le niveau acoustique - *Gemäss EWG-Richtlinie 84/534 über Schall-Leistungspegel*
 In compliance with the EEC 84/534 Instruction on noise level - *Conforme con la directiva CEE 84/534 sobre el nivel acustico*

DIN 15018 H1 B3

NF E52081 - 82

POTAIN 

18, rue de Charbonnières, B.P. 173-F 69132 ECULLY Cedex
 Tél. 72.20.20.20 - Télex 330 179 - Télex. Export 375 213 -
 Fax 72 20 20 00

POTAIN GmbH 6082 MÖRFELDEN WALLDORF
 Nordendstr. 79-87 - Postfach 420
 Tél. 06 105 704.0 - Télex 4.1857 45

GTMR 356 A

Réf. 1990.01 LAF 2

Modifications réservées - *Anderungen vorbehalten* - Subject to modification - *Modificaciones reservadas*

Printed in France