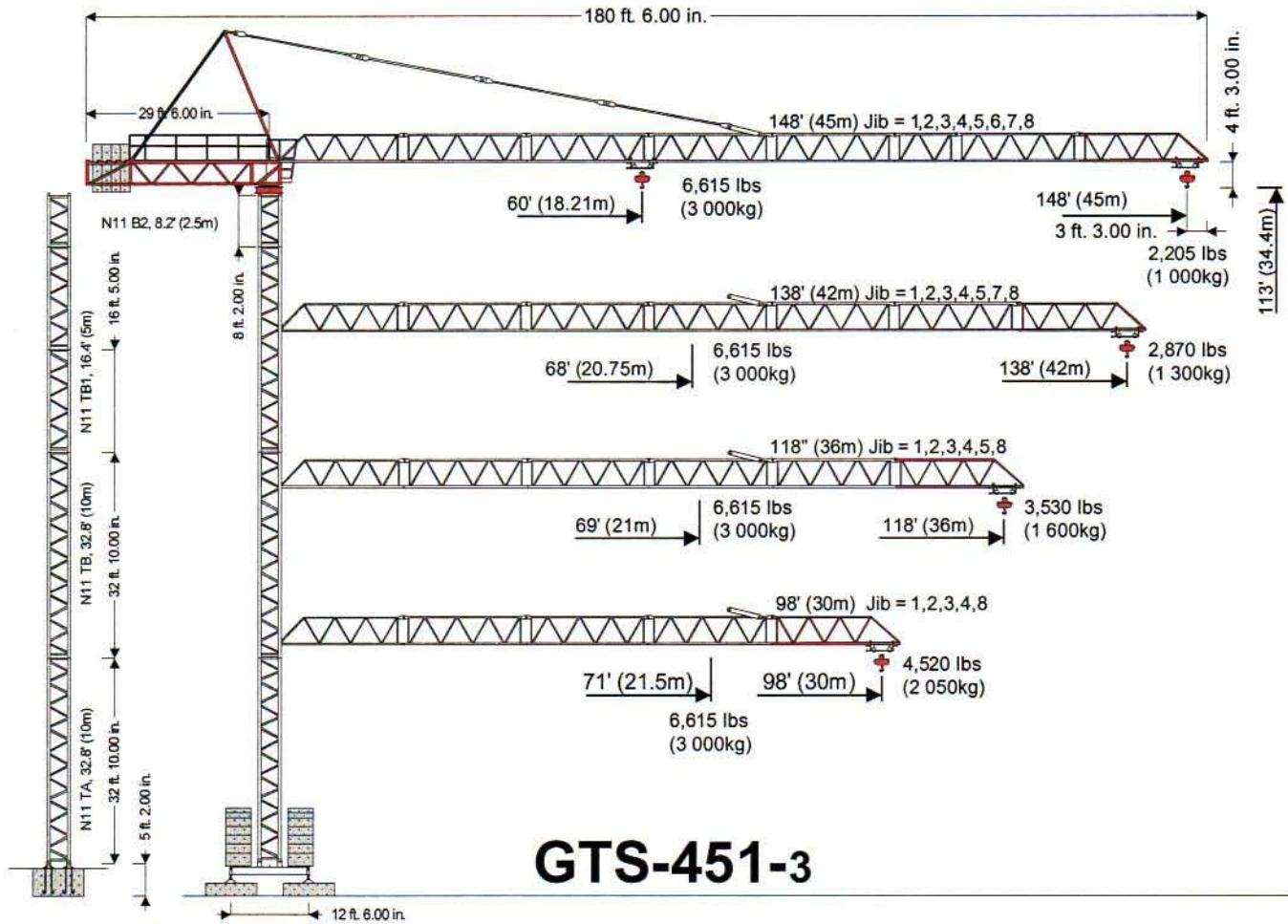


COMEDIL "CITY" Tower Crane



GTS-451-3

Hook Radius	ft. m	33 10	39 12	52 16	59 18	69 21	79 24	89 27	98 30	108 33	118 36	128 39	138 42	148 45
148' 45m	lbs. tonnes	6,615 3.00	6,615 3.00	6,615 3.00	6,615 3.00	5,623 2.55	4,829 2.19	4,190 1.90	3,704 1.68	3,285 1.49	2,955 1.34	2,646 1.20	2,403 1.09	2,205 1.00
138' 42m	lbs. tonnes	6,615 3.00	6,615 3.00	6,615 3.00	6,615 3.00	6,527 2.96	5,601 2.54	4,895 2.22	4,322 1.96	3,859 1.75	3,462 1.57	3,131 1.42	2,867 1.30	
118' 36m	lbs. tonnes	6,615 3.00	6,615 3.00	6,615 3.00	6,615 3.00	6,615 3.00	5,689 2.58	4,961 2.25	4,388 1.99	3,903 1.77	3,528 1.60			
98' 30m	lbs. tonnes	6,615 3.00	6,615 3.00	6,615 3.00	6,615 3.00	6,615 3.00	5,843 2.65	5,094 2.31	4,520 2.05					