

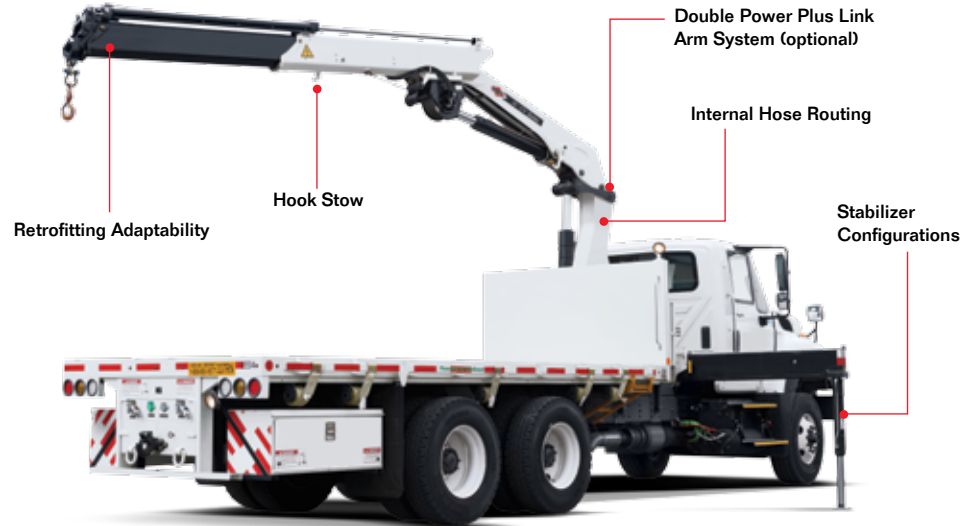
18/124

Articulating Crane



► 18/124 Articulating Crane

Featuring hexagonal booms for greater strength and stability, IMT® 18/124 articulating cranes have a max lifting capacity of 13,800 lb (6,260 kg) for the SL model and 14,265 lb (6470 kg) for the DL model. A horizontal reach of 71 ft 2 in (21.7 m) — as well as increased versatility, durability, and maneuverability — makes these compact cranes ideal for a number of demanding job tasks. Plus, they have the ability to stow within themselves, freeing up payload space for additional materials.



18/124SL Specifications

	2 - Hydraulic	3 - Hydraulic	4 - Hydraulic	5 - Hydraulic	6 - Hydraulic	7 - Hydraulic	8 - Hydraulic
Crane Rating*	119,345 ft-lb (16.5 tm)	116,450 ft-lb (16.1 tm)	112,835 ft-lb (15.6 tm)	109,220 ft-lb (15.1 tm)	106,325 ft-lb (14.7 tm)	102,710 ft-lb (14.2 tm)	101,260 ft-lb (14 tm)
Max Horizontal Reach	27' 3" (8.3 m)	33' 10" (10.3 m)	41' (12.5 m)	48' 7" (14.8 m)	56' 5" (17.2 m)	63' 8" (19.4 m)	71' 2" (21.7 m)
Max Vertical Reach	35' 1" (10.7 m)	42' (12.8 m)	49' 3" (15 m)	56' 5" (17.2 m)	64' 4" (19.6 m)	71' 10" (21.9 m)	79' 1" (24.1 m)
Max Capacity	13,800 lb (6260 kg)	13,030 lb (5910 kg)	12,280 lb (5570 kg)	11,595 lb (5260 kg)	11,355 lb (5150 kg)	10,735 lb (4870 kg)	10,250 lb (4650 kg)
Max Cap @ Max Reach	4365 lb (1980 kg)	3220 lb (1460 kg)	2380 lb (1080 kg)	1740 lb (790 kg)	1255 lb (570 kg)	860 lb (390 kg)	615 lb (280 kg)
Crane Weight **	3900 lb (1770 kg)	4245 lb (1925 kg)	4585 lb (2080 kg)	4895 lb (2220 kg)	5170 lb (2345 kg)	5400 lb (2450 kg)	5590 lb (2535 kg)
Hook Approach							
Vertical	7' 3" (2.21 m)	7' 6" (2.29 m)	7' 10" (2.38 m)	8' 1" (2.47 m)	8' 5" (2.56 m)	8' 8" (2.65 m)	9' (2.74 m)
Horizontal	2' 3" (0.69 m)	2' 5" (0.74 m)	2' 7" (0.79 m)	2' 9" (0.84 m)	2' 11" (0.89 m)	3' 1" (0.94 m)	3' 3" (1 m)
Center of Gravity - Stored							
Vertical	2' 6" (770 mm)	2' 8" (820 mm)	2' 8" (815 mm)	2' 9" (835 mm)	2' 10" (855 mm)	2' 10" (875 mm)	2' 11" (890 mm)
Horizontal (C/L Rotation to Bridge)	13.4" (340 mm)	12.4" (315 mm)	12.2" (310 mm)	11.8" (300 mm)	11.2" (285 mm)	10.6" (270 mm)	10.4" (265 mm)

18/124DL Specifications

	2 - Hydraulic	3 - Hydraulic	4 - Hydraulic	5 - Hydraulic	6 - Hydraulic	7 - Hydraulic	8 - Hydraulic
Crane Rating*	120,070 ft-lb (16.6 tm)	116,450 ft-lb (16.1 tm)	112,835 ft-lb (15.6 tm)	109,940 ft-lb (15.2 tm)	106,325 ft-lb (14.7 tm)	103,430 ft-lb (14.3 tm)	101,260 ft-lb (14 tm)
Max Horizontal Reach	27' 3" (8.3 m)	33' 10" (10.3 m)	41' (12.5 m)	48' 7" (14.8 m)	56' 5" (17.2 m)	63' 8" (19.4 m)	71' 2" (21.7 m)
Max Vertical Reach	35' 1" (10.7 m)	42' (12.8 m)	49' 3" (15 m)	56' 5" (17.2 m)	64' 4" (19.6 m)	71' 10" (21.9 m)	79' 1" (24.1 m)
Max Capacity	14,265 lb (6470 kg)	13,625 lb (6180 kg)	13,005 lb (5900 kg)	12,435 lb (5640 kg)	11,925 lb (5410 kg)	11,400 lb (5170 kg)	10,980 lb (4980 kg)
Max Cap @ Max Reach	4365 lb (1980 kg)	3220 lb (1460 kg)	2380 lb (1080 kg)	1740 lb (790 kg)	1255 lb (570 kg)	860 lb (390 kg)	615 lb (280 kg)
Crane Weight **	4055 lb (1840 kg)	4400 lb (1995 kg)	4805 lb (2180 kg)	5115 lb (2320 kg)	5390 lb (2445 kg)	5620 lb (2550 kg)	5810 lb (2635 kg)
Hook Approach							
Vertical	7' 3" (2.21 m)	7' 6" (2.29 m)	7' 10" (2.38 m)	8' 1" (2.47 m)	8' 5" (2.56 m)	8' 8" (2.65 m)	9' (2.74 m)
Horizontal	2' 3" (0.69 m)	2' 5" (0.74 m)	2' 7" (0.79 m)	2' 9" (0.84 m)	2' 11" (0.89 m)	3' 1" (0.94 m)	3' 3" (1 m)
Center of Gravity - Stored							
Vertical	2' 7" (795 mm)	2' 8" (820 mm)	2' 9" (840 mm)	2' 10" (855 mm)	2' 10" (855 mm)	2' 11" (890 mm)	3' (910 mm)
Horizontal (C/L Rotation to Bridge)	12.8" (325 mm)	12.4" (315 mm)	12.2" (310 mm)	11.4" (290 mm)	11.2" (285 mm)	10.4" (265 mm)	10" (255 mm)

* Crane rating (ft-lb) is the rated load (lb) multiplied by the respective distance (ft) from centerline of rotation with all extensions retracted and the inner and outer booms in a horizontal position, per ANSI B30.22. ** Crane weight does not include stabilizers.

Standard Features

- Application-specific product offering
- Superior lift-to-weight ratio
- Long-reach capabilities
- Hexagonal booms for superior reach and maximum control
- Internal hose routing
- 15° overbending on outer boom

Options

- Radio remote control
- Various stabilizer configurations
- Double link arm system
- Boom mounted winch
- Floodlight on outer boom
- Boom tip functions for hydraulic attachments
- Oil cooler

Specifications

Stabilizer Pad Diameter	7" (175 mm)
Crane Storage Height	7' 6" (2295 mm)
Mounting Space^{***}	2' 11" (880 mm)
Rotational Torque	17,555 ft-lb (2.4 tm)
Rotation	400°
Optimum Pump Performance	14.5 gpm (55 L/min)
System Pressure	4350 psi (300 bar)
Oil Reservoir Capacity	23.8 gal (90 L)
Stabilizer Extension Span	
Standard (manual out/hydraulic down) Weight	18' 3" (5575 mm) 605 lb (275 kg)
Option (hydraulic out/hydraulic down) Weight	21' 2" (6455 mm) 785 lb (355 kg)

^{***} Maximum swing clearance radius required is 24" (600 mm) at 7' 10" (2375 mm) from top of chassis frame.

Minimum Chassis Specifications

Front Axle Rating (GAWR)	14,000 lb (6350 kg)
Rear Axle Rating (GAWR)	40,000 lb (18,145 kg)
Resistance to Bending Moment Minimum	1,850,000 in-lb (213,145 kg-m)

Hexagonal Boom Design

A wide hexagonal profile with large bearing surfaces ensures greater strength and stability for horizontal and vertical spans — even when working in extreme positions with long reaches. Plus, it's protected by powdercoat paint that never fades, flakes, or corrodes.



Internal Hose Routing

Fed internally through protective nylon drag chains or roller guides, all hoses are equipped with sturdy, high-pressure swivel couplings to prevent them from twisting.



Overbending

Overbending between the main boom and jib provides greater flexibility when working under power wires and more potential for high lifting in narrow passages. It also lowers the total height when the loader is stowed over the truck body.

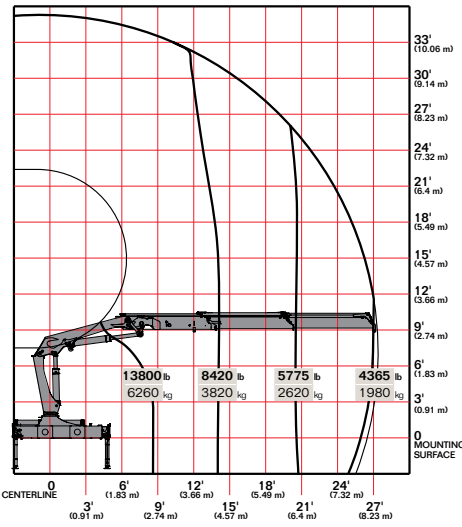


Stow Bracket Innovation

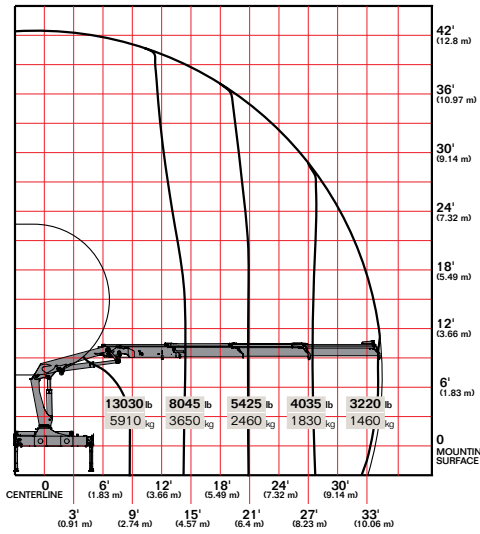
The stow bracket is designed to secure the boom for transport position but not allow for bracket damage. Unlike systems with rigid fixed brackets, the "J" hook will pivot if an incorrect movement is attempted.

▶ 18/124SL Capacity Charts

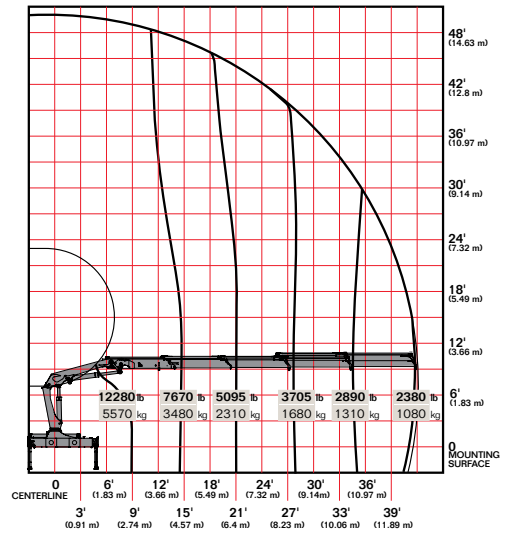
18/124SL K2



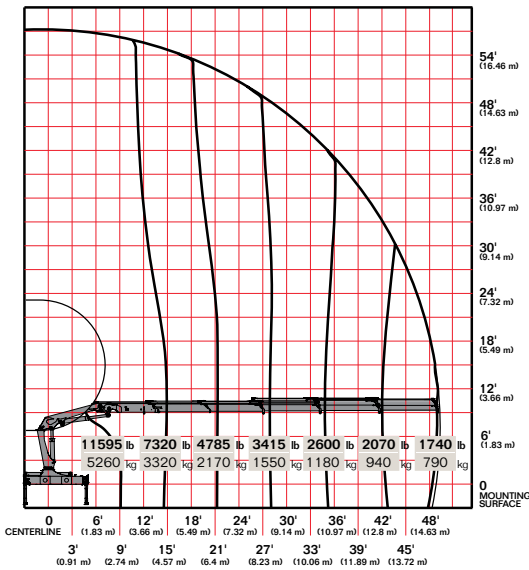
18/124SL K3



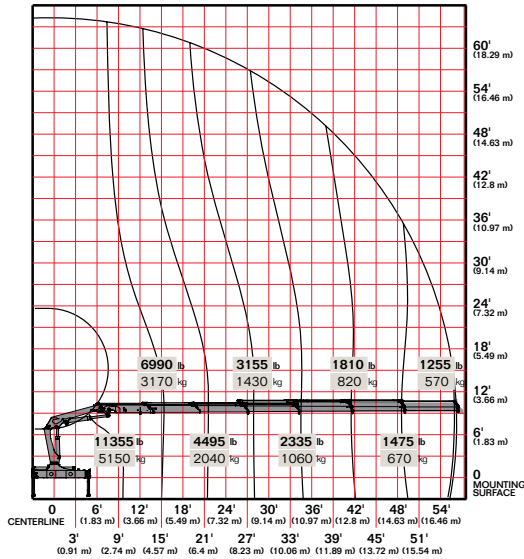
18/124SL K4



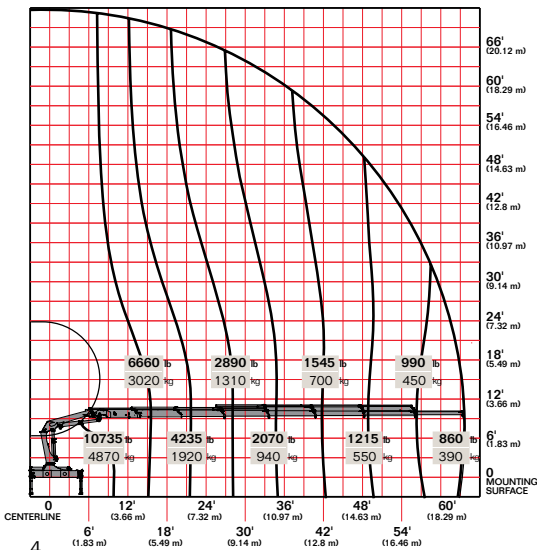
18/124SL K5



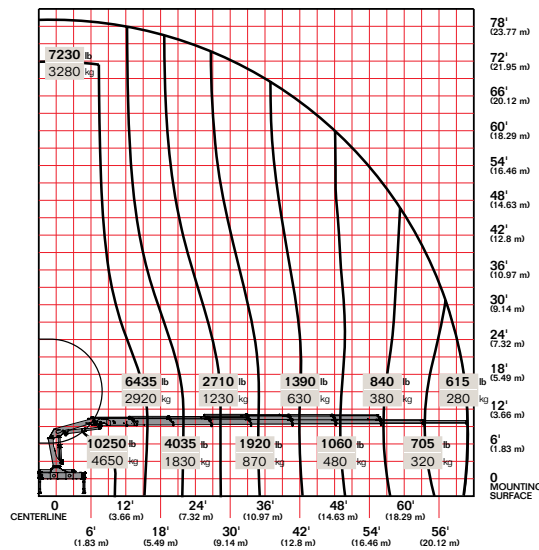
18/124SL K6



18/124SL K7



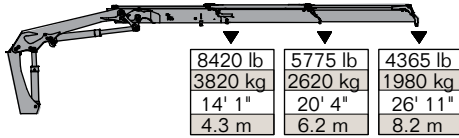
18/124SL K8



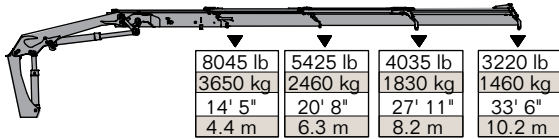
Limit working loads to those shown. Deduct the weight of load-handling devices.

► 18/124SL Lifting Capacity

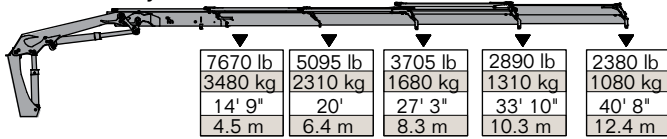
18/124SL - 2 Hydraulic



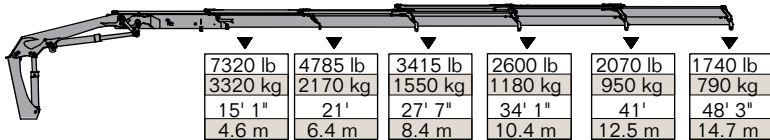
18/124SL - 3 Hydraulic



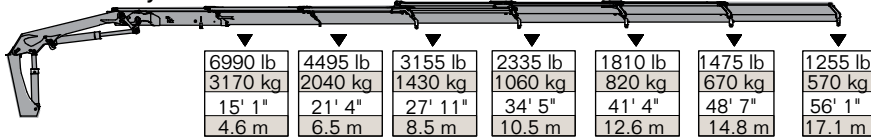
18/124SL - 4 Hydraulic



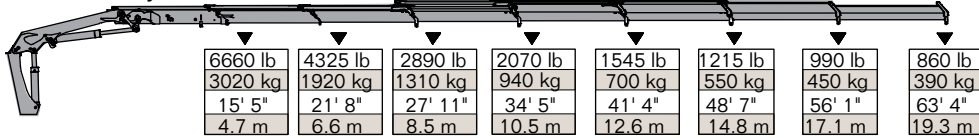
18/124SL - 5 Hydraulic



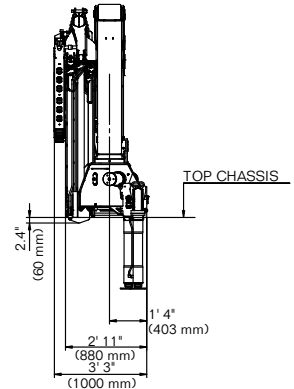
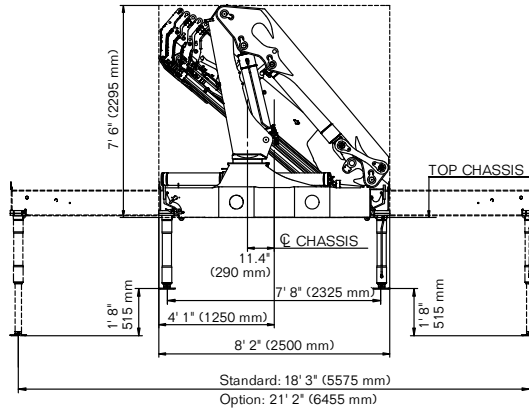
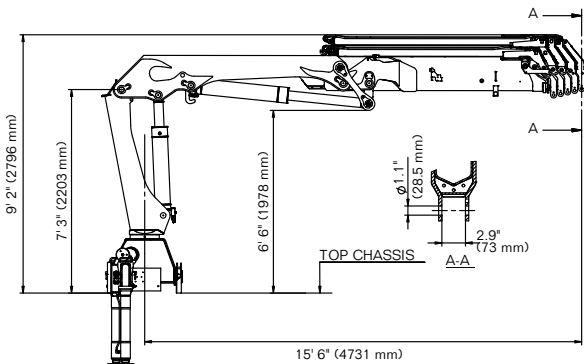
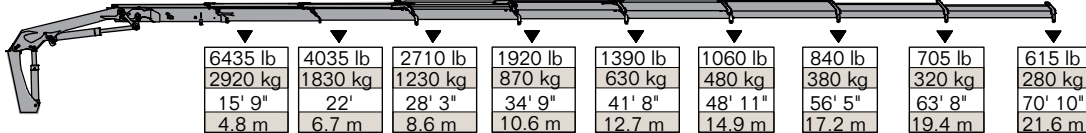
18/124SL - 6 Hydraulic



18/124SL - 7 Hydraulic

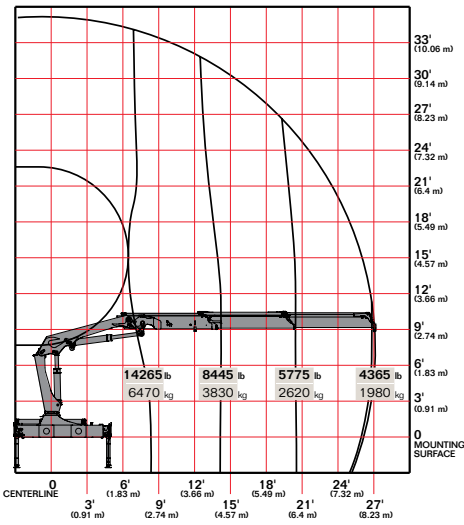


18/124SL - 8 Hydraulic

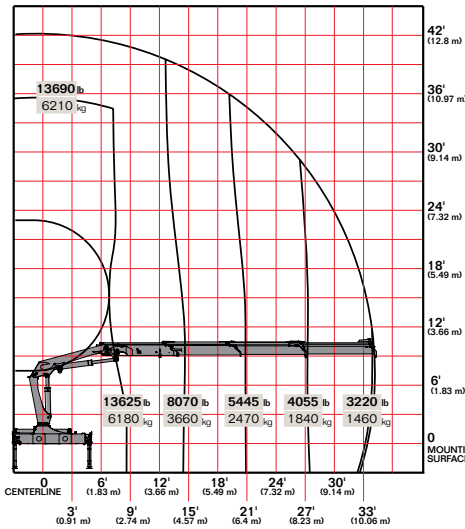


► 18/124DL Capacity Charts

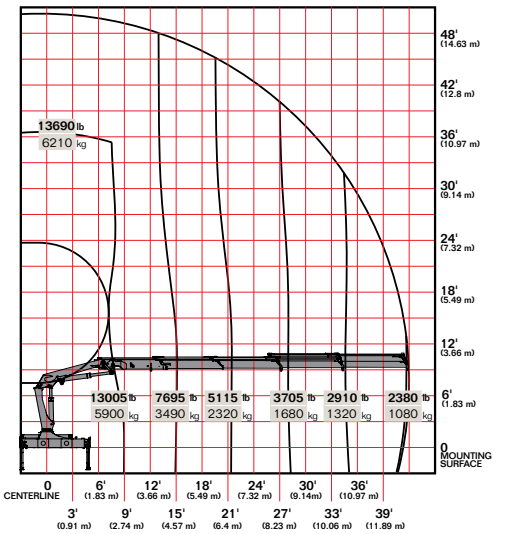
18/124DL K2



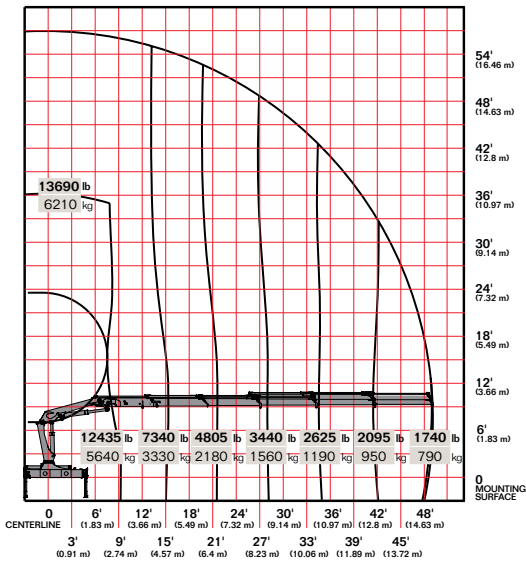
18/124DL K3



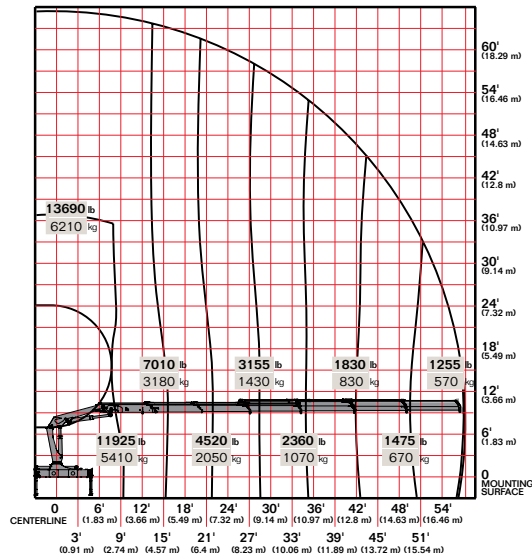
18/124DL K4



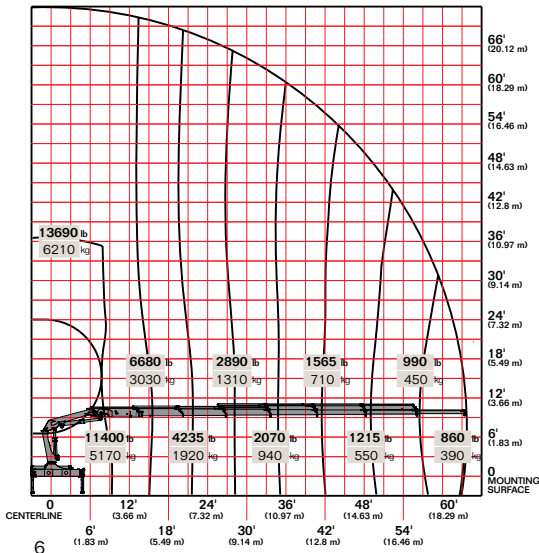
18/124DL K5



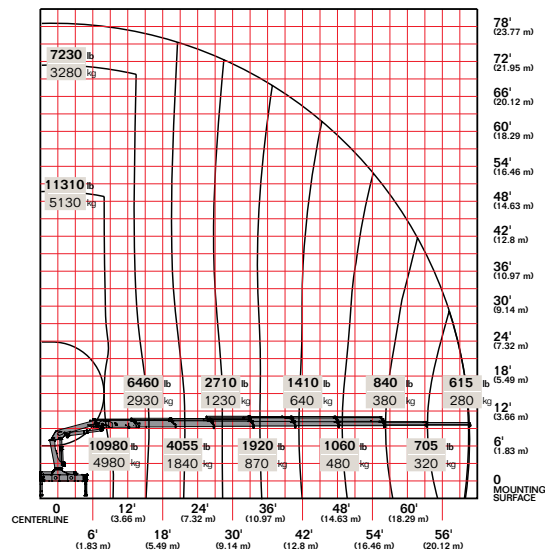
18/124DL K6



18/124DL K7



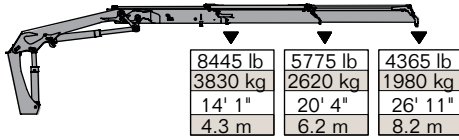
18/124DL K8



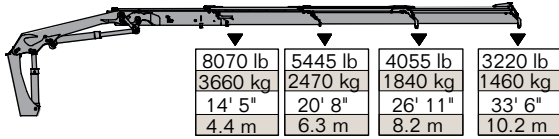
Limit working loads to those shown. Deduct the weight of load-handling devices.

► 18/124DL Lifting Capacity

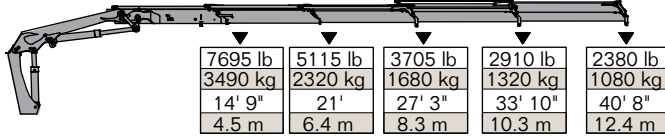
18/124DL - 2 Hydraulic



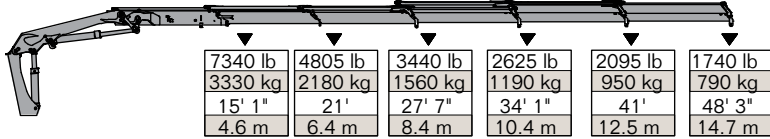
18/124DL - 3 Hydraulic



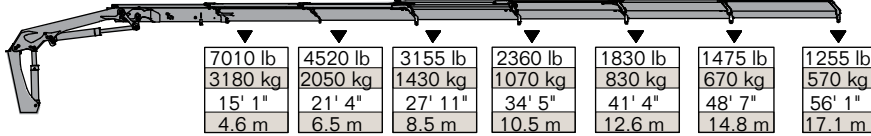
18/124DL - 4 Hydraulic



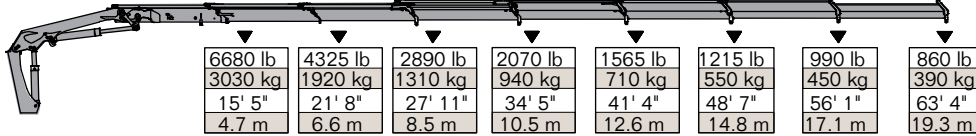
18/124DL - 5 Hydraulic



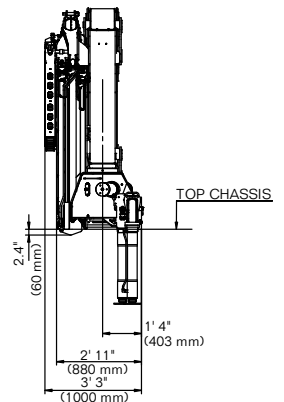
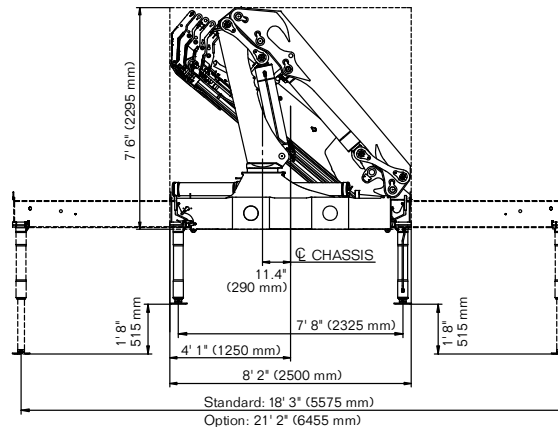
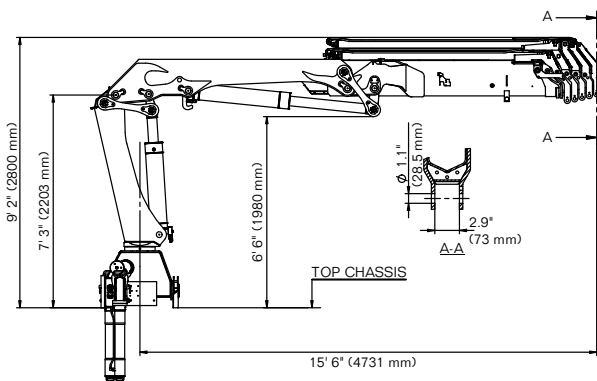
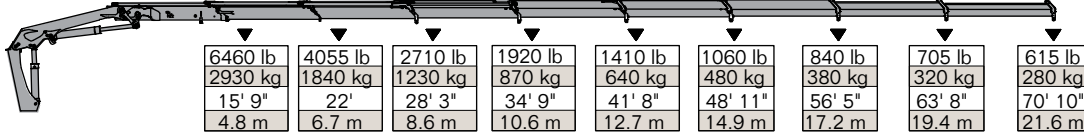
18/124DL - 6 Hydraulic



18/124DL - 7 Hydraulic



18/124DL - 8 Hydraulic



Power Source

- Standard integral-mounted piston hydraulic pump and PTO application

Cylinder Holding Valves

- Integral-mounted counterbalance valves or load-holding check valves
- Prevention of sudden cylinder collapse in case of hose failure

Rotation System

- 400 degree rack and pinion
- 17,555 ft-lb (2.4 tm) rotational torque
- Counterbalance valve on each cylinder to stop motion in case of hose failure

Hydraulic System

- Open-centered system — closed optional
- Regeneration system on extension cylinder to ensure quick deployment
- Hydraulic oil reservoir, air breather, replaceable return-line filter, and control valve with levers

Overload System

- Load-limiting capability for boom functions
- Rated capacity limitation (RCL) 5300 blocks load-increasing functions when full capacity is attained



Nothing Says Commitment Like The Diamond.™

IMT has been meeting the needs of our customers for over 50 years and none of it would have been possible without a distributor network that's second to none. IMT distributors offer fast, knowledgeable service and the ability to help customers find the right product for every application. When you're looking for reliable equipment and dependable service, remember IMT.



An Oshkosh Corporation Company

Iowa Mold Tooling Co., Inc.
500 Highway 18 West
Garner, Iowa 50438
800-247-5958 • www.imt.com

IMT reserves the right to make changes in engineering, design, and specifications; add improvements; or discontinue manufacturing at any time without notice or obligation. IMT, the IMT logo and NOTHING SAYS COMMITMENT LIKE THE DIAMOND are registered trademarks or trademarks of Iowa Mold Tooling Co., Inc., Garner, IA, USA.
© 2013 Iowa Mold Tooling Co., Inc. All Rights Reserved.