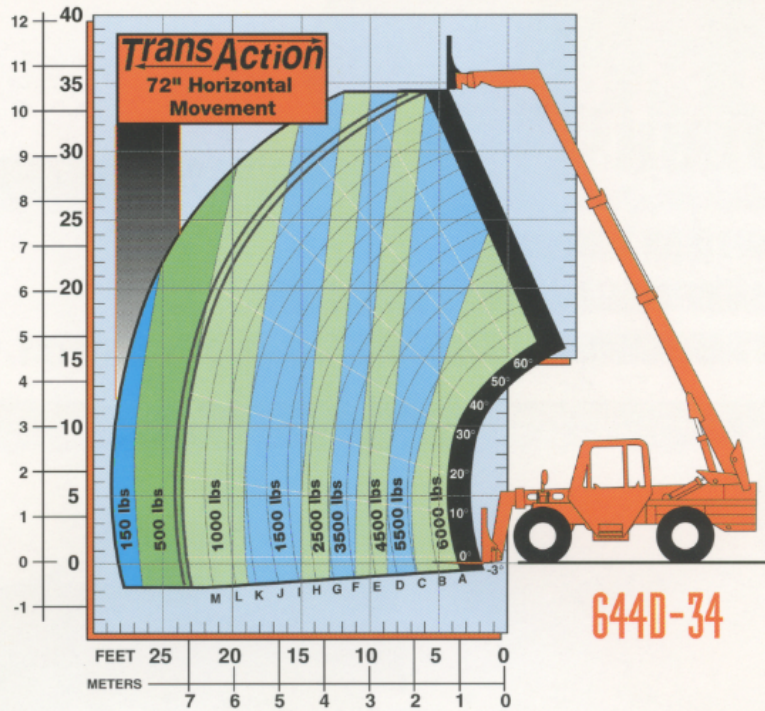


D-SERIES:

644D-34 Specifications



Load Chart

Capacity	6,000 lbs	(2729 KG)
Lift Height	34 ft.	(10.3 m)
Landing Height	34 ft.	(10.3 m)
Capacity @ Full Height	5,500 lbs.	(2720 KG)
TransAction	72 in.	(1.8 m)
Max. Horizontal Forward Reach	29 ft.	(8.8 m)
Reach Below Grade	16 in.	(406 mm)
Outside Turn Radius	11 ft. 7 in.	(3.5 m)
Max. Travel Speed	20 mph	(32 Km/hr)
Frame Leveling	10 degree	[L/R]

Performance

Height	101.5 in.	(2.6 m)
Length	205 in.	(5.16 m)
Width	96 in.	(2.44 m)
Wheel Base	118 in.	(3 m)
Ground Clearance	17 in.	(432 mm)
Weight	18,400 lbs.	(8363 KG)

Dimensions

Engine	Cummins 4BT3.9 Turbo 4 Cyl 85 HP (63 KW)
Transmission	3 Speed Powershift
Axles	Outboard Planetary
Brakes	Inboard Wet Disc
Tires	13.00 x 24, 10 Ply L2 Sure Grip Grader (no ballast required)

Drive Train

Options And Attachments

Options and Attachments add function and versatility to Lull machines.

Options

- Multiple tire options
- Standard fork carriages
- Side tilt carriages
- Hydraulic fork position carriages
- Enclosed cab options
- Light Packages
- Suspension seat

Attachments

- Truss boom
- Truss boom w/winch
- Auger
- Sweeper broom w/ bucket
- Concrete hopper
- 1 1/4 cu. yd. bucket



4 Wheel Drive	Yes
4 Wheel Steer, Round, Front & Crab	Yes
Automatic Fork Leveling	Yes
Multi-Function Joystick Control	Yes
Number of Boom Sections	3
Auxiliary Hydraulics to Boom End	Yes

Standard Features