

BAILEY *SPECIALTY CRANES & AERIALS*

9 TON CARRY DECK CRANE



CARRY DECK CONTROLS



HYBRID CHARGING ENGINE



BC-18 ***CRANE***

BATTERY POWERED WITH OPTIONAL HYBRID ENGINE

Capacity on Outriggers: 18,000 lbs

Pick & Carry Capacity: 11,700 lbs.

10 Foot Jib

Rated load Limiter

Non-Marking Tires

80 Volt Battery Power.

AC Traction Motors (Enclosed)

AC Pump Motor (Enclosed)

3 Section Boom - 100KSI High Strength

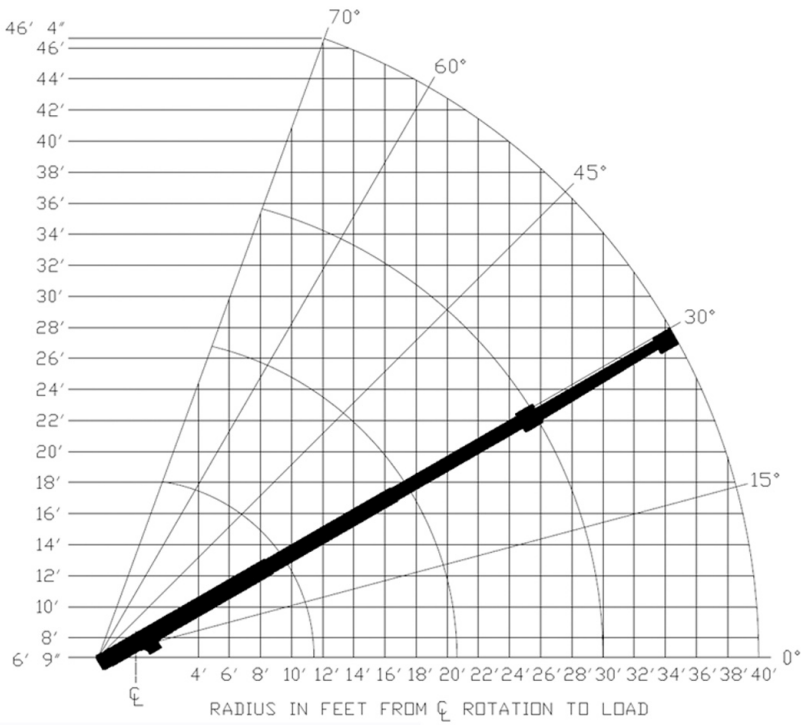
4 Wheel Steering

Weight: 20,000 Lbs

Independant Outrigger Controls

BATTERY WATERING CART





CAUTION: BOOM EXTENSION LOADS MUST NOT EXCEED MAIN BOOM CAPACITY. DO NOT PICK & CARRY WITH LOADS ON BOOM EXTENSION.

CAPACITIES ON OUTRIGGERS ARE 85% OF TIPPING LOADS. CAPACITIES ON RUBBER ARE 75% OF TIPPING LOADS. CAPACITIES BELOW BOLD LINE ARE LIMITED BY TIPPING. OTHER CAPACITIES ARE LIMITED BY STRUCTURAL OR HYDRAULIC CAPABILITY.

CAPACITIES APPLY TO OPERATION ON FIRM LEVEL SURFACE				
LOAD RADIUS FEET	MAIN BOOM OR EXTENSION CAPACITIES IN POUNDS			
	360 ROTATION		OVER FRONT	
	ON RUBBER	ON OUTRIGGERS	ON RUBBER	ON OUTRIGGERS
5	10000	17000	12000	18000
6	8000	14000	10500	14000
8	6000	10000	8700	10000
10	5000	7700	6600	7700
12	3800	6100	4800	6100
14	2700	5200	3650	5200
16	2100	4400	2900	4400
18	1700	3900	2350	3900
20	1400	3400	1900	3400
22	1200	3050	1700	3050
24	1100	2750	1450	2800
26	950	2450	1350	2550
28	850	2200	1300	2350
30	700	1950	1200	2150
32	450	1750	900	1950
34	350	1600	800	1800
36	350	1450	700	1650
38	200	1300	600	1500
40	150	1150	500	1400

10-FOOT BOOM EXTENSION				
MAIN BOOM ANGLE				
0°	30°	45°	60°	70°
2250	2600	3200	5000	7000

