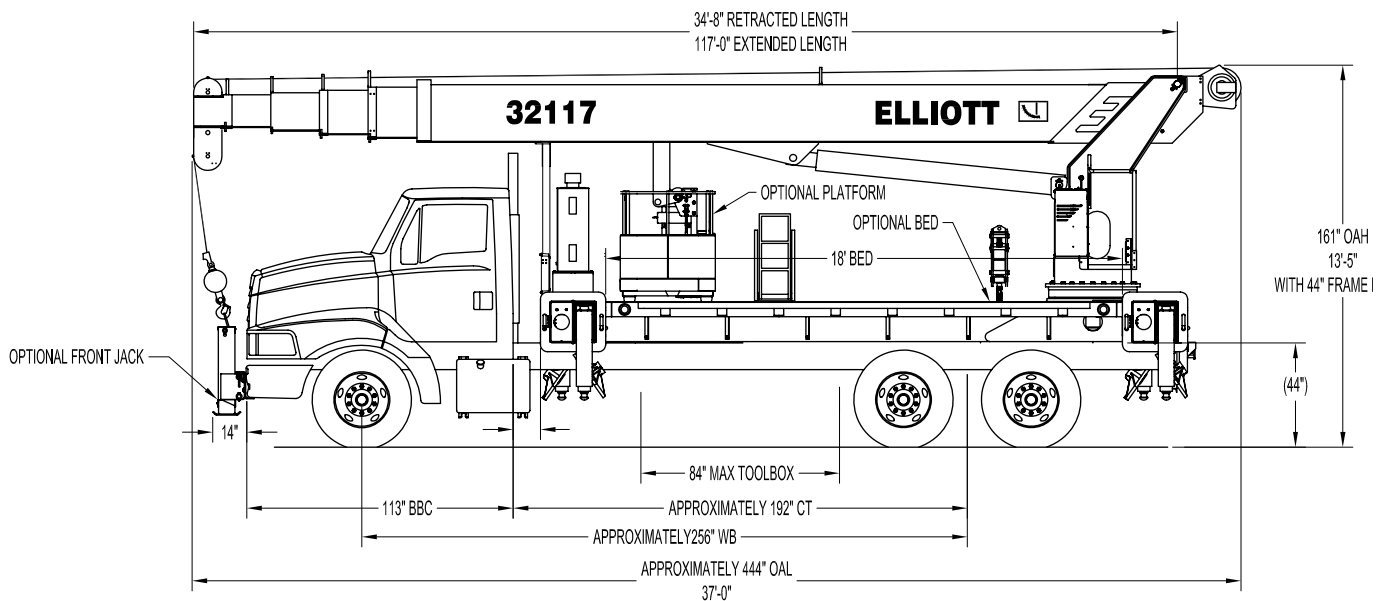


32117R SIDE VIEW DIAGRAM



- | | | | |
|----------------------------------|-------------------------------------|---------------------------------|------------------------------|
| • Maximum Vertical Reach | 153' / 46,6 m | • Powered Boom Sections | 5 |
| • Working Area | 180 Degrees Standard (360 Optional) | • Overall Height | 13'5" / 4,1 m |
| • Lifting Capacity | 64,000 lbs / 29 030 kg | • Operator Controls | Single-Side Rotating Standup |
| • Boom Length | 117' / 35,6 m | • Outrigger Type Front | Out-Down |
| • Crane Weight (Standard) | 30,800 lbs / 13 971 kg | • Outrigger Spread Front | 20' / 6 m |
| • Jib Lengths | 24' / 7,3 m | • Outrigger Type Rear | Out-Down |
| • Winch Bare Drum Pull | 12,800 lbs / 5806 kg | • Outrigger Spread Rear | 20' / 6 m |

TECHNICAL SPECIFICATIONS

Crane Capacity: 64,000 lbs at 5' load radius.

Maximum Tip Height: 129' height (153' with optional 24' jib)

Control Console: Rotating turret single operator standup control station equipped with four single axis control levers for the main crane controls. Operator station includes LMI display, bubble level gauge, engine start/stop switch, signal horn button, variable speed throttle switch, lifting capacity chart, range diagram chart, boom angle indicator, system pressure gauge, 12V DC power source, and cup holder. Independent ground level electric operated outrigger controls.

Boom: Five-section fully proportional, high strength steel plated rectangular tube sections. A maximum boom tip height of 129' mounted on a truck. The boom nose contains one floating upper sheave and three lower sheaves. Assembly includes heavy-duty cylinder fittings, pivot pins, and replaceable wear pads.

Winch: Mounted at the base of the boom for a long fleet angle and flat level spooling of cable. Winch is driven by a planetary reducer and powered by a hydraulic motor. Burst-of-speed winch provides increased line speed. The winch brake is spring applied, pressure release design. Supplied with 425' of 9/16" diameter rotation resistant wire rope with a single line pull of 9,060 pounds, and a downhaul ball with swivel hook for single part line.

Load Moment Indicator System:

System senses hoist cylinder pressures, boom length and boom angle with hydraulic function lockout. The display console is equipped with a bar graph showing crane utilization, boom angle or boom length, a mode select controls for main boom and jib operation, and an anti-two block with an audio/visual warning and shut-off functions to limit hook-boom point contact.

Elliott Equipment Company reserves the right to change the specification of any unit at any time without prior notice. This brochure is only a statement of general specifications on the date of this publication. For more detailed info on specific Elliott trucks go to www.elliottequip.com

Outriggers: Two sets of out and down overframe outriggers with 20' span. Outriggers are configured for full span or mid span operation. Outriggers equipped with ball socket aluminum removable pads that stow on vertical outrigger legs.

Frame: Full length, all welded rigid 4-plate design sub-frame. Sub-frame allows for bolt-on addition of 18' bed wings, with top plate of subbase serving as a portion of the bed deck, to form a three-piece bed.

Turret: Reverse offset turret is one-piece weldment. Turret rotates on large diameter ball bearing.

Rotation: Hydraulic motor drives turret through double reduction planetary swing drive for 372-degree non-continuous rotation.

Lift: One double-acting long stroke cylinder provides smooth and stable boom elevation. Holding valve prevents boom from falling in event of hose failure.

Boom Extension: Incorporates a 2-stage hydraulic extension cylinder, attached to the largest boom section, with a proportional cable extension system driving the outermost sections.

Hoses: All high pressure hoses are wire braid reinforced with a minimum safety factor of 4 to 1.

Cylinders: All cylinders use microhoned cylinder tubing, chrome shafts, top grade packing and protective rod wipers. Cylinder-mounted holding valves provided on all load-holding cylinders.

Hydraulic System: Equipped with air-shift PTO, piston pump, SAE O-ring face seals on pressure lines, and a 10-micron return line filter. The control valve distributes all flow to hoist system, swing circuit, and other crane functions. System is closed center type.

Oil Tank Capacity: 120 gallon mounted to truck frame on roadside.

Cab Equipment: PTO switch with indicator lights installed in truck cab. U/L approved 5:BC dry chemical fire extinguisher installed in truck cab.

Operators Manual & Video: Two CD copies and one hard copy of operation, maintenance, safety and parts manual provided with each unit. Operational and safety video provided at delivery.

Installation: Unit installed on chassis, painted, system and tank filled with oil, tested, inspected, and ready to operate.

Standard Paint: Paint turret and boom white, outriggers red, and bed and boxes black. Top of bed painted with black nonskid surface.

Bumper: Bureau of Motor Carrier Safety rear bumper.

Weight: Approximately 30,800 lbs. with 18' steel-floor bed less truck.

Truck Chassis Required: Approx. 204" C.A. RBM 3,300,000 in-lb. per rail, 20,000 lb. front axle and 60,000 lb. GVWR required. Trucks must have front frame extension, 12V electrical system with high capacity alternator, cab clearance stop/tail/backup lights, and I.D. lamps. Recommended GVWR is minimum for BoomTruck with flatbed only. Contact factory when additional equipment is to be added.

Options:

24' Fixed Jib.

Radio Remote Controls.

Gravity-Leveled and Rotating Steel Basket.

Tool Box Configurations.

Front Jack for 360 Degree Crane Operation.

Enclosed Control Cab with Heating and Air Conditioning.

Winch Drum Rotation Indicator.

Work Area Definition System (WADS).

Much More...

LOAD CHART - MAIN BOOM, FULL-SPAN OUTRIGGERS

DO NOT PAINT OVER ANY LABELS 1097740 101705



MODEL 3200 117-ft BOOM

MAIN BOOM LOAD RATINGS WITH FULLY EXTENDED OUTRIGGERS

MAIN BOOM LOAD RATINGS

JIB LOAD RATINGS

LOAD RATINGS IN lbs WITH OUTRIGGERS AND STABILIZERS EXTENDED

LOAD RATINGS IN lbs WITH OUTRIGGERS AND STABILIZERS EXTENDED

LOAD RADIUS IN FEET	LOADED BOOM ANGLE	28-ft	LOADED BOOM ANGLE	A	LOADED BOOM ANGLE	B	LOADED BOOM ANGLE	C	LOADED BOOM ANGLE	D	LOADED BOOM ANGLE	E	LOADED BOOM ANGLE	F
		42-ft		42-ft		57-ft		72-ft		87-ft		102-ft		117-ft
5	80	64,000												
6	78	54,000												
8	73.5	42,000												
10	69	35,000	76.5	28,000										
12	64	30,000	73.5	27,500	78.5	25,000								
14	59	26,500	70.5	25,000	76.5	23,600	80	20,000						
16	53.5	23,600	67.5	22,800	74.5	22,200	78.5	19,000						
18	47.5	20,000	64.5	20,400	72.5	20,600	77	18,200	80	16,100				
20	41	16,500	61	18,000	70	19,100	75	17,000	78	14,500				
25			52	14,000	64.5	14,300	71	14,000	75	13,000	78	11,800	79	7,200
30			42	10,000	58	10,950	66	11,000	71.5	11,200	75	10,200	77	7,200
35					52	8,650	62	8,800	68	8,850	72	8,900	75	7,200
40					45	7,000	57	7,100	64	7,200	69	7,250	72.5	7,200
45					36.5	5,600	52	5,800	60	5,900	65.5	5,950	69.5	6,000
50							46	4,750	56	4,850	62.5	4,900	67	4,950
55							40	3,900	55.5	4,000	59	4,000	64	4,100
60							32	2,800	47	3,200	55.5	3,250	61	3,250
65							22.5	2,400	42	2,600	51.5	2,750	58	2,750
70									36	2,000	47.5	2,150	54.5	2,150
75									29.5	1,400	43	1,600	51.5	1,650
80											38.5	1,000	47.5	1,200
85											33.5	800	44	800
90													40	500
0		8,500	0	4,700	0	2,600								



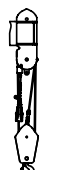
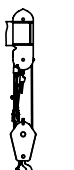

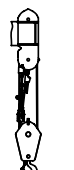

24-ft FIXED LENGTH JIB		
LOAD RADIUS IN FEET	LOADED BOOM ANGLE	24-ft JIB
30	79	4,000
35	77	3,900
40	75	3,750
45	73	3,450
50	71	3,050
55	68.5	2,650
60	66.5	2,350
65	64	2,050
70	62	1,850
75	59.5	1,650
80	57	1,450
85	54.5	1,150
90	51.5	800
95	48.5	500

NOTICE

- DO NOT DEADHEAD LINE BLOCK AGAINST BOOM TIP WHEN EXTENDING BOOM.
- KEEP AT LEAST 5 WRAPS OF LOADLINE ON THE WINCH DRUM AT ALL TIMES.
- USE ONLY 9/16" DIAMETER WIRE ROPE, AS SPECIFIED BELOW, WITH THE PROPER BREAKING STRENGTHS LISTED.
- ANTI-TWO-BLOCK SYSTEM MUST BE IN GOOD OPERATING CONDITION BEFORE OPERATING CRANE. SEE OPERATION & SAFETY MANUAL.

DEDUCTIONS FOR STOWED JIB (lbs)	550	350	300	250	200	150	100
---------------------------------	-----	-----	-----	-----	-----	-----	-----

DEDUCTIONS FOR STOWED FIXED LENGTH JIB (lbs)

1-PART LINE 	2-PART LINE 	3-PART LINE 	4-PART LINE 	5-PART LINE 	6-PART LINE 	7-PART LINE 
MAX PULL: 9,060 lbs	18,120 lbs	27,180 lbs	36,240 lbs	45,300 lbs	54,360 lbs	64,000 lbs

ELLIOTT EQUIPMENT CO. SUPPLIED LOADLINE EQUIPMENT DEDUCTIONS:
 DOWNSHAUL WEIGHT180 lbs
 ONE SHEAVE BLOCK.....375 lbs
 TWO SHEAVE BLOCK.....640 lbs
 THREE SHEAVE BLOCK.....870 lbs
 AUXILIARY SHEAVE.....100 lbs

9/16" - SPIN RESISTANT (5:1 S.F.)
 45,300-lbs, BREAKING STRENGTH

CRANE MEETS ASME B30.5 REQUIREMENTS AT TIME OF MANUFACTURE



Elliott Equipment Company Phone: 402-592-4500
 4427 South 76th Circle Fax: 402-592-4553
 Omaha, NE 68127 Email: sales@elliottequip.com

Built for You.
 www.elliottequip.com

LOAD CHART - MAIN BOOM, MID-SPAN OUTRIGGERS



MODEL 3200 117-ft BOOM

MAIN BOOM LOAD RATINGS WITH OUTRIGGERS AT MID-SPAN POSITION

MAIN BOOM LOAD RATINGS

JIB LOAD RATINGS

LOAD RATINGS IN lbs WITH OUTRIGGERS AND STABILIZERS EXTENDED

LOAD RATINGS IN lbs WITH OUTRIGGERS AND STABILIZERS EXTENDED

LOAD RADIUS IN FEET	LOADED BOOM ANGLE	28-ft	LOADED BOOM ANGLE	A 42-ft	LOADED BOOM ANGLE	B 57-ft	LOADED BOOM ANGLE	C 72-ft	LOADED BOOM ANGLE	D 87-ft	LOADED BOOM ANGLE	E 102-ft	LOADED BOOM ANGLE	F 117-ft
5	80	64,000												
6	78	54,000												
8	73.5	42,000												
10	69	35,000	76.5	28,000										
12	64	30,000	73.5	27,500	78.5	25,000								
14	59	26,500	70.5	25,000	76.5	23,600	80	20,000						
16	53.5	21,700	67.5	22,500	74.5	22,200	78.5	19,000						
18	47.5	16,800	64.5	17,500	72.5	18,000	77	18,200	80	16,100				
20	41	13,500	61	14,000	70	14,500	75	14,800	78	14,500				
25			52	8,800	64.5	9,200	71	9,400	75	9,500	78	9,500	79	7,200
30			42	5,800	58	6,150	66	6,300	71.5	6,400	75	6,450	77	6,500
35					52	4,200	62	4,350	68	4,450	72	4,500	75	4,550
40					45	2,850	57	3,000	64	3,100	69	3,150	72.5	3,150
45					36.5	1,800	52	2,000	60	2,100	65.5	2,100	69.5	2,150
50							46	1,200	56	1,300	62.5	1,350	67	1,350
	0	5,000	0	2,000										

24-ft FIXED LENGTH JIB		
LOAD RADIUS IN FEET	LOADED BOOM ANGLE	24-ft JIB
30	79	4,000
35	77	3,900
40	75	2,850
45	73	1,850
50	71	1,100
55	68.5	500

NOTICE

- DO NOT DEADHEAD LINE BLOCK AGAINST BOOM TIP WHEN EXTENDING BOOM.
- KEEP AT LEAST 5 WRAPS OF LOADLINE ON THE WINCH DRUM AT ALL TIMES.
- USE ONLY 9/16" DIAMETER WIRE ROPE, AS SPECIFIED BELOW, WITH THE PROPER BREAKING STRENGTHS LISTED.
- ANTI-TWO-BLOCK SYSTEM MUST BE IN GOOD OPERATING CONDITION BEFORE OPERATING CRANE. SEE OPERATION & SAFETY MANUAL.

DEDUCTIONS FOR STOWED JIB (lbs)	550	350	300	250	200	150	100
---------------------------------	-----	-----	-----	-----	-----	-----	-----

DEDUCTIONS FOR STOWED FIXED LENGTH JIB (lbs)

1-PART LINE	2-PART LINE	3-PART LINE	4-PART LINE	5-PART LINE	6-PART LINE	7-PART LINE
MAX PULL: 9,060 lbs	18,120 lbs	27,180 lbs	36,240 lbs	45,300 lbs	54,360 lbs	64,000 lbs

ELLIOTT EQUIPMENT CO. SUPPLIED LOADLINE EQUIPMENT DEDUCTIONS:
 DOWNHAUL WEIGHT180 lbs
 ONE SHEAVE BLOCK.....375 lbs
 TWO SHEAVE BLOCK.....640 lbs
 THREE SHEAVE BLOCK.....870 lbs
 AUXILIARY SHEAVE.....100 lbs

9/16" - SPIN RESISTANT (5:1 S.F.)
 45,300-lbs. BREAKING STRENGTH

CRANE MEETS ASME B30.5 REQUIREMENTS AT TIME OF MANUFACTURE

DO NOT PAINT OVER ANY LABELS

1097740 101705



Elliott Equipment Company
 4427 South 76th Circle
 Omaha, NE 68127
 Phone: 402-592-4500
 Fax: 402-592-4553
 Email: sales@elliottequip.com

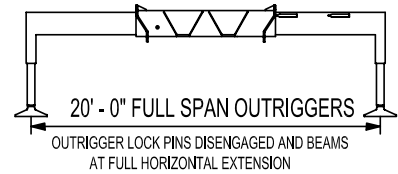
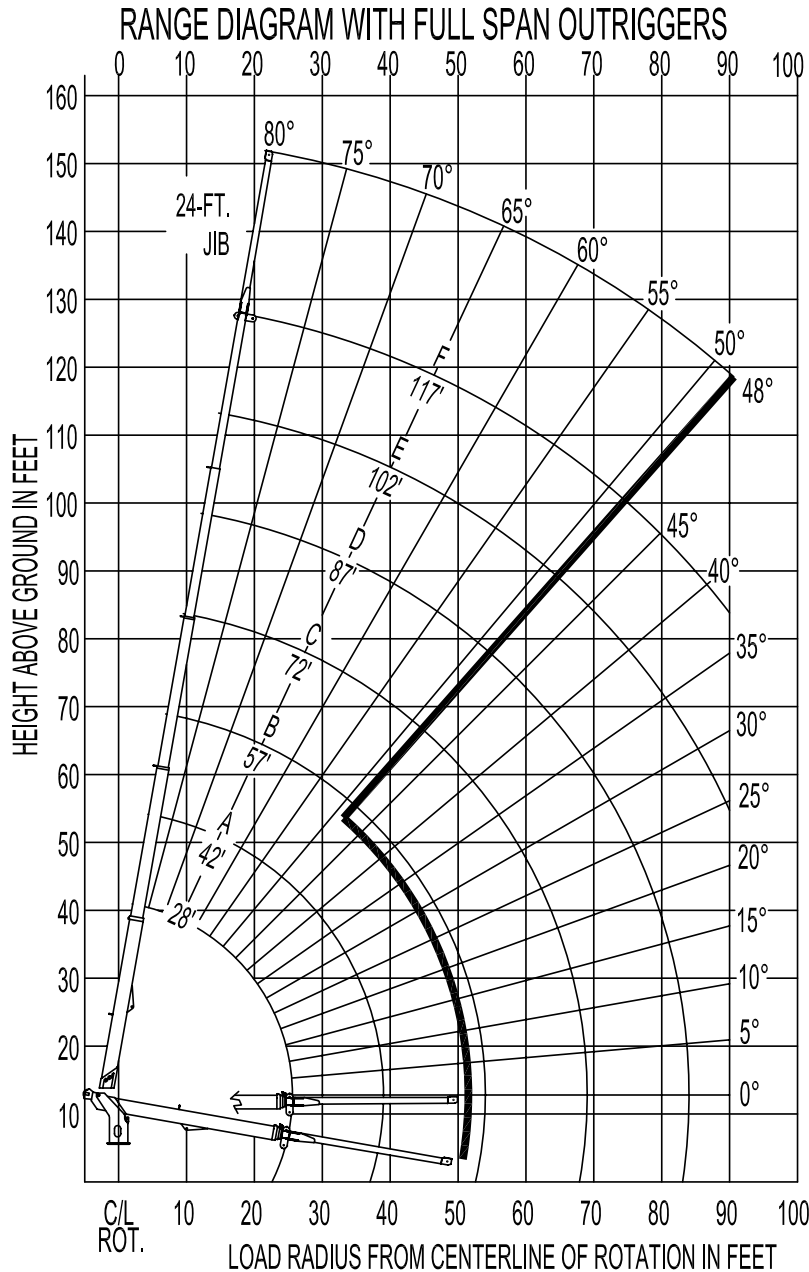
Built for You.
www.elliottequip.com

RANGE CHART - MAIN BOOM + JIB, FULL-SPAN OUTRIGGERS



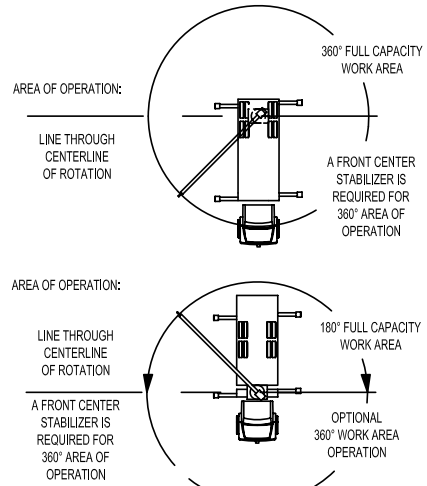
MODEL 3200

117-ft BOOM



NOTE:

1. Operate jib by radius when main boom is fully extended. Increase boom angle if necessary to maintain load radius.
2. When boom is retracted, operate jib by boom angle. Do not exceed any rated jib capacities at reduced boom lengths.
3. Capacities do not exceed 85% stability.
4. Load ratings above bold line are structurally limited.
5. Personnel handling is allowed only with full span outriggers.
6. Boom load ratings are based on loaded boom radius. Loaded boom angles are given as reference only.



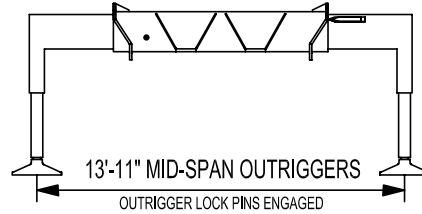
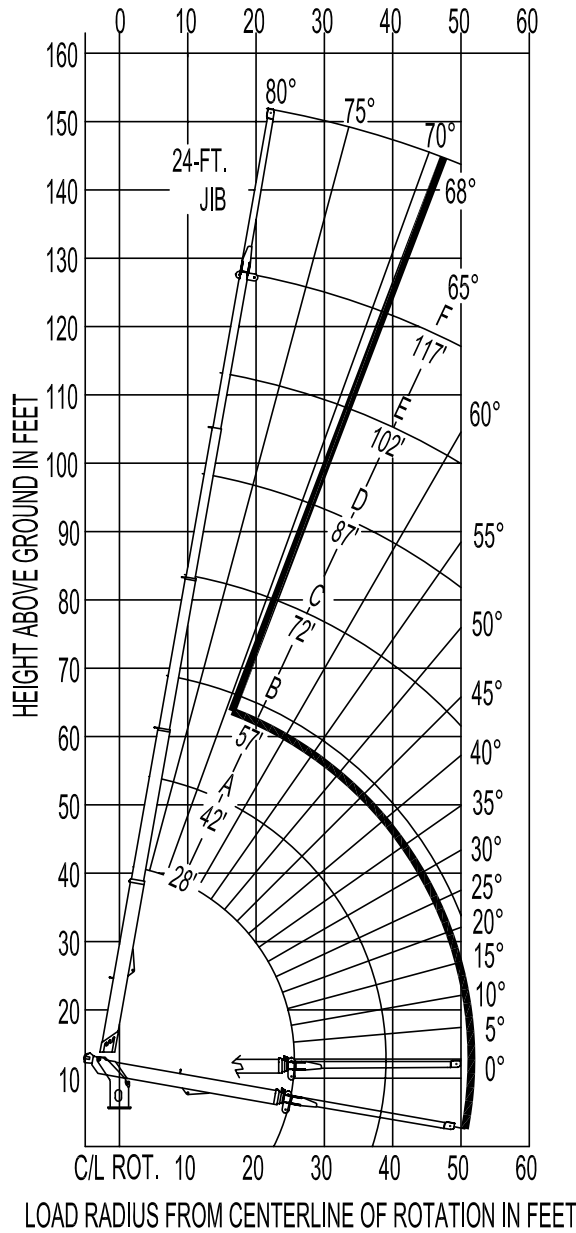
DO NOT PAINT OVER ANY LABELS 1097740 101705

LOAD CHART - MAIN BOOM + JIB, MID-SPAN OUTRIGGERS



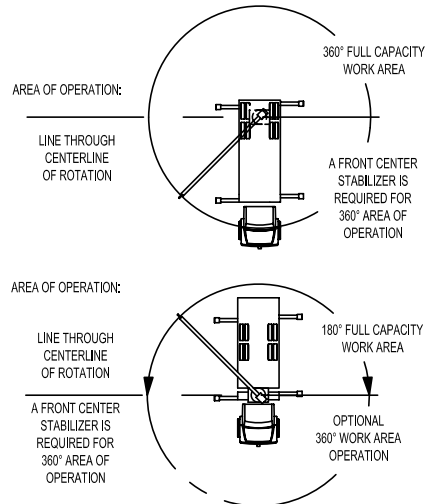
MODEL 3200 117-ft BOOM

RANGE DIAGRAM WITH MID-SPAN OUTRIGGERS



NOTE:

1. Operate jib by radius when main boom is full extended. Increase boom angle if necessary to maintain load radius.
2. When boom is retracted, operate jib by boom angles. Do not exceed any rated jib capacities at reduced boom lengths.
3. Capacities do not exceed 85% stability.
4. Load ratings above bold line are structurally limited.
5. Personnel handling is allowed only with full span outriggers.
6. Boom load ratings are based on loaded boom radius. Loaded boom angles are given as reference only.



DO NOT PAINT OVER ANY LABELS

1097740 101705

TRUCK CHASSIS SPECIFICATIONS

	32117R BoomTruck
Wheelbase (WB)	268" / 681 cm
Cab to Tandem (CT)	204" / 518 cm
Cab to End of Frame (EOF)	334" / 594 cm
Frame Section Modulus	30.0 in3-110,000 psi / 492 cm3-758,428 kPa
Front Axle Gross Weight Rating	20,000 lb / 9071 kg
Rear Axle Gross Weight Rating	40,000 lb / 18 143 kg
Integral Front Frame Rails	Required for Front Stabilizer

Chassis data is minimum general requirements-not for engineering.
 Actual dimensions and truck data will depend on truck selection and axle configuration.
 *Minimum chassis weight is required to meet 85% stability requirements.

OPTIONS



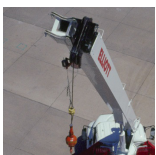
Radio Remote Control

Interference protected radio remotes let you get closer to your work and have full control over your machine. Includes battery charging feature and optional LMI screen.



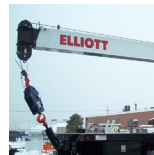
Enclosed Operator Cab

Optional tool boxes and bed storage can accommodate any storage need for tools, work materials and more.



Pin-On Jib Attachment

One piece fixed jib that stow on the side of the boom for easy placement while on the worksite.



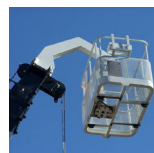
Hook Block for Multi-Part Line

Elliott can install a 4 part hook block or a 7-8 part-hook block to improve lifting capabilities. The block can be stored at the rear of the bed.



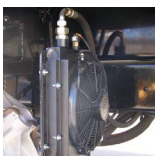
360 Degree Area of Operation

Add the convenience of 360 degree area of operation by adding a front stabilizer for working around the entire crane.



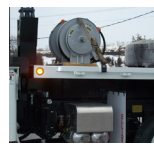
Gravity Levelled Basket

Elliott's pin-on work platform pins onto the boom for easy installation and removal. Gravity leveling and mechanical rotation makes it a great accessory for any worksite.



Hydraulic Oil Cooler

Add a bed-mounted hydraulic oil cooler and fan to assist with high duty cycle job applications. A "must" for hot weather environments



Body Mounted Hose Reels and Circuits

Let us work with you to customize your tool compatability by adding hose reels or hydraulic circuits to the crane bed.