

# RTG 80130

SERIES II

## Rough Terrain Crane 130-ton (120.0 mt)

- 41.4 ft to 162 ft (12.6 - 49.3 m) five-section formed full power latching boom with no charted capacity deductions for telescoping loads
- Five boom extend modes provided superior capacities: EM1-EM5
- Optional 31 ft to 55 ft (9.4 - 16.7 m) two-piece, bi-fold, on-board lattice attachment with 2°, 15° 30°, and 45° manual offsets
- Optional 10 - 31 - 55 ft (3.0 - 9.4 - 16.7 m) three-piece, bi-fold, on-board lattice attachment with 2°, 15° 30°, and 45° manual offsets, and 2° through 45° hydraulic offsets
- Optional three 18 ft (5.5 m) fly extensions plus 55 ft (16.7 m) provide a total attachment length of 109 ft (33.2 m)
- 278 ft (84.7 m) maximum tip height
- No deducts for stowed attachments
- 21,022 lbs (9 535.4 kg) maximum winch line pull
- 431 fpm (131.4 m/min) maximum winch line speed
- Electronic joystick controllers
- 6x2 and 6x6 drive with 23.5R25 tires
- Four steering modes: independent front, combination, crab, and independent rear
- Hydrostatic drive
- Fully independent double "A" arm hydraulic suspension

**Link-Belt**  
C R A N E S





# RTG 80130

SERIES II

## Rough Terrain Crane 130-ton (120.0 mt)

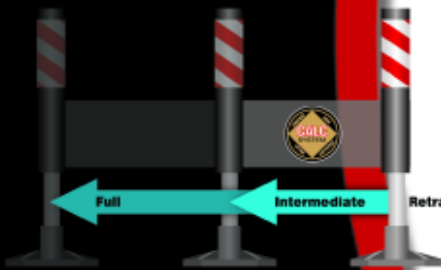
The industry's most innovative solution to big rough terrain crane maneuverability and transportability!

- Revolutionary hydrostatic drive on a six-wheeled carrier for the ultimate in job site mobility
- Unprecedented transportability
- Maneuverability redefined
- Over 45 tons (40.8 mt) of on-tire capacity

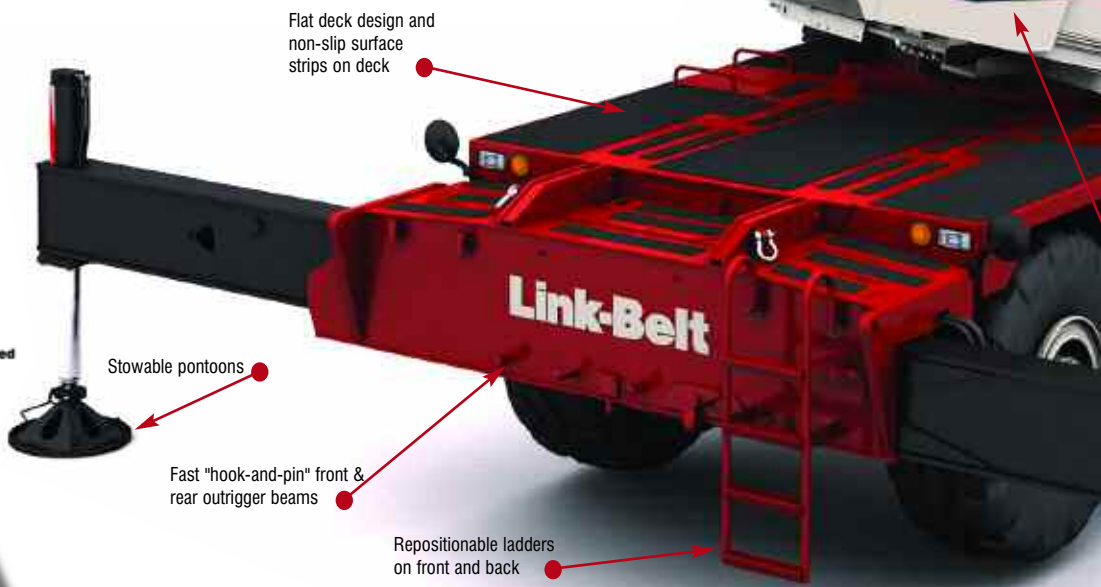


The reach of the optional 55' (16.8 m) two or three-piece offsettable, bi-folding fly can be extended by adding three optional 18' (5.5 m) inserts

**Link-Belt**  
CRANES



CALC—Outrigger beams extend to three different positions (retracted, intermediate, and fully extended) providing lifting capacities in confined areas



Flat deck design and non-slip surface strips on deck

Stowable pontoons

Fast "hook-and-pin" front & rear outrigger beams

Repositionable ladders on front and back

Mechanical boom angle indicator—standard

Tilting cab 20°

Complete lighting package

Independent front



Independent rear



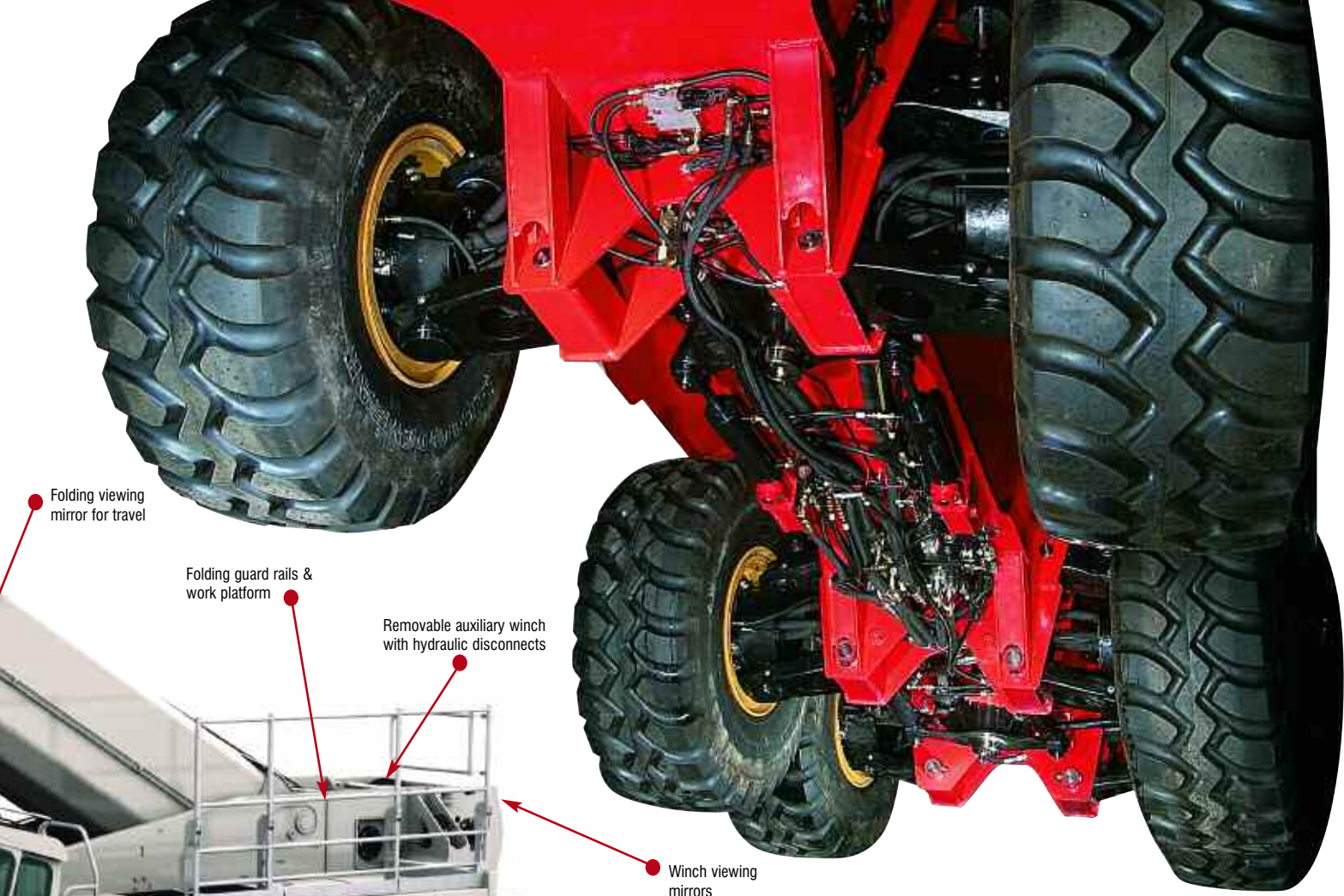
Coordinated six wheel drive



Six wheel "crab"







Folding viewing mirror for travel

Folding guard rails & work platform

Removable auxiliary winch with hydraulic disconnects

Winch viewing mirrors



80130

Partial counterweight and no counterweight charts

Catwalks on both sides of upper

23.5R25 radial tires

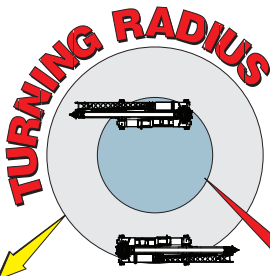
### Revolutionary hydrostatic drive on a 6-wheel carrier

Not only is this crane easy to get from jobsite to jobsite, it also has extraordinary creep control and jobsite maneuverability, thanks to its hydrostatic powered motors in each wheel. The smaller tires give it an overall height that is ideal for hauling, along with its' individual six-wheel hydrostatic drive, there is no crane in the world, any size, that can come close to the job site maneuverability and performance of the RTC-80130 Series II.

On the job, the RTC-80130 Series II has outstanding on-tire capacity coupled with its long reach, maneuverability, incredible gradeability and low height make it truly an ideal solution for industrial sites.



Pullout Cabwalk™



**2 wheel steer**  
 <42' (12.8 m)

**6 wheel steer**  
 <22' (6.7 m)

Because of the innovative 6x6 hydrostatic drive/steer on each wheel, the turning radius of the 28' 10" (9.1 m) long carrier is a remarkable 21' 10" (6.6 m).





## Powerful hydraulics

- Removable auxiliary (rear) winch has hydraulic quick disconnects
- For greater productivity and control, multiple pump hydraulic circuit allows **simultaneous function**
- Piston winch motor provides **smooth and precise hoisting**
- Main and available auxiliary winch are equally matched in size and performance
- Provisions for the future installation of the auxiliary winch are standard



## Operator cab features

- **Extra large windows** throughout for excellent visibility
- **Excellent ventilation** via a large sliding door, side and rear windows, and hinged roof window
- **6-way adjustable power tilting seat**
- Single or dual axis, **electronic operated controller** mounted on armrest for outstanding operator comfort
- All gauges, switches, indicators, and controls are located in the operator's forward line of sight
- All gauges and switches are backlit for excellent visibility in low light conditions
- **Integral rated capacity limiter** aids operator in safe and efficient operation
- In cab comfort is maintained by the **standard heater**
- Available - Internal and external rated capacity limiter light bars
- Available - cab mounted warning lights

cut here  
↓



↑ Swing-out doors provide exceptional access to engine components.

↓ → Access is superb with strategically-located ladders, steps, catwalks and CabWalk.





# Full power boom with attachment flexibility

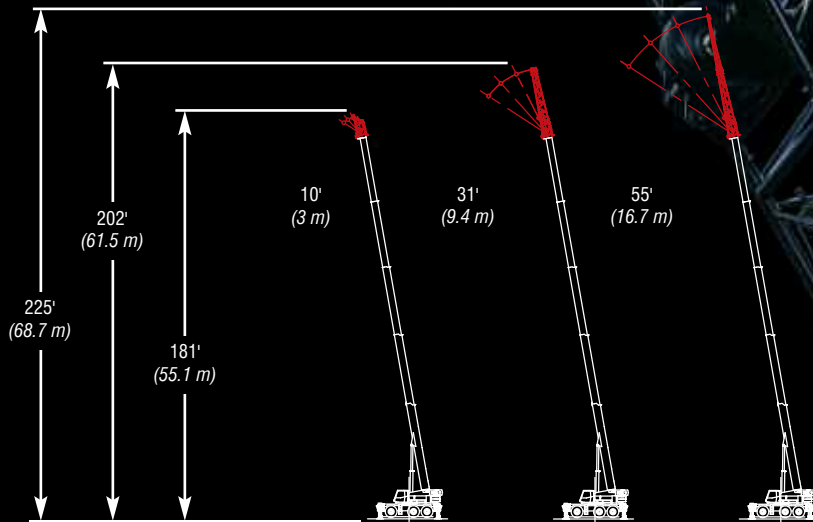
- Quick reeve boom head eliminates the need to remove the bucket when it becomes necessary to change the reeving
- Five extend modes for superior capacities throughout the extension range
- Available two or three-piece bi-folding lattice fly which allow the tip section to be stored, thus enhancing the lifting performance when using the base section
- Boom requires no greasing because of ingenious Teflon wear pucks impregnated in the full contact wear pads
- Two available offset fly options: manual offset with 2°, 15°, 30°, and 45°, and a hydraulic offset with 2° - 45° with no capacity deduction for luffing loads
- No deducts for stowed attachments



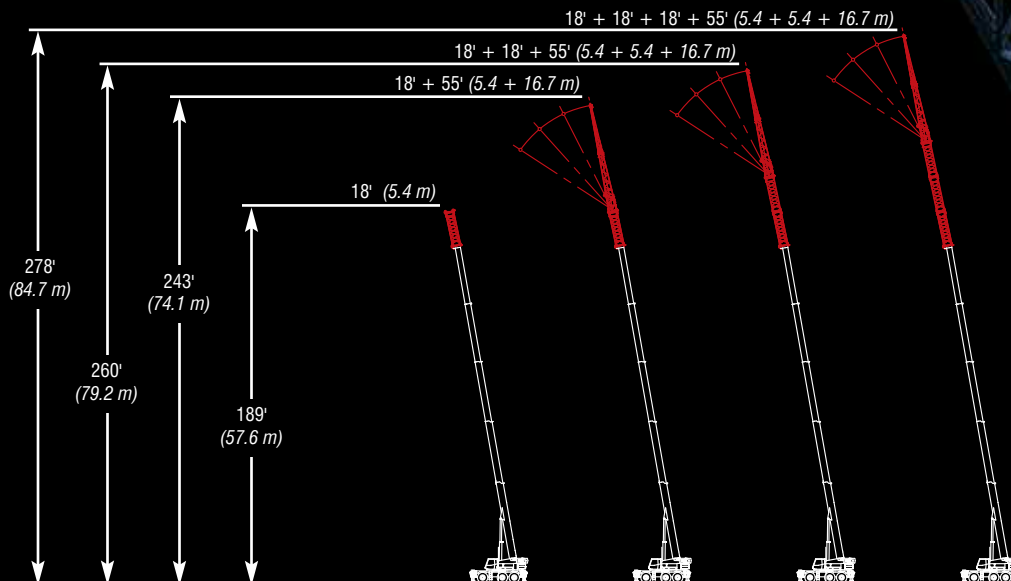
Innovative 10 ft (3.0m) fly is integral to one of the on-board fly options. Over 25 tons (22.6 m) capacity and one-load two-line lift procedures.

## Optional Lattice Fly Onboard

cut here



## Optional Lattice Fly Extension





## Breakthrough transportability

- Unlike any other rough terrain crane in this class, in less than an hour and without a helper crane, the RTC-80130 Series II is ready for transport.
- Unlike other big RT's, the tires do not need to be removed for transport.
- Only the counterweights and outrigger boxes need to be removed to get the crane's vehicle width under 10' (3.05 m).
- Because it is under 10' (3.05 m) wide and features a low overall height, the RTC-80130 Series II transports easier than the competition.



**Link-Belt Construction Equipment Company is a leader in the design, manufacture, and sales of telescopic and lattice boom cranes with headquarters and manufacturing facilities in Lexington, Kentucky, USA. Link-Belt is committed to the manufacture and service of high quality products that satisfy customers worldwide.**

Towards that end, Link-Belt has pursued a strategy of growth and investment. It has moved aggressively to seize more global market share by producing a broader range of products and with a strengthening distribution and personnel around the globe.

Link-Belt is also home to a family of passionate professionals with a legacy of innovation and cutting-edge technology spanning over 135 years. These professionals, in a 740,000 sq. ft. (68 748 m<sup>2</sup>) manufacturing facility and with a culture of continuous innovation, have pushed Link-Belt to be the most modern crane manufacturer in North America.

**Link-Belt**  
CRANES



Lexington, Kentucky  
[www.linkbelt.com](http://www.linkbelt.com)

© Link-Belt is a registered trademark. Copyright 2009. All rights reserved. We are constantly improving our products and therefore reserve the right to change designs and specifications.

Litho in U.S.A. 10/12 #4411 (supersedes #4367)

