

Mobile Crane Grue mobile

LTM 1750-9.1

Supplement to technical data sheet LTM 1750-9.1
Supplément au descriptif LTM 1750-9.1



LIEBHERR

Lifting capacities Forces de levage

TY

89 - 171 ft
10°
360°
449700 lbs
85%

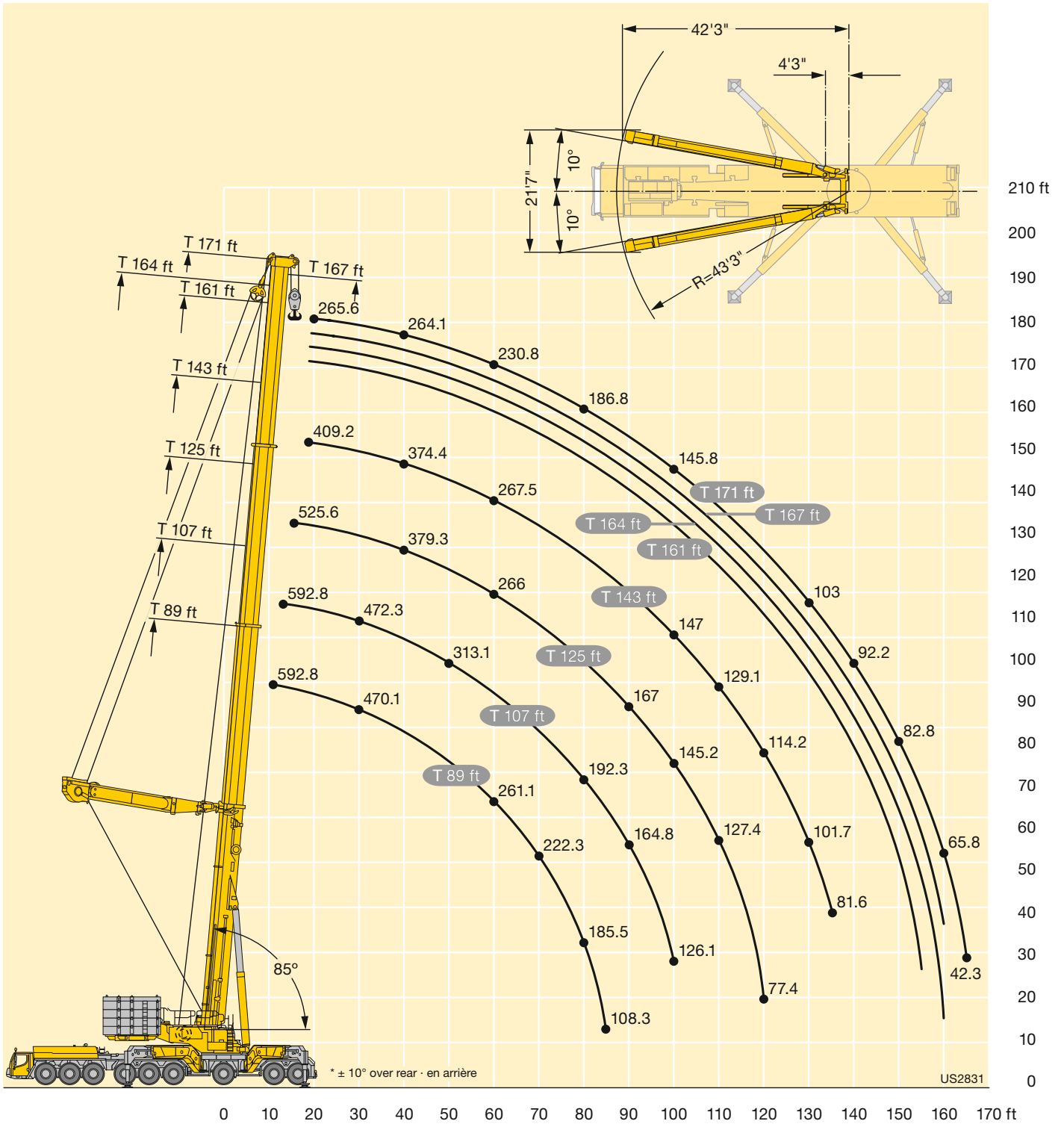


ft	89 ft	107 ft	125 ft	143 ft	161 ft	164 ft	167 ft	171 ft	ft
11	592.8								11
12	592.8								12
13	592.8	592.8							13
14	592.8	592.8							14
15	592.8	592.8	525.6						15
16	592.8	592.8	531.6						16
17	592.8	592.8	534	409.2					17
18	592.8	592.8	535.4	410					18
19	592.8	591.9	536.5	410.5	308.9	293	279.4		19
20	592.8	589.3	537.4	410.9	308.9	293.1	280.1	265.6	20
22	579.8	577	539.4	411.7	308.9	293.3	280.6	265.8	22
24	549.5	551.5	533.5	412.6	308.9	293.5	281.2	266	24
26	520.6	522.6	513.7	412.9	308.9	293.7	281.8	266.2	26
28	494.1	496.3	490.4	411.4	308.8	293.9	282.3	266.4	28
30	470.1	472.3	468.9	409	307.5	293.5	282.6	266.5	30
32	448.4	450.4	449	406.7	305.5	293.1	281	266.5	32
34	427.8	430.3	430.4	404.3	303.5	291.9	279.3	266.5	34
36	409.3	411.7	412.4	399.2	301.6	290.4	277.6	266.5	36
38	392	394.7	395.2	388.6	299.6	288.5	275.9	265.4	38
40	375.8	378.6	379.3	374.4	297.6	286.7	274.1	264.1	40
45	340	343.2	344.3	342.6	290.2	280.8	269.3	260	45
50	309.8	313.1	314.3	315.3	274.4	267.8	259.2	251.9	50
55	283.8	287.3	288.3	289.8	258.5	253.9	247.3	241.4	55
60	261.1	264.7	266	267.5	242.6	239.9	235.5	230.8	60
65	241.1	245	246.3	247.8	228.1	226.4	223.6	220.2	65
70	222.3	227	228.8	230	215	213.7	211.8	209.3	70
75	203.3	208.7	210.7	212.3	202.1	201.3	200	198.1	75
80	185.5	192.3	194.2	195.8	189.2	188.9	188.1	186.8	80
85	108.3	177.7	179.9	181.5	176.3	176.5	176.3	175.6	85
90		164.8	167	168.8	164	164.4	164.6	164.3	90
95		153.2	155.5	157.2	155.7	155.1	154.3	153.3	95
100		126.1	145.2	147	147.2	147.2	146.8	145.8	100
105			135.8	137.6	137.9	138.5	138.7	138.5	105
110			127.4	129.1	129.4	130	130.3	130.4	110
115			115.4	121.4	121.6	122.3	122.5	122.7	115
120			77.4	114.2	114.5	115.2	115.4	115.6	120
125				107.7	108	108.6	108.9	109	125
130				101.7	102	102.6	102.9	103	130
135				81.6	96.3	97	97.3	97.4	135
140					91.2	91.8	92.1	92.2	140
145					86.3	87	87.3	87.4	145
150					75.5	82.4	82.7	82.8	150
155					52.3	66.3	74.5	78.5	155
160						30.7	55.7	65.8	160
165								42.3	165

t_198_002_01001_00_000

Lifting heights Hauteurs de levage

TY



Lifting capacities Forces de levage

TYNZF 20 ft

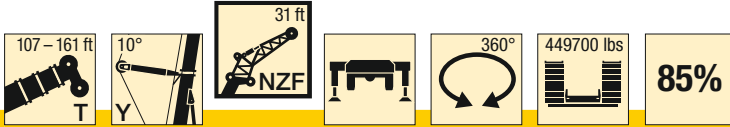


ft	107 ft + 25 ft*				125 ft + 25 ft*				143 ft + 25 ft*				161 ft + 25 ft*				ft
	20 ft				20 ft				20 ft				20 ft				
	0°	10°	20°	38°	0°	10°	20°	38°	0°	10°	20°	38°	0°	10°	20°	38°	
16	237.9																16
17	236.4																17
18	234.9																18
19	233.5				230.8												19
20	232	204.7			229.7												20
22	229	201.4			227.5				214.3								22
24	226.2	198	159		225.3	200.9			214.6				189.4				24
26	223.6	194	156.4		223	198.1	159.1		214.9	199.2			190.5				26
28	220.9	189.7	153.8	120.2	220.9	195.3	156.8		215.2	196.8	159.2		191.6	193.7			28
30	218.3	185.4	151.2	118.3	219	191.7	154.5	119.8	215.4	194.4	157.2		192.7	192.5	159.3		30
32	215.6	181.1	148.5	116.5	217.1	187.9	152.2	118.3	214.4	192	155.1		193.7	191.3	157.5		32
34	212.9	176.7	145.9	114.8	215.2	184.1	149.9	116.8	212.8	189.7	153.1	118.1	194.3	190	155.6		34
36	209.7	172.4	143.3	113.1	213.3	180.3	147.6	115.3	211.2	186.5	151	116.7	194.5	188.6	153.7	117.7	36
38	206.3	168.1	141.3	111.6	211.3	176.5	145.3	113.8	209.6	183.1	148.9	115.4	194.6	186.7	151.9	116.5	38
40	203	163.9	139.3	110	208.9	172.7	143.1	112.4	208	179.7	146.9	114.1	194.8	184.8	150	115.2	40
45	194.5	157.1	134.3	106.5	201.9	163.6	138.6	109.1	203.7	171.2	142.1	111	195.1	177.7	145.4	112.3	45
50	183.5	150.2	129.2	103.3	194.8	157.5	134.2	106.2	198.2	163.3	138.1	108.1	194.2	170	141.3	109.6	50
55	172.1	143.4	124.8	100.5	186.4	151.5	129.8	103.4	192.5	157.9	134.2	105.5	191.3	163	137.7	107.1	55
60	162.2	138	121.7	97.8	176.4	145.5	125.5	100.9	186.9	152.5	130.2	103.1	188.3	158.1	134.2	104.9	60
65	154.6	132.6	117.5	95.6	166.9	140.3	122.8	98.6	179.6	147.1	126.3	100.7	185.2	153.3	130.6	102.7	65
70	147.3	127.3	112.8	93.5	159.2	135.6	119.7	96.5	170.8	142.1	123.7	98.8	180.7	148.4	127.1	100.6	70
75	140.6	123.3	108.3	91.7	152.7	130.8	115.6	94.6	163.1	137.8	120.5	96.8	174.2	143.6	124.4	98.8	75
80	134.6	119.1	104.8	90.1	146.2	126.1	111.4	92.8	156.9	133.6	117	95.1	166.8	139.7	121.6	97	80
85	128.7	114.1	101.2	88.6	140.4	123	107.7	91.3	151.1	129.4	113.4	93.5	160.3	135.9	117.8	95.4	85
90	123.8	109.4	98	87.5	135.2	119	104.6	89.9	145.3	125.4	109.8	92	155.1	132.1	114.7	94	90
95	119.4	104.7	95.4		129.9	114.5	101.6	88.6	140.3	122.6	106.7	90.7	149.8	128.3	111.5	92.6	95
100	113	100.7	92.8		125	110.4	98.6	87.6	135.6	118.4	103.9	89.5	141.7	124.8	108.4	91.3	100
105	107	97.3	90.5		121.4	106.3	96.2	86.8	130.9	114.3	101.3	88.4	133.3	121.8	105.8	90.3	105
110	102.4	93.9	88.6		116.4	102.4	94		126.2	110.7	98.6	87.6	125.5	117.5	103.4	89.2	110
115	97.8	91.1	87		110.9	99.3	91.7		119.3	107.2	96.4	86.8	118.1	113.8	101	88.3	115
120	93.5	88.5			105.6	96.4	89.9		112.2	103.6	94.4		111.1	110.5	98.7	87.5	120
125	89.8				101.4	93.5	88.3		105.6	100.2	92.5		104.5	105.3	96.6	86.8	125
130					97.1	91	87		99.5	97.5	90.7		98.5	99.2	94.8		130
135					93.2	88.9			93.9	94.2	89.3		92.8	93.6	93.1		135
140					87.9	86.6			88.7	89.2	87.7		87.6	88.3	88.8		140
145					70				83.7	84.2	84.6		82.7	83.4	83.9		145
150									79.1	79.6			78.2	78.8	79.2		150
155									74.8	75.2			74	74.5	74.8		155
160									64.5				70	70.4	70.8		160
165													66.2	66.6			165
170													62.7	63			170
175													56.6				175
180													43.5				180

t_198_011_02001_00_000

Lifting capacities Forces de levage

TYNZF 31 ft

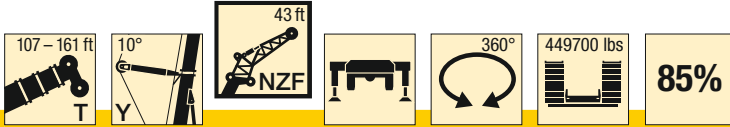


ft	107 ft + 25 ft*				125 ft + 25 ft*				143 ft + 25 ft*				161 ft + 25 ft*				ft
	31 ft				31 ft				31 ft				31 ft				
	0°	10°	20°	38°	0°	10°	20°	38°	0°	10°	20°	38°	0°	10°	20°	38°	
18	230.6																18
19	229.3																19
20	228.1																20
22	225.5				221.8												22
24	222.9	193.3			220.2				197.6								24
26	220.4	189.3			218.6				198.7				173.2				26
28	218	185.3	143.7		217	187.3			199.7				174.4				28
30	215.6	181.2	140.9		215.2	183.9			200.8	182.4			175.6				30
32	213.2	176.6	137.4		213.3	180.5	140.2		201.8	179.5			176.8	176.1			32
34	210.9	172	134.2		211.3	177.1	137.3		201.8	176.7	138.5		178	173.8			34
36	208.5	167.4	131.3	95	209.3	173.1	134.5		200.9	173.9	136.1		178.8	171.5	135.9		36
38	205.4	162.8	128.4	93.6	207.3	169.2	131.8		199.9	170.8	133.6		179	169.2	133.9		38
40	201.4	158.2	125.6	92.3	205.3	165.2	129.4	93.3	198.9	167.3	131.1		179.1	166.8	131.7		40
45	190.1	148.5	119.2	89.4	197.9	155.5	123.2	90.5	196.5	158.7	125.6	91.3	179.4	159.5	126.6	92	45
50	178.8	138.9	113.4	86.6	187.7	147	117.7	88	191	150.4	120.2	89	179.7	152.2	121.8	90.1	50
55	167.8	130.6	108.2	84.1	177.4	138.6	112.6	85.7	182.1	143.3	115.6	86.8	176.1	145.4	117.2	88	55
60	157	123.9	103.7	81.7	167.6	130.7	107.9	83.6	173.2	136.4	111.1	84.8	170.5	139.6	113.2	86.1	60
65	146.3	117.2	99.2	79.6	158.4	124.9	104	81.5	164.5	129.6	106.9	83	164.9	133.8	109.2	84.3	65
70	135.5	110.5	95.2	77.7	149.3	119	100.1	79.7	156.6	124.3	103.4	81.2	159.3	128.1	105.4	82.7	70
75	126.3	105.6	91.8	76	140.2	113.1	96.4	78.1	149.2	119.2	100	79.6	153.3	123.3	102.4	81	75
80	119.8	101	88.4	74.5	131.4	107.8	93.1	76.5	141.8	114.2	96.6	78.1	147.3	118.9	99.4	79.5	80
85	113.2	96.4	85.3	73.1	123.9	103.6	90.2	75.1	134.5	109.1	93.4	76.7	141.2	114.5	96.4	78.2	85
90	106.7	92.2	82.7	72	118.2	99.6	87.2	73.8	127.3	104.9	90.9	75.5	135.1	110	93.6	76.9	90
95	100.9	88.8	80.2	70.8	112.5	95.6	84.6	72.6	121.3	101.3	88.4	74.3	129	105.8	91.1	75.7	95
100	96.5	85.4	77.9	70	106.9	91.9	82.4	71.6	116.4	97.8	85.9	73.1	123.1	102.4	88.9	74.6	100
105	92.1	82.1	75.9		101.6	88.9	80.2	70.6	111.5	94.3	83.7	72.2	118.4	99.3	86.7	73.6	105
110	87.8	79.4	74.1		97.4	86	78	70	106.6	91.1	81.7	71.3	114.1	96.3	84.4	72.6	110
115	83.9	77	72.3		93.6	83.1	76.3	69.3	101.8	88.3	79.8	70.5	109.8	93.2	82.6	71.8	115
120	80.7	74.6	71.1		89.8	80.4	74.7		97.7	85.8	77.9	69.8	105.6	90.4	80.9	70.9	120
125	77.5	72.5	69.9		86	78.2	73.1		94.4	83.3	76.2	69.2	101.3	87.9	79.2	70.1	125
130	74.5	70.8			82.8	76.1	71.8		91.1	80.8	74.8		97.5	85.8	77.5	69.6	130
135	71.9	69.3			80	74	70.6		87.8	78.6	73.4		94.4	83.6	75.9	69.1	135
140	67.6				77.3	72.3	69.6		84.4	76.8	72		89.2	81.4	74.7		140
145					74.6	70.8			81.7	75	71		84.3	79.3	73.5		145
150					72.4	69.4			78.9	73.3	70.1		79.8	77.6	72.2		150
155					67.2				76.4	71.8	69.2		75.6	75.8	71.1		155
160									72.6	70.5			71.6	72.4	70.3		160
165									68.8	69.2			67.9	68.6	68.8		165
170									60.9				64.3	65	65.5		170
175									45.5				61	61.6			175
180													57.8	58.3			180
185													53.1	54.7			185
190													42.3				190

t_198_011_02101_00_000

Lifting capacities Forces de levage

TYNZF 43 ft

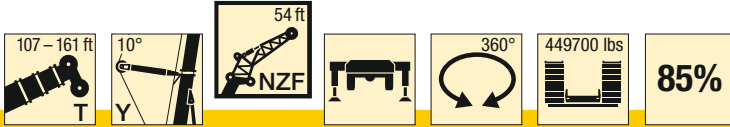


ft	107 ft + 25 ft*				125 ft + 25 ft*				143 ft + 25 ft*				161 ft + 25 ft*				ft
	43 ft				43 ft				43 ft				43 ft				
	0°	10°	20°	38°	0°	10°	20°	38°	0°	10°	20°	38°	0°	10°	20°	38°	
20	209.7																20
22	204																22
24	198.3				201.8												24
26	192.7				196.8				181.6								26
28	187.1	147.7			191.9				180.2				159.5				28
30	182.4	144.5			187	146.7			178.7				160.7				30
32	177.9	141.2			182.2	144.2			177.3				161.9				32
34	173.3	138.1	115.5		178.3	141.4			175.9	142.2			163.1				34
36	168.7	135.4	113.5		174.6	138.6			174	139.8			164.3	139.1			36
38	164.1	132.8	111.6		170.8	135.9	112.5		170.8	137.4			165	137			38
40	159.6	130.2	109.7		167	133.7	110.9		167.6	135	111		163.4	135			40
45	150.7	123.9	105.3	75.8	157.7	127.9	106.9		159.6	129.8	107.4		157.6	130	106.9		45
50	142.3	118.7	101.2	73.7	149.8	122.4	103.1	74	151.9	124.7	104	74.2	151.8	125.5	103.8		50
55	134	113.5	97.6	71.8	142.4	117.7	99.6	72.3	145.3	119.9	100.7	72.7	146.2	121	100.8	72.6	55
60	127.4	108.7	94	70.1	134.9	113.1	96.4	70.7	139.2	115.8	97.6	71.2	140.9	116.9	97.9	71.3	60
65	121.7	104.9	91.1	68.5	128.6	108.6	93.3	69.3	133.1	111.7	94.8	69.8	135.8	113.4	95.3	70	65
70	116.1	101	88.3	67	123.3	105.2	90.7	67.9	127.5	107.7	92	68.4	130.7	109.8	92.9	68.8	70
75	110.4	97.2	85.5	65.8	118.3	101.8	88.2	66.6	122.6	104.5	89.7	67.3	125.8	106.3	90.4	67.6	75
80	105.2	93.9	83.1	64.6	113.4	98.4	85.7	65.5	118.3	101.6	87.5	66.2	121.5	103.4	88.4	66.6	80
85	101.4	91.1	80.9	63.5	108.5	95.1	83.4	64.5	114	98.6	85.3	65.2	117.7	100.7	86.5	65.6	85
90	97.7	88.3	78.8	62.6	103.9	92.4	81.4	63.6	109.7	95.7	83.2	64.2	114	98.1	84.6	64.7	90
95	94.1	85.6	76.9	61.7	100.6	90	79.5	62.7	105.4	93	81.3	63.3	110.2	95.4	82.7	63.9	95
100	90.5	83.3	75.2	61.1	97.3	87.5	77.6	61.9	101.7	90.6	79.7	62.5	106.5	92.7	80.9	63.1	100
105	87.6	81.3	73.6	60.5	94	85.1	76	61.2	98.8	88.4	78	61.9	102.8	90.5	79.4	62.4	105
110	85	79.3	72.1	60.1	90.7	83	74.6	60.7	96	86.2	76.4	61.2	99.8	88.4	77.9	61.8	110
115	82.4	77.3	71	59.9	87.8	81.1	73.2	60.2	93.1	84	75	60.7	97.3	86.5	76.5	61.1	115
120	79.9	75.7	69.9		85.6	79.3	71.9	59.8	90.2	82	73.8	60.3	94.7	84.5	75.1	60.5	120
125	77.8	74.2	68.9		83.4	77.5	70.8	59.6	87.5	80.4	72.6	59.8	92.2	82.6	73.9	60.1	125
130	76	72.7	68.3		81.2	75.8	69.9		85.5	78.8	71.4	59.5	89.7	80.8	72.8	59.8	130
135	74.3	71.3	67.8		78.9	74.5	68.9		83.5	77.2	70.3	59.3	87.2	79.4	71.8	59.4	135
140	72.5	69.8			77.2	73.2	68.2		81.6	75.6	69.5		85.2	78	70.7	59.1	140
145	70.4	68.4			75.7	71.9	67.7		79.7	74.3	68.7		83.4	76.6	69.8	58.9	145
150	66.4				74.2	70.7	67.2		77.8	73.2	67.9		80.7	75.2	69.1	58.8	150
155					72.6	69.5			76.2	72.1	67.4		76.7	73.9	68.4		155
160					70.7	68.3			74	71.1	67		72.8	72.8	67.7		160
165					64				70.4	69.9	66.7		69	70.1	67		165
170									66.8	67.6			65.5	66.5	66.5		170
175									63.5	64.2			62.2	63.1	63.9		175
180									57.4	60.4			59.1	59.9	60.5		180
185									44.8				56.1	56.8			185
190													53.2	53.9			190
195													49.6	51			195
200													40.4				200

t_198_011_02201_00_000

Lifting capacities Forces de levage

TYNZF 54 ft

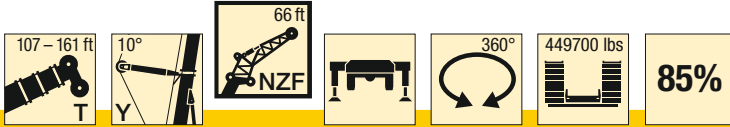


ft	107 ft + 25 ft*				125 ft + 25 ft*				143 ft + 25 ft*				161 ft + 25 ft*				ft
	54 ft				54 ft				54 ft				54 ft				
	0°	10°	20°	38°	0°	10°	20°	38°	0°	10°	20°	38°	0°	10°	20°	38°	
22	170.2																22
24	165.4				166.4												24
26	160.6				162.8												26
28	155.7				158.7				157.3								28
30	151	112.1			154.7				153.7				144.1				30
32	146.5	109.3			150.6				150.2				142.2				32
34	142	106.3			146.6	107.5			146.6				140.3				34
36	137.5	103.3			142.6	105			143	104.9			138.5				36
38	133	100.5			138.6	102.5			139.5	102.7			136.6	101.7			38
40	128.6	98.1	77.7		134.6	100			136	100.5			134.7	99.8			40
45	118.6	92.1	73.4		124.6	94.5	74.9		127.4	95.1	75.9		127.7	95.1			45
50	110.8	86.4	69.8		115.6	89.5	71.3		118.8	90.7	72.6		120.4	90.7	73		50
55	103	81.5	66.2	50	108.8	84.6	68.1	50.4	111	86.3	69.6		113.1	86.9	70.3		55
60	95.5	76.6	63.2	48.4	102	80.5	65.1	48.9	105.2	82.2	66.7	49.3	106.9	83	67.7	49.6	60
65	89.8	72.2	60.2	47	95.3	76.4	62.5	47.6	99.5	78.7	64.1	48.1	101.9	79.6	65.2	48.4	65
70	84.7	68.8	57.8	45.5	90	72.4	60	46.3	93.7	75.3	61.8	46.9	97	76.7	62.9	47.3	70
75	79.6	65.4	55.5	44.3	85.4	69.3	57.7	45.1	88.8	71.9	59.5	45.8	92	73.8	60.8	46.2	75
80	74.4	62.1	53.3	43.2	81	66.3	55.7	44.1	84.6	69	57.4	44.8	87.6	70.9	58.8	45.2	80
85	69.7	58.9	51.2	42.1	76.7	63.3	53.7	43.1	80.9	66.4	55.6	43.8	83.8	68.3	56.9	44.3	85
90	66.2	56.5	49.5	41.1	72.4	60.4	51.8	42.1	77.3	63.7	53.9	42.9	80.7	66	55.3	43.5	90
95	63	54.2	47.8	40.2	68.2	57.8	50.1	41.3	73.6	61.1	52.1	42.1	77.5	63.6	53.7	42.6	95
100	59.8	51.9	46.1	39.4	65.4	55.7	48.6	40.5	69.9	58.5	50.5	41.3	74.4	61.3	52.1	41.9	100
105	56.5	49.8	44.7	38.7	62.6	53.7	47.1	39.7	66.6	56.4	49.1	40.5	71.2	59	50.6	41.2	105
110	53.7	48	43.5	38.1	59.7	51.6	45.7	39	64.1	54.6	47.7	39.8	68.2	56.9	49.3	40.5	110
115	51.6	46.3	42.2	37.5	56.9	49.7	44.5	38.4	61.6	52.8	46.4	39.2	65.5	55.2	48.1	39.9	115
120	49.5	44.7	41.1	37	54.2	48	43.3	37.8	59.1	51	45.1	38.6	63.2	53.6	46.9	39.3	120
125	47.3	43.1	40	36.5	52.1	46.6	42.2	37.3	56.6	49.2	44.1	38.1	61	51.9	45.6	38.8	125
130	45.2	41.8	39.1		50.2	45.1	41.1	36.9	54.1	47.7	43.1	37.6	58.8	50.3	44.6	38.2	130
135	43.6	40.6	38.2		48.3	43.6	40.2	36.5	52.1	46.4	42.1	37.2	56.5	48.8	43.6	37.8	135
140	42	39.4	37.5		46.4	42.3	39.4		50.4	45.1	41.1	36.8	54.4	47.4	42.7	37.4	140
145	40.5	38.3	36.8		44.6	41.3	38.6		48.7	43.8	40.2	36.5	52.4	46.3	41.9	36.9	145
150	39	37.5	36.3		43.1	40.2	37.8		47.1	42.6	39.5	36.2	50.8	45.1	41	36.6	150
155	37.8	36.6			41.8	39.1	37.2		45.4	41.5	38.8		49.3	43.9	40.2	36.3	155
160	36.7				40.4	38.2	36.7		43.8	40.6	38.1		47.8	42.8	39.5	36.1	160
165					39.1	37.4	36.2		42.6	39.7	37.5		46.3	41.7	38.9		165
170					38	36.6			41.4	38.8	36.9		44.8	40.8	38.2		170
175					37	36			40.2	37.9	36.4		43.5	40	37.6		175
180					36.1				39	37.2	36.1		42.4	39.2	37.1		180
185									38	36.6			41.3	38.4	36.7		185
190									37.1	36			40.2	37.6	36.3		190
195									36.3				39.1	37.1	35.9		195
200													38.1	36.5			200
205													37.3	36			205
210													36.5				210
215													28.2				215

t_198_011_02301_00_000

Lifting capacities Forces de levage

TYNZF 66 ft

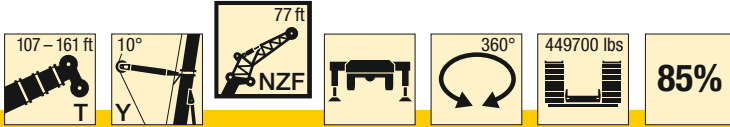


ft	107 ft + 25 ft*				125 ft + 25 ft*				143 ft + 25 ft*				161 ft + 25 ft*				ft
	66 ft				66 ft				66 ft				66 ft				
	0°	10°	20°	38°	0°	10°	20°	38°	0°	10°	20°	38°	0°	10°	20°	38°	
22	144.9																22
24	141.2																24
26	137.2				138.3												26
28	133.2				134.9												28
30	129.2				131.6				130.5				126.9				30
32	125.4				128.3				127.7				124.9				32
34	122.4	97.4			124.9				124.8				122.4				34
36	119.4	95.5			121.6				122				119.9				36
38	116.5	93.6			118.9	94.1			119.1				117.5				38
40	113.5	91.6			116.4	92.4			116.4	92.5			115				40
45	106.2	86.9	72.2		109.9	88.3			110.8	89.1			109.5	88.6			45
50	100.3	82.4	69.1		103.6	84.4	70.1		105.3	85.7			104.8	85.3			50
55	95.1	78.1	66.4		98.3	80.6	67.4		99.8	82.5	68.1		100.1	82.3	68.3		55
60	89.8	74.6	63.7		93.9	77	65.1		95.2	79.3	65.8		95.5	79.5	66.1		60
65	85	71.2	61.4	46.6	89.5	73.9	62.8	46.8	91.4	76.2	63.7		91.7	76.7	64.1		65
70	80.9	67.9	59.3	45.3	85.1	70.9	60.8	45.6	87.5	73.5	61.7	45.8	88.3	74.1	62.3	45.8	70
75	77.2	65.3	57.1	44.1	81.3	67.9	58.9	44.5	83.6	70.8	59.9	44.8	85	71.8	60.5	44.8	75
80	73.5	62.9	55.2	43	78	65.5	56.9	43.5	80.3	68.1	58.2	43.8	81.6	69.5	58.9	44	80
85	69.8	60.5	53.2	42.1	74.7	63.3	55.2	42.5	77.2	65.7	56.4	43	78.6	67.2	57.4	43.1	85
90	66.3	58.1	51.3	41.1	71.5	61.1	53.4	41.7	74.4	63.7	54.8	42.1	75.9	65	55.8	42.4	90
95	63.5	56	49.5	40.3	68.2	58.9	51.7	40.9	71.6	61.8	53.3	41.4	73.5	63.3	54.4	41.6	95
100	61.1	54	48	39.5	65	56.8	50	40.1	68.9	59.8	51.7	40.6	71.1	61.5	53	41	100
105	58.7	52	46.5	38.8	62.7	54.9	48.6	39.4	66.1	57.9	50.2	39.9	68.8	59.8	51.6	40.3	105
110	56.3	50	45	38.1	60.6	53.2	47.2	38.8	63.4	56.1	48.8	39.3	66.4	58	50.2	39.6	110
115	54	48.3	43.8	37.5	58.5	51.5	45.9	38.2	61.5	54.4	47.6	38.7	64.1	56.3	48.9	39.1	115
120	51.9	46.7	42.7	37.1	56.4	49.7	44.6	37.6	59.6	52.8	46.4	38.2	61.9	54.7	47.8	38.5	120
125	50	45.3	41.5	36.6	54.2	48.1	43.5	37.2	57.7	51.2	45.2	37.7	60.2	53.3	46.7	38	125
130	48.1	43.8	40.5	36.3	52.3	46.7	42.5	36.7	55.9	49.6	44.1	37.2	58.5	51.9	45.6	37.6	130
135	46.2	42.4	39.6	36	50.6	45.4	41.5	36.4	54	48.1	43.2	36.8	56.9	50.4	44.5	37.2	135
140	44.4	41.2	38.7		48.8	44.1	40.6	36	52.1	46.9	42.3	36.5	55.2	49	43.6	36.7	140
145	42.9	40.1	37.9		47.1	42.8	39.7	35.8	50.6	45.6	41.4	36.1	53.5	47.7	42.7	36.4	145
150	41.6	39	37.2		45.4	41.6	39	35.6	49.1	44.4	40.5	35.8	51.9	46.5	41.9	36.1	150
155	40.2	38	36.6		43.8	40.6	38.2		47.6	43.2	39.7	35.6	50.4	45.4	41.1	35.8	155
160	38.9	37.3	36.1		42.5	39.7	37.5		46.1	42.1	39	35.5	49.1	44.4	40.3	35.6	160
165	37.8	36.5			41.3	38.7	37		44.6	41.1	38.4		47.7	43.3	39.6	35.4	165
170	36.7				40.1	37.8	36.5		43.2	40.3	37.7		46.4	42.2	39	35.3	170
175					38.9	37.2	36		42.1	39.4	37.1		45	41.3	38.4		175
180					37.9	36.5			41	38.5	36.7		43.6	40.5	37.8		180
185					37	35.9			39.9	37.7	36.2		42.5	39.7	37.2		185
190					36.1				38.8	37.1	35.9		41.5	38.9	36.8		190
195									37.8	36.5			40.6	38.2	36.4		195
200									37	36			39.6	37.5	36		200
205									36.3				38.7	37	35.7		205
210													37.7	36.4			210
215													37	35.9			215
220													35.7				220
225													27.7				225

t_198_011_02401_00_000

Lifting capacities Forces de levage

TYNZF 77 ft

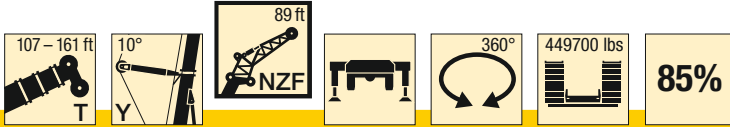


ft	107 ft + 25 ft*				125 ft + 25 ft*				143 ft + 25 ft*				161 ft + 25 ft*				ft
	77 ft				77 ft				77 ft				77 ft				
	0°	10°	20°	38°	0°	10°	20°	38°	0°	10°	20°	38°	0°	10°	20°	38°	
24	121.5																24
26	118.2																26
28	114.9				116.3												28
30	111.6				113.6				112.6								30
32	108.3				110.9				110.4				107.9				32
34	105.2				108.2				108				105.8				34
36	102.7				105.5				105.6				103.7				36
38	100.3	81.3			102.8				103.2				101.6				38
40	97.9	79.8			100.6				100.8				99.6				40
45	91.9	75.8			95.3	76.5			95.6	76.4			94.5				45
50	86.3	72.2	60.6		90.1	73.1			91	73.3			90.4	72.8			50
55	82	68.7	58.1		85.1	70.1	58.8		86.5	70.4			86.5	70			55
60	77.9	65.3	55.7		81.1	67.2	56.6		82.1	67.9	57.2		82.6	67.6	57.4		60
65	73.8	62.5	53.5		77.5	64.4	54.6		78.7	65.4	55.2		78.8	65.4	55.5		65
70	70.1	59.6	51.5	39.1	73.8	61.8	52.6		75.5	62.9	53.5		75.9	63.1	53.8		70
75	66.8	56.9	49.8	38	70.3	59.3	50.9	38.1	72.3	60.7	51.8	38.1	73.2	61	52.2		75
80	63.9	54.7	48	37	67.2	56.8	49.3	37.1	69.2	58.6	50.2	37.3	70.4	59.2	50.7	37.3	80
85	60.9	52.7	46.5	36	64.6	54.7	47.7	36.3	66.5	56.4	48.8	36.5	67.6	57.3	49.3	36.6	85
90	57.9	50.7	45.1	35.1	62	52.9	46.3	35.4	64	54.4	47.3	35.7	65.2	55.5	48	35.8	90
95	55	48.7	43.6	34.3	59.5	51.1	45.1	34.6	61.8	52.8	46	35	63	53.8	46.7	35.2	95
100	52.6	46.8	42.3	33.5	56.9	49.3	43.8	34	59.6	51.1	44.8	34.3	61.1	52.3	45.5	34.5	100
105	50.7	45.3	41.1	32.8	54.3	47.5	42.5	33.3	57.4	49.5	43.7	33.7	59.1	50.8	44.5	33.9	105
110	48.7	43.9	40	32.2	52.3	45.9	41.4	32.7	55.1	47.9	42.6	33	57.2	49.4	43.5	33.4	110
115	46.8	42.4	38.9	31.6	50.6	44.6	40.4	32.1	52.9	46.4	41.5	32.5	55.3	47.9	42.5	32.8	115
120	44.9	41	37.9	31	48.8	43.3	39.5	31.6	51.2	45	40.5	32	53.4	46.4	41.4	32.3	120
125	43.1	39.8	37.1	30.5	47.1	42	38.5	31.1	49.7	43.9	39.7	31.5	51.6	45.2	40.5	31.8	125
130	41.8	38.8	36.2	30.1	45.3	40.8	37.6	30.6	48.1	42.7	38.8	31	50.2	44	39.7	31.4	130
135	40.5	37.8	35.4	29.7	43.6	39.6	36.9	30.2	46.6	41.6	37.9	30.6	48.8	43	38.9	31	135
140	39.2	36.7	34.7	29.4	42.3	38.7	36.1	29.8	45.1	40.4	37.2	30.2	47.4	42	38.2	30.6	140
145	37.9	35.8	34	29.2	41.2	37.8	35.4	29.5	43.5	39.3	36.5	29.9	46	41	37.4	30.2	145
150	36.7	35	33.4		40	36.9	34.7	29.2	42.2	38.5	35.9	29.6	44.6	40	36.7	29.9	150
155	35.7	34.2	32.8		38.8	36	34.1	29	41.2	37.7	35.2	29.3	43.2	39	36.1	29.6	155
160	34.8	33.5	32.4		37.6	35.2	33.6	28.8	40.1	36.9	34.6	29	41.9	38.3	35.6	29.3	160
165	33.9	32.8	32		36.5	34.5	33.1		39	36.1	34	28.8	41	37.5	35	29.1	165
170	33	32.3	31.7		35.7	33.9	32.6		38	35.3	33.6	28.7	40	36.8	34.4	28.8	170
175	32.4	31.9			34.8	33.2	32.3		36.9	34.6	33.1		39.1	36	33.9	28.7	175
180	31.8	31.6			34	32.6	32		36	34	32.7		38.1	35.3	33.5	28.5	180
185	31.3				33.1	32.2	31.7		35.2	33.5	32.3		37.2	34.6	33.1		185
190					32.5	31.8			34.5	32.9	32		36.3	34.1	32.7		190
195					31.9	31.5			33.8	32.4	31.8		35.5	33.6	32.3		195
200					31.4				33	32	31.6		34.8	33.1	32		200
205									32.4	31.7			34.2	32.6	31.8		205
210									31.9	31.4			33.5	32.1	31.6		210
215									31.5				32.9	31.8	31.4		215
220									30.1				32.2	31.5			220
225													31.8	31.2			225
230													31.4	31.1			230
235													27.6				235

t_198_011_02501_00_000

Lifting capacities Forces de levage

TYNZF 89 ft

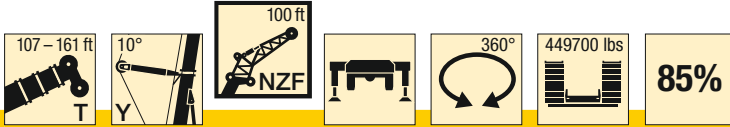


ft	107 ft + 25 ft*				125 ft + 25 ft*				143 ft + 25 ft*				161 ft + 25 ft*				ft
	89 ft				89 ft				89 ft				89 ft				
	0°	10°	20°	38°	0°	10°	20°	38°	0°	10°	20°	38°	0°	10°	20°	38°	
26	104																26
28	101.3				100.8												28
30	98.5				98.9												30
32	95.8				96.7				95.9								32
34	93				94.4				94				92.2				34
36	90.4				92.1				92				90.5				36
38	88.3				89.9				90				88.9				38
40	86.3				87.6				88				87.2				40
45	81.4	66.4			83.1	66.4			83.3				83.1				45
50	76.5	63.1			78.8	63.7			79.3	63.6			79.4	62.9			50
55	72.2	60.3			74.5	60.9			75.5	61.1			76.1	60.7			55
60	68.8	57.5	49		70.6	58.6	49.4		71.7	58.7			72.7	58.4			60
65	65.3	54.9	46.9		67.6	56.2	47.6		68.2	56.6	48		69.4	56.4	48.1		65
70	61.9	52.5	45.1		64.5	53.9	45.9		65.6	54.5	46.3		66.5	54.5	46.6		70
75	58.9	50.2	43.3		61.5	51.8	44.3		62.9	52.5	44.9		64.1	52.6	45.2		75
80	56.3	47.9	41.8	32	58.7	49.8	42.7		60.3	50.7	43.4		61.7	50.9	43.9		80
85	53.8	46	40.3	31.1	56.2	47.8	41.4	31.4	57.8	49	42.1	31.4	59.3	49.4	42.5		85
90	51.4	44.3	38.9	30.3	54.1	45.9	40.1	30.7	55.5	47.3	40.9	30.9	57	48	41.3	31.1	90
95	49	42.6	37.7	29.5	51.9	44.4	38.8	30	53.5	45.7	39.6	30.2	55	46.5	40.2	30.4	95
100	46.6	40.9	36.5	28.8	49.8	42.9	37.7	29.3	51.7	44.2	38.5	29.5	53.2	45.1	39.1	29.8	100
105	44.5	39.3	35.4	28.1	47.7	41.4	36.6	28.6	49.9	42.9	37.4	28.9	51.6	43.8	38	29.2	105
110	42.9	37.9	34.2	27.4	45.6	39.9	35.6	28	48.1	41.5	36.5	28.3	50	42.6	37.1	28.7	110
115	41.3	36.7	33.4	26.8	43.8	38.5	34.5	27.4	46.3	40.2	35.6	27.8	48.4	41.3	36.2	28.1	115
120	39.7	35.5	32.5	26.3	42.4	37.3	33.6	26.9	44.4	38.8	34.6	27.3	46.9	40.1	35.4	27.6	120
125	38.1	34.3	31.6	25.8	40.9	36.2	32.8	26.4	42.9	37.6	33.7	26.8	45.3	38.9	34.5	27.1	125
130	36.5	33.2	30.8	25.3	39.5	35.2	32	25.9	41.6	36.6	33	26.3	43.7	37.7	33.7	26.7	130
135	35.3	32.3	30.1	24.9	38.1	34.1	31.2	25.5	40.3	35.6	32.2	25.9	42.5	36.7	32.9	26.3	135
140	34.2	31.4	29.4	24.5	36.6	33.1	30.5	25.1	39	34.7	31.5	25.5	41.3	35.8	32.3	25.9	140
145	33.1	30.5	28.7	24.2	35.3	32.2	29.8	24.7	37.7	33.7	30.8	25.2	40.1	34.9	31.6	25.5	145
150	32	29.7	28.1	23.9	34.3	31.4	29.2	24.4	36.4	32.8	30.2	24.8	38.9	34.1	31	25.1	150
155	30.9	28.9	27.5	23.7	33.3	30.6	28.6	24.1	35.1	31.9	29.6	24.5	37.7	33.2	30.3	24.8	155
160	29.9	28.2	27.1	23.5	32.4	29.9	28.1	23.9	34.2	31.2	29.1	24.2	36.5	32.4	29.8	24.5	160
165	29.1	27.6	26.6		31.4	29.1	27.6	23.7	33.3	30.6	28.5	24	35.4	31.6	29.3	24.2	165
170	28.4	27	26.2		30.4	28.4	27.1	23.5	32.4	29.9	28	23.7	34.5	31	28.8	24	170
175	27.6	26.4	25.9		29.5	27.9	26.7		31.6	29.2	27.5	23.6	33.6	30.4	28.3	23.8	175
180	26.9	26	25.6		28.8	27.3	26.3		30.7	28.5	27.1	23.4	32.8	29.8	27.8	23.6	180
185	26.3	25.7			28.1	26.8	26		29.8	28	26.7		31.9	29.2	27.4	23.4	185
190	25.7	25.3			27.5	26.3	25.7		29.1	27.5	26.3		31.1	28.5	27	23.3	190
195	25.3				26.8	25.9	25.5		28.4	27	26		30.3	28	26.7	23.2	195
200					26.2	25.6			27.8	26.5	25.7		29.5	27.5	26.3		200
205					25.8	25.2			27.2	26.1	25.5		28.9	27.1	26		205
210					25.3				26.6	25.8	25.3		28.3	26.7	25.7		210
215									26.1	25.5			27.7	26.2	25.5		215
220									25.7	25.2			27.2	25.8	25.4		220
225									25.3	25			26.6	25.6	25.2		225
230									25				26.1	25.3			230
235													25.7	25			235
240													25.4	24.9			240
245													25				245

t_198_011_02601_00_000

Lifting capacities Forces de levage

TYNZF 100 ft

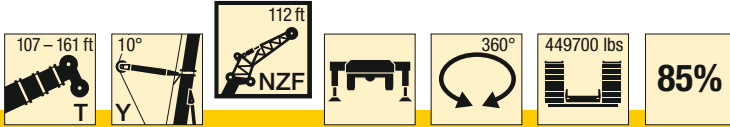


ft	107 ft + 25 ft*				125 ft + 25 ft*				143 ft + 25 ft*				161 ft + 25 ft*				ft
	100 ft				100 ft				100 ft				100 ft				
	0°	10°	20°	38°	0°	10°	20°	38°	0°	10°	20°	38°	0°	10°	20°	38°	
26	92.4																26
28	90.2																28
30	87.9				87.6												30
32	85.6				85.7												32
34	83.3				83.8				83.2								34
36	81				81.9				81.6				80				36
38	78.9				80				79.9				78.6				38
40	77.1				78.1				78.3				77.1				40
45	72.9	59.7			73.9				74				73.4				45
50	68.7	56.9			70.3	57			70.5				69.8				50
55	64.7	54.1			66.6	54.6			67.3	54.6			66.9	54.1			55
60	61.5	51.9			63.1	52.3			64.1	52.4			64	52.1			60
65	58.6	49.6	41.8		60.1	50.3	42.1		60.9	50.5			61.2	50.2			65
70	55.7	47.4	40		57.6	48.3	40.6		58.3	48.7	41		58.4	48.5	40.8		70
75	52.8	45.4	38.5		55	46.3	39.1		56	46.9	39.5		56.2	46.9	39.6		75
80	50.4	43.4	37		52.4	44.6	37.7		53.7	45.2	38.2		54.2	45.3	38.4		80
85	48.2	41.5	35.6		50.1	43	36.4		51.5	43.7	37		52.2	43.8	37.3		85
90	46.2	39.7	34.4	27.3	48	41.3	35.2	27.4	49.4	42.3	35.8		50.2	42.6	36.2		90
95	44.2	38.3	33.1	26.5	46.3	39.8	34.1	26.7	47.4	40.9	34.7	26.8	48.3	41.3	35.1	26.8	95
100	42.2	36.9	32.1	25.8	44.6	38.4	33	26	45.8	39.5	33.7	26.1	46.6	40	34.1	26.2	100
105	40.2	35.4	31.1	25.1	42.8	37.1	32	25.4	44.3	38.2	32.6	25.6	45.1	38.8	33.2	25.7	105
110	38.3	34	30.1	24.5	41.1	35.8	31.1	24.8	42.8	37.1	31.7	25	43.7	37.7	32.3	25.1	110
115	36.9	32.8	29.1	23.9	39.3	34.5	30.2	24.2	41.3	35.9	30.9	24.5	42.4	36.7	31.4	24.6	115
120	35.5	31.7	28.2	23.4	37.8	33.3	29.3	23.7	39.8	34.8	30.1	24	41	35.6	30.7	24.2	120
125	34.2	30.7	27.5	22.9	36.5	32.1	28.4	23.1	38.3	33.6	29.3	23.5	39.7	34.6	29.9	23.7	125
130	32.8	29.7	26.7	22.3	35.3	31.2	27.7	22.7	37	32.5	28.5	23	38.4	33.6	29.2	23.3	130
135	31.5	28.7	25.9	21.9	34	30.3	27	22.3	35.8	31.5	27.8	22.6	37	32.5	28.4	22.9	135
140	30.2	27.7	25.3	21.5	32.7	29.4	26.3	21.9	34.7	30.7	27.1	22.2	35.9	31.6	27.7	22.5	140
145	29.3	27	24.7	21.1	31.4	28.5	25.7	21.5	33.6	29.8	26.5	21.8	34.9	30.8	27.1	22.1	145
150	28.4	26.2	24.1	20.7	30.3	27.6	25	21.1	32.5	29	25.9	21.5	33.9	30.1	26.6	21.8	150
155	27.4	25.5	23.5	20.4	29.4	26.9	24.5	20.8	31.4	28.2	25.3	21.2	32.9	29.3	26	21.4	155
160	26.5	24.7	23	20.1	28.5	26.2	24	20.5	30.3	27.4	24.8	20.9	32	28.6	25.5	21.1	160
165	25.5	24	22.6	19.9	27.6	25.6	23.5	20.3	29.3	26.7	24.3	20.6	31	27.8	24.9	20.9	165
170	24.7	23.5	22.1	19.8	26.8	24.9	23	20	28.5	26.1	23.8	20.3	30	27.1	24.4	20.6	170
175	24.1	22.9	21.7		25.9	24.2	22.6	19.8	27.8	25.5	23.4	20.1	29.1	26.5	24	20.3	175
180	23.4	22.4	21.4		25.1	23.7	22.2	19.7	27	24.9	22.9	19.9	28.4	25.9	23.6	20.1	180
185	22.7	21.8	21.1		24.4	23.2	21.8		26.3	24.3	22.5	19.7	27.7	25.4	23.2	19.9	185
190	22.1	21.4	20.8		23.8	22.7	21.4		25.5	23.7	22.2	19.6	27	24.9	22.8	19.7	190
195	21.6	21.1			23.2	22.3	21.1		24.8	23.3	21.8	19.4	26.3	24.3	22.4	19.6	195
200	21.1	20.7			22.6	21.8	20.9		24.2	22.8	21.5		25.6	23.8	22.1	19.5	200
205	20.6				22	21.4	20.7		23.6	22.4	21.2		25	23.3	21.8	19.4	205
210					21.5	21.1	20.6		23.1	22	21		24.3	22.9	21.5		210
215					21.2	20.8			22.6	21.6	20.8		23.8	22.5	21.2		215
220					20.8				22	21.3	20.6		23.3	22.1	20.9		220
225					20.5				21.5	21	20.5		22.8	21.8	20.8		225
230									21.2	20.7			22.4	21.4	20.6		230
235									20.8	20.6			21.9	21.1	20.4		235
240									20.5				21.4	20.9	20.4		240
245													21.1	20.7			245
250													20.8	20.5			250
255													20.5				255
260													17.8				260

t_198.011_02701_00_000

Lifting capacities Forces de levage

TYNZF 112 ft



ft	107 ft + 25 ft*				125 ft + 25 ft*				143 ft + 25 ft*				161 ft + 25 ft*				ft
	112 ft				112 ft				112 ft				112 ft				
	0°	10°	20°	38°	0°	10°	20°	38°	0°	10°	20°	38°	0°	10°	20°	38°	
28	80.1																28
30	78.2																30
32	76.3				75.8												32
34	74.3				74.2												34
36	72.4				72.6				72.1								36
38	70.4				71				70.7				69.4				38
40	68.6				69.3				69.3				68.2				40
45	64.9				65.4				65.7				65				45
50	61.3	50.7			62.3				62.4				61.8				50
55	57.8	48.3			59.2	48.4			59.6	48.2			59.1				55
60	54.6	46.1			56.2	46.4			56.9	46.4			56.7	46			60
65	52.1	44.2			53.2	44.5			54.2	44.6			54.2	44.4			65
70	49.6	42.3	35.9		51	42.8			51.6	43			51.8	42.8			70
75	47.2	40.4	34.4		48.9	41.1	34.8		49.5	41.5	34.9		49.5	41.4			75
80	44.9	38.8	33.1		46.7	39.5	33.5		47.6	39.9	33.8		47.7	40	33.7		80
85	42.8	37.2	31.8		44.6	38.1	32.3		45.7	38.5	32.7		46	38.6	32.8		85
90	41.1	35.6	30.6		42.7	36.8	31.1		43.8	37.3	31.6		44.3	37.3	31.8		90
95	39.4	34.1	29.5	23.3	41	35.4	30.1		42	36.1	30.6		42.6	36.2	30.9		95
100	37.8	32.9	28.4	22.7	39.5	34.1	29.1	22.7	40.3	34.9	29.6		41	35.2	29.9		100
105	36.1	31.7	27.4	22	38.1	32.9	28.1	22.1	39	33.7	28.7	22.2	39.5	34.1	29.1	22.2	105
110	34.5	30.5	26.5	21.4	36.6	31.8	27.2	21.5	37.7	32.6	27.8	21.7	38.3	33	28.3	21.8	110
115	32.9	29.2	25.7	20.8	35.2	30.7	26.4	21	36.5	31.6	27	21.2	37.1	32	27.5	21.3	115
120	31.6	28.1	24.8	20.3	33.7	29.6	25.7	20.5	35.2	30.7	26.2	20.7	36	31.2	26.7	20.8	120
125	30.5	27.1	24	19.8	32.4	28.5	24.9	20	33.9	29.7	25.6	20.2	34.9	30.3	26	20.4	125
130	29.3	26.2	23.3	19.3	31.2	27.5	24.1	19.6	32.6	28.7	24.9	19.8	33.7	29.4	25.4	20	130
135	28.2	25.4	22.7	18.9	30.2	26.6	23.4	19.1	31.5	27.8	24.2	19.4	32.6	28.6	24.7	19.6	135
140	27	24.5	22	18.4	29.1	25.8	22.8	18.7	30.5	26.9	23.5	19	31.5	27.7	24.1	19.2	140
145	25.9	23.6	21.4	18	28	25.1	22.2	18.4	29.5	26.1	22.9	18.6	30.5	26.9	23.5	18.8	145
150	24.9	22.9	20.8	17.7	27	24.3	21.7	18	28.6	25.4	22.4	18.3	29.6	26.1	22.9	18.5	150
155	24.1	22.2	20.3	17.3	25.9	23.5	21.1	17.7	27.7	24.7	21.9	18	28.8	25.5	22.4	18.2	155
160	23.4	21.6	19.8	17	25	22.7	20.5	17.4	26.7	23.9	21.3	17.7	28	24.9	21.9	17.9	160
165	22.6	21	19.3	16.8	24.2	22.2	20.1	17	25.8	23.2	20.8	17.4	27.1	24.2	21.4	17.6	165
170	21.8	20.3	18.8	16.5	23.5	21.6	19.7	16.8	24.9	22.5	20.3	17.1	26.3	23.6	20.9	17.3	170
175	21	19.8	18.4	16.3	22.8	21	19.2	16.6	24.2	22	19.9	16.9	25.5	22.9	20.5	17.1	175
180	20.4	19.3	18.1	16.1	22.1	20.5	18.8	16.3	23.5	21.5	19.5	16.6	24.7	22.3	20	16.8	180
185	19.8	18.8	17.7		21.4	19.9	18.4	16.2	22.9	21	19.1	16.4	24	21.8	19.7	16.6	185
190	19.2	18.4	17.4		20.7	19.4	18.1	16	22.2	20.5	18.7	16.2	23.4	21.4	19.3	16.4	190
195	18.7	17.9	17.1		20.1	19	17.8	15.9	21.6	20	18.4	16.1	22.8	20.9	18.9	16.3	195
200	18.1	17.6	16.9		19.6	18.6	17.5		20.9	19.5	18.1	15.9	22.2	20.4	18.6	16.1	200
205	17.7	17.3	16.8		19.1	18.2	17.2		20.3	19.1	17.8	15.8	21.6	20	18.3	16	205
210	17.3	17			18.6	17.8	17		19.8	18.7	17.5		21	19.5	18	15.9	210
215	16.9				18.1	17.5	16.8		19.3	18.3	17.2		20.4	19.1	17.8	15.7	215
220					17.6	17.2	16.7		18.9	18	17		19.9	18.8	17.5		220
225					17.3	16.9			18.4	17.6	16.9		19.4	18.4	17.3		225
230					16.9	16.7			18	17.3	16.7		19	18.1	17		230
235					16.7				17.5	17.1	16.6		18.6	17.8	16.9		235
240									17.2	16.9			18.2	17.4	16.7		240
245									16.9	16.7			17.8	17.2	16.6		245
250									16.6				17.5	17	16.5		250
255													17.2	16.8			255
260													16.9	16.6			260
265													16.6				265
270													16.4				270

t_198_011_02801_00_000

Lifting capacities Forces de levage

TYNZF 123 ft



ft	107 ft + 25 ft*				125 ft + 25 ft*				143 ft + 25 ft*				161 ft + 25 ft*				ft
	123 ft				123 ft				123 ft				123 ft				
	0°	10°	20°	38°	0°	10°	20°	38°	0°	10°	20°	38°	0°	10°	20°	38°	
30	69.4																30
32	67.8																32
34	66.2				65.7												34
36	64.6				64.4				63.5								36
38	63				63				62.7								38
40	61.4				61.7				61.5				61.4				40
45	57.9				58.3				58.5				58.7				45
50	54.9				55.5				55.6				55.9				50
55	52	43.4			52.9				53				53.4				55
60	49.1	41.4			50.3	41.5			50.7	41.3			51.2				60
65	46.6	39.6			47.8	39.8			48.5	39.8			49.1	39.5			65
70	44.5	37.9			45.5	38.3			46.3	38.3			47	38.1			70
75	42.5	36.3	31.1		43.7	36.8			44.2	36.9			44.9	36.7			75
80	40.5	34.8	29.8		41.8	35.4	30.7		42.5	35.6	30.9		43.1	35.5			80
85	38.5	33.5	28.6		40	34	29.7		40.9	34.4	29.9		41.6	34.3	29.9		85
90	36.8	32.1	27.5		38.2	32.9	28.6		39.4	33.1	29		40.2	33.2	29		90
95	35.4	30.8	26.4		36.6	31.7	27.5		37.7	32	28		38.7	32.1	28.2		95
100	34	29.6	25.5		35.1	30.6	26.5		36.3	31	27.1		37.1	31.1	27.4		100
105	32.6	28.5	24.5	19.6	33.9	29.5	25.6		34.8	30	26.3		35.8	30.2	26.6		105
110	31.2	27.4	23.6	19	32.7	28.4	24.7	19.1	33.7	29	25.4	19.1	34.5	29.3	25.9		110
115	29.9	26.4	22.9	18.4	31.5	27.5	23.9	18.6	32.6	28	24.6	18.6	33.5	28.4	25.2	18.6	115
120	28.5	25.3	22.1	17.9	30.3	26.5	23.2	18.1	31.5	27.2	23.8	18.2	32.5	27.5	24.4	18.2	120
125	27.4	24.3	21.4	17.4	29.1	25.6	22.5	17.6	30.4	26.4	23.1	17.8	31.4	26.8	23.7	17.8	125
130	26.4	23.4	20.7	17	27.9	24.6	21.8	17.1	29.3	25.5	22.5	17.3	30.4	26.1	23.1	17.4	130
135	25.4	22.6	20	16.5	26.9	23.7	21.1	16.7	28.2	24.7	21.9	16.9	29.3	25.3	22.5	17	135
140	24.4	21.9	19.4	16.1	26	22.9	20.4	16.4	27.2	23.9	21.3	16.6	28.3	24.6	21.9	16.7	140
145	23.4	21.1	18.9	15.7	25.1	22.2	19.8	16	26.3	23.1	20.7	16.2	27.3	23.9	21.4	16.3	145
150	22.4	20.4	18.3	15.4	24.2	21.5	19.3	15.6	25.5	22.4	20.1	15.9	26.4	23.2	20.8	16	150
155	21.5	19.6	17.8	15	23.3	20.9	18.8	15.3	24.7	21.8	19.6	15.5	25.7	22.5	20.2	15.7	155
160	20.8	19	17.3	14.7	22.4	20.2	18.3	15	23.9	21.2	19.1	15.2	25	21.9	19.8	15.4	160
165	20.1	18.5	16.8	14.4	21.5	19.6	17.8	14.7	23.1	20.5	18.7	14.9	24.3	21.3	19.3	15.1	165
170	19.4	18	16.4	14.2	20.8	19	17.3	14.4	22.3	19.9	18.2	14.7	23.6	20.8	18.9	14.9	170
175	18.8	17.4	16	13.9	20.2	18.5	16.9	14.2	21.5	19.3	17.8	14.4	22.8	20.2	18.4	14.6	175
180	18.1	16.9	15.6	13.7	19.6	18	16.5	13.9	20.8	18.8	17.3	14.2	22.1	19.7	18	14.4	180
185	17.4	16.4	15.3	13.5	19	17.5	16.1	13.7	20.2	18.3	17	14	21.4	19.1	17.6	14.2	185
190	16.9	16	14.9	13.3	18.3	17	15.7	13.5	19.7	17.9	16.6	13.8	20.8	18.6	17.2	14	190
195	16.4	15.6	14.7		17.7	16.5	15.4	13.4	19.1	17.4	16.3	13.6	20.3	18.2	16.9	13.8	195
200	15.9	15.2	14.3		17.1	16.1	15.1	13.2	18.5	17	15.9	13.4	19.7	17.8	16.6	13.6	200
205	15.5	14.8	14.2		16.7	15.7	14.8	13.1	18	16.5	15.6	13.3	19.2	17.4	16.2	13.4	205
210	15	14.5	14		16.2	15.4	14.5		17.4	16.1	15.4	13.1	18.6	16.9	15.9	13.3	210
215	14.6	14.2	13.8		15.8	15	14.3		16.9	15.8	15.1	13	18.1	16.5	15.6	13.1	215
220	14.3	14			15.4	14.7	14.1		16.4	15.5	14.8		17.6	16.1	15.3	13	220
225	14	13.8			14.9	14.4	13.9		16	15.1	14.6		17.1	15.8	15.1	12.9	225
230	13.7				14.5	14.2	13.8		15.6	14.8	14.4		16.6	15.5	14.9		230
235					14.2	13.9			15.3	14.5	14.2		16.2	15.2	14.6		235
240					14	13.8			14.9	14.3	14.1		15.9	14.9	14.4		240
245					13.7				14.5	14.1	13.9		15.5	14.6	14.3		245
250									14.2	13.9			15.2	14.3	14.1		250
255									14	13.7			14.8	14.1	14		255
260									13.7				14.5	14	13.9		260
265									13.5				14.2	13.8			265
270													14	13.6			270
275													13.7	13.5			275
280													13.5				280

t_198_011_02901_00_000

Lifting capacities Forces de levage

TYNZF 135 ft

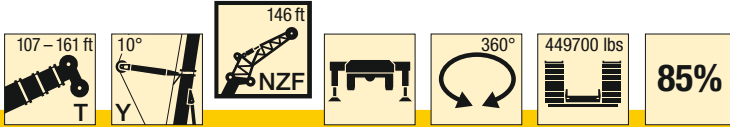


ft	107 ft + 25 ft*				125 ft + 25 ft*				143 ft + 25 ft*				161 ft + 25 ft*				ft
	135 ft				135 ft				135 ft				135 ft				
	0°	10°	20°	38°	0°	10°	20°	38°	0°	10°	20°	38°	0°	10°	20°	38°	
32	61																32
34	59.7				59.4												34
36	58.4				58.3												36
38	57.1				57.2												38
40	55.8				56					56.6							40
45	52.7				53.1					55.7				54.5			45
50	50.2				50.4					53.2				52.4			50
55	47.6				48.1					50.6				50.1			55
60	45.1	37.3			45.9	37.1				48.2				47.7			60
65	42.6	35.6			43.7	35.6				46.1	35.6			45.7			65
70	40.7	34.1			41.6	34.2				44.1	34.2			43.9	35		70
75	38.9	32.7			39.8	32.9				42.1	34.2			42.1	33.9		75
80	37.1	31.3	27.7		38.2	31.6				40.1	32.9			40.3	32.7		80
85	35.3	29.9	26.6		36.6	30.4	26.7			38.5	31.7			38.5	31.5		85
90	33.7	28.8	25.5		35	29.2	25.8			37	30.6	26.5		37.1	30.5		90
95	32.2	27.8	24.5		33.4	28.2	24.9			35.6	29.5	25.8		35.8	29.4	25.7	95
100	31	26.7	23.5		32	27.2	24			34.2	28.4	25		34.5	28.4	24.9	100
105	29.8	25.6	22.6		30.8	26.3	23.1			32.8	27.5	24.2		33.3	27.5	24.2	105
110	28.6	24.6	21.8		29.8	25.3	22.3			31.5	26.6	23.5		32	26.7	23.5	110
115	27.5	23.7	21	16.2	28.7	24.4	21.6	16.3		30.3	25.8	22.7		30.8	25.9	22.9	115
120	26.3	22.8	20.2	15.7	27.6	23.6	20.8	15.8		29.4	24.9	22		29.6	25.1	22.2	120
125	25	21.9	19.6	15.2	26.4	22.8	20.1	15.3		28.4	24	21.3	15.8	28.8	24.3	21.6	125
130	24.1	21	18.9	14.8	25.3	22	19.5	14.9		27.5	23.3	20.6	15.4	27.9	23.5	21	130
135	23.2	20.1	18.3	14.3	24.3	21.2	18.9	14.5		26.5	22.6	19.9	15	27	22.9	20.3	135
140	22.3	19.4	17.6	13.9	23.4	20.4	18.3	14.1		26.2	21.9	19.4	14.6	26.2	22.2	19.7	140
145	21.3	18.7	17.1	13.6	22.6	19.6	17.7	13.8		25.6	21.2	18.8	14.3	25.3	21.6	19.2	145
150	20.4	18.1	16.5	13.2	22.6	19.6	17.7	13.8		24.6	21.2	18.8	14.3	24.5	21	18.7	150
155	19.5	17.4	16	12.8	21.8	19	17.2	13.4		23.7	20.5	18.3	13.9	23.6	20.4	18.2	155
160	18.7	16.8	15.5	12.5	21	18.4	16.7	13.1		22.9	19.8	17.8	13.6	22.8	19.8	17.7	160
165	18	16.1	15.1	12.2	20.3	17.8	16.2	12.8		22.2	19.1	17.2	13.3	22.2	19.2	17.2	165
170	17.4	15.7	14.6	12	19.5	17.2	15.8	12.5		21.5	18.6	16.8	13	21.5	18.6	16.7	170
175	16.8	15.2	14.2	11.7	18.7	16.7	15.3	12.2		20.8	18	16.3	12.7	20.9	18.1	16.3	175
180	16.2	14.7	13.8	11.4	18	16.1	14.9	11.9		20.1	17.5	15.9	12.4	20.3	17.7	15.9	180
185	15.6	14.3	13.4	11.2	17.4	15.6	14.5	11.7		19.4	17	15.5	12.2	19.7	17.2	15.5	185
190	15	13.8	13.1	11	16.9	15.2	14.1	11.5		18.7	16.5	15.1	11.9	19.1	16.7	15.2	190
195	14.4	13.3	12.8	10.8	16.3	14.8	13.8	11.3		18.1	15.9	14.7	11.7	18.5	16.2	14.8	195
200	13.9	13	12.5	10.7	16.3	14.8	13.8	11.3		17.5	15.5	14.3	11.5	17.9	15.7	14.4	200
205	13.5	12.7	12.2	10.6	15.8	14.3	13.4	11.1		17	15.1	14	11.3	17.4	15.3	14.1	205
210	13.1	12.4	11.9		15.2	13.9	13.1	10.9		16.5	14.7	13.7	11.1	16.9	14.9	13.8	210
215	12.7	12	11.7		14.7	13.5	12.8	10.7		16	14.3	13.4	10.9	16.4	14.5	13.5	215
220	12.2	11.7	11.5		14.2	13.1	12.5	10.6		15.5	13.9	13.1	10.8	16	14.2	13.2	220
225	11.9	11.5	11.3		13.8	12.8	12.3	10.5		15	13.5	12.8	10.6	16.4	14.5	13.5	225
230	11.6	11.3			13.4	12.5	12			14.5	13.1	12.5	10.5	16	14.2	13.2	230
235	11.3	11.1			13	12.2	11.7			14.5	13.1	12.5	10.5	15.5	13.8	12.9	235
240	11				12.7	11.9	11.6			14	12.8	12.3	10.4	14.6	13.1	12.4	240
245					12.3	11.6	11.4			13.7	12.5	12.1		14.2	12.8	12.2	245
250					11.9	11.4	11.3			13.3	12.3	11.8		14.2	12.8	12.2	250
255					11.6	11.2				13	12	11.6		13.8	12.6	12	255
260					11.4	11				12.6	11.7	11.5		13.4	12.3	11.8	260
265					11.4	11				12.3	11.5	11.3		13.1	12.1	11.6	265
270					11.1					11.9	11.3	11.2		12.8	11.8	11.5	270
275										11.6	11.1			12.5	11.6	11.3	275
280										11.4	11			12.2	11.4	11.2	280
285										11.2	10.9			11.8	11.2	11.1	285
290										11				11.6	11.1		290
														10.9			290

t_198.011_03001_00_000

Lifting capacities Forces de levage

TYNZF 146 ft



ft	107 ft + 25 ft*				125 ft + 25 ft*				143 ft + 25 ft*				161 ft + 25 ft*				ft
	146 ft				146 ft				146 ft				146 ft				
	0°	10°	20°	38°	0°	10°	20°	38°	0°	10°	20°	38°	0°	10°	20°	38°	
32	55.7																32
34	54.5																34
36	53.3				52.4												36
38	52.1				51.4												38
40	50.9				50.4				50								40
45	47.9				47.9				47.9				47.2				45
50	45.4				45.5				45.7				45.2				50
55	43.2				43.4				43.5				43.1				55
60	41	33.7			41.5				41.6				41.2				60
65	38.8	32.3			39.6	32.2			39.9				39.6				65
70	36.8	30.9			37.7	30.9			38.2	31			38	31.2			70
75	35.2	29.6			35.9	29.7			36.5	30			36.4	30			75
80	33.7	28.4			34.4	28.8			34.8	28.9			34.8	28.9			80
85	32.2	27.2	24.1		33	27.8			33.4	27.9			33.4	27.9			85
90	30.6	26	23.2		31.7	26.7	23.2		32.2	26.9			32.2	27			90
95	29.3	25.1	22.4		30.3	25.7	22.5		30.9	25.9	22.4		31.1	26	22.2		95
100	28	24.1	21.5		29	24.7	21.7		29.7	24.9	21.7		29.9	25.1	21.6		100
105	27	23.2	20.6		27.7	23.9	20.9		28.5	24.1	21.1		28.8	24.3	21		105
110	26	22.2	19.8		26.8	23	20.2		27.3	23.3	20.4		27.7	23.5	20.4		110
115	24.9	21.4	19		25.8	22.2	19.4		26.3	22.5	19.8		26.7	22.8	19.8		115
120	23.9	20.6	18.3		24.9	21.3	18.8		25.5	21.7	19.1		25.7	22	19.2		120
125	22.9	19.8	17.6	13.6	24	20.6	18.1	13.6	24.6	20.9	18.5		24.9	21.3	18.7		125
130	21.9	19	17	13.1	23.1	19.9	17.5	13.2	23.8	20.3	17.9	13.2	24.2	20.6	18.1	13.3	130
135	21	18.3	16.4	12.7	22.2	19.2	16.9	12.8	23	19.7	17.3	12.9	23.4	20.1	17.6	12.9	135
140	20.2	17.5	15.8	12.3	21.3	18.5	16.4	12.4	22.1	19.1	16.8	12.5	22.7	19.5	17.1	12.5	140
145	19.4	16.8	15.3	11.9	20.5	17.8	15.9	12.1	21.3	18.5	16.3	12.2	21.9	19	16.6	12.2	145
150	18.7	16.2	14.7	11.6	19.7	17.2	15.3	11.7	20.5	17.9	15.8	11.8	21.2	18.4	16.1	11.9	150
155	17.9	15.7	14.2	11.3	19.1	16.5	14.8	11.4	19.8	17.3	15.3	11.5	20.4	17.9	15.7	11.6	155
160	17.2	15.1	13.8	10.9	18.4	16	14.4	11.1	19.1	16.7	14.9	11.3	19.7	17.3	15.3	11.3	160
165	16.4	14.5	13.3	10.6	17.7	15.5	13.9	10.8	18.5	16.1	14.4	11	19.1	16.8	14.8	11.1	165
170	15.7	14	12.9	10.3	17.1	15	13.5	10.5	18	15.7	14	10.7	18.5	16.3	14.4	10.8	170
175	15.1	13.5	12.5	10.1	16.4	14.4	13.1	10.3	17.4	15.2	13.6	10.5	18	15.9	14	10.6	175
180	14.6	13	12.1	9.8	15.7	13.9	12.7	10	16.8	14.7	13.2	10.2	17.5	15.4	13.6	10.3	180
185	14.1	12.6	11.8	9.6	15.2	13.4	12.3	9.8	16.2	14.2	12.8	10	17	14.9	13.3	10.1	185
190	13.6	12.2	11.4	9.4	14.7	13	12	9.6	15.6	13.7	12.5	9.8	16.5	14.5	12.9	9.9	190
195	13.1	11.8	11.1	9.2	14.2	12.6	11.7	9.4	15.1	13.3	12.1	9.6	15.9	14.1	12.6	9.7	195
200	12.5	11.4	10.8	9	13.7	12.3	11.4	9.2	14.6	12.9	11.8	9.4	15.4	13.6	12.3	9.5	200
205	12	11	10.5	8.9	13.2	11.9	11.1	9	14.2	12.6	11.6	9.2	14.9	13.2	11.9	9.4	205
210	11.6	10.7	10.2	8.7	12.8	11.5	10.7	8.9	13.7	12.2	11.3	9	14.5	12.9	11.7	9.2	210
215	11.3	10.4	10	8.6	12.3	11.1	10.5	8.8	13.3	11.9	11	8.9	14.1	12.5	11.4	9	215
220	10.9	10.1	9.7		11.8	10.8	10.3	8.6	12.9	11.5	10.7	8.8	13.7	12.2	11.2	8.9	220
225	10.5	9.8	9.5		11.5	10.5	10	8.6	12.4	11.1	10.5	8.7	13.3	11.9	10.9	8.8	225
230	10.2	9.5	9.4		11.1	10.2	9.8		12	10.8	10.3	8.6	12.9	11.5	10.6	8.7	230
235	9.8	9.3	9.2		10.8	10	9.6		11.6	10.6	10.1	8.5	12.5	11.2	10.4	8.6	235
240	9.6	9.1			10.4	9.7	9.4		11.3	10.3	9.8	8.4	12.1	10.9	10.2	8.5	240
245	9.3	9			10.1	9.4	9.3		11	10.1	9.6		11.7	10.6	10	8.4	245
250	9				9.8	9.3	9.1		10.6	9.8	9.5		11.3	10.4	9.8	8.4	250
255					9.5	9.1	9		10.3	9.6	9.3		11	10.2	9.6		255
260					9.3	9			10	9.4	9.2		10.8	9.9	9.5		260
265					9.1				9.7	9.2	9.1		10.5	9.7	9.3		265
270					8.9				9.5	9.1	9		10.2	9.5	9.2		270
275									9.3	8.9			9.9	9.3	9.1		275
280									9.1	8.8			9.7	9.1	9		280
285									8.9				9.4	9	8.9		285
290													9.3	8.9			290
295													9.1	8.8			295
300													8.9				300
305													8.8				305

t_198.011_03101_00_000

Lifting capacities Forces de levage

TYNZF 157 ft



ft	107 ft + 25 ft*				125 ft + 25 ft*				143 ft + 25 ft*				161 ft + 25 ft*				ft
	157 ft				157 ft				157 ft				157 ft				
	0°	10°	20°	38°	0°	10°	20°	38°	0°	10°	20°	38°	0°	10°	20°	38°	
34	48.9																34
36	48																36
38	46.9				46.1												38
40	45.9				45.3												40
45	43.3				43.1				42.9				42.3				45
50	40.9				41				41				40.5				50
55	39				39				39.1				38.7				55
60	37.1				37.3				37.3				37				60
65	35.2	30.1			35.7				35.8				35.4				65
70	33.3	28.8			34	28.6			34.3				34.1				70
75	31.7	27.5			32.4	27.5			32.8	27.5			32.7	27.2			75
80	30.4	26.3			31	26.4			31.3	26.4			31.3	26.2			80
85	29	25.3			29.7	25.4			29.9	25.4			29.9	25.3			85
90	27.7	24.2	20.8		28.5	24.4			28.8	24.5			28.7	24.4			90
95	26.4	23.2	20		27.3	23.5	19.9		27.7	23.7			27.7	23.6			95
100	25.2	22.3	19.3		26.1	22.6	19.3		26.6	22.8	19.2		26.7	22.8	19.1		100
105	24.1	21.5	18.5		25	21.8	18.6		25.5	22	18.6		25.7	22	18.5		105
110	23.2	20.6	17.8		23.8	21.1	18		24.5	21.2	18		24.8	21.2	17.9		110
115	22.3	19.8	17.1		23	20.3	17.4		23.4	20.5	17.5		23.8	20.6	17.4		115
120	21.4	19	16.4		22.2	19.5	16.7		22.6	19.8	16.9		22.9	19.9	16.9		120
125	20.6	18.3	15.8		21.4	18.8	16.1		21.9	19.2	16.4		22	19.3	16.4		125
130	19.7	17.6	15.1	11.5	20.6	18.2	15.6		21.1	18.5	15.8		21.4	18.7	15.9		130
135	18.8	17	14.5	11	19.8	17.5	15	11.1	20.4	17.9	15.3		20.7	18.1	15.4		135
140	18	16.3	14	10.7	19	17	14.4	10.7	19.7	17.3	14.8	10.7	20	17.5	15	10.7	140
145	17.3	15.6	13.5	10.3	18.2	16.3	13.9	10.4	18.9	16.8	14.3	10.4	19.4	17	14.5	10.4	145
150	16.6	14.9	13	9.9	17.5	15.7	13.5	10	18.2	16.3	13.8	10.1	18.7	16.5	14.1	10.1	150
155	16	14.3	12.5	9.6	16.8	15.1	13	9.7	17.5	15.8	13.4	9.8	18	16.1	13.7	9.8	155
160	15.3	13.8	12	9.3	16.2	14.5	12.6	9.4	16.9	15.2	13	9.5	17.4	15.6	13.3	9.6	160
165	14.7	13.3	11.6	9	15.7	14	12.1	9.1	16.2	14.7	12.6	9.2	16.7	15.1	12.9	9.3	165
170	14	12.8	11.2	8.7	15.1	13.6	11.7	8.9	15.8	14.2	12.1	9	16.2	14.6	12.5	9.1	170
175	13.4	12.3	10.8	8.5	14.5	13.1	11.3	8.6	15.3	13.8	11.7	8.8	15.7	14.2	12.1	8.9	175
180	12.9	11.8	10.4	8.3	13.9	12.7	11	8.4	14.8	13.3	11.4	8.5	15.2	13.7	11.7	8.7	180
185	12.4	11.3	10.1	8.1	13.4	12.2	10.6	8.2	14.3	12.9	11	8.3	14.8	13.3	11.4	8.5	185
190	11.9	11	9.7	7.9	12.8	11.7	10.3	8	13.8	12.5	10.7	8.2	14.3	13	11.1	8.3	190
195	11.4	10.6	9.5	7.7	12.3	11.3	9.9	7.8	13.3	12	10.4	8	13.9	12.6	10.8	8.1	195
200	11	10.2	9.2	7.5	11.9	10.9	9.6	7.7	12.8	11.6	10.1	7.8	13.4	12.2	10.5	8	200
205	10.5	9.8	8.9	7.4	11.5	10.6	9.4	7.5	12.3	11.2	9.7	7.7	13	11.8	10.2	7.8	205
210	10.1	9.5	8.6	7.2	11.1	10.2	9.1	7.4	11.9	10.8	9.5	7.5	12.5	11.4	9.9	7.6	210
215	9.6	9.1	8.4	7.1	10.7	9.9	8.9	7.2	11.5	10.5	9.3	7.4	12.2	11	9.6	7.5	215
220	9.3	8.9	8.2	7	10.3	9.5	8.6	7.1	11.1	10.2	9.1	7.3	11.8	10.7	9.4	7.4	220
225	9	8.6	8	6.9	9.8	9.2	8.4	7	10.7	9.9	8.8	7.1	11.4	10.4	9.2	7.2	225
230	8.7	8.4	7.8		9.4	8.9	8.2	6.9	10.4	9.6	8.6	7	11	10.1	8.9	7.1	230
235	8.4	8.1	7.7		9.2	8.7	8	6.8	10	9.3	8.4	6.9	10.7	9.8	8.7	7	235
240	8.1	7.9	7.5		8.9	8.5	7.9	6.8	9.6	9	8.2	6.8	10.4	9.5	8.5	6.9	240
245	7.9	7.7	7.4		8.6	8.3	7.7		9.2	8.7	8	6.8	10	9.2	8.3	6.8	245
250	7.7	7.6	7.3		8.4	8	7.6		9	8.5	7.9	6.7	9.7	9	8.2	6.8	250
255	7.5	7.4			8.1	7.8	7.4		8.7	8.3	7.7		9.3	8.7	8	6.7	255
260	7.3				7.8	7.7	7.3		8.5	8.1	7.6		9	8.5	7.9	6.6	260
265					7.6	7.5	7.2		8.3	7.9	7.5		8.8	8.4	7.7		265
270					7.5	7.4			8	7.7	7.4		8.6	8.2	7.6		270
275					7.3	7.3			7.8	7.6	7.3		8.4	8	7.5		275
280					7.1				7.6	7.5	7.2		8.1	7.8	7.4		280
285									7.4	7.3			7.9	7.7	7.3		285
290									7.3	7.2			7.7	7.6	7.2		290
295									7.1				7.5	7.4	7.1		295
300													7.4	7.3			300
305													7.2	7.2			305
310													7.1				310
315													7				315

t_198_011_03201_00_000

Lifting capacities Forces de levage

TYNZF 169 ft

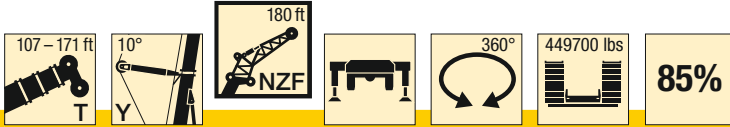


ft	107 ft + 25 ft*				125 ft + 25 ft*				143 ft + 25 ft*				161 ft + 25 ft*				ft
	169 ft				169 ft				169 ft				169 ft				
	0°	10°	20°	38°	0°	10°	20°	38°	0°	10°	20°	38°	0°	10°	20°	38°	
36	43.2																36
38	42.4				41.3												38
40	41.5				40.8												40
45	39.3				39					38.6							45
50	37.1				37.1					37				36.6			50
55	35.3				35.3					35.4				35			55
60	33.7				33.8					33.8				33.5			60
65	32.1				32.4					32.4				32.1			65
70	30.5	26.3			30.9					31.1				30.8			70
75	28.8	25.2			29.6	25				29.8	25			29.6			75
80	27.7	24			28.1	24				28.5	24.1			28.4	23.8		80
85	26.5	23.1			26.9	23.1				27.2	23.2			27.2	23		85
90	25.4	22.1			25.9	22.2				26	22.3			26.1	22.1		90
95	24.2	21.2			24.9	21.4				25.1	21.5			25	21.4		95
100	23.1	20.3	17.6		23.8	20.6	17.4			24.2	20.8			24.2	20.7		100
105	22.1	19.6	16.9		22.8	19.8	16.9			23.2	20	16.8		23.3	19.9		105
110	21.1	18.8	16.3		21.8	19.1	16.3			22.3	19.2	16.3		22.5	19.2	16.1	110
115	20.3	18.1	15.6		20.8	18.5	15.8			21.4	18.6	15.8		21.6	18.6	15.6	115
120	19.6	17.4	15		20.1	17.8	15.2			20.4	18	15.3		20.8	18	15.1	120
125	18.8	16.7	14.4		19.4	17.1	14.7			19.7	17.4	14.8		19.9	17.4	14.7	125
130	18	16.1	13.9		18.7	16.5	14.2			19.1	16.8	14.3		19.2	16.9	14.3	130
135	17.3	15.5	13.3		18	15.9	13.7			18.5	16.2	13.8		18.6	16.3	13.8	135
140	16.5	14.9	12.7	9.6	17.3	15.4	13.1			17.8	15.6	13.4		18	15.8	13.4	140
145	15.8	14.3	12.2	9.2	16.6	14.8	12.6	9.3		17.2	15.1	12.9	9.2	17.4	15.3	13	145
150	15.1	13.7	11.8	8.9	15.9	14.3	12.2	9		16.5	14.7	12.5	9	16.9	14.8	12.6	150
155	14.5	13.1	11.3	8.6	15.3	13.8	11.8	8.7		15.9	14.2	12.1	8.7	16.3	14.4	12.3	155
160	14	12.5	10.9	8.4	14.7	13.3	11.3	8.4		15.3	13.7	11.7	8.5	15.7	14	11.9	160
165	13.4	12.1	10.4	8.1	14.1	12.8	10.9	8.2		14.7	13.3	11.3	8.3	15.1	13.6	11.5	165
170	12.8	11.6	10.1	7.9	13.6	12.3	10.5	7.9		14.1	12.8	10.9	8	14.5	13.2	11.2	170
175	12.3	11.2	9.7	7.6	13.1	11.9	10.2	7.7		13.7	12.4	10.6	7.8	14	12.7	10.8	175
180	11.7	10.7	9.4	7.4	12.6	11.5	9.8	7.5		13.2	12	10.2	7.6	13.5	12.3	10.5	180
185	11.2	10.3	9.1	7.2	12.1	11	9.5	7.3		12.8	11.6	9.9	7.4	13.1	11.9	10.1	185
190	10.7	9.8	8.7	7	11.6	10.6	9.2	7.1		12.3	11.2	9.5	7.2	12.8	11.5	9.8	190
195	10.4	9.5	8.4	6.8	11.1	10.2	8.9	6.9		11.9	10.8	9.3	7.1	12.4	11.2	9.5	195
200	10	9.2	8.2	6.6	10.7	9.8	8.6	6.8		11.5	10.4	9	6.9	12	10.9	9.3	200
205	9.6	8.9	8	6.5	10.3	9.4	8.3	6.6		11	10	8.7	6.7	11.6	10.5	9	205
210	9.2	8.6	7.7	6.3	10	9.1	8.1	6.5		10.6	9.7	8.5	6.6	11.2	10.2	8.8	210
215	8.8	8.3	7.5	6.2	9.6	8.9	7.9	6.3		10.2	9.3	8.2	6.4	10.8	9.9	8.5	215
220	8.4	8	7.3	6.1	9.3	8.6	7.7	6.2		9.9	9.1	8	6.3	10.4	9.5	8.3	220
225	8.1	7.7	7.1	5.9	8.9	8.3	7.5	6.1		9.6	8.8	7.8	6.2	10.1	9.2	8	225
230	7.8	7.5	6.9	5.8	8.6	8	7.3	6		9.3	8.6	7.6	6.1	9.8	9	7.9	230
235	7.6	7.3	6.8	5.7	8.2	7.8	7.1	5.8		9	8.3	7.4	5.9	9.5	8.7	7.7	235
240	7.3	7.1	6.6		7.9	7.5	6.9	5.7		8.6	8.1	7.2	5.8	9.2	8.5	7.5	240
245	7.1	6.9	6.4		7.7	7.3	6.8	5.7		8.3	7.8	7.1	5.7	8.9	8.3	7.4	245
250	6.8	6.7	6.3		7.4	7.1	6.6	5.6		8	7.6	6.9	5.7	8.6	8	7.2	250
255	6.6	6.5	6.2		7.2	7	6.5			7.7	7.4	6.8	5.6	8.4	7.8	7	255
260	6.4	6.4	6.1		7	6.8	6.3			7.5	7.2	6.6	5.5	8.1	7.6	6.9	260
265	6.3	6.2			6.8	6.6	6.2			7.3	7	6.5		7.8	7.4	6.7	265
270	6.1	6.1			6.6	6.4	6.1			7.1	6.8	6.3		7.5	7.2	6.6	270
275	5.9				6.4	6.3	6			6.9	6.7	6.2		7.4	7	6.5	275
280					6.2	6.2				6.7	6.5	6.1		7.2	6.9	6.3	280
285					6.1	6.1				6.5	6.4	6.1		7	6.7	6.2	285
290					5.9					6.3	6.3	6		6.8	6.6	6.1	290
295										6.2	6.1			6.6	6.4	6.1	295
300										6	6			6.4	6.3	6	300
305										5.9				6.3	6.2	5.9	305
310										5.8				6.1	6.1		310
315														6	6		315
320														5.9	5.9		320
325														5.8			325

t_198_011_03301_00_000

Lifting capacities Forces de levage

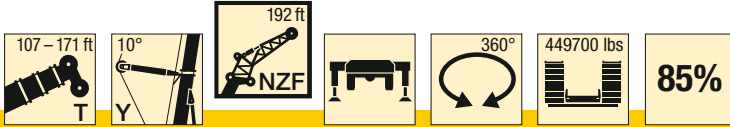
TYNZF 180 ft



ft	107 ft + 25 ft*				125 ft + 25 ft*				143 ft + 25 ft*				161 ft + 25 ft*				164 ft + 25 ft*				167 ft + 25 ft*				171 ft + 25 ft*				ft		
	180 ft				180 ft				180 ft				180 ft				180 ft				180 ft										
	0°	10°	20°	38°	0°	10°	20°	38°	0°	10°	20°	38°	0°	10°	20°	38°	0°	10°	20°	38°	0°	10°	20°	38°	0°	10°	20°	38°			
38	38.3																											38			
40	37.6				36.7																							40			
45	35.6				35.1					34.7																		45			
50	33.7				33.5					33.3				32.8			32.5					32.3				32.1		50			
55	31.9				31.9					31.9				31.5			31.2					31.1				31		55			
60	30.5				30.4					30.4				30.1			30					29.8				29.7		60			
65	29				29.1					29.1				28.8			28.7					28.5				28.4		65			
70	27.6				27.9					27.9				27.6			27.4					27.3				27.2		70			
75	26.2	22.7			26.6	22.4				26.8				26.6			26.4					26.3				26.2		75			
80	24.9	21.7			25.4	21.6				25.7	21.5			25.5			25.4					25.3				25.2		80			
85	23.8	20.8			24.2	20.7				24.5	20.7			24.4	20.5		24.4	20.4				24.3	20.3			24.2	20.2	85			
90	22.8	19.9			23.2	19.9				23.4	19.9			23.4	19.8		23.3	19.7				23.3	19.6			23.3	19.6	90			
95	21.8	19.1			22.3	19.1				22.4	19.1			22.4	19		22.3	18.9				22.3	18.9			22.3	18.8	95			
100	20.8	18.3			21.4	18.4				21.6	18.5			21.5	18.3		21.4	18.2				21.4	18.2			21.3	18.1	100			
105	19.8	17.5	15		20.5	17.7				20.8	17.8			20.8	17.7		20.7	17.6				20.6	17.6			20.6	17.5	105			
110	18.9	16.8	14.4		19.6	17	14.3			19.9	17.1	14.3		20	17.1		20	17				19.9	17			19.9	17	110			
115	18.1	16.1	13.9		18.7	16.4	13.8			19.1	16.5	13.8		19.2	16.5	13.7	19.2	16.4	13.6			19.2	16.4	13.6		19.2	16.4	13.5	115		
120	17.4	15.5	13.3		17.8	15.8	13.3			18.3	15.9	13.3		18.5	15.9	13.2	18.5	15.8	13.2			18.5	15.8	13.2		18.5	15.8	13.1	120		
125	16.7	14.8	12.8		17.2	15.2	12.9			17.4	15.3	12.9		17.7	15.3	12.8	17.7	15.3	12.8			17.7	15.3	12.7		17.8	15.2	12.7	125		
130	16	14.2	12.3		16.6	14.6	12.4			16.8	14.8	12.4		17	14.8	12.4	17	14.8	12.3			17	14.8	12.3		17.1	14.8	12.3	130		
135	15.4	13.7	11.8		16	14	12			16.2	14.2	12		16.3	14.4	12	16.3	14.3	11.9			16.3	14.3	11.9		16.3	14.3	11.9	135		
140	14.7	13.1	11.3		15.3	13.5	11.5			15.7	13.7	11.6		15.8	13.9	11.6	15.8	13.8	11.6			15.8	13.8	11.5		15.8	13.8	11.5	140		
145	14	12.6	10.8		14.7	13	11.1			15.1	13.2	11.2		15.3	13.3	11.2	15.3	13.3	11.2			15.3	13.4	11.2		15.3	13.4	11.1	145		
150	13.3	12.1	10.3	7.8	14.1	12.6	10.6			14.6	12.8	10.8		14.8	12.8	10.9	14.8	12.9	10.8			14.8	12.9	10.8		14.8	12.9	10.8	150		
155	12.8	11.6	9.9	7.5	13.5	12.1	10.2	7.5		14	12.4	10.5	7.5	14.3	12.5	10.5	14.3	12.5	10.5			14.3	12.5	10.5		14.3	12.5	10.5	155		
160	12.2	11.1	9.5	7.2	12.9	11.7	9.9	7.2		13.4	12	10.1	7.3	13.7	12.1	10.2	7.3	13.8	12.1	10.2	7.2		13.8	12.1	10.2	7.2	13.8	12.1	10.2	7.2	160
165	11.7	10.6	9.2	6.9	12.3	11.2	9.5	7		12.9	11.5	9.7	7	13.2	11.7	9.8	7	13.3	11.7	9.8	7		13.3	11.7	9.9	7	13.4	11.7	9.9	7	165
170	11.3	10.2	8.8	6.6	11.8	10.8	9.2	6.7		12.3	11.1	9.4	6.8	12.7	11.3	9.6	6.8	12.8	11.4	9.5	6.8		12.8	11.4	9.6	6.8	12.9	11.4	9.6	6.8	170
175	10.8	9.8	8.4	6.3	11.4	10.3	8.8	6.4		11.8	10.7	9.1	6.5	12.2	11	9.3	6.6	12.2	11	9.3	6.6		12.3	11	9.3	6.6	12.4	11	9.3	6.6	175
180	10.3	9.4	8.1	6	11	10	8.5	6.1		11.4	10.3	8.8	6.3	11.7	10.6	9	6.4	11.8	10.6	9	6.4		11.8	10.7	9	6.4	11.9	10.7	9	6.4	180
185	9.8	9.1	7.8	5.8	10.6	9.6	8.2	5.9	11	9.9	8.5	6.1		11.3	10.2	8.7	6.2	11.3	10.2	8.7	6.2		11.4	10.3	8.7	6.2	11.4	10.3	8.8	6.2	185
190	9.3	8.7	7.6	5.5	10.1	9.3	7.9	5.7	10.6	9.6	8.2	5.9		10.9	9.8	8.4	6	10.9	9.9	8.4	6		10.9	9.9	8.5	6	11	9.9	8.5	6	190
195	8.9	8.3	7.3	5.3	9.7	8.9	7.7	5.5	10.3	9.3	7.9	5.7		10.5	9.5	8.2	5.8	10.6	9.5	8.2	5.8		10.6	9.6	8.2	5.8	10.6	9.6	8.2	5.8	195
200	8.6	8	7.1	5.1	9.3	8.6	7.4	5.3	9.9	9	7.7	5.5		10.2	9.2	7.9	5.6	10.2	9.3	7.9	5.6		10.3	9.3	8	5.6	10.3	9.3	8	5.6	200
205	8.3	7.7	6.8	4.9	8.9	8.2	7.2	5.1	9.5	8.7	7.5	5.3		9.8	9	7.7	5.4	9.9	9	7.7	5.4		9.9	9	7.7	5.4	10	9	7.7	5.4	205
210	7.9	7.4	6.6	4.7	8.5	7.9	6.9	4.9	9.1	8.4	7.2	5.1		9.5	8.7	7.4	5.2	9.5	8.7	7.5	5.3		9.6	8.7	7.5	5.2	9.6	8.7	7.5	5.2	210
215	7.6	7.2	6.4	4.6	8.2	7.6	6.7	4.7	8.7	8.1	7	5		9.2	8.4	7.2	5.1	9.2	8.4	7.3	5.1		9.3	8.5	7.3	5.1	9.3	8.5	7.3	5.1	215
220	7.3	6.9	6.2	4.4	7.9	7.4	6.5	4.6	8.4	7.8	6.8	4.8		8.8	8.1	7	4.9	8.9	8.2	7	4.9		8.9	8.2	7.1	4.9	9	8.2	7.1	4.9	220
225	7	6.6	6	4.3	7.6	7.1	6.3	4.4	8.1	7.5	6.6	4.6		8.5	7.8	6.8	4.7	8.5	7.9	6.8	4.8		8.6	7.9	6.9	4.8	8.7	8	6.9	4.8	225
230	6.7	6.4	5.8	4.1	7.4	6.9	6.1	4.3	7.8	7.3	6.4	4.5		8.2	7.6	6.6	4.6	8.2	7.6	6.6	4.6		8.3	7.7	6.6	4.6	8.3	7.7	6.7	4.6	230
235	6.4	6.1	5.6	4	7.1	6.7	5.9	4.2	7.5	7.1	6.2	4.4		7.9	7.3	6.4	4.5	7.9	7.4	6.4	4.5		8	7.4	6.4	4.5	8	7.4	6.4	4.5	235
240	6.2	5.9	5.4	3.9	6.8	6.4	5.7	4.1	7.3	6.8	6	4.2		7.6	7.1	6.2	4.3	7.6	7.1	6.3	4.3		7.7	7.2	6.3	4.3	7.7	7.2	6.3	4.4	240
245	6	5.8	5.3	3.8	6.5	6.2	5.6	4	7	6.6	5.9	4.1		7.4	6.9	6.1	4.2	7.4	6.9	6.1	4.2		7.4	7	6.1	4.2	7.5	7	6.1	4.2	245
250	5.7	5.6	5.1	3.8	6.2	6	5.4	3.9	6.7	6.4	5.7	4		7.1	6.7	5.9	4.1	7.1	6.7	5.9	4.1		7.2	6.8	5.9	4.1	7.2	6.8	5.9	4.1	250
255	5.5	5.4	5		6	5.8	5.3	3.8	6.5	6.2	5.5	3.9		6.9	6.5	5.7	4	6.9	6.5	5.7	4		7	6.6	5.8	4	7	6.6	5.8	4	255
260	5.3	5.2	4.9		5.8	5.6	5.1	3.8	6.2	6	5.4	3.8		6.6	6.3	5.6	3.9	6.7	6.3	5.6	3.9		6.7	6.4	5.6	3.9	6.8	6.4	5.6	3.9	260
265	5.1	5	4.8		5.6	5.5	5		6	5.8	5.2	3.8		6.4	6.1	5.4	3.8	6.4	6.1	5.4	3.8		6.5	6.2	5.4	3.8	6.6	6.2	5.5	3.8	265
270	4.9	4.9	4.6		5.4	5.3	4.9		5.8	5.6	5.1			6.1	5.8	5.3		6.2	5.9	5.3			6.3	5.9	5.3		6.3	6	5.3		270
275	4.8	4.8			5.2	5.1	4.8		5.6	5.5	5			5.9	5.7	5.1		5.9	5.7	5.1			6	5.7	5.2		6.1	5.8	5.2		275
280	4.6	4.6			5	5	4.7		5.4	5.3	4.8			5.7	5.5	5		5.7	5.6	5			5.8	5.6	5		5.9	5.7	5.1		280
285	4.5				4.8	4.8	4.6		5.2	5.1	4.7			5.5	5.4	4.9		5.5	5.4	4.9			5.6	5.4	4.9		5.7	5.5	5		285
290					4.7	4.7			5	5	4.6			5.4	5.2	4.7		5.4	5.3	4.8			5.4	5.3	4.8		5.5	5.3	4.8		290
295					4.6	4.6			4.8	4.8	4.5			5.2	5.1	4.6															

Lifting capacities Forces de levage

TYNZF 192 ft

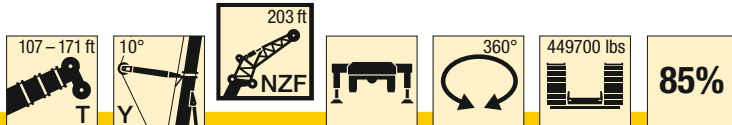


ft	107 ft + 25 ft*			125 ft + 25 ft*			143 ft + 25 ft*			161 ft + 25 ft*			164 ft + 25 ft*			167 ft + 25 ft*			171 ft + 25 ft*			ft		
	192 ft			192 ft			192 ft			192 ft			192 ft			192 ft			192 ft					
	0°	10°	20°	0°	10°	20°	0°	10°	20°	0°	10°	20°	0°	10°	20°	0°	10°	20°	0°	10°	20°			
38	34.4																					38		
40	33.9																					40		
45	32.2			31.6			31.2															45		
50	30.5			30.2			30.3				30.4			30.2			29.9					50		
55	28.9			28.7			29.2				29.2			29			28.9				28.7	55		
60	27.5			27.4			28.1				28			27.8			27.7				27.6	60		
65	26.3			26.2			27				26.7			26.7			26.5				26.5	65		
70	25			25.1			26				25.6			25.5			25.4				25.4	70		
75	23.7	20.4		24			24.9				24.5			24.5			24.4				24.4	75		
80	22.5	19.6		22.9	19.3		23.8				23.5			23.6			23.5				23.5	80		
85	21.4	18.7		21.9	18.6		22.7	18.5			22.5			22.7			22.6				22.6	85		
90	20.5	17.9		20.9	17.8		21.6	17.8			21.5	17.6		21.7	17.5		21.7	17.4			21.7	17.4	90	
95	19.6	17.1		20.1	17.1		20.7	17.1			20.4	16.9		20.8	16.8		20.7	16.8			20.7	16.7	95	
100	18.7	16.4		19.3	16.4		19.8	16.4			19.7	16.3		19.9	16.2		19.9	16.1			19.8	16.1	100	
105	17.8	15.6		18.6	15.8		19	15.8			18.9	15.6		19.2	15.6		19.1	15.5			19.1	15.5	105	
110	17	15	12.8	17.8	15.1		18.2	15.2			18.2	15.1		18.5	15		18.4	15			18.4	15	110	
115	16.1	14.3	12.2	17	14.5	12.2	17.4	14.6			17.5	14.5		17.8	14.5		17.7	14.5			17.7	14.4	115	
120	15.4	13.8	11.7	16.1	13.9	11.7	16.7	14	11.6		16.7	14	11.5	17	13.9	11.4	17	13.9	11.4		17	13.9	11.4	120
125	14.8	13.2	11.2	15.4	13.4	11.2	15.9	13.5	11.2		16	13.4	11.1	16.3	13.4	11	16.3	13.4	11		16.3	13.4	11	125
130	14.2	12.6	10.8	14.8	12.9	10.8	15.2	13	10.8		15.4	13	10.7	15.6	12.9	10.6	15.6	12.9	10.6		15.6	12.9	10.6	130
135	13.6	12	10.3	14.2	12.3	10.4	14.6	12.5	10.4		14.7	12.5	10.3	15	12.5	10.3	15	12.5	10.3		15	12.5	10.2	135
140	13	11.5	9.9	13.6	11.8	9.9	14.1	12	10		14.2	12.1	10	14.4	12.1	9.9	14.4	12	9.9		14.3	12	9.9	140
145	12.4	11.1	9.5	13.1	11.3	9.6	13.6	11.6	9.6		13.7	11.6	9.6	13.9	11.6	9.6	13.9	11.6	9.5		13.9	11.6	9.5	145
150	11.8	10.7	9.1	12.5	10.9	9.2	13	11.1	9.3		13.2	11.2	9.2	13.4	11.2	9.2	13.4	11.2	9.2		13.4	11.2	9.2	150
155	11.2	10.2	8.7	11.9	10.5	8.9	12.5	10.7	8.9		12.7	10.7	8.9	12.9	10.7	8.9	12.9	10.7	8.9		12.9	10.8	8.9	155
160	10.7	9.8	8.3	11.4	10.1	8.5	11.9	10.3	8.6		12.2	10.4	8.6	12.4	10.4	8.6	12.4	10.3	8.6		12.4	10.4	8.6	160
165	10.2	9.3	8	10.8	9.7	8.2	11.4	9.9	8.3		11.7	10	8.3	11.9	10	8.3	11.9	10	8.3		12	10	8.3	165
170	9.8	8.9	7.7	10.3	9.3	7.9	10.9	9.6	8		11.2	9.7	8	11.4	9.7	8	11.5	9.7	8		11.5	9.7	8	170
175	9.4	8.5	7.4	9.8	8.9	7.6	10.4	9.2	7.7		10.7	9.3	7.7	10.9	9.4	7.7	11	9.3	7.7		11	9.4	7.7	175
180	8.9	8.2	7.1	9.5	8.5	7.3	10	8.8	7.4		10.3	9	7.5	10.5	9	7.4	10.5	9	7.4		10.6	9.1	7.5	180
185	8.5	7.9	6.8	9.1	8.2	7	9.6	8.5	7.2		9.8	8.7	7.2	10	8.7	7.2	10	8.7	7.2		10.1	8.7	7.2	185
190	8.1	7.5	6.4	8.7	7.9	6.7	9.2	8.1	6.9		9.5	8.3	7	9.6	8.4	7	9.6	8.4	7		9.7	8.4	7	190
195	7.7	7.2	6.1	8.4	7.6	6.4	8.8	7.8	6.6		9.1	8	6.7	9.2	8	6.7	9.3	8	6.7		9.3	8.1	6.7	195
200	7.4	6.9	5.8	8	7.3	6.1	8.5	7.5	6.3		8.8	7.7	6.5	8.9	7.7	6.5	8.9	7.7	6.5		9	7.8	6.5	200
205	7	6.6	5.5	7.6	7	5.8	8.1	7.3	6		8.4	7.4	6.2	8.6	7.4	6.2	8.6	7.4	6.2		8.6	7.5	6.3	205
210	6.7	6.3	5.2	7.2	6.7	5.5	7.8	7	5.8		8.1	7.2	5.9	8.3	7.2	6	8.3	7.2	6		8.3	7.2	6	210
215	6.4	6	4.9	6.9	6.4	5.3	7.4	6.7	5.5		7.8	6.9	5.7	7.9	6.9	5.7	8	6.9	5.7		8	7	5.8	215
220	6.1	5.7	4.6	6.6	6.1	5	7.1	6.4	5.3		7.4	6.7	5.4	7.6	6.7	5.5	7.7	6.7	5.5		7.7	6.7	5.5	220
225	5.9	5.4	4.4	6.3	5.9	4.7	6.8	6.2	5		7.1	6.4	5.2	7.3	6.4	5.2	7.3	6.5	5.2		7.4	6.5	5.3	225
230	5.5	5.1	4.1	6.1	5.6	4.5	6.5	5.9	4.7		6.8	6.2	5	6.9	6.2	5	7	6.2	5		7.1	6.3	5.1	230
235	5.2	4.8	3.9	5.8	5.4	4.3	6.2	5.7	4.5		6.5	5.9	4.7	6.6	5.9	4.7	6.7	6	4.8		6.8	6	4.8	235
240	4.9	4.5		5.5	5.1	4	6	5.5	4.3		6.2	5.7	4.5	6.4	5.7	4.5	6.4	5.7	4.5		6.4	5.8	4.6	240
245	4.6	4.2		5.2	4.8	3.8	5.7	5.2	4.1		6	5.5	4.3	6.1	5.5	4.3	6.2	5.5	4.3		6.2	5.6	4.4	245
250	4.3	4		4.9	4.5		5.5	5	3.9		5.8	5.3	4.1	5.9	5.3	4.1	5.9	5.3	4.1		6	5.4	4.2	250
255	4.1	3.8		4.6	4.3		5.2	4.7			5.5	5	3.9	5.7	5.1	3.9	5.7	5.1	4		5.7	5.2	4	255
260	3.8			4.3	4		4.9	4.5			5.3	4.8		5.4	4.9		5.5	4.9	3.8		5.5	5	3.8	260
265				4.1	3.8		4.7	4.2			5.1	4.6		5.2	4.6		5.3	4.7			5.3	4.7		265
270				3.9			4.3	4			4.9	4.4		5	4.4		5	4.5			5.1	4.5		270
275							4.1	3.8			4.6	4.1		4.7	4.2		4.8	4.3			4.9	4.3		275
280							3.9				4.3	3.9		4.5	4		4.6	4			4.6	4.1		280
285											4.1			4.2	3.8		4.3	3.8			4.4	3.9		285
290											3.9			4			4				4.1			290
295														3.8			3.8				3.9			295

t_198_011_03501_00_000

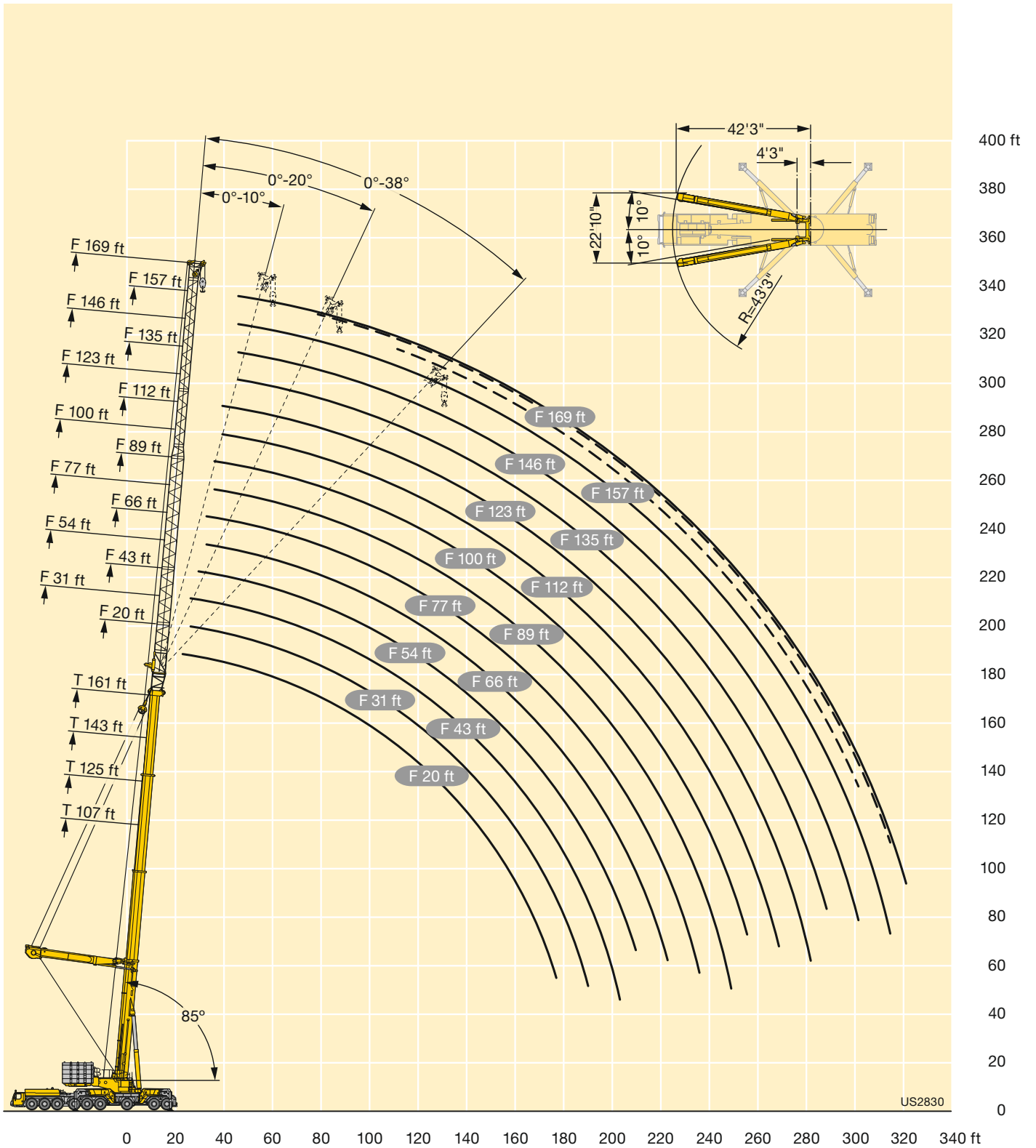
Lifting capacities Forces de levage

TYNZF 203 ft



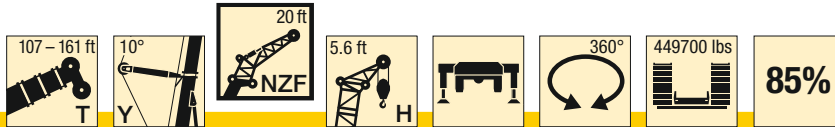
ft	107 ft + 25 ft*			125 ft + 25 ft*			143 ft + 25 ft*			161 ft + 25 ft*			164 ft + 25 ft*			167 ft + 25 ft*			171 ft + 25 ft*			ft
	203 ft			203 ft			203 ft			203 ft			203 ft			203 ft			203 ft			
	0°	10°	20°	0°	10°	20°	0°	10°	20°	0°	10°	20°	0°	10°	20°	0°	10°	20°	0°	10°	20°	
40	30.9																					40
45	29.6			29.2																		45
50	28.2			27.9			27.6															50
55	26.8			26.7			26.5			26.2			26			25.8			25.7			55
60	25.6			25.4			25.4			25.1			24.9			24.8			24.7			60
65	24.4			24.3			24.3			24			23.9			23.8			23.7			65
70	23.3			23.3			23.2			23			22.9			22.8			22.7			70
75	22.2			22.3			22.3			22			21.9			21.8			21.7			75
80	21	17.5		21.3			21.4			21.2			21.1			21			20.9			80
85	20	16.7		20.3	16.5		20.5			20.4			20.2			20.2			20.1			85
90	19.1	15.9		19.3	15.8		19.6	15.8		19.5	15.4		19.4			19.4			19.3			90
95	18.2	15.2		18.4	15.2		18.7	15.1		18.7	14.9		18.6	14.8		18.6	14.8		18.6	14.7		95
100	17.4	14.5		17.7	14.5		17.8	14.5		17.9	14.3		17.8	14.2		17.7	14.2		17.8	14.2		100
105	16.6	13.9		17	13.9		17.2	13.9		17.1	13.7		17	13.7		17	13.6		17	13.6		105
110	15.8	13.2		16.2	13.3		16.5	13.3		16.5	13.2		16.4	13.1		16.3	13.1		16.3	13		110
115	14.9	12.6	10.6	15.5	12.8		15.8	12.8		15.8	12.7		15.8	12.6		15.7	12.6		15.7	12.6		115
120	14.1	12.1	10.2	14.8	12.2	10	15.2	12.3		15.2	12.2		15.2	12.2		15.1	12.1		15.1	12.1		120
125	13.5	11.5	9.7	14	11.7	9.6	14.5	11.7	9.6	14.6	11.7	9.4	14.5	11.7	9.4	14.5	11.6		14.5	11.6		125
130	12.9	11	9.3	13.4	11.2	9.2	13.8	11.2	9.2	14	11.2	9.1	13.9	11.2	9	14	11.2	8.9	14	11.1	8.9	130
135	12.4	10.5	8.8	12.9	10.7	8.8	13.2	10.8	8.8	13.4	10.8	8.7	13.3	10.7	8.6	13.4	10.7	8.6	13.4	10.7	8.5	135
140	11.8	10	8.3	12.3	10.2	8.4	12.7	10.4	8.4	12.7	10.4	8.3	12.7	10.3	8.2	12.8	10.3	8.2	12.8	10.3	8.2	140
145	11.2	9.5	7.8	11.8	9.8	7.9	12.2	9.9	8	12.3	10	7.9	12.2	10	7.9	12.2	9.9	7.8	12.2	9.9	7.8	145
150	10.6	9.1	7.4	11.2	9.3	7.5	11.7	9.5	7.6	11.8	9.6	7.6	11.8	9.5	7.5	11.8	9.5	7.5	11.8	9.5	7.5	150
155	10	8.7	7	10.7	9	7.1	11.3	9.1	7.2	11.4	9.2	7.2	11.4	9.2	7.2	11.4	9.1	7.1	11.4	9.2	7.1	155
160	9.4	8.3	6.6	10.3	8.6	6.8	10.8	8.7	6.9	11	8.8	6.8	10.9	8.8	6.8	11	8.8	6.8	11	8.8	6.8	160
165	9	7.9	6.2	9.8	8.2	6.4	10.3	8.4	6.5	10.5	8.5	6.5	10.5	8.4	6.5	10.5	8.4	6.5	10.6	8.4	6.4	165
170	8.5	7.5	5.8	9.3	7.9	6	9.9	8	6.2	10.1	8.1	6.2	10.1	8.1	6.1	10.1	8.1	6.2	10.2	8.1	6.2	170
175	8.1	7.1	5.5	8.8	7.5	5.6	9.4	7.7	5.8	9.7	7.8	5.8	9.7	7.8	5.8	9.7	7.8	5.8	9.8	7.8	5.9	175
180	7.7	6.6	5.1	8.4	7.1	5.3	8.9	7.4	5.5	9.2	7.5	5.5	9.3	7.5	5.5	9.3	7.5	5.5	9.4	7.5	5.5	180
185	7.4	6.2	4.8	8	6.7	5	8.5	7	5.2	8.8	7.2	5.2	8.8	7.2	5.2	8.9	7.2	5.2	9	7.2	5.2	185
190	6.9	5.9	4.4	7.7	6.3	4.7	8.1	6.7	4.9	8.4	6.9	4.9	8.4	6.9	4.9	8.5	6.9	5	8.6	6.9	5	190
195	6.5	5.5	4.1	7.4	5.9	4.4	7.8	6.3	4.6	8	6.6	4.7	8	6.5	4.7	8.1	6.6	4.7	8.2	6.6	4.7	195
200	6	5.1	3.8	7	5.6	4.1	7.5	5.9	4.3	7.7	6.2	4.4	7.7	6.2	4.4	7.7	6.2	4.4	7.8	6.3	4.5	200
205	5.5	4.8		6.7	5.3	3.8	7.2	5.6	4	7.4	5.8	4.1	7.4	5.8	4.1	7.4	5.9	4.2	7.4	5.9	4.2	205
210	5.1	4.4		6.3	4.9		6.8	5.3		7.1	5.5	3.9	7.1	5.5	3.9	7.1	5.5	3.9	7.2	5.6	3.9	210
215	4.8	4		5.9	4.6		6.5	5		6.8	5.2		6.8	5.2		6.9	5.2		6.9	5.3		215
220	4.4			5.5	4.2		6.2	4.7		6.5	4.9		6.5	4.9		6.6	4.9		6.6	5		220
225	4.1			5.1	3.9		5.9	4.3		6.2	4.6		6.2	4.6		6.3	4.7		6.3	4.7		225
230	3.8			4.8			5.5	4		5.9	4.3		5.9	4.4		6	4.4		6.1	4.5		230
235				4.5			5.1			5.6	4.1		5.6	4.1		5.7	4.1		5.8	4.2		235
240				4.2			4.8			5.3	3.8		5.3	3.8		5.4	3.9		5.5	3.9		240
245				3.9			4.5			4.9			5			5.1			5.2			245
250							4.2			4.6			4.7			4.8			4.8			250
255							4			4.3			4.4			4.4			4.5			255
260										4.1			4.1			4.2			4.2			260
265										3.8			3.9			3.9			4			265

t_198_011_03601_00_000



Lifting capacities Forces de levage

TYNZFH 20 ft

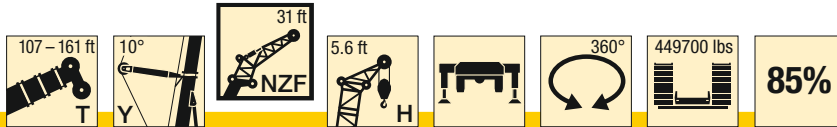


ft	107 ft + 25 ft*				125 ft + 25 ft*				143 ft + 25 ft*				161 ft + 25 ft*				ft
	20 ft				20 ft				20 ft				20 ft				
	0°	10°	20°	38°	0°	10°	20°	38°	0°	10°	20°	38°	0°	10°	20°	38°	
19	122.9																19
20	122.9																20
22	122.9				122.9												22
24	122.9	122.9			122.9				122.9								24
26	122.9	122.9			122.9	122.9			122.9				122.9				26
28	122.9	122.9	118.9		122.9	122.9			122.9	122.9			122.9				28
30	122.9	122.9	117.6		122.9	122.9	118.3		122.9	122.9			122.9	122.9			30
32	122.9	122.9	116.3		122.9	122.9	117.3		122.9	122.9	117.3		122.9	122.9			32
34	122.9	122.9	115.1	98.8	122.9	122.9	116.3		122.9	122.9	116.4		122.9	122.9	116.1		34
36	122.9	122.9	113.9	97.9	122.9	122.9	115.3	98.7	122.9	122.9	115.6		122.9	122.9	115.4		36
38	122.9	122.8	112.8	97.2	122.9	122.9	114.2	98	122.9	122.6	114.7	98.4	122.9	122.8	114.8		38
40	122.9	122.3	111.6	96.4	122.9	122.9	113.1	97.3	122.9	122.4	113.8	98	122.9	122.4	114.2	98	40
45	121.9	119.7	109	94.7	122.9	121.8	110.6	95.8	122.9	121.8	111.5	96.6	122.9	121.3	112.2	97.2	45
50	119.5	117.2	106.5	92.9	122	119.4	108.4	94.2	122.9	120.3	109.4	95.2	122.9	120.1	110.1	96.1	50
55	115.9	114.4	104.5	91.2	120.1	117	106.2	92.7	122	118.2	107.5	93.9	122.7	118.4	108.3	94.8	55
60	112.6	111.5	102.6	89.8	116.9	114.5	104.4	91.2	120.5	116	105.6	92.5	122	116.4	106.6	93.6	60
65	109.4	108.6	100.5	88.6	113.8	111.9	102.7	89.9	117.6	113.8	104	91.1	120.9	114.4	104.9	92.3	65
70	106.2	106	98.1	87.5	111	109.4	101.1	88.9	114.7	111.6	102.5	90	118.3	112.5	103.5	91.1	70
75	103	104	96	86.8	108.2	106.9	99.2	87.9	112.2	109.4	101	89.1	115.6	110.8	102.2	90.1	75
80	100.3	101.9	94	86.2	105.3	104.8	97.2	87.1	109.7	107.2	99.7	88.2	113.2	109	100.8	89.3	80
85	97.7	99.2	92.1	85.5	102.6	103.1	95.4	86.6	107.2	105	98.2	87.4	111	107.3	99.6	88.4	85
90	95.5	96.7	90.2	85.3	100.2	101.2	93.7	86	104.6	103.5	96.5	86.9	108.7	105.5	98.5	87.7	90
95	93.3	94.5	88.8	85.3	97.9	99.2	92	85.4	102.3	102	95	86.4	106.4	104	97.4	87.1	95
100	91.2	92.3	87.5		95.9	97	90.3	85.3	100.1	100.5	93.4	85.9	104	102.6	96	86.7	100
105	89.4	90.1	86.6		94	95	89	85.3	98	99	91.9	85.4	102	101.3	94.6	86.2	105
110	87.8	88.5	85.8		92.1	93.1	87.9	85.3	96.2	97.2	90.4	85.3	100	99.9	93.2	85.8	110
115	86.8	87.1	85.3		90.3	91.1	87		94.5	95.5	89.3	85.3	98.2	98.5	91.8	85.3	115
120	85.8	86.1	85.3		88.9	89.5	86.3		92.8	93.7	88.2	85.3	96.5	97.4	90.5	85.3	120
125	85.3	85.3			87.6	88	85.5		91.1	92	87.3		95	95.8	89.4	85.3	125
130	85.3	85.3			86.7	87	85.3		89.7	90.3	86.6		93.4	94.3	88.5	85.3	130
135	69.7				85.8	86.1	85.3		88.5	89	86		91.9	92.7	87.6		135
140					85.3	85.3			87.4	87.8	85.4		88.8	89.7	86.9		140
145					84.5	84.6			85	85.4	84.8		84.1	84.8	84.9		145
150					70.6				80.3	80.8	81.1		79.5	80.1	80.5		150
155									75.9	76.3			75.1	75.7	76.1		155
160									71.8	72.1			71.1	71.6	71.9		160
165									64.1				67.2	67.7	67.9		165
170									46.6				63.6	64			170
175													60.2	60.5			175
180													55.9	56.5			180
185													44				185

t_198_111_02001_00_000

Lifting capacities Forces de levage

TYNZFH 31 ft

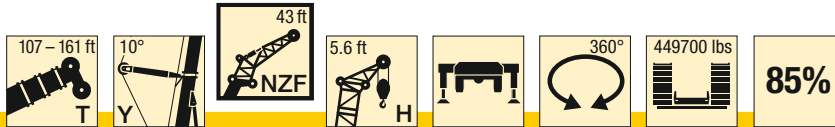


ft	107 ft + 25 ft*				125 ft + 25 ft*				143 ft + 25 ft*				161 ft + 25 ft*				ft
	31 ft				31 ft				31 ft				31 ft				
	0°	10°	20°	38°	0°	10°	20°	38°	0°	10°	20°	38°	0°	10°	20°	38°	
22	122.9																22
24	122.9				122.9												24
26	122.9				122.9				122.9								26
28	122.9	122.9			122.9				122.9				122.9				28
30	122.9	122.9			122.9	122.9			122.9				122.9				30
32	122.9	122.9			122.9	122.9			122.9	122.9			122.9				32
34	122.9	122.9	116.2		122.9	122.9			122.9	122.9			122.9	122.9			34
36	122.9	122.7	115		122.9	122.9	115.9		122.9	122.9			122.9	122.9			36
38	122.9	122.5	113.8		122.9	122.8	114.8		122.9	122.9	115		122.9	122.8			38
40	122.9	122.3	112.7		122.9	122.3	113.7		122.9	122.9	114.1		122.9	122.8	113.6		40
45	122.7	121.1	110	83	122.9	121.3	111.3	83.4	122.9	121.3	111.7		122.9	121.6	111.9		45
50	121.5	118.1	107.3	81	122.6	119.7	108.9	81.6	122.9	119.7	109.7	81.8	122.9	119.5	109.9	81.8	50
55	118.7	115.1	104.6	79.3	121.6	117.2	106.3	80	122.5	117.9	107.5	80.3	122.6	117.5	107.8	80.4	55
60	115.3	112.4	101.8	77.8	119.3	114.7	103.6	78.5	121.7	115.8	104.9	79	121.7	115.6	105.6	79	60
65	112.3	109.8	98.9	76.3	116.3	112.4	101	77.2	119.8	113.8	102.3	77.7	120.7	113.9	103.1	77.8	65
70	109.4	107.2	95.9	75.1	113.5	110.1	98.5	75.9	117.1	111.7	99.8	76.5	119.7	112.1	100.6	76.7	70
75	106.4	104.6	93	73.9	110.9	107.8	96	74.9	114.4	109.8	97.6	75.4	117.7	110.4	98.4	75.8	75
80	103.4	101.5	90.1	73	108.3	105.6	93.5	73.9	112.1	107.8	95.5	74.4	115.2	108.5	96.5	74.8	80
85	100.9	98.2	87.2	72.1	105.6	103	90.9	72.9	109.7	105.8	93.3	73.5	113	106.7	94.6	73.9	85
90	98.4	95	84.4	71.3	103	100	88.3	72.2	107.3	103.8	91	72.7	110.9	104.9	92.6	73.2	90
95	96.3	91.7	81.8	70.4	100.8	97	85.7	71.5	104.9	101.3	88.6	72	108.7	103	90.7	72.4	95
100	94.3	88.4	79.1	69.6	98.5	94	83.3	70.7	102.7	98.4	86.3	71.3	106.5	101.1	88.6	71.7	100
105	92.4	85	76.6	68.6	96.6	91	81	69.9	100.6	95.5	83.9	70.7	104.3	98.6	86.6	71.1	105
110	90.5	81.7	74.7	67.8	94.9	88.1	78.8	69.1	98.6	92.5	81.9	70	102.4	96	84.5	70.5	110
115	87.2	78.9	72.8		93.1	85.2	76.6	68.3	96.9	89.7	80	69.3	100.5	93.4	82.4	70	115
120	83.4	76.4	71		91.3	82.3	74.8	67.6	95.3	87.2	78.1	68.7	98.7	90.9	80.7	69.4	120
125	80.1	73.9	69.6		89	79.5	73.2		93.7	84.7	76.2	68	97.1	88.4	79	68.8	125
130	76.8	71.7	68.2		85.2	77.3	71.5		92	82.2	74.5	67.4	95.6	86.1	77.3	68.2	130
135	73.6	69.8			82	75.2	70.1		89.6	79.7	73.1		94.2	84	75.6	67.6	135
140	71	68.1			79.2	73	68.9		86.4	77.6	71.6		90.1	81.8	74.1	67.1	140
145	68.3				76.4	71.2	67.8		83.2	75.7	70.3		85.3	79.7	72.8	66.6	145
150					73.6	69.6			80	73.9	69.1		80.8	77.6	71.6		150
155					71.3	68			77.3	72.1	68.2		76.4	75.8	70.3		155
160					66.8				73.5	70.5	67.3		72.4	73.4	69.2		160
165									69.7	69			68.7	69.5	68.3		165
170									66	66.6			65.1	65.8	66.4		170
175									60.3	62.5			61.7	62.3	62.8		175
180									46.3				58.4	59			180
185													55.3	55.9			185
190													51.7	52.6			190
195													42.2				195

t_198_111_02101_00_000

Lifting capacities Forces de levage

TYNZFH 43 ft

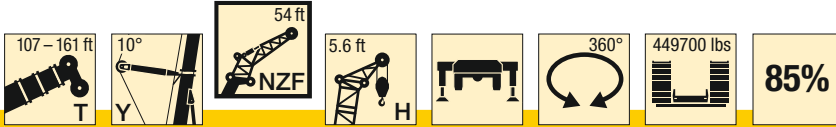


ft	107 ft + 25 ft*				125 ft + 25 ft*				143 ft + 25 ft*				161 ft + 25 ft*				ft
	43 ft				43 ft				43 ft				43 ft				
	0°	10°	20°	38°	0°	10°	20°	38°	0°	10°	20°	38°	0°	10°	20°	38°	
22	122.9																22
24	122.9				122.9												24
26	122.9				122.9												26
28	122.9				122.9				122.9				122.9				28
30	122.9				122.9				122.9				122.9				30
32	122.9	120.2			122.9				122.9				122.9				32
34	122.9	117.7			122.9	119.1			122.9				122.9				34
36	122.9	115.3			122.9	117			122.9	117.4			122.9				36
38	122.9	112.9	94.3		122.9	114.8			122.9	115.4			122.9	115.1			38
40	122.9	110.8	93		122.9	112.7	93.6		122.9	113.5			122.9	113.5			40
45	121.6	105.6	89.5		122.9	107.9	90.7		122.9	108.9	91.6		122.4	109.3	91.9		45
50	117.4	100.7	86.4	64.1	122.1	103.3	87.9		122.9	104.9	89		121.9	105.6	89.4		50
55	113.2	96.6	83.5	62.4	117.6	99.2	85.2	62.8	121.2	100.9	86.5	62.9	121.4	102	87		55
60	109	92.5	80.8	60.9	112.9	95.6	82.7	61.4	116.8	97.3	84.1	61.6	118.8	98.4	84.7	61.6	60
65	104.5	88.9	78.3	59.5	108.8	92	80.4	60.1	112.4	94.2	81.9	60.4	114.7	95.4	82.5	60.5	65
70	100	86	76.1	58.3	104.8	88.8	78.2	58.9	108	91	79.8	59.3	110.7	92.6	80.6	59.4	70
75	95.6	83	74	57.1	100.8	86.1	76.2	57.8	104	88	77.7	58.2	106.6	89.8	78.7	58.4	75
80	91.1	80	71.9	56	96.9	83.5	74.4	56.8	100.5	85.5	76	57.3	102.8	87.1	76.9	57.5	80
85	87.3	77.4	70.2	55	92.9	80.8	72.5	55.8	97	83.2	74.3	56.3	99.7	84.9	75.3	56.7	85
90	84.2	75.2	68.6	54.2	89.1	78.1	70.8	55	93.6	80.9	72.6	55.5	96.6	82.8	73.8	55.9	90
95	81.3	73.1	67	53.4	85.8	76.2	69.4	54.2	90.2	78.5	71.1	54.7	93.6	80.7	72.4	55.1	95
100	78.3	70.9	65.6	52.8	83.2	74.2	67.9	53.6	86.9	76.4	69.6	54	90.6	78.7	70.9	54.5	100
105	75.4	69.1	64.2	52.3	80.6	72.3	66.5	52.9	84.1	74.7	68.3	53.4	87.6	76.6	69.6	53.8	105
110	73.1	67.5	62.9	51.8	77.9	70.4	65.3	52.4	81.9	73	67	52.9	84.8	74.9	68.4	53.2	110
115	71.1	66	61.7	51.5	75.3	68.8	64.1	52	79.6	71.4	65.7	52.4	82.5	73.4	67.2	52.7	115
120	69	64.5	60.8	51.4	73.2	67.5	63	51.6	77.3	69.7	64.7	51.9	80.5	71.9	66	52.2	120
125	67	63.3	59.9		71.4	66.1	61.9	51.3	75.1	68.3	63.7	51.5	78.5	70.4	64.8	51.8	125
130	65.3	62.3	59.1		69.6	64.8	61	51.2	73	67.1	62.7	51.2	76.5	69	63.9	51.4	130
135	63.9	61.3	58.6		67.8	63.5	60.2		71.4	65.9	61.7	51	74.5	67.7	63	51.2	135
140	62.6	60.5	58.2		66	62.6	59.5		69.8	64.7	60.8	50.9	72.6	66.6	62.1	50.9	140
145	61.2	60.1			64.7	61.7	58.8		68.2	63.5	60.1	50.9	71	65.6	61.2	50.7	145
150	60.5	59.7			63.4	60.9	58.6		66.6	62.6	59.5		69.6	64.6	60.4	50.6	150
155	59.8				62.2	60.2	58.3		65.1	61.9	58.8		68.2	63.5	59.8	50.6	155
160					61	59.9			63.9	61.2	58.4		66.8	62.6	59.2		160
165					60.3	59.5			62.9	60.4	58.2		65.5	61.9	58.6		165
170					59.7				61.9	59.9	57.9		64.2	61.2	58.1		170
175					46.8				60.8	59.6	57.9		62.5	60.5	57.8		175
180									59.9	59.3			59.7	59.9	57.6		180
185									56.5	58.1			56.6	57.5	57.2		185
190									45				53.7	54.5	55		190
195													51	51.6			195
200													47.8	48.9			200
205													40				205
210													28.1				210

t_198_111_02201_00_000

Lifting capacities Forces de levage

TYNZFH 54 ft

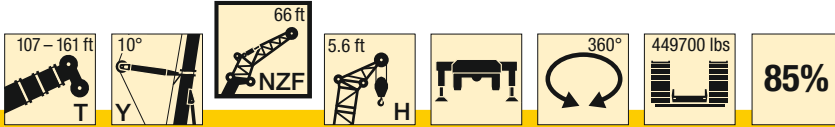


ft	107 ft + 25 ft*				125 ft + 25 ft*				143 ft + 25 ft*				161 ft + 25 ft*				ft
	54 ft				54 ft				54 ft				54 ft				
	0°	10°	20°	38°	0°	10°	20°	38°	0°	10°	20°	38°	0°	10°	20°	38°	
24	122.9																24
26	122.9				122.9												26
28	122.9				122.9												28
30	122.9				122.9				122.4				122.6				30
32	122.9				122.9				121.9				121.6				32
34	121.7	100.6			122.9				121.3				120.5				34
36	119.6	98.7			122.6	99.3			120.8				119.4				36
38	117.5	96.6			121	97.7			120.2				118.2				38
40	115.4	94.4			118.6	95.8			119.2	95.5			117.1				40
45	110.2	89.7	75.3		112.7	91.3			114.1	91.8			113.2	91.2			45
50	104.7	85.2	71.7		107.1	87.4	72.8		108.7	88.2	73.3		108.6	88	72.8		50
55	99.1	81.1	68.2		102.2	83.5	69.5		103.3	84.8	70.1		103.9	84.9	70.2		55
60	93.4	77.5	64.7	48.7	97.5	79.9	66.4	49.1	99	81.3	67.3		99.3	81.9	67.6		60
65	88.2	73.9	61.8	47.1	92.8	76.6	63.4	47.6	95.2	78.1	64.4	47.8	95.8	78.9	65.2	48	65
70	84.1	70.4	58.9	45.6	88.2	73.3	60.9	46.2	91.3	75.1	61.9	46.6	92.4	76.1	62.7	46.8	70
75	80.1	67.1	56.4	44.2	84.5	70.1	58.3	45	87.4	72.1	59.7	45.4	89.1	73.3	60.6	45.6	75
80	76.1	63.8	54.2	43	80.8	67.1	56.1	43.7	83.9	69.1	57.4	44.2	85.7	70.4	58.6	44.6	80
85	72.1	60.4	51.9	41.8	77.2	64.2	54.1	42.7	80.6	66.4	55.5	43.2	82.5	67.7	56.6	43.6	85
90	68.4	57.3	49.8	40.7	73.6	61.3	52.1	41.6	77.4	63.9	53.7	42.2	79.5	65.3	54.8	42.7	90
95	65.1	55	48.1	39.7	70	58.3	50.2	40.7	74.1	61.3	52	41.3	76.7	63.1	53.3	41.9	95
100	61.9	52.7	46.4	38.8	66.7	55.9	48.5	39.8	70.9	58.7	50.2	40.5	73.8	60.9	51.7	41	100
105	58.7	50.4	44.8	38	63.9	53.9	47.1	38.9	67.7	56.2	48.7	39.7	70.9	58.7	50.1	40.2	105
110	55.5	48.2	43.4	37.2	61.1	51.8	45.6	38.2	64.8	54.3	47.3	38.9	68	56.5	48.7	39.6	110
115	52.8	46.5	42.1	36.6	58.2	49.8	44.1	37.5	62.3	52.5	46	38.3	65.3	54.6	47.3	38.8	115
120	50.6	44.9	40.8	35.9	55.4	47.9	42.9	36.8	59.9	50.7	44.7	37.6	62.8	52.9	46.2	38.2	120
125	48.5	43.2	39.5	35.4	52.9	46.3	41.8	36.3	57.4	49	43.4	37	60.7	51.4	45	37.6	125
130	46.4	41.6	38.5	34.9	50.9	44.9	40.7	35.7	55	47.3	42.4	36.5	58.6	49.8	43.8	37.1	130
135	44.2	40.3	37.6		49	43.4	39.5	35.3	52.6	45.8	41.4	36	56.5	48.2	42.7	36.5	135
140	42.5	39.1	36.6		47.1	42	38.6	34.9	50.7	44.6	40.4	35.5	54.3	46.7	41.8	36.1	140
145	41	37.9	35.9		45.2	40.7	37.8		49	43.3	39.4	35.1	52.3	45.4	40.9	35.7	145
150	39.4	36.7	35.2		43.4	39.6	36.9		47.4	42.1	38.5	34.7	50.4	44.3	40.1	35.3	150
155	37.9	35.8	34.6		42	38.5	36.2		45.7	40.8	37.8	34.4	48.9	43.2	39.2	34.9	155
160	36.6	35			40.6	37.5	35.5		44.1	39.8	37		47.5	42	38.4	34.6	160
165	35.4				39.3	36.5	34.9		42.5	38.8	36.3		46	40.9	37.7	34.3	165
170					37.9	35.7	34.5		41.3	37.9	35.7		44.5	39.9	37.1		170
175					36.7	34.9			40.1	37	35.2		43	39	36.4		175
180					35.7	34.3			38.9	36.2	34.6		41.8	38.2	35.8		180
185					34.6				37.7	35.5	34.3		40.7	37.4	35.3		185
190									36.6	34.8			39.6	36.6	34.8		190
195									35.7	34.2			38.6	35.8	34.4		195
200									34.8				37.5	35.2	34.1		200
205													36.6	34.6			205
210													35.7	34.1			210
215													34.9				215
220													28.4				220

t_198_111_02301_00_000

Lifting capacities Forces de levage

TYNZFH 66 ft

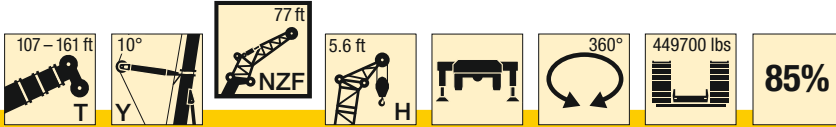


ft	107 ft + 25 ft*				125 ft + 25 ft*				143 ft + 25 ft*				161 ft + 25 ft*				ft
	66 ft				66 ft				66 ft				66 ft				
	0°	10°	20°	38°	0°	10°	20°	38°	0°	10°	20°	38°	0°	10°	20°	38°	
26	121.5																26
28	118.8				120.6												28
30	116				117.7												30
32	113.2				114.8				113.2				110.9				32
34	110.4				111.8				110.7				108.7				34
36	107.8				108.9				108.2				106.6				36
38	105.3	84.9			106				105.8				104.5				38
40	102.8	83.1			103.7	83.2			103.3				102.4				40
45	96.6	78.8			98.3	79.6			98.1	79.1			97.3	78.3			45
50	90.5	74.9	62.1		92.9	76			93.6	76			93.2	75.5			50
55	86	71.1	59.6		87.8	72.8	60.9		89	73.1	61.5		89.2	72.8			55
60	81.5	67.6	57.3		84	69.5	59		84.7	70.4	59.4		85.2	70.4	59.6		60
65	77.1	64.7	55.1		80.2	66.6	57		81.3	67.7	57.4		81.6	68.1	57.8		65
70	73.1	61.8	53.2	40.9	76.4	64	55	41.2	78	65.3	55.7		78.7	65.8	56.1		70
75	69.9	59.2	51.3	39.8	72.8	61.4	53.2	40.1	74.7	63	53.9	40.3	75.8	63.7	54.5	40.3	75
80	66.7	57	49.6	38.8	69.9	59	51.5	39.2	71.5	60.7	52.4	39.4	73	61.7	53	39.5	80
85	63.5	54.9	48.1	37.8	67.1	57	49.9	38.3	68.9	58.4	50.9	38.6	70.1	59.7	51.7	38.7	85
90	60.4	52.8	46.6	37	64.3	55.1	48.6	37.5	66.5	56.5	49.5	37.8	67.8	57.7	50.3	38	90
95	57.5	50.6	45.1	36.2	61.5	53.2	47.3	36.8	64.1	54.9	48.3	37.1	65.6	56.1	49	37.3	95
100	55.2	49	43.9	35.5	58.8	51.4	45.9	36	61.8	53.2	47.1	36.4	63.6	54.6	47.9	36.7	100
105	53.2	47.5	42.8	34.8	56.3	49.6	44.7	35.3	59.4	51.5	45.9	35.7	61.6	53.1	46.8	36	105
110	51.2	46	41.7	34.1	54.4	48.2	43.6	34.7	57.1	49.8	44.8	35.1	59.6	51.5	45.8	35.4	110
115	49.1	44.5	40.6	33.6	52.6	46.8	42.6	34.1	55	48.4	43.7	34.6	57.5	50	44.7	34.9	115
120	47.3	43.2	39.7	33.1	50.8	45.5	41.6	33.6	53.4	47.2	42.8	34	55.6	48.5	43.7	34.4	120
125	45.7	42.1	38.9	32.6	49	44.1	40.7	33.2	51.8	46	42	33.6	53.9	47.4	42.9	33.9	125
130	44.3	41	38	32.2	47.3	42.9	39.9	32.7	50.2	44.8	41.1	33.2	52.4	46.3	42.1	33.5	130
135	42.9	39.9	37.2	31.9	45.7	41.9	39.1	32.4	48.6	43.6	40.2	32.8	51	45.3	41.3	33.1	135
140	41.5	38.8	36.6	31.7	44.5	40.9	38.4	32	46.9	42.5	39.5	32.4	49.5	44.2	40.5	32.7	140
145	40.1	38	36		43.2	40	37.7	31.7	45.5	41.6	38.8	32.1	48.1	43.1	39.8	32.3	145
150	39.1	37.2	35.5		42	39	37.1	31.6	44.4	40.7	38.2	31.8	46.6	42.1	39.1	32	150
155	38.1	36.5	35.1		40.8	38.2	36.6	31.4	43.3	39.9	37.5	31.5	45.3	41.3	38.5	31.8	155
160	37.1	35.8	34.8		39.6	37.5	36.1		42.1	39	37	31.4	44.2	40.5	38	31.6	160
165	36.2	35.3	34.4		38.7	36.8	35.6		41.1	38.2	36.5	31.2	43.2	39.8	37.4	31.3	165
170	35.5	34.8			37.8	36.1	35.2		40	37.5	36		42.2	39	36.9	31.2	170
175	34.9	34.3			36.9	35.5	34.9		39	37	35.6		41.2	38.3	36.4	31.1	175
180	34.3				36.1	35.1	34.5		38.2	36.4	35.2		40.2	37.6	36		180
185					35.4	34.7			37.4	35.8	34.9		39.3	37	35.6		185
190					34.9	34.3			36.6	35.3	34.7		38.4	36.5	35.2		190
195					34.3				35.9	34.9	34.4		37.7	36	34.9		195
200									35.3	34.6			37.1	35.5	34.7		200
205									34.8	34.2			36.4	35	34.4		205
210									34.4				35.7	34.7	34.1		210
215									29.9				35.1	34.4			215
220													34.7	34.1			220
225													34.3	33.7			225
230													27.6				230

t_198_111_02401_00_000

Lifting capacities Forces de levage

TYNZFH 77 ft

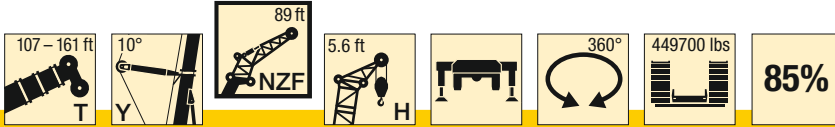


ft	107 ft + 25 ft*				125 ft + 25 ft*				143 ft + 25 ft*				161 ft + 25 ft*				ft
	77 ft				77 ft				77 ft				77 ft				
	0°	10°	20°	38°	0°	10°	20°	38°	0°	10°	20°	38°	0°	10°	20°	38°	
28	106																28
30	103.2				103.1												30
32	100.4				100.6				98.4								32
34	97.7				98.1				96.7								34
36	94.9				95.7				94.6				94.7				36
38	92.3				93.2				92.6				91.1				38
40	90.2				90.8				90.5				89.3				40
45	85.1	69.4			86.1	69.4			85.5				84.7				45
50	79.9	66			81.5	66.3			81.6	66			81	65.3			50
55	75.4	62.8	52.9		77	63.5			77.8	63.4			77.6	63			55
60	71.8	59.8	50.8		73.2	60.9	51.4		73.9	61	51.7		74.3	60.7			60
65	68.2	57	48.8		70	58.4	49.5		70.6	58.8	49.9		70.9	58.8	50		65
70	64.6	54.5	47		66.9	56.1	47.8		67.8	56.6	48.2		68.2	56.8	48.4		70
75	61.5	52	45.2	34.5	63.7	53.9	46.1		65.1	54.6	46.7		65.7	54.8	47		75
80	58.7	49.7	43.7	33.6	60.8	51.7	44.6	33.8	62.3	52.7	45.2	33.8	63.3	53.2	45.7		80
85	56.1	47.8	42.1	32.6	58.4	49.6	43.2	33	59.7	50.9	43.9	33.1	60.8	51.6	44.3	33.1	85
90	53.5	46.1	40.8	31.8	56.2	47.9	41.8	32.2	57.5	49	42.6	32.3	58.4	50	43.2	32.4	90
95	50.8	44.3	39.5	31	53.9	46.3	40.6	31.4	55.5	47.4	41.3	31.6	56.5	48.4	42	31.7	95
100	48.4	42.6	38.3	30.3	51.6	44.7	39.5	30.7	53.6	46	40.2	31	54.8	47	40.9	31.1	100
105	46.4	41	37.1	29.6	49.3	43.1	38.4	30.1	51.7	44.6	39.2	30.4	53.1	45.7	39.9	30.6	105
110	44.7	39.7	36.1	29	47.3	41.5	37.3	29.5	49.8	43.2	38.2	29.8	51.5	44.4	39	30	110
115	43	38.5	35.1	28.4	45.6	40.2	36.3	28.9	47.9	41.7	37.2	29.3	49.8	43.2	38.1	29.5	115
120	41.3	37.2	34.2	27.9	44.1	39.1	35.4	28.4	46	40.4	36.3	28.7	48.2	41.9	37.2	29	120
125	39.6	36	33.3	27.4	42.6	38	34.6	27.9	44.7	39.3	35.5	28.3	46.6	40.6	36.3	28.6	125
130	38.1	35	32.6	27	41.1	36.8	33.7	27.5	43.3	38.3	34.7	27.8	45	39.5	35.5	28.1	130
135	37	34.1	31.9	26.6	39.5	35.7	33	27.1	42	37.3	33.9	27.4	43.8	38.5	34.8	27.7	135
140	35.8	33.2	31.1	26.3	38.2	34.8	32.3	26.7	40.6	36.3	33.2	27	42.6	37.6	34.1	27.3	140
145	34.7	32.3	30.5	26	37	34	31.7	26.4	39.3	35.3	32.5	26.7	41.4	36.7	33.5	27	145
150	33.5	31.4	29.9	25.7	36	33.1	31	26.1	38	34.4	31.9	26.4	40.1	35.8	32.8	26.7	150
155	32.5	30.7	29.4	25.6	35	32.3	30.4	25.8	36.9	33.7	31.4	26.1	38.9	34.9	32.2	26.4	155
160	31.6	30	28.9		33.9	31.5	29.9	25.6	36	33	30.8	25.9	37.7	34.1	31.7	26.1	160
165	30.8	29.4	28.5		32.9	30.8	29.5	25.5	35	32.3	30.3	25.6	36.6	33.4	31.2	25.9	165
170	30	28.7	28.2		32	30.2	29		34.1	31.6	29.8	25.5	35.8	32.8	30.6	25.6	170
175	29.1	28.3	27.9		31.2	29.7	28.6		33.2	30.9	29.4	25.4	35	32.1	30.1	25.4	175
180	28.5	27.9			30.5	29.1	28.3		32.3	30.3	29		34.1	31.5	29.7	25.3	180
185	28	27.7			29.8	28.6	28		31.5	29.8	28.6		33.3	30.9	29.3	25.2	185
190	27.6				29	28.2	27.8		30.8	29.3	28.2		32.5	30.3	29	25.1	190
195					28.5	27.9			30.2	28.8	28		31.7	29.8	28.7		195
200					28	27.6			29.6	28.4	27.9		31	29.4	28.3		200
205					27.6				28.9	28	27.7		30.4	29	28.1		205
210									28.4	27.7			29.9	28.5	27.9		210
215									28	27.4			29.3	28.1	27.7		215
220									27.6	27.4			28.7	27.9	27.6		220
225									27.3				28.2	27.6			225
230													27.9	27.4			230
235													27.6	27.3			235
240													26.3				240

t_198_111_02501_00_000

Lifting capacities Forces de levage

TYNZFH 89 ft

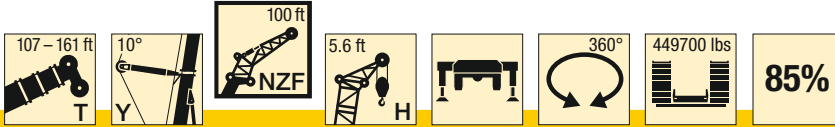


ft	107 ft + 25 ft*				125 ft + 25 ft*				143 ft + 25 ft*				161 ft + 25 ft*				ft
	89 ft				89 ft				89 ft				89 ft				
	0°	10°	20°	38°	0°	10°	20°	38°	0°	10°	20°	38°	0°	10°	20°	38°	
30	91.8																30
32	89.4				90.1												32
34	87.1				88				86.3								34
36	84.7				85.9				84.6								36
38	82.3				83.8				82.8				82.8				38
40	80.1				81.7				81				79.7				40
45	75.6	62.1			77				76.5				75.7				45
50	71.2	59.4			73.1	59.4			72.7	58.8			72				50
55	66.8	56.5			69.1	56.8			69.4	56.6			69	56			55
60	63.5	54			65.3	54.5			66	54.3			66.1	54			60
65	60.5	51.6	43.3		62.3	52.3	43.7		62.8	52.3			63.1	52			65
70	57.4	49.2	41.5		59.6	50.2	42.1		60.2	50.5	42.3		60.4	50.4	42.4		70
75	54.4	47.1	39.9		56.9	48.2	40.6		57.8	48.6	40.9		58.2	48.7	41		75
80	51.9	45	38.4		54.2	46.4	39.1		55.4	46.9	39.5		56	47	39.8		80
85	49.7	43	37	29.3	51.9	44.5	37.8	29.4	53.1	45.3	38.2		53.9	45.6	38.6		85
90	47.5	41.3	35.7	28.4	49.9	42.7	36.6	28.7	50.9	43.8	37	28.7	51.8	44.3	37.5	28.7	90
95	45.3	39.8	34.4	27.7	48	41.2	35.4	28	49.1	42.2	35.9	28	49.8	42.9	36.4	28.1	95
100	43.2	38.2	33.4	26.9	46.1	39.8	34.3	27.3	47.4	40.8	34.9	27.4	48.2	41.6	35.4	27.5	100
105	41.1	36.7	32.3	26.2	44.3	38.5	33.3	26.6	45.8	39.6	33.8	26.8	46.7	40.3	34.4	26.9	105
110	39.3	35.2	31.3	25.6	42.4	37.1	32.3	26	44.2	38.3	33	26.2	45.3	39.2	33.5	26.4	110
115	37.9	34	30.3	25	40.6	35.7	31.4	25.4	42.6	37.1	32.1	25.7	43.9	38.1	32.7	25.9	115
120	36.4	32.9	29.5	24.4	39.1	34.5	30.5	24.9	41	35.9	31.3	25.2	42.5	37	31.9	25.4	120
125	35	31.9	28.7	23.9	37.8	33.4	29.7	24.4	39.5	34.7	30.5	24.7	41.1	35.9	31.2	24.9	125
130	33.6	30.8	27.8	23.4	36.5	32.5	28.9	23.9	38.2	33.7	29.7	24.2	39.8	34.8	30.4	24.5	130
135	32.2	29.8	27.1	23	35.2	31.5	28.2	23.5	37	32.8	29	23.8	38.4	33.8	29.6	24.1	135
140	31.1	28.9	26.5	22.6	33.9	30.5	27.5	23.1	35.9	31.9	28.4	23.4	37.4	32.9	29	23.7	140
145	30.2	28.1	25.8	22.2	32.6	29.6	26.8	22.7	34.7	31	27.7	23	36.3	32.1	28.4	23.3	145
150	29.2	27.3	25.2	21.9	31.5	28.8	26.3	22.3	33.6	30.1	27.1	22.7	35.3	31.3	27.8	23	150
155	28.2	26.6	24.7	21.6	30.6	28.1	25.7	22	32.4	29.3	26.5	22.4	34.2	30.5	27.3	22.7	155
160	27.2	25.8	24.2	21.4	29.7	27.4	25.2	21.7	31.3	28.5	26	22.1	33.2	29.7	26.7	22.4	160
165	26.3	25.2	23.8	21.2	28.8	26.7	24.7	21.5	30.5	27.9	25.5	21.8	32.1	29	26.2	22.1	165
170	25.6	24.7	23.3		27.9	26	24.2	21.3	29.7	27.3	25	21.6	31.1	28.3	25.8	21.8	170
175	24.9	24.1	23		27	25.4	23.8	21.1	28.9	26.6	24.6	21.4	30.3	27.7	25.3	21.6	175
180	24.3	23.6	22.7		26.3	24.8	23.4		28.1	26	24.2	21.2	29.6	27.2	24.9	21.4	180
185	23.6	23.1	22.5		25.6	24.3	23.1		27.3	25.4	23.8	21	28.9	26.6	24.4	21.2	185
190	23	22.7			25	23.8	22.8		26.5	24.9	23.4	20.9	28.2	26	24.1	21	190
195	22.6	22.4			24.4	23.3	22.5		25.9	24.5	23.1		27.4	25.4	23.7	20.9	195
200	22.2				23.7	23	22.3		25.3	24	22.8		26.7	24.9	23.4	20.8	200
205					23.2	22.7			24.7	23.6	22.6		26	24.5	23.1		205
210					22.8	22.4			24.2	23.2	22.3		25.4	24.1	22.8		210
215					22.4				23.6	22.8	22.2		24.9	23.7	22.5		215
220					22.1				23.1	22.6	22.1		24.4	23.3	22.4		220
225									22.7	22.3			24	23	22.2		225
230									22.3	22.2			23.5	22.7	22		230
235									22				23	22.4	22		235
240													22.6	22.2			240
245													22.3	22.1			245
250													22				250
255													17.2				255

t_198_111_02601_00_000

Lifting capacities Forces de levage

TYNZFH 100 ft

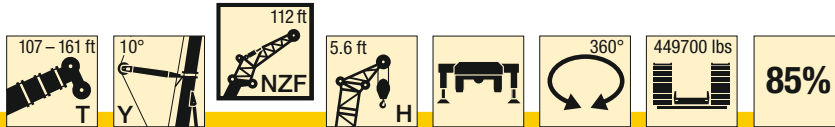


ft	107 ft + 25 ft*				125 ft + 25 ft*				143 ft + 25 ft*				161 ft + 25 ft*				ft
	100 ft				100 ft				100 ft				100 ft				
	0°	10°	20°	38°	0°	10°	20°	38°	0°	10°	20°	38°	0°	10°	20°	38°	
30	82.7																30
32	80.8				80.1												32
34	78.7				78.6												34
36	76.7				76.7				75.3								36
38	74.7				74.9				73.8				72.2				38
40	72.6				73.1				72.2				70.8				40
45	68.4				68.6				68.4				67.4				45
50	64.6	53			65.2				64.7				64				50
55	60.9	50.6			61.8	50.6			61.8	50.2			61.2				55
60	57.4	48.2			58.5	48.4			59	48.3			58.6	47.8			60
65	54.6	46.1			55.5	46.5			56.1	46.3			56.1	46			65
70	52	44.1	37.1		53.1	44.6	37.5		53.5	44.7			53.6	44.4			70
75	49.4	42.1	35.6		50.8	42.8	36.1		51.3	43	36.3		51.4	42.9	36.1		75
80	46.8	40.4	34.2		48.4	41.2	34.8		49.3	41.4	35		49.5	41.5	35.1		80
85	44.8	38.6	32.9		46.1	39.7	33.6		47.3	40	33.9		47.7	40	34		85
90	42.9	36.9	31.7		44.3	38.2	32.4		45.2	38.7	32.8		45.9	38.8	33		90
95	41.1	35.4	30.6	24.3	42.6	36.7	31.3	24.4	43.5	37.4	31.7		44.1	37.7	32		95
100	39.3	34.1	29.4	23.6	41	35.3	30.3	23.8	41.9	36.2	30.7	23.9	42.5	36.5	31	23.9	100
105	37.5	32.8	28.5	22.9	39.4	34.1	29.2	23.1	40.5	34.9	29.8	23.3	41.1	35.4	30.2	23.3	105
110	35.7	31.5	27.6	22.3	37.8	32.9	28.3	22.6	39.2	33.9	28.8	22.7	39.8	34.3	29.3	22.8	110
115	34.1	30.2	26.7	21.7	36.3	31.8	27.5	22	37.8	32.8	28	22.2	38.6	33.4	28.5	22.3	115
120	32.9	29.1	25.8	21.2	34.8	30.6	26.7	21.5	36.5	31.8	27.3	21.7	37.4	32.5	27.8	21.8	120
125	31.6	28.1	25	20.6	33.4	29.5	25.9	21	35.1	30.7	26.6	21.3	36.2	31.5	27.1	21.4	125
130	30.4	27.2	24.3	20.2	32.3	28.5	25.1	20.5	33.8	29.7	25.8	20.8	35	30.6	26.4	21	130
135	29.1	26.3	23.6	19.7	31.2	27.7	24.5	20.1	32.7	28.7	25.1	20.4	33.8	29.7	25.8	20.6	135
140	27.9	25.3	22.9	19.3	30.1	26.8	23.8	19.7	31.6	27.9	24.5	20	32.6	28.8	25.1	20.2	140
145	26.8	24.5	22.3	18.9	28.9	26	23.2	19.3	30.6	27.1	23.9	19.6	31.7	28	24.5	19.8	145
150	25.9	23.8	21.7	18.5	27.8	25.1	22.6	19	29.6	26.4	23.3	19.3	30.8	27.3	23.9	19.5	150
155	25.1	23.1	21.2	18.2	26.8	24.4	22	18.6	28.6	25.6	22.8	18.9	29.9	26.6	23.4	19.2	155
160	24.3	22.5	20.7	17.9	26	23.7	21.6	18.3	27.6	24.8	22.2	18.6	29.1	25.9	22.9	18.9	160
165	23.4	21.8	20.2	17.7	25.2	23.1	21.1	18	26.7	24.2	21.7	18.3	28.2	25.2	22.4	18.6	165
170	22.6	21.2	19.8	17.5	24.4	22.5	20.6	17.8	25.8	23.5	21.3	18.1	27.3	24.5	21.9	18.3	170
175	21.8	20.7	19.4	17.3	23.7	21.9	20.2	17.6	25.1	23	20.9	17.8	26.5	23.9	21.5	18.1	175
180	21.2	20.2	19		22.9	21.3	19.8	17.4	24.4	22.4	20.5	17.6	25.7	23.3	21.1	17.9	180
185	20.6	19.7	18.7		22.2	20.8	19.4	17.2	23.8	21.9	20	17.4	25	22.8	20.7	17.7	185
190	20	19.2	18.4		21.5	20.3	19.1		23.1	21.3	19.7	17.3	24.4	22.3	20.3	17.5	190
195	19.4	18.8	18.2		21	19.9	18.8		22.4	20.8	19.4	17.1	23.8	21.8	20	17.3	195
200	19	18.5	18		20.5	19.5	18.5		21.7	20.4	19.1	17	23.1	21.3	19.6	17.2	200
205	18.5	18.2			19.9	19.1	18.3		21.2	20	18.8		22.5	20.9	19.3	17.1	205
210	18.1				19.4	18.7	18.1		20.7	19.6	18.5		21.9	20.4	19.1	17	210
215					18.9	18.4	17.9		20.2	19.2	18.3		21.3	20.1	18.8		215
220					18.5	18.2			19.7	18.9	18.1		20.8	19.7	18.5		220
225					18.2	18			19.3	18.6	18		20.4	19.4	18.3		225
230					17.9				18.8	18.3	17.9		20	19	18.1		230
235									18.5	18.1			19.5	18.7	18		235
240									18.2	17.9			19.1	18.4	17.8		240
245									17.8				18.7	18.2	17.7		245
250													18.4	18			250
255													18.1	17.8			255
260													17.8				260
265													17.3				265

t_198_111_02701_00_000

Lifting capacities Forces de levage

TYNZFH 112 ft

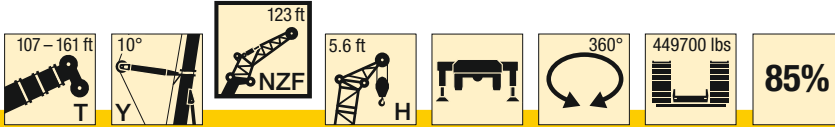


ft	107 ft + 25 ft*				125 ft + 25 ft*				143 ft + 25 ft*				161 ft + 25 ft*				ft
	112 ft				112 ft				112 ft				112 ft				
	0°	10°	20°	38°	0°	10°	20°	38°	0°	10°	20°	38°	0°	10°	20°	38°	
32	72.2																32
34	70.6				70												34
36	68.9				68.7												36
38	67.2				67.2				65.9				64				38
40	65.4				65.6				64.5				63.1				40
45	61.3				61.7				61.2				60.1				45
50	58.1				58.4				57.9				57.2				50
55	54.9	45.4			55.5	45.3			55.2				54.5				55
60	51.7	43.3			52.6	43.3			52.7	42.9			52.3	42.4			60
65	48.9	41.3			49.7	41.4			50.2	41.2			50.1	40.9			65
70	46.7	39.6			47.4	39.8			47.8	39.6			47.8	39.3			70
75	44.5	37.8	32.1		45.4	38.2	32.3		45.6	38.2			45.7	38			75
80	42.2	36.2	30.7		43.4	36.6	31.1		43.9	36.8	31.2		43.9	36.7	31.2		80
85	40.1	34.7	29.5		41.4	35.2	29.9		42.1	35.4	30.6		42.3	35.4	30.6		85
90	38.3	33.3	28.3		39.4	34	28.8		40.4	34.1	29.8		40.8	34.2	30		90
95	36.8	31.8	27.2		37.9	32.8	27.8		38.6	33	28.8		39.2	33.1	29.1		95
100	35.3	30.5	26.2	20.7	36.4	31.5	26.8		37.1	32	27.8		37.6	32.2	28.2		100
105	33.7	29.4	25.2	20.1	35.1	30.4	25.9	20.2	35.8	30.9	26.9	20.2	36.3	31.2	27.4		105
110	32.2	28.2	24.3	19.5	33.8	29.4	25	19.7	34.6	29.8	26.1	19.7	35	30.2	26.6	19.7	110
115	30.7	27.1	23.6	18.9	32.5	28.3	24.2	19.1	33.4	28.9	25.2	19.2	34	29.2	25.9	19.3	115
120	29.3	26	22.8	18.4	31.2	27.3	23.4	18.6	32.3	28	24.5	18.7	32.9	28.4	25.1	18.8	120
125	28.2	25	22	17.9	29.9	26.3	22.7	18.1	31.1	27.1	23.8	18.3	31.9	27.6	24.4	18.4	125
130	27.1	24.1	21.2	17.4	28.7	25.3	22	17.7	30	26.2	23.1	17.9	30.8	26.9	23.8	18	130
135	26	23.3	20.6	16.9	27.7	24.4	21.3	17.3	28.8	25.3	22.5	17.4	29.8	26.1	23.2	17.6	135
140	25	22.5	20	16.5	26.7	23.6	20.7	16.8	27.8	24.5	21.8	17.1	28.8	25.3	22.5	17.2	140
145	23.9	21.7	19.4	16.1	25.8	22.8	20.1	16.5	26.9	23.7	21.2	16.7	27.7	24.5	21.9	16.9	145
150	22.9	20.9	18.8	15.7	24.8	22.1	19.6	16.1	26.1	23	20.7	16.3	26.9	23.8	21.3	16.5	150
155	22.1	20.2	18.2	15.4	23.8	21.4	19	15.8	25.3	22.4	20.2	16	26.1	23.2	20.8	16.2	155
160	21.3	19.6	17.8	15.1	22.9	20.7	18.5	15.5	24.4	21.7	19.7	15.7	25.4	22.6	20.3	15.9	160
165	20.6	19	17.3	14.8	22	20	18	15.2	23.6	21.1	19.2	15.4	24.7	22	19.9	15.7	165
170	19.9	18.4	16.9	14.5	21.4	19.5	17.6	14.9	22.7	20.4	18.7	15.1	23.9	21.3	19.4	15.4	170
175	19.1	17.8	16.5	14.3	20.7	18.9	17.2	14.6	21.9	19.8	18.3	14.9	23.2	20.7	18.9	15.1	175
180	18.4	17.3	16.1	14.1	20	18.4	16.8	14.4	21.3	19.3	17.9	14.6	22.4	20.1	18.5	14.9	180
185	17.8	16.8	15.8	13.9	19.4	17.9	16.4	14.2	20.7	18.8	17.5	14.4	21.7	19.6	18.1	14.6	185
190	17.3	16.4	15.4		18.7	17.4	16	14	20.1	18.4	17.1	14.3	21.1	19.1	17.8	14.4	190
195	16.8	16	15.1		18.1	16.9	15.7	13.9	19.5	17.9	16.7	14.1	20.6	18.7	17.4	14.3	195
200	16.3	15.6	14.9		17.6	16.6	15.4	13.8	18.9	17.4	16.4	13.9	20	18.3	17.1	14.1	200
205	15.7	15.2	14.6		17.1	16.1	15.1		18.3	17	16.1	13.8	19.5	17.8	16.7	14	205
210	15.3	15	14.4		16.6	15.8	14.9		17.7	16.6	15.9	13.7	19	17.4	16.4	13.8	210
215	15	14.6			16.2	15.4	14.7		17.2	16.2	15.6		18.4	17	16.1	13.7	215
220	14.6	14.5			15.7	15.1	14.5		16.8	15.9	15.3		17.9	16.6	15.9	13.6	220
225	14.3				15.3	14.9	14.4		16.4	15.6	15.1		17.4	16.3	15.6		225
230					15	14.6			16	15.3	14.9		17	16	15.4		230
235					14.6	14.4			15.6	15	14.8		16.6	15.7	15.2		235
240					14.3				15.2	14.8	14.6		16.2	15.4	15		240
245									14.9	14.5			15.8	15.1	14.8		245
250									14.6	14.4			15.5	14.8	14.7		250
255									14.3				15.1	14.7	14.6		255
260									14.2				14.8	14.5			260
265													14.6	14.3			265
270													14.3	14.2			270
275													14.1				275

t_198_111_02801_00_000

Lifting capacities Forces de levage

TYNZFH 123 ft

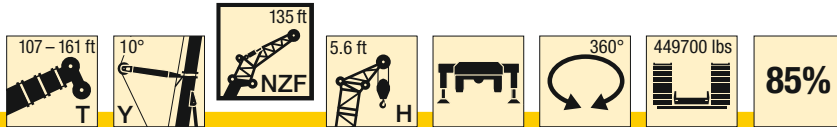


ft	107 ft + 25 ft*				125 ft + 25 ft*				143 ft + 25 ft*				161 ft + 25 ft*				ft
	123 ft				123 ft				123 ft				123 ft				
	0°	10°	20°	38°	0°	10°	20°	38°	0°	10°	20°	38°	0°	10°	20°	38°	
34	62.5																34
36	61.2				61.7												36
38	59.8				60.6												38
40	58.5				59.3				58.6								40
45	55.1				56.2				55.7				56.9				45
50	52.2				53.2				52.8				52				50
55	49.5				50.7				50.2				49.5				55
60	46.7	39			48.2	38.9			48				47.4				60
65	44.1	37.2			45.7	37.3			45.8	36.9			45.5	36.4			65
70	41.9	35.6			43.4	35.6			43.7	35.5			43.6	35.1			70
75	40	34.1			41.4	34.3			41.6	34.1			41.7	33.8			75
80	38.1	32.6	28.7		39.7	32.9	28.7		39.9	32.9			39.9	32.7			80
85	36.2	31.2	27.5		38	31.6	27.7		38.4	31.7	27.6		38.4	31.6	27.3		85
90	34.5	30	26.4		36.2	30.4	26.7		36.9	30.5	26.7		37.1	30.5	26.5		90
95	33	28.8	25.3		34.6	29.3	25.8		35.4	29.4	25.9		35.7	29.4	25.7		95
100	31.7	27.6	24.3		33.2	28.3	24.8		33.8	28.4	25		34.4	28.5	25		100
105	30.4	26.4	23.4		32	27.2	23.9		32.6	27.5	24.2		33	27.6	24.3		105
110	29.1	25.4	22.5	17.3	30.8	26.2	23.1		31.4	26.5	23.4		31.9	26.8	23.6		110
115	27.9	24.5	21.6	16.8	29.7	25.3	22.3	16.9	30.4	25.6	22.7	16.9	30.8	25.9	22.9		115
120	26.6	23.5	20.9	16.2	28.6	24.4	21.5	16.4	29.4	24.8	21.9	16.4	29.8	25.1	22.3	16.4	120
125	25.3	22.5	20.2	15.7	27.4	23.5	20.8	15.9	28.3	24.1	21.2	16	28.9	24.4	21.6	16	125
130	24.4	21.6	19.5	15.3	26.3	22.7	20.2	15.4	27.3	23.3	20.6	15.6	28	23.7	20.9	15.7	130
135	23.5	20.7	18.8	14.8	25.2	21.8	19.5	15	26.3	22.6	20	15.2	27.1	23	20.4	15.3	135
140	22.5	20	18.1	14.4	24.3	21	18.9	14.7	25.3	21.8	19.4	14.8	26.1	22.4	19.8	14.9	140
145	21.6	19.3	17.6	14	23.5	20.3	18.3	14.3	24.4	21.1	18.8	14.4	25.2	21.7	19.3	14.6	145
150	20.7	18.6	17	13.6	22.7	19.6	17.7	13.9	23.6	20.4	18.3	14.1	24.3	21	18.8	14.3	150
155	19.8	17.9	16.5	13.3	21.8	19	17.2	13.6	22.9	19.7	17.7	13.8	23.5	20.4	18.2	14	155
160	18.9	17.3	16	13	21	18.4	16.7	13.3	22.1	19.2	17.3	13.5	22.9	19.8	17.7	13.7	160
165	18.3	16.7	15.5	12.7	20.1	17.7	16.2	13	21.4	18.6	16.8	13.2	22.2	19.3	17.3	13.4	165
170	17.7	16.2	15.1	12.4	19.3	17.1	15.8	12.7	20.7	18	16.4	12.9	21.6	18.8	16.9	13.1	170
175	17	15.7	14.7	12.1	18.7	16.6	15.4	12.4	20	17.5	15.9	12.7	20.9	18.2	16.5	12.9	175
180	16.4	15.2	14.3	11.9	18.1	16.1	15	12.2	19.2	16.9	15.5	12.4	20.3	17.7	16.1	12.6	180
185	15.8	14.7	13.9	11.7	17.5	15.6	14.6	11.9	18.6	16.4	15.1	12.2	19.6	17.2	15.6	12.4	185
190	15.2	14.2	13.5	11.5	16.9	15.2	14.2	11.8	18	16	14.8	12	19	16.7	15.3	12.2	190
195	14.6	13.8	13.2	11.3	16.4	14.7	13.9	11.6	17.5	15.6	14.5	11.8	18.4	16.2	14.9	12	195
200	14.2	13.5	12.9	11.2	15.8	14.3	13.6	11.4	17	15.1	14.1	11.6	17.9	15.8	14.6	11.8	200
205	13.7	13.1	12.6		15.2	13.9	13.3	11.3	16.5	14.7	13.8	11.5	17.4	15.4	14.3	11.6	205
210	13.3	12.7	12.4		14.8	13.6	13	11.2	15.9	14.3	13.5	11.3	17	15	14	11.5	210
215	12.9	12.4	12.2		14.3	13.2	12.7		15.4	13.9	13.2	11.2	16.5	14.7	13.7	11.3	215
220	12.5	12.2	12		13.9	12.9	12.5		14.9	13.6	13	11.1	16	14.3	13.4	11.2	220
225	12.2	11.9			13.5	12.6	12.3		14.5	13.3	12.7		15.5	13.9	13.2	11.1	225
230	11.9	11.7			13.1	12.3	12.1		14.1	13	12.5		15	13.6	13	11	230
235	11.6				12.7	12.1	11.9		13.7	12.7	12.3		14.6	13.3	12.7	11	235
240					12.4	11.9			13.4	12.4	12.1		14.2	13.1	12.5		240
245					12.1	11.7			13	12.1	12		13.9	12.8	12.3		245
250					11.8				12.6	12	11.8		13.6	12.5	12.2		250
255									12.3	11.8			13.2	12.3	12		255
260									12.1	11.6			12.9	12.1	11.9		260
265									11.8	11.5			12.5	11.9	11.8		265
270									11.6				12.3	11.7			270
275													12.1	11.6			275
280													11.8	11.5			280
285													11.6				285

t_198_111_02901_00_000

Lifting capacities Forces de levage

TYNZFH 135 ft

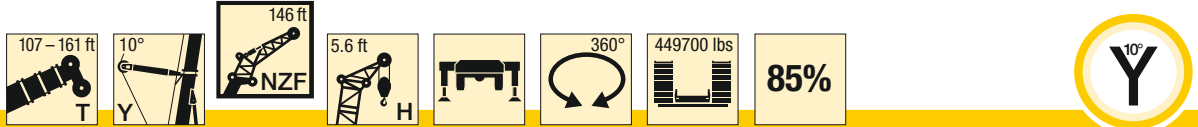


ft	107 ft + 25 ft*				125 ft + 25 ft*				143 ft + 25 ft*				161 ft + 25 ft*				ft
	135 ft				135 ft				135 ft				135 ft				
	0°	10°	20°	38°	0°	10°	20°	38°	0°	10°	20°	38°	0°	10°	20°	38°	
36	56.5																36
38	55.2				55												38
40	53.9				53.9												40
45	50.8				51				50.1				49				45
50	47.8				48.1				47.6				46.8				50
55	45.4				45.6				45.1				44.5				55
60	43.1				43.5				43.1				42.5				60
65	40.7	33.6			41.3	33.5			41.2				40.8				65
70	38.5	32			39.2	32.1			39.3	31.8			39.1	31.3			70
75	36.8	30.6			37.2	30.7			37.5	30.5			37.4	30.2			75
80	35.1	29.3			35.7	29.5			35.7	29.3			35.7	29			80
85	33.4	28.1	24.8		34.2	28.3			34.4	28.3			34.2	28			85
90	31.8	26.8	23.8		32.7	27.1	23.8		33	27.2	23.7		33.1	27.1	23.3		90
95	30.3	25.8	22.8		31.2	26.1	23		31.7	26.1	22.9		31.9	26.1	22.7		95
100	29	24.8	21.9		29.8	25.1	22.2		30.4	25.2	22.2		30.7	25.2	22		100
105	27.8	23.8	20.9		28.6	24.2	21.4		29.1	24.4	21.5		29.5	24.3	21.4		105
110	26.7	22.8	20.1		27.5	23.3	20.5		28	23.5	20.8		28.3	23.6	20.8		110
115	25.6	21.9	19.4		26.5	22.4	19.8		26.9	22.7	20.1		27.3	22.9	20.1		115
120	24.5	21.1	18.6	14.2	25.5	21.6	19.1	14.2	26	21.9	19.4		26.3	22.1	19.5		120
125	23.4	20.2	17.9	13.7	24.5	20.8	18.4	13.8	25.2	21.2	18.8	13.8	25.5	21.4	19	13.8	125
130	22.3	19.4	17.3	13.2	23.5	20.1	17.7	13.4	24.3	20.5	18.1	13.4	24.7	20.7	18.4	13.4	130
135	21.4	18.6	16.6	12.8	22.5	19.4	17.2	12.9	23.4	19.9	17.5	13	23.9	20.1	17.9	13.1	135
140	20.6	17.8	16	12.4	21.5	18.6	16.6	12.6	22.5	19.2	17	12.7	23.1	19.6	17.3	12.7	140
145	19.8	17.1	15.4	12	20.8	17.9	16.1	12.2	21.6	18.6	16.5	12.3	22.3	19	16.9	12.4	145
150	19	16.5	14.9	11.6	20.1	17.3	15.5	11.8	20.8	17.9	16	12	21.5	18.4	16.4	12.1	150
155	18.2	15.9	14.4	11.3	19.4	16.7	15	11.5	20.1	17.3	15.5	11.7	20.7	17.9	15.9	11.8	155
160	17.3	15.3	13.9	11	18.6	16.1	14.5	11.2	19.4	16.7	15	11.4	20	17.3	15.4	11.5	160
165	16.6	14.6	13.4	10.7	17.9	15.6	14.1	10.9	18.8	16.2	14.5	11.1	19.4	16.8	15	11.2	165
170	15.9	14.1	13	10.4	17.2	15	13.6	10.6	18.2	15.7	14.1	10.8	18.9	16.3	14.5	11	170
175	15.3	13.6	12.6	10.1	16.5	14.4	13.2	10.4	17.6	15.2	13.7	10.6	18.3	15.8	14.2	10.7	175
180	14.8	13.1	12.2	9.8	15.8	13.9	12.8	10.1	16.9	14.7	13.3	10.3	17.8	15.4	13.8	10.5	180
185	14.2	12.7	11.8	9.6	15.3	13.5	12.4	9.9	16.3	14.2	13	10.1	17.2	14.9	13.4	10.2	185
190	13.6	12.2	11.5	9.4	14.8	13.1	12.1	9.7	15.7	13.7	12.6	9.8	16.7	14.4	13.1	10	190
195	13.1	11.8	11.1	9.2	14.3	12.7	11.8	9.5	15.2	13.3	12.3	9.6	16.1	14	12.7	9.8	195
200	12.5	11.4	10.8	9	13.8	12.2	11.4	9.3	14.7	12.9	12	9.4	15.6	13.5	12.4	9.6	200
205	12.1	11	10.6	8.9	13.3	11.8	11.1	9.1	14.3	12.6	11.7	9.3	15.1	13.1	12.1	9.4	205
210	11.7	10.7	10.3	8.8	12.8	11.5	10.8	8.9	13.8	12.2	11.4	9.1	14.7	12.8	11.8	9.3	210
215	11.3	10.4	10		12.3	11.1	10.6	8.8	13.4	11.8	11.1	9	14.2	12.5	11.5	9.1	215
220	10.9	10.1	9.8		11.9	10.8	10.3	8.7	12.9	11.5	10.8	8.8	13.8	12.1	11.3	9	220
225	10.5	9.8	9.6		11.5	10.5	10.1		12.4	11.1	10.5	8.7	13.4	11.8	11	8.9	225
230	10.1	9.6	9.4		11.1	10.2	9.8		12	10.8	10.3	8.7	13	11.5	10.7	8.8	230
235	9.8	9.4			10.8	10	9.7		11.6	10.6	10.1	8.6	12.5	11.1	10.5	8.7	235
240	9.5	9.2			10.4	9.7	9.5		11.3	10.3	9.9		12.1	10.9	10.3	8.6	240
245	9.3				10.1	9.5	9.3		11	10.1	9.7		11.7	10.6	10.1	8.6	245
250					9.8	9.3			10.7	9.8	9.5		11.4	10.4	9.9		250
255					9.5	9.1			10.3	9.6	9.4		11.1	10.1	9.7		255
260					9.3				10	9.4	9.3		10.8	9.9	9.6		260
265					9.1				9.8	9.2	9.2		10.5	9.7	9.4		265
270									9.5	9.1			10.2	9.5	9.3		270
275									9.3	9			9.9	9.3	9.2		275
280									9.1				9.7	9.2	9.2		280
285													9.5	9			285
290													9.3	8.9			290
295													9.1				295
300													8.7				300

t_198_111_03001_00_000

Lifting capacities Forces de levage

TYNZFH 146 ft

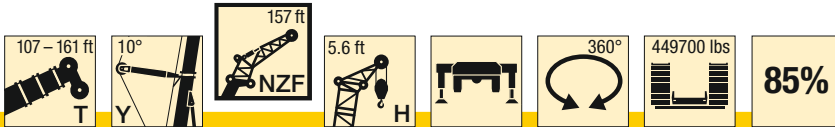


ft	107 ft + 25 ft*				125 ft + 25 ft*				143 ft + 25 ft*				161 ft + 25 ft*				ft
	146 ft				146 ft				146 ft				146 ft				
	0°	10°	20°	38°	0°	10°	20°	38°	0°	10°	20°	38°	0°	10°	20°	38°	
36	50.9																36
38	50.1																38
40	49				48.9												40
45	46.3				46.3				45.3				44.3				45
50	43.5				43.8				43.2				42.3				50
55	41.3				41.4				41				40.3				55
60	39.3				39.4				39				38.4				60
65	37.2	31.1			37.6				37.3				36.8				65
70	35.2	29.9			35.7	30			35.7	29.6			35.3				70
75	33.4	28.7			33.8	28.7			34	28.5			33.9	28.1			75
80	31.9	27.5			32.2	27.5			32.4	27.4			32.4	27.1			80
85	30.4	26.3			30.9	26.4			31	26.3			30.9	26			85
90	29	25.2	21.5		29.6	25.4			29.8	25.3			29.7	25.2			90
95	27.6	24.1	20.6		28.3	24.4	20.7		28.6	24.4	20.4		28.7	24.3			95
100	26.3	23.2	19.8		27	23.4	19.9		27.5	23.5	19.8		27.6	23.4	19.6		100
105	25.1	22.2	19		25.8	22.6	19.2		26.3	22.6	19.1		26.6	22.6	19		105
110	24.2	21.3	18.2		24.7	21.7	18.5		25.2	21.8	18.5		25.5	21.8	18.4		110
115	23.2	20.4	17.5		23.8	20.9	17.9		24.2	21.1	17.9		24.5	21.2	17.8		115
120	22.2	19.6	16.8		23	20	17.2		23.3	20.4	17.3		23.6	20.5	17.3		120
125	21.3	18.9	16.1		22.1	19.3	16.6		22.5	19.6	16.7		22.8	19.8	16.8		125
130	20.3	18.1	15.4	11.7	21.2	18.7	16	11.8	21.7	18.9	16.2		22.1	19.1	16.3		130
135	19.3	17.4	14.9	11.3	20.3	18	15.3	11.4	21	18.4	15.6	11.4	21.3	18.5	15.8	11.4	135
140	18.5	16.6	14.3	10.9	19.4	17.4	14.8	11	20.2	17.8	15.1	11.1	20.6	18	15.4	11	140
145	17.8	15.9	13.8	10.5	18.6	16.7	14.3	10.7	19.4	17.2	14.6	10.7	19.9	17.5	14.9	10.7	145
150	17.1	15.3	13.2	10.1	17.9	16.1	13.8	10.3	18.6	16.7	14.2	10.4	19.2	16.9	14.5	10.4	150
155	16.4	14.7	12.7	9.8	17.3	15.5	13.3	10	17.8	16.1	13.7	10	18.5	16.4	14	10.2	155
160	15.7	14.1	12.3	9.5	16.6	14.9	12.8	9.7	17.3	15.5	13.3	9.8	17.8	15.9	13.6	9.9	160
165	15	13.6	11.8	9.2	16	14.4	12.3	9.4	16.7	15	12.8	9.5	17.1	15.4	13.2	9.6	165
170	14.3	13	11.4	8.9	15.4	13.9	11.9	9.1	16.2	14.5	12.3	9.2	16.6	14.9	12.8	9.4	170
175	13.6	12.5	11	8.6	14.8	13.4	11.6	8.8	15.6	14	12	9	16.1	14.5	12.3	9.1	175
180	13.1	12	10.6	8.4	14.2	12.9	11.2	8.6	15.1	13.6	11.6	8.8	15.6	14	12	8.9	180
185	12.6	11.6	10.2	8.2	13.6	12.4	10.8	8.4	14.5	13.1	11.3	8.6	15.2	13.6	11.6	8.7	185
190	12.1	11.1	9.9	8	13.1	11.9	10.4	8.2	14	12.6	10.9	8.4	14.7	13.2	11.3	8.5	190
195	11.6	10.7	9.6	7.8	12.6	11.5	10.1	8	13.5	12.2	10.6	8.2	14.2	12.8	11	8.3	195
200	11.1	10.3	9.3	7.7	12.2	11.1	9.8	7.8	13	11.7	10.3	8	13.7	12.4	10.7	8.1	200
205	10.6	9.9	9	7.5	11.7	10.8	9.6	7.7	12.6	11.4	10	7.9	13.3	12	10.4	8	205
210	10.2	9.5	8.7	7.4	11.3	10.4	9.3	7.5	12.1	11	9.7	7.7	12.8	11.6	10.1	7.8	210
215	9.8	9.3	8.5	7.3	10.8	10	9	7.4	11.7	10.7	9.4	7.6	12.4	11.3	9.8	7.7	215
220	9.5	9	8.3	7.1	10.3	9.7	8.8	7.3	11.3	10.4	9.2	7.4	12	10.9	9.6	7.5	220
225	9.1	8.7	8.1		9.9	9.4	8.6	7.2	10.9	10	8.9	7.3	11.7	10.6	9.3	7.4	225
230	8.8	8.4	7.9		9.6	9.1	8.4	7.1	10.5	9.7	8.7	7.2	11.3	10.3	9.1	7.3	230
235	8.5	8.2	7.8		9.3	8.8	8.2		10.1	9.4	8.5	7.1	10.9	10	8.9	7.2	235
240	8.2	8	7.7		9	8.6	8		9.7	9.1	8.3	7	10.5	9.7	8.7	7.1	240
245	8	7.8	7.6		8.7	8.4	7.8		9.4	8.9	8.2	7	10.2	9.4	8.5	7.1	245
250	7.7	7.6			8.4	8.1	7.7		9.2	8.7	8		9.8	9.1	8.3	7	250
255	7.5				8.1	7.9	7.6		8.9	8.5	7.8		9.5	8.9	8.2	6.9	255
260					7.9	7.8	7.5		8.6	8.2	7.7		9.2	8.7	8		260
265					7.7	7.6			8.3	8	7.6		9	8.5	7.9		265
270					7.6	7.5			8.1	7.9	7.5		8.7	8.3	7.7		270
275					7.4				7.9	7.7	7.4		8.5	8.1	7.6		275
280									7.7	7.6			8.2	7.9	7.5		280
285									7.5	7.5			8	7.8	7.4		285
290									7.4				7.8	7.7	7.4		290
295													7.7	7.5			295
300													7.5	7.4			300
305													7.3				305
310													7.3				310

t_198_111_03101_00_000

Lifting capacities
Forces de levage

TYNZFH 157 ft

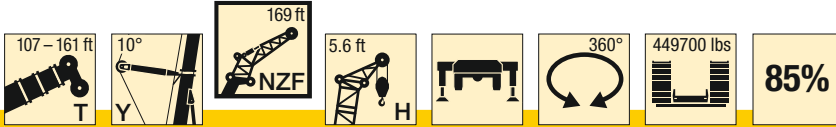


ft	107 ft + 25 ft*				125 ft + 25 ft*				143 ft + 25 ft*				161 ft + 25 ft*				ft
	157 ft				157 ft				157 ft				157 ft				
	0°	10°	20°	38°	0°	10°	20°	38°	0°	10°	20°	38°	0°	10°	20°	38°	
38	45.2																38
40	44.3																40
45	42				41.9				40.8				39.8				45
50	39.6				39.7				38.9				38				50
55	37.4				37.4				37				36.3				55
60	35.6				35.6				35.2				34.6				60
65	33.8				34				33.6				33.1				65
70	32	27.2			32.3				32.1				31.7				70
75	30.2	25.9			30.7	25.9			30.7	25.6			30.4	25.1			75
80	28.8	24.7			29.1	24.7			29.2	24.5			29.1	24.2			80
85	27.5	23.7			27.8	23.7			27.8	23.5			27.8	23.3			85
90	26.2	22.7			26.6	22.7			26.7	22.6			26.5	22.4			90
95	24.9	21.6	18.4		25.5	21.8			25.6	21.8			25.5	21.6			95
100	23.7	20.7	17.7		24.3	20.9	17.6		24.6	20.9			24.6	20.8			100
105	22.6	19.9	17		23.2	20.1	17		23.6	20.1	16.9		23.7	20.1	16.7		105
110	21.6	19.1	16.3		22.2	19.3	16.4		22.6	19.3	16.3		22.7	19.3	16.1		110
115	20.7	18.3	15.6		21.2	18.6	15.8		21.6	18.7	15.7		21.8	18.7	15.6		115
120	19.9	17.5	15		20.4	17.9	15.2		20.7	18	15.2		20.9	18.1	15.1		120
125	19	16.8	14.4		19.6	17.1	14.6		19.9	17.3	14.6		20.1	17.5	14.6		125
130	18.2	16.1	13.8		18.9	16.5	14.1		19.2	16.7	14.1		19.4	16.8	14.1		130
135	17.3	15.5	13.2	9.7	18.1	15.9	13.5		18.5	16.1	13.7		18.8	16.2	13.7		135
140	16.5	14.9	12.6	9.3	17.3	15.4	13	9.4	17.8	15.5	13.2	9.3	18.1	15.7	13.3		140
145	15.7	14.2	12.1	8.9	16.5	14.8	12.5	9	17.2	15	12.7	9	17.5	15.2	12.8	9	145
150	15.1	13.6	11.6	8.6	15.8	14.2	12	8.7	16.5	14.5	12.3	8.8	16.9	14.7	12.4	8.8	150
155	14.5	13	11.1	8.4	15.1	13.7	11.6	8.5	15.8	14	11.9	8.5	16.2	14.3	12	8.5	155
160	13.9	12.4	10.7	8.1	14.6	13.1	11.1	8.2	15.1	13.6	11.5	8.3	15.6	13.8	11.7	8.3	160
165	13.3	12	10.2	7.8	14	12.6	10.7	7.9	14.5	13.1	11.1	8	15	13.3	11.3	8	165
170	12.7	11.5	9.8	7.5	13.5	12.1	10.2	7.7	14	12.6	10.7	7.8	14.3	12.9	10.9	7.8	170
175	12.1	11	9.5	7.3	13	11.7	9.9	7.5	13.5	12.1	10.3	7.6	13.9	12.4	10.6	7.6	175
180	11.5	10.4	9.1	7.1	12.4	11.2	9.6	7.3	13.1	11.7	9.9	7.3	13.5	12	10.2	7.4	180
185	11	10	8.8	6.9	11.9	10.8	9.2	7.1	12.6	11.3	9.6	7.1	13	11.6	9.9	7.2	185
190	10.5	9.6	8.4	6.7	11.4	10.3	8.9	6.8	12.2	10.9	9.3	6.9	12.6	11.3	9.6	7	190
195	10.1	9.2	8.2	6.5	10.9	9.9	8.6	6.7	11.7	10.5	9	6.8	12.2	10.9	9.3	6.9	195
200	9.7	8.9	7.9	6.3	10.5	9.5	8.3	6.5	11.2	10.1	8.7	6.6	11.8	10.6	9	6.7	200
205	9.3	8.6	7.7	6.1	10.1	9.2	8.1	6.3	10.7	9.7	8.4	6.4	11.3	10.2	8.8	6.6	205
210	8.8	8.3	7.4	5.9	9.8	8.9	7.8	6.2	10.4	9.3	8.1	6.3	10.9	9.9	8.5	6.4	210
215	8.4	7.9	7.2	5.7	9.4	8.6	7.6	6	10	9	7.9	6.2	10.5	9.5	8.2	6.3	215
220	8	7.6	7	5.6	9	8.3	7.4	5.9	9.7	8.8	7.7	6	10.1	9.2	8	6.1	220
225	7.8	7.4	6.8	5.5	8.6	8	7.1	5.7	9.3	8.5	7.5	5.9	9.8	9	7.8	6	225
230	7.5	7.2	6.6	5.4	8.2	7.7	6.9	5.6	9	8.3	7.3	5.8	9.5	8.7	7.6	5.9	230
235	7.2	6.9	6.4		7.9	7.4	6.8	5.5	8.7	8	7.1	5.6	9.2	8.5	7.4	5.7	235
240	6.9	6.7	6.2		7.6	7.2	6.6	5.4	8.3	7.7	6.9	5.5	8.9	8.2	7.2	5.6	240
245	6.7	6.4	6.1		7.4	7	6.4	5.4	8	7.5	6.7	5.4	8.6	7.9	7	5.6	245
250	6.4	6.3	6		7.1	6.8	6.3		7.7	7.3	6.6	5.4	8.3	7.7	6.9	5.5	250
255	6.2	6.1	5.9		6.9	6.6	6.1		7.4	7.1	6.4	5.3	8	7.5	6.7	5.4	255
260	6	5.9			6.6	6.4	6		7.2	6.9	6.3		7.7	7.3	6.6	5.3	260
265	5.8	5.8			6.4	6.2	5.9		7	6.7	6.1		7.5	7.1	6.4	5.3	265
270	5.7				6.2	6.1	5.8		6.8	6.5	6		7.3	6.9	6.3		270
275					6	5.9			6.6	6.3	5.9		7.1	6.7	6.1		275
280					5.9	5.8			6.3	6.1	5.8		6.8	6.6	6		280
285					5.7				6.1	6	5.7		6.6	6.4	5.9		285
290									6	5.9			6.4	6.2	5.8		290
295									5.8	5.8			6.2	6.1	5.8		295
300									5.7				6	6	5.7		300
305									5.6				5.9	5.9			305
310													5.8	5.8			310
315													5.6	5.7			315
320													5.5				320

t_198_111_03201_00_000

Lifting capacities Forces de levage

TYNZFH 169 ft

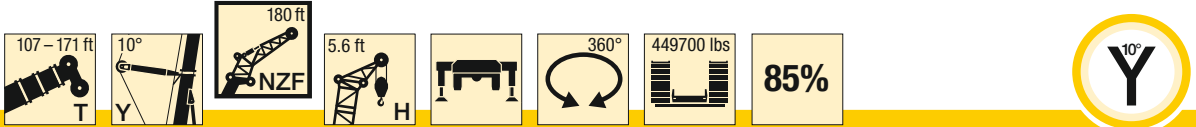


ft	107 ft + 25 ft*				125 ft + 25 ft*				143 ft + 25 ft*				161 ft + 25 ft*				ft
	169 ft				169 ft				169 ft				169 ft				
	0°	10°	20°	38°	0°	10°	20°	38°	0°	10°	20°	38°	0°	10°	20°	38°	
40	38.9																40
45	37.2				37.2												45
50	35.6				35.5				35.1				34.3				50
55	33.9				33.9				33.5				32.8				55
60	32.3				32.3				31.9				31.3				60
65	30.8				30.8				30.4				29.9				65
70	29.2				29.4				29.1				28.6				70
75	27.7	23.7			28	23.6			27.9				27.5				75
80	26.1	22.6			26.5	22.6			26.6	22.3			26.3	21.8			80
85	25	21.6			25.2	21.6			25.3	21.4			25.2	21			85
90	23.9	20.7			24.2	20.7			24.1	20.5			24	20.2			90
95	22.8	19.8			23.1	19.8			23.2	19.7			23	19.5			95
100	21.7	18.9			22.1	19			22.3	19			22.2	18.8			100
105	20.7	18.1	15.4		21.1	18.2	15.3		21.4	18.2			21.3	18.1			105
110	19.7	17.3	14.8		20.1	17.5	14.8		20.5	17.5	14.6		20.5	17.4	14.4		110
115	18.8	16.6	14.2		19.3	16.8	14.2		19.6	16.8	14.1		19.7	16.8	13.9		115
120	18	15.9	13.6		18.4	16.2	13.7		18.7	16.2	13.6		18.9	16.2	13.4		120
125	17.3	15.2	13.1		17.7	15.5	13.1		17.9	15.6	13.1		18.2	15.6	13		125
130	16.6	14.6	12.5		17	14.9	12.6		17.3	15	12.6		17.4	15.1	12.6		130
135	15.8	14	12		16.4	14.3	12.2		16.7	14.5	12.2		16.8	14.6	12.1		135
140	15.1	13.5	11.4		15.7	13.8	11.7		16	13.9	11.7		16.2	14	11.7		140
145	14.3	12.9	10.9	8.1	15	13.3	11.2		15.4	13.4	11.4		15.6	13.5	11.4		145
150	13.6	12.4	10.5	7.8	14.3	12.8	10.8	7.8	14.8	13	11	7.8	15.1	13.1	11		150
155	13	11.8	10	7.5	13.6	12.3	10.4	7.6	14.2	12.5	10.6	7.6	14.5	12.7	10.6	7.6	155
160	12.5	11.3	9.6	7.2	13	11.8	10	7.3	13.6	12.1	10.2	7.3	14	12.3	10.3	7.3	160
165	12	10.8	9.2	6.9	12.5	11.4	9.6	7	13	11.7	9.9	7.1	13.4	11.9	9.9	7.1	165
170	11.5	10.3	8.8	6.6	12.1	10.9	9.2	6.7	12.5	11.2	9.5	6.8	12.9	11.4	9.6	6.9	170
175	10.9	9.9	8.4	6.3	11.6	10.5	8.8	6.5	12	10.8	9.2	6.6	12.3	11	9.4	6.7	175
180	10.4	9.5	8.2	6	11.2	10.1	8.5	6.2	11.6	10.4	8.8	6.4	11.9	10.6	9.1	6.4	180
185	9.9	9.1	7.9	5.7	10.7	9.7	8.2	6	11.2	10	8.5	6.1	11.5	10.3	8.8	6.2	185
190	9.4	8.6	7.6	5.5	10.2	9.3	7.9	5.7	10.8	9.7	8.2	5.9	11.1	9.9	8.5	6	190
195	9	8.2	7.3	5.3	9.8	8.9	7.7	5.5	10.4	9.4	7.9	5.7	10.7	9.6	8.2	5.8	195
200	8.7	7.9	7	5.1	9.3	8.5	7.4	5.3	10	9	7.7	5.5	10.3	9.3	7.9	5.6	200
205	8.3	7.6	6.8	4.9	9	8.2	7.1	5.1	9.5	8.7	7.5	5.3	9.9	9	7.7	5.4	205
210	8	7.4	6.6	4.7	8.6	7.9	6.9	4.9	9.1	8.4	7.2	5.1	9.6	8.7	7.5	5.2	210
215	7.6	7.1	6.3	4.5	8.3	7.6	6.7	4.8	8.8	8	7	4.9	9.2	8.4	7.2	5.1	215
220	7.3	6.8	6.1	4.3	8	7.4	6.5	4.6	8.4	7.7	6.7	4.8	8.8	8.1	7	4.9	220
225	7	6.5	5.9	4.2	7.7	7.1	6.3	4.4	8.1	7.5	6.6	4.6	8.5	7.8	6.8	4.7	225
230	6.6	6.3	5.7	4	7.4	6.8	6.1	4.3	7.8	7.3	6.4	4.5	8.2	7.5	6.6	4.6	230
235	6.4	6.1	5.5	3.9	7	6.6	5.9	4.2	7.6	7	6.2	4.3	7.9	7.3	6.4	4.4	235
240	6.2	5.9	5.3	3.9	6.7	6.4	5.7	4	7.3	6.8	6	4.2	7.6	7.1	6.2	4.3	240
245	5.9	5.7	5.2	3.8	6.4	6.1	5.5	3.9	7	6.6	5.8	4.1	7.4	6.9	6	4.2	245
250	5.7	5.5	5		6.2	5.9	5.4	3.9	6.7	6.3	5.6	4	7.1	6.7	5.8	4	250
255	5.4	5.3	4.9		6	5.7	5.2	3.8	6.4	6.1	5.5	3.9	6.9	6.4	5.6	3.9	255
260	5.2	5.1	4.8		5.8	5.5	5.1		6.1	5.9	5.3	3.8	6.6	6.2	5.5	3.8	260
265	5	5	4.7		5.6	5.4	4.9		5.9	5.7	5.2	3.8	6.3	6	5.3	3.7	265
270	4.9	4.8			5.3	5.2	4.8		5.7	5.5	5		6.1	5.8	5.2	3.7	270
275	4.7	4.7			5.1	5	4.7		5.5	5.3	4.9		5.8	5.6	5.1	3.7	275
280	4.6				4.9	4.9	4.6		5.3	5.2	4.8		5.7	5.5	4.9	3.6	280
285					4.8	4.7			5.1	5	4.7		5.5	5.3	4.8		285
290					4.6	4.6			4.9	4.8	4.6		5.3	5.1	4.7		290
295					4.4				4.7	4.7	4.5		5.1	5	4.6		295
300									4.6	4.6			4.9	4.8	4.5		300
305									4.5	4.5			4.7	4.7	4.4		305
310									4.3				4.5	4.6	4.4		310
315									4.2				4.4	4.5			315
320													4.3	4.4			320
325													4.2	4.3			325
330													4.1				330

t_198_111_03301_00_000

Lifting capacities Forces de levage

TYNZFH 180 ft

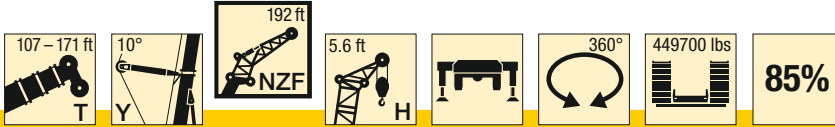


ft	107 ft + 25 ft*				125 ft + 25 ft*				143 ft + 25 ft*				161 ft + 25 ft*				164 ft + 25 ft*				167 ft + 25 ft*				171 ft + 25 ft*				ft
	180 ft				180 ft				180 ft				180 ft				180 ft				180 ft								
	0°	10°	20°	38°	0°	10°	20°	38°	0°	10°	20°	38°	0°	10°	20°	38°	0°	10°	20°	38°	0°	10°	20°	38°	0°	10°	20°	38°	
45	31.5				31.5																						45		
50	31.5				31.5				31.4				30.9			31				31.1				31				50	
55	30.8				30.9				30.2				29.8			29.9				29.9				29.9				55	
60	29.2				29.2				28.8				28.7			28.7				28.7				28.7				60	
65	27.8				27.8				27.4				27.6			27.6				27.5				27.4				65	
70	26.4				26.5				26.2				26.6			26.5				26.3				26.2				70	
75	25.1				25.3				25				25.5			25.4				25.3				25.2				75	
80	23.7	20.4			24	20.2			23.9				24.5			24.4				24.3				24.2				80	
85	22.5	19.4			22.7	19.4			22.8	19.1			23.5	18.7		23.4	18.6			23.3	18.5			23.2	18.3			85	
90	21.5	18.5			21.7	18.5			21.7	18.3			22.4	18		22.4	17.9			22.3	17.8			22.3	17.7			90	
95	20.5	17.7			20.7	17.7			20.7	17.5			21.4	17.3		21.4	17.2			21.3	17.2			21.3	17.1			95	
100	19.5	16.9			19.8	17			19.8	16.8			20.6	16.6		20.5	16.5			20.4	16.5			20.4	16.4			100	
105	18.5	16.1			18.9	16.2			19	16.2			19.8	16		19.7	15.9			19.7	15.9			19.6	15.8			105	
110	17.6	15.4	13		18	15.5	12.9		18.2	15.5			19	15.4		19	15.3			19	15.3			18.9	15.2			110	
115	16.7	14.7	12.4		17.2	14.9	12.4		17.4	14.8	12.2		18.3	14.8	12.1		18.3	14.7	12		18.3	14.7	11.9		18.3	14.7			115
120	16	14.1	11.9		16.4	14.2	11.9		16.6	14.2	11.8		17.6	14.2	11.6		17.5	14.2	11.6		17.5	14.1	11.5		17.6	14.1	11.5		120
125	15.3	13.5	11.4		15.6	13.7	11.4		15.9	13.7	11.3		16.8	13.6	11.2		16.8	13.6	11.1		16.8	13.6	11.1		16.9	13.6	11.1		125
130	14.6	12.8	10.9		15	13.1	10.9		15.1	13.2	10.9		16.1	13.2	10.8		16.1	13.1	10.7		16.1	13.1	10.7		16.2	13.1	10.6		130
135	14	12.3	10.4		14.4	12.5	10.5		14.6	12.6	10.5		15.5	12.7	10.4		15.4	12.7	10.4		15.5	12.6	10.3		15.5	12.6	10.3		135
140	13.3	11.8	10		13.8	12	10.1		14	12.1	10.1		14.9	12.2	10		14.8	12.2	10		14.8	12.2	9.9		14.9	12.2	9.9		140
145	12.6	11.3	9.5		13.2	11.5	9.7		13.5	11.6	9.7		14.4	11.7	9.6		14.3	11.7	9.6		14.4	11.7	9.5		14.4	11.7	9.6		145
150	12	10.8	9.1		12.6	11.1	9.3		12.9	11.1	9.3		13.9	11.3	9.3		13.8	11.2	9.3		13.9	11.3	9.2		13.9	11.3	9.2		150
155	11.3	10.3	8.7	5.9	12	10.6	8.9	5.9	12.4	10.7	9		13.4	10.8	8.9		13.3	10.8	8.9		13.4	10.8	8.9		13.4	10.8	8.9		155
160	10.8	9.8	8.3	5.5	11.4	10.2	8.5	5.6	11.8	10.4	8.6	5.4	12.9	10.5	8.6	5.3	12.8	10.4	8.6	5.2	12.9	10.5	8.6		12.9	10.4	8.6		160
165	10.3	9.4	8	5.2	10.8	9.7	8.2	5.3	11.3	10	8.3	5.1	12.4	10.1	8.3	5	12.3	10.1	8.3	5	12.4	10.1	8.3	4.9	12.4	10.1	8.3	4.9	165
170	9.9	8.9	7.7	4.9	10.3	9.3	7.9	5	10.7	9.6	8	4.8	11.8	9.7	8	4.8	11.8	9.7	8	4.7	11.9	9.7	8	4.7	11.9	9.8	8	4.7	170
175	9.4	8.5	7.3	4.6	9.9	8.9	7.5	4.7	10.3	9.2	7.7	4.6	11.3	9.4	7.7	4.5	11.3	9.4	7.7	4.5	11.4	9.4	7.7	4.4	11.4	9.4	7.7	4.4	175
180	9	8.2	7	4.3	9.5	8.5	7.2	4.4	9.8	8.8	7.4	4.3	10.8	9	7.4	4.3	10.8	9	7.4	4.2	10.9	9	7.4	4.2	11	9.1	7.4	4.2	180
185	8.6	7.8	6.6	4	9.1	8.2	6.9	4.1	9.4	8.4	7.1	4.1	10.4	8.7	7.1	4	10.4	8.6	7.2	4	10.4	8.7	7.2	4	10.5	8.7	7.2	4	185
190	8.1	7.5	6.3		8.7	7.8	6.6	3.8	9.1	8	6.8	3.8	10	8.3	6.9	3.8	10	8.3	6.9	3.8	10.1	8.3	6.9	3.8	10.1	8.4	6.9		190
195	7.7	7.1	5.9		8.3	7.5	6.3		8.7	7.8	6.4		9.6	8	6.6		9.6	8	6.6		9.7	8	6.6		9.7	8.1	6.7		195
200	7.3	6.8	5.6		7.9	7.2	6		8.3	7.5	6.1		9.3	7.7	6.3		9.3	7.7	6.3		9.3	7.7	6.4		9.4	7.7	6.4		200
205	6.9	6.4	5.2		7.5	6.9	5.7		8	7.2	5.9		8.9	7.4	6		8.9	7.4	6.1		9	7.4	6.1		9	7.4	6.1		205
210	6.6	6.1	4.9		7.1	6.6	5.3		7.6	6.9	5.6		8.6	7.1	5.8		8.6	7.1	5.8		8.7	7.1	5.8		8.7	7.2	5.9		210
215	6.3	5.8	4.6		6.8	6.2	5		7.2	6.6	5.3		8.2	6.8	5.5		8.2	6.9	5.5		8.3	6.9	5.6		8.4	6.9	5.6		215
220	6	5.5	4.4		6.5	6	4.7		6.9	6.3	5		7.9	6.6	5.3		7.9	6.6	5.3		8	6.6	5.3		8	6.7	5.3		220
225	5.7	5.2	4.1		6.2	5.7	4.5		6.6	6	4.7		7.5	6.3	5		7.6	6.3	5		7.7	6.4	5.1		7.7	6.4	5.1		225
230	5.3	4.8	3.8		5.9	5.4	4.3		6.3	5.7	4.5		7.2	6	4.8		7.2	6.1	4.8		7.3	6.1	4.8		7.4	6.2	4.8		230
235	4.9	4.5			5.6	5.1	4		6	5.5	4.2		6.9	5.7	4.5		6.9	5.8	4.5		7	5.8	4.6		7	5.9	4.6		235
240	4.6	4.2			5.3	4.8	3.8		5.8	5.2	4		6.6	5.5	4.3		6.6	5.6	4.3		6.7	5.6	4.4		6.8	5.6	4.3		240
245	4.3	4			5	4.5			5.5	5	3.8		6.4	5.3	4.1		6.4	5.3	4.1		6.5	5.4	4.1		6.5	5.4	4.1		245
250	4	3.7			4.6	4.2			5.2	4.7			6.1	5.1	3.9		6.1	5.1			6.2	5.2	3.9		6.3	5.2	3.9		250
255	3.8				4.3	4			4.9	4.4			5.9	4.8	3.7		5.9	4.9			6	4.9			6	5			255
260					4				4.6	4.2			5.6	4.6			5.7	4.6			5.7	4.7			5.8	4.7			260
265					3.8				4.3	3.9			5.4	4.3			5.4	4.4			5.5	4.4			5.6	4.5			265
270									4	3.7			5.1	4.1			5.2	4.2			5.2	4.2			5.3	4.3			270
275													4.9	3.8			4.9	3.9			5	4			5.1	4			275
280													4.6				4.7				4.8	3.7			4.9	3.8			280
285													4.4				4.5				4.5				4.6				285
290													4.2				4.3				4.3				4.4				290
295													4				4.1				4.1				4.2				295
300													3.8				3.8				3.9				4				300
305																					3.7				3.8				305
310																									3.6				310

t_198_111_03401_00_000

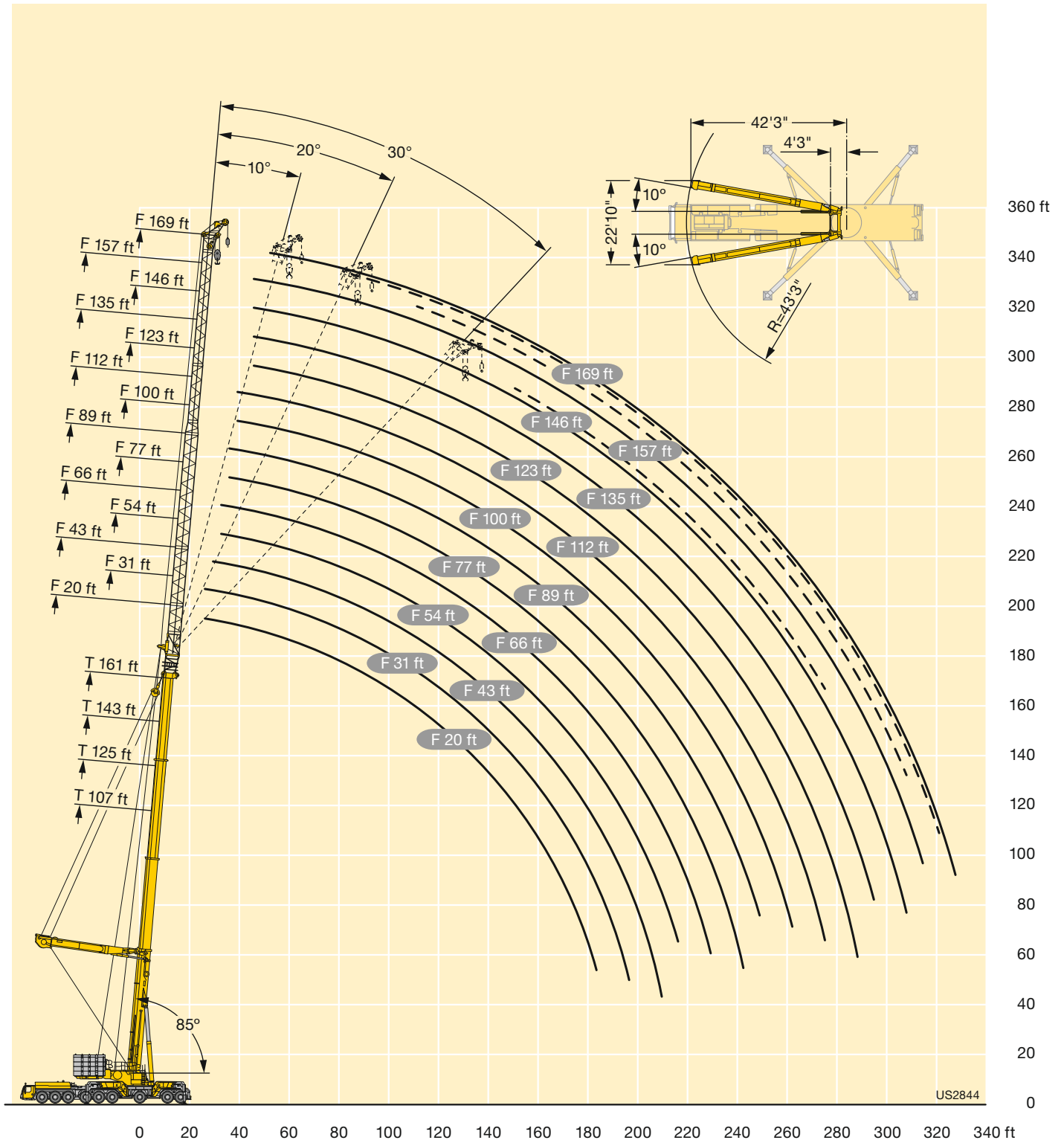
Lifting capacities Forces de levage

TYNZFH 192 ft



ft	107 ft + 25 ft*			125 ft + 25 ft*			143 ft + 25 ft*			161 ft + 25 ft*			164 ft + 25 ft*			167 ft + 25 ft*			171 ft + 25 ft*			ft	
	192 ft			192 ft			192 ft			192 ft			192 ft			192 ft			192 ft				
	0°	10°	20°	0°	10°	20°	0°	10°	20°	0°	10°	20°	0°	10°	20°	0°	10°	20°	0°	10°	20°		
45	31.1			31.3																		45	
50	29.5			29.9			29.4			28.6												50	
55	27.9			28.6			28.2			27.4			27.2			27				26.9		55	
60	26.4			27.2			26.9			26.2			26			25.9				25.8		60	
65	25.1			25.9			25.5			25			24.9			24.7				24.7		65	
70	23.9			24.8			24.4			23.9			23.8			23.6				23.5		70	
75	22.7			23.6			23.3			22.9			22.7			22.6				22.5		75	
80	21.5	18.2		22.5			22.3			22			21.8			21.7				21.6		80	
85	20.2	17.4		21.3	17.3		21.3			21			20.9			20.8				20.8		85	
90	19.3	16.6		20.2	16.5		20.3	16.3		20.1	15.9		20	15.9		20	15.7			19.9	15.7	90	
95	18.4	15.8		19.3	15.8		19.3	15.6		19.2	15.3		19.1	15.2		19.1	15.1			19	15.1	95	
100	17.5	15.1		18.5	15.1		18.4	14.9		18.3	14.7		18.2	14.6		18.2	14.5			18.2	14.5	100	
105	16.6	14.4		17.7	14.4		17.7	14.3		17.6	14.1		17.5	14		17.4	13.9			17.4	13.9	105	
110	15.7	13.7		16.9	13.7		17	13.7		16.9	13.5		16.8	13.4		16.8	13.4			16.7	13.3	110	
115	14.9	13	10.9	16	13.1	10.7	16.2	13.1		16.2	13		16.2	12.9		16.1	12.9			16.1	12.8	115	
120	14.1	12.4	10.4	15.2	12.5	10.3	15.5	12.5	10.1	15.6	12.4	9.9	15.5	12.4		15.5	12.3			15.5	12.3	120	
125	13.5	11.8	9.9	14.5	12	9.8	14.8	11.9	9.7	14.9	11.9	9.6	14.9	11.8	9.5	14.9	11.8	9.5		14.9	11.8	9.4	125
130	12.9	11.3	9.4	13.8	11.4	9.4	14.1	11.4	9.3	14.2	11.4	9.2	14.2	11.4	9.1	14.2	11.3	9.1		14.2	11.3	9	130
135	12.3	10.7	8.9	13.3	10.9	9	13.4	11	8.9	13.6	10.9	8.7	13.6	10.9	8.7	13.6	10.9	8.7		13.6	10.9	8.6	135
140	11.7	10.2	8.4	12.7	10.4	8.5	12.9	10.5	8.5	13	10.5	8.3	13	10.5	8.3	13	10.5	8.3		13	10.4	8.2	140
145	11.1	9.7	8	12.2	9.9	8	12.4	10	8	12.5	10.1	8	12.5	10.1	7.9	12.5	10	7.9		12.5	10	7.8	145
150	10.5	9.3	7.5	11.6	9.5	7.6	11.9	9.6	7.6	12	9.6	7.6	12	9.6	7.5	12	9.6	7.5		12	9.6	7.5	150
155	9.9	8.8	7	11.1	9.1	7.2	11.4	9.1	7.2	11.6	9.2	7.2	11.6	9.2	7.1	11.6	9.2	7.1		11.6	9.2	7.1	155
160	9.3	8.4	6.6	10.5	8.7	6.8	10.9	8.8	6.8	11.1	8.8	6.8	11.1	8.8	6.8	11.1	8.8	6.8		11.1	8.8	6.8	160
165	8.8	8	6.2	9.9	8.3	6.4	10.4	8.4	6.5	10.7	8.5	6.5	10.7	8.5	6.5	10.7	8.5	6.4		10.7	8.5	6.4	165
170	8.4	7.6	5.8	9.4	7.9	6	9.9	8.1	6.1	10.2	8.1	6.1	10.2	8.2	6.1	10.2	8.1	6.1		10.3	8.2	6.1	170
175	8	7	5.4	9	7.5	5.7	9.4	7.7	5.7	9.7	7.8	5.8	9.8	7.8	5.8	9.8	7.8	5.7		9.8	7.8	5.7	175
180	7.6	6.5	5	8.5	7.1	5.3	8.9	7.4	5.4	9.3	7.5	5.4	9.3	7.5	5.4	9.4	7.5	5.4		9.4	7.5	5.4	180
185	7.2	6.2	4.6	8.2	6.6	4.9	8.5	7	5.1	8.8	7.2	5.2	8.9	7.2	5.2	8.9	7.2	5.1		9	7.2	5.1	185
190	6.7	5.8	4.3	7.8	6.2	4.6	8.2	6.6	4.8	8.4	6.8	4.9	8.4	6.8	4.9	8.5	6.9	4.9		8.5	6.9	4.8	190
195	6.2	5.4	3.9	7.4	5.8	4.2	7.8	6.1	4.4	8.1	6.5	4.6	8.1	6.5	4.6	8.1	6.5	4.6		8.2	6.5	4.6	195
200	5.7	5	3.6	7.1	5.5	3.9	7.5	5.8	4.1	7.7	6.1	4.3	7.7	6.1	4.3	7.8	6.2	4.3		7.8	6.2	4.3	200
205	5.2	4.6	3.4	6.7	5.1	3.6	7.1	5.5	3.8	7.4	5.7	4	7.4	5.7	4	7.4	5.8	4		7.5	5.8	4	205
210	4.8	4.2	3.1	6.3	4.7	3.4	6.8	5.1	3.5	7.1	5.4	3.7	7.1	5.4	3.7	7.1	5.4	3.7		7.2	5.4	3.7	210
215	4.5	3.8	2.9	5.9	4.4	3.1	6.4	4.8	3.3	6.8	5.1	3.4	6.8	5.1	3.4	6.8	5.1	3.5		6.9	5.1	3.5	215
220	4.1	3.5	2.7	5.5	4	2.9	6.1	4.5	3.1	6.4	4.8	3.2	6.5	4.8	3.2	6.5	4.8	3.2		6.6	4.8	3.3	220
225	3.8	3.2	2.5	5.1	3.7	2.7	5.7	4.1	2.9	6.1	4.5	3	6.2	4.5	3	6.2	4.6	3		6.3	4.6	3.1	225
230	3.4	3	2.3	4.8	3.4	2.5	5.3	3.8	2.7	5.8	4.2	2.8	5.9	4.2	2.8	5.9	4.3	2.9		6	4.3	2.9	230
235	3.1	2.8		4.4	3.1	2.4	4.9	3.5	2.5	5.4	3.8	2.7	5.5	3.9	2.7	5.6	4	2.7		5.7	4	2.7	235
240	2.8	2.6		4.1	2.9		4.6	3.2	2.3	5.1	3.5	2.5	5.2	3.6	2.5	5.2	3.7	2.5		5.3	3.7	2.6	240
245	2.5	2.3		3.8	2.7		4.3	3		4.8	3.2	2.3	4.8	3.3	2.3	4.9	3.4	2.4		5	3.4	2.4	245
250	2.3			3.4	2.5		4	2.8		4.4	3		4.5	3.1		4.6	3.1			4.6	3.1	2.2	250
255				3.1	2.3		3.7	2.6		4.2	2.8		4.2	2.8		4.3	2.9			4.3	2.9		255
260				2.8			3.4	2.4		3.9	2.6		4	2.7		4	2.7			4.1	2.7		260
265				2.5			3.1	2.2		3.6	2.5		3.7	2.5		3.7	2.5			3.8	2.5		265
270				2.3			2.8			3.3	2.3		3.4	2.3		3.5	2.4			3.5	2.4		270
275							2.5			3			3.1			3.2				3.3	2.2		275
280							2.3			2.8			2.8			2.9				3			280
285										2.5			2.5			2.6				2.7			285
290										2.3			2.3			2.4				2.5			290
295																				2.3			295

t_198_111_03501_00_000



Remarks referring to load charts

1. The lifting capacities do not exceed 85 % of the tipping load according to ASME B 30.5.
The crane's structural steelwork is in accordance with EN 13000 and ASME B 30.5.
2. For the calculation of the load charts at least a wind speed of 23 ft/s (7 m/s, 15.7 mph) and regarding the load a sail area of 1 m² per ton load and a wind resistance coefficient of 1.2 on the load have been taken into account. For lifting of loads with large sail areas and/or high wind resistance coefficients the maximum wind speed as stated in the load charts has to be reduced.
3. Lifting capacities are given in kips.
4. The weight of the hook blocks and hooks is part of the load and therefore it must be deducted from the lifting capacities.
5. Working radii are measured from the slewing centre.
6. The lifting capacities given for the telescopic boom apply if the folding jib is removed.
7. Subject to modification of lifting capacities.
8. Lifting capacities above 593 kips only with special equipment.
9. The data of this brochure serves only for general information. All information is provided without warranty. Instructions for the correct commissioning of the crane please take from the operation manual and the load chart book.

Remarques relatives aux tableaux des charges

1. La capacité de charge ne doit pas dépasser 85 % de la charge de basculement conformément à ASME B 30.5.
La structure métallique de la grue est conforme à EN 13000 et ASME B 30.5.
2. Une vitesse de vent de 23 ft/s (7 m/s, 15.7 mph) minimum, une surface de prise au vent de 1 m² par tonne ainsi qu'un coefficient de résistance au vent de la charge 1,2 sont pris en compte pour le calcul des tableaux de charge. Lorsque des charges ayant une surface de prise au vent et/ou un coefficient de résistance au vent plus élevé(e)s sont levées, la vitesse de vent maximale indiquée dans les tableaux de charge doit être réduite.
3. Les charges sont indiquées en kips.
4. Le poids du crochet de levage resp. de la moufle à crochet est une partie de la charge et doit donc être déduit de la capacité de charge.
5. Les portées sont calculées à partir de l'axe de rotation.
6. Les charges indiquées pour la flèche télescopique sont valables lorsque la fléchette pliante est démontée.
7. Charges données sous réserve de modification.
8. Les charges supérieures à 593 kips seulement avec équipement supplémentaire.
9. Les données de cette brochure sont données à titre informatif. Ces renseignements sont sans garantie. Les consignes relatives à la bonne mise en service de la grue sont disponibles dans le manuel d'utilisation et le manuel de tableaux de charge.

Subject to modification / Sous réserve de modifications

Printed in Germany (1)

TDZ 198.00.US09.2014

Liebherr-Werk Ehingen GmbH

Postfach 1361, 89582 Ehingen, Germany

☎ +49 73 91 5 02-0, Fax +49 73 91 5 02-33 99

www.liebherr.com, E-mail: info.lwe@liebherr.com

www.facebook.com/LiebherrConstruction