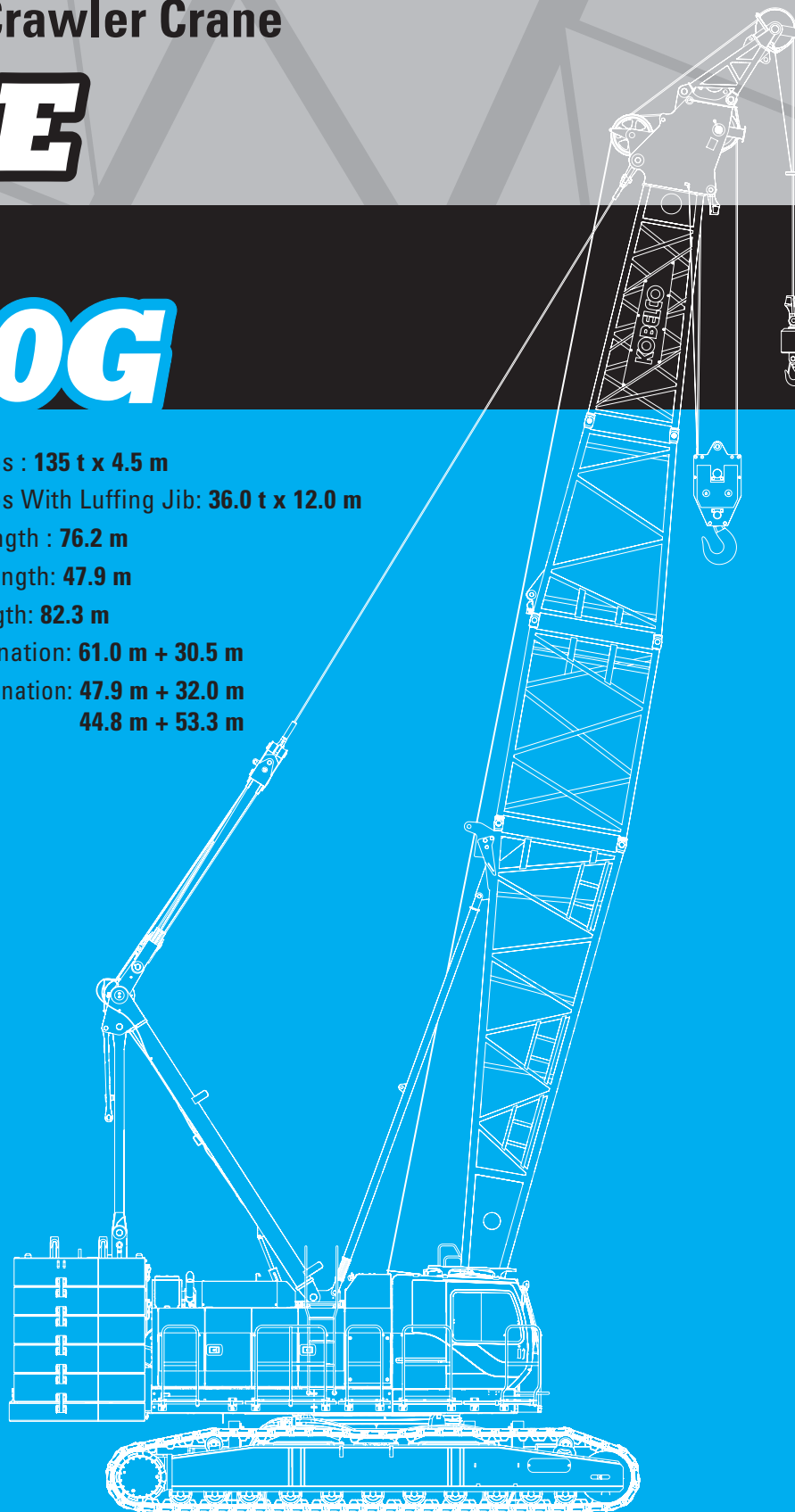


Hydraulic Crawler Crane

CKE

1350G

- Max. Lifting Capacities : **135 t x 4.5 m**
- Max. Lifting Capacities With Luffing Jib: **36.0 t x 12.0 m**
- Max. Crane Boom Length : **76.2 m**
- Max. Luffing Boom Length: **47.9 m**
- Max. Long Boom Length: **82.3 m**
- Max. Fixed Jib Combination: **61.0 m + 30.5 m**
- Max. Luffing Jib Combination: **47.9 m + 32.0 m**
44.8 m + 53.3 m



Model : CKE1350G

KOBELCO



CKE1350G CONTENTS

3

SPECIFICATIONS

5

GENERAL DIMENSIONS

7

BOOM AND JIB ARRANGEMENTS

11

WORKING RANGES

17

SUPPLEMENTAL DATA

18

LIFTING CAPACITIES

36

TRANSPORTATION PLAN

37

PARTS AND ATTACHMENTS

SPECIFICATIONS



Power Plant

Model: HINO P11C-VC

Type: 4 cycle, water-cooled, vertical in-line 6, direct injection, turbo-charger, intercooler

Complies with NRMM (Europe) Stage IIIB and US EPA Tier Interim Tier 4

Displacement: 10,520 liters

Rated power: 271 kW/1850 min⁻¹ (363 HP / 1,850 rpm)

Max. Torque: 1,469 N·m/1,400 min⁻¹

Cooling System: Water-cooled

Starter: 24V-6kW

Radiator: Corrugated type core, thermostatically controlled

Air cleaner: Dry type with replaceable paper element

Throttle: Twist grip type hand throttle, electrically actuated

Fuel filter: Replaceable paper element

Batteries: Two 12 V x 136 Ah/5HR capacity batteries, series connected

Fuel tank capacity: 400 liters



Hydraulic System

Main pumps: 4 variable displacement piston pumps

Control: Full-flow hydraulic control system for infinitely variable pressure to all winches, propel and swing. Controls respond instantly to the touch, delivering smooth function operation.

Cooling: Oil-to-air heat exchanger (plate-fin type)

Filtration: Full-flow and bypass type with replaceable element

Max. relief valve pressure:

Load hoist, boom hoist and propel system:

31.9 MPa (4,626 psi)

Swing system: 27.5 MPa (3,989 psi)

Control system: 5.4 MPa (783 psi)

Hydraulic Tank Capacity: 535 liters (141.3 US Gal)



Boom Hoisting System

Powered by a hydraulic motor through a planetary reducer.

Brake: A spring-set, hydraulically released multiple-disc brake is mounted on the boom hoist motor and operated through a counter-balance valve.

Drum Lock: External ratchet for locking drum

Drum: Single drum, grooved for 20 mm dia. wire rope

Line Speed: Single line on first drum layer

Hoisting/Lowering: 48 to 2 m/min

Diameter of wire rope

Main winch: 26 mm x 275 m (1-1/32 in x 902 ft)

Aux. winch: 26 mm x 235 m (1-1/32 in x 755 ft)

Third winch: 26 mm x 240 m (1-1/32 in x 787 ft)

Boom hoisting/lowering: 20 mm x 190 m (25/32 in x 623 ft)

Boom guy line: 30 m (1-3/16 in)

Boom backstops: Required for all boom length



Load Hoisting System

Front and rear drums for load hoist powered by a hydraulic variable plunger motors, driven through planetary reducers.

Negative Brake: A spring-set, hydraulically released multiple-disc brake is mounted on the hoist motor and operated through a counter-balance valve. (Positive free fall brake is optional)

Drum Lock: External ratchet for locking drum

Drums:

Front Drums:

666 mm (2 ft 2-3/16 inch) P.C.D x 672 m (2 ft 2-15/32 inch) wide drum, grooved for 26 mm (1-1/32 inch) wire rope. Rope capacity is 275 m (902 ft) working length and 350 m (1,148 ft) storage length.

Rear Drum: 666 mm (2 ft 2-3/16 inch) P.C.D x 672 m (22 ft 2-15/32 inch), grooved for 26 mm (1-1/32 inch) wire rope. Rope capacity is 255 m (837 ft) working length and 350 m (1,148 ft) storage length.

Line Speed: Single line on first drum layer

Hoisting/lowering: 120 to 3 m/min

Line Pull:

Max. Line Pull (Single Line): 233 kN (52,500 lbs)
(Referential performance)

Rated Line Pull: 132 kN (29,500 lbs)



Swing System

Swing unit is powered by hydraulic motor driving spur gears through planetary reducers (2 set), the swing system provides 360° rotation.

Swing parking brakes: A spring-set, hydraulically released multiple-disc brake is mounted on swing motor.

Swing circle: Single-row ball bearing with an integral internally cut swing gear.

Swing lock: Manually, four position lock for transportation

Swing Speed: 2.1 min⁻¹ (2.1 rpm)



Upper Structure

Torsion-free precision machined upper frame. All components are located clearly and service friendly. Engine will with low noise level.

Counter weight: 55.0 ton



Cab & Control

Totally enclosed, full vision cab with safety glass, fully adjustable, high backed seat with a headrest and armrests, and intermittent wiper and window washer (skylight and front window).

Cab fittings:

Air conditioner, convenient compartment (for tool), cup holder, ashtray, cigarette lighter, sun visor, roof blind, tinted glass, floor mat, footrest, and shoe tray

Controls:

Four adjustable levers for front drum, rear drum, boom drum and swing controls.

**Lower Structure**

Steel-welded carbody with axles. Crawler assemblies are designed with quick disconnect feature for individual removal as a unit from axles. Crawler belt tension is maintained by hydraulic jack force on the track adjusting bearing block.

Carbodyweight: 10.8 ton

Crawler drive: Independent hydraulic propel drive is built into each crawler side frame. Each drive consists of a hydraulic motor propelling a driving tumbler through a planetary gear box. Hydraulic motor and gear box are built into the crawler side frame within the shoe width.

Crawler brakes: Spring-set, hydraulically released parking brakes are built into each propel drive.

Steering mechanism: A hydraulic propel system provides both skid steering (driving one track only) and counter-rotating steering (driving each track in opposite directions).

Track rollers: Sealed track rollers for maintenance-free operation.

Shoe (flat): 910 mm wide each crawler

Max. gradeability: 30%

**Weight**

Including upper and lower machine, 55.0 ton counterweight and 10.8 ton carbody weight, basic boom (or basic boom + basic jib), hook, and other accessories.

Weight: 136 ton

Ground pressure: 106 kPa (11.7 psi)

**Attachment****Boom & Jib:**

Welded lattice construction using tubular, high-tensile steel chords with pin connection between sections.

Boom and Jib length

	Min. Length (Min. combination)	Max. Length (Min. combination)
Crane Boom	15.2 m	76.2 m
Fixed lib	27.4 m + 12.2 m	61.0 m + 30.5 m

Main Specifications (Model: CKE1350G)

Crane Boom	
Max. Lifting Capacity	135 t x 4.5 m
Max. Length	76.2 m
Fixed Jib	
Max. Lifting Capacity	26.8 t x 16.0 m
Max. Combination	61.0 m + 30.5 m
Long Boom	
Max. Lifting Capacity	44.3 t/10.6 m
Max. Length	82.3 m
Luffing Boom	
Max. Lifting Capacity	80 t/ 8.0 m
Max. Length	47.9 m
Luffing Jib	
Max. Jib Length	53.3 m
Max. Combination	44.8 m + 53.3 m, 47.9 m + 32.0 m
Main & Aux. Winch	
Max. Line Speed (1st layer)	120 m/min
Rated Line Pull (Single line)	132 kN {13.5 tf}
Wire Rope Diameter	26 mm x 275 m
Wire Rope Length	275m (Main), 255 m (Aux.)
Brake Type	Wet-type multiple disc brake (Optional)
Working Speed	
Swing Speed	2.1 min ⁻¹ {rpm}
Travel Speed	1.3/0.9 km/h

Power Plant	
Model	HINO P11C-VC
Engine Output	271 kW/1850 min ⁻¹
Fuel Tank	400 liters
Hydraulic System	
Main Pumps	3 variable displacement
Max. Pressure	31.9 Mpa {325 kg/cm ² }
Hydraulic Tank Capacity	535 liters
Self-Removal Device	
	counterweight/crawler self-removal device (Standard)
Weight	
Operating Weight	136 t *1
Ground Pressure	106 kPa
Counterweight	55,000 kg
Transport Weight	33,930 kg *2

Units are SI units. { } indicates conventional units.

Line speeds in table are for light loads. Line speed varies with load.

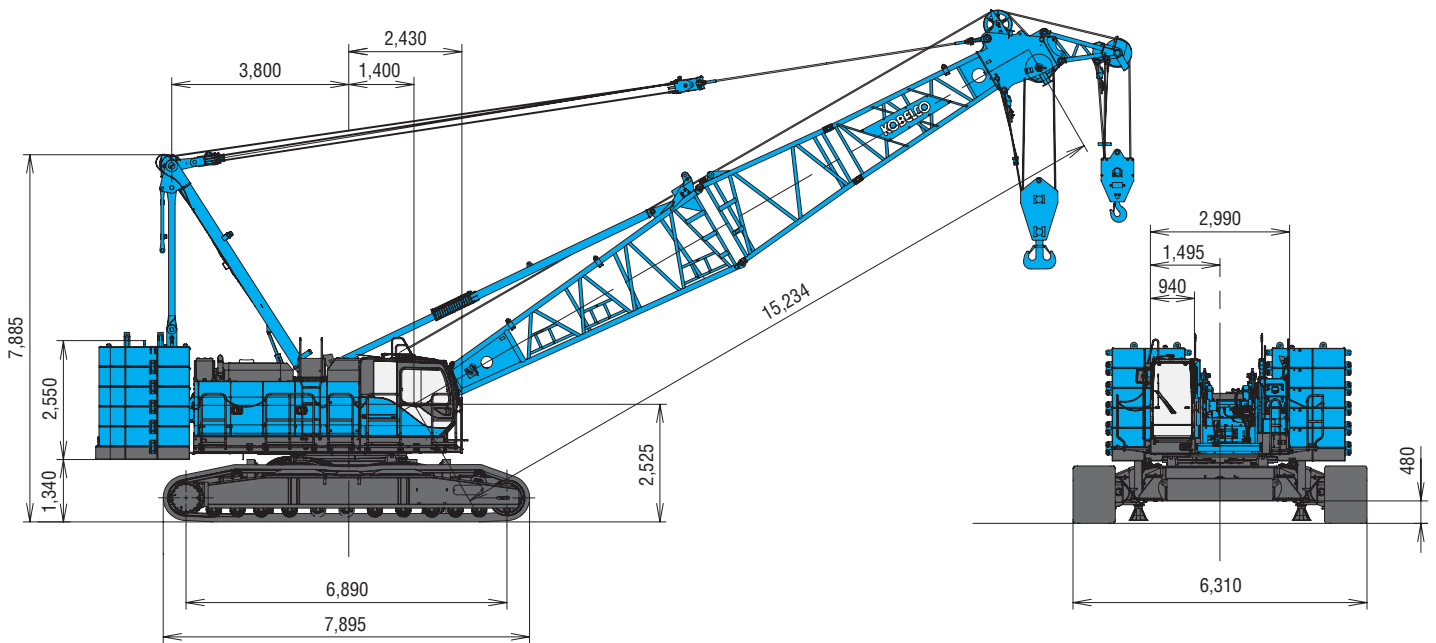
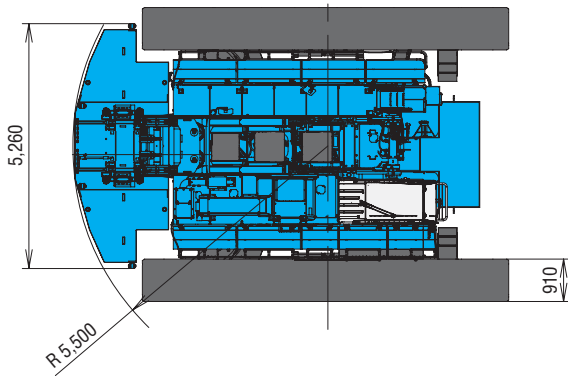
*1 Including upper and lower machine, 55.0 ton counterweight, 10.8 ton carbody weight, basic boom, hook, and other accessories.

*2 Base Machine with gantry, wire ropes (front/rear/boom hoist)

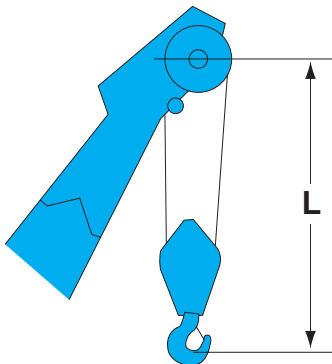
GENERAL DIMENSIONS

Crane Boom

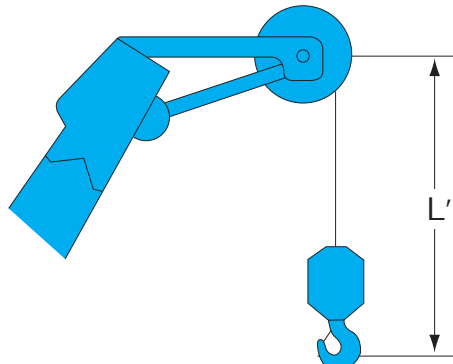
(Unit: mm)



Limit of Hook Lifting



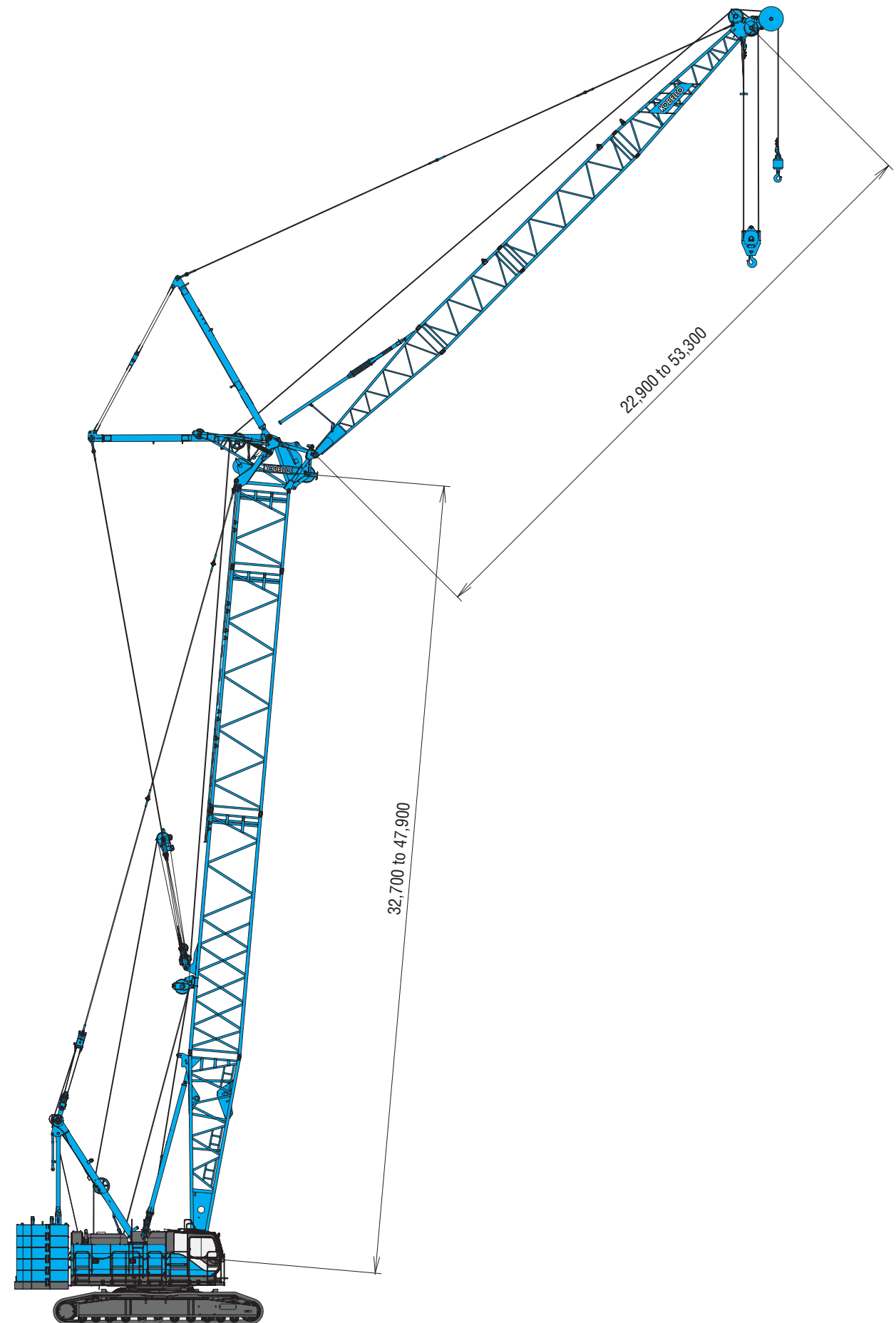
Hook	L
135 t hook	4.7 m
70 t hook	4.5 m
35 t hook	4.3 m



Hook	L'
13.5 t ball hook	3.7 m
13.5 t swivel hook	3.4 m

Luffing Jib

(Unit: mm)



BOOM AND JIB ARRANGEMENTS

Crane Boom Arrangements

Boom length m (ft)	Boom arrangement
15.2 (50)	
18.3 (60)	
21.3 (70)	
24.4 (80)	
27.4 (90)	
30.5 (100)	
33.5 (110)	
36.6 (120)	
39.5 (130)	
42.7 (140)	
45.7 (150)	
48.8 (160)	
51.8 (170)	

Boom length m (ft)	Boom arrangement
54.9 (180)	
57.9 (190)	
61.0 (200)	
64.0 (210)	
67.1 (220)	
70.1 (230)	
73.2 (240)	
76.2 (250)	

Symbol	Boom Length	Remarks
	7.6 m	Boom Base
	4.6 m	Boom Top
	3.0 m	Tapered Boom
	3.0 m	Insert Boom
	6.1 m	Insert Boom
	9.1 m	Insert Boom

↗ mark shows the guy line installing position when the fixed jib is used.

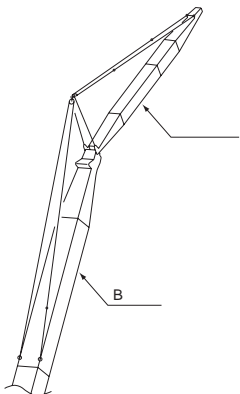
Indicates the most flexible combination of insert booms, which can be modified to form all shorter boom arrangements.

Long Boom Arrangements

Boom length m (ft)	Boom arrangement
51.8 (170)	
54.9 (180)	
57.9 (190)	
61.0 (200)	
64.0 (210)	
67.1 (220)	
70.1 (230)	
73.2 (240)	
76.2 (260)	
79.2 (260)	
82.3 (270)	

Symbol	Long Boom Length	Remarks
	7.6 m	Boom Base
	6.4 m	Luffing Jib Top
	3.0 m	Tapered Boom
	3.0 m	Insert Boom
	6.1 m	Insert Boom
	9.1 m	Insert Boom
	9.1 m	Special Insert Boom for Luffing
	4.3 m	Relay Jib
	3.0 m	Luffing Insert Jib
	6.1 m	Luffing Insert Jib
	9.1 m	Luffing Insert Jib

Fixed Jib Arrangements



Crane boom length	Jib length m (ft)	Jib arrangement
24.4 m ~ 61.0 m	12.2 (40)	
	18.3 (60)	
	24.4 (80)	
	30.5 (100)	

Symbol	Jib Length	Remarks
	4.6 m	Jib Base
	4.6 m	Jib Top
	3.0 m	Insert Jib
	6.1 m	Insert Jib

BOOM AND JIB ARRANGEMENTS

Luffing Boom Arrangements for Luffing

Boom length m (ft)	Boom arrangement
32.7 (107)	
35.7 (117)	
38.8 (127)	
41.8 (137)	
44.8 (147)	

Boom length m (ft)	Boom arrangement
47.9 (157)	

Symbol	Luffing Boom Length	Remarks
	7.6 m	Boom Base
	0.7 m	Luffing Boom Top
	3.0 m	Insert Boom
	6.1 m	Insert Boom
	9.1 m	Insert Boom
	9.1 m	Special Insert Boom for Luffing

Indicates the most flexible combination of insert luffing booms, which can be modified to form all shorter luffing boom arrangements.

Luffing Boom Arrangements for Crane

Boom length m (ft)	Boom arrangement
14.4 (47)	
17.4 (57)	
20.5 (67)	
23.5 (77)	
26.6 (87)	
29.6 (97)	
32.7 (107)	
35.7 (117)	

Boom length m (ft)	Boom arrangement
38.8 (127)	
41.8 (137)	
44.8 (147)	
47.9 (157)	

Symbol	Boom Length	Remarks
	7.6 m	Boom Base
	0.7 m	Luffing Boom Top
	3.0 m	Insert Boom
	6.1 m	Insert Boom
	9.1 m	Insert Boom
	9.1 m	Special Insert Boom for Luffing

Indicates the most flexible combination of insert luffing booms, which can be modified to form all shorter luffing boom arrangements.

Luffing Jib Arrangements

Jib length m (ft)	Jib arrangement
22.9 (75)	
25.9 (85)	
29.0 (95)	
32.0 (105)	
35.1 (115)	
38.1 (125)	
41.1 (135)	

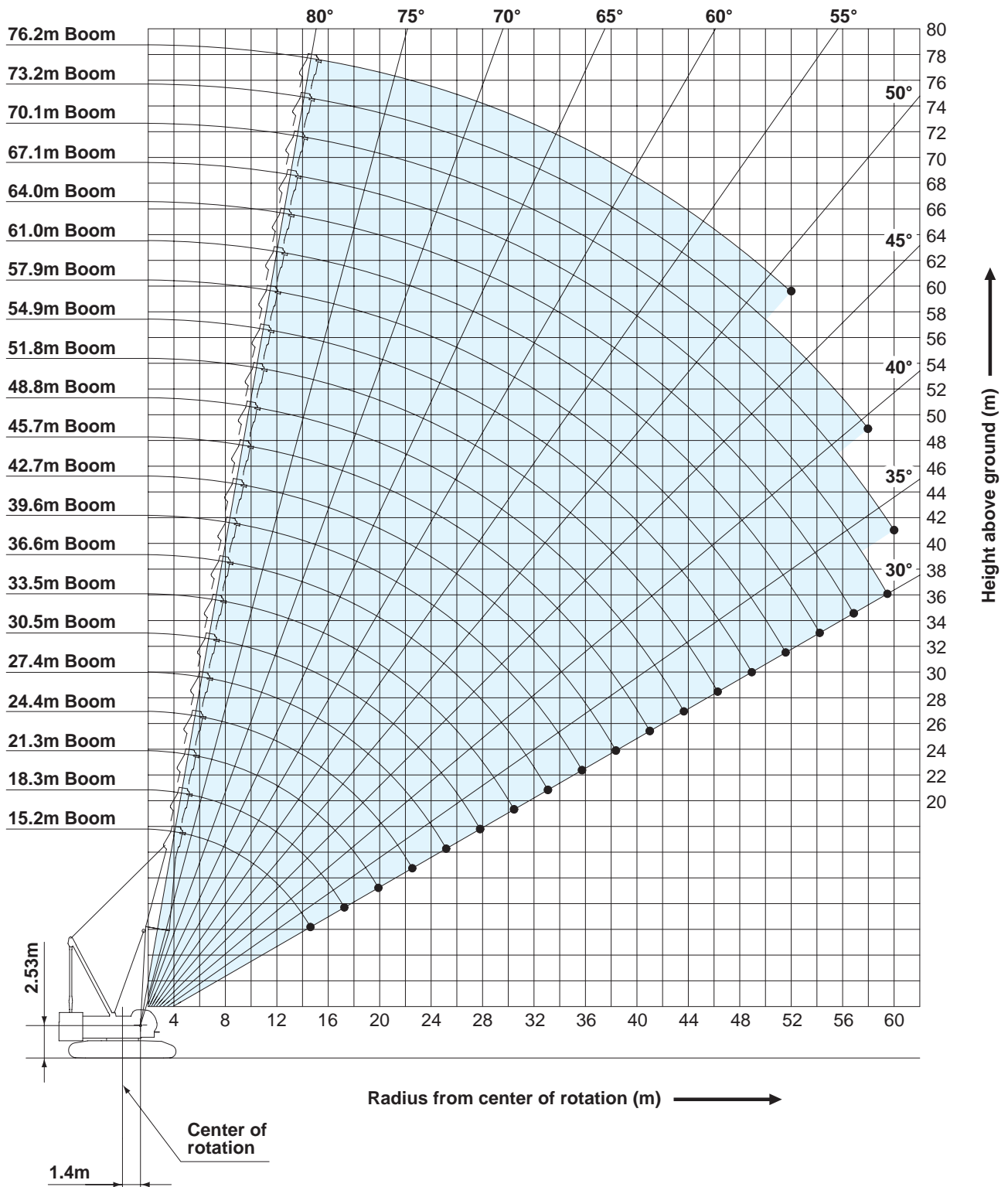
Jib length m (ft)	Jib arrangement
44.2 (145)	
47.2 (155)	
50.3 (165)	
53.3 (175)	

Symbol	Boom Length	Remarks
	6.1 m	Luffing Jib Base
	6.4 m	Luffing Jib Top
	4.3 m	Relay Jib
	3.0 m	Luffing Insert Jib
	6.1 m	Luffing Insert Jib
	9.1 m	Luffing Insert Jib

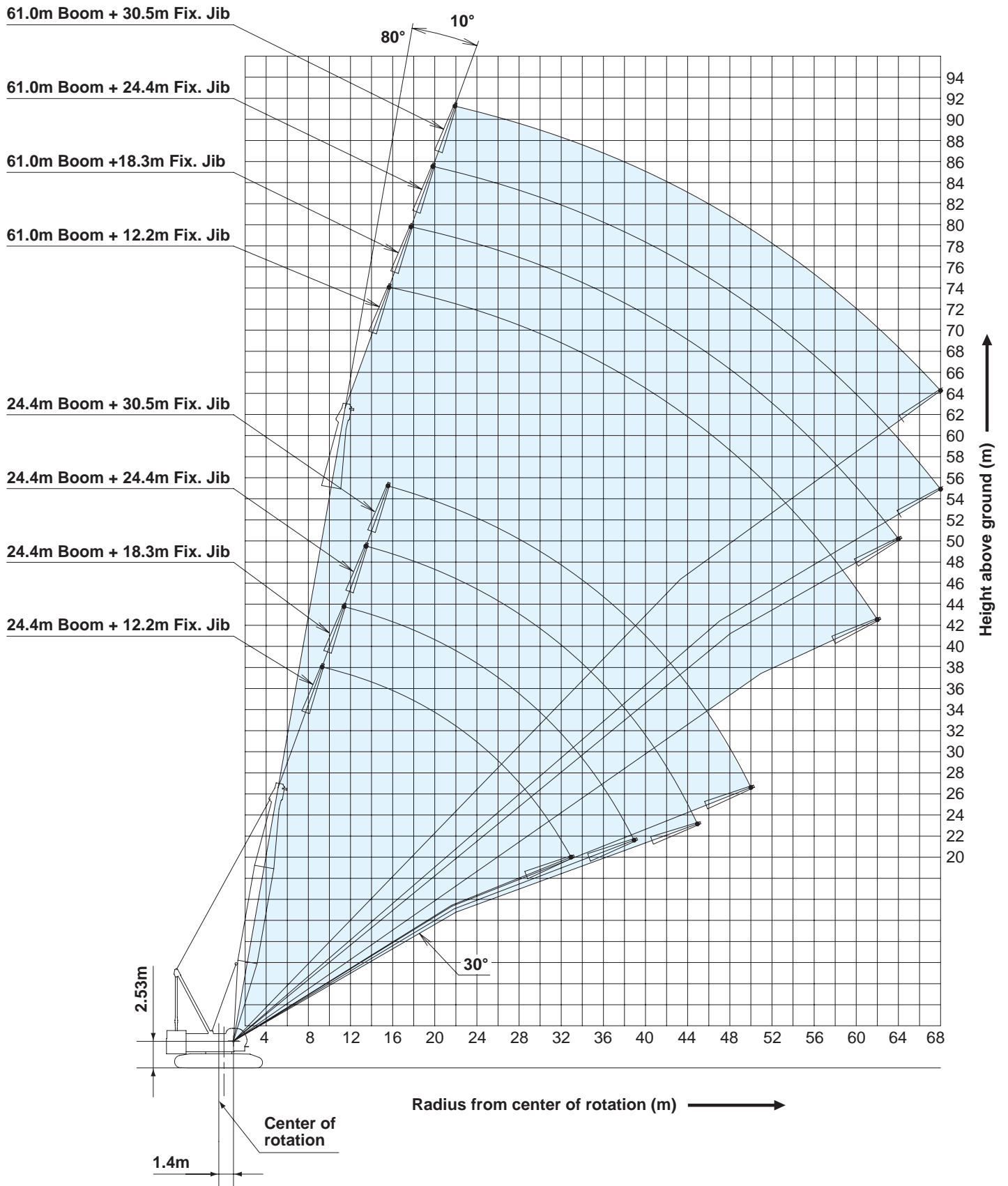
Indicates the most flexible combination of insert luffing jibs, which can be modified to form all shorter luffing jib arrangements.

WORKING RANGES

Crane Boom

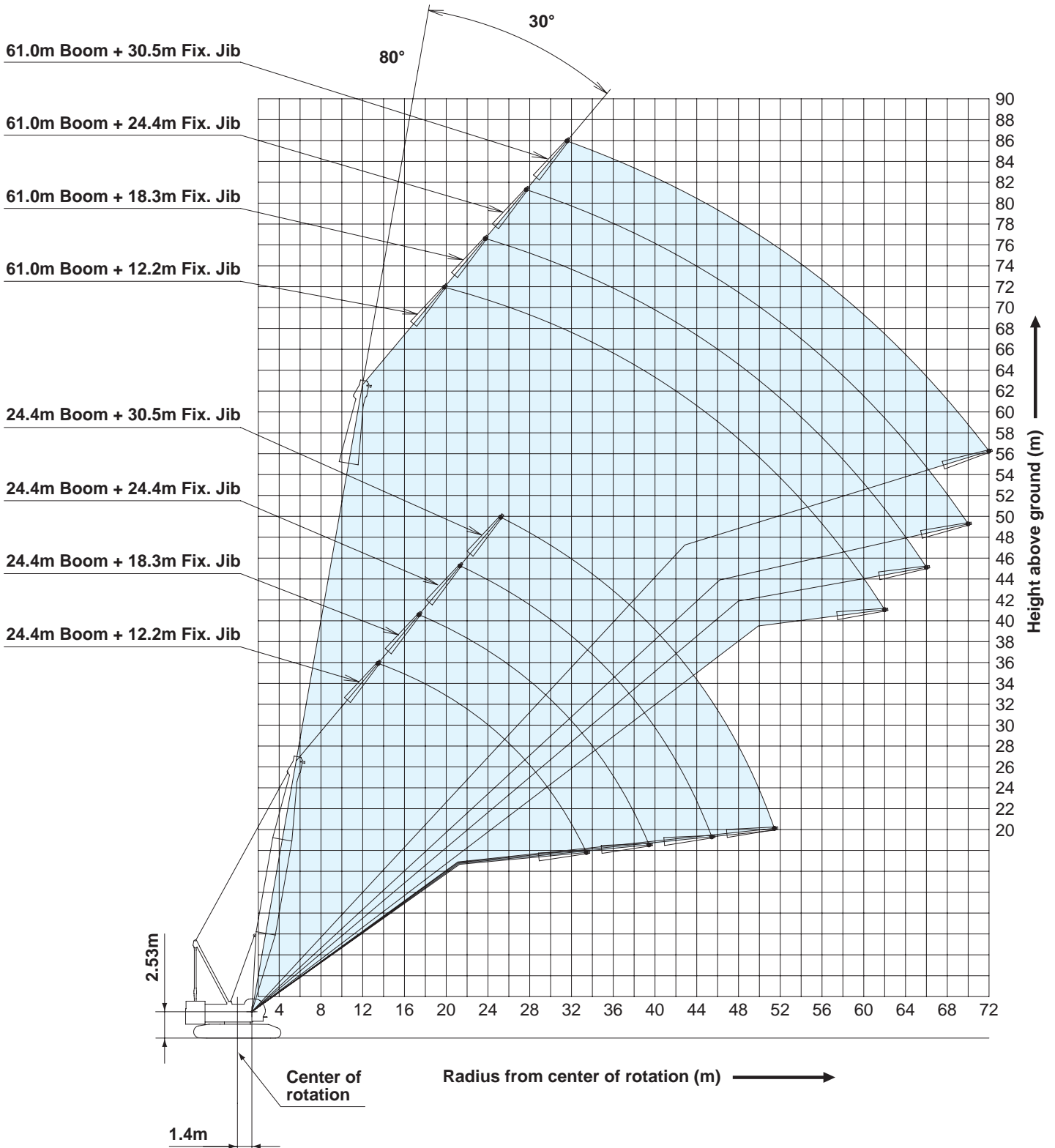


Fixed Jib 10°

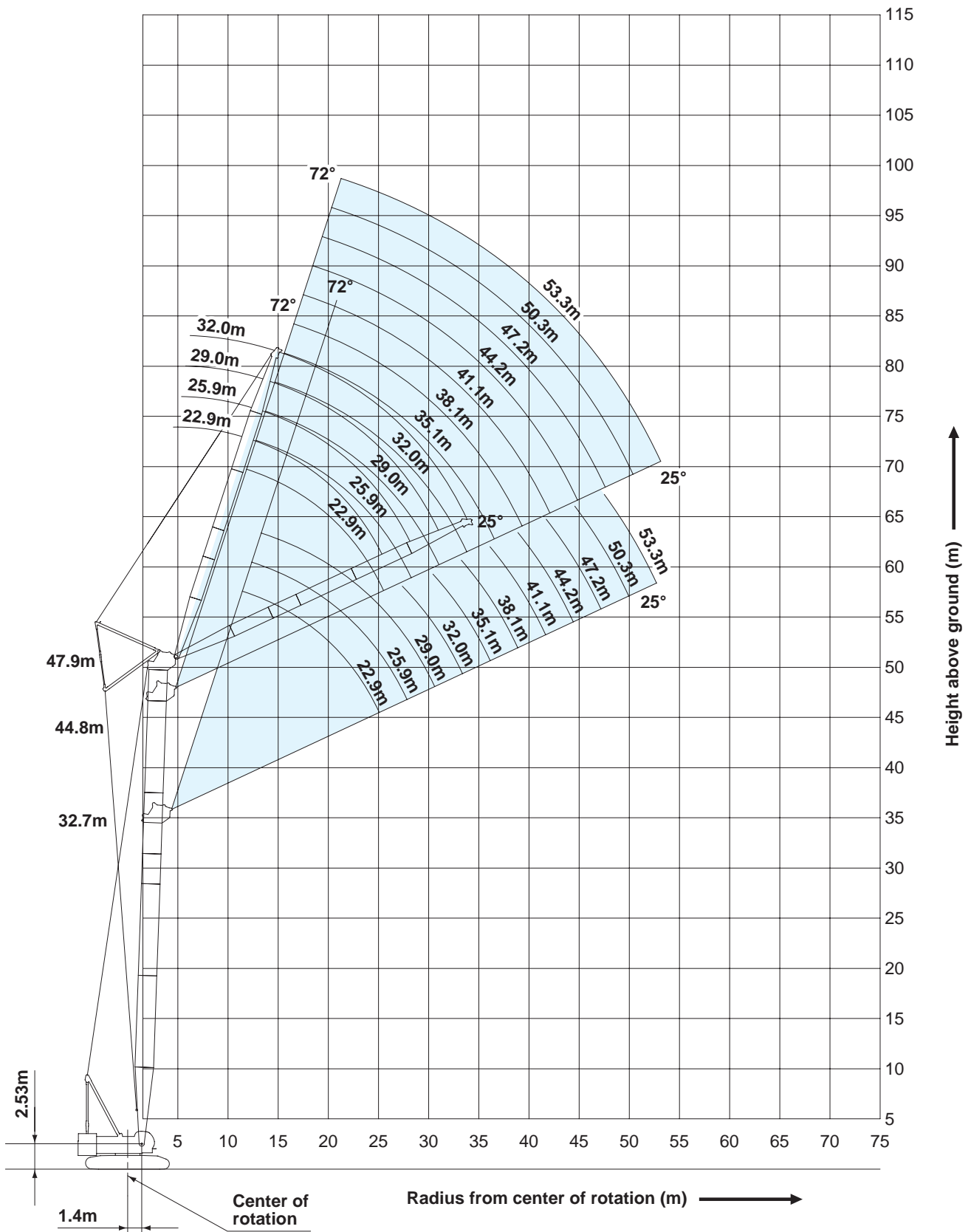


WORKING RANGES

Fixed Jib 30°

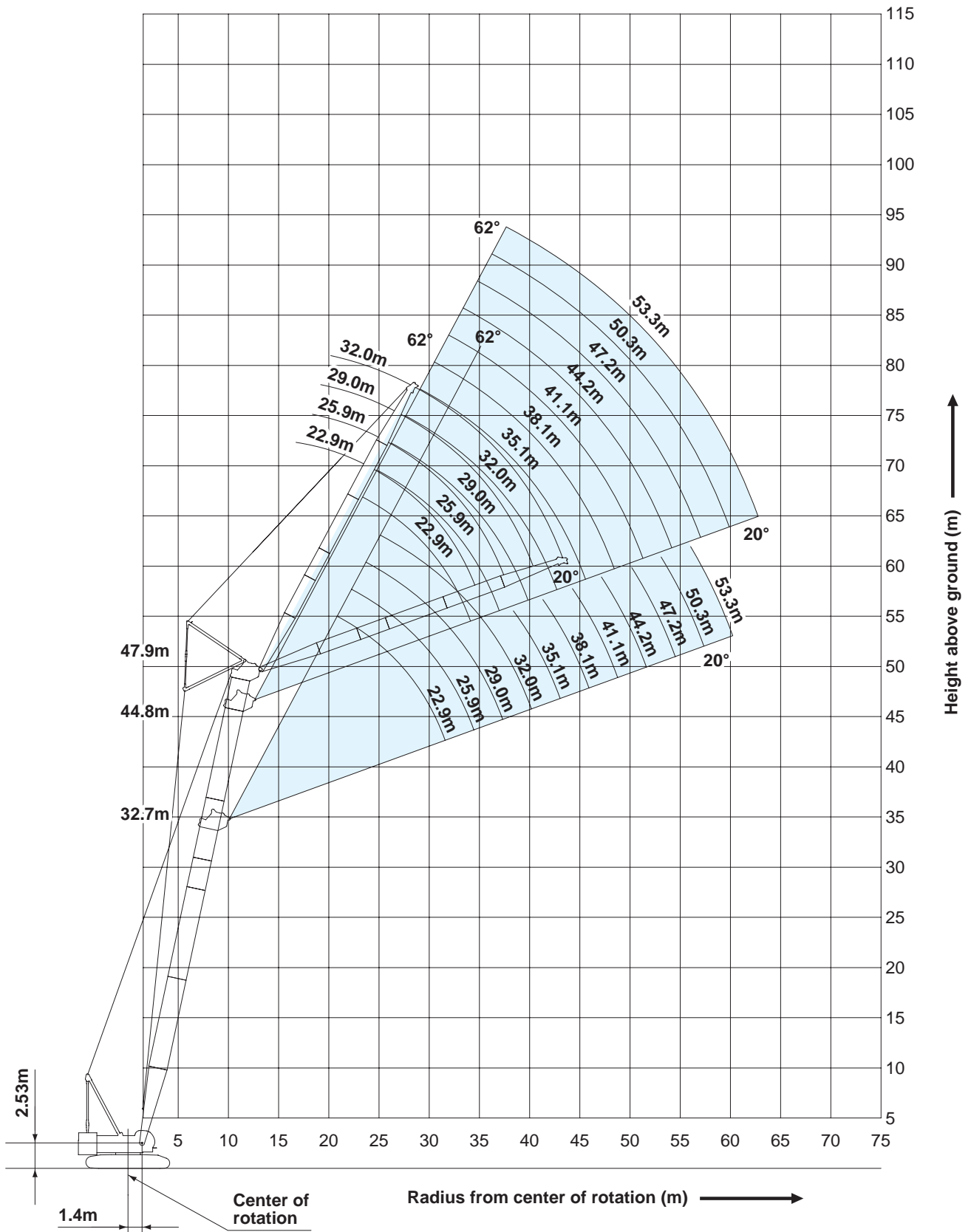


Luffing Jib 72°

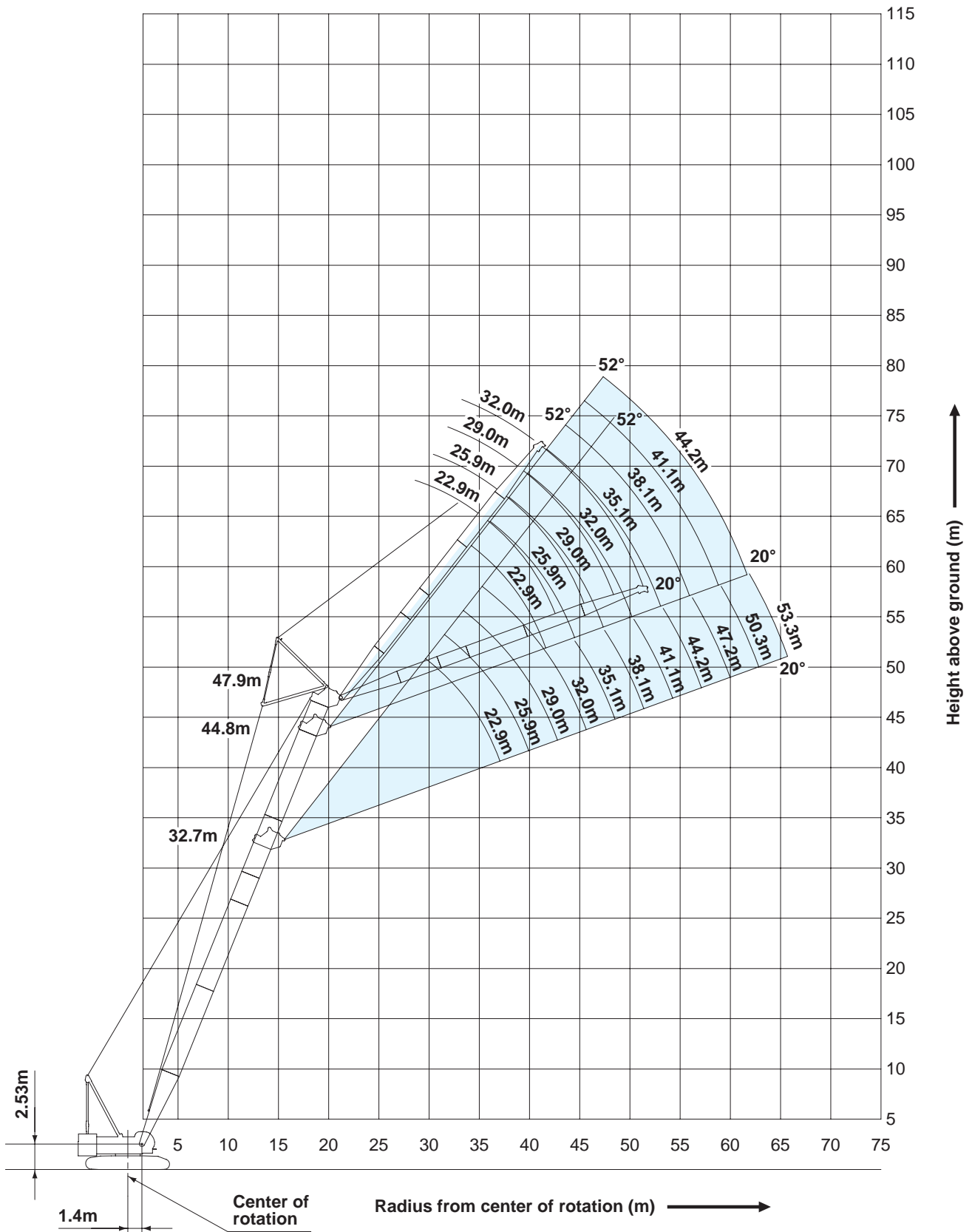


WORKING RANGES

Luffing Jib 62°



Luffing Jib 52°



- Ratings according to EN13000.
- Operating radius is the horizontal distance from centerline of rotation to a vertical line through the center of gravity of the load.
- Deduct weight of hook block (s), slings and all other load handling accessories from main boom ratings shown.
- Ratings shown are based on freely suspended loads and make no allowance for such factors as wind effect on lifted load, ground conditions, out-of-level, operating speeds or any other condition that could be detrimental to the safe operation of this equipment.
The operator, therefore, has the responsibility to judge the existing conditions and reduce lifted loads and operating speeds accordingly.
- Ratings are for operation on a firm and level surface, up to 1 % gradient.
- At radii and boom lengths where no ratings are shown on chart, operation is not intended nor approved.
- Boom inserts and guy lines must be arranged as shown in the "operator's manual".
- Boom hoist reeving is 12 part line.
- Gantry must be in raised position for all conditions.
- Boom backstops are required for all boom lengths.
- The boom should be erected over the front of the crawlers, not laterally.
- When erecting and lowering the boom length of 73.2 m (240 ft) or over, the blocks for erection must be placed at the end of the crawlers.
- Ratings inside of boxes are limited by strength of materials.
- The minimum rated load is 2.0 (ton).

(Main boom)

- The total load that can be lifted is the value for weight of hook block, slings, and all other load handling accessories deducted from main boom ratings shown.

(Main boom with auxiliary sheave frame)

- The total load that can be lifted is the value for weight of main hook block, slings, and all other load handling accessories deducted from main boom with auxiliary sheave ratings shown.

(Auxiliary sheave)

- The total load that can be lifted is the value for weight of jib hook block, slings, and all other load handling accessories deducted from auxiliary sheave ratings shown.
- Boom lengths for auxiliary sheave mounting are 15.2 m to 73.2 m.

(Main boom with fixed jib)

- The total load that can be lifted is the value for weight of main hook block, slings, and all other load handling accessories deducted from main boom with fixed jib ratings shown.
- Boom lengths for fixed jib mounting are 24.4 m to 61.0 m.
- Only 35 t and 70 t hook block can be used for main hook.

(Fixed jib)

- The total load that can be lifted is the value for weight of jib hook block, slings, and all other load handling accessories deducted from fixed jib ratings shown.
- Boom lengths for fixed jib mounting are 24.4 m to 61.0 m.
- Only 35 t and 70 t hook block can be used for main hook.
- One part of line on hook is not allowed to use for 12.2 m jib length with offset angle 10 degrees.

Main hoist loads

No. of Parts of Line	1	2	3	4	5
Maximum Loads (kN)	132	265	397	530	662
Maximum Loads (t)	13.5	27.0	40.5	54.0	67.5

No. of Parts of Line	6	7	8	9	10
Maximum Loads (kN)	794	927	1,059	1,192	1,324
Maximum Loads (t)	81.0	94.5	108.0	121.5	135.0

Auxiliary hoist loads

No. of Parts of Line	1	2
Maximum Loads (kN)	132	265
Maximum Loads (t)	13.5	27.0

Weight of hook block				
Hook Block	135 t	70 t	35 t	13.5 t Ball Hook
Weight (t)	1.7	1.2	0.9	0.45

Operation of this equipment in excess of rated loads or disregard of instruction voids the warranty.

LIFTING CAPACITIES



Crane Boom Lifting Capacities

Counterweight: 55.0 t
Carbody Weight: 10.8 t

Unit: metric ton

Working radius (m)	Boom Length (m)													Boom Length (m)	Working radius (m)	
		15.2	18.3	21.3	24.4	27.4	30.5	33.5	36.6	39.6	42.7	45.7	48.8	51.8		
4.5	4.5m/135.0															4.5
5.0	131.1	5.1m/128.4	5.6m/117.2													5.0
6.0	110.4	110.1	109.6	6.1m/107.8	6.7m/95.1											6.0
7.0	95.1	94.8	93.3	91.1	89.3	7.2m/84.2	7.7m/75.3									7.0
8.0	79.5	79.9	79.1	77.4	75.9	74.6	72.4	8.2m/67.8	8.8m/61.7							8.0
9.0	67.7	68.8	68.5	67.2	66.0	64.9	62.5	61.5	60.0	9.3m/56.3	9.8m/51.8					9.0
10.0	58.4	59.0	59.0	58.8	58.3	57.4	56.5	55.0	53.6	52.2	50.9	10.4m/47.8	10.9m/44.2			10.0
12.0	44.3	45.7	45.6	45.4	45.2	45.2	45.1	44.9	44.1	43.0	42.0	41.0	40.0			12.0
14.0	33.5	37.1	37.0	36.8	36.6	36.5	36.5	36.3	36.2	36.1	35.6	34.7	33.9			14.0
16.0	14.8m/29.3	30.0	31.0	30.8	30.6	30.5	30.4	30.2	30.1	30.0	29.9	29.8	29.3			16.0
18.0		17.5m/24.8	26.6	26.4	26.2	26.1	26.0	25.8	25.7	25.6	25.4	25.3	25.2			18.0
20.0			21.7	23.0	22.8	22.7	22.6	22.4	22.3	22.2	22.0	21.9	21.7			20.0
22.0			20.1m/21.3	19.9	20.1	20.0	19.9	19.7	19.6	19.5	19.3	19.2	19.0			22.0
24.0				22.8m/18.5	18.0	17.9	17.7	17.5	17.4	17.3	17.1	17.0	16.8			24.0
26.0					25.4m/16.0	16.1	16.0	15.7	15.6	15.5	15.3	15.2	15.0			26.0
28.0						14.2	14.5	14.2	14.1	13.9	13.8	13.6	13.5			28.0
30.0						28.1m/14.1	13.2	12.9	12.8	12.7	12.5	12.3	12.2			30.0
32.0							30.7m/12.5	11.8	11.7	11.5	11.4	11.2	11.1			32.0
34.0								33.3m/10.9	10.8	10.6	10.4	10.3	10.1			34.0
36.0									9.7	9.8	9.6	9.4	9.2			36.0
38.0										8.9	8.8	8.7	8.5			38.0
40.0										38.6m/8.6	8.1	8.0	7.8			40.0
42.0											41.2m/7.5	7.4	7.2			42.0
44.0												43.9m/6.5	6.7			44.0
46.0													5.9			46.0
48.0													46.5m/5.7			48.0
Reeves	10	10	9	8	8	7	6	6	5	5	4	4	4	4	4	Reeves

Working radius (m)	Boom Length (m)													Boom Length (m)	Working radius (m)	
		54.9	57.9	61.0	64.0	67.1	70.1	73.2	76.2							
10.0	11.4m/40.1	11.9m/38.4														10.0
12.0	39.1	38.2	12.5m/35.8	13.0m/33.4	13.5m/26.7											12.0
14.0	33.2	32.5	31.7	30.9	26.7	14.1m/26.7	14.6m/24.4	15.1m/20.4								14.0
16.0	28.7	28.1	27.4	26.7	26.3	25.7	22.7	19.4								16.0
18.0	25.1	24.6	24.0	23.4	23.0	22.5	20.6	17.5								18.0
20.0	21.6	21.5	21.2	20.7	20.4	19.9	18.8	15.8								20.0
22.0	18.9	18.8	18.6	18.4	18.1	17.7	17.1	14.3								22.0
24.0	16.7	16.6	16.4	16.2	16.2	15.8	15.4	13.0								24.0
26.0	14.9	14.7	14.6	14.4	14.4	14.2	13.8	11.8								26.0
28.0	13.4	13.2	13.1	12.9	12.8	12.7	12.4	10.7								28.0
30.0	12.1	11.9	11.7	11.6	11.5	11.4	11.2	9.7								30.0
32.0	10.9	10.8	10.6	10.4	10.4	10.2	10.0	8.8								32.0
34.0	10.0	9.8	9.6	9.4	9.4	9.2	9.1	8.0								34.0
36.0	9.1	8.9	8.8	8.6	8.5	8.4	8.2	7.2								36.0
38.0	8.4	8.2	8.0	7.8	7.8	7.6	7.4	6.5								38.0
40.0	7.7	7.5	7.3	7.1	7.1	6.9	6.7	5.8								40.0
42.0	7.1	6.9	6.7	6.5	6.5	6.3	6.1	5.2								42.0
44.0	6.5	6.4	6.2	6.0	5.9	5.7	5.5	4.6								44.0
46.0	6.0	5.9	5.7	5.4	5.3	5.2	4.9	4.0								46.0
48.0	5.3	5.4	5.2	4.9	4.9	4.7	4.4	3.5								48.0
50.0	49.2m/4.8	4.7	4.7	4.5	4.4	4.2	4.0	2.9								50.0
52.0		51.8m/4.1	4.2	4.1	4.0	3.8	3.6	2.4								52.0
54.0			3.6	3.6	3.5	3.4	3.2									54.0
56.0			54.4m/3.5	3.0	3.1	3.0	2.8									56.0
58.0				57.1m/2.8	2.6	2.5	2.4									58.0
60.0					59.7m/2.2	2.1										60.0
Reeves	3	3	3	3	2	2	2	2								Reeves

Note: Ratings according to EN13000.

Ratings shown in are determined by the strength of the boom or other structural components.

LIFTING CAPACITIES



Fixed Jib Lifting Capacities (Without Main Hook Block) Jib Offset Angle : 10°

Counterweight: 55.0 t
Carbody Weight: 10.8 t

Unit: metric ton

Boom length (m)	24.4				27.4				30.5				Boom length (m)
Jib length (m)	12.2	18.3	24.4	30.5	12.2	18.3	24.4	30.5	12.2	18.3	24.4	30.5	Jib length (m)
9.0	9.9m/26.8												9.0
10.0	26.8				10.4m/26.8				10.9m/26.8				10.0
12.0	26.7	19.2			26.8	12.5m/19.2			26.8	13.0m/19.2			12.0
14.0	25.8	18.9	14.3m/9.9		26.1	19.0	14.9m/9.9		26.5	19.1	15.4m/9.8		14.0
16.0	24.9	18.3	9.7	16.4m/5.9	25.3	18.5	9.8	16.9m/5.9	25.7	18.7	9.8	17.5m/5.9	16.0
18.0	24.1	17.7	9.5	5.8	24.6	18.0	9.6	5.8	24.9	18.2	9.6	5.9	18.0
20.0	22.9	16.8	9.2	5.6	23.3	17.4	9.4	5.7	23.2	17.7	9.4	5.7	20.0
22.0	20.8	15.2	8.8	5.3	20.6	16.1	9.0	5.4	20.4	17.0	9.2	5.6	22.0
24.0	18.6	13.9	8.4	5.0	18.4	14.8	8.6	5.2	18.2	15.6	8.8	5.3	24.0
26.0	16.8	12.8	8.0	4.8	16.5	13.6	8.2	4.9	16.4	14.4	8.4	5.0	26.0
28.0	15.2	11.9	7.7	4.5	15.0	12.6	7.9	4.7	14.9	13.3	8.1	4.8	28.0
30.0	13.9	11.1	7.4	4.3	13.7	11.8	7.6	4.5	13.5	12.4	7.8	4.6	30.0
32.0	12.8	10.4	7.2	4.2	12.6	11.0	7.4	4.3	12.4	11.7	7.6	4.4	32.0
34.0	11.2	9.7	6.9	4.0	11.6	10.4	7.1	4.1	11.4	11.0	7.3	4.2	34.0
36.0		9.2	6.7	3.8	10.4	9.8	6.9	3.9	10.6	10.4	7.1	4.1	36.0
38.0		8.7	6.5	3.7		9.3	6.7	3.8	9.7	9.8	6.9	3.9	38.0
40.0		8.3	6.3	3.5		8.8	6.5	3.7	8.4	9.3	6.7	3.8	40.0
42.0			6.2	3.4		8.4	6.4	3.5		8.7	6.5	3.7	42.0
44.0			6.1	3.3			6.2	3.4		7.8	6.4	3.5	44.0
46.0			6.0	3.2			6.1	3.3			6.2	3.4	46.0
48.0				3.1			6.0	3.2			6.1	3.3	48.0
50.0				3.1				3.1			6.0	3.2	50.0
52.0								3.1				3.2	52.0
54.0								3.0				3.1	54.0
56.0												3.0	56.0
Reeves	2	2	1	1	2	2	1	1	2	2	1	1	Reeves

Boom Length (m)	33.5				36.6				39.6				Boom Length (m)
Jib length (m)	12.2	18.3	24.4	30.5	12.2	18.3	24.4	30.5	12.2	18.3	24.4	30.5	Jib length (m)
10.0	11.5m/26.8												10.0
12.0	26.8	13.5m/19.2			26.8				12.5m/26.8				12.0
14.0	26.8	19.1	15.9m/9.9		26.8	14.1m/19.2			26.8	14.6m/19.2			14.0
16.0	26.0	18.8	9.9		26.3	18.9	16.4m/9.9		26.5	19.0	17.0m/9.9		16.0
18.0	25.3	18.4	9.7	5.9	25.6	18.6	9.7	18.5m/5.9	25.8	18.7	9.8	19.1m/5.9	18.0
20.0	23.0	17.9	9.5	5.7	22.8	18.1	9.6	5.8	22.7	18.3	9.6	5.8	20.0
22.0	20.3	17.4	9.3	5.6	20.1	17.6	9.4	5.7	20.0	17.8	9.5	5.7	22.0
24.0	18.1	16.4	9.0	5.4	17.9	17.2	9.1	5.5	17.7	17.4	9.3	5.6	24.0
26.0	16.2	15.1	8.6	5.1	16.0	15.9	8.8	5.3	15.9	16.1	9.0	5.4	26.0
28.0	14.7	14.0	8.3	4.9	14.5	14.7	8.5	5.0	14.3	14.6	8.7	5.1	28.0
30.0	13.4	13.1	8.0	4.7	13.2	13.4	8.2	4.8	13.0	13.2	8.4	4.9	30.0
32.0	12.3	12.3	7.7	4.5	12.0	12.3	7.9	4.6	11.9	12.1	8.1	4.7	32.0
34.0	11.3	11.5	7.5	4.3	11.1	11.3	7.7	4.4	10.9	11.1	7.8	4.6	34.0
36.0	10.4	10.6	7.3	4.2	10.2	10.4	7.4	4.3	10.0	10.2	7.6	4.4	36.0
38.0	9.7	9.8	7.1	4.0	9.4	9.6	7.2	4.1	9.3	9.5	7.4	4.2	38.0
40.0	8.9	9.1	6.9	3.9	8.7	8.9	7.0	4.0	8.6	8.8	7.2	4.1	40.0
42.0	7.8	8.5	6.7	3.8	8.1	8.3	6.9	3.9	8.0	8.1	7.0	4.0	42.0
44.0		8.0	6.5	3.6	7.1	7.8	6.7	3.7	7.4	7.6	6.8	3.8	44.0
46.0		7.3	6.4	3.5		7.3	6.5	3.6	6.5	7.1	6.7	3.7	46.0
48.0		6.4	6.3	3.4		6.6	6.4	3.5		6.6	6.5	3.6	48.0
50.0			6.1	3.3		5.8	6.3	3.4		6.0	6.4	3.5	50.0
52.0			6.0	3.2			6.2	3.3		5.4	6.0	3.4	52.0
54.0			5.4	3.2			5.6	3.3			5.7	3.3	54.0
56.0				3.1			5.0	3.2			5.1	3.3	56.0
58.0				3.0				3.1			4.5	3.2	58.0
60.0				2.9				3.1				3.1	60.0
62.0								3.0				3.1	62.0
64.0												3.0	64.0
Reeves	2	2	1	1	2	2	1	1	2	2	1	1	Reeves

Note: Ratings according to EN13000.

Ratings shown in are determined by the strength of the boom or other structural components.

12.2 m jib length with offset angle 10 degrees, one part of line on hook is not allowed to use.



Fixed Jib Lifting Capacities (Without Main Hook Block)

Jib Offset Angle : 10°

Counterweight: 55.0 t
Carbody Weight: 10.8 t

Unit: metric ton

Boom Length (m)	42.7				45.7				48.8				Boom length (m)
Jib length (m)	12.2	18.3	24.4	30.5	12.2	18.3	24.4	30.5	12.2	18.3	24.4	30.5	Jib length (m)
12.0	13.0m/26.8				13.6m/26.8								12.0
14.0	26.8	15.1m/19.2			26.8	15.7m/19.1			14.1m/26.8				14.0
16.0	26.8	19.1	17.5m/9.9		26.8	19.1			26.8	16.2m/19.2			16.0
18.0	26.0	18.8	9.8	19.6m/5.9	25.8	18.9	9.9		25.7	18.9	18.6m/9.9		18.0
20.0	22.5	18.4	9.7	5.9	22.4	18.6	9.7	20.1m/5.9	22.2	18.7	9.8	20.6m/5.9	20.0
22.0	19.8	18.0	9.5	5.7	19.6	18.1	9.6	5.8	19.5	18.3	9.6	5.8	22.0
24.0	17.6	17.6	9.4	5.6	17.4	17.6	9.4	5.7	17.2	17.5	9.5	5.7	24.0
26.0	15.7	16.0	9.1	5.5	15.5	15.8	9.3	5.5	15.4	15.7	9.3	5.6	26.0
28.0	14.2	14.4	8.8	5.2	14.0	14.2	9.0	5.3	13.8	14.1	9.1	5.4	28.0
30.0	12.9	13.1	8.5	5.0	12.7	12.9	8.7	5.1	12.5	12.8	8.8	5.2	30.0
32.0	11.7	11.9	8.2	4.8	11.5	11.7	8.4	4.9	11.4	11.6	8.5	5.0	32.0
34.0	10.7	10.9	8.0	4.7	10.5	10.7	8.1	4.7	10.4	10.6	8.3	4.8	34.0
36.0	9.9	10.1	7.8	4.5	9.7	9.9	7.9	4.6	9.5	9.7	8.1	4.7	36.0
38.0	9.1	9.3	7.6	4.3	8.9	9.1	7.7	4.4	8.7	8.9	7.8	4.5	38.0
40.0	8.4	8.6	7.4	4.2	8.2	8.4	7.5	4.3	8.0	8.2	7.6	4.4	40.0
42.0	7.8	8.0	7.2	4.1	7.6	7.8	7.3	4.2	7.4	7.6	7.4	4.2	42.0
44.0	7.2	7.4	7.0	3.9	7.0	7.2	7.1	4.0	6.9	7.1	7.3	4.1	44.0
46.0	6.7	6.9	6.8	3.8	6.5	6.7	7.0	3.9	6.4	6.6	6.8	4.0	46.0
48.0	5.9	6.5	6.7	3.7	5.9	6.2	6.5	3.8	5.9	6.1	6.4	3.9	48.0
50.0	5.2	6.0	6.3	3.6	5.3	5.8	6.1	3.7	5.3	5.7	5.9	3.8	50.0
52.0		5.4	5.9	3.5	4.6	5.3	5.7	3.6	4.7	5.2	5.5	3.7	52.0
54.0		4.9	5.5	3.4		4.8	5.3	3.5	4.1	4.8	5.2	3.6	54.0
56.0		4.3	5.1	3.3		4.3	5.0	3.4	3.5	4.3	4.8	3.5	56.0
58.0			4.6	3.3		3.7	4.5	3.3		3.8	4.5	3.4	58.0
60.0			4.1	3.2			4.1	3.3		3.3	4.0	3.3	60.0
62.0				3.1			3.6	3.2			3.6	3.3	62.0
64.0				3.1			3.2	3.1			3.2	3.2	64.0
66.0				3.0				3.1			2.8	3.1	66.0
68.0								2.9				2.9	68.0
70.0								2.5				2.5	70.0
72.0												2.1	72.0
Reeves	2	2	1	1	2	2	1	1	2	2	1	1	Reeves

Boom Length (m)	51.8				54.9				57.9				Boom length (m)
Jib length (m)	12.2	18.3	24.4	30.5	12.2	18.3	24.4	30.5	12.2	18.3	24.4	30.5	Jib length (m)
14.0	14.6m/26.8				15.2m/26.8				15.7m/24.0				14.0
16.0	26.8	16.7m/19.1			26.8	17.2m/19.1			24.0	17.8m/19.1			16.0
18.0	25.6	19.0	19.1m/9.9		25.4	19.0	19.6m/9.8		23.5	19.1			18.0
20.0	22.1	18.8	9.8	21.2m/5.9	21.9	18.8	9.8	21.7m/5.9	21.7	18.9	20.1m/9.9		20.0
22.0	19.3	18.4	9.6	5.8	19.1	18.6	9.7	5.9	19.0	18.7	9.7	22.2m/5.9	22.0
24.0	17.1	17.4	9.5	5.7	16.9	17.2	9.6	5.8	16.7	17.0	9.6	5.8	24.0
26.0	15.2	15.5	9.4	5.6	15.0	15.3	9.4	5.6	14.9	15.2	9.5	5.7	26.0
28.0	13.7	13.9	9.2	5.5	13.5	13.8	9.3	5.5	13.3	13.6	9.3	5.6	28.0
30.0	12.4	12.6	8.9	5.3	12.2	12.4	9.1	5.4	12.0	12.2	9.2	5.5	30.0
32.0	11.2	11.5	8.7	5.1	11.0	11.3	8.8	5.2	10.8	11.1	8.9	5.3	32.0
34.0	10.2	10.4	8.4	4.9	10.0	10.3	8.6	5.0	9.8	10.1	8.7	5.1	34.0
36.0	9.3	9.6	8.2	4.8	9.1	9.4	8.3	4.8	9.0	9.2	8.5	4.9	36.0
38.0	8.6	8.8	8.0	4.6	8.4	8.6	8.1	4.7	8.2	8.4	8.2	4.8	38.0
40.0	7.9	8.1	7.8	4.5	7.7	7.9	7.9	4.5	7.5	7.7	8.0	4.6	40.0
42.0	7.3	7.5	7.6	4.3	7.0	7.3	7.6	4.4	6.9	7.1	7.4	4.5	42.0
44.0	6.7	6.9	7.2	4.2	6.5	6.7	7.0	4.3	6.3	6.5	6.8	4.4	44.0
46.0	6.2	6.4	6.7	4.1	6.0	6.2	6.5	4.2	5.8	6.0	6.3	4.2	46.0
48.0	5.7	5.9	6.2	4.0	5.5	5.7	6.0	4.0	5.3	5.5	5.8	4.1	48.0
50.0	5.2	5.5	5.8	3.9	5.0	5.3	5.6	3.9	4.8	5.1	5.4	4.0	50.0
52.0	4.7	5.1	5.4	3.8	4.5	4.8	5.2	3.8	4.3	4.6	5.0	3.9	52.0
54.0	4.1	4.6	5.0	3.7	4.0	4.4	4.8	3.7	3.8	4.2	4.7	3.8	54.0
56.0	3.6	4.2	4.7	3.6	3.5	4.0	4.5	3.7	3.4	3.8	4.3	3.7	56.0
58.0	3.1	3.7	4.3	3.5	3.0	3.5	4.1	3.6	2.9	3.4	3.9	3.6	58.0
60.0		3.3	3.9	3.4	2.6	3.1	3.7	3.5	2.5	3.0	3.5	3.6	60.0
62.0		2.9	3.5	3.3		2.7	3.3	3.4	2.1	2.6	3.2	3.3	62.0
64.0		2.4	3.1	3.3		2.4	3.0	3.2		2.3	2.8	3.0	64.0
66.0			2.8	3.1			2.6	2.9			2.5	2.7	66.0
68.0			2.4	2.8			2.3	2.6			2.2	2.4	68.0
70.0				2.4				2.3				2.1	70.0
Reeves	2	2	1	1	2	2	1	1	2	2	1	1	Reeves

Note: Ratings according to EN13000.

Ratings shown in are determined by the strength of the boom or other structural components.

12.2 m jib length with offset angle 10 degrees, one part of line on hook is not allowed to use.

LIFTING CAPACITIES



Fixed Jib Lifting Capacities (Without Main Hook Block) Jib Offset Angle : 10°

Counterweight: 55.0 t

Carbody Weight: 10.8 t

Unit: metric ton

Boom Length (m)		61.0										Boom length (m)
Jib length (m)		12.2	18.3	24.4	30.5							Jib length (m)
Working radius (m)	16.0	16.2m/21.2										16.0
	18.0	20.7	18.3m/19.1									18.0
	20.0	20.3	18.9	20.7m/9.9								20.0
	22.0	18.7	18.7	9.8	22.8m/5.9							22.0
	24.0	16.6	16.7	9.6	5.8							24.0
	26.0	14.8	14.9	9.5	5.7							26.0
	28.0	13.2	13.4	9.4	5.6							28.0
	30.0	11.9	12.1	9.3	5.5							30.0
	32.0	10.7	11.0	9.1	5.3							32.0
	34.0	9.7	10.0	8.8	5.2							34.0
	36.0	8.8	9.1	8.6	5.0							36.0
	38.0	8.1	8.3	8.4	4.9							38.0
	40.0	7.4	7.6	7.9	4.7							40.0
	42.0	6.7	7.0	7.3	4.6							42.0
	44.0	6.2	6.4	6.7	4.4							44.0
	46.0	5.6	5.9	6.2	4.3							46.0
	48.0	5.1	5.3	5.7	4.2							48.0
	50.0	4.6	4.9	5.3	4.1							50.0
	52.0	4.1	4.4	4.9	4.0							52.0
	54.0	3.7	4.0	4.5	3.9							54.0
56.0	3.3	3.6	4.1	3.8							56.0	
58.0	2.8	3.2	3.7	3.7							58.0	
60.0	2.4	2.8	3.3	3.5							60.0	
62.0	2.1	2.5	3.0	3.1							62.0	
64.0		2.1	2.7	2.8							64.0	
66.0			2.3	2.5							66.0	
68.0			2.0	2.2							68.0	
Reeves	2	2	1	1							Reeves	

Note: Ratings according to EN13000.

Ratings shown in are determined by the strength of the boom or other structural components.
12.2 m jib length with offset angle 10 degrees, one part of line on hook is not allowed to use.



Fixed Jib Lifting Capacities (Without Main Hook Block)

Jib Offset Angle : 30°

Counterweight: 55.0 t
Carbody Weight: 10.8 t

Unit: metric ton

Boom Length (m)	24.4				27.4				30.5				Boom length (m)
Jib length (m)	12.2	18.3	24.4	30.5	12.2	18.3	24.4	30.5	12.2	18.3	24.4	30.5	Jib length (m)
12.0	13.5m/18.2												12.0
14.0	17.8				14.1m/18.2				14.6m/18.2				14.0
16.0	16.4	17.5m/12.4			16.9				17.3				16.0
18.0	15.2	12.1			15.7	12.4			16.2	18.5m/12.5			18.0
20.0	14.3	11.2	21.4m/7.4		14.7	11.5	21.9m/7.5		15.2	11.8			20.0
22.0	13.4	10.5	7.4		13.9	10.8	7.5		14.3	11.1	22.4m/7.5		22.0
24.0	12.7	9.8	7.2	25.3m/4.1	13.2	10.1	7.3	25.8m/4.0	13.6	10.4	7.3		24.0
26.0	12.1	9.2	7.0	4.0	12.5	9.6	7.1	4.0	13.0	9.9	7.1	26.3m/4.1	26.0
28.0	11.6	8.8	6.8	3.8	12.0	9.1	6.9	3.9	12.4	9.4	6.9	3.9	28.0
30.0	11.1	8.3	6.5	3.7	11.5	8.6	6.7	3.8	11.9	8.9	6.8	3.8	30.0
32.0	10.8	7.9	6.2	3.6	11.1	8.2	6.4	3.6	11.5	8.5	6.5	3.7	32.0
34.0	10.5	7.6	5.9	3.5	10.8	7.9	6.1	3.5	11.1	8.2	6.2	3.6	34.0
36.0		7.3	5.6	3.4	10.6	7.6	5.8	3.4	10.7	7.9	6.0	3.5	36.0
38.0		7.1	5.4	3.3	9.2	7.4	5.6	3.3	9.9	7.6	5.7	3.4	38.0
40.0		7.0	5.2	3.2		7.1	5.4	3.2	8.8	7.4	5.5	3.3	40.0
42.0			5.0	3.1		7.0	5.2	3.2		7.2	5.3	3.2	42.0
44.0			4.9	3.1		6.9	5.0	3.1		7.0	5.2	3.2	44.0
46.0			4.8	3.0			4.9	3.0		6.9	5.0	3.1	46.0
48.0				3.0			4.8	3.0			4.9	3.0	48.0
50.0				2.9			4.7	3.0			4.8	3.0	50.0
52.0				2.9				2.9			4.7	3.0	52.0
54.0								2.9				2.9	54.0
56.0								2.9				2.9	56.0
58.0												2.9	58.0
Reeves	2	1	1	1	2	1	1	1	2	1	1	1	Reeves

Boom Length (m)	33.5				36.6				39.6				Boom length (m)
Jib length (m)	12.2	18.3	24.4	30.5	12.2	18.3	24.4	30.5	12.2	18.3	24.4	30.5	Jib length (m)
14.0	15.1m/18.2				15.6m/18.2								14.0
16.0	17.7				18.0				16.2m/18.3				16.0
18.0	16.5	19.0m/12.5			16.9	19.6m/12.4			17.2				18.0
20.0	15.6	12.1			16.0	12.3			16.3	20.1m/12.5			20.0
22.0	14.7	11.3	23.0m/7.5		15.1	11.6	23.5m/7.5		15.5	11.8			22.0
24.0	14.0	10.7	7.4		14.4	10.9	7.5		14.7	11.2	7.5		24.0
26.0	13.4	10.1	7.2	26.9m/4.1	13.7	10.4	7.3	27.4m/4.1	14.1	10.6	7.3	27.9m/4.0	26.0
28.0	12.8	9.6	7.0	4.0	13.2	9.9	7.1	4.0	13.5	10.1	7.1	4.0	28.0
30.0	12.3	9.2	6.8	3.8	12.7	9.4	6.9	3.9	13.0	9.7	7.0	3.9	30.0
32.0	11.9	8.8	6.7	3.7	12.2	9.0	6.8	3.8	12.2	9.3	6.8	3.8	32.0
34.0	11.5	8.4	6.4	3.6	11.3	8.7	6.6	3.7	11.1	8.9	6.7	3.7	34.0
36.0	10.6	8.1	6.1	3.5	10.4	8.3	6.3	3.6	10.2	8.6	6.4	3.6	36.0
38.0	9.8	7.8	5.9	3.4	9.6	8.1	6.1	3.5	9.4	8.3	6.2	3.5	38.0
40.0	9.1	7.6	5.7	3.3	8.9	7.8	5.8	3.4	8.7	8.0	6.0	3.4	40.0
42.0	8.2	7.4	5.5	3.3	8.2	7.6	5.6	3.3	8.1	7.8	5.8	3.4	42.0
44.0		7.2	5.3	3.2	7.5	7.4	5.5	3.2	7.5	7.6	5.6	3.3	44.0
46.0		7.0	5.2	3.1		7.2	5.3	3.2	6.8	7.4	5.4	3.2	46.0
48.0		6.9	5.0	3.1		7.0	5.2	3.1	6.0	6.9	5.3	3.2	48.0
50.0			4.9	3.0		6.4	5.0	3.1		6.4	5.1	3.1	50.0
52.0			4.8	3.0		5.5	4.9	3.0		5.9	5.0	3.1	52.0
54.0			4.7	2.9			4.8	3.0		5.1	4.9	3.0	54.0
56.0				2.9			4.8	2.9			4.8	3.0	56.0
58.0				2.9			4.7	2.9			4.8	2.9	58.0
60.0				2.9				2.9			4.3	2.9	60.0
62.0								2.9				2.9	62.0
64.0								2.9				2.9	64.0
66.0												2.9	66.0
Reeves	2	1	1	1	2	1	1	1	2	1	1	1	Reeves

Note: Ratings according to EN13000.

Ratings shown in are determined by the strength of the boom or other structural components.

LIFTING CAPACITIES



Fixed Jib Lifting Capacities (Without Main Hook Block) Jib Offset Angle : 30°

Counterweight: 55.0 t
Carbody Weight: 10.8 t

Unit: metric ton

Boom Length (m)		42.7				45.7				48.8				Boom length (m)
Jib length (m)		12.2	18.3	24.4	30.5	12.2	18.3	24.4	30.5	12.2	18.3	24.4	30.5	Jib length (m)
Working radius (m)	16.0	16.7m/18.2				17.2m/18.2				17.8m/18.1				16.0
	18.0	17.5				17.8				18.1				18.0
	20.0	16.6	20.6m/12.5			16.9	21.2m/12.5			17.2	21.7m/12.5			20.0
	22.0	15.8	12.0			16.1	12.2			16.4	12.4			22.0
	24.0	15.1	11.4	24.5m/7.5		15.4	11.6	25.1m/7.5		15.7	11.8	25.6m/7.6		24.0
	26.0	14.4	10.8	7.4		14.7	11.0	7.4		15.0	11.2	7.5		26.0
	28.0	13.8	10.3	7.2	28.5m/4.0	14.2	10.5	7.3	29.0m/4.1	14.3	10.7	7.3	29.5m/4.0	28.0
	30.0	13.2	9.9	7.0	3.9	13.0	10.1	7.1	4.0	12.9	10.3	7.2	4.0	30.0
	32.0	12.0	9.5	6.9	3.8	11.9	9.7	7.0	3.9	11.7	9.9	7.0	3.9	32.0
	34.0	11.0	9.1	6.8	3.7	10.8	9.3	6.8	3.8	10.7	9.5	6.9	3.8	34.0
	36.0	10.1	8.8	6.6	3.6	9.9	9.0	6.7	3.7	9.8	9.2	6.7	3.7	36.0
	38.0	9.3	8.5	6.3	3.6	9.1	8.7	6.5	3.6	9.0	8.9	6.6	3.6	38.0
	40.0	8.6	8.2	6.1	3.5	8.4	8.4	6.3	3.5	8.3	8.6	6.4	3.5	40.0
	42.0	8.0	8.0	5.9	3.4	7.8	8.2	6.1	3.4	7.6	8.1	6.2	3.5	42.0
	44.0	7.4	7.7	5.7	3.3	7.2	7.6	5.9	3.4	7.1	7.5	6.0	3.4	44.0
	46.0	6.9	7.2	5.6	3.3	6.7	7.1	5.7	3.3	6.5	6.9	5.8	3.3	46.0
	48.0	6.2	6.7	5.4	3.2	6.2	6.6	5.5	3.2	6.0	6.4	5.6	3.3	48.0
	50.0	5.4	6.3	5.3	3.1	5.5	6.1	5.4	3.2	5.5	6.0	5.5	3.2	50.0
	52.0		5.9	5.1	3.1	4.8	5.7	5.3	3.1	4.9	5.6	5.4	3.2	52.0
	54.0		5.4	5.0	3.0		5.3	5.1	3.1	4.3	5.2	5.2	3.1	54.0
	56.0		4.7	4.9	3.0		4.8	5.0	3.0	3.7	4.8	5.1	3.1	56.0
58.0			4.8	3.0		4.2	4.9	3.0		4.3	4.7	3.0	58.0	
60.0			4.5	2.9			4.5	3.0		3.7	4.4	3.0	60.0	
62.0			4.0	2.9			4.0	2.9		3.2	4.0	3.0	62.0	
64.0				2.9			3.5	2.9			3.6	2.9	64.0	
66.0				2.9			3.0	2.9			3.1	2.9	66.0	
68.0				2.9				2.9			2.6	2.9	68.0	
70.0								2.9				2.9	70.0	
72.0												2.5	72.0	
74.0												2.1	74.0	
Reeves	2	1	1	1	2	1	1	1	2	1	1	1	Reeves	

Boom Length (m)		51.8				54.9				57.9				Boom length (m)
Jib length (m)		12.2	18.3	24.4	30.5	12.2	18.3	24.4	30.5	12.2	18.3	24.4	30.5	Jib length (m)
Working radius (m)	18.0	18.3m/18.2				18.8m/18.2				19.4m/18.1				18.0
	20.0	17.4				17.7				17.9				20.0
	22.0	16.7	22.2m/12.5			16.9	22.7m/12.5			17.1	23.3m/12.5			22.0
	24.0	15.9	11.9			16.2	12.1			16.4	12.3			24.0
	26.0	15.3	11.4	26.1m/7.5		15.6	11.6	26.7m/7.5		15.5	11.7	27.2m/7.5		26.0
	28.0	14.2	10.9	7.3		14.0	11.1	7.4		13.9	11.3	7.4		28.0
	30.0	12.8	10.5	7.2	30.1m/4.0	12.6	10.7	7.2	30.6m/4.1	12.5	10.8	7.3	31.1m/4.0	30.0
	32.0	11.6	10.1	7.1	3.9	11.4	10.3	7.1	4.0	11.3	10.4	7.1	4.0	32.0
	34.0	10.6	9.7	6.9	3.8	10.4	9.9	7.0	3.9	10.2	10.1	7.0	3.9	34.0
	36.0	9.7	9.4	6.8	3.7	9.5	9.6	6.8	3.8	9.3	9.7	6.9	3.8	36.0
	38.0	8.9	9.1	6.7	3.7	8.7	9.2	6.7	3.7	8.5	9.1	6.8	3.7	38.0
	40.0	8.1	8.6	6.5	3.6	8.0	8.5	6.6	3.6	7.8	8.3	6.7	3.6	40.0
	42.0	7.5	8.0	6.3	3.5	7.3	7.8	6.4	3.5	7.1	7.7	6.5	3.6	42.0
	44.0	6.9	7.4	6.1	3.4	6.7	7.2	6.2	3.5	6.6	7.1	6.3	3.5	44.0
	46.0	6.4	6.8	5.9	3.4	6.2	6.6	6.0	3.4	6.0	6.5	6.1	3.4	46.0
	48.0	5.9	6.3	5.8	3.3	5.7	6.1	5.9	3.3	5.6	6.0	6.0	3.4	48.0
	50.0	5.5	5.9	5.6	3.2	5.3	5.7	5.7	3.3	5.1	5.6	5.8	3.3	50.0
	52.0	4.9	5.4	5.5	3.2	4.7	5.3	5.6	3.2	4.6	5.1	5.4	3.2	52.0
	54.0	4.4	5.1	5.3	3.1	4.2	4.9	5.2	3.2	4.1	4.7	5.0	3.2	54.0
	56.0	3.8	4.7	5.0	3.1	3.7	4.5	4.8	3.1	3.6	4.4	4.7	3.2	56.0
	58.0	3.3	4.2	4.6	3.1	3.2	4.1	4.5	3.1	3.2	3.9	4.3	3.1	58.0
60.0		3.8	4.3	3.0	2.7	3.6	4.1	3.0	2.7	3.5	4.0	3.1	60.0	
62.0		3.3	3.9	3.0		3.2	3.7	3.0	2.3	3.1	3.6	3.0	62.0	
64.0		2.8	3.5	2.9		2.8	3.4	3.0		2.7	3.2	3.0	64.0	
66.0			3.1	2.9		2.3	3.0	2.9		2.3	2.9	3.0	66.0	
68.0			2.7	2.9			2.6	2.9			2.5	2.9	68.0	
70.0			2.3	2.9			2.2	2.7			2.2	2.6	70.0	
72.0				2.5				2.4				2.3	72.0	
74.0				2.2				2.1					74.0	
Reeves	2	1	1	1	2	1	1	1	2	1	1	1	Reeves	

Note: Ratings according to EN13000.

Ratings shown in are determined by the strength of the boom or other structural components.



Fixed Jib Lifting Capacities (Without Main Hook Block)

Jib Offset Angle : 30°

Counterweight: 55.0 t

Carbody Weight: 10.8 t

Unit: metric ton

Boom Length (m)		61.0												Boom length (m)
Jib length (m)	12.2	18.3	24.4	30.5									Jib length (m)	
18.0	19.9m/18.1												18.0	
20.0	18.1												20.0	
22.0	17.3	23.8m/12.4											22.0	
24.0	16.7	12.4											24.0	
26.0	15.3	11.9	27.7m/7.5										26.0	
28.0	13.8	11.4	7.5										28.0	
30.0	12.4	11.0	7.3	31.6m/4.0									30.0	
32.0	11.2	10.6	7.2	4.0									32.0	
34.0	10.1	10.2	7.1	3.9									34.0	
36.0	9.2	9.8	6.9	3.8									36.0	
38.0	8.4	9.0	6.8	3.7									38.0	
40.0	7.7	8.2	6.7	3.7									40.0	
42.0	7.0	7.6	6.6	3.6									42.0	
44.0	6.4	7.0	6.4	3.5									44.0	
46.0	5.9	6.4	6.2	3.5									46.0	
48.0	5.4	5.9	6.1	3.4									48.0	
50.0	4.9	5.4	5.8	3.3									50.0	
52.0	4.4	5.0	5.3	3.3									52.0	
54.0	3.9	4.6	4.9	3.2									54.0	
56.0	3.5	4.2	4.6	3.2									56.0	
58.0	3.1	3.8	4.2	3.1									58.0	
60.0	2.7	3.4	3.8	3.1									60.0	
62.0	2.2	3.0	3.4	3.1									62.0	
64.0		2.6	3.1	3.0									64.0	
66.0		2.3	2.7	3.0									66.0	
68.0			2.4	2.7									68.0	
70.0			2.1	2.4									70.0	
72.0				2.2									72.0	
Reeves	2	1	1	1									Reeves	

Note: Ratings according to EN13000.

Ratings shown in are determined by the strength of the boom or other structural components.

LIFTING CAPACITIES

Supplemental Data

- Ratings according to EN13000.
 - Operating radius is the horizontal distance from centerline of rotation to a vertical line through the center of gravity of the load.
 - Deduct weight of hook block (s), slings and all other load handling accessories from main boom ratings shown.
 - Ratings shown are based on freely suspended loads and make no allowance for such factors as wind effect on lifted load, ground conditions, out-of-level, operating speeds or any other condition that could be detrimental to the safe operation of this equipment.
- The operator, therefore, has the responsibility to judge the existing conditions and reduce lifted loads and operating speeds accordingly.
- Ratings are for operation on a firm and level surface, up to 1 % gradient.
 - At radii and boom lengths where no ratings are shown on chart, operation is not intended nor approved.
 - Boom inserts and guy lines must be arranged as shown in the "operator's manual".
 - Boom hoist reeving is 12 part line.
 - Gantry must be in raised position for all conditions.
 - Boom backstops are required for all boom lengths.
 - The boom should be erected over the front of the crawlers, not laterally.
 - Ratings inside of boxes are limited by strength of materials.
 - The minimum rated load is 2.0 (ton).

(Main boom)

- The total load that can be lifted is the value for weight of hook block, slings, and all other load handling accessories deducted from main boom ratings shown.

(Main boom with auxiliary sheave frame)

- The total load that can be lifted is the value for weight of main hook block, slings, and all other load handling accessories deducted from main boom with auxiliary sheave ratings shown.

(Auxiliary sheave)

- The total load that can be lifted is the value for weight of jib hook block, slings, and all other load handling accessories deducted from auxiliary sheave ratings shown.
- Boom lengths for auxiliary sheave mounting are 51.8 m to 79.2 m.

Main hoist loads

No. of Parts of Line	1	2	3	4
Maximum Loads (kN)	132	265	397	530
Maximum Loads (t)	13.5	27.0	40.5	54.0

Auxiliary hoist loads

No. of Parts of Line	1
Maximum Loads (kN)	132
Maximum Loads (t)	13.5

Weight of hook block			
Hook Block	70 t	35 t	13.5 t Ball Hook
Weight (t)	1.2	0.9	0.45

Operation of this equipment in excess of rated loads or disregard of instruction voids the warranty.

Long Boom Lifting Capacities													Counterweight: 55.0 t Carbody Weight: 10.8 t	
Unit: metric ton														
Working radius (m)	Boom Length (m)	51.8	54.9	57.9	61.0	64.0	67.1	70.1	73.2	76.2	79.2	82.3	Boom Length (m)	Working radius (m)
		10.0	10.6m/44.3	11.2m/40.5	11.7m/38.2									
12.0	41.6	40.1	37.8	12.2m/35.3	12.7m/33.5	13.3m/27.0	13.8m/26.0						12.0	
14.0	36.1	36.0	35.5	33.4	32.4	27.0	25.8	14.3m/22.3	14.9m/19.4	15.4m/17.0	15.9m/15.0		14.0	
16.0	30.1	30.0	29.8	29.7	29.6	27.0	23.7	20.8	18.5	16.6	14.9		16.0	
18.0	25.6	25.6	25.4	25.2	25.1	25.2	22.0	19.2	17.1	15.3	13.7		18.0	
20.0	22.2	22.2	22.0	21.8	21.7	21.8	20.5	17.9	15.9	14.2	12.7		20.0	
22.0	19.5	19.5	19.3	19.1	19.0	19.1	19.0	16.8	14.9	13.3	11.9		22.0	
24.0	17.4	17.3	17.1	16.9	16.8	16.9	16.8	15.8	14.0	12.5	11.1		24.0	
26.0	15.6	15.5	15.3	15.1	15.0	15.1	15.0	14.9	13.2	11.8	10.5		26.0	
28.0	14.1	14.0	13.8	13.6	13.5	13.6	13.5	13.4	12.5	11.1	9.9		28.0	
30.0	12.8	12.7	12.5	12.3	12.2	12.3	12.2	12.1	11.9	10.6	9.5		30.0	
32.0	11.7	11.6	11.4	11.2	11.1	11.2	11.0	11.0	10.9	10.1	9.0		32.0	
34.0	10.7	10.6	10.4	10.2	10.1	10.2	10.1	10.0	10.0	9.7	8.6		34.0	
36.0	9.8	9.8	9.6	9.4	9.2	9.3	9.2	9.2	9.1	9.0	8.3		36.0	
38.0	9.1	9.0	8.8	8.6	8.5	8.6	8.4	8.4	8.3	8.2	8.0		38.0	
40.0	8.4	8.3	8.1	7.9	7.8	7.9	7.8	7.7	7.7	7.5	7.5		40.0	
42.0	7.8	7.7	7.5	7.3	7.2	7.3	7.2	7.1	7.0	6.9	6.9		42.0	
44.0	7.3	7.2	7.0	6.8	6.7	6.7	6.6	6.6	6.5	6.4	6.3		44.0	
46.0	6.8	6.7	6.5	6.3	6.2	6.2	6.1	6.1	6.0	5.9	5.8		46.0	
48.0	46.4m/6.8	6.3	6.1	5.9	5.7	5.8	5.7	5.6	5.5	5.4	5.4		48.0	
50.0		49.1m/6.1	5.7	5.5	5.3	5.4	5.2	5.2	5.1	5.0	4.9		50.0	
52.0			51.7m/5.4	5.1	5.0	5.0	4.9	4.8	4.7	4.6	4.5		52.0	
54.0				4.8	4.6	4.6	4.5	4.4	4.4	4.2	4.1		54.0	
56.0				54.4m/4.7	4.3	4.3	4.2	4.1	4.0	3.9	3.8		56.0	
58.0					56.9m/4.1	4.0	3.8	3.8	3.7	3.5	3.4		58.0	
60.0						59.6m/3.8	3.5	3.5	3.4	3.2	3.1		60.0	
62.0							3.3	3.2	3.1	3.0	2.9		62.0	
64.0							62.2m/3.2	2.9	2.9	2.7	2.6		64.0	
66.0								64.9m/2.8	2.6	2.5	2.4		66.0	
68.0									67.5m/2.4	2.2	2.1		68.0	
70.0										2.0			70.0	
72.0										70.1m/2.0			72.0	
Reeves	4	3	3	3	3	2	2	2	2	2	2	2	Reeves	

Note: Ratings according to EN13000.

Ratings shown in are determined by the strength of the boom or other structural components.

Supplemental Data

- Ratings according to EN13000.
- Operating radius is the horizontal distance from centerline of rotation to a vertical line through the center of gravity of the load.
- Deduct weight of hook block (s), slings and all other load handling accessories from main boom ratings shown.
- Ratings shown are based on freely suspended loads and make no allowance for such factors as wind effect on lifted load, ground conditions, out-of-level, operating speeds or any other condition that could be detrimental to the safe operation of this equipment.
- The operator, therefore, has the responsibility to judge the existing conditions and reduce lifted loads and operating speeds accordingly.
- Ratings are for operation on a firm and level surface, up to 1 % gradient.
- At radii and boom lengths where no ratings are shown on chart, operation is not intended nor approved.
- Boom inserts and guy lines must be arranged as shown in the "operator's manual".
- Boom hoist reeving is 12 part line.
- Gantry must be in raised position for all conditions.
- Boom backstops are required for all boom lengths.
- The boom should be erected over the front of the crawlers, not laterally.
- Ratings inside of boxes are limited by strength of materials.
- The minimum rated load is 2.0 (ton).

(Main boom)

- The total load that can be lifted is the value for weight of hook block, slings, and all other load handling accessories deducted from main boom ratings shown.

(Main boom with auxiliary sheave frame)

- The total load that can be lifted is the value for weight of main hook block, slings,

and all other load handling accessories deducted from main boom with auxiliary sheave ratings shown.

(Auxiliary sheave)

- The total load that can be lifted is the value for weight of jib hook block, slings, and all other load handling accessories deducted from auxiliary sheave ratings shown.
- Boom lengths for auxiliary sheave mounting are 14.4 m to 47.9 m.

Main hoist loads

No. of Parts of Line	1	2	3	4
Maximum Loads (kN)	132	265	397	530
Maximum Loads (t)	13.5	27.0	40.5	54.0

No. of Parts of Line	5	6
Maximum Loads (kN)	662	794
Maximum Loads (t)	67.5	81.0

Auxiliary hoist loads

No. of Parts of Line	1	2
Maximum Loads (kN)	132	265
Maximum Loads (t)	13.5	27.0

Weight of hook block				
Hook Block	135 t	70 t	35 t	13.5 t Ball Hook
Weight (t)	1.7	1.2	0.9	0.45

Operation of this equipment in excess of rated loads or disregard of instruction voids the warranty.

Luffing Boom Lifting Capacities													Counterweight: 55.0 t Carbody Weight: 10.8 t		
Unit: metric ton															
Working radius (m)	Boom Length (m)	14.4	17.4	20.5	23.5	26.6	29.6	32.7	35.7	38.8	41.8	44.8	47.9	Boom Length (m)	Working radius (m)
		5.0	5.4m/80.0												
6.0	80.0	80.0	6.5m/80.0											6.0	
7.0	80.0	80.0	80.0	80.0	7.5m/80.0									7.0	
8.0	80.0	79.4	78.8	77.0	75.2	8.1m/72.7	8.6m/66.0							8.0	
9.0	68.2	68.2	68.1	66.8	65.3	63.8	62.5	9.1m/60.3	9.7m/55.7					9.0	
10.0	58.3	58.3	58.2	58.1	57.7	56.4	55.2	54.1	53.4	10.2m/51.3	10.7m/48.0	11.2m/44.5		10.0	
12.0	44.1	44.9	44.8	44.7	44.6	44.4	44.3	43.8	43.1	42.3	41.9	41.2		12.0	
14.0	32.5	36.4	36.2	36.1	36.0	35.8	35.6	35.5	35.4	35.3	35.0	34.2		14.0	
16.0	14.6m/29.1	29.3	30.2	30.1	30.0	29.8	29.6	29.5	29.4	29.2	29.2	29.0		16.0	
18.0		17.3m/24.5	25.8	25.7	25.6	25.3	25.2	25.1	24.9	24.8	24.7	24.5		18.0	
20.0			19.9m/20.7	22.3	22.2	21.9	21.8	21.7	21.5	21.4	21.3	21.1		20.0	
22.0				19.0	19.5	19.3	19.1	19.0	18.8	18.7	18.6	18.4		22.0	
24.0				22.5m/17.8	17.3	17.1	16.9	16.8	16.6	16.5	16.4	16.2		24.0	
26.0					25.2m/15.5	15.3	15.2	15.0	14.8	14.7	14.6	14.4		26.0	
28.0						27.8m/13.4	13.7	13.5	13.3	13.2	13.1	12.9		28.0	
30.0							12.2	12.2	12.0	11.9	11.8	11.6		30.0	
32.0							30.5m/11.7	11.1	10.9	10.8	10.7	10.5		32.0	
34.0								33.1m/10.2	10.0	9.8	9.7	9.5		34.0	
36.0									35.7m/8.8	9.0	8.9	8.6		36.0	
38.0					9.0m					7.9	8.1	7.9		38.0	
40.0										38.4m/7.7	7.2	7.2		40.0	
42.0											41.0m/6.7	6.4		42.0	
44.0												43.7m/5.6		44.0	
Reeves	6	6	6	6	6	6	5	5	5	4	4	4	Reeves		

Note: Ratings according to EN13000.

Ratings shown in are determined by the strength of the boom or other structural components.

- Ratings according to EN13000.
- Operating radius is the horizontal distance from centerline of rotation to a vertical line through the center of gravity of the load.
- Ratings shown are based on freely suspended loads and make no allowance for such factors as wind effect on lifted load, ground conditions, out-of-level, operating speeds or any other condition that could be detrimental to the safe operation of this equipment.
The operator, therefore, has the responsibility to judge the existing conditions and reduce lifted loads and operating speeds accordingly.
- Ratings are for operation on a firm and level surface, up to 1 % gradient.
- At radii and boom lengths where no ratings are shown on chart, operation is not intended nor approved.
- Boom and jib inserts and guy lines must be arranged as shown in the "operator's manual".
- Boom hoist reeving is 12 part line.
- Jib hoist reeving is 8 part line.
- Gantry must be in raised position for all conditions.
- Boom and jib backstops are required for all boom and jib combinations.
- Ratings inside of boxes are limited by strength of materials.
- The boom should be erected over the front of the crawlers, not laterally.
- When erecting and lowering for all boom and jib combinations, the blocks for erection must be placed at the end of the crawlers.
- The minimum rated load is 2.0 (ton).
- All ratings shown is calculated in the condition equipped with the auxiliary sheave frame.

(Luffing boom lifting with luffing jib attached)

- The total load that can be lifted is the value for weight of main hook block, slings, and all other load handling accessories deducted from "luffing boom rated loads with luffing jib".

(Luffing jib lifting)

- The total load that can be lifted is the value for weight of jib hook block, slings, and all other load handling accessories deducted from "luffing jib rated loads".

(Luffing jib lifting with main hook block)

- The total load that can be lifted is the value for weight of jib hook block, slings, and all other load handling accessories deducted from "luffing jib rated loads with main hook block".

(Luffing jib lifting with auxiliary sheave hook block)

- The total load that can be lifted is the value for weight of jib hook block, slings, and all other load handling accessories deducted from "luffing jib rated loads with auxiliary sheave hook block".

(Auxiliary sheave lifting with jib hook block)

- The total load that can be lifted over an auxiliary sheave is the weight of auxiliary sheave hook block, slings, and all other load handling accessories deducted from "luffing jib auxiliary sheave rated loads with jib hook block".
- Boom and jib combinations for auxiliary sheave mounting are all boom and jib combinations.

1. Luffing boom and jib combinations.

		Jib Length (m)										
		22.9	25.9	29.0	32.0	35.1	38.1	41.1	44.2	47.2	50.3	53.3
Boom Length (m)	32.7	○	○	○	○	○	○	○	○	○	○	○
	35.7	○	○	○	○	○	○	○	○	○	○	○
	38.8	○	○	○	○	○	○	○	○	○	○	○
	41.8	○	○	○	○	○	○	○	○	○	○	○
	44.8	○	○	○	○	○	○	○	○	○	○	○
	47.9	○	○	○	○	×	×	×	×	×	×	×

○: Combinations which is allowed. ×: Combinations which is not allowed.

2. Maximum hoist load for number of reeving parts of line for hoist rope.

For Main Boom Hook

No. of Parts of Line	1	2	3	4
Maximum Loads (kN)	132	263	393	525
Maximum Loads (t)	13.5	27.0	40.5	54.0

For Jib Hook

No. of Parts of Line	1	2	3
Maximum Loads (kN)	132	263	393
Maximum Loads (t)	13.5	27.0	40.5

For Auxiliary Sheave

No. of Parts of Line	1
Maximum Loads (kN)	132
Maximum Loads (t)	13.5

Weight of hook block			
Hook Block	70 t	35 t	13.5 t Ball Hook
Weight (t)	1.2	0.9	0.45

Operation of this equipment in excess of rated loads or disregard of instruction voids the warranty.

LIFTING CAPACITIES



Luffing Boom Lifting Capacities with Lifting Jib

Counterweight: 55.0 t
Carbody Weight: 10.8 t

Attached at 25 degree boom to luffing jib offset angle

Unit: metric ton

32.7m Boom Length	Boom Length (m)	32.7											Boom Length (m)
	Jib Length (m)	22.9	25.9	29.0	32.0	35.1	38.1	41.1	44.2	47.2	50.3	53.3	Jib Length (m)
Working radius (m)	8.6	53.9	52.3	50.5	49.0	47.4	45.4	43.7	41.9	39.6	37.7	35.6	8.6
	9.0	50.5	49.0	47.3	45.8	44.3	42.3	40.6	38.9	36.7	34.8	32.8	9.0
	10.0	43.5	42.0	40.4	39.0	37.6	35.8	34.2	32.5	30.5	28.7	26.8	10.0
	12.0	32.7	31.4	29.9	28.7	27.4	25.8	24.3	22.9	21.1	19.5	17.8	12.0
	14.0	24.5	23.2	21.9	20.7	19.5	18.0	16.7	15.4	13.7	12.2	10.7	14.0
	16.0	18.7	17.5	16.3	15.2	14.1	12.7	11.5	10.2	8.6	7.3	5.9	16.0
	18.0	14.4	13.3	12.1	11.1	10.0	8.7	7.6	6.4	4.9			18.0
	20.0	11.2	10.1	9.0	8.0	7.0	5.7						20.0
	22.0	8.7	7.6	6.5	5.6								22.0
	24.0	6.7	5.7										24.0
	26.0	5.0											26.0
Reeves	4	4	4	4	4	4	4	4	4	3	3	3	Reeves

35.7m Boom Length	Boom Length (m)	35.7											Boom Length (m)
	Jib Length (m)	22.9	25.9	29.0	32.0	35.1	38.1	41.1	44.2	47.2	50.3	53.3	Jib Length (m)
Working radius (m)	9.1	48.5	46.9	45.3	43.8	42.3	40.5	38.8	37.1	35.0	33.1	31.1	9.1
	10.0	42.5	41.0	39.4	38.1	36.7	34.9	33.3	31.7	29.7	28.0	26.1	10.0
	12.0	32.5	31.2	29.8	28.6	27.3	25.7	24.3	22.9	21.1	19.5	17.9	12.0
	14.0	24.5	23.2	21.9	20.8	19.6	18.2	16.9	15.6	13.9	12.5	11.0	14.0
	16.0	18.7	17.6	16.3	15.3	14.2	12.8	11.6	10.4	8.9	7.5	6.1	16.0
	18.0	14.4	13.3	12.1	11.2	10.1	8.8	7.7	6.5	5.1			18.0
	20.0	11.2	10.1	9.0	8.1	7.1	5.9						20.0
	22.0	8.6	7.6	6.5	5.6								22.0
	24.0	6.7	5.7										24.0
	26.0	5.0											26.0
	Reeves	4	4	4	4	4	4	3	3	3	3	3	Reeves

38.8m Boom Length	Boom Length (m)	38.8											Boom Length (m)
	Jib Length (m)	22.9	25.9	29.0	32.0	35.1	38.1	41.1	44.2	47.2	50.3	53.3	Jib Length (m)
Working radius (m)	9.7	43.7	42.2	40.6	39.2	37.8	36.0	34.5	32.8	30.9	29.1	27.2	9.7
	10.0	41.4	40.0	38.5	37.1	35.7	34.0	32.4	30.8	28.9	27.2	25.4	10.0
	12.0	31.6	30.3	28.9	27.7	26.5	24.9	23.5	22.1	20.4	18.8	17.2	12.0
	14.0	24.3	23.1	21.8	20.7	19.6	18.1	16.9	15.6	14.0	12.6	11.1	14.0
	16.0	18.5	17.3	16.1	15.1	14.0	12.7	11.5	10.3	8.8	7.5	6.2	16.0
	18.0	14.3	13.2	12.1	11.1	10.1	8.8	7.7	6.6	5.1			18.0
	20.0	11.1	10.0	8.9	8.0	7.0	5.8						20.0
	22.0	8.5	7.5	6.4	5.6								22.0
	24.0	6.4	5.5										24.0
	Reeves	4	4	4	3	3	3	3	3	3	3	3	Reeves

Note: Ratings according to EN13000.

Ratings shown in are determined by the strength of the boom or other structural components.

LIFTING CAPACITIES



Luffing Boom Lifting Capacities with Lifting Jib

Counterweight: 55.0 t

Carbody Weight: 10.8 t

Attached at 25 degree boom to luffing jib offset angle

Unit: metric ton

41.8m Boom Length	Boom Length (m)	41.8											Boom Length (m)
	Jib Length (m)	22.9	25.9	29.0	32.0	35.1	38.1	41.1	44.2	47.2	50.3	53.3	Jib Length (m)
Working radius (m)	10.2	39.6	38.1	36.6	35.3	34.0	32.3	30.8	29.2	27.3	25.6	23.9	10.2
	12.0	31.0	29.7	28.3	27.1	25.9	24.4	23.0	21.6	19.9	18.4	16.8	12.0
	14.0	24.3	23.1	21.8	20.8	19.6	18.2	17.0	15.7	14.1	12.7	11.3	14.0
	16.0	18.5	17.3	16.1	15.1	14.1	12.7	11.6	10.4	8.9	7.7	6.3	16.0
	18.0	14.3	13.2	12.1	11.1	10.1	8.9	7.8	6.7	5.3			18.0
	20.0	11.0	10.0	8.9	8.0	7.1	5.9	4.8					20.0
	22.0	8.5	7.5	6.4	5.6								22.0
	24.0	6.4	5.4										24.0
	Reeves	3	3	3	3	3	3	3	3	3	2	2	Reeves

44.8m Boom Length	Boom Length (m)	44.8											Boom Length (m)
	Jib Length (m)	22.9	25.9	29.0	32.0	35.1	38.1	41.1	44.2	47.2	50.3	53.3	Jib Length (m)
Working radius (m)	10.7	36.4	35.1	33.6	32.4	31.1	29.4	28.0	26.5	24.7	23.1	21.4	10.7
	12.0	30.6	29.4	28.0	26.8	25.6	24.1	22.8	21.4	19.7	18.2	16.6	12.0
	14.0	24.1	22.9	21.6	20.6	19.5	18.0	16.8	15.6	14.0	12.7	11.2	14.0
	16.0	18.5	17.4	16.2	15.2	14.2	12.9	11.8	10.6	9.1	7.9	6.6	16.0
	18.0	14.2	13.2	12.0	11.1	10.1	8.9	7.8	6.7	5.4			18.0
	20.0	11.0	10.0	8.9	8.0	7.1	5.9	4.9					20.0
	22.0	8.4	7.4	6.4	5.5								22.0
	24.0	6.3	5.4										24.0
	Reeves	3	3	3	3	3	3	3	2	2	2	2	Reeves

47.9m Boom Length	Boom Length (m)	47.9											Boom Length (m)
	Jib Length (m)	22.9	25.9	29.0	32.0								Jib Length (m)
Working radius (m)	11.2	33.2	31.9	30.5	29.3								11.2
	12.0	30.1	28.8	27.5	26.3								12.0
	14.0	23.5	22.3	21.1	20.0								14.0
	16.0	18.4	17.3	16.2	15.2								16.0
	18.0	14.1	13.1	12.0	11.1								18.0
	20.0	10.9	9.9	8.8	8.0								20.0
	22.0	8.3	7.4	6.4	5.5								22.0
	24.0	6.2	5.3										24.0
	Reeves	3	3	3	3								Reeves

Note: Ratings according to EN13000.

Ratings shown in are determined by the strength of the boom or other structural components.



Luffing Jib Lifting Capacities

Counterweight: 55.0 t

Carbody Weight: 10.8 t

Unit: metric ton

32.7m Boom Length

Boom Length (m)	32.7																								Boom Length (m)						
Jib Length (m)	22.9						25.9						29.0						32.0						Jib Length (m)						
Boom angle (deg)	88	83	78	73	68	63	88	83	78	73	68	63	88	83	78	73	68	63	88	83	78	73	68	63	88	83	78	73	68	63	Boom angle (deg)
12.0	36.0																												12.0		
14.0	32.0						32.0						32.0												30.2				14.0		
16.0	28.0						28.0						28.0												28.0				16.0		
18.0	24.4	26.4					24.6	26.3					24.6												24.5				18.0		
20.0	20.3	23.2					20.6	23.0					20.8	22.7											20.9	22.6			20.0		
22.0	17.1	20.6	19.2				17.5	20.4					17.7	20.2											17.8	20.1			22.0		
24.0	14.5	18.4	17.3				15.0	18.3	17.0				15.2	18.1	16.8										15.4	18.0			24.0		
26.0		16.3	15.6	14.5			12.9	16.5	15.5				13.2	16.3	15.3										13.4	16.2	15.0		26.0		
28.0		13.8	14.2	13.3				14.5	14.1	13.0			11.5	14.7	13.9										11.8	14.6	13.8		28.0		
30.0			13.0	12.2	11.2			12.4	12.9	12.1			10.0	12.8	12.7	11.7									10.3	13.1	12.6		30.0		
32.0				11.9	10.5			10.2	11.8	11.1	10.1			11.2	11.7	10.9									9.1	11.5	11.6	10.6	32.0		
34.0					10.3	9.7	8.8			10.9	10.3	9.5			9.7	10.8	10.1	9.1							10.1	10.7	10.0		34.0		
36.0						9.0	8.3				9.5	8.8	7.9			10.0	9.4	8.6							8.9	9.9	9.2	8.3	36.0		
38.0							7.7				8.2	7.6				9.1	8.7	8.0	7.2						7.4	9.2	8.6	7.9	38.0		
40.0								7.2				7.6	7.0				8.1	7.5	6.9							8.4	8.0	7.4	6.5	40.0	
42.0												6.6					7.0	6.4									7.5	6.9	6.3	42.0	
44.0																	6.0											6.4	5.9	44.0	
46.0																		5.6										6.0	5.5	46.0	
48.0																													5.1	48.0	
Reeves				3						3																			3	Reeves	

Boom Length (m)	32.7																								Boom Length (m)						
Jib Length (m)	35.1						38.1						41.1						44.2						Jib Length (m)						
Boom angle (deg)	88	83	78	73	68	63	88	83	78	73	68	63	88	83	78	73	68	63	88	83	78	73	68	63	88	83	78	73	68	63	Boom angle (deg)
16.0	26.6						23.9																						16.0		
18.0	24.4						22.7						21.0												19.0				18.0		
20.0	20.9						20.8						19.9												18.0				20.0		
22.0	17.9	19.9					17.8	19.7					18.5												17.1				22.0		
24.0	15.5	17.9					15.4	17.7					15.9	17.4											15.9				24.0		
26.0	13.5	16.1					13.5	15.9					13.9	15.8											13.9	15.5			26.0		
28.0	11.9	14.5	13.5				11.8	14.4	13.3				12.3	14.3											12.2	14.2			28.0		
30.0	10.5	13.2	12.5				10.5	13.0	12.4				10.9	12.9	12.0										10.8	12.9			30.0		
32.0	9.3	11.6	11.4	10.4			9.3	11.6	11.4				9.7	11.6	11.3										9.6	11.5	10.9		32.0		
34.0	8.2	10.3	10.6	9.9			8.3	10.3	10.5	9.4			8.6	10.3	10.4										8.6	10.3	10.3		34.0		
36.0	7.3	9.1	9.8	9.1			7.4	9.2	9.7	9.0			7.7	9.2	9.6	8.6									7.7	9.2	9.5		36.0		
38.0		8.1	9.1	8.5	7.5		6.5	8.2	9.0	8.3			6.9	8.2	8.9	8.2									6.9	8.2	8.8	7.8	38.0		
40.0		7.1	8.5	7.9	7.2			7.3	8.4	7.7	6.8			6.1	7.4	8.3	7.6								6.2	7.4	8.2	7.5	40.0		
42.0			7.7	7.4	6.8	5.9		6.5	7.9	7.2	6.6			5.4	6.6	7.8	7.1	6.2							5.5	6.6	7.7	7.0	42.0		
44.0			6.7	6.9	6.3	5.7		5.4	7.4	6.7	6.1	5.2			5.9	7.3	6.6	6.0							4.9	6.0	7.2	6.5	44.0		
46.0				6.5	5.9	5.3			6.5	6.3	5.7	5.1			5.2	6.7	6.2	5.6	4.7							5.3	6.7	6.1	5.5	46.0	
48.0					5.5	5.0				5.9	5.4	4.8				5.9	5.8	5.3	4.6							4.7	6.1	5.7	5.1	4.1	48.0
50.0						4.6					5.0	4.4					5.5	4.9	4.3							3.9	5.4	5.4	4.8	4.1	50.0
52.0							4.3					4.7	4.1				5.1	4.6	4.0								4.8	5.0	4.4	3.8	52.0
54.0												3.8							4.3	3.7								4.7	4.1	3.6	54.0
56.0																				3.5									3.9	3.3	56.0
58.0																													3.6	3.1	58.0
60.0																														2.9	60.0
Reeves					2						2																			2	Reeves

Boom Length (m)	32.7																								Boom Length (m)						
Jib Length (m)	47.2						50.3						53.3												Jib Length (m)						
Boom angle (deg)	88	83	78	73	68	63	88	83	78	73	68	63	88	83	78	73	68	63													Boom angle (deg)
20.0	16.8						15.1																							20.0	
22.0	15.9						14.3																							22.0	
24.0	15.1						13.6																							24.0	
26.0	13.7	15.0					12.9																							26.0	
28.0	12.1	13.8					12.0	13.5																						28.0	
30.0	10.7	12.7					10.6	12.9																						30.0	
32.0	9.5	11.4	10.7				9.4	11.8																						32.0	
34.0	8.5	10.1	10.1				8.4	10.8	9.7																					34.0	
36.0	7.6	9.1	9.3				7.6	9.7	9.2																					36.0	
38.0	6.8	8.1	8.7				6.8	8.6	8.5																					38.0	
40.0	6.1	7.3	8.0	7.0			6.1	7.8	7.9	6.9																				40.0	
42.0	5.5	6.6	7.5	6.8			5.5	7.0	7.4	6.7																				42.0	
44.0	4.9	5.9	7.0	6.4			4.9	6.3	6.9	6.2																				44.0	
46.0	4.4	5.3	6.6	5.9	4.9		4.0	5.6	6.4	5.8																				46.0	
48.0	3.9	4.7	6.0	5.6	4.9			5.1	6.0	5.4	4.4																			48.0	
50.0		4.2	5.4	5.2	4.6	3.6		4.5	5.4	5.1	4.4																			50.0	
52.0		3.7	4.9	4.9	4.2	3.6		3.8	4.9	4.7	4.1																			52.0	
54.0			4.3	4.6	3.9	3.4			4.4	4.4	3.8																			54.0	
56.0				4.3	3.7	3.1			3.9	4.1	3.5																			56.0	
58.0					4.0	3.4	2.9			3.9	3.3																				



Luffing Jib Lifting Capacities

Counterweight: 55.0 t
Carbody Weight: 10.8 t

Unit: metric ton

38.8m Boom Length

Boom Length (m)	38.8																		Boom Length (m)												
Jib Length (m)	22.9						25.9						29.0						32.0						Jib Length (m)						
Boom angle (deg)	88	83	78	73	68	63	88	83	78	73	68	63	88	83	78	73	68	63	88	83	78	73	68	63	88	83	78	73	68	63	Boom angle (deg)
12.0	35.6																											12.0			
14.0	31.6						31.5						28.7															14.0			
16.0	27.6						27.6						27.2						25.4									16.0			
18.0	24.8	26.0					24.7	25.8					24.5						24.1									18.0			
20.0	20.6	22.8					20.9	22.6					21.1	22.3					21.1									20.0			
22.0	17.3	20.2	18.5				17.7	20.0					17.9	19.8					18.1	19.6								22.0			
24.0	14.7	18.1	16.7				15.2	17.9	16.4				15.4	17.7					15.6	17.6								24.0			
26.0		16.3	15.1				13.1	16.2	14.9				13.4	16.0	14.5				13.6	15.9								26.0			
28.0		14.7	13.7	12.4			14.7	13.5					11.6	14.5	13.3				11.9	14.4	13.1							28.0			
30.0		11.7	12.5	11.6			13.1	12.4	11.1				10.1	13.3	12.2				10.4	13.2	12.2							30.0			
32.0			11.5	10.6	9.4		11.2	11.4	10.5				11.7	11.2	10.0				9.2	12.0	11.2	9.9						32.0			
34.0				9.8	8.9			10.5	9.7	8.5				10.2	10.3	9.5				10.6	10.3	9.3						34.0			
36.0					9.1	8.2		9.7	8.9	8.1				8.4	9.6	8.8	7.6			9.3	9.6	8.6						36.0			
38.0						7.7	6.6		8.3	7.5				8.9	8.1	7.3				8.1	8.9	8.0	6.9					38.0			
40.0						7.1	6.4			7.0	5.9					7.6	6.8				8.3	7.5	6.7					40.0			
42.0							5.9			6.5	5.7					7.1	6.3	5.2			7.7	7.0	6.2					42.0			
44.0											5.3						5.9	5.1				6.5	5.8	4.7				44.0			
46.0											4.9							4.7					5.4	4.6				46.0			
48.0																	4.4						5.0	4.3				48.0			
50.0																							4.0	4.0				50.0			
Reeves			3						3							3						2						Reeves			

Working radius (m)

Boom Length (m)	38.8																		Boom Length (m)												
Jib Length (m)	35.1						38.1						41.1						44.2						Jib Length (m)						
Boom angle (deg)	88	83	78	73	68	63	88	83	78	73	68	63	88	83	78	73	68	63	88	83	78	73	68	63	88	83	78	73	68	63	Boom angle (deg)
16.0	23.2						21.2																					16.0			
18.0	22.0						20.1						18.8						17.1									18.0			
20.0	20.9						19.1						17.8						16.2									20.0			
22.0	18.1	19.4					18.0						16.9						15.4									22.0			
24.0	15.6	17.5					15.6	17.2					16.1	17.0					14.6									24.0			
26.0	13.6	15.8					13.6	15.6					14.1	15.5					13.9	15.2								26.0			
28.0	12.0	14.3	12.9				12.0	14.2					12.4	14.0					12.3	13.9								28.0			
30.0	10.6	13.1	12.1				10.6	12.9	11.6				11.0	12.8					10.9	12.7								30.0			
32.0	9.4	12.0	11.1				9.4	11.9	10.9				9.7	11.7	10.5				9.7	11.6	10.3							32.0			
34.0	8.3	10.7	10.2	8.9			8.3	10.7	10.1				8.7	10.7	9.9				8.7	10.6	9.8							34.0			
36.0	7.3	9.5	9.5	8.5			7.4	9.6	9.3	8.0			7.8	9.6	9.2				7.8	9.5	9.1							36.0			
38.0		8.4	8.8	7.9			6.6	8.5	8.6	7.7			6.9	8.5	8.5	7.3			7.0	8.5	8.4							38.0			
40.0		7.4	8.2	7.4	6.2			7.5	8.0	7.2			6.2	7.7	7.9	7.1			6.2	7.7	7.8	6.6						40.0			
42.0			7.7	6.9	6.1			6.7	7.5	6.7	5.5		5.5	6.8	7.4	6.6			5.6	6.9	7.3	6.4						42.0			
44.0				7.2	6.4	5.6			5.9	7.0	6.3	5.4		6.1	6.9	6.1	4.9		4.9	6.2	6.8	6.0						44.0			
46.0					6.0	5.3	4.1			6.6	5.8	5.0		5.4	6.5	5.7	4.9			5.5	6.4	5.6	4.4					46.0			
48.0						5.6	4.9	4.1			6.1	5.5	4.7	3.6		6.1	5.4	4.5		4.9	6.0	5.2	4.4					48.0			
50.0							4.6	3.8				5.1	4.4	3.6			5.6	5.0	4.2	3.1	4.3	5.6	4.9	4.1				50.0			
52.0								3.6					4.1	3.3				4.7	3.9	3.1			5.2	4.6	3.8	2.7		52.0			
54.0									3.3										4.4	3.6	2.9			4.5	4.2	3.5	2.7	54.0			
56.0																								4.0	3.3	2.6		56.0			
58.0																									3.0	2.4			58.0		
60.0																										2.8	2.2		60.0		
62.0																											2.0		62.0		
Reeves			2						2							2					2								Reeves		

Working radius (m)

Boom Length (m)	38.8																		Boom Length (m)												
Jib Length (m)	47.2						50.3						53.3						Jib Length (m)												
Boom angle (deg)	88	83	78	73	68	63	88	83	78	73	68	63	88	83	78	73	68	63	88	83	78	73	68	63	88	83	78	73	68	63	Boom angle (deg)
20.0	15.2						13.9																					20.0			
22.0	14.4						13.2						12.3															22.0			
24.0	13.7						12.5						11.6															24.0			
26.0	13.0	14.8					11.9						11.1															26.0			
28.0	12.2	13.6					11.3	13.3					10.5															28.0			
30.0	10.8	12.5					10.7	12.6					10.0	11.9														30.0			
32.0	9.6	11.5					9.5	11.5					9.4	11.3														32.0			
34.0	8.6	10.5	9.3				8.5	10.6					8.4	10.5														34.0			
36.0	7.7	9.4	8.9				7.6	9.8	8.4				7.5	9.7	8.3													36.0			
38.0	6.9	8.4	8.2				6.8	9.0	8.1				6.8	8.9	8.0													38.0			
40.0	6.2	7.6	7.6	6.4			6.1	8.1	7.5				6.1	8.0	7.4													40.0			
42.0	5.5	6.8	7.1	6.3			5.5	7.2	7.0	5.7			5.4	7.2	6.9													42.0			
44.0	4.9	6.1	6.6	5.8			4.9	6.5	6.5	5.7			3.7	6.4	6.4	5.1												44.0			
46.0	4.4	5.5	6.2	5.4			3.7	5.8	6.1	5.3				5.8	6.0	5.1												46.0			
48.0	3.9	4.9	5.8	5.0	3.8			5.2	5.7	4.9				5.2	5.6	4.7												48.0			
50.0		4.4	5.5	4.7	3.8			4.7	5.3	4.5	3.3			4.6	5.2	4.4												50.0			
52.0		3.9	5.1	4.4	3.6				5.0	4.2	3.3				4.9	4.1												52.0			
54.0			4.6	4.1	3.3				4.7	3.9	3.1				4.6	3.8												54.0			
56.0			4.1	3.8	3.1				4.2	3.6	2.9				4.2	3.5												56.0			
58.0				3.5	2.8				3.6	3.4	2.7																				

LIFTING CAPACITIES



Luffing Jib Lifting Capacities

Counterweight: 55.0 t

Carbody Weight: 10.8 t

Unit: metric ton

41.8m Boom Length	41.8																										Working radius (m)		
	22.9						25.9						29.0						32.0										
	88	83	78	73	68	63	88	83	78	73	68	63	88	83	78	73	68	63	88	83	78	73	68	63					
12.0	32.8																												
14.0	31.1						29.0																						
16.0	27.4						27.5																23.6						
18.0	24.7						24.6																22.4						
20.0	20.8	25.7					21.1	22.3															21.2						
22.0	17.5	20.0					17.9	19.8															18.2	19.4					
24.0	14.8	17.9	16.2				15.3	17.7	16.0														15.7	17.4					
26.0	16.2	14.8					13.1	16.0	14.6														13.6	15.7					
28.0		14.7	13.4	12.0				14.6	13.3														11.9	14.3	12.8				
30.0		12.6	12.3	11.2				13.3	12.1	10.8													10.5	13.1	11.9				
32.0			11.3	10.3				11.6	11.1	10.1													9.2	12.0	11.0				
34.0			10.4	9.5	8.3				10.3	9.4													10.5	10.1	9.2				
36.0				8.8	7.9				9.5	8.7	7.5												9.0	9.4	8.5				
38.0					7.3	6.1				8.0	7.1													8.7	7.9	6.7			
40.0					6.8	5.9				7.5	6.6	5.4												8.1	7.3	6.5			
42.0						5.5					6.2	5.3													6.8	6.0	4.7		
44.0						5.1					5.7	4.9														5.6	4.7		
46.0												4.5														5.2	4.3		
48.0																											4.0		
50.0																												3.7	
52.0																													
Reeves					3						3																		

41.8m Boom Length	41.8																										Working radius (m)		
	35.1						38.1						41.1						44.2										
	88	83	78	73	68	63	88	83	78	73	68	63	88	83	78	73	68	63	88	83	78	73	68	63					
16.0	21.7																												
18.0	20.6																												
20.0	19.5																												
22.0	18.2	19.2																											
24.0	15.7	17.3																											
26.0	13.7	15.6																											
28.0	12.0	14.2																											
30.0	10.6	12.9	11.5																										
32.0	9.4	11.9	10.9																										
34.0	8.3	11.0	10.0																										
36.0	7.3	9.7	9.3	7.9																									
38.0		8.6	8.6	7.6																									
40.0		7.5	8.0	7.1																									
42.0		6.6	7.5	6.6	5.4																								
44.0			7.0	6.2	5.3																								
46.0				5.8	4.9	3.7																							
48.0				5.4	4.6	3.7																							
50.0					4.2	3.4																							
52.0					3.9	3.2																							
54.0						2.9																							
56.0						2.7																							
58.0																													
60.0																													
Reeves					2						2																		

41.8m Boom Length	41.8																										Working radius (m)		
	47.2						50.3						53.3																
	88	83	78	73	68	63	88	83	78	73	68	63	88	83	78	73	68	63											
20.0	14.4																												
22.0	13.6																												
24.0	12.9																												
26.0	12.3																												
28.0	11.7	13.4																											
30.0	10.9	12.5																											
32.0	9.7	11.5																											
34.0	8.6	10.6	9.1																										
36.0	7.7	9.8	8.7																										
38.0	6.9	9.1	8.0																										
40.0	6.2	8.3	7.5																										
42.0	5.5	7.4	6.9	5.6																									
44.0	5.0	6.7	6.5	5.5																									
46.0	4.4	6.0	6.0	5.1																									
48.0	3.8	5.3	5.7	4.8	3.4																								
50.0		4.8	5.3	4.4	3.4																								
52.0		4.2	5.0	4.1	3.2																								
54.0		3.6	4.7	3.8	3.0																								
56.0			4.2	3.5	2.8																								
58.0				3.3	2.5																								
60.0					3.1	2.3																							
62.0						2.1																							
64.0							2.0																						
Reeves					2						2																		

Note: Ratings according to EN13000.

Ratings shown in are determined by the strength of the boom or other structural components.



Luffing Jib Lifting Capacities

Counterweight: 55.0 t
Carbody Weight: 10.8 t

Unit: metric ton

44.8m Boom Length

Boom Length (m)		44.8																								Boom Length (m)							
Jib Length (m)		22.9						25.9						29.0						32.0						Jib Length (m)							
Boom angle (deg)		88	83	78	73	68	63	88	83	78	73	68	63	88	83	78	73	68	63	88	83	78	73	68	63	88	83	78	73	68	63	Boom angle (deg)	
Working radius (m)	12.0	30.2																													12.0		
	14.0	28.6																													14.0		
	16.0	27.2																													16.0		
	18.0	24.7	25.5																												18.0		
	20.0	20.9	22.4																												20.0		
	22.0	17.6	19.8																												22.0		
	24.0	14.9	17.7	15.9																											24.0		
	26.0		16.0	14.5																											26.0		
	28.0		14.5	13.2																											28.0		
	30.0		13.1	12.0	10.6																										30.0		
	32.0			11.1	10.0																										32.0		
	34.0				10.2	9.2																									34.0		
	36.0					8.5	7.3																								36.0		
	38.0						7.0																								38.0		
	40.0							6.5	5.2																						40.0		
	42.0								6.0	5.0																					42.0		
	44.0									4.7																					44.0		
	46.0																														46.0		
	48.0																														48.0		
	50.0																														50.0		
52.0																														52.0			
54.0																														54.0			
	Reeves				3							2																		Reeves			

Boom Length (m)		44.8																								Boom Length (m)							
Jib Length (m)		35.1						38.1						41.1						44.2						Jib Length (m)							
Boom angle (deg)		88	83	78	73	68	63	88	83	78	73	68	63	88	83	78	73	68	63	88	83	78	73	68	63	88	83	78	73	68	63	Boom angle (deg)	
Working radius (m)	16.0	20.3																												16.0			
	18.0	19.2																												18.0			
	20.0	18.3																												20.0			
	22.0	17.4																												22.0			
	24.0	15.8	17.0																											24.0			
	26.0	13.8	15.4																											26.0			
	28.0	12.1	14.0																											28.0			
	30.0	10.7	12.8	11.2																										30.0			
	32.0	9.4	11.7	10.6																										32.0			
	34.0	8.3	10.8	9.8																										34.0			
	36.0	7.4	9.9	9.1	7.6																									36.0			
	38.0		8.8	8.4	7.3																									38.0			
	40.0			7.8	6.8																									40.0			
	42.0			6.8	6.4	4.9																								42.0			
	44.0				6.8	5.9	4.9																							44.0			
	46.0					6.4	5.5	4.5																						46.0			
	48.0						5.2	4.2	3.0																					48.0			
	50.0							4.8	3.9	3.0																				50.0			
	52.0								3.6	2.8																				52.0			
	54.0									3.4	2.6																			54.0			
56.0										2.4																			56.0				
58.0																													58.0				
60.0																													60.0				
62.0																													62.0				
	Reeves					2						2																	Reeves				

Boom Length (m)		44.8																								Boom Length (m)			
Jib Length (m)		47.2						50.3						53.3												Jib Length (m)			
Boom angle (deg)		88	83	78	73	68	63	88	83	78	73	68	63	88	83	78	73	68	63							Boom angle (deg)			
Working radius (m)	20.0	13.7																											20.0
	22.0	13.0																											22.0
	24.0	12.3																											24.0
	26.0	11.7																											26.0
	28.0	11.1	13.1																										28.0
	30.0	10.6	12.4																										30.0
	32.0	9.7	11.4																										32.0
	34.0	8.6	10.4																										34.0
	36.0	7.7	9.7	8.1																									36.0
	38.0	6.9	8.9	7.8																									38.0
	40.0	6.2	8.3	7.3																									40.0
	42.0	5.6	7.6	6.7	5.2																								42.0
	44.0	5.0	6.8	6.3	5.2																								44.0
	46.0	4.4	6.1	5.9	4.8																								46.0
	48.0	3.7	5.3	5.5	4.5																								48.0
	50.0		4.9	5.1	4.1																								50.0
	52.0			4.3	4.8	3.8																							52.0
	54.0				3.7	4.5	3.6																						54.0
	56.0					4.1	3.3																						56.0
	58.0						3.8	3.1																					58.0
60.0							2.8																					60.0	
62.0								2.6																				62.0	
64.0									2.6																			64.0	
	Reeves						2					2																Reeves	

Note: Ratings according to EN13000.

Ratings shown in are determined by the strength of the boom or other structural components.

LIFTING CAPACITIES



Luffing Jib Lifting Capacities

Counterweight: 55.0 t

Carbody Weight: 10.8 t

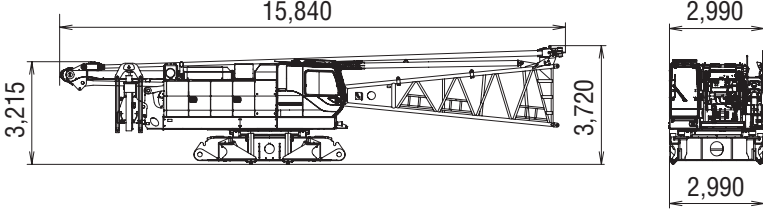
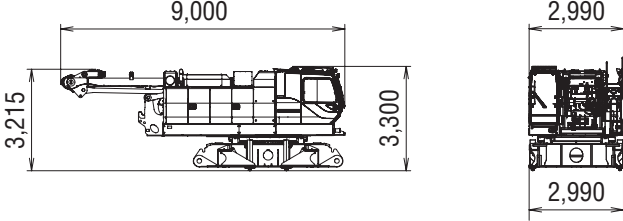
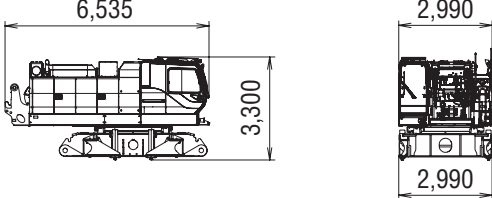
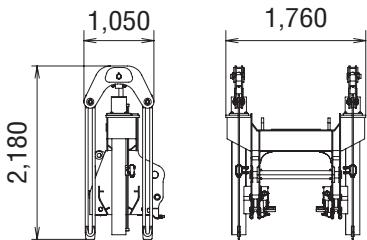
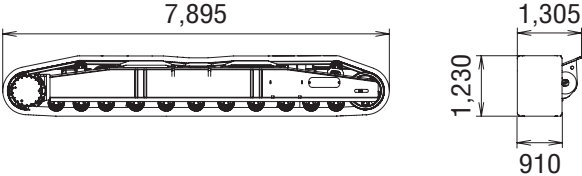
Unit: metric ton

47.9m Boom Length	47.9																																											
	22.9						25.9						29.0						32.0																									
	88	83	78	73	68	63	88	83	78	73	68	63	88	83	78	73	68	63	88	83	78	73	68	63																				
Working radius (m)	12.0	14.0	16.0	18.0	20.0	22.0	24.0	26.0	28.0	30.0	32.0	34.0	36.0	38.0	40.0	42.0	44.0	46.0	48.0	50.0	52.0	54.0	12.0	14.0	16.0	18.0	20.0	22.0	24.0	26.0	28.0	30.0	32.0	34.0	36.0	38.0	40.0	42.0	44.0	46.0	48.0	50.0	52.0	54.0
Reeves	3						2						2						2						Reeves																			

Note: Ratings according to EN13000.

Ratings shown in are determined by the strength of the boom or other structural components.

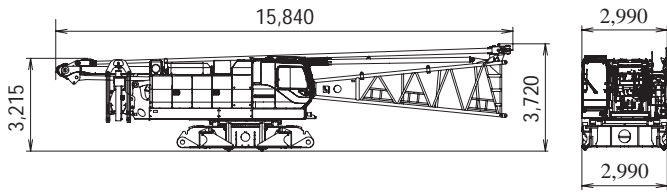
TRANSPORTATION PLAN

Name	Dimension	Weight (kg)
Base Machine <ul style="list-style-type: none"> • Gantry • Wire rope (Front / rear / boom hoist) • Boom base • Crane backstop • Self removal cylinder • Without crawler 		38,250
Base Machine <ul style="list-style-type: none"> • Gantry • Wire rope (Front / rear / boom hoist) • Without crawler • Without self removal cylinder 		32,430
Base Machine <ul style="list-style-type: none"> • Without crawler • Without gantry • Without wire rope (Boom hoist) • Without self removal cylinder 		29,620
Self removal cylinder		1,510
Crawler		14,225

PARTS AND ATTACHMENTS

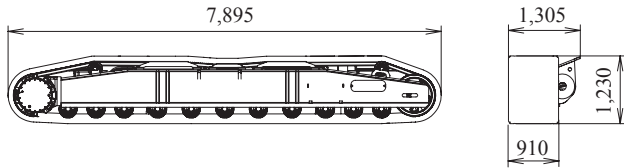
Base Machine

Gantry, Wire rope (Front/rear/boom hoist), Boom base, Crane backstop, Self removal cylinder, Without crawler
 Weight: 38,250 kg Width: 2,990 mm



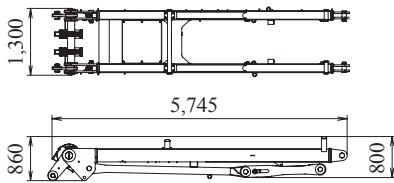
Crawler

Weight: 14,225 kg



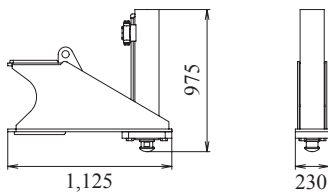
Gantry

Weight: 2,090 kg



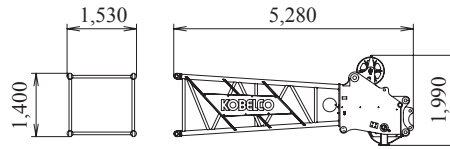
Translifter

Weight: 1,220 kg / 4 Pieces



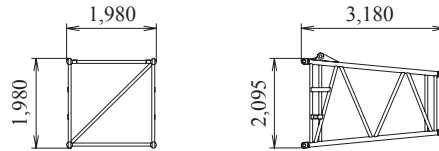
Boom Tip (For Crane)

Weight: 1,670 kg



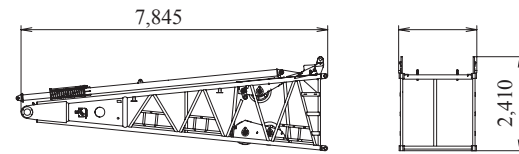
Taper Boom Insert

Weight: 490 kg



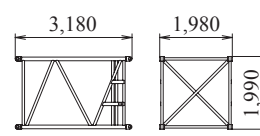
Boom Base

Weight: 3,730 kg



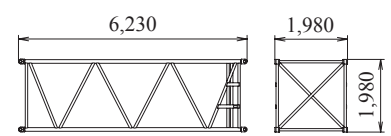
3.0 m (10 ft) Boom Insert

Weight: 530 kg



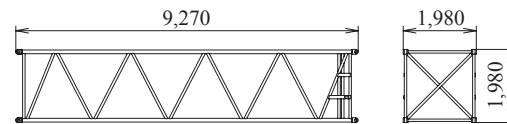
6.1 m (20 ft) Boom Insert

Weight: 850 kg



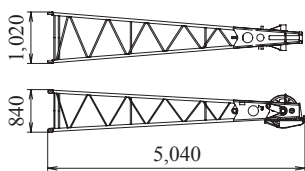
9.1 m (30 ft) Boom Insert

Weight: 1,160 kg



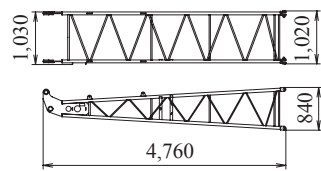
Jib Tip (Fixed Jib)

Weight: 315 kg



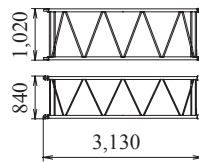
Jib Base (Fixed Jib)

Weight: 210 kg



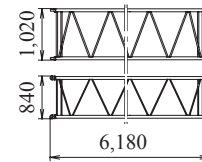
3.0 m (10 ft) Jib Insert (Fixed Jib)

Weight: 110 kg



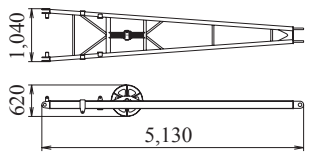
6.1 m (20 ft) Jib Insert (Fixed Jib)

Weight: 190 kg



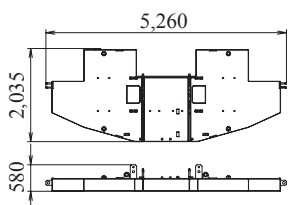
Crane Jib Strut

Weight: 300 kg



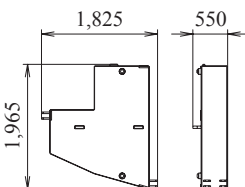
Counterweight (Base Weight)

Weight: 10,000 kg



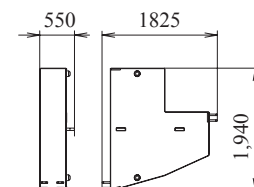
Counterweight

Weight: 4,500 kg



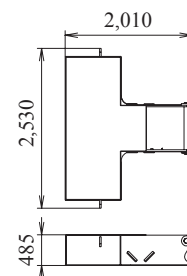
Counterweight (Add. weight)

Weight: 4,500 kg



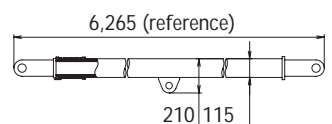
Carbody Weight

Weight: 10,800 kg / 2 Piece

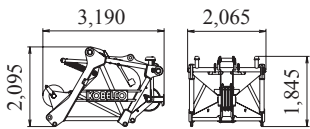


Crane Backstop

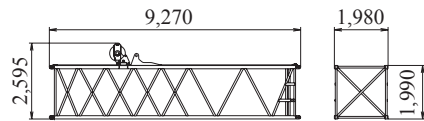
Weight: 210 kg / 1 Piece



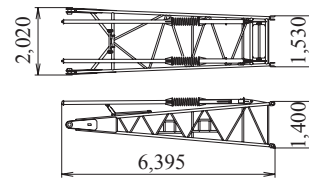
Luffing Upper Boom
Weight: 2,465 kg



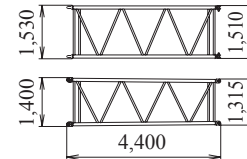
9.1 m (30 ft) Special Boom Insert For Tower (Inc. guide sheave and steps)
Weight: 1,795 kg



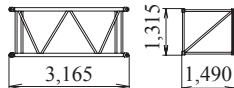
Jib Base (Luffing Jib)
Weight: 1,200 kg



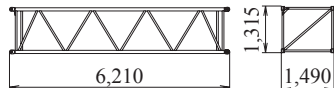
4.3 m (14 ft) Taper Jib Insert (Luffing Jib)
Weight: 410 kg



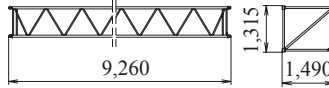
3.0 m (10 ft) Jib Insert (Luffing Jib)
Weight: 310 kg



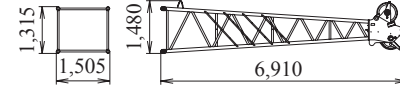
6.1 m (20 ft) Jib Insert (Luffing Jib)
Weight: 540 kg



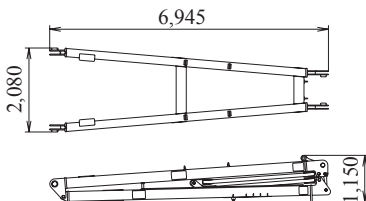
9.1 m (30 ft) Jib Insert (Luffing Jib)
Weight: 740 kg



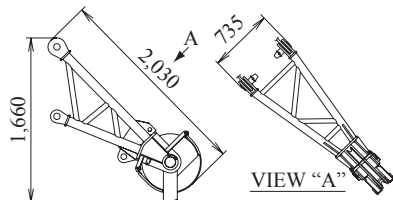
Jib Tip (Luffing Jib)
Weight: 1,170 kg



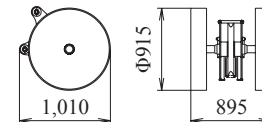
Jib Strut (Luffing Jib)
Weight: 2,010 kg



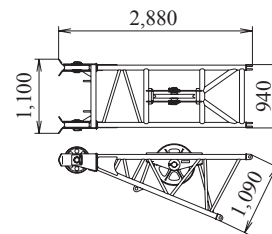
Auxiliary Sheave (For Crane)
Weight: 300 kg



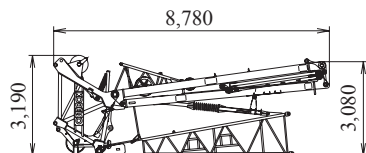
Auxiliary Sheave (For Luffing)
Weight: 380 kg



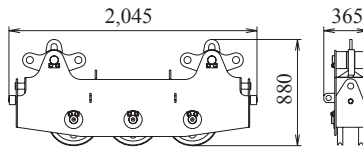
Rear Guide Roller
Weight: 425 kg



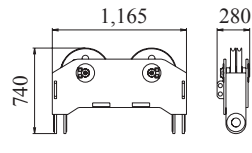
Luffing Boom Tip Assembly
Weight: 5,300 kg Width : 2,065 mm



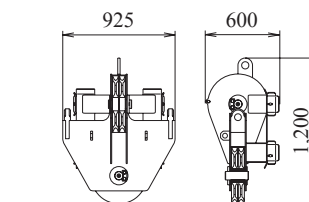
Upper Spreader (For Crane)
Weight: 485 kg



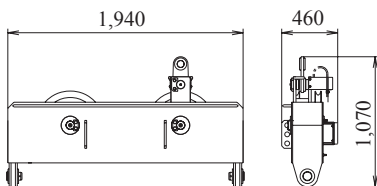
Lower Spreader (For Crane)
Weight: 300 kg



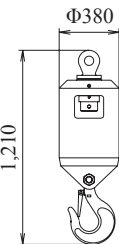
Jib Upper Spreader (For Luffing)
Weight: 260 kg



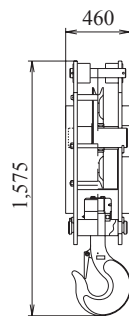
Jib Lower Spreader (For Luffing)
Weight: 405 kg



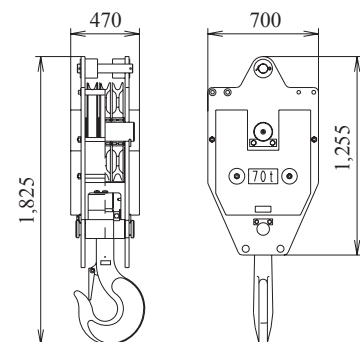
Ball Hook
Weight: 450 kg



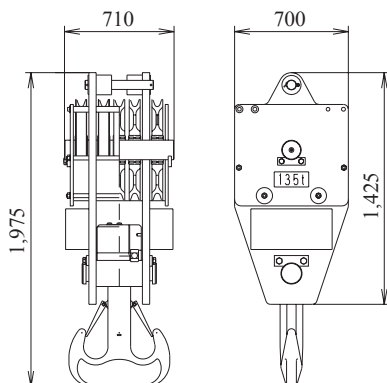
35 t Hook
Weight: 900 kg



70 t Hook
Weight: 1,200 kg



135 t Hook
Weight: 1,700 kg



Note: This catalog may contain photographs of machines with specifications, attachments and optional equipment not certified for operation in your country. Please consult KOBELCO for those items you may require. Due to our policy of continual product improvements all designs and specifications are subject to change without advance notice.

Copyright by KOBELCO CRANES CO., LTD. No part of this catalog may be reproduced in any manner without notice.



KOBELCO CRANES CO., LTD.

17-1, Higashigotanda 2-chome, Shinagawa-ku, Tokyo 141-8626 JAPAN

Tel: +81-3-5789-2130 Fax: +81-3-5789-3372

URL: <http://www.kobelco-cranes.com/>

Inquiries To: