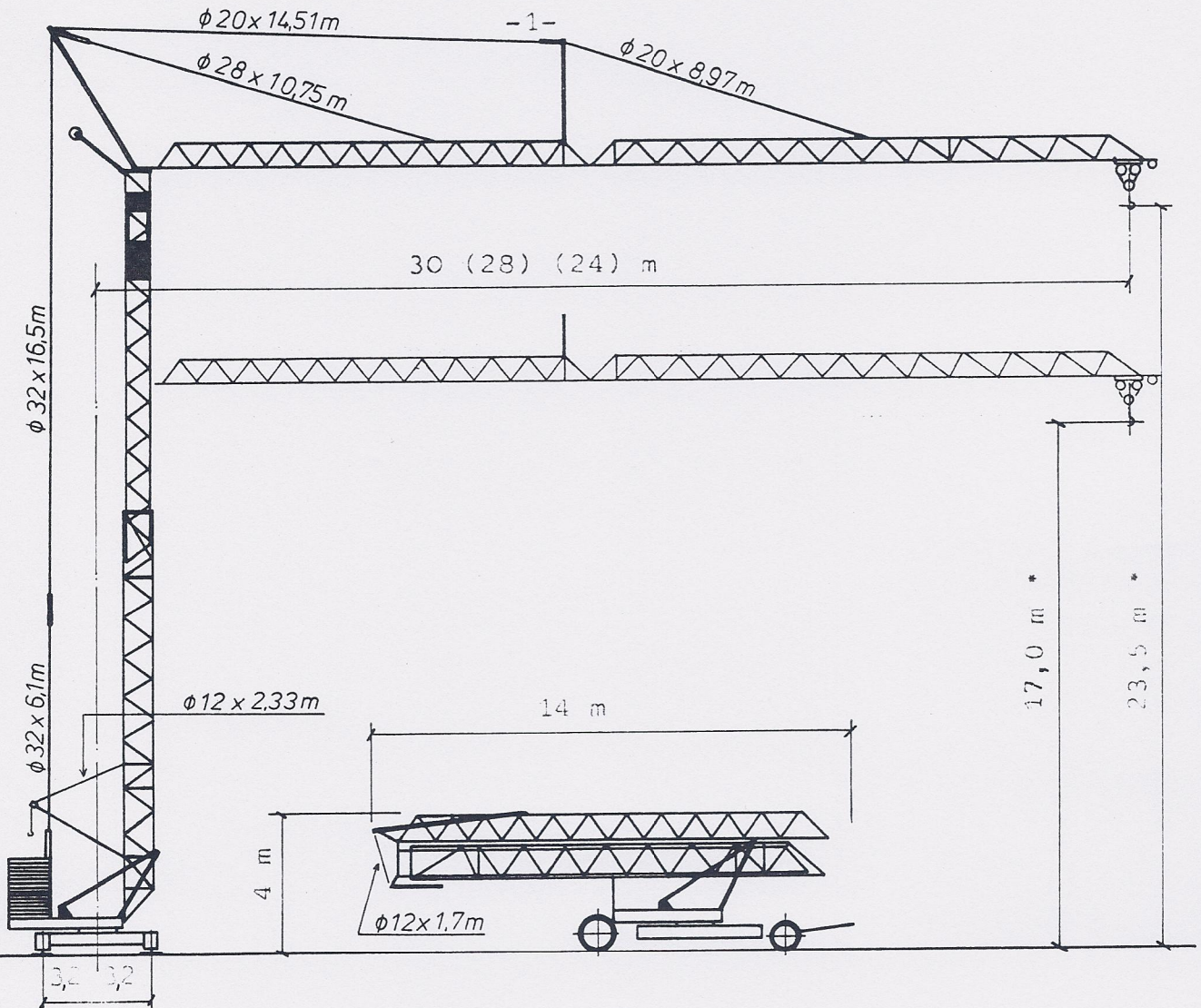


Baudrehkran TK 3008



Baumaschinen
GmbH

Schillerstraße 38 · Tel. 0 63 32 / 7076 - 7077
D-6660 Zweibrücken (Pfalz)



| | m | 11,9 | 13,1 | 14,7 | 16 | 20 | 24 | 28 | 30 | - |
|------------|-----------------|------|-------------------|--|-----------------------|------|-------------------|------|-----|---|
| Ausl. 24 m | kp | | | 2500 | 2250 | 1730 | 1400 | | | |
| " 28 m | kp | | 2500 | | 1950 | 1500 | 1200 | 1000 | | |
| " 30 m | kp | 2500 | | | 1710 | 1310 | 1050 | 870 | 800 | |
| | | 45 | | 1100 | Ges. Motorleistung | | kW | | 23 | |
| | | 22 | | 2500 | Kabelquerschnitt 380V | | 4x10 [□] | | | |
| | | 5 | | 2000 [↑] 2500 [↓] | Kabeltrommel | | m | | 54 | |
| | v = 30 m/min | | Konstruktionsgew. | | kg | | 9000 | | | |
| | v = 30 m/min | | Gegengewicht | | kg | | 16000 | | | |
| | n = 0 - 1 U/min | | Drehradius | | m | | 2,8 | | | |

* gemessen an der Spitze des längsten Auslegers