

E-Crane[®] Capacity Charts

700 Series

Model 4198

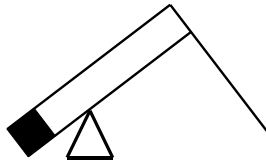
Model 4208

Model 4248

Model 4264

Model 6317





E-Crane[®] Capacity Charts

700 Series

Model 4248

CONTENTS

DUTY CYCLE OPERATION	3
Load Chart (USton/ft)	3
Load Chart (Mton/m)	5
LIFT CRANE OPERATION	7
Load Chart (USton/ft)	7
Load Chart (Mton/m)	9
ISO10567 RATINGS	11
Load Chart (USton/ft)	11
Load Chart (Mton/m)	13
SPECIFICATIONS	15

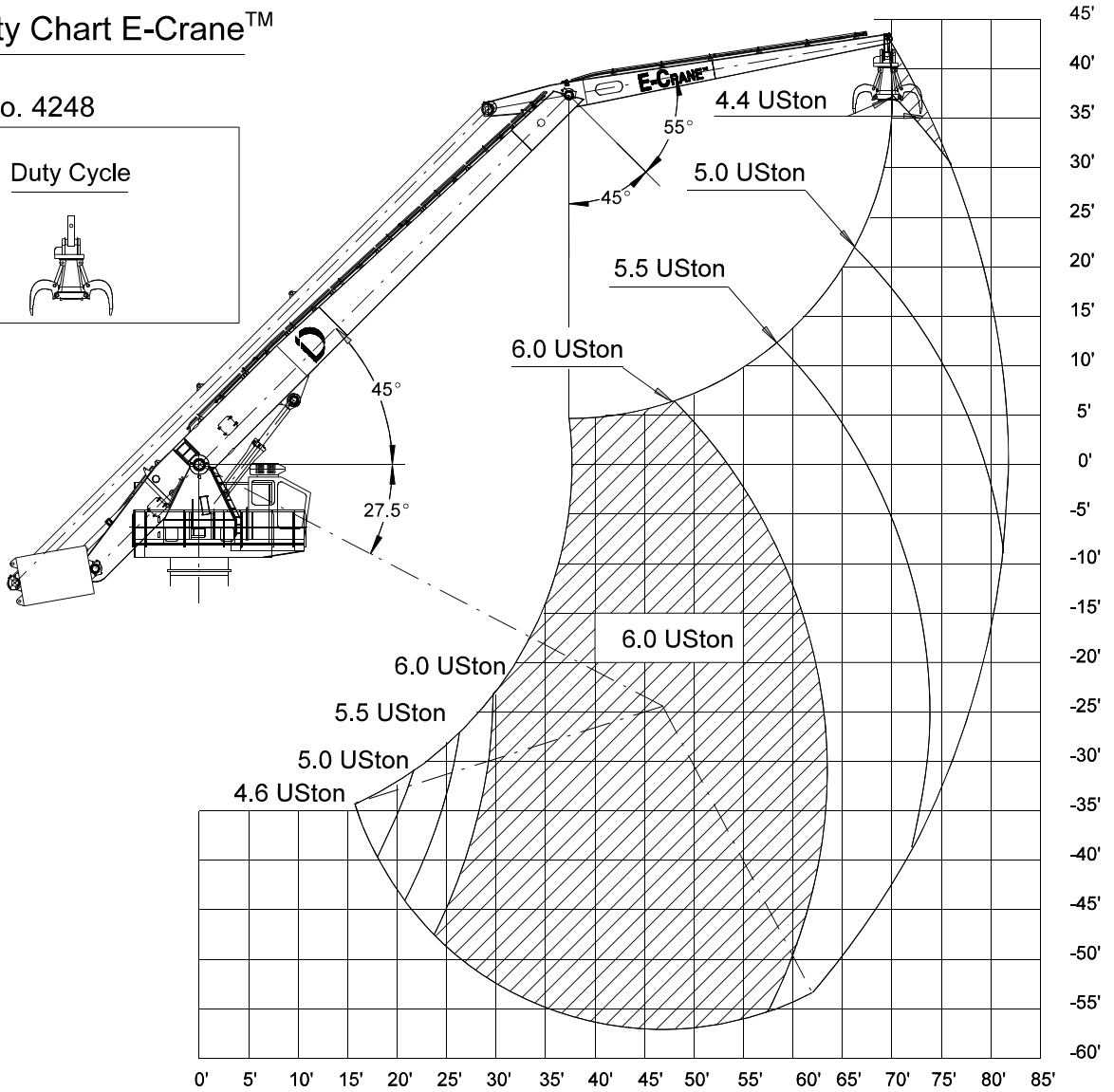
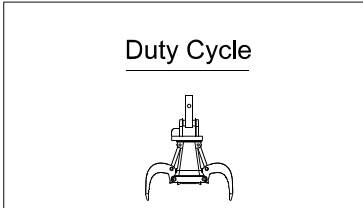


DUTY CYCLE OPERATION

Load Chart (USton/ft)

Capacity Chart E-Crane[™]

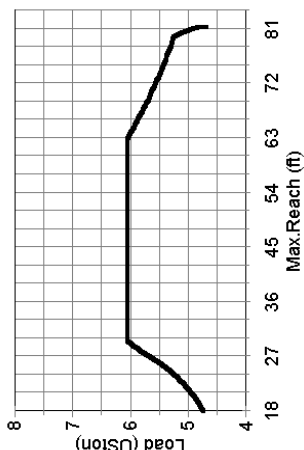
Model No. 4248



docnr.:AL12002-037

**CAPACITY CHART (US ton) / Duty Cycle Operation
E-Crane 4248**

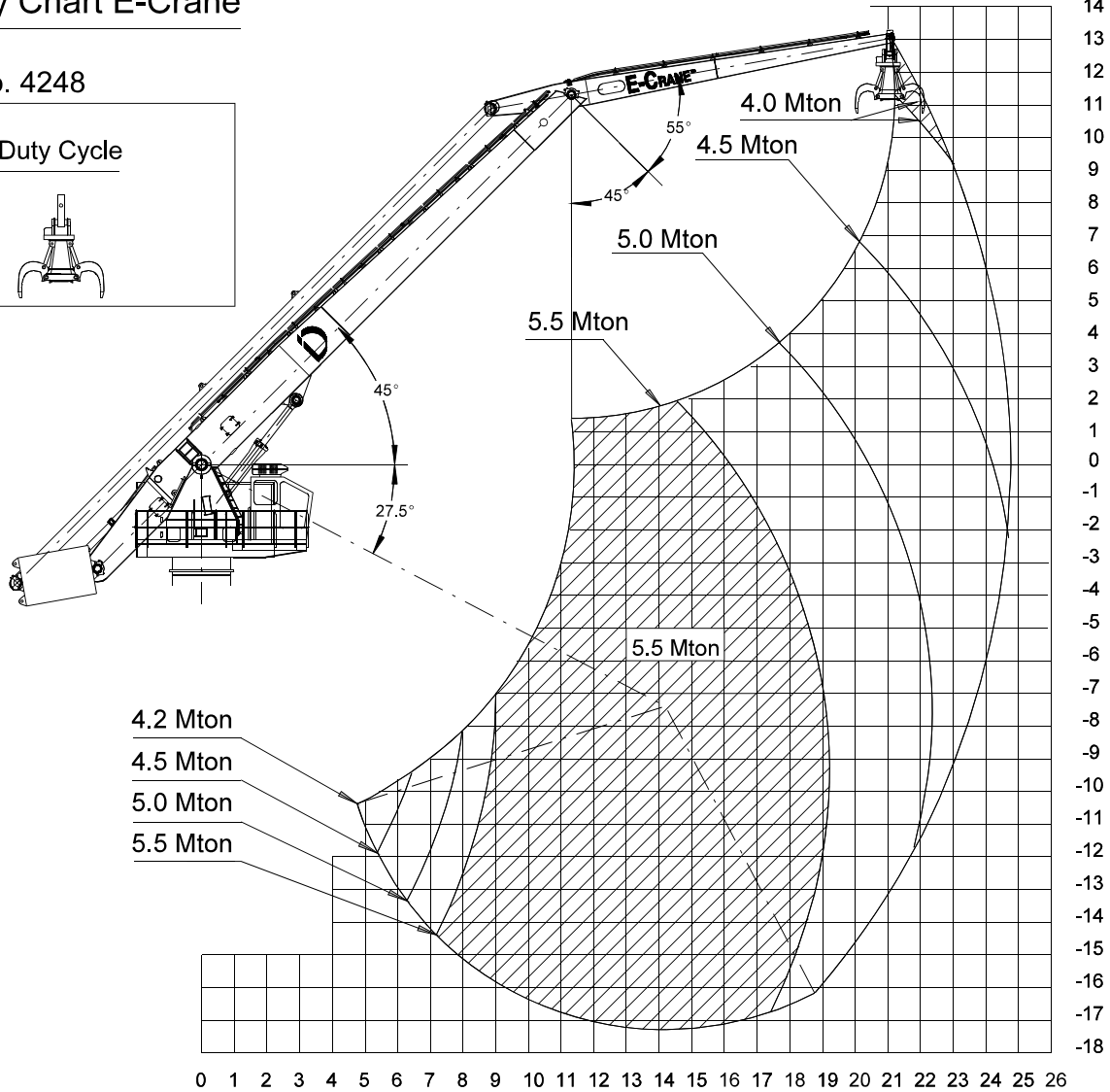
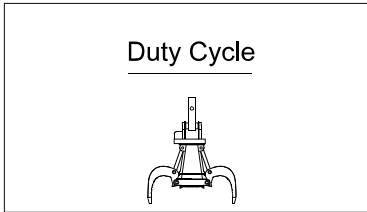
HEIGHT Relative to BOOM- PIN (ft)	REACH (ft)																						
	18	21	24	27	30	33	36	39	42	45	48	51	54	57	60	63	66	69	72	75	78	81	
36																			4,40				
33																			4,41				
30																		4,50	4,43	4,40			
27																		4,60	4,50	4,42			
24																		4,71	4,58	4,48			
21																		5,03	4,85	4,68	4,56	4,44	
18																		5,25	4,98	4,82	4,65	4,50	
15																		5,28	5,19	4,94	4,75	4,58	
12																		5,33	5,26	5,13	4,85	4,65	
9																		5,38	5,32	5,26	4,98	4,75	
6																		5,43	5,36	5,29	5,13	4,85	4,63
3																		5,48	5,39	5,32	5,26	4,98	4,68
0																		5,54	5,45	5,36	5,28	5,08	4,78
-3																		5,58	5,48	5,39	5,32	5,19	4,82
-6																		5,63	5,52	5,43	5,33	5,26	4,90
-9																		5,70	5,61	5,50	5,40	5,29	4,90
-12																		5,80	5,70	5,61	5,50	5,39	4,90
-15																		5,89	5,78	5,68	5,58	5,47	4,90
-18																		6,01	5,86	5,75	5,63	5,52	4,90
-21																		6,05	5,83	5,70	5,58	5,47	4,90
-24																		6,05	5,89	5,75	5,63	5,52	4,90
-27																		6,05	6,05	6,05	6,05	6,05	4,90
-30																		6,05	6,05	6,05	6,05	6,05	4,90
-33																		6,05	6,05	6,05	6,05	6,05	4,90
-36																		6,05	6,05	6,05	6,05	6,05	4,90
-39																		6,05	6,05	6,05	6,05	6,05	4,90
-42																		6,05	6,05	6,05	6,05	6,05	4,90
-45																		6,05	6,05	6,05	6,05	6,05	4,90
-48																		6,05	6,05	6,05	6,05	6,05	4,90
-51																		6,05	6,05	6,05	6,05	6,05	4,90
-54																		6,05	6,05	6,05	6,05	6,05	4,90



Load Chart (Mton/m)

Capacity Chart E-Crane™

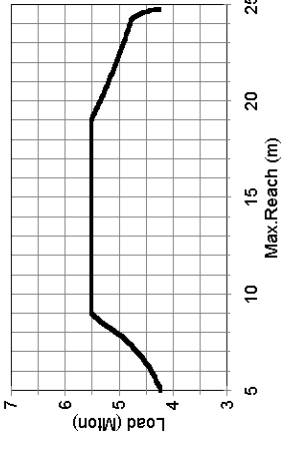
Model No. 4248



Docnr.:AL12002-038

**CAPACITY CHART (Mton) / Duty Cycle Operation
E-Crane 4248**

HEIGHT Relative to BOOM- PIN (m)	REACH (m)																			
	6	7	8	9	10	11	12	13	14	15	16	17	18	19	20	21	22	23	24	
12																				
11																				
10																				
9																				
8																				
7																				
6																				
5																				
4																				
3																				
2																				
1																				
0																				
-1																				
-2																				
-3																				
-4																				
-5																				
-6																				
-7																				
-8																				
-9																				
-10																				
-11																				
-12																				
-13																				
-14																				
-15																				
-16																				
-17																				

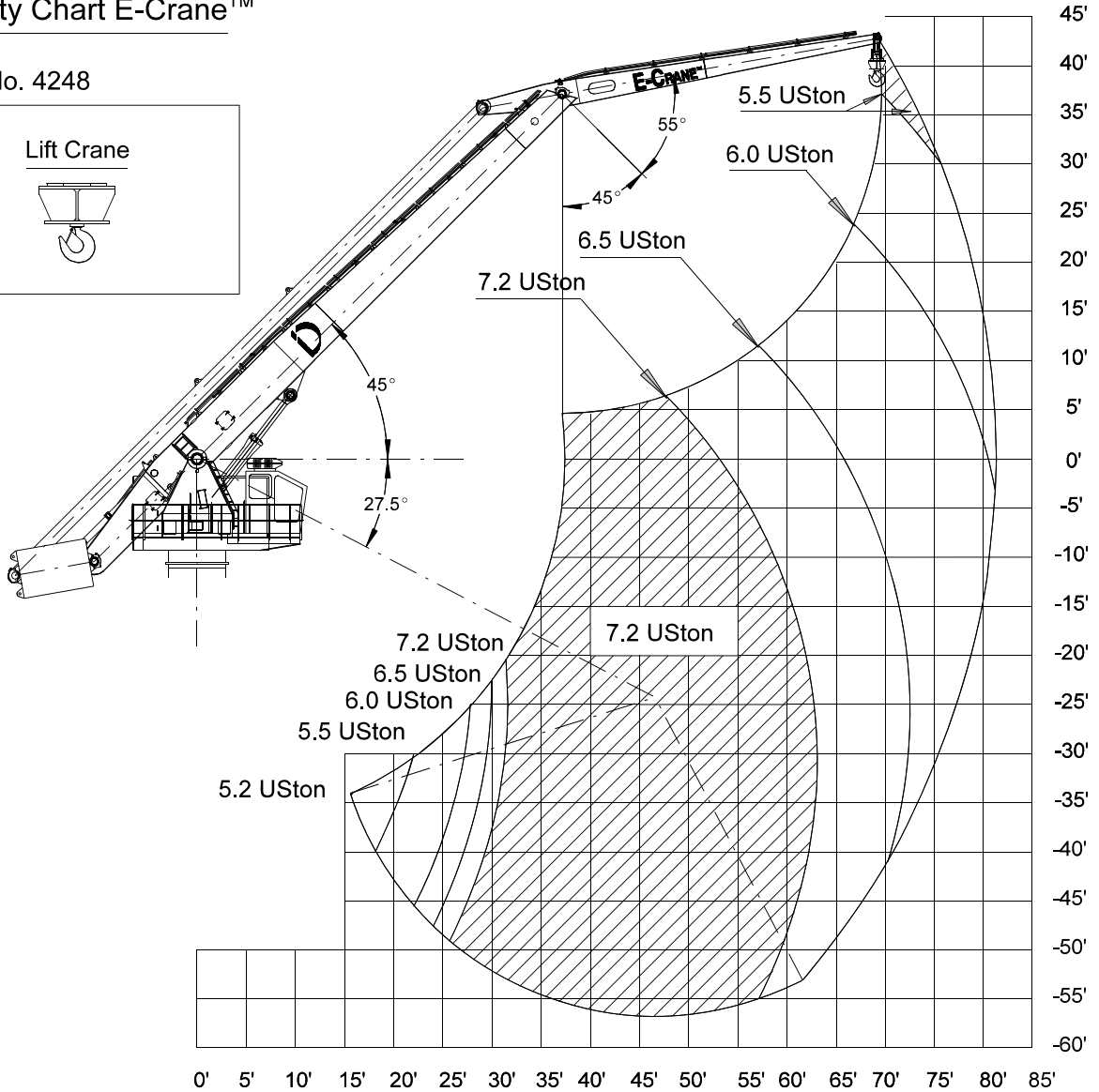
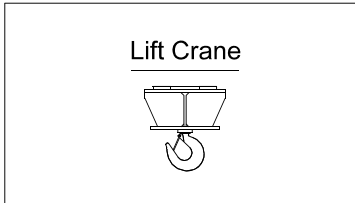


LIFT CRANE OPERATION

Load Chart (USton/ft)

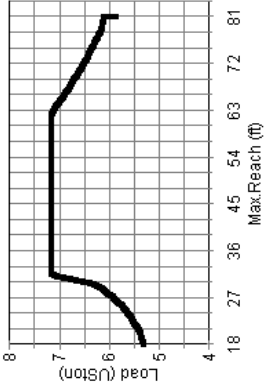
Capacity Chart E-Crane™

Model No. 4248



Docnr.: ALI2002-039

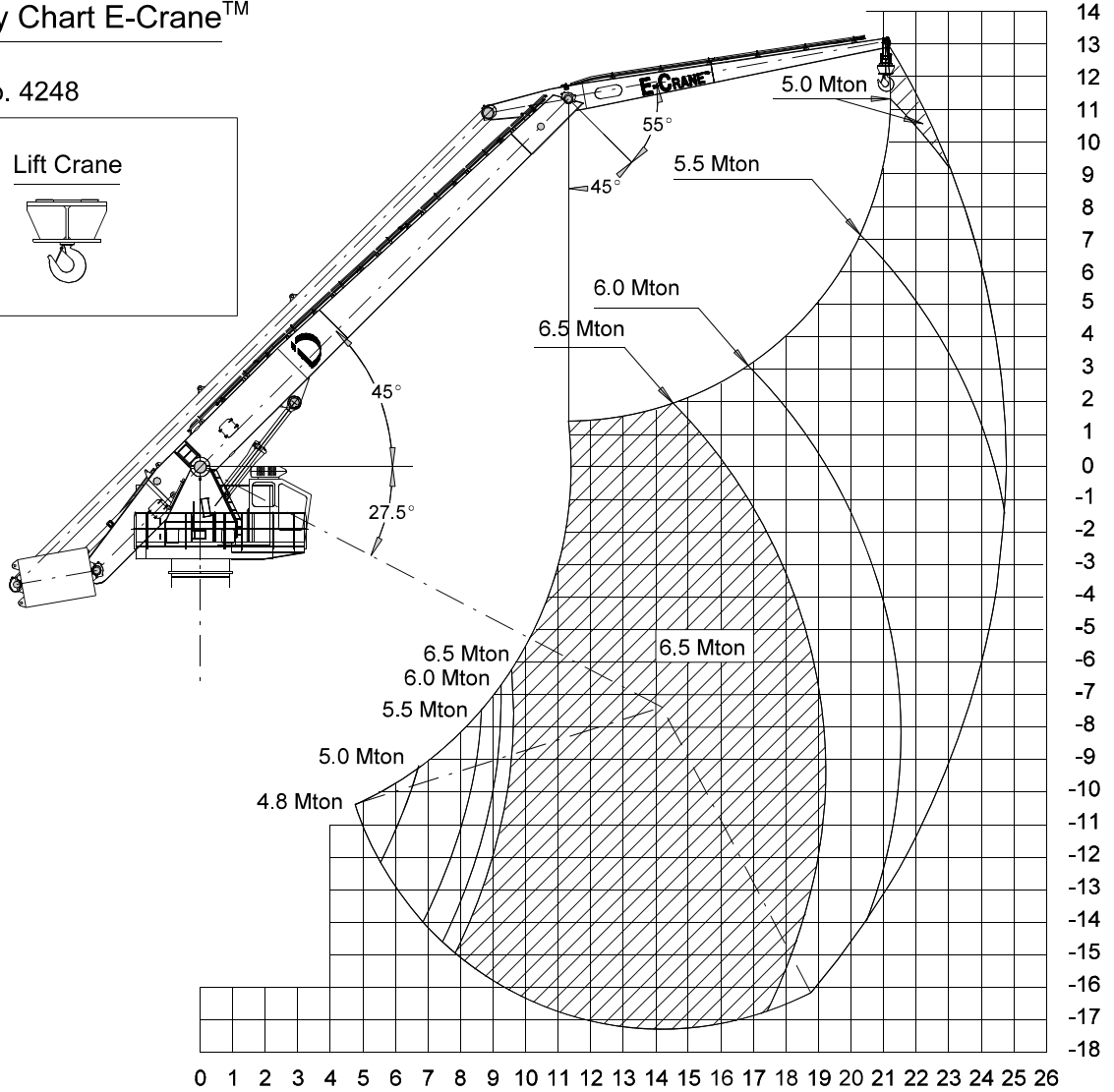
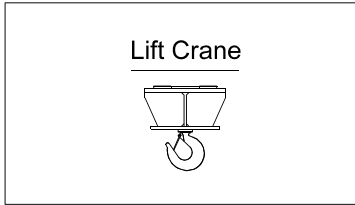
CAPACITY CHART (USton) / Lift Crane Operation E-Crane 4248		REACH (ft)																								
		18	21	24	27	30	33	36	39	42	45	48	51	54	57	60	63	66	69	72	75	78	81			
36																				5,50						
33																				5,51						
30																				5,62	5,54	5,50				
27																				5,75	5,62	5,53				
24																				5,89	5,72	5,60				
21																				6,12	6,07	5,85	5,69	5,55		
18																				6,13	6,11	6,02	5,82	5,62		
15																				6,15	6,13	6,11	5,93	5,72		
12																				6,23	6,15	6,14	6,12	6,07	5,82	
9																				6,31	6,23	6,14	6,12	6,07	5,82	
6																				6,37	6,29	6,21	6,14	6,11	5,93	
3																				6,45	6,35	6,27	6,17	6,12	6,07	5,78
0																				6,55	6,42	6,31	6,21	6,14	6,11	5,85
-3																				6,61	6,50	6,37	6,27	6,15	6,12	5,97
-6																				6,70	6,55	6,42	6,31	6,21	6,13	6,02
-9																				6,77	6,61	6,47	6,35	6,23	6,14	6,10
-12																				6,83	6,70	6,52	6,40	6,27	6,15	
-15																				6,90	6,73	6,58	6,45	6,31	6,17	
-18																				6,98	6,80	6,64	6,47	6,33	6,19	
-21																				7,02	6,83	6,67	6,50	6,35	6,19	
-24																				7,10	6,87	6,70	6,52	6,35	6,19	
-27																				7,15	6,90	6,70	6,52	6,35	6,19	
-30																				7,14	6,90	6,70	6,52	6,35	6,19	
-33																				7,14	6,90	6,70	6,52	6,35	6,19	
-36																				7,14	6,90	6,70	6,50	6,33	6,19	
-39																				7,14	6,90	6,67	6,47	6,33	6,19	
-42																				7,10	6,87	6,64	6,47	6,33	6,19	
-45																				7,06	6,80	6,55	6,35	6,19	6,02	
-48																				6,98	6,73	6,47	6,27	6,15	6,02	
-51																				6,90	6,64	6,37	6,17	6,02	5,85	
-54																				6,77	6,47	6,17	5,93	5,72	5,55	



Load Chart (Mton/m)

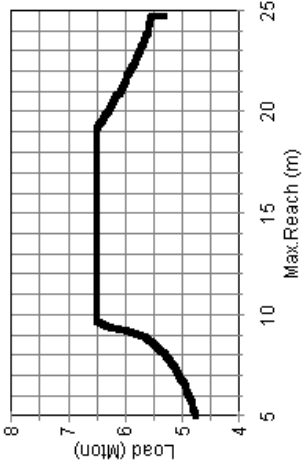
Capacity Chart E-Crane[™]

Model No. 4248



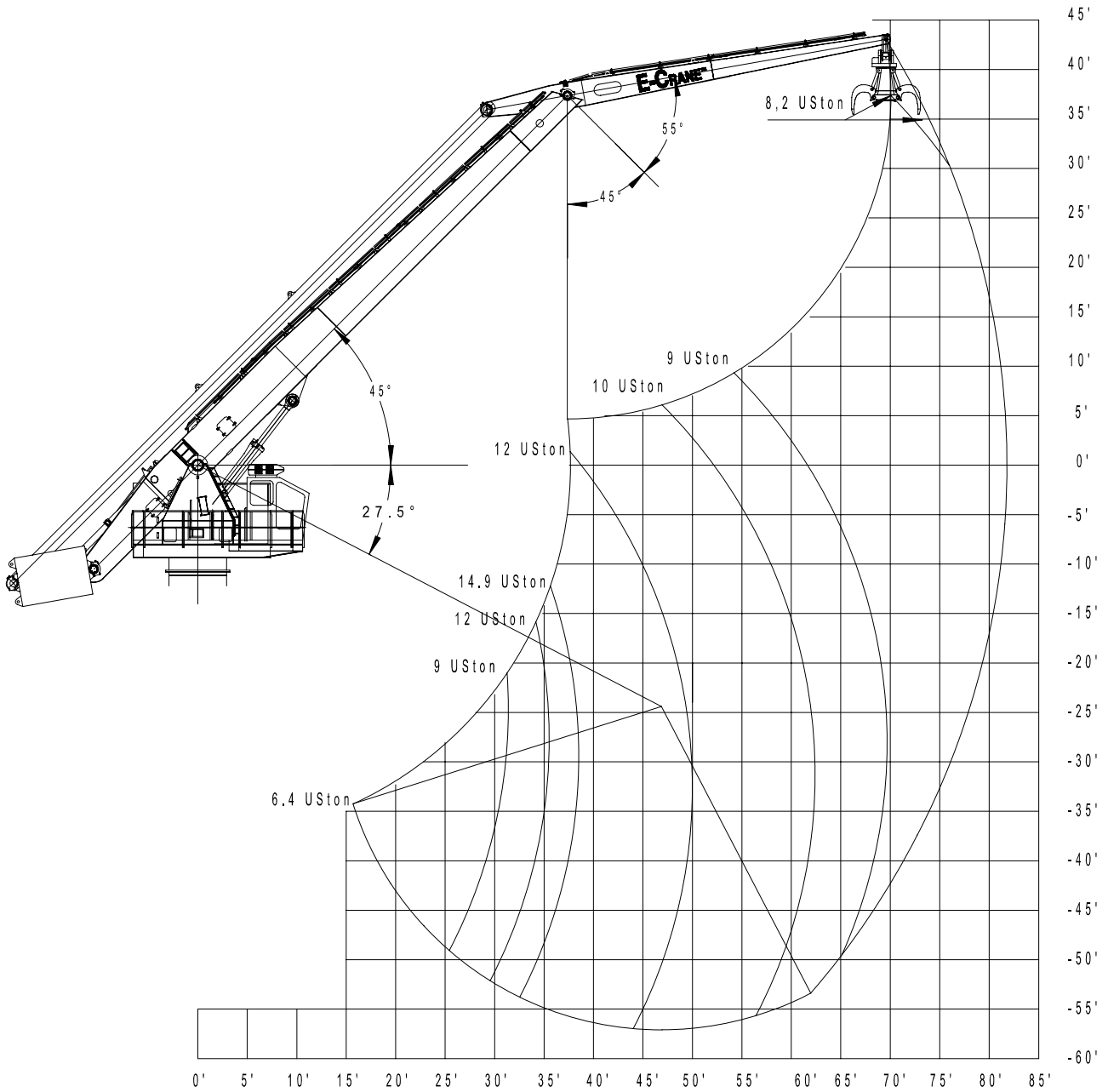
Docnr.:ALI2002-040

		CAPACITY CHART (Mton) / Lift Crane Operation E-Crane 4248																			
		REACH (m)																			
HEIGHT Relative to BOOM- PIN (m)		6	7	8	9	10	11	12	13	14	15	16	17	18	19	20	21	22	23	24	
12																					
11																					
10																					
9																					
8																					
7																					
6																					
5																					
4																					
3																					
2																					
1																					
0																					
-1																					
-2																					
-3																					
-4																					
-5																					
-6																					
-7																					
-8																					
-9																					
-10																					
-11																					
-12																					
-13																					
-14																					
-15																					
-16																					
-17																					



ISO10567 RATINGS

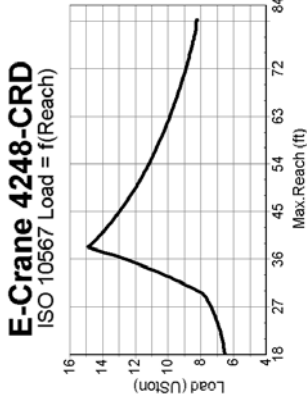
Load Chart (USton/ft)



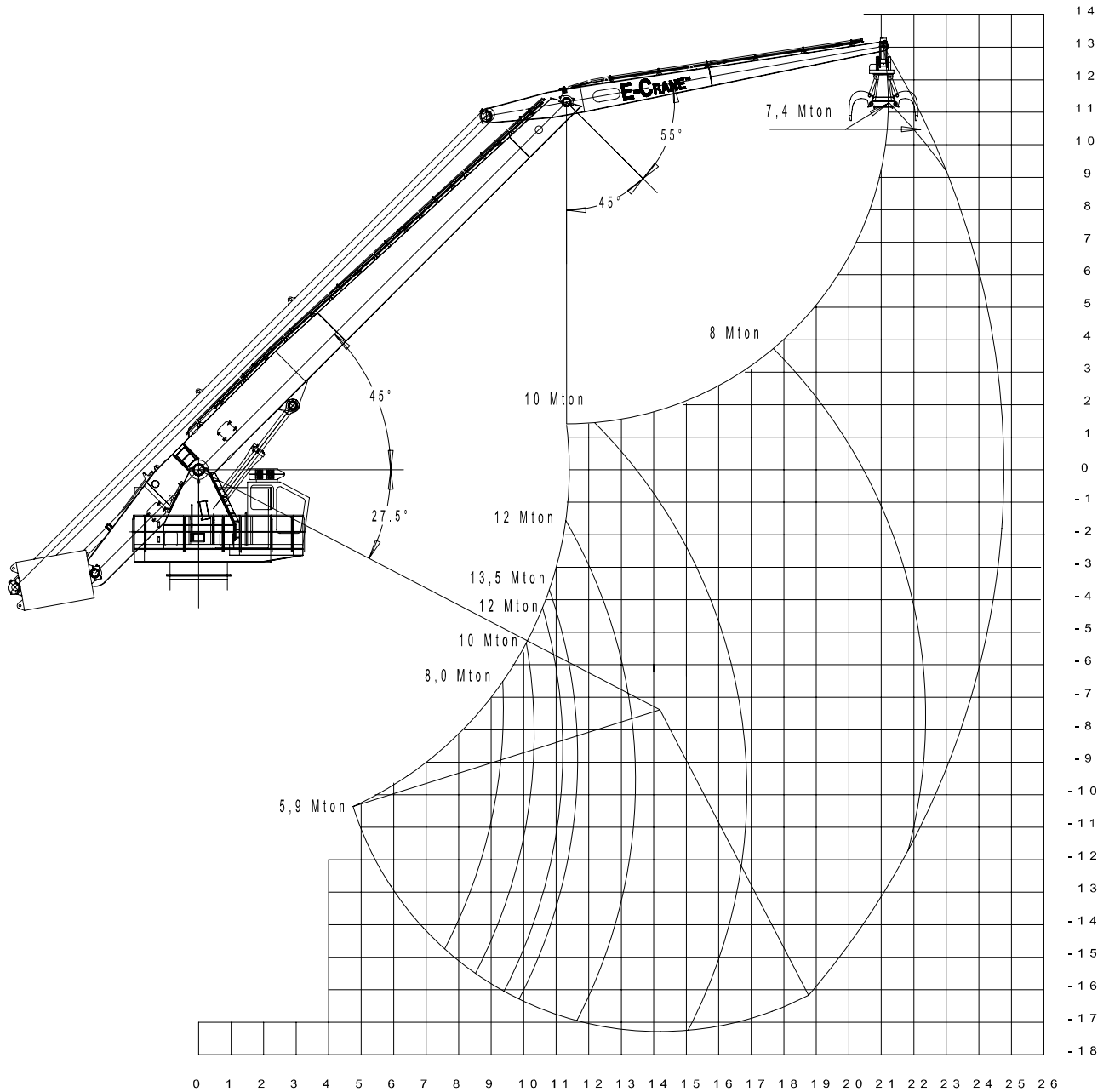
Dwg ALI2009-001

**CAPACITY CHART (USton) / ISO 10567 Ratings
E-Crane 4248-CRD**

HEIGHT Relative to BOOM- PIN (ft)	REACH (ft)																						
	18	21	24	27	30	33	36	39	42	45	48	51	54	57	60	63	66	69	72	75	78	81	
36																			8,19				
33																			8,18				
30																			8,20	8,18			
27																			8,22	8,20	8,18		
24																			8,24	8,21	8,19		
21																			8,27	8,24	8,21	8,19	
18																			8,32	8,29	8,26	8,23	8,20
15																			8,35	8,31	8,28	8,25	8,21
12																			8,46	8,33	8,31	8,27	8,23
9																			8,56	8,43	8,32	8,29	8,25
6																			8,66	8,52	8,38	8,31	8,27
3																			8,73	8,59	8,43	8,32	8,29
0																			9,01	8,80	8,66	8,52	8,38
-3																			9,15	8,97	8,77	8,59	8,43
-6																			9,30	9,06	8,89	8,69	8,52
-9																			9,46	9,20	8,97	8,77	8,59
-12																			9,58	9,30	9,06	8,84	8,66
-15																			9,69	9,41	9,20	8,93	8,73
-18																			9,82	9,52	9,25	9,01	8,80
-21																			9,95	9,63	9,35	9,10	8,84
-24																			10,09	9,69	9,41	9,15	8,89
-27																			10,23	9,82	9,46	9,20	8,93
-30																			10,38	9,82	9,52	9,20	8,93
-33																			10,54	10,16	9,82	9,52	9,20
-36																			10,69	10,30	9,95	9,63	9,35
-39																			10,82	10,43	10,09	9,69	9,41
-42																			10,96	10,57	10,23	9,82	9,52
-45																			11,11	10,71	10,37	9,95	9,63
-48																			11,26	10,85	10,51	10,09	9,69
-51																			11,41	11,00	10,66	10,24	9,82
-54																			11,56	11,15	10,81	10,39	9,97

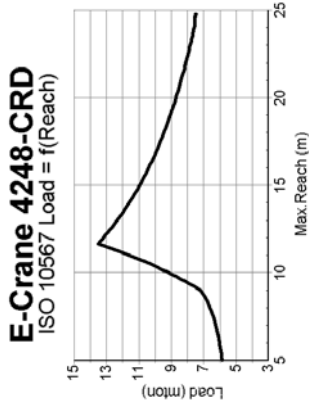


Load Chart (Mton/m)



Dwg ALI2009-002

HEIGHT Relative to BOOM- PIN (m)		CAPACITY CHART (Mton) / ISO 10567 Ratings E-Crane 4248-CRD																	
		REACH (m)																	
6	7	8	9	10	11	12	13	14	15	16	17	18	19	20	21	22	23	24	
12																			
11																			
10																			
9																			
8																			
7																			
6																			
5																			
4																			
3																			
2																			
1																			
0																			
-1																			
-2																			
-3																			
-4																			
-5																			
-6																			
-7																			
-8																			
-9																			
-10																			
-11																			
-12																			
-13																			
-14																			
-15																			
-16																			
-17																			



SPECIFICATIONS

	<i>Specifications English (**)</i>	<i>Specifications Metric (**)</i>
Operating Range:		
Minimum Outreach Range (from centerline of rotation)	15'-7"	4,750 m
Maximum Outreach (from centerline of rotation)	81'-3.3/16"	24,769 m
Downreach Range (below main boom pivot point)	56'-8.5/8"	17,288 m
Lifting Range (vertical lift)	99'-5.3/4"	30,321 m
Boom Operating Angles (above and below horizontal)	+45°/-27.5°	+45°/-27.5°
Stick Operating Angles (before and after vertical)	+55°/-45°	+55°/-45°
Degrees of Rotation	360° continuous	360° continuous
Power:		
Power Supply	3-Phase 480 Volts AC, 60 Hz	3-Phase, 380 Volts AC, 50Hz
Electrical Motor	150 hp	110 kW
Hydraulic Pump Output		
Implement	101.7 gpm	385 L/min
Swing	29.4 gpm	112 L/min
Hydraulic System Relief Setting	3,625 psi	25.000 kPa
Hydraulic Tank Refill Capacity	300 USgal	1.135 L
Dimensions:		
Boom Length	52'-5.15/16"	16 m
Stick Length	32'-5.3/4"	9,9 m
Total Weight Superstructure ^(*)	159,500 lbs	72.500 kg

(*) Operating weight does not include lubricants, hydraulic oil, bucket and operator

(**) Materials and specifications are subject to change without notice.

See your E-Crane[™] dealer for available options.