

WELDCO HYDRA-LIFT

Hydra-lift WHL40TC75

The Weldco **WHL40TC75** offers a three-section 75 ft fully proportional boom. The tapered rear sub frame is compatible with a fifth wheel installation, allowing the operator the ability to haul material directly to and from the job-site. A comfortable and fully equipped operator swing-cab is standard equipment.

Features:

- 40 Ton lifting capacity
- 85' tip height (fully extended)
- 3 section 75' fully proportional boom
- 30' retracted length
- Continuous rotation
- 15,000 lb, 2 speed grooved drum planetary winch
- Tapered rear subframe for fifth wheel installation
- Out and down outriggers

Benefits:

- High strength box construction, welded booms for maximum strength to weight ratio
- Planetary type winch with integral brake for high efficiency and security

Optional Equipment:

- Fixed swing around jib, stows along side of boom
- Snatch block and crane blocks for multi-part line operation
- Hydraulic tank heater
- Digital radio weight indicator
- Boom lights


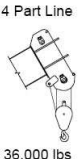
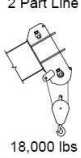
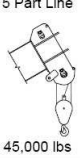
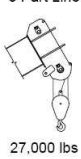
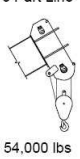


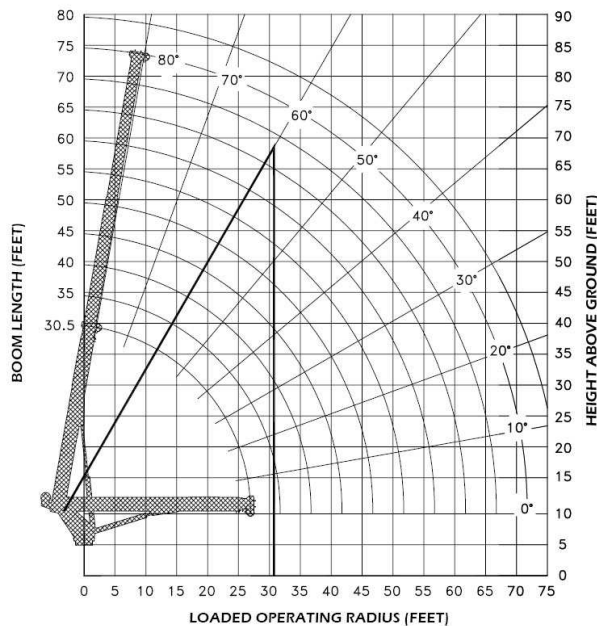
FEATURES AND SPECIFICATIONS

MAXIMUM RATED LOAD IN LBS. WITH OUTRIGGERS FULLY EXTENDED												
LOADED OPERATING RADIUS	LOADED BOOM ANGLE	RETRACTED BOOM LENGTH	LOADED BOOM ANGLE	BOOM LENGTH	LOADED BOOM ANGLE	BOOM LENGTH	LOADED BOOM ANGLE	BOOM LENGTH	LOADED BOOM ANGLE	BOOM LENGTH	LOADED BOOM ANGLE	EXTENDED BOOM LENGTH
FEET	<°	30' 2"	<°	35 ft	<°	45 ft	<°	55 ft	<°	65 ft	<°	74' 8"
5	75	80,000										
8	69	71,000	72	45,000								
10	65	65,000	68	45,000	73	50,000	76	45,000				
12	60	58,000	65	45,000	71	50,000	74	45,000	77	35,000		
15	54	46,000	59	42,500	66	44,000	71	38,000	74	32,000	76	30,000
20	40	33,500	49	32,800	59	33,500	65	32,000	69	29,000	72	26,000
25	21	25,500	37	25,600	52	26,000	60	25,000	65	23,000	68	22,000
30			21	20,100	43	21,000	53	20,000	60	19,500	64	19,000
35					32	17,000	46	17,000	54	16,000	59	15,500
40					17	14,000	39	14,000	49	13,500	55	13,500
45							29	12,000	42	12,000	50	12,000
50							15	10,500	35	10,500	45	10,500
55									27	9,000	39	9,000
60									14	8,000	33	8,000
65											24	7,000
70											12	6,500

RATINGS ABOVE THE HEAVY LINE ARE BASED ON STRUCTURAL COMPETENCE AND NOT ON MACHINE STABILITY.

NOTE Deductions must be made from rated loads for lifting accessories: Fixed jibs, telescopic jibs, overhaul balls, load hooks, snatch blocks and load blocks.

Maximum Loads 5/8" Cable	
1 Part Line  9,000 lbs	4 Part Line  36,000 lbs
2 Part Line  18,000 lbs	5 Part Line  45,000 lbs
3 Part Line  27,000 lbs	6 Part Line  54,000 lbs



**Capacity Chart
WHL40TC75**