

# UNIC Truck Crane



## Model UR1543 by SPYDERCRANE.com, LLC



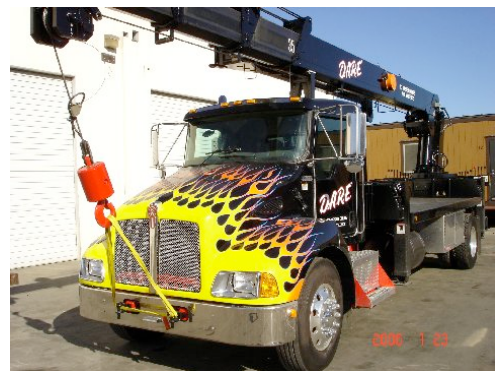
Capacity 30,000 lbs. - at 4ft



Boom Length 43ft. - Retracted 15.5 ft.



Rear Mount or Behind the Cab Mount



26,000 GVWR with Great Hauling Capacity

**WORLD CLASS QUALITY FROM JAPAN. INDUSTRY DESIGN LEADER.**



Operator's Platform



Remote Control



Mounting Bolts

# UNIC Truck Crane

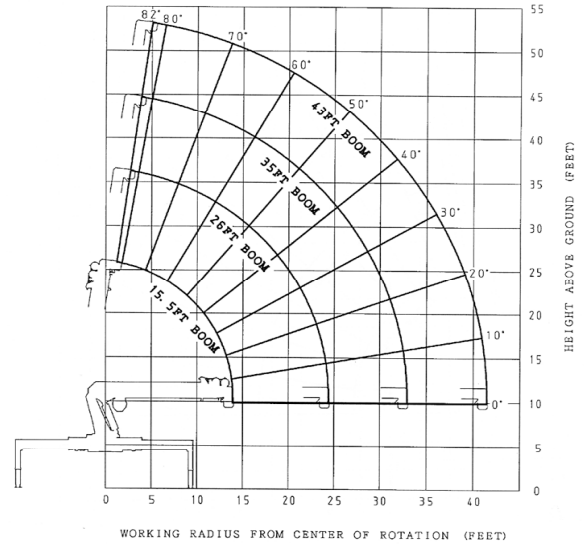


## Model UR1543 by SPYDERCRANE.com, LLC

### Performance Specifications

### Boom Range Diagram

Model U1543 Telescopic Boom Design	
Maximum Lift Capacity	30,000 lbs. @4 ft.
Lift Capacity @ 10 Feet	14,500 lbs.
Lift Capacity @ 20 Feet	6,800 lbs.
Lift Capacity @ 40 Feet	2,100 lbs.
Tip Height	54 feet
Working Radius	3 feet to 41.4 feet
Boom Length	15.5 feet to 43 feet
Boom Sections	Four (4)
Swing Rotation	360° Continuous
Out & Down Outriggers	Two Main – Two Auxiliary
Operating Weight	9,105 lbs.
Minimum Chassis	26,000 GVWR



### Model UR1543 Load Chart

	All Booms Retracted	Second Stage Extended	Third Stage Extended	Fourth Stage Extended
<b>Boom Radius</b>	<b>15.5 feet</b>	<b>26 feet</b>	<b>35 feet</b>	<b>43 feet</b>
4	30000	14500		
5	24000	14500	11000	
8	16500	14500	11000	11000
10	14500	14500	11000	11000
12	11000	11500	11000	11000
15		9400	9500	9500
20		6800	7000	7000
25			5500	5700
30			4000	4700
35				3700
40				2100
Zero Degrees	5500	2800	1700	1100
Radius	13.9 ft	24.4 ft	32.9 ft	41.4 ft