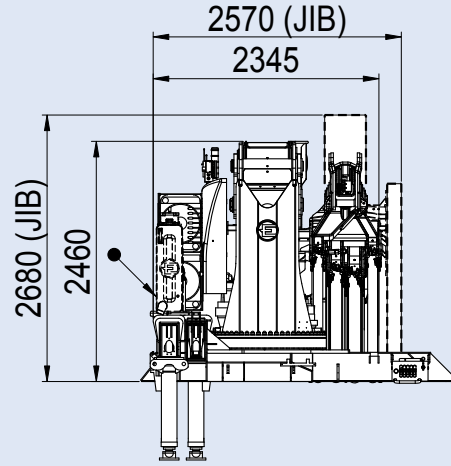
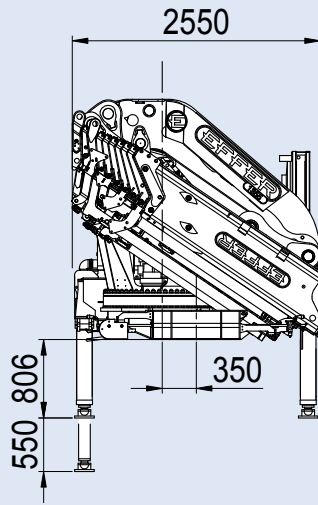


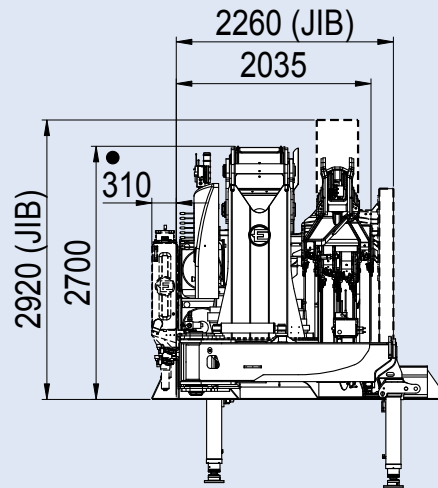
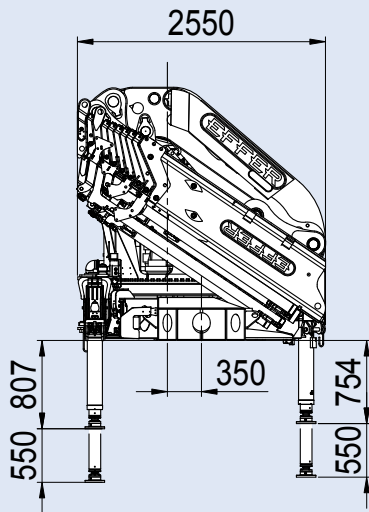
1355 STD



- Ingombro serbatoio installato
- Fitted tank size
- Abmessungen installierten Behälters

[mm]

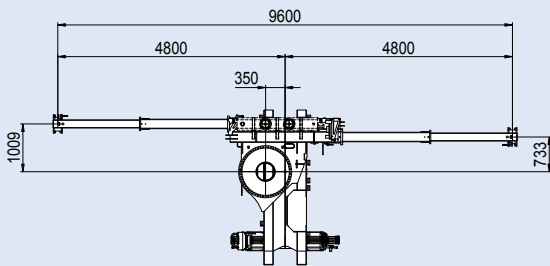
1355 croStab®



- Ingombro serbatoio installato
- Fitted tank size
- Abmessungen installierten Behälters

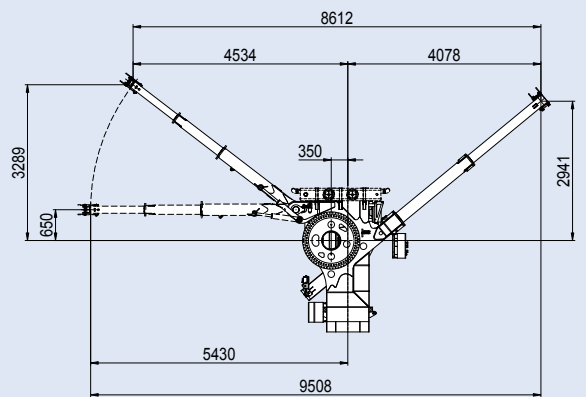
[mm]

1355 STD









[mm]

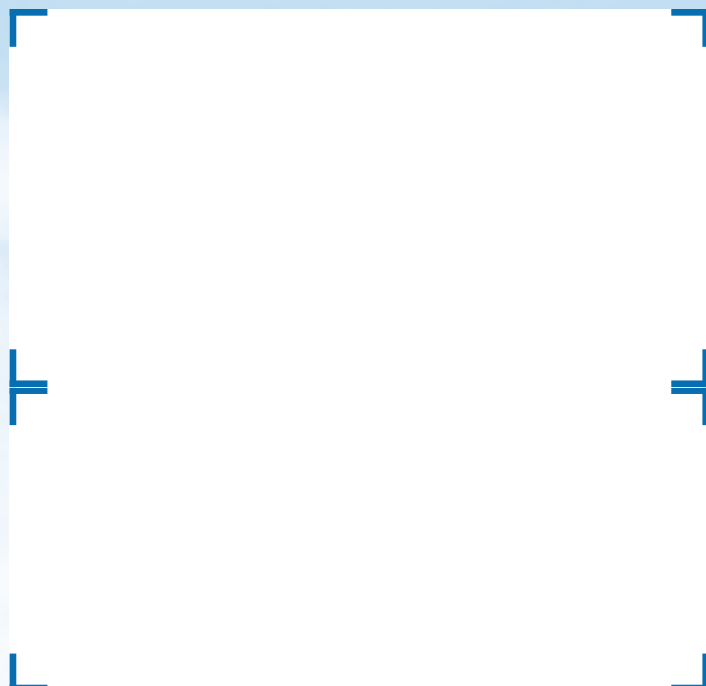
1355 croStab®



[mm]

EFFER 1355		Descrizione Description Beschreibung	Unità di Misura Unit of measure Maßeinheit	4S*	6S	7S	8S	9S
	Massimo sbraccio idraulico orizzontale Max. hydraulic outreach Max. hydraulische Reichweite waagerecht		m	11,63	15,23	17,45	19,76	22.19
			ft	38' 1"	49' 11"	57' 3"	64' 9"	72' 9'
	Momento massimo di sollevamento (+20°) Max. lifting moment (+20°) Max. Hubmoment (+20°)		kgm	98000	94500	93930	93610	93320
			kNm	961,40	927,00	921,40	918,30	915,40
			lb*ft	709080	683750	679630	677310	675210
	Angolo di rotazione Slewing arc Schwenkbereich		(°)	continua / endless / endlos				
	Pendenza massima lavoro Maximum working slope Max. Arbeitsneigung		(°)	5				
	Pressione d'esercizio Working pressure Betriebsdruck		bar	355				
			p.s.i.	5149				
	Portata d'olio consigliata Recommended oil delivery Empfohlene Ölfördermenge		l/min	200				
			gpm	52,8				
	Capacità serbatoio olio Oil tank capacity Öltankkapazität		l	360				
			gal.	95				
	Peso gru standard (± 2%) Weight of the standard crane (± 2%) Gewicht des Standardkranes (± 2%)		kg	9960	10680	11025	11320	11630
			lb	21955	23545	24305	24955	25635

* Versione speciale disponibile su richiesta / Special version available on request / Sonderausführung auf Anfrage vorhanden



Sol.Ge. S.p.A.
Via Bonazzi, 12/14 - 40013 Castel Maggiore (BO) - I
tel. +39 051 4181211 - fax +39 051 701492
web: www.effer.it - e-mail: info@effer.it
EFFER is part of the CTE group



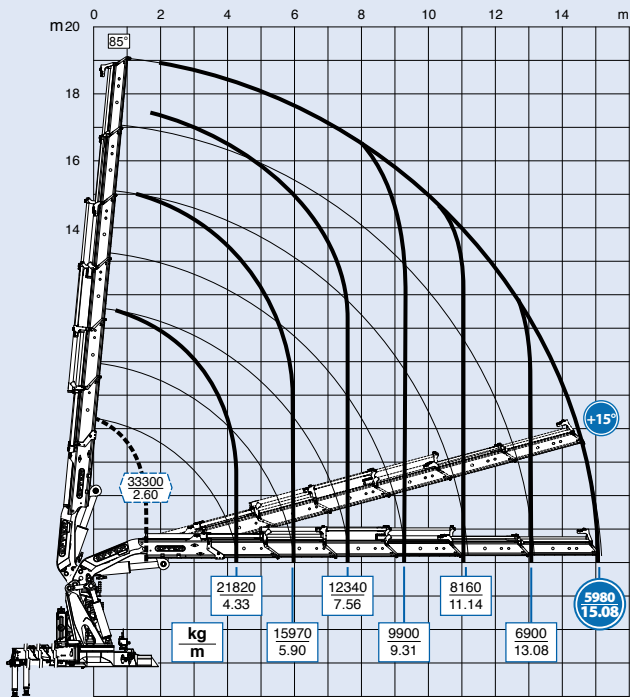
EFFER

THE POWER OF PERFORMANCE

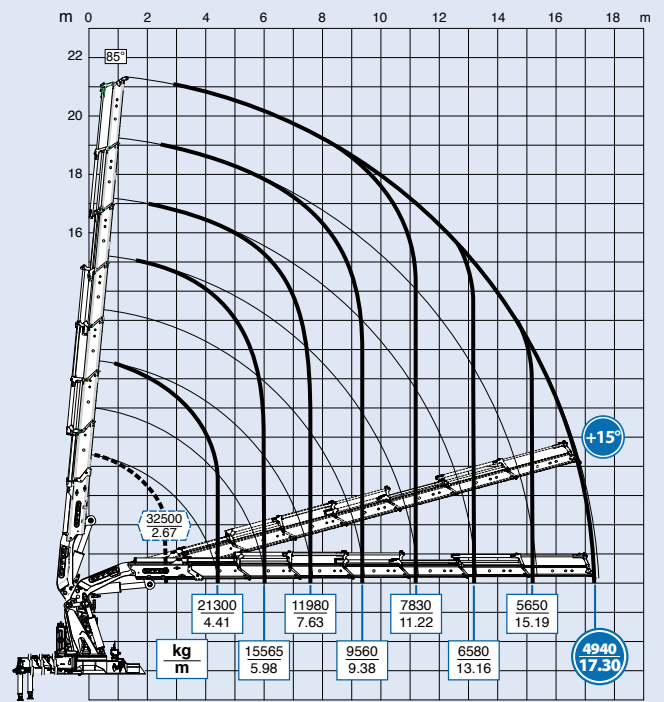
1355



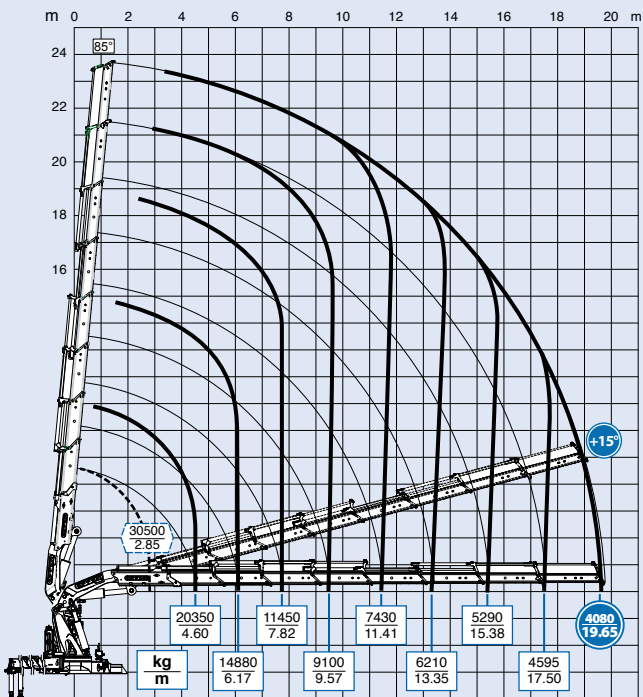
6S



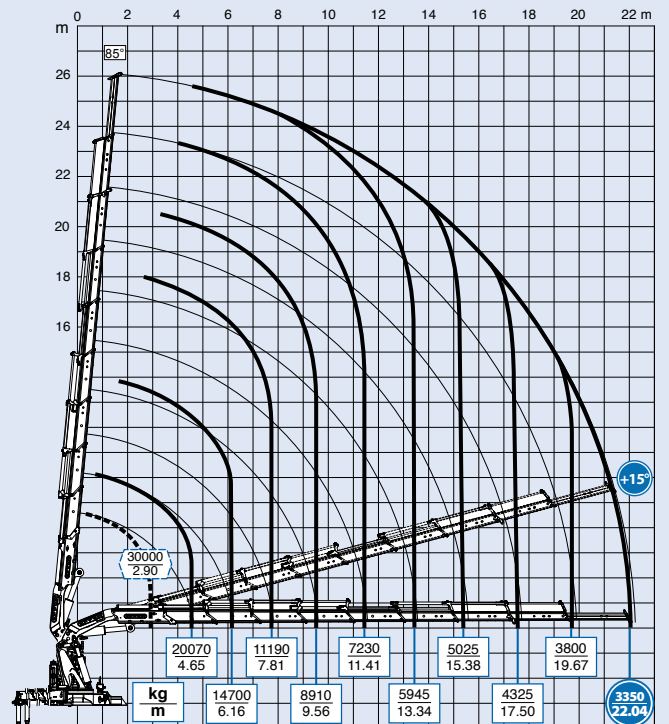
7S



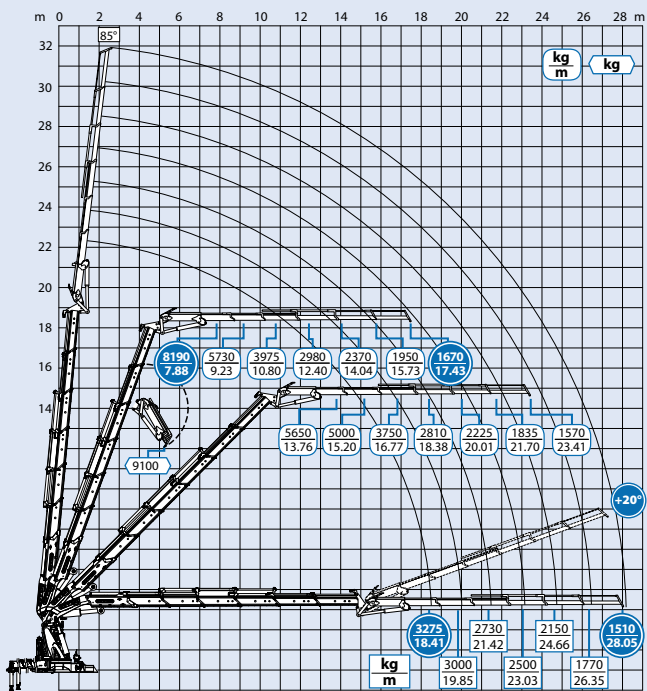
8S



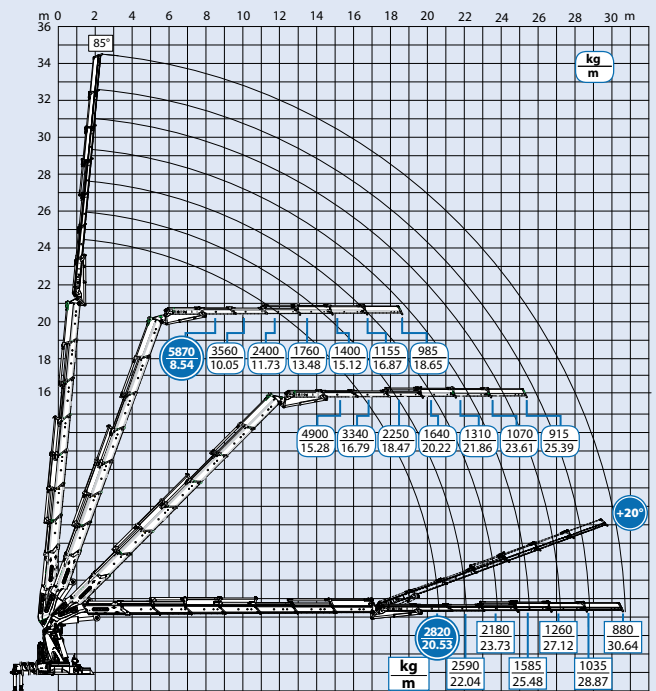
9S



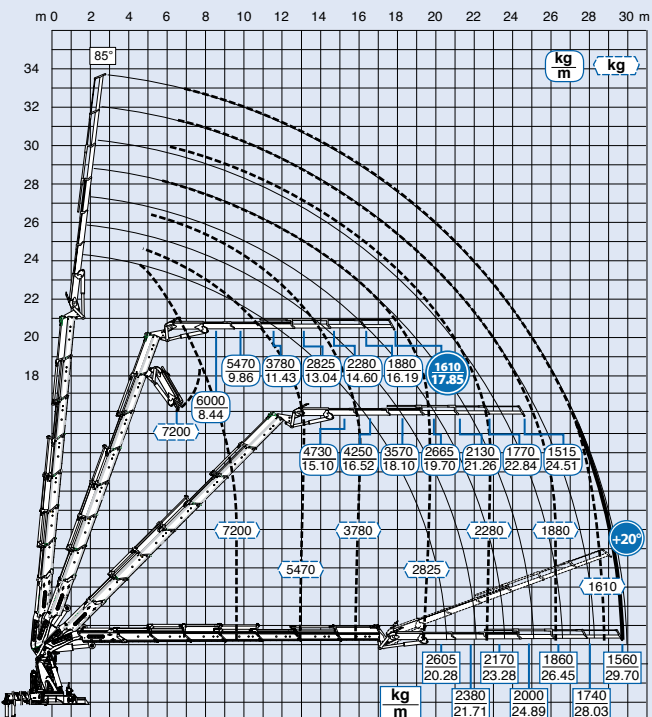
6S + JIB 6S



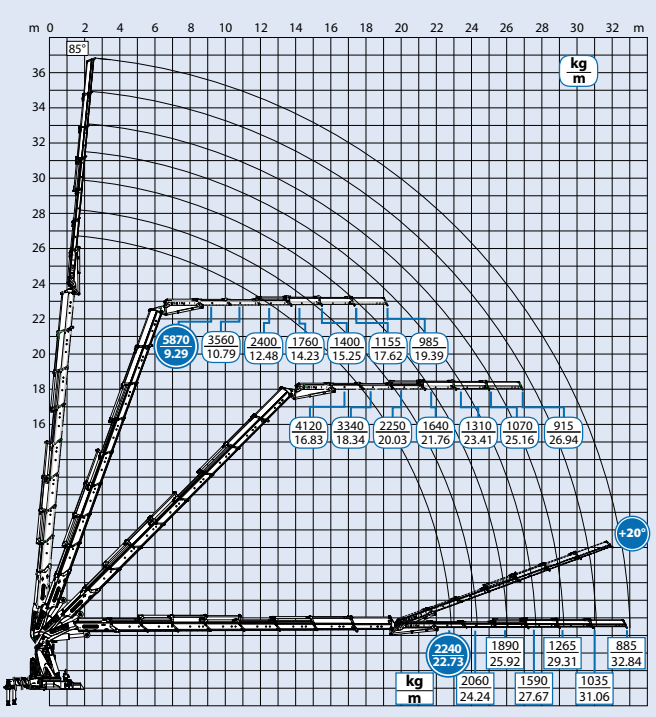
7S + JIB 6S light



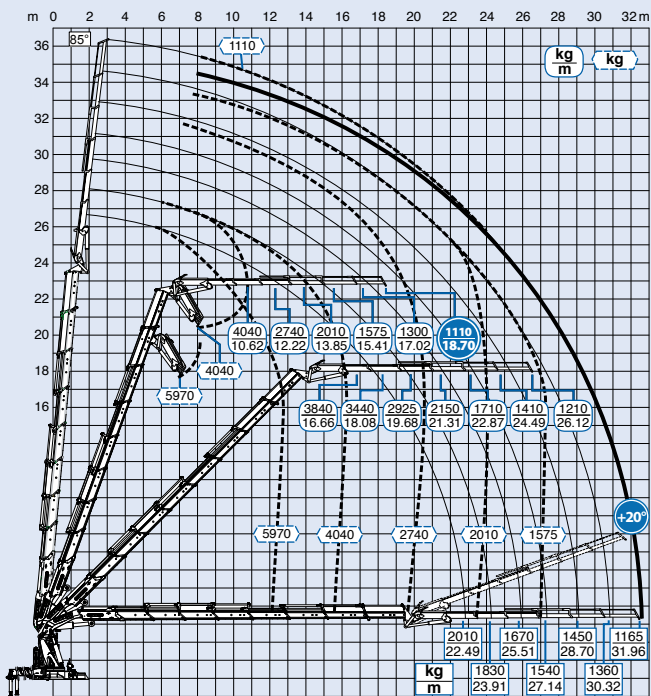
7S + JIB 6S heavy duty



8S + JIB 6S light



8S + JIB 6S heavy duty



GRU PROGETTATA SECONDO NORME UNI EN 12999 / H1 B3

ATTENZIONE: Le versioni di sfilo e le attrezzature riportate nel dépliant non sono esaustive. Per i dati completi fare riferimento alle Info-Tech disponibili presso il concessionario di zona o scaricabili dal sito www.effer.it. Alcune delle immagini riportate nel dépliant possono rappresentare gru con dotazioni non di serie. Per maggiori informazioni sulle configurazioni di macchina disponibili si rimanda alle Info-Tech. Capacità di sollevamento secondo potenza massima della gru. La stabilità dell'autocarro può richiedere il declassamento. Per maggiori dettagli tecnici sulle prestazioni e condizioni di utilizzo si rimanda alle Info-tech.

ATTENZIONE: In seguito ad aggiornamenti tecnici i dati indicati possono subire modifiche.

CRANE DESIGNED ACCORDING TO THE STANDARDS UNI EN 12999 / H1 B3

NOTE: The booms versions and accessories mentioned in this brochure are not the only ones available. For the complete data, you are kindly invited to look them up in the 'Info-tech' section available at your nearest Effer dealer or to download them from the website www.effer.it. Some of the pictures of this catalogue might show cranes versions or accessories that are not available as a standard. For more information you are kindly invited to check them up in the 'Info-tech' section. Lifting capacity is based on the maximum lifting power of the crane. The stability of the vehicle may command a crane downgrading. For more technical details on the crane performances and operation you are kindly invited to look it up in the 'Info-tech' section.

NOTE: Technical modifications may change the stated data.

KRANENTWURF LAUT UNI EN 12999 / H1 B3 VORSCHRIFTEN

NOTE: Die hier veranschaulichten Ausführungen von Ausschüben und Zubehör decken die ganze Produktpalette nicht. Für die fehlenden technischen Daten wenden Sie sich bitte an Ihren Effer-Vertreter oder besuchen Sie bitte die Website www.effer.it. In einigen Fällen könnten besondere Kranversionen oder Ausrüstungen abgebildet sein, die als Standardausstattung nicht lieferbar sind. Für weitere Informationen prüfen Sie bitte den "Info-Tech" Abschnitt. Die Traglasten wurden anhand der max. Hubleistung des Kranes berechnet. Aus Standsicherheitsgründen könnte es notwendig sein, die Traglastkapazitäten zu verkleinern. Beziehen Sie sich bitte auf den "Info-Tech" Abschnitt für zusätzliche Auskünfte über Leistungen und Betrieb des Gerätes.

NOTE: Die angeführten Daten können wegen technischer Abänderungen modifiziert werden.

