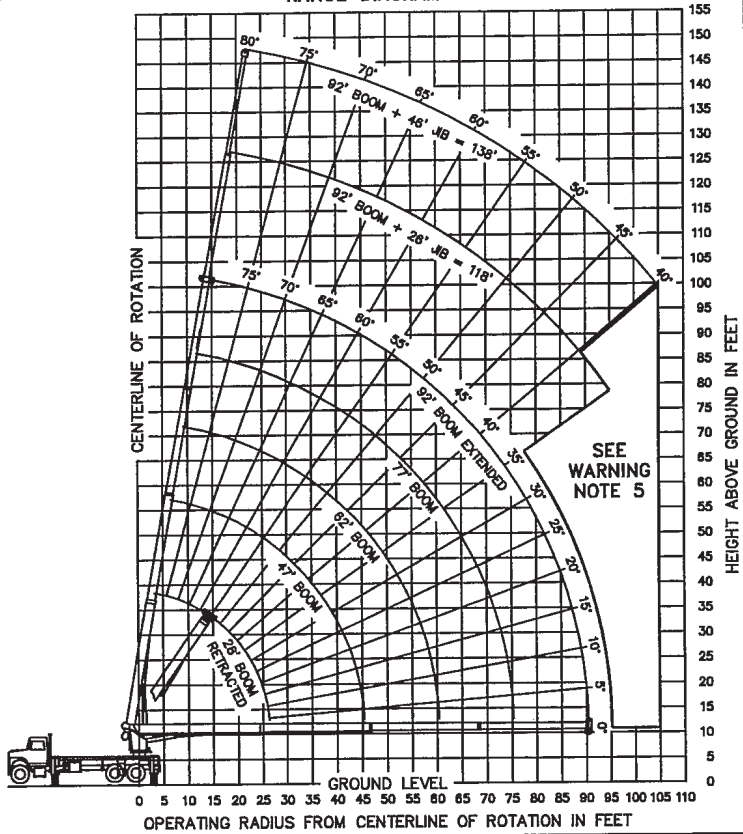


RANGE DIAGRAM



LOAD RATINGS IN LBS WITH OUTRIGGERS AND STABILIZERS EXTENDED

OPERATING RADIUS IN FEET	LMI CODE #1					LMI CODE #2			LMI CODE #3			LMI CODE #4						
	LOADING BOOM ANGLE		BOOM LENGTH			BOOM ANGLE			BOOM ANGLE			BOOM ANGLE						
	28 FT	47 FT	62 FT	77 FT	92 FT	26 FT	26 FT	46 FT	26 FT	26 FT	46 FT	26 FT	26 FT	46 FT				
5	79	50000																
8	72	37800																
10	68	32000	78	20500														
12	63	27720	75	20500	79	20500												
15	56	23090	71	20500	77	18300	80	15000										
20	42	17240	65	15960	72	14800	76	12700	79	9900								
25	21	12550	58	12930	67	11980	72	10900	76	8680	25	79	5500	79	5300			
30			50	9990	62	10060	68	9250	73	7740	30	77	5000	77	4850	79	3400	
35			41	7960	56	8070	64	7970	70	6760	35	75	4610	75	4350	77	3300	
40			30	6470	50	6590	60	6650	66	5920	40	72	4160	72	3900	76	3200	
45					43	5460	55	5520	63	5230	45	70	3750	70	3480	74	3040	
50					36	4570	50	4630	59	4630	50	67	3380	67	3110	72	2780	
55					26	3840	45	3910	55	3950	55	65	3070	65	2800	69	2520	
60								39	3320	51	3360	60	62	2790	62	2500	67	2280
65								32	2760	46	2810	65	59	2530	59	2250	65	2070
70								24	2290	42	2340	70	56	2270	56	1970	62	1880
75										36	1940	75	53	2030	53	1720	60	1710
80										30	1600	80	50	1720	50	1430	58	1550
85										22	1300	85	46	1420	46	1130	55	1420
90												90	42	1160	42	870	52	1280
95												95	38	930	38	630	49	1080
100												100					46	870
105												105					43	680
						460 LBS.	270 LBS.	210 LBS.	170 LBS.	140 LBS.	DEDUCTIONS FOR STOWED FIXED JIB							
						690 LBS.	410 LBS.	310 LBS.	250 LBS.	210 LBS.	DEDUCTIONS FOR STOWED TELESCOPIC JIB							

WARNING

1. THE OPERATOR MUST READ AND UNDERSTAND THE OWNER'S MANUAL BEFORE OPERATING THIS CRANE.
2. POSITIONING OR OPERATION OF CRANE BEYOND AREAS SHOWN ON THIS CHART IS NOT INTENDED OR APPROVED EXCEPT WHERE SPECIFIED IN OWNER'S MANUAL.
3. LOADED BOOM ANGLES AT SPECIFIED BOOM LENGTHS GIVE ONLY AN APPROXIMATION OF THE OPERATING RADIUS. THE BOOM ANGLE BEFORE LOADING SHOULD BE GREATER TO ACCOUNT FOR DEFLECTIONS. DO NOT EXCEED THE OPERATING RADIUS FOR RATED LOADS.
4. THE OPERATING RADIUS SHOWN IN THE JIB RATING CHART IS FOR FULLY EXTENDED BOOM ONLY. WHEN BOOM IS NOT FULLY EXTENDED, USE ONLY LOADED BOOM ANGLE TO DETERMINE LOAD RATING OF JIB.
5. BOOM MUST BE FULLY RETRACTED WHEN JIB IS ERECTED, BEFORE LOWERING BOOM THRU THIS AREA.
6. FOR BOOM ANGLES NOT SHOWN ON JIB LOAD RATING CHART, USE RATING OF NEXT LOWER BOOM ANGLE.
7. FOR BOOM LENGTHS NOT SHOWN, USE RATING OF NEXT SHORTER OR LONGER BOOM LENGTH, WHICHEVER IS LESS. FOR RADII NOT SHOWN, USE RATING OF NEXT LONGER RADIUS.
8. CRANE LOAD RATINGS ON OUTRIGGERS ARE BASED ON FREELY SUSPENDED LOADS WITH THE MACHINE LEVELED AND STANDING ON A FIRM UNIFORM SUPPORTING SURFACE. NO ATTEMPT SHALL BE MADE TO MOVE A LOAD HORIZONTALLY ON THE GROUND IN ANY DIRECTION.
9. PRACTICAL WORKING LOADS DEPEND ON SUPPORTING SURFACE, WIND, AND OTHER FACTORS AFFECTING STABILITY SUCH AS HAZARDOUS SURROUNDINGS, EXPERIENCE OF PERSONNEL, AND PROPER HANDLING, ALL OF WHICH MUST BE TAKEN INTO ACCOUNT BY THE OPERATOR.
10. THE MAXIMUM LOAD WHICH MAY BE TELESCOPED IS LIMITED BY HYDRAULIC PRESSURE, BOOM ANGLE, AND BOOM LUBRICATION. IT IS SAFE TO ATTEMPT TO TELESCOPE ANY LOAD WITHIN THE LIMITS OF THE LOAD RATING CHART.

INFORMATION

1. DEDUCTIONS MUST BE MADE FROM RATED LOADS FOR STOWED JIB, OPTIONAL ATTACHMENTS, HOOKS, AND LOAD-BLOCKS (SEE DEDUCTION CHART). WEIGHTS OF SLINGS AND ALL OTHER LOAD HANDLING DEVICES SHALL BE CONSIDERED A PART OF THE LOAD.
2. CRANE LOAD RATINGS WITH OUTRIGGERS ARE BASED ON OUTRIGGERS AND STABILIZERS EXTENDED AND SET WITH MACHINE LEVELED.
3. LOAD RATINGS ABOVE THE HEAVY LINE ARE STRUCTURALLY LIMITED CAPACITIES. LOAD RATINGS BELOW THE HEAVY LINE ARE STABILITY LIMITED CAPACITIES AND DO NOT EXCEED 85% OF TIPPING.

DEFINITIONS

1. OPERATING RADIUS IS THE HORIZONTAL DISTANCE FROM THE AXIS OF ROTATION TO THE CENTER OF THE VERTICAL HOIST LINE OR TACKLE WITH LOAD APPLIED.
2. LOADED BOOM ANGLE AS SHOWN IN THE COLUMN HEADED BY α , IS THE INCLUDED ANGLE BETWEEN THE HORIZONTAL AND LONGITUDINAL AXES OF THE BOOM BASE AFTER LIFTING RATED LOAD AT RATED RADIUS.

LMI OPERATING CODES

SETTING	CRANE CONFIGURATION	SETTING	CRANE WITH PERSONNEL LIFTING PLATFORM
#1	MAIN BOOM	#5	PERSONNEL LIFTING PLATFORM ON MAIN BOOM
#2	FIXED JIB	#6	PERSONNEL LIFTING PLATFORM ON FIXED JIB
#3	TELESCOPIC JIB-RETRACTED	#7	PERSONNEL LIFTING PLATFORM ON TELESCOPIC JIB-RETRACTED
#4	TELESCOPIC JIB-EXTENDED	#8	PERSONNEL LIFTING PLATFORM ON TELESCOPIC JIB-EXTENDED

ALLOWABLE LINE PULL

1 PART LINE	2 PART LINE	3 PART LINE	4 PART LINE	5 PART LINE	6 PART LINE
8500 LBS	17000 LBS	25500 LBS	34000 LBS	42500 LBS	50000 LBS
7400 LBS	14800 LBS	22200 LBS	29600 LBS	37000 LBS	44400 LBS

WARNING

ANTI-TWO-BLOCK SYSTEM MUST BE IN GOOD OPERATING CONDITION BEFORE OPERATING CRANE. REFER TO OWNER'S MANUAL.

KEEP AT LEAST 3 WRAPS OF LOAD LINE ON DRUM AT ALL TIMES.

9/16" - 6X25 INRC (3.5:1 S.F.)
29750 LBS. MIN BREAKING STRENGTH
9/16" ROT RESISTANT (5.0:1 S.F.)
37000 LBS. MIN BREAKING STRENGTH

DEDUCTIONS FROM RATED LOADS FOR MANITEX SUPPLIED LOAD HANDLING DEVICES

AUXILIARY BLOCK	50 LBS
OVERHAUL BALL	180 LBS
SINGLE SHEAVE LOAD BLOCK	260 LBS
TRIPLE SHEAVE LOAD BLOCK	380 LBS
HOSE REEL	140 LBS
SWING AROUND JIB (STOWED)	SEE LOAD CHART

WARNING
LIFTING OFF THE MAIN BOOM POINT WHILE THE SWING AROUND JIB IS ERECTED IS NOT INTENDED OR APPROVED.

MODEL M2592S
MANITEX INC.
CRANE MEETS ANSI B30.5 REQUIREMENTS
DWG NO. 7300035-007 (A)

AREA OF OPERATION

STANDARD 360° FULL CAPACITY WORK AREA

WARNING:
THE FRONT TIRES MUST BE IN CONTACT WITH THE GROUND, AND THE MACHINE LEVELED, WHEN OPERATING IN THIS AREA.