



Optimum design and performance



# Aluminium Trailer Cranes



# Optimum design and

- ✓ powerful drive unit
- ✓ trend-setting manoeuvring drive
- ✓ uncompromising durability
- ✓ future-proof and environmentally friendly
- ✓ stable support system
- ✓ fully variable supports
- ✓ PLC control for maximum safety
- ✓ precise radio-remote control
- ✓ user-friendly even in the limit range
- ✓ extremely solid aluminium boom
- ✓ maximum working ranges
- ✓ precise telescoping under load
- ✓ sophisticated access platform technology
- ✓ broad range of accessories



# performance

## Powerful drive unit

- Petrol or diesel engines as well as bivalent drive concept (petrol/LPG) guarantee maximum working speeds
- Sufficient power reserves in any situation
- Lifting of the maximum load is always possible
- Operation of several crane functions at the same time



## Trend-setting manoeuvring drive

- Ideal weight distribution thanks to a tandem axle
- Powerful hydraulic engines provide surpassing drive capacities
- Precise steering by control levers or radio-remote control
- No overloading of axles and support wheel even with extremely challenging site conditions and demanding manoeuvres
- Long-term experience (approximately 1,000 units assembled)



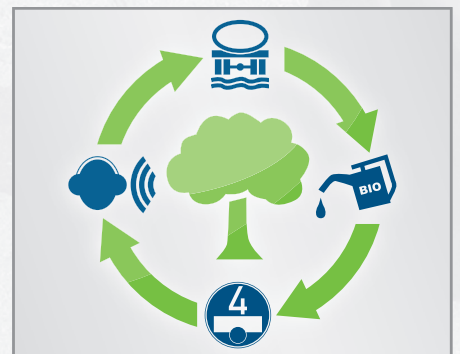
## Uncompromising durability

- Reliable drive units made by well-known manufacturers
- Variably adjustable hydraulic pumps guarantee ideal pressure and considerably low wear of the entire hydraulic system
- Certified endurance tests for telescoping and support cylinders, slide bars and steel cables
- Chassis successfully passed 100,000 km endurance test
- Surpassing reliability of the entire Böcker crane concept



## Future-proof and environmentally friendly

- Modern bivalent drive concept for petrol as well as LPG operation ensures longer operation time
- Future-proof thanks to noticeably lower emissions
- LPG tax concessions guarantee reduced fuel costs
- Biodegradable hydraulic oil - extreme durability and lowest water hazard class



## Stable support system

- Swivelling support legs made of fine-grained steel
- Solid hydraulic cylinder for continuously variable height levelling
- Stable and low-maintenance swivelling mechanism
- Support plates are safely stowed on the crane chassis and easily accessible at any time



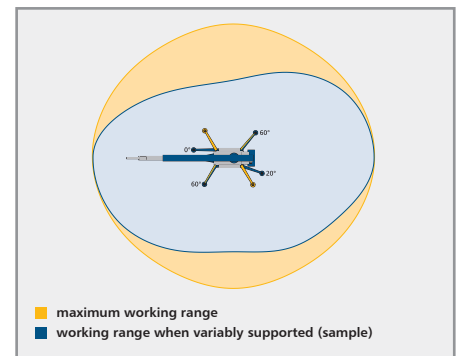
## Fully variable supports

- Fully independent adjustment of each crane support in three positions
- Limited required space for operations on challenging construction sites e.g. at a roadside with moving traffic
- Operations under extremely narrow site conditions such as house walls equally possible without any problem
- Maximum stability due to consistent overall-safety concept



## PLC control for maximum safety

- Automatic approval of the maximum working range depending on the position of supports and attached load
- Automatic limitation of the erection angle and consistent load-winch monitoring system
- Redundant safety concept – two separate safety circuits continuously monitor each other thus guaranteeing maximum working safety
- Entire safety concept certified by German technical inspection authority (TÜV Süd)



## Precise radio-remote control

- Radio-remote control with integrated graphic display made from one of the worldwide leading manufacturers (HBC radiomatic)
- Clear and well-arranged identification of all relevant operational data by easily understandable pictograms on the display
- Sophisticated control offers operation suggestions, e.g. when reaching the limit stop
- Identification of service intervals on the display in due time



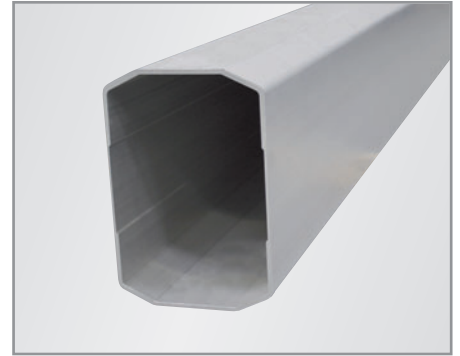
## User-friendly even in the limit range

- "Getting stuck" is impossible in any position
- Smooth starting in any working situation
- Precise control of the crane under any operational circumstances
- Accurate unloading on any spot on the roof
- Retractable jib with rated capacity limiting system monitored by sensors, therefore no annoying plugging of helix cables required



## Extremely durable aluminium boom

- Particularly low bending and torsion due to closed boom profile made of high-strength aluminium alloy
- Maximum durability thanks to integral profiles on all highly stressed sections of the boom
- No holes in the tension nor in the compression flange of the boom as these sections are exposed to maximum forces
- Abandonment of weld seams at inaccessible spots reduces maintenance costs
- Ten-year manufacturer's warranty on the entire boom



## Maximum working ranges

- Maximum working ranges up to the rear side of the roof
- Extremely powerful even while carrying medium or heavy duties
- Powerful brake of slew ring prevents the entire bodywork from turning even with high wind load and maximum working ranges



## Precise telescoping under load

- Precise telescoping even under heavy loads due to sophisticated control and boom technology
- Telescoping by using flyer chains and hydraulic cylinders allows for smooth steering even in extremely flat boom positions
- No problems with slack cable unlike outdated cable-telescoping technology



## Sophisticated access platform technology

- Easy assembly and convenient access to the platform
- Extremely short changeover times without separate tools thanks to Easy-Lock System
- Connection to crane electric, therefore no separate drive unit, no additional emissions and more space
- Fast relocation as the access platform remains on the crane for on-site manoeuvring
- Access platform rotatable



## Broad range of accessories

- Maximum versatility – accessories specifically tailored to each operation
- Lightweight aluminium design for maximum payloads
- Roof-tile clamps and platforms in various sizes and designs
- Tipper baskets and pallet forks made of aluminium
- Solar panel platform for transport of up to 14 solar-cell modules

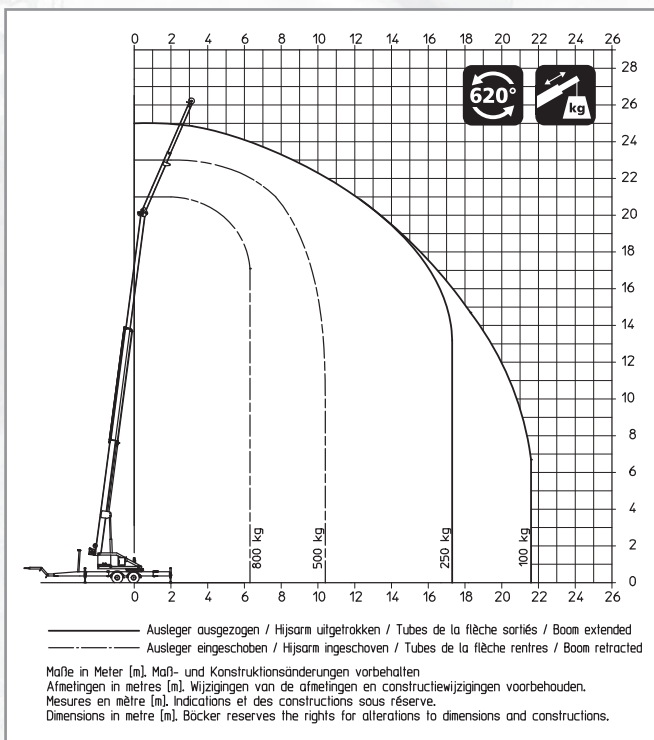




# Aluminium Trailer Crane AHK 25/800 PLC



## Duty chart



## Technical specifications

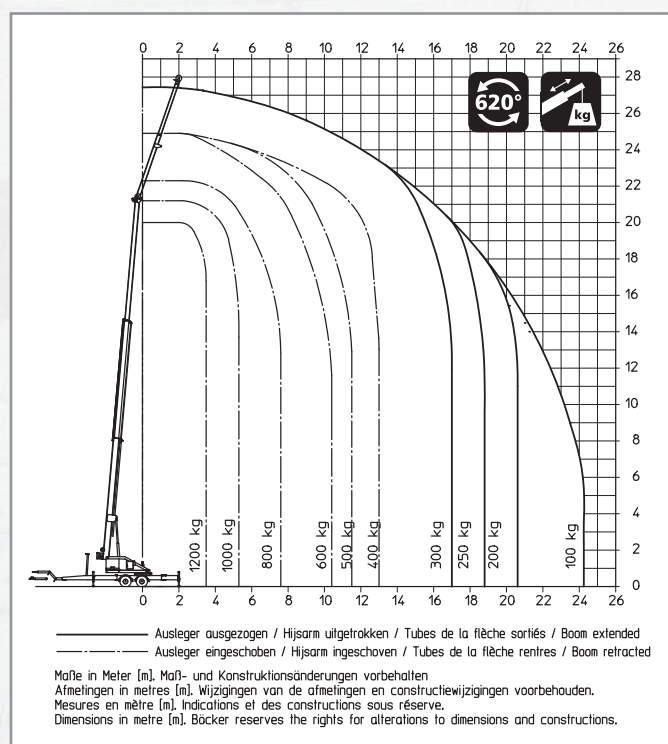
Payload max. [kg]	800
Extension length max. [m]	25.00
Main boom length max. [m]	20.00
Jib extendible [m]	3.85 to 6.00
Main boom angle approx. [degrees]	85
Jib angle approx. [degrees]	mech. 135 / 150 / 165
Lifting speed approx. [m/min]	45
Support to both sides L x W [m]	5.20 x 5.20
Support to one side L x W [m]	6.80 x 3.65
Vehicle dimensions L x W x H [m]	8.50 x 2.20 x 2.55
Gross vehicle weight [kg]	2,700

All rights reserved for changes in dimension and construction.

# Aluminium Trailer Crane AHK 27/1200 PLC



## Duty chart



## Technical specifications

Payload max. [kg]	1,200
Extension length max. [m]	27.00
Main boom length max. [m]	22.00
Jib extendible [m]	4.30 to 7.00
Main boom angle approx. [degrees]	85
Jib angle approx. [degrees]	mech. 135 / 150 / 165
Lifting speed approx. [m/min]	40
Support to both sides L x W [m]	5.40 x 5.40
Support to one side L x W [m]	7.30 x 3.75
Vehicle dimensions L x W x H [m]	9.00 x 2.20 x 2.60
Gross vehicle weight [kg]	3,500

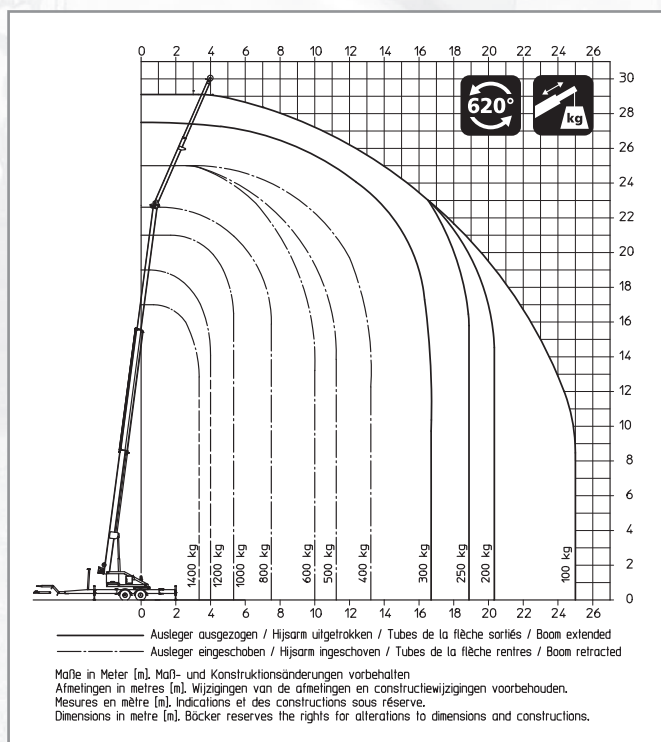
All rights reserved for changes in dimension and construction.



# Aluminium Trailer Crane AHK 30/1400 PLC



## Duty chart



## Technical specifications

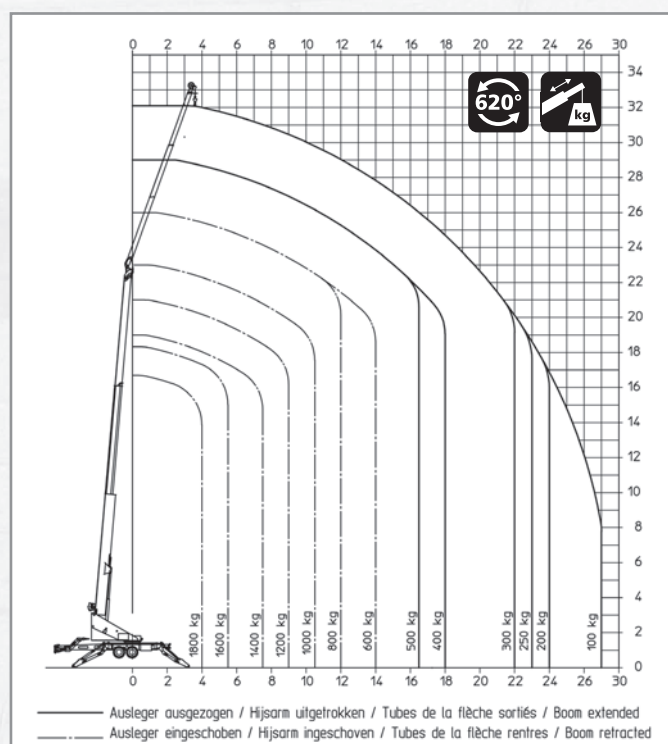
Payload max. [kg]	1,400
Extension length max. [m]	30.00
Main boom length max. [m]	22.00
Jib extendible [m]	4.80 to 9.10
Main boom angle approx. [degrees]	85
Jib angle approx. [degrees]	mech. 135 / 150 / 165
Lifting speed approx. [m/min]	55
Support to both sides L x W [m]	5.40 x 5.40
Support to one side L x W [m]	7.30 x 3.75
Vehicle dimensions L x W x H [m]	9.00 x 2.20 x 2.60
Gross vehicle weight [kg]	3,500

All rights reserved for changes in dimension and construction.

# Trailer Crane AHK 34/1800



## Duty chart



## Technical specifications

Payload max. [kg]	1,800
Extension length max. [m]	34.00
Main boom length max. [m]	22.00
Jib extendible [m]	5.00 to 11.20
Main boom angle approx. [degrees]	85
Jib angle [degrees]	hydraulic 0 to 165
Lifting speed approx. [m/min]	60
Support to both sides L x W [m]	5.40 x 5.40
Support to one side L x W [m]	7.20 x 3.60
Vehicle dimensions L x W x H [m]	9.20 (6,90) x 2.10 x 2.72
Gross vehicle weight [kg]	3,500

All rights reserved for changes in dimension and construction.

# MAXIMUM PERFORMANCE BY INNOVATION

## SOLIDFLEX Boom

- Sophisticated hybrid-boom technology
- Utilization of high-strength steel with extreme stability and special aluminium alloy
- Combination of both materials and optimized adjustment of chassis and boom ensure maximum flexibility and unique performance data concerning working range, loading capacity, minimum bending, ease of use and safety
- Smooth telescoping by hydraulic cylinders at any time even with attached load
- Interior energy chain



## Multiflex Stabilizing System

- Pivotal and foldable stabilizers
- Swivelling over obstacles without any problem
- Alignment of stabilizers in the direction of the load ensures maximum working ranges
- Minimum required space and precise adjustment to the conditions on site thanks to 256 possible stabilizer positions
- Levelling of ground unevenness up to 50 cm without substructure
- Convenient control of stabilizers by radio-remote control
- Stabilizer plates safely stored on the crane
- Automatic self-levelling (option)



## EHSC Control

- Fast PLC control in 32 bit technology with 150MHz
- Automatic approval of maximum working range depending on the stabilizer positions as well as the attached load
- Smooth acceleration of crane functions in any working situation ensures minimum swinging of loads
- Slack-rope device and winch monitoring system
- Redundant safety equipment with four CAN Busses, two separate safety circuits constantly monitor each other and therefore guarantee maximum work safety
- Overall safety concept certified by German inspection authority DEKRA
- Radio-remote control with full-graphic display and intuitional control by jog-shuttle
- Fully automatic boom retraction to transport position (option)



## Swivelling Drawbar

- Simple swivelling of drawbar ensures reduction of required length on site from 9.20 m to only 6.90 m
- Extremely compact dimensions also for on-site manoeuvring
- Required space on site is reduced clearly
- Stable jockey wheel





**Böcker Belgium NV**

Boomsesteenweg 101 · D-2630 Aartselaar  
Fon +32 (0) 3/45 76 241  
Fax +32 (0) 3/45 76 242  
Mail [belgium@boecker-group.com](mailto:belgium@boecker-group.com)

**Böcker France SAS**

Zac du TEC · F-30320 Marguerittes  
Fon +33 (0)4 6620 9364  
Fax +33 (0)4 6620 9926  
Mail [france@boecker-group.com](mailto:france@boecker-group.com)

**Böcker Italia srl**

Corso Porta Nuova 11 · I-37122 Verona  
Fon +39 045 / 87 80 399  
Fax +39 045 / 87 80 420  
Mail [italia@boecker-group.com](mailto:italia@boecker-group.com)

**Böcker Nederland B.V.**

De Geerden 22 · NL-5334 LE Velddriel  
Fon +31 (0) 418/571 444  
Fax +31 (0) 418/635 222  
Mail [nederland@boecker-group.com](mailto:nederland@boecker-group.com)

**Böcker Schweiz AG**

Striegelstraße 1 · CH-4665 Oftringen  
Fon +41 (0) 62/797 62 62  
Fax +41 (0) 62/797 62 68  
Mail [schweiz@boecker-group.com](mailto:schweiz@boecker-group.com)



**Böcker Maschinenwerke GmbH**

Lippestraße 69-73 · D-59368 Werne  
Fon +49 (0) 23 89/79 89-0  
Fax +49 (0) 23 89/79 89-9000  
Mail [info@boecker-group.com](mailto:info@boecker-group.com)  
Web [www.boecker-group.com](http://www.boecker-group.com)