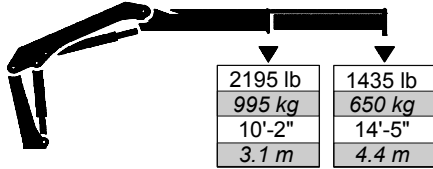


# 3.2/23

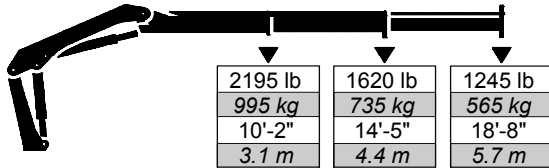
# Articulating Crane Technical Specifications

## 3.2/23 Lifting Capacities

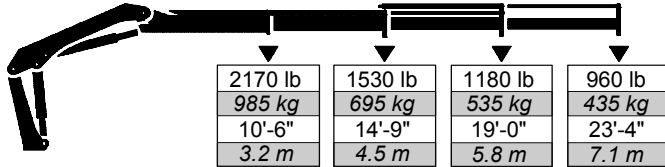
### 3.2/23 - 1 Hydraulic



### 3.2/23 - 2 Hydraulic



### 3.2/23 - 3 Hydraulic



Note: Crane appearance subject to change.

### Minimum Chassis Specifications

Front Axle Rating (GAWR)	5000 lb (2270 kg)
Rear Axle Rating (GAWR)	9000 lb (4080 kg)
Resistance To Bending Moment	350,000 in-lb (40,325 kg-m)

### 3.2/23 Specifications

Outrigger Pad Diameter	5.5" (140 mm)
Crane Storage Height	5' 2" (1591 mm)
Mounting Space	1' 8" (516 mm)
Rotational Torque	3980 ft-lb (550 kgm)
Rotation	370°
Optimum Pump Performance	4.0 gpm (15 L/min)
System Pressure	3190 psi (220 bar)
Oil Reservoir Capacity	5.3 gal (20 l)
Outrigger Extension Span	
Standard (man. out / man. down)	10' 10" (3300 mm)
Weight	160 lb (72 kg)
Wide (man. out / man. down)	12' 10" (3900 mm)
Weight	160 lb (72 kg)

3.2/23	1 - Hydraulic	2 - Hydraulic	3 - Hydraulic
Crane Rating*	23,145 ft-lb (3.2 tm)	23,145 ft-lb (3.2 tm)	23,145 ft-lb (3.2 tm)
Maximum Horizontal Reach	14' 5" (4.4 m)	19' 0" (5.8 m)	23' 7" (7.2 m)
Maximum Vertical Reach	20' 2" (6.2 m)	24' 7" (7.5 m)	29' 3" (8.9 m)
Maximum Capacity	2195 lb (995 kg)	2195 lb (995 kg)	2170 lb (985 kg)
Max Cap @ Max Reach	1435 lb (650 kg)	1245 lb (565 kg)	960 lb (435 kg)
Crane Weight **	920 lb (418 kg)	1030 lb (468 kg)	1120 lb (508 kg)
Hook Approach			
Vertical	8' 0" (2.45 m)	7' 7" (2.32 m)	7' 2" (2.18 m)
Horizontal	2' 11" (0.89 m)	3' 1" (0.94 m)	3' 3" (1.00 m)
Center of Gravity - Stored			
Vertical	1' 7" (470 mm)	1' 7" (485 mm)	1' 8" (500 mm)
Horizontal (C/L Rot to Bridge)	10.0" (255 mm)	9.8" (250 mm)	9.4" (240 mm)

\* Crane rating (ft-lb) is the rated load (lb) multiplied by the respective distance (ft) from centerline of rotation with all extensions retracted and the inner and outer booms in a horizontal position, per ANSI B30.22.

\*\* Crane weight does not include outriggers.

© 2009 Iowa Mold Tooling Co., Inc. All Rights Reserved.



An Oshkosh Corporation Company

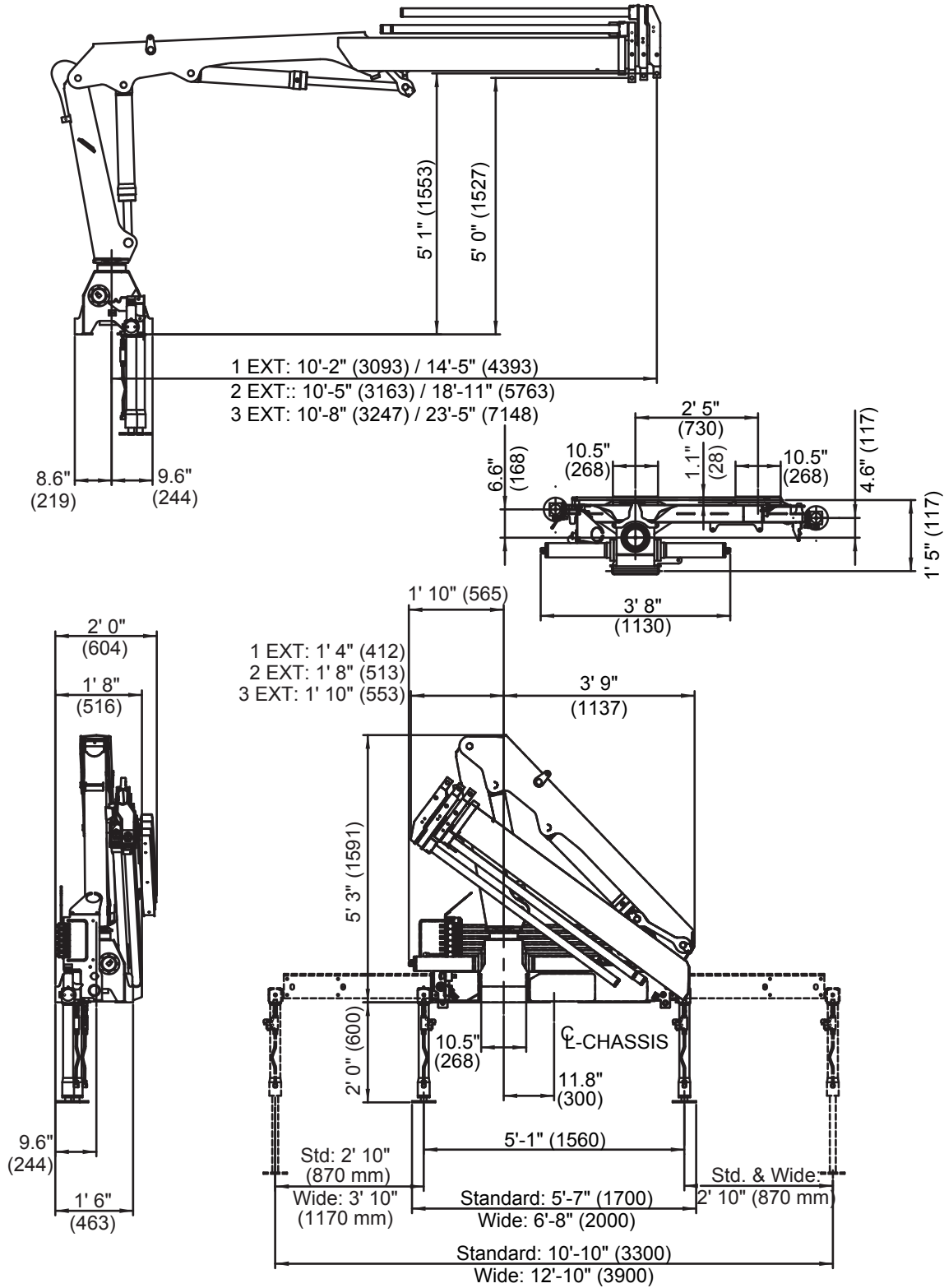


# 3.2/23 Articulating Crane



An Oshkosh Corporation Company

## Geometric Configurations



### Iowa Mold Tooling Co., Inc.

500 Highway 18 West P.O. Box 189 Garner, Iowa 50438-0189  
 800-247-5958 641-923-3711 Fax: 641-923-6063 www.imt.com

IMT reserves the right to make changes in engineering, design, and specifications; add improvements; or discontinue manufacturing at any time without notice or obligation.

IMT and the IMT LOGO are registered trademarks or trademarks of Iowa Mold Tooling Co., Inc., Garner, IA, USA.

© 2009 Iowa Mold Tooling Co., Inc. All Rights Reserved.